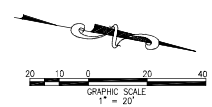


LEGEND

- EXISTING TREE TO BE PRESERVED
- PROPOSED PLAY EQUIPMENT W/ REQUIRED FALL ZONE
- EXISTING CHAIN LINK FENCE
- PROPOSED CHAIN LINK FENCE
- PROPOSED LIMITS OF CONSTRUCTION

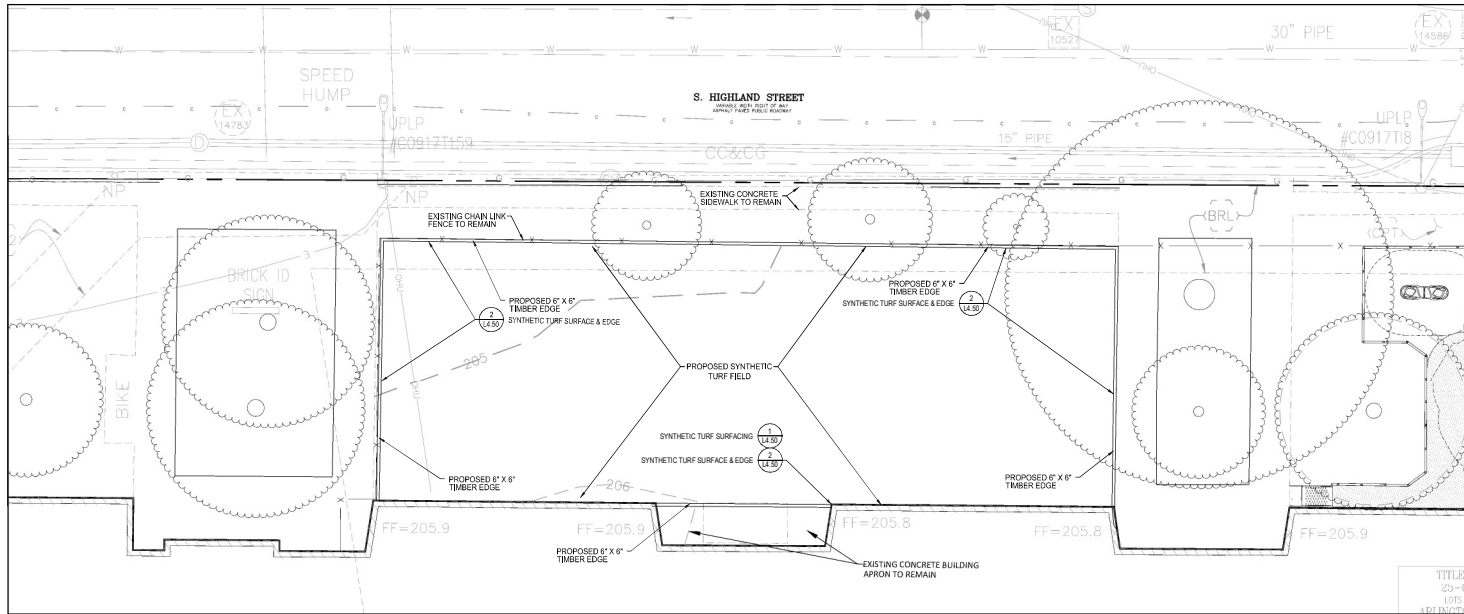


Bowman

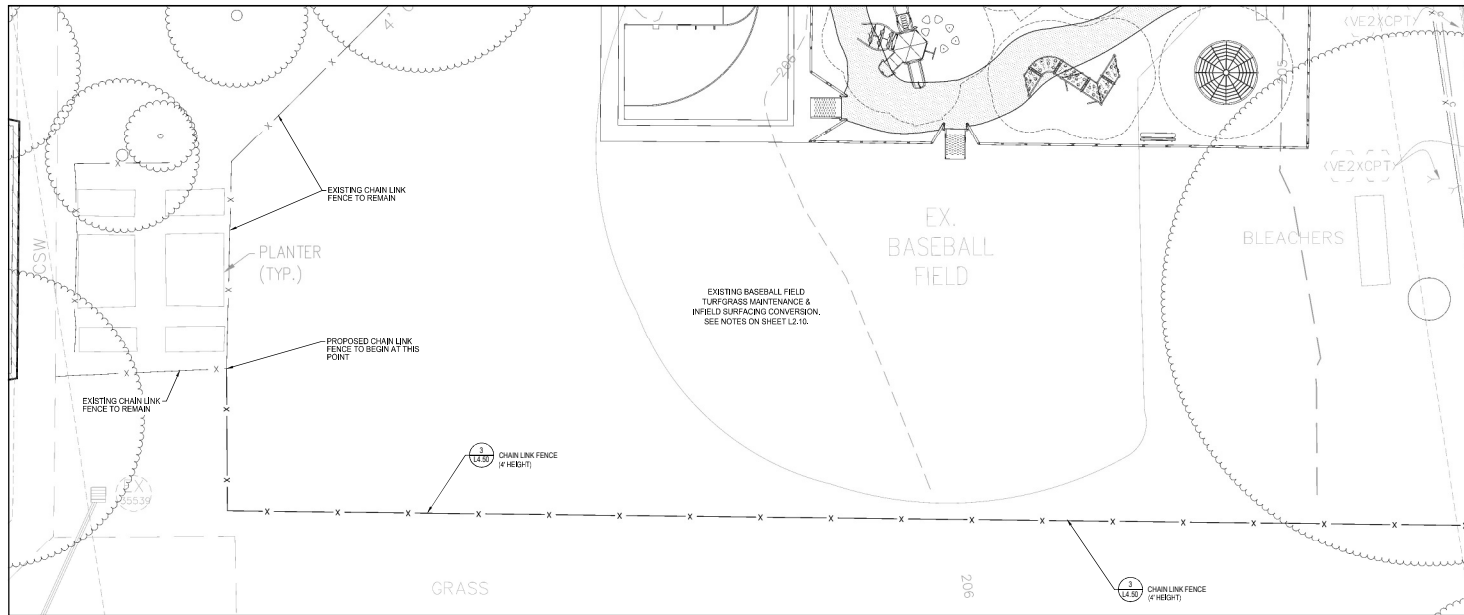
Bowman Consulting Group, LLC
13461 Sunrise Valley Drive, Suite 500
Harrison, Virginia 20117
© Bowman Group, Inc. 2014

Phone: (703) 484-1000
Fax: (703) 481-0720
www.bowmanconsulting.com

ARLINGTON COUNTY, VIRGINIA DEPARTMENT OF ENVIRONMENTAL SERVICES		
OVERALL HARDSCAPE PLAN		
ADMINISTRATIVE CHANGE		
MPSA PLAYGROUND RELOCATION/TURF CONVERSION		
701 SOUTH HIGHLAND STREET ARLINGTON, VIRGINIA 22204		
SCALE: 1"=20'	SHEET: L3.20	SUBMISSION DATE: 03/24/23



WEST SYNTHETIC TURF FIELD



TURF GRASS FIELD

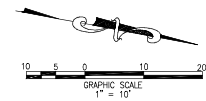
LEGEND



EXISTING TREE TO BE PRESERVED



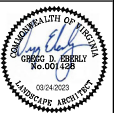
PROPOSED ADA COMPLIANT BONDDED RUBBER SURFACE



Bowman

Bowman Consulting Group, LLC
13461 Sunrise Valley Drive, Suite 500
Herndon, Virginia 20171
© 2016 Bowman Consulting, LLC

Phone: (703) 484-1000
Fax: (703) 484-0720
www.bowmanconsulting.com



ARLINGTON COUNTY, VIRGINIA
DEPARTMENT OF ENVIRONMENTAL SERVICES
DETAILED HARDSCAPE PLAN (1 OF 4)
ADMINISTRATIVE CHANGE
MPSA PLAYGROUND RELOCATION/TURF CONVERSION
701 SOUTH HIGHLAND STREET
ARLINGTON, VIRGINIA 22204

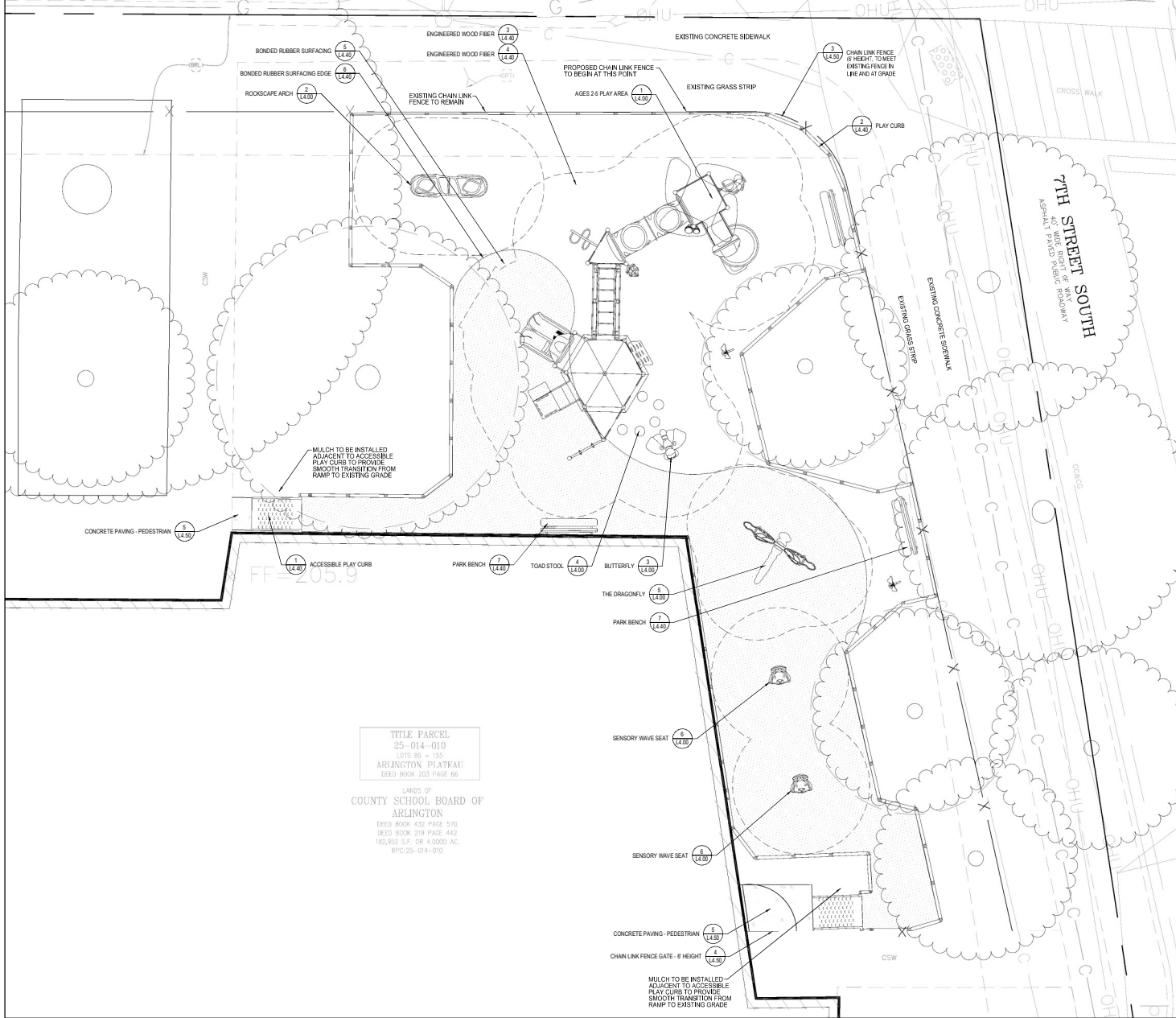
SCALE: 1" = 10'

SHEET: L3.10



SUBMISSION DATE: 03/24/23

S. HIGHLAND STREET

VARIABLE WIDTH RIGHT OF WAY
ASPHALT PAVED PUBLIC ROADWAY

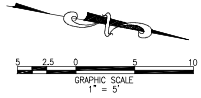


LEGEND

-  EXISTING TREE TO BE PRESERVED
-  PROPOSED ADA COMPLIANT BONDED RUBBER SURFACE

TITLE PARCEL
25-014-010
LOTS 89 - 155
ARLINGTON PLAYFAIR
RECD 8923, 203 PAGE 56

LANDS OF
COUNTY SCHOOL BOARD OF
ARLINGTON
DEED BOOK 432 PAGE 570
DEED BOOK 219 PAGE 442
182,992 S.F. OR 4.0000 AC.
RPTC 25-014-010



Bowman

Bowman Consulting Group, LLC
13461 Sunrise Valley Drive, Suite 500
Herndon, Virginia 20171
© Bowman Group, Inc. VA, LLC

Phone: (703) 484-1000
Fax: (703) 484-0720
www.bowmanconsulting.com



ARLINGTON COUNTY, VIRGINIA
DEPARTMENT OF ENVIRONMENTAL SERVICES

DETAILED LANDSCAPE PLAN (2 OF 4)

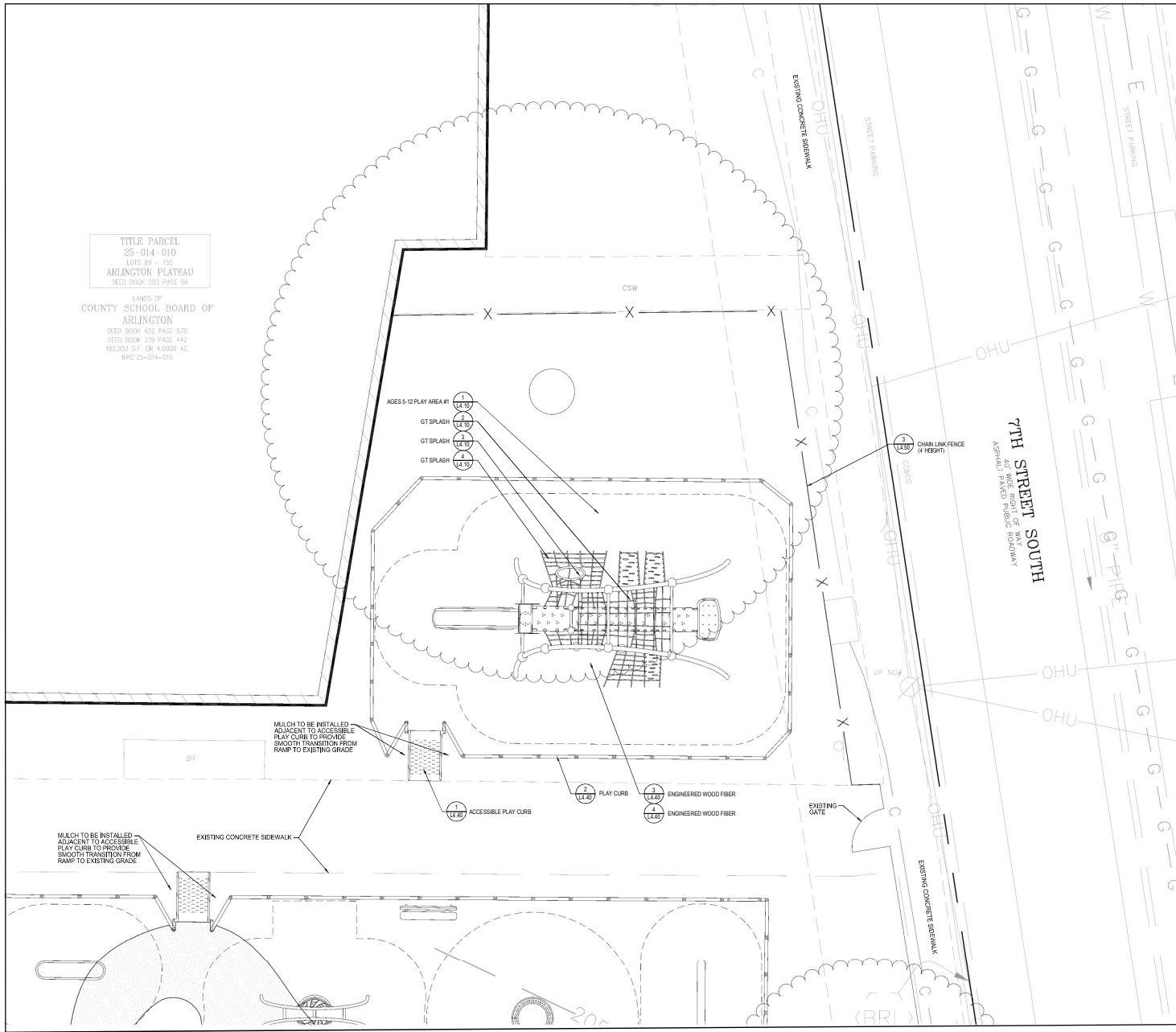
ADMINISTRATIVE CHANGE
MPSA PLAYGROUND RELOCATION/TURF CONVERSION

701 SOUTH HIGHLAND STREET
ARLINGTON, VIRGINIA 22204

SCALE: 1" = 5'	SHEET: L3.20	SUBMISSION DATE: 03/24/23
----------------	--------------	---------------------------

TITLE PARCEL
25-014-010
LOTS 89 - 155
ARLINGTON PLATEAU
DEED BOOK 203 PAGE 88

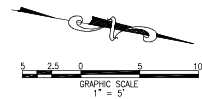
LANDS OF
COUNTY SCHOOL BOARD OF
ARLINGTON
DEED BOOK 432 PAGE 570
DEED BOOK 279 PAGE 142
182,952 S.F. OR 4.0000 AC.
RPC 25-014-010



LEGEND



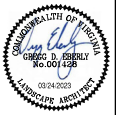
EXISTING TREE TO BE PRESERVED



Bowman

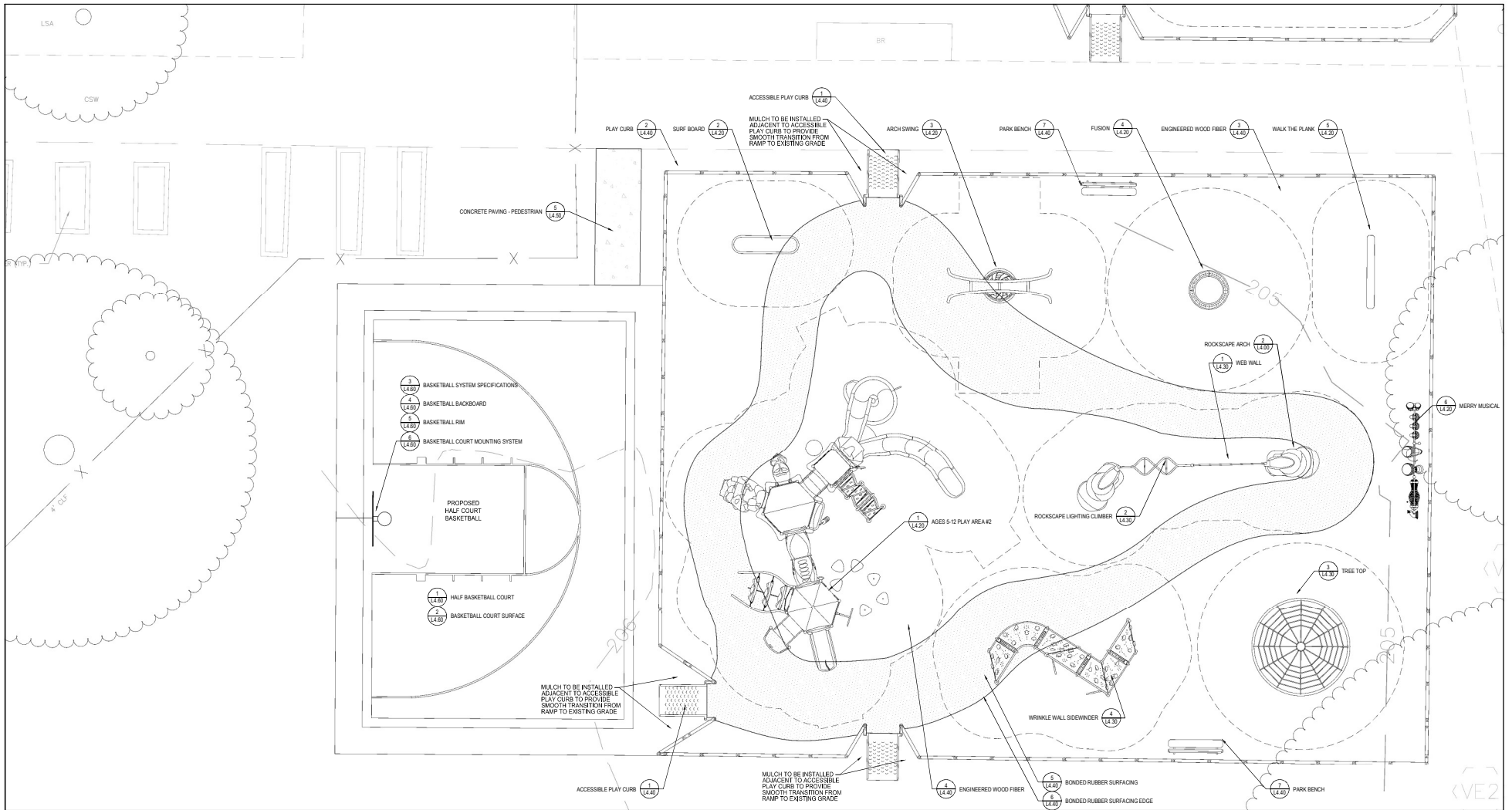
Bowman Consulting Group, LLC
13461 Sunrise Valley Drive, Suite 500
Herndon, Virginia 20171
© 2017 Bowman Consulting Group, LLC

Phone: (703) 484-1000
Fax: (703) 481-0720
www.bowmanconsulting.com



ARLINGTON COUNTY, VIRGINIA
DEPARTMENT OF ENVIRONMENTAL SERVICES
DETAILED HARDSCAPE PLAN (3 OF 4)
ADMINISTRATIVE CHANGE
MPSA PLAYGROUND RELOCATION/TURF CONVERSION
701 SOUTH HIGHLAND STREET
ARLINGTON, VIRGINIA 22204

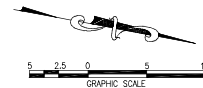
SCALE: 1" = 5' | SHEET: L3.30 | SUBMISSION DATE: 03/24/23



LEGEND



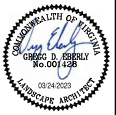
EXISTING TREE TO BE PRESERVED



Bowman

Bowman Consulting Group, LLC
13461 Sunrise Valley Drive, Suite 500
Harrison, Virginia 20117
© Bowman Consulting Group, LLC

Phone: (703) 484-1000
Fax: (703) 481-0720
www.bowmanconsulting.com



ARLINGTON COUNTY, VIRGINIA
DEPARTMENT OF ENVIRONMENTAL SERVICES
DETAILED HARDSCAPE PLAN (4 OF 4)
ADMINISTRATIVE CHANGE
MPSA PLAYGROUND RELOCATION/TURF CONVERSION
701 SOUTH HIGHLAND STREET
ARLINGTON, VIRGINIA 22204

SCALE: 1" = 5' SHEET: L3.40 SUBMISSION DATE: 03/24/23



MANUFACTURER:
GAMETIME
150 PLAYCORE DR. SE
FORT PAYNE, AL 35967

MODEL:
AGES 2-5 PLAY AREA

DIMENSIONS:
SEE PLAN

MOUNT:
IN-GROUND

COLOR:
TO BE DETERMINED
BY OWNER

GENERAL NOTES:

1. INSTALL PER MANUFACTURER'S SPECIFICATIONS
2. MANUFACTURER TO PROVIDE EQUIPMENT SHOP DRAWINGS TO OWNER FOR REVIEW AND APPROVAL PRIOR TO ORDERING MATERIALS
3. MANUFACTURER TO PROVIDE EQUIPMENT COLOR OPTIONS TO OWNER FOR REVIEW AND APPROVAL PRIOR TO ORDERING MATERIALS
4. AN EQUAL MAY BE SUBSTITUTED WITH APPROVAL BY OWNER/ ARCHITECT/ ENGINEER



MANUFACTURER:
GAMETIME
150 PLAYCORE DR. SE
FORT PAYNE, AL 35967

MODEL:
ROCKSCAPE ARCH - 7080

DIMENSIONS:
2' H, 24' W, 82" L

MOUNT:
IN-GROUND

COLOR:
TO BE DETERMINED
BY OWNER

GENERAL NOTES:

1. INSTALL PER MANUFACTURER'S SPECIFICATIONS
2. MANUFACTURER TO PROVIDE EQUIPMENT SHOP DRAWINGS TO OWNER FOR REVIEW AND APPROVAL PRIOR TO ORDERING MATERIALS
3. MANUFACTURER TO PROVIDE EQUIPMENT COLOR OPTIONS TO OWNER FOR REVIEW AND APPROVAL PRIOR TO ORDERING MATERIALS
4. AN EQUAL MAY BE SUBSTITUTED WITH APPROVAL BY OWNER/ ARCHITECT/ ENGINEER



MANUFACTURER:
GAMETIME
150 PLAYCORE DR. SE
FORT PAYNE, AL 35967

MODEL:
BUTTERFLY - 7028L

DIMENSIONS:
28" H, 4' W

MOUNT:
IN-GROUND

COLOR:
TO BE DETERMINED
BY OWNER

GENERAL NOTES:

1. INSTALL PER MANUFACTURER'S SPECIFICATIONS
2. MANUFACTURER TO PROVIDE EQUIPMENT SHOP DRAWINGS TO OWNER FOR REVIEW AND APPROVAL PRIOR TO ORDERING MATERIALS
3. MANUFACTURER TO PROVIDE EQUIPMENT COLOR OPTIONS TO OWNER FOR REVIEW AND APPROVAL PRIOR TO ORDERING MATERIALS
4. AN EQUAL MAY BE SUBSTITUTED WITH APPROVAL BY OWNER/ ARCHITECT/ ENGINEER

1 AGES 2-5 PLAY AREA
PERSPECTIVE

(OR APPROVED EQUAL)
NTS

2 ROCKSCAPE ARCH
IMAGE

(OR APPROVED EQUAL)
NTS

3 BUTTERFLY
IMAGE

(OR APPROVED EQUAL)
NTS



MANUFACTURER:
GAMETIME
150 PLAYCORE DR. SE
FORT PAYNE, AL 35967

MODEL:
TOAD STOOL - 10768

DIMENSIONS:
1' DIA

MOUNT:
IN-GROUND

COLOR:
TO BE DETERMINED
BY OWNER

GENERAL NOTES:

1. INSTALL PER MANUFACTURER'S SPECIFICATIONS
2. MANUFACTURER TO PROVIDE EQUIPMENT SHOP DRAWINGS TO OWNER FOR REVIEW AND APPROVAL PRIOR TO ORDERING MATERIALS
3. MANUFACTURER TO PROVIDE EQUIPMENT COLOR OPTIONS TO OWNER FOR REVIEW AND APPROVAL PRIOR TO ORDERING MATERIALS
4. AN EQUAL MAY BE SUBSTITUTED WITH APPROVAL BY OWNER/ ARCHITECT/ ENGINEER



MANUFACTURER:
GAMETIME
150 PLAYCORE DR. SE
FORT PAYNE, AL 35967

MODEL:
THE DRAGONFLY - 38000

DIMENSIONS:
9' W, 6' L

MOUNT:
IN-GROUND

COLOR:
TO BE DETERMINED
BY OWNER

GENERAL NOTES:

1. INSTALL PER MANUFACTURER'S SPECIFICATIONS
2. MANUFACTURER TO PROVIDE EQUIPMENT SHOP DRAWINGS TO OWNER FOR REVIEW AND APPROVAL PRIOR TO ORDERING MATERIALS
3. MANUFACTURER TO PROVIDE EQUIPMENT COLOR OPTIONS TO OWNER FOR REVIEW AND APPROVAL PRIOR TO ORDERING MATERIALS
4. AN EQUAL MAY BE SUBSTITUTED WITH APPROVAL BY OWNER/ ARCHITECT/ ENGINEER



MANUFACTURER:
GAMETIME
150 PLAYCORE DR. SE
FORT PAYNE, AL 35967

MODEL:
SENSORY WAVE SEAT - 3274

DIMENSIONS:
NOT AVAILABLE

MOUNT:
IN-GROUND

COLOR:
TO BE DETERMINED
BY OWNER

GENERAL NOTES:

1. INSTALL PER MANUFACTURER'S SPECIFICATIONS
2. MANUFACTURER TO PROVIDE EQUIPMENT SHOP DRAWINGS TO OWNER FOR REVIEW AND APPROVAL PRIOR TO ORDERING MATERIALS
3. MANUFACTURER TO PROVIDE EQUIPMENT COLOR OPTIONS TO OWNER FOR REVIEW AND APPROVAL PRIOR TO ORDERING MATERIALS
4. AN EQUAL MAY BE SUBSTITUTED WITH APPROVAL BY OWNER/ ARCHITECT/ ENGINEER

4 TOAD STOOL
IMAGE

(OR APPROVED EQUAL)
NTS

5 THE DRAGONFLY
IMAGE

(OR APPROVED EQUAL)
NTS

6 SENSORY WAVE SEAT
IMAGE

(OR APPROVED EQUAL)
NTS

<p>Bowman Consulting Group, LLC 13461 Sunrise Valley Drive, Suite 500 Herdon, Virginia 20171 © Bowman Consulting Group, LLC</p> <p>Phone: (703) 484-1000 Fax: (703) 481-0720 www.bowmanconsulting.com</p>		
<p>ARLINGTON COUNTY, VIRGINIA DEPARTMENT OF ENVIRONMENTAL SERVICES</p> <p>HARDSCAPE DETAILS (1 OF 7) ADMINISTRATIVE CHANGE MPSA PLAYGROUND RELOCATION/TURF CONVERSION 701 SOUTH HIGHLAND STREET ARLINGTON, VIRGINIA 22204</p>		
SCALE: AS NOTED	SHEET: L420	SUBMISSION DATE: 03/24/23



MANUFACTURER:
GAMETIME
150 PLAYCORE DR. SE
FORT PAYNE, AL 35967

MODEL:
AGES 5-12 PLAY AREA

DIMENSIONS:
47L, 32 W

MOUNT:
IN-GROUND

COLOR:
TO BE DETERMINED
BY OWNER



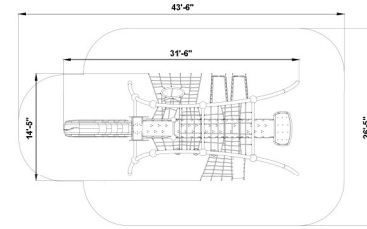
MANUFACTURER:
GAMETIME
150 PLAYCORE DR. SE
FORT PAYNE, AL 35967

MODEL:
GT SPLASH - 6257

DIMENSIONS:
47L, 32 W

MOUNT:
IN-GROUND

COLOR:
TO BE DETERMINED
BY OWNER



MANUFACTURER:
GAMETIME
150 PLAYCORE DR. SE
FORT PAYNE, AL 35967

MODEL:
GT SPLASH - 6257

DIMENSIONS:
AS NOTED

MOUNT:
IN-GROUND

COLOR:
TO BE DETERMINED
BY OWNER

- GENERAL NOTES:**
1. INSTALL PER MANUFACTURER'S SPECIFICATIONS
 2. MANUFACTURER TO PROVIDE EQUIPMENT SHOP DRAWINGS TO OWNER FOR REVIEW AND APPROVAL PRIOR TO ORDERING MATERIALS
 3. MANUFACTURER TO PROVIDE EQUIPMENT COLOR OPTIONS TO OWNER FOR REVIEW AND APPROVAL PRIOR TO ORDERING MATERIALS
 4. AN EQUAL MAY BE SUBSTITUTED WITH APPROVAL BY OWNER/ ARCHITECT/ ENGINEER

- GENERAL NOTES:**
1. INSTALL PER MANUFACTURER'S SPECIFICATIONS
 2. MANUFACTURER TO PROVIDE EQUIPMENT SHOP DRAWINGS TO OWNER FOR REVIEW AND APPROVAL PRIOR TO ORDERING MATERIALS
 3. MANUFACTURER TO PROVIDE EQUIPMENT COLOR OPTIONS TO OWNER FOR REVIEW AND APPROVAL PRIOR TO ORDERING MATERIALS
 4. AN EQUAL MAY BE SUBSTITUTED WITH APPROVAL BY OWNER/ ARCHITECT/ ENGINEER

- GENERAL NOTES:**
1. INSTALL PER MANUFACTURER'S SPECIFICATIONS
 2. MANUFACTURER TO PROVIDE EQUIPMENT SHOP DRAWINGS TO OWNER FOR REVIEW AND APPROVAL PRIOR TO ORDERING MATERIALS
 3. MANUFACTURER TO PROVIDE EQUIPMENT COLOR OPTIONS TO OWNER FOR REVIEW AND APPROVAL PRIOR TO ORDERING MATERIALS
 4. AN EQUAL MAY BE SUBSTITUTED WITH APPROVAL BY OWNER/ ARCHITECT/ ENGINEER

1 AGES 5-12 PLAY AREA #1
PERSPECTIVE

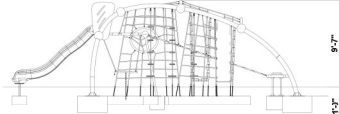
(OR APPROVED EQUAL)
NTS

2 GT SPLASH
IMAGE

(OR APPROVED EQUAL)
NTS

3 GT SPLASH
PLAN

(OR APPROVED EQUAL)
NTS



MANUFACTURER:
GAMETIME
150 PLAYCORE DR. SE
FORT PAYNE, AL 35967

MODEL:
GT SPLASH - 6257

DIMENSIONS:
AS NOTED

MOUNT:
IN-GROUND

COLOR:
TO BE DETERMINED
BY OWNER

- GENERAL NOTES:**
1. INSTALL PER MANUFACTURER'S SPECIFICATIONS
 2. MANUFACTURER TO PROVIDE EQUIPMENT SHOP DRAWINGS TO OWNER FOR REVIEW AND APPROVAL PRIOR TO ORDERING MATERIALS
 3. MANUFACTURER TO PROVIDE EQUIPMENT COLOR OPTIONS TO OWNER FOR REVIEW AND APPROVAL PRIOR TO ORDERING MATERIALS
 4. AN EQUAL MAY BE SUBSTITUTED WITH APPROVAL BY OWNER/ ARCHITECT/ ENGINEER

4 GT SPLASH
SECTION

(OR APPROVED EQUAL)
NTS

Bowman

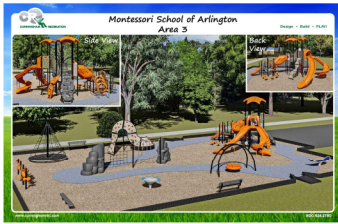
Bowman Consulting Group, LLC
13461 Sunrise Valley Drive, Suite 500
Herdon, Virginia 20171
© Bowman Consulting Group, LLC

Phone: (703) 484-1000
Fax: (703) 481-0720
www.bowmanconsulting.com



ARLINGTON COUNTY, VIRGINIA
DEPARTMENT OF ENVIRONMENTAL SERVICES
HARDSCAPE DETAILS (2 OF 7)
ADMINISTRATIVE CHANGE
MPSA PLAYGROUND RELOCATION/TURF CONVERSION
701 SOUTH HIGHLAND STREET
ARLINGTON, VIRGINIA 22204

SCALE: AS NOTED | SHEET: L4.10 | SUBMISSION DATE: 03/24/23



MANUFACTURER:
GAMETIME
150 PLAYCORE DR. SE
FORT PAYNE, AL 35967

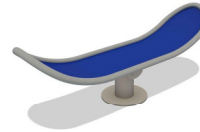
MODEL:
AGES 5-12 PLAY AREA

DIMENSIONS:
AS NOTED

MOUNT:
IN-GROUND

COLOR:
TO BE DETERMINED
BY OWNER

- GENERAL NOTES:**
1. INSTALL PER MANUFACTURER'S SPECIFICATIONS
 2. MANUFACTURER TO PROVIDE EQUIPMENT SHOP DRAWINGS TO OWNER FOR REVIEW AND APPROVAL PRIOR TO ORDERING MATERIALS
 3. MANUFACTURER TO PROVIDE EQUIPMENT COLOR OPTIONS TO OWNER FOR REVIEW AND APPROVAL PRIOR TO ORDERING MATERIALS
 4. AN EQUAL MAY BE SUBSTITUTED WITH APPROVAL BY OWNER/ ARCHITECT/ ENGINEER



MANUFACTURER:
GAMETIME
150 PLAYCORE DR. SE
FORT PAYNE, AL 35967

MODEL:
SURF BOARD - 8475

DIMENSIONS:
19' L, 14' W

MOUNT:
IN-GROUND

COLOR:
TO BE DETERMINED
BY OWNER

- GENERAL NOTES:**
1. INSTALL PER MANUFACTURER'S SPECIFICATIONS
 2. MANUFACTURER TO PROVIDE EQUIPMENT SHOP DRAWINGS TO OWNER FOR REVIEW AND APPROVAL PRIOR TO ORDERING MATERIALS
 3. MANUFACTURER TO PROVIDE EQUIPMENT COLOR OPTIONS TO OWNER FOR REVIEW AND APPROVAL PRIOR TO ORDERING MATERIALS
 4. AN EQUAL MAY BE SUBSTITUTED WITH APPROVAL BY OWNER/ ARCHITECT/ ENGINEER



MANUFACTURER:
GAMETIME
150 PLAYCORE DR. SE
FORT PAYNE, AL 35967

MODEL:
ARCH SWING - 5058

DIMENSIONS:
23' L, 22'10" W

MOUNT:
IN-GROUND

COLOR:
TO BE DETERMINED
BY OWNER

- GENERAL NOTES:**
1. INSTALL PER MANUFACTURER'S SPECIFICATIONS
 2. MANUFACTURER TO PROVIDE EQUIPMENT SHOP DRAWINGS TO OWNER FOR REVIEW AND APPROVAL PRIOR TO ORDERING MATERIALS
 3. MANUFACTURER TO PROVIDE EQUIPMENT COLOR OPTIONS TO OWNER FOR REVIEW AND APPROVAL PRIOR TO ORDERING MATERIALS
 4. AN EQUAL MAY BE SUBSTITUTED WITH APPROVAL BY OWNER/ ARCHITECT/ ENGINEER

1 AGES 5-12 PLAY AREA #2
PERSPECTIVE

(OR APPROVED EQUAL)
NTS

2 SURF BOARD
IMAGE

(OR APPROVED EQUAL)
NTS

3 ARCH SWING
IMAGE

(OR APPROVED EQUAL)
NTS



MANUFACTURER:
GAMETIME
150 PLAYCORE DR. SE
FORT PAYNE, AL 35967

MODEL:
FUSION - 8477

DIMENSIONS:
PER MANUFACTURER

MOUNT:
IN-GROUND

COLOR:
TO BE DETERMINED
BY OWNER

- GENERAL NOTES:**
1. INSTALL PER MANUFACTURER'S SPECIFICATIONS
 2. MANUFACTURER TO PROVIDE EQUIPMENT SHOP DRAWINGS TO OWNER FOR REVIEW AND APPROVAL PRIOR TO ORDERING MATERIALS
 3. MANUFACTURER TO PROVIDE EQUIPMENT COLOR OPTIONS TO OWNER FOR REVIEW AND APPROVAL PRIOR TO ORDERING MATERIALS
 4. AN EQUAL MAY BE SUBSTITUTED WITH APPROVAL BY OWNER/ ARCHITECT/ ENGINEER



MANUFACTURER:
GAMETIME
150 PLAYCORE DR. SE
FORT PAYNE, AL 35967

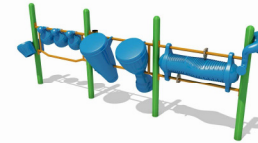
MODEL:
WALK THE PLANK - 8662

DIMENSIONS:
8' L, 10' W

MOUNT:
IN-GROUND

COLOR:
TO BE DETERMINED
BY OWNER

- GENERAL NOTES:**
1. INSTALL PER MANUFACTURER'S SPECIFICATIONS
 2. MANUFACTURER TO PROVIDE EQUIPMENT SHOP DRAWINGS TO OWNER FOR REVIEW AND APPROVAL PRIOR TO ORDERING MATERIALS
 3. MANUFACTURER TO PROVIDE EQUIPMENT COLOR OPTIONS TO OWNER FOR REVIEW AND APPROVAL PRIOR TO ORDERING MATERIALS
 4. AN EQUAL MAY BE SUBSTITUTED WITH APPROVAL BY OWNER/ ARCHITECT/ ENGINEER



MANUFACTURER:
GAMETIME
150 PLAYCORE DR. SE
FORT PAYNE, AL 35967

MODEL:
MERRY MUSICAL - 6223

DIMENSIONS:
12'10" L, 2' 4" W

MOUNT:
IN-GROUND

COLOR:
TO BE DETERMINED
BY OWNER

- GENERAL NOTES:**
1. INSTALL PER MANUFACTURER'S SPECIFICATIONS
 2. MANUFACTURER TO PROVIDE EQUIPMENT SHOP DRAWINGS TO OWNER FOR REVIEW AND APPROVAL PRIOR TO ORDERING MATERIALS
 3. MANUFACTURER TO PROVIDE EQUIPMENT COLOR OPTIONS TO OWNER FOR REVIEW AND APPROVAL PRIOR TO ORDERING MATERIALS
 4. AN EQUAL MAY BE SUBSTITUTED WITH APPROVAL BY OWNER/ ARCHITECT/ ENGINEER

4 FUSION
IMAGE

(OR APPROVED EQUAL)
NTS

5 WALK THE PLANK
IMAGE

(OR APPROVED EQUAL)
NTS

6 MERRY MUSICAL
IMAGE

(OR APPROVED EQUAL)
NTS

<h1>Bowman</h1>		
Bowman Consulting Group, Ltd. 13461 Sunrise Valley Drive, Suite 500 Herdon, Virginia 20171 © Bowman Group Inc. VA, USA	Phone: (703) 484-1000 Fax: (703) 481-0720 www.bowmancorp.com	

ARLINGTON COUNTY, VIRGINIA
DEPARTMENT OF ENVIRONMENTAL SERVICES
HARDSCAPE DETAILS (3 OF 7)
ADMINISTRATIVE CHANGE
MPSA PLAYGROUND RELOCATION/TURF CONVERSION
701 SOUTH HIGHLAND STREET
ARLINGTON, VIRGINIA 22204

SCALE: AS NOTED | SHEET: L420 | SUBMISSION DATE: 03/24/23



MANUFACTURER:
GAMETIME
150 PLAYCORE DR. SE
FORT PAYNE, AL 35967

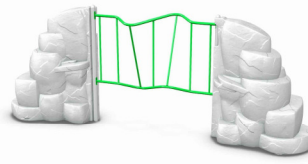
MODEL:
WEB WALL - 7091

DIMENSIONS:
PER MANUFACTURER

MOUNT:
IN-GROUND

COLOR:
TO BE DETERMINED
BY OWNER

- GENERAL NOTES:**
1. INSTALL PER MANUFACTURER'S SPECIFICATIONS
 2. MANUFACTURER TO PROVIDE EQUIPMENT SHOP DRAWINGS TO OWNER FOR REVIEW AND APPROVAL PRIOR TO ORDERING MATERIALS
 3. MANUFACTURER TO PROVIDE EQUIPMENT COLOR OPTIONS TO OWNER FOR REVIEW AND APPROVAL PRIOR TO ORDERING MATERIALS
 4. AN EQUAL MAY BE SUBSTITUTED WITH APPROVAL BY OWNER/ ARCHITECT/ ENGINEER



MANUFACTURER:
GAMETIME
150 PLAYCORE DR. SE
FORT PAYNE, AL 35967

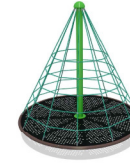
MODEL:
ROCKSCAPE LIGHTNING
CLIMBER - 7092

DIMENSIONS:
PER MANUFACTURER

MOUNT:
IN-GROUND

COLOR:
TO BE DETERMINED
BY OWNER

- GENERAL NOTES:**
1. INSTALL PER MANUFACTURER'S SPECIFICATIONS
 2. MANUFACTURER TO PROVIDE EQUIPMENT SHOP DRAWINGS TO OWNER FOR REVIEW AND APPROVAL PRIOR TO ORDERING MATERIALS
 3. MANUFACTURER TO PROVIDE EQUIPMENT COLOR OPTIONS TO OWNER FOR REVIEW AND APPROVAL PRIOR TO ORDERING MATERIALS
 4. AN EQUAL MAY BE SUBSTITUTED WITH APPROVAL BY OWNER/ ARCHITECT/ ENGINEER



MANUFACTURER:
GAMETIME
150 PLAYCORE DR. SE
FORT PAYNE, AL 35967

MODEL:
TREE TOP 2 - 5568SP

DIMENSIONS:
PER MANUFACTURER

MOUNT:
IN-GROUND

COLOR:
TO BE DETERMINED
BY OWNER

- GENERAL NOTES:**
1. INSTALL PER MANUFACTURER'S SPECIFICATIONS
 2. MANUFACTURER TO PROVIDE EQUIPMENT SHOP DRAWINGS TO OWNER FOR REVIEW AND APPROVAL PRIOR TO ORDERING MATERIALS
 3. MANUFACTURER TO PROVIDE EQUIPMENT COLOR OPTIONS TO OWNER FOR REVIEW AND APPROVAL PRIOR TO ORDERING MATERIALS
 4. AN EQUAL MAY BE SUBSTITUTED WITH APPROVAL BY OWNER/ ARCHITECT/ ENGINEER

1 WEB WALL
IMAGE

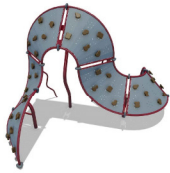
(OR APPROVED EQUAL)
NTS

2 ROCKSCAPE LIGHTING CLIMBER
IMAGE

(OR APPROVED EQUAL)
NTS

3 TREE TOP
IMAGE

(OR APPROVED EQUAL)
NTS



MANUFACTURER:
GAMETIME
150 PLAYCORE DR. SE
FORT PAYNE, AL 35967

MODEL:
WRINKLE WALL SIDEWINDER - 6252

DIMENSIONS:
4' W, 11'10" L

MOUNT:
IN-GROUND

COLOR:
TO BE DETERMINED
BY OWNER

- GENERAL NOTES:**
1. INSTALL PER MANUFACTURER'S SPECIFICATIONS
 2. MANUFACTURER TO PROVIDE EQUIPMENT SHOP DRAWINGS TO OWNER FOR REVIEW AND APPROVAL PRIOR TO ORDERING MATERIALS
 3. MANUFACTURER TO PROVIDE EQUIPMENT COLOR OPTIONS TO OWNER FOR REVIEW AND APPROVAL PRIOR TO ORDERING MATERIALS
 4. AN EQUAL MAY BE SUBSTITUTED WITH APPROVAL BY OWNER/ ARCHITECT/ ENGINEER

4 WRINKLE WALL SIDEWINDER
IMAGE

(OR APPROVED EQUAL)
NTS

Bowman

Bowman Consulting Group, LLC
13461 Sunrise Valley Drive, Suite 500
Herdon, Virginia 20171
© Bowman Consulting Group, LLC

Phone: (703) 484-1000
Fax: (703) 481-0720
www.bowmanconsulting.com



ARLINGTON COUNTY, VIRGINIA
DEPARTMENT OF ENVIRONMENTAL SERVICES
HARDSCAPE DETAILS (4 OF 7)
ADMINISTRATIVE CHANGE
MPSA PLAYGROUND RELOCATION/TURF CONVERSION
701 SOUTH HIGHLAND STREET
ARLINGTON, VIRGINIA 22204

SCALE: AS NOTED

SHEET: L4.30

SUBMISSION DATE: 03/24/23