

Social-Emotional Learning 2022-23

ACTL

October 12, 2022



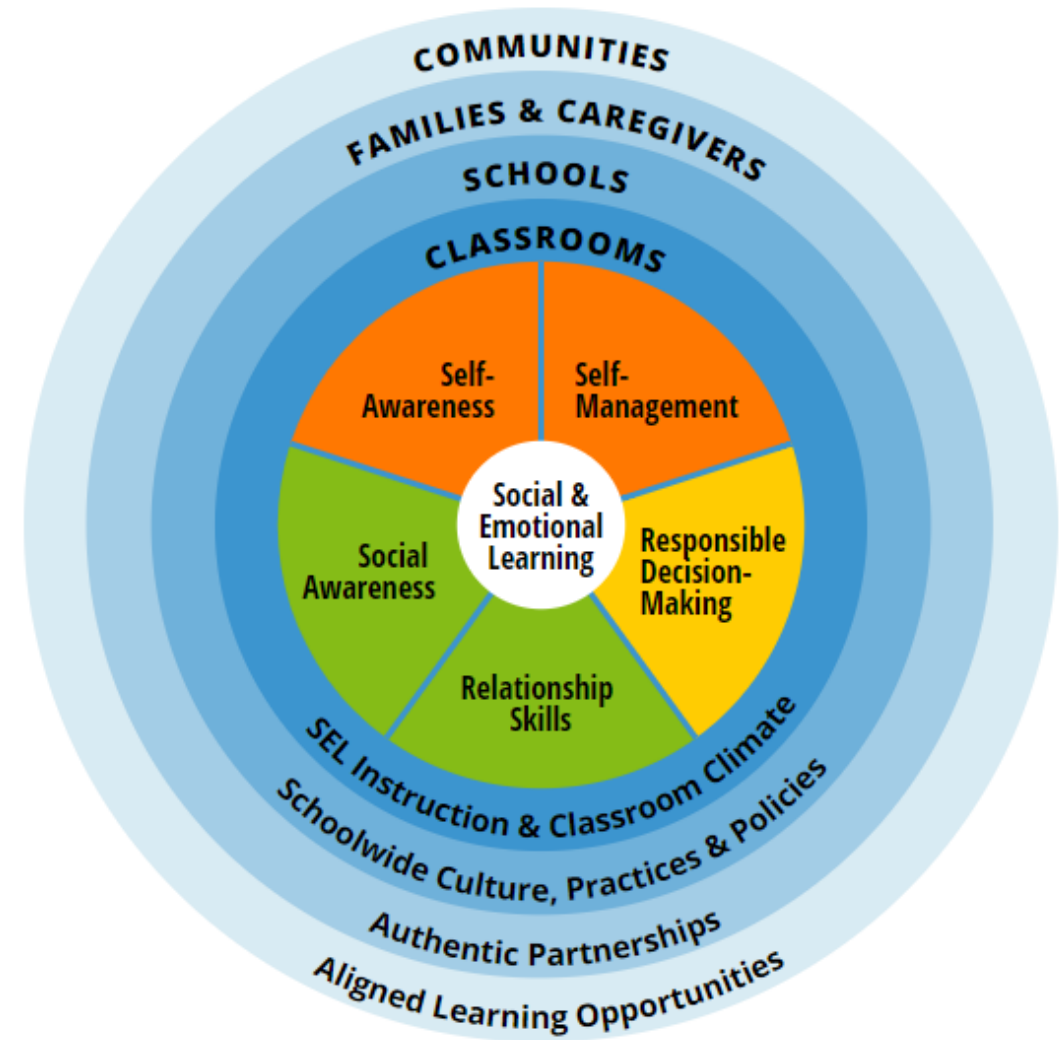
Arlington
Public
Schools



What is SEL?

Social-emotional learning (SEL) describes the *mindsets, skills, attitudes, and feelings* that help students succeed in school, career, and life. At its core, SEL focuses on students' fundamental needs for motivation, social connectedness, and self-regulation as prerequisites for learning. Source: [APS SEL Website](#)

SEL modeling, instruction, and reinforcement is the responsibility of everyone in Arlington Public Schools.





SEL and Three Signature Practices

1. Welcoming/Inclusive Activity

- *Turn to your neighbor and share a memory of your favorite Halloween costume*
 - Example of a brief, interactive experience that brings the voice of every participant into the room, making a connection to one another or the work ahead
 - The more we share ourselves and feel understood by others, the safer our learning environment becomes
 - Practicing welcoming routines is an investment in creating a calm, orderly space in which learners move with confidence and agency.

2. Engaging Strategies/Content

3. Optimistic Closure



What is SEL in APS?

SEL is...

- SEL is the responsibility of all APS staff.
- SEL seeks to empower students with the skills, knowledge, and understandings to make positive choices about their social-emotional engagement.
- SEL does model, teach, and reinforce prosocial skills that align to college, career, and life readiness frameworks.
- SEL does provide students with opportunities to learn how to engage with people who may be different than themselves in constructive and collaborative ways.
- SEL curriculum is aligned to the [Virginia Social-Emotional Guidance Standards](#) and the [Collaborative for Academic, Social, and Emotional Learning \(CASEL\) Framework](#).

SEL is not...

- SEL is not only the domain of school counselors, school psychologists, and school social workers.
- SEL is not used as a means to control students' behaviors.
- SEL is not a curriculum designed to persuade or indoctrinate students to specific political views.
- SEL is not critical race theory.
- SEL curriculum is not a single program or resource, nor does it lack structure.



Why SEL?

Your Voice Matters 2022


Student Well-Being: Social, Emotional Mental Health

QUESTION



How often do you feel so stressed or overwhelmed that you are not able to participate in regular activities?

4th & 5th Graders

36 % 
responded favorably

QUESTION



During the past 12 months, how often did you feel so sad or hopeless that you stopped doing some usual activities?

6th-12th Graders

30 % 
responded favorably

QUESTION



How often do you feel so stressed or overwhelmed that you are not able to participate in regular activities?

6th-12th Graders

26 % 
responded favorably



Why SEL?

Your Voice Matters 2022

Student Well-Being: School Climate

QUESTION

How often do you feel that you are treated poorly by other students because of your race, ethnicity, gender, family's income, religion, disability, or sexual orientation?

49% 
responded favorably

4th & 5th Graders

QUESTION

How connected do you feel to other students in your school?


64% 
responded favorably

▼ 1
from Spring 2020

6th-12th Graders

QUESTION

How often do you feel that you are treated poorly by other students because of your race, ethnicity, gender, family's income, religion, disability, or sexual orientation?

44% 
responded favorably

QUESTION

How connected do you feel to other students in your school?

46% 
responded favorably

▼ 5
from Spring 2020




Why SEL?

SEL Survey 2022

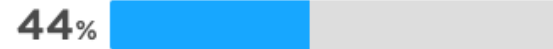
QUESTION Social Awareness

During the past 30 days...How clearly were you able to describe your feelings?

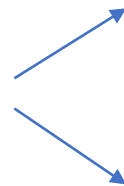
49% 
responded favorably

←
←
3rd-5th Graders

Emotion Regulation 




6th-12th Graders




QUESTION Social Awareness

During the past 30 days...How clearly were you able to describe your feelings?

35% 
responded favorably

QUESTION Sense of Belonging

How connected do you feel to the adults at your school?

29% 
responded favorably



What Jumps Out?



What is **one thing that jumped out to you** about the data that was just shared?

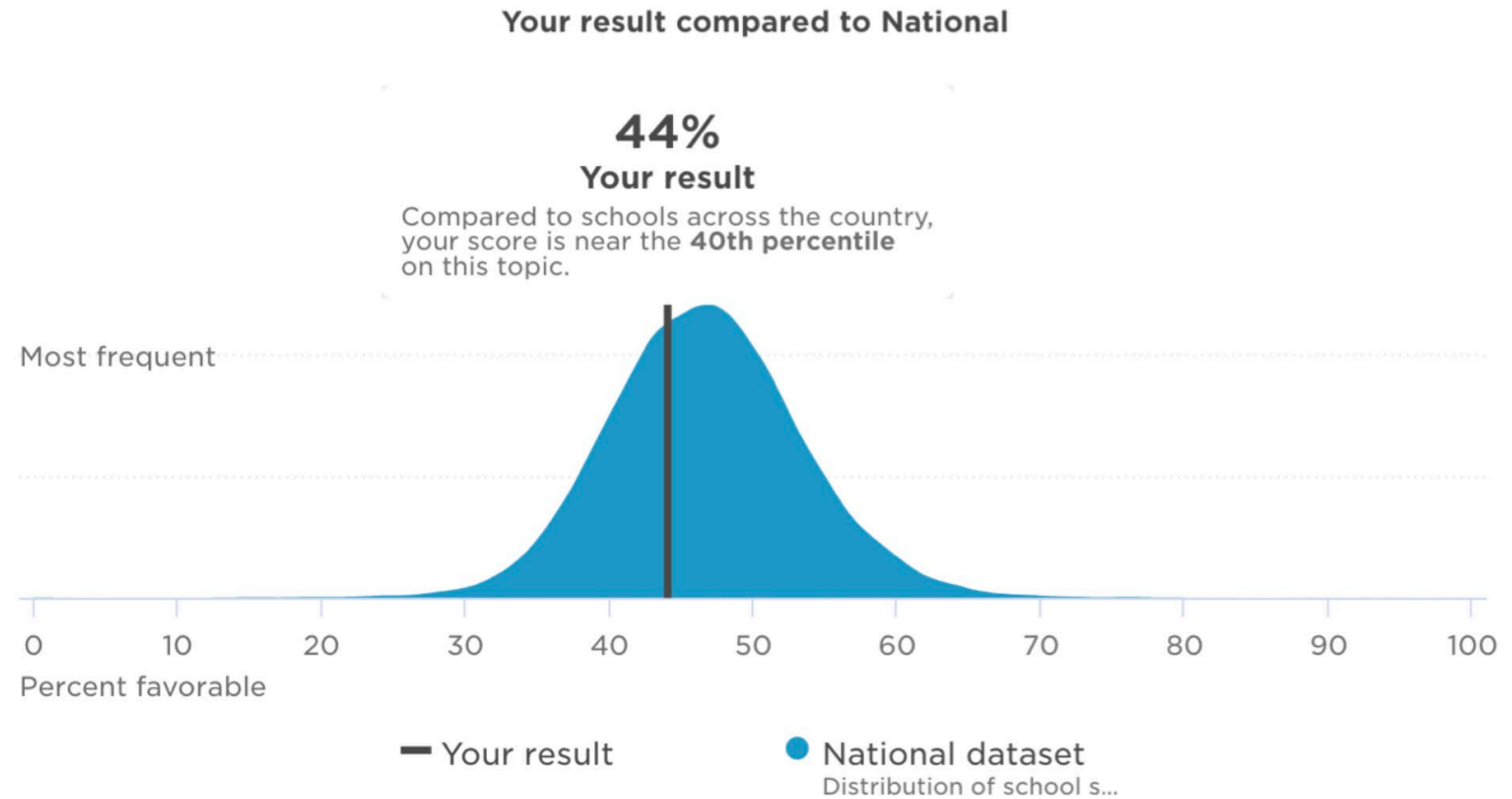


- Achievement Gaps
 - Do all the groups of students feel a sense of belonging and support?
- Chronic Absenteeism
 - Do all the students feel a purpose or connection in coming to school?
- College, Career, & Civic Readiness
 - Do all the students see a future for themselves and believe it is possible?



Areas of Focus: Elementary

Emotion Regulation: Grades 3-5





Areas of Focus: Secondary

Your result compared to National

47%

Your result

Compared to middle schools with a low FRPL % in an urban setting, your score is near the **10th percentile** on this topic.

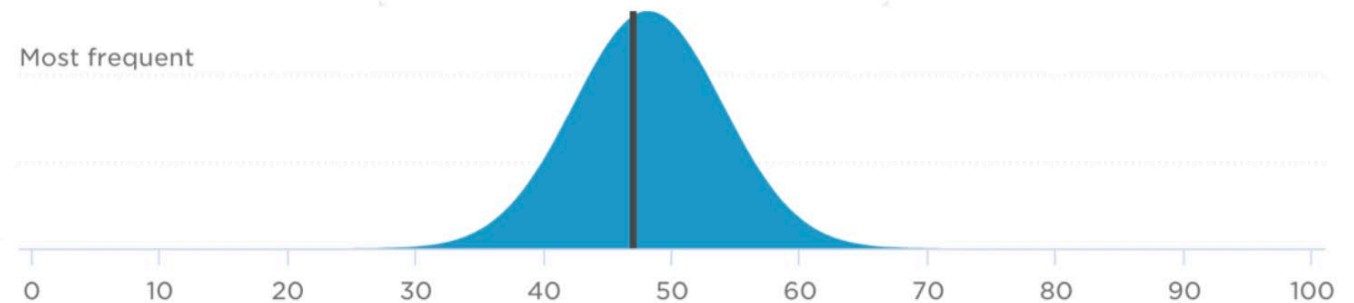
Self-Efficacy: Grades 6-12

Most frequent



near the **40th percentile** on this topic.

Most frequent





SEL Supports Provided in 2022-23



- SEL Lead in each school or program
 - Each school has identified at least one SEL Lead
- Responsibilities:
 - Leads SEL curricular resource development for their school
 - Facilitates meetings to analyze and review SEL data sources and develop a Tier 1 action plan
 - Coordinates the SEL Survey in the fall and spring for their school
 - Submits data to Student Services and Arlington Tiered Systems of Support (ATSS) to assist in monitoring progress and determining resource needs
- Central Office support for SEL Lead
 - Monthly meetings and professional learning provided
 - Developed an internal Site as a living central hub for *all things* APS SEL: lessons and resources, SEL Standards, Data Guides, Support contacts

Student SEL Starts with Staff



SEL Expectations for 2022-23

- Elementary: **20-30 minutes** of daily time focused on SEL instruction
 - Example: Daily Morning Meeting/Morning Circle
- Secondary: **30 minutes** two-times-a-week focused on SEL instruction
 - Example: Monday and Friday during Advisory
- School curriculum should be aligned to the appropriate grade-band of the [Virginia SEL Guidance Standards](#)
- School curriculum should emphasize areas of focus identified by data



Up Next

- SEL Survey Updates
 - Students in grades 3-12 will take the Panorama SEL Survey in the fall of 2022 and spring of 2023
 - opt-out opportunity is provided to families
 - Proposed fall administration dates: **Oct 25-28, 2022**
 - Proposed spring administration dates: **April 24-28, 2022**
- CASEL Audit
 - Program evaluation
 - Review of SEL Programs





Questions?



SEL and Three Signature Practices

1. Welcoming/Inclusive Activity

- Turn to your neighbor and share a memory of your favorite Halloween costume

2. Engaging content

3. Optimistic Closure

- Turn to your neighbor and share one take-away from this SEL presentation.



Darrell Sampson, EdD, MA, LPC, NCC
Executive Director, Office of Student Services
Department of School Support
darrell.sampson@apsva.us

Kristin Devaney, PhD
Supervisor, Student Services (Counseling)
kristin.devaney@apsva.us