



Special Education Communication at the Middle and High School Level

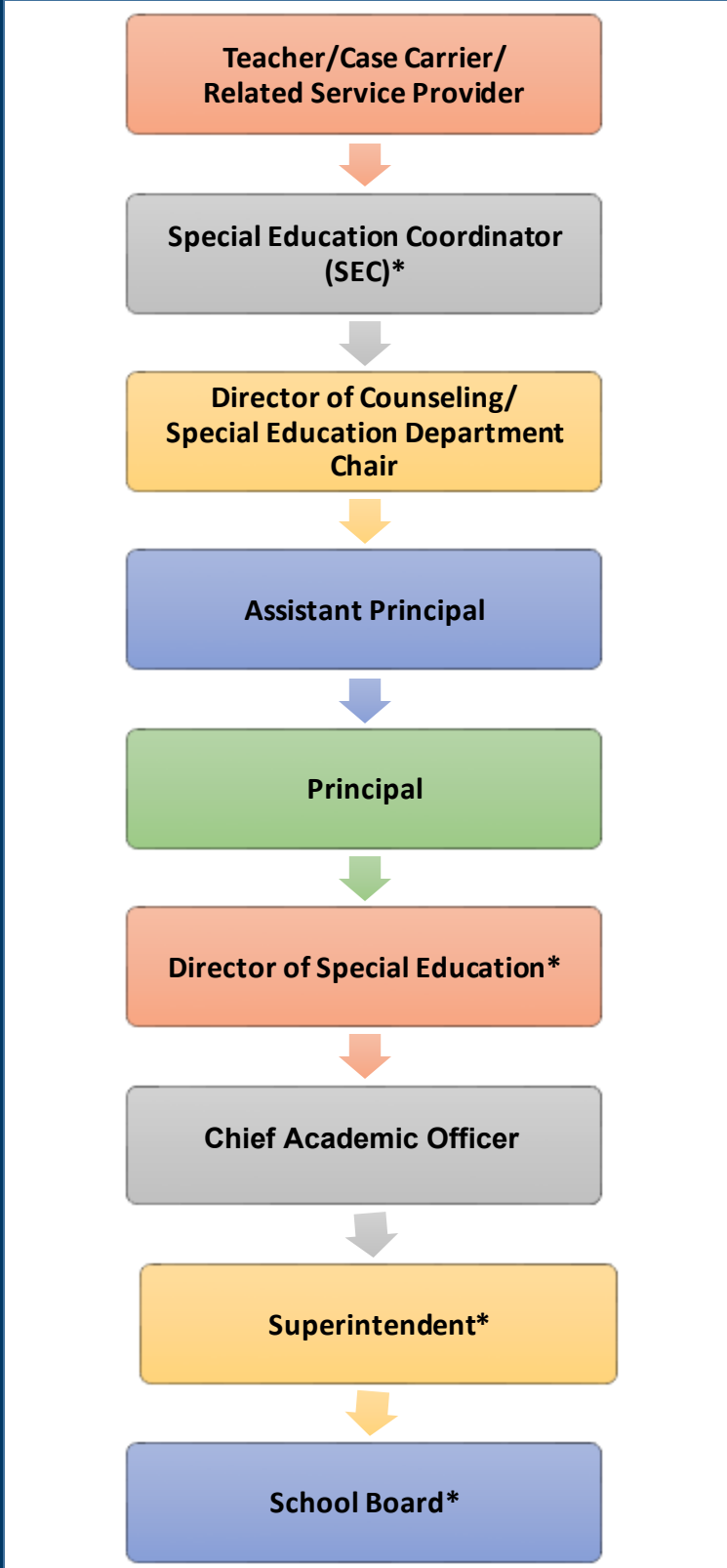
The **Parent Resource Center (PRC)** is a helpful support for all families in navigating the special education process, and seeking advice in resolving questions/concerns. *Not sure who to talk with? Need contact information? Have a question or concern? Contact the PRC at prc@apsva.us or 703.228.7239.*

In collaborating to address questions and resolve concerns, it is always best when possible to **start with your child's teacher, case carrier, or related service provider** (if the concern involves a related service).

The **Student Support Coordinator** (a central office staff member assigned to your school), can support teams in resolving concerns.

Need more help? The chart to the right provides a recommended communication sequence. Individuals within the sequence may also suggest connecting with IEP team members or other professionals (i.e. guidance counselors, school psychologists, specialists, etc.) who may be able to provide expertise and support.

[APS Division Organizational Chart](#)



* District level staff