



## Education Center Reuse Community Newsletter (February 2022)

Below is an update on the status and progress of construction for the Education Center Reuse project. All monthly updates are posted to the project website and can be accessed via the following link:

<https://www.apsva.us/education-center-reuse/>

During the month of February, the general contractor, [MCN Build](#), has been progressing activities throughout the building and site. On the exterior of the building, the general contractor has continued to focus on the new ramp connecting the Education Center to Washington Liberty High School as well as painting the façade of the building. On the interior, work has continued with building components including installation of handrails, exterior doors, and the entry vestibule. They have also continued with finishing drywall, installing ceiling grid, priming and painting the walls, installing new floor finishes, installing millwork, and installing building insulation throughout the floors.

The team is also heavily engaged with installing new mechanical, electrical, and plumbing (MEP) components on all floors of the building with an apparent focus on light fixtures, low voltage components, trim out of electrical devices, and the installation of the fire alarms system. Along with construction, the project team has continued to process submittals and engage in quality control reviews.

For the remainder of the project, the project team will be occupying the entire project site which will impact the sidewalks around the Education Center building and parking spots in the VDOT parking garage.

As a reminder the project's community liaison is Robin Hodges, Arlington Public Schools, Design and Construction Senior Project Manager who can be reached at (703) 872-9175 or [robin.hodges@apsva.us](mailto:robin.hodges@apsva.us).

*Jeffrey D. Chambers, NCARB, AIA, Director of Design & Construction*

## MAIN BUILDING UPDATE

### Completed and ongoing tasks:

- Project Submittal and Review Process (**Ongoing**)
- Installation and Maintenance of Temporary Building Protection (**Ongoing**)
- Installation of Below Grade Plumbing (**Ongoing**)
- Installation of MEP Components on All Floors (**Ongoing**)
- Installation of Curtain Wall Components (**Almost Complete**)
- Spray Fireproofing Installation (**Almost Complete**)
- New Exterior Ramp and Connection to the Washington Liberty High School Building (**Ongoing**)
- Installation of new exterior guard rails and hand rails (**Ongoing**)
- Installation of new 4<sup>th</sup> Floor Fritted Window Glass (**Complete**)
- New Roof Installation (**Almost Complete**)
- Stair A Installation (**Almost Complete**)
- Installation of Partition Framing on All Floors (**Almost Complete**)
- County Inspections for various floors and trades (**Ongoing**)
- Installation of Fire Suppression System throughout the building (**Almost Complete**)
- Ground Floor Partition Installation (**Almost Complete**)
- Installation of Round Column Covers Throughout the Building (**Ongoing**)
- Main IT Closet Buildout and Connection of Utilities (**Ongoing**)
- Flooring Preparation and Installation (**Ongoing**)
- Interior Painting (**Ongoing**)
- Exterior Painting (**Ongoing**)
- Installation of ceiling baffles (**Ongoing**)
- Installation of classroom and workroom millwork (**Ongoing**)
- Installation of technology throughout the building (**Ongoing**)
- Main Mechanical Unit Startup and Commissioning (**Ongoing**)
- Installation of Interior Glass Partitions (**Ongoing**)

### Construction activities planned next month:

- Exterior Asphalt Mill and Overlay
- Installation of landscaping components
- Installation of building monitoring systems

### Process related activities:

- Construction activities will continue between 7am to 5pm on weekdays and Saturdays. Sunday work is not scheduled at this time but may occur periodically as needed to stay on schedule.

## PLANETARIUM UPDATE

### Completed and ongoing tasks:

- Monitoring/Conditioning/Heating of Interior of Planetarium (**Ongoing**)
- New Mechanical and Plumbing Work Layout (**Almost Complete**)
- Fire Alarm System Rough Ins (**Ongoing**)
- Finishing activities for the interior of the planetarium (**Ongoing**)

### Construction activities planned next month:

- Commissioning of Systems

**Progress Photos:**



**View of the Front of the Building**



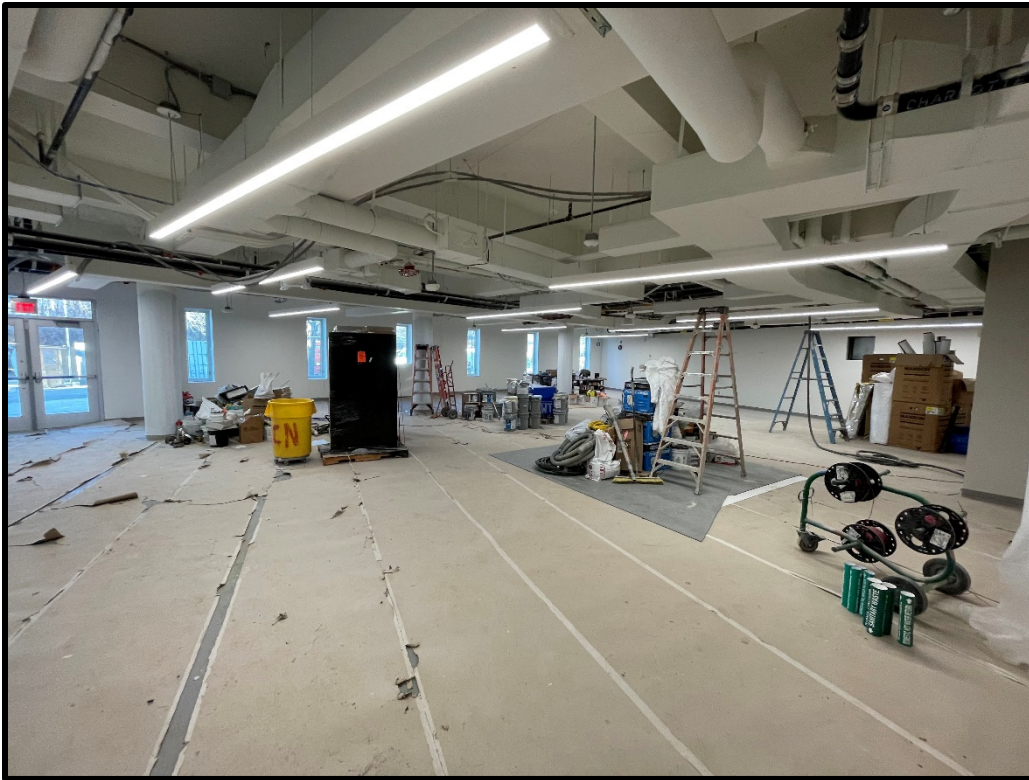
**View of the Rear of the Building**



**View of the Building from Entry to the Parking Lot**



**View of Exterior on East Side of Building**



**View of Work Ongoing on the Ground Floor**



**View of Work Ongoing on Level 1**



**View of Work Ongoing on Level 2**



**View of Work Ongoing on Level 3**



**View of Work Ongoing on Level 4**



**View of Stair A**



**View of Work in Progress at Corner Room on Third**



**View of Work Ongoing on Main Ramp**





**View of Work in Progress at Planetarium Corridor**



**View of Work in Progress at Planetarium Inner Bowl**