



## Education Center Reuse Community Newsletter (November 2021)

Below is an update on the status and progress of construction for the Education Center Reuse project. All monthly updates are posted to the project website and can be accessed via the following link:

<https://www.apsva.us/education-center-reuse/>

During the month of November, the general contractor, [MCN Build](#), has been progressing activities throughout the building and site. Demolition has been nearly completed and as such, the general contractor has shifted focus onto completing the required structural renovations to the structure including ground floor concrete and intermediate floor concrete slabs. The exterior ramp connecting the Education Center to Washington Liberty High School continues to progress towards completion as well. The team has continued to work on components within the interior of the building including laying out and framing new partitions, installing drywall, furthering the fireproofing of structural members, installing ceiling grid, progressing exterior concrete repairs, waterproofing, roofing, and coordination on startup of new HVAC systems has begun.

For the remainder of the project, the project team will be occupying the entire project site which will impact the sidewalks around the Education Center building and parking spots in the VDOT parking garage.

As a reminder the project's community liaison is Robin Hodges, Arlington Public Schools, Design and Construction Senior Project Manager who can be reached at (703) 872-9175 or [robin.hodges@apsva.us](mailto:robin.hodges@apsva.us).

*Jeffrey D. Chambers, NCARB, AIA, Director of Design & Construction*

## MAIN BUILDING UPDATE

### Completed and ongoing tasks:

- Project Submittal and Review Process **(Ongoing)**
- Installation and Maintenance of Temporary Building Protection **(Ongoing)**
- Installation of Below Grade Plumbing **(Ongoing)**
- Interior Framing of Existing Steel Columns **(Ongoing)**
- Installation of MEP Components on All Floors **(Ongoing)**
- Installation of Curtain Wall Components **(Almost Complete)**
- Installation of Drywall and Insulation on Floors 1-4 **(Ongoing)**
- Spray Fireproofing Installation **(Almost Complete)**
- New Exterior Ramp and Connection to the Washington Liberty High School Building **(Ongoing)**
- Installation of new 4<sup>th</sup> Floor Fritted Window Glass **(Almost Complete)**
- New Roof Installation **(Almost Complete)**
- Exterior Concrete Repairs **(Almost Complete)**
- Stair A Installation **(Ongoing)**
- Installation of Partition Framing on All Floors **(Ongoing)**
- County Inspections for various floors and trades **(Ongoing)**
- Installation of Ramp Connections along General's Way at W&L **(Ongoing)**
- Installation of Fire Suppression System throughout the building **(Ongoing)**
- Concrete Infills for Existing Elevator Shaft **(Complete)**
- Installation of CMU Platform **(Ongoing)**

### Construction activities planned next month:

- MEP Coordination, Layout, and Rough Ins
- Ground Floor Partition Installation
- Demolition of Existing Site Retaining Walls
- Installation of Round Column Covers Throughout the Building
- Main IT Closet Buildout and Connection of Utilities
- Installation of relocated site light nearest the existing stair tower

### Process related activities:

- Construction activities will continue between 7am to 5pm on weekdays and Saturdays. Sunday work is not scheduled at this time but may occur periodically as needed to stay on schedule.

## PLANETARIUM UPDATE

### Completed and ongoing tasks:

- Monitoring/Conditioning/Heating of Interior of Planetarium **(Ongoing)**
- New Interior Build Out Scope Detailing **(Complete)**
- New Mechanical and Plumbing Work Layout **(Ongoing)**

### Construction activities planned next month:

- Layout of Interior Build Out Scope
- Fire Alarm System Rough Ins
- Utility reconnections in the tunnel connection between Ed Center and the Planetarium

### Progress Photos:



**View of the Front of the Building**



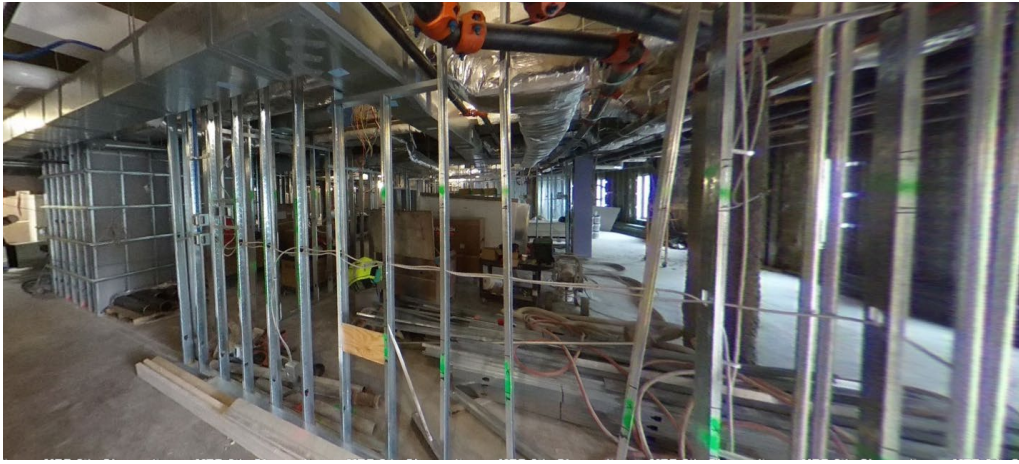
**View of the Rear of the Building**



**View of the Building from Washington Liberty High School**



**View of Exterior on East Side of Building**



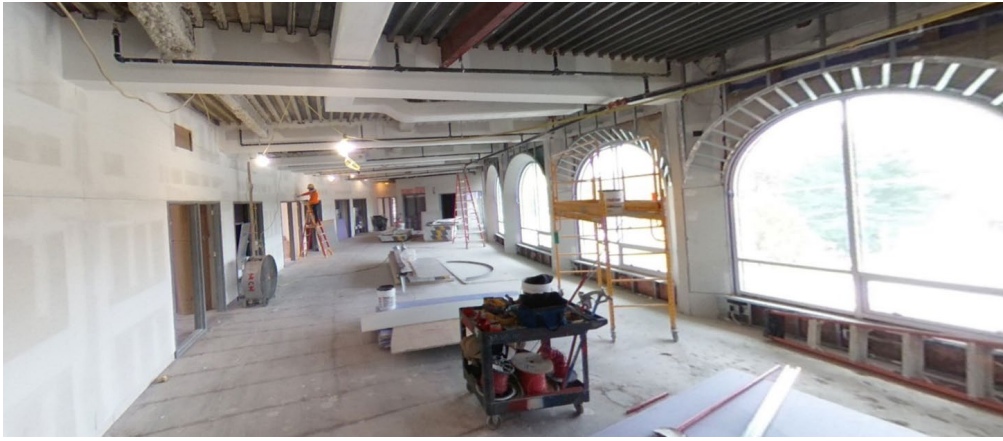
**View of Work Ongoing on the Ground Floor**



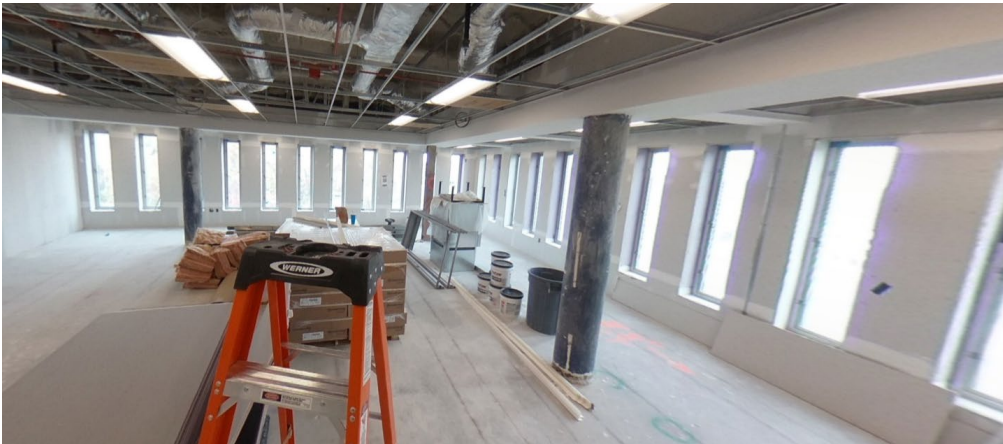
**View of Work Ongoing on Level 1**



**View of Work Ongoing on Level 2**



**View of Work Ongoing on Level 3**



**View of Work Ongoing on Level 4**



**View of Stair A**