

VISION ZERO

ARLINGTON COUNTY

Demonstration School Slow Zones Proposed Draft Plans & Locations

Fall 2021

Developed by:
Arlington County Transportation Engineering & Operations
Arlington Public Schools
Safe Routes to School



Agenda

Introductions

Purpose & Need

New School Slow Zone Speed Limits & Delineation

Slow Zone Signs & Pavement Markings

Proposed Demonstration Locations

Demonstration Maps

Data & Feedback Collection

Tentative Timeline



Purpose & Need

Slower speeds around schools is beneficial for everyone:

- One in four crashes in Arlington involves speeding.
- Every year, there are 10+ crashes involving speeding around schools.
- The risk of injuries and deaths increases as vehicle speed increases.
- It is critical that we make school zones safe, because children are still learning how to travel safely.

Creating new school zone guidelines is recommended in the [Vision Zero Action Plan](#):

- School Zone Guidelines will set standards for speed limits, typical signs, crosswalks, pavement markings, and other aspects in areas within 600 feet of school access points.
- We plan to make all school zone speed limits as 20 or 25mph as part of the guidelines—either *dynamically* using beacons at arrival/dismissal times or *statically* using new permanent slow zones.
- The purpose of these school slow zone demonstrations is to test the proposed school slow zone treatments in a few locations to see how they work before we invest countywide.

New School Slow Zone Speed Limits & Delineation

Arterial Streets

Within 600ft of school access:

25-30MPH Roads → 20MPH

35-40MPH Roads → 25MPH



Dynamic: Delineated with beacon; Speed limit changes at arrival & dismissal times

Local/Neighborhood Streets

Within 600ft of school access:

All Roads → 20MPH



Static: Delineated with standard speed limit sign; 20MPH at all times

School Slow Zone Signs & Marking Details

Infrastructure characteristics on local/neighborhood streets within 600ft of a school access point:

- “Speed Limit 20” (R2-1) sign with a “School” (S4-3P) sign on top
- “NEW” signs as we roll out the program
- “20 MPH” pavement markings to reinforce that the speed limit is constant. Used primarily where transitioning from a higher volume/speed road to a lower volume/speed road OR adjacent to school
- “End of School Zone”(S-5-2) or speed limit signs where slow zone ends
- School Crossing (S1-1) signs and high visibility markings at crosswalks within the slow zone
- Remove “When Flashing” from school beacon signs in areas with existing beacons that now qualify for static school slow zones; continue to operate school beacons during school arrival/ dismissal



Proposed Demonstration Locations

11 APS schools + 1 private school identified to demonstrate the school slow zone concept in different environments and assess if the materials effectively reduce vehicle speeds:

- Identified because existing beacons need immediate replacement:
 - Tuckahoe Elementary
 - Glebe Elementary
 - Wakefield High
 - Claremont Elementary (next to Wakefield so school zones merge/need coordination)
 - St. Thomas More
- Identified through Vision Zero (near the [High-Injury Network](#) & within MWCOCG's [Equity Emphasis Areas](#)):
 - Hoffman Boston Elementary
 - Gunston Middle
 - Drew Elementary
- Identified in coordination with New School Working Group:
 - Former Arlington Traditional/New Key-Escuela Key ES (new location)
 - Former McKinley ES/New Arlington Traditional (new location)
 - Former Key ES/New Innovation ES (new school)
 - Cardinal ES (new school)

Tuckahoe Elementary School Slow Zone

Beacon School Zone

- N Sycamore St, between 27th St N & 24th St N

Static School Slow Zone

- 26th St N, from N Underwood St to N Sycamore St
- N Underwood St, from 26th St N to Langston Blvd
- 24th St N, from N Underwood St to N Tuckahoe St
- N Tuckahoe St, from Dead End to Langston Blvd



20MPH Beacon



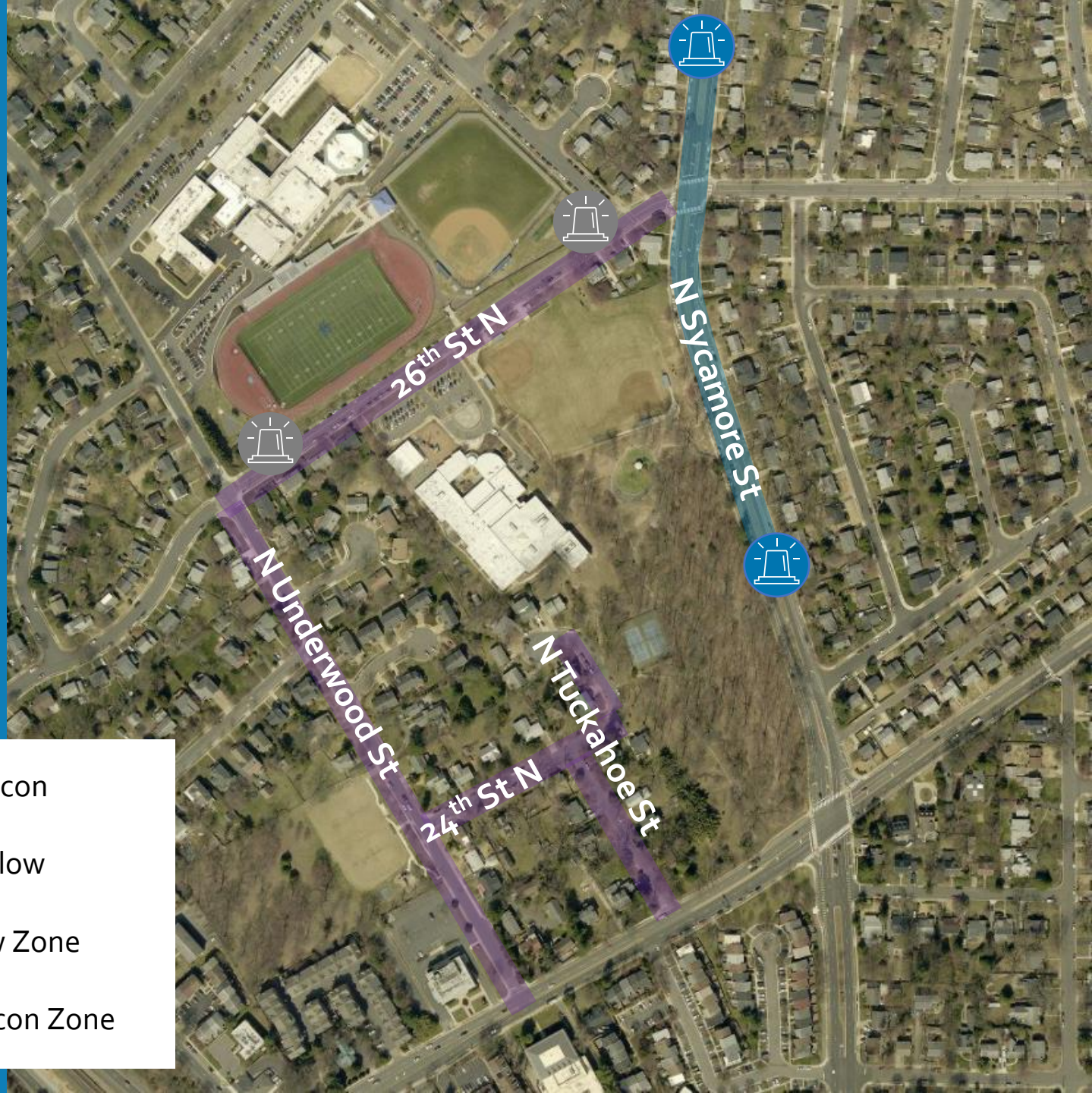
Beacon in Slow



School Slow Zone



School Beacon Zone



Glebe Elementary School Slow Zone

Beacon School Zone

- N Glebe Rd, between 20th St N & 17th St N

Static School Slow Zone

- N Culpeper St, from 19th St N to 17th St N
- 20th St N, from N Glebe Rd to Dead End



25MPH Beacon (VDOT)



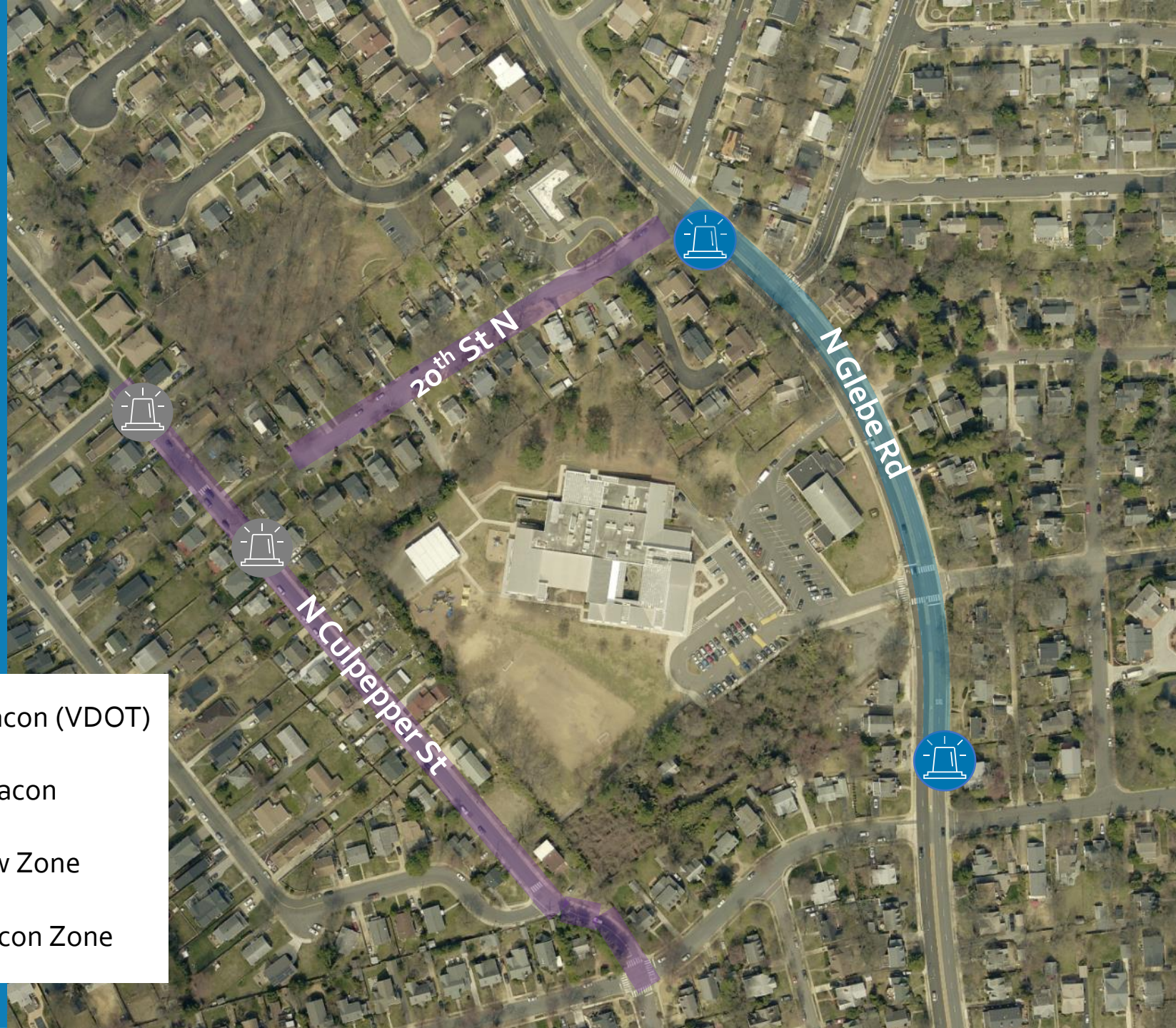
Existing Beacon



School Slow Zone



School Beacon Zone



Claremont Elementary & Wakefield High School Slow Zone





Beacon School Zone

- S George Mason, S Edison St to S Dinwiddie St

Static School Slow Zone

- S Chesterfield St/S Columbus St, from S Dinwiddie St to 14th St S
- S Dinwiddie St, from S Chesterfield St to S George Mason Dr
- S Buchanan St, from S Chesterfield St to 23rd Rd S*
- 23rd St S, from S Columbus St to Dead End
- 14th St S, from S Dinwiddie St to S Greenbrier St
- S Frederick St, from 12th St S to S George Mason Dr



	20 MPH Beacon		School Slow Zone
	Existing Beacon		School Beacon Zone

St. Thomas More (PreK-8) School Slow Zone

Static School Slow Zone

- N Thomas St, from 2nd Rd N to Cathedral Ln
- Cathedral Ln, from N Glebe Rd to N Thomas St



 School Slow Zone

 School Beacon Zone

Hoffman Boston Elementary School Slow Zone

Static School Slow Zone

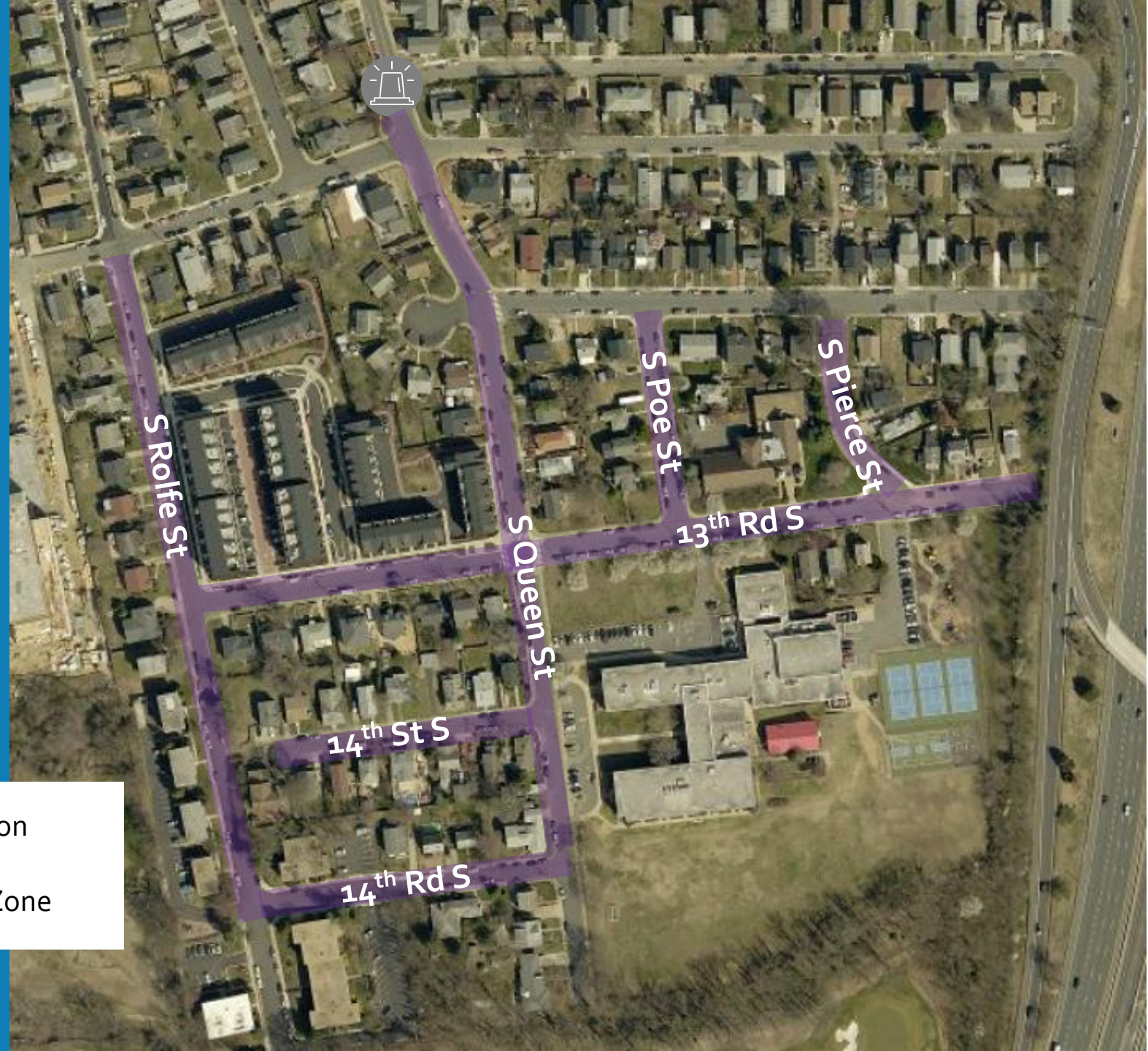
- S Queen St, from 13th St S to Dead End
- 13th Rd S, from S Rolfe St to Dead End
- S Rolfe St, from 12th St S to 14th Rd S
- 14th Rd S, from S Rolfe St to S Queen St
- 14th St S, from Dead End to S Queen St
- S Poe St, from 13th St S to 13th Rd S
- S Pierce St, from 13th St S to 13th Rd S



Existing Beacon



School Slow Zone



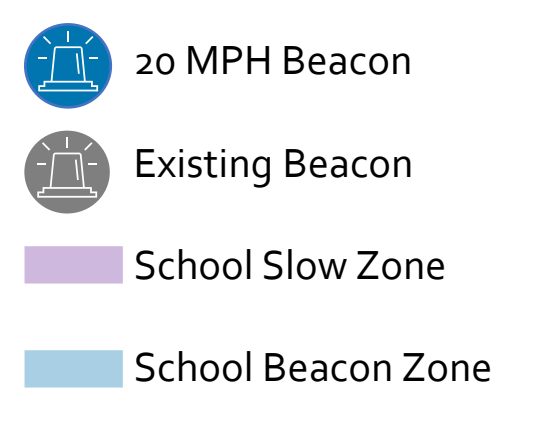
Gunston Middle School Slow Zone

Beacon School Zone

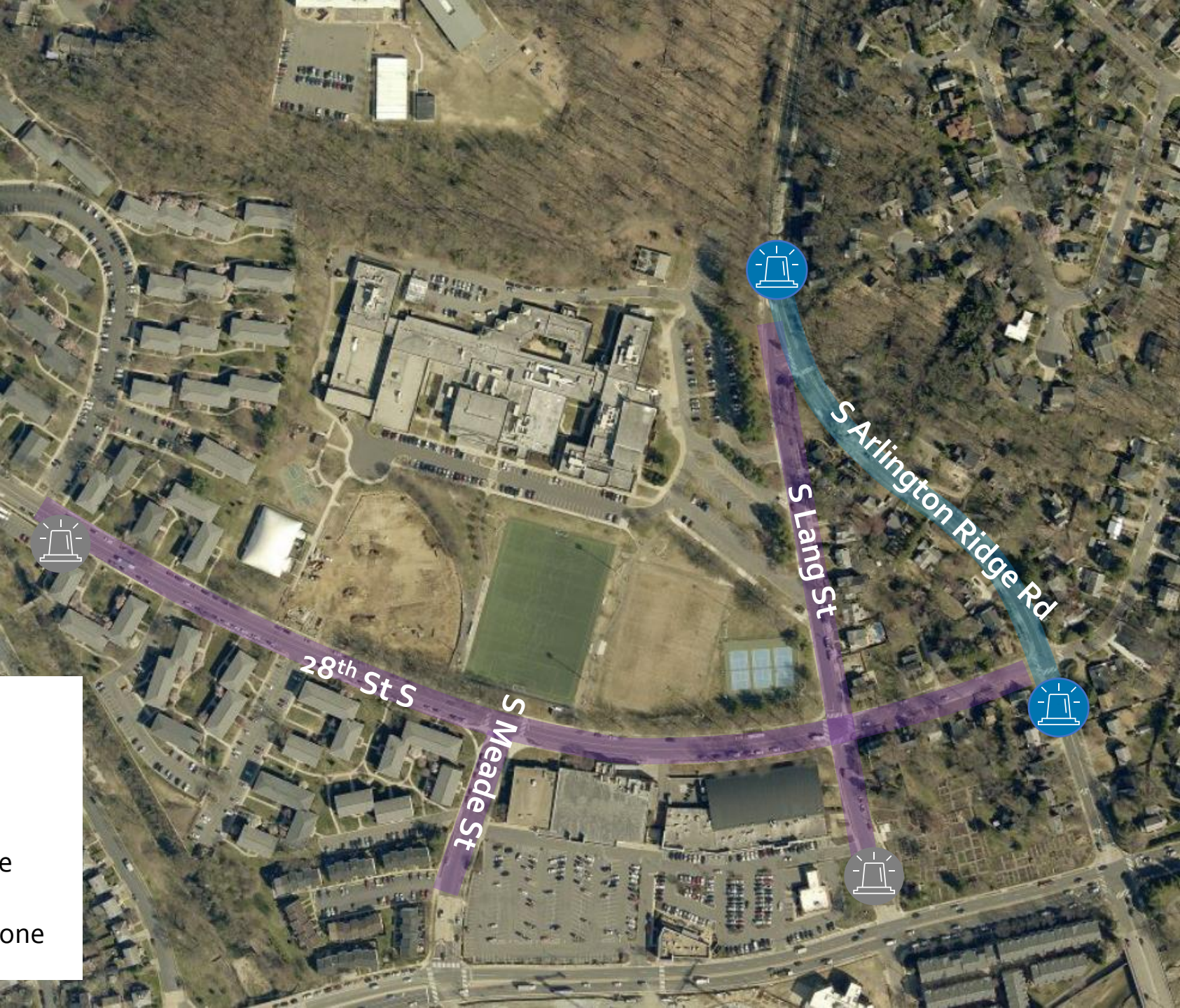
- S Arlington Ridge Rd, S Edison St to 28th St S

Static School Slow Zone

- S Lang St, from S Arlington Ridge Rd to S Glebe Rd
- 28th St S, from 28th St S to S Arlington Ridge Rd
- S Meade St, from 28th St S to S Glebe Rd



The legend is located in the bottom left corner of the image. It contains four items: a blue bell icon with a light beam, labeled '20 MPH Beacon'; a grey bell icon with a light beam, labeled 'Existing Beacon'; a purple rectangular bar, labeled 'School Slow Zone'; and a blue rectangular bar, labeled 'School Beacon Zone'.



Drew Elementary School Slow Zone

Static School Slow Zone

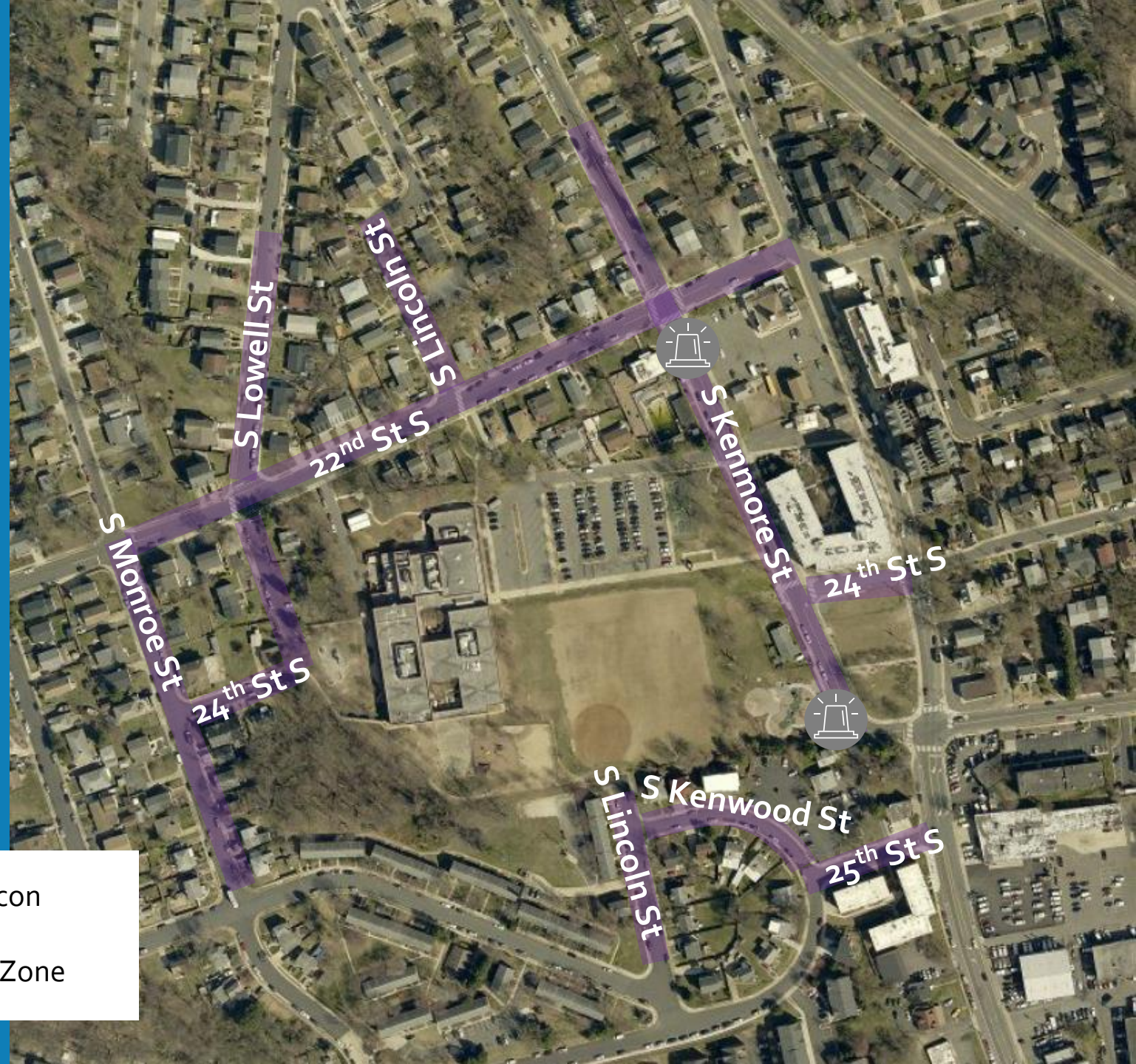
- S Kenmore St, from Shirlington Rd to 19th St S
- 22nd St S, from S Monroe St to Shirlington Rd
- S Monroe St, from 22nd St S to 24th St S
- S Lincoln St, from S Lowell St to S Kenwood St
- S Kenwood St, midblock to Shirlington Rd
- 24th St S, from S Monroe St to S Lowell St
- S Lowell St, from 24th St S to 20th St S
- S Lincoln St, from 22nd St S to 21st St S
- 24th St S, from S Kenmore St to Shirlington Rd



Existing Beacon



School Slow Zone



Escuela Key Elementary School Slow Zone

Beacon School Zone

- N George Mason Dr, from I-66 to Wilson Blvd

Static School Slow Zone

- N Edison St, from Wilson Blvd to Fairfax Dr
- Fairfax Dr, from N Buchanan St to N Edison St
- 9th St N, from N Frederick St to N Edison St
- 8th Rd N, from N Frederick St to N Edison St
- 9th St N, from N George Mason Dr to N Burlington St



20 MPH Beacon



School Slow Zone



School Beacon Zone



Arlington Traditional Elementary School Slow Zone

Beacon School Zone

- N McKinley Rd, from 10th Rd N to 9th Rd N

Static School Slow Zone

- 9th Rd N, from N Manchester St to N Quantico St
- N Potomac St, from N Quantico St to 11th St N
- N Nottingham St, from 9th Rd N to N Quantico St
- 10th Rd N, from N Ohio St/N McKinley Rd to N Montana St



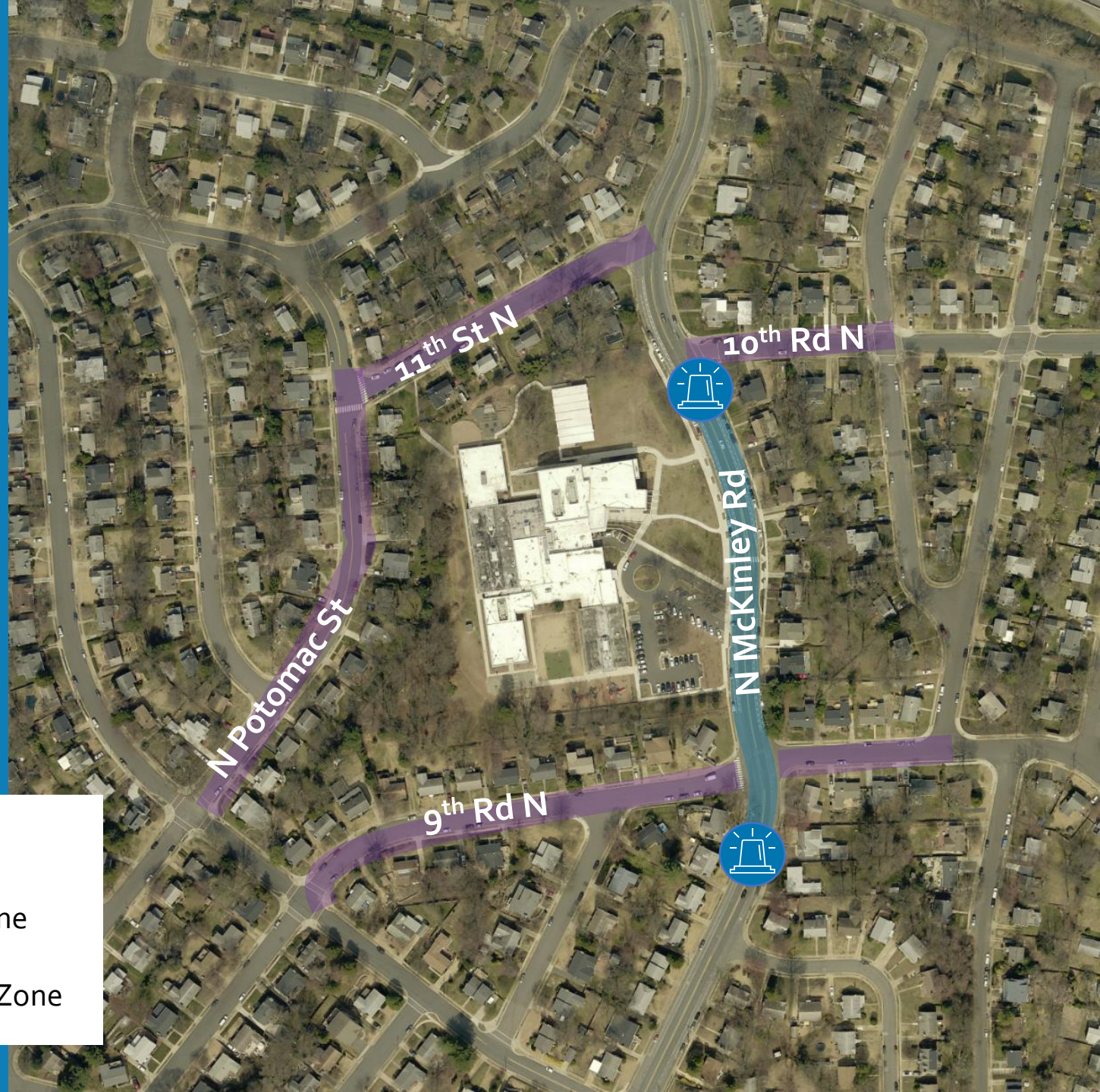
20 MPH Beacon



School Slow Zone



School Beacon Zone



Innovation Elementary School Slow Zone

Beacon School Zone

- N Veitch St, between Wilson Blvd & 18th St N

Static School Slow Zone

- Key Blvd, from N Uhle St to N Adams St
- N Adams St, from 18th St N to 16th St N
- N Wayne St, from 18th St N to Key Blvd
- 16th St N, from N Barton St to N Adams St
- N Custis Rd, from N Barton St to 16th St N/N Adams St



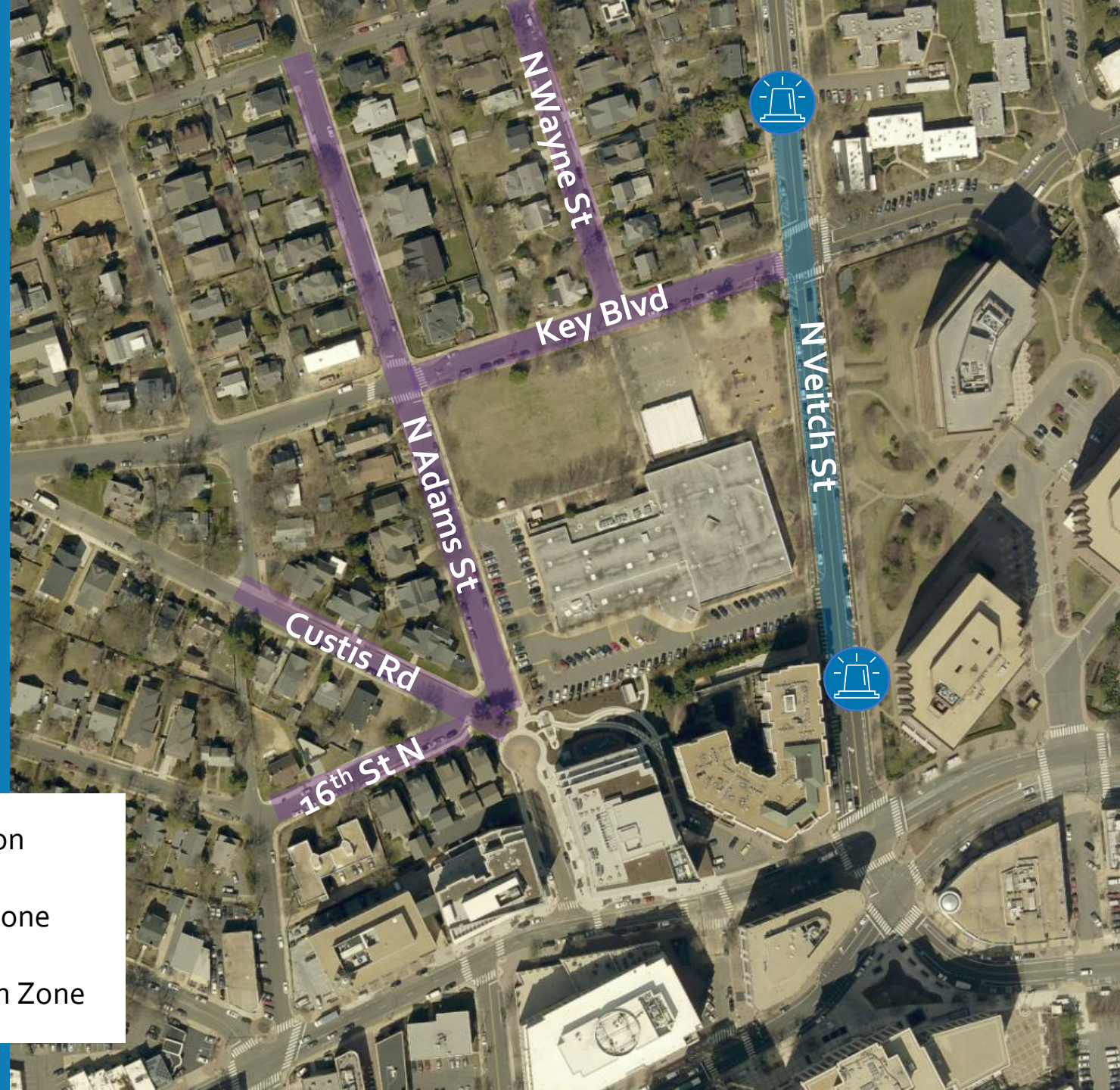
20 MPH Beacon



School Slow Zone



School Beacon Zone



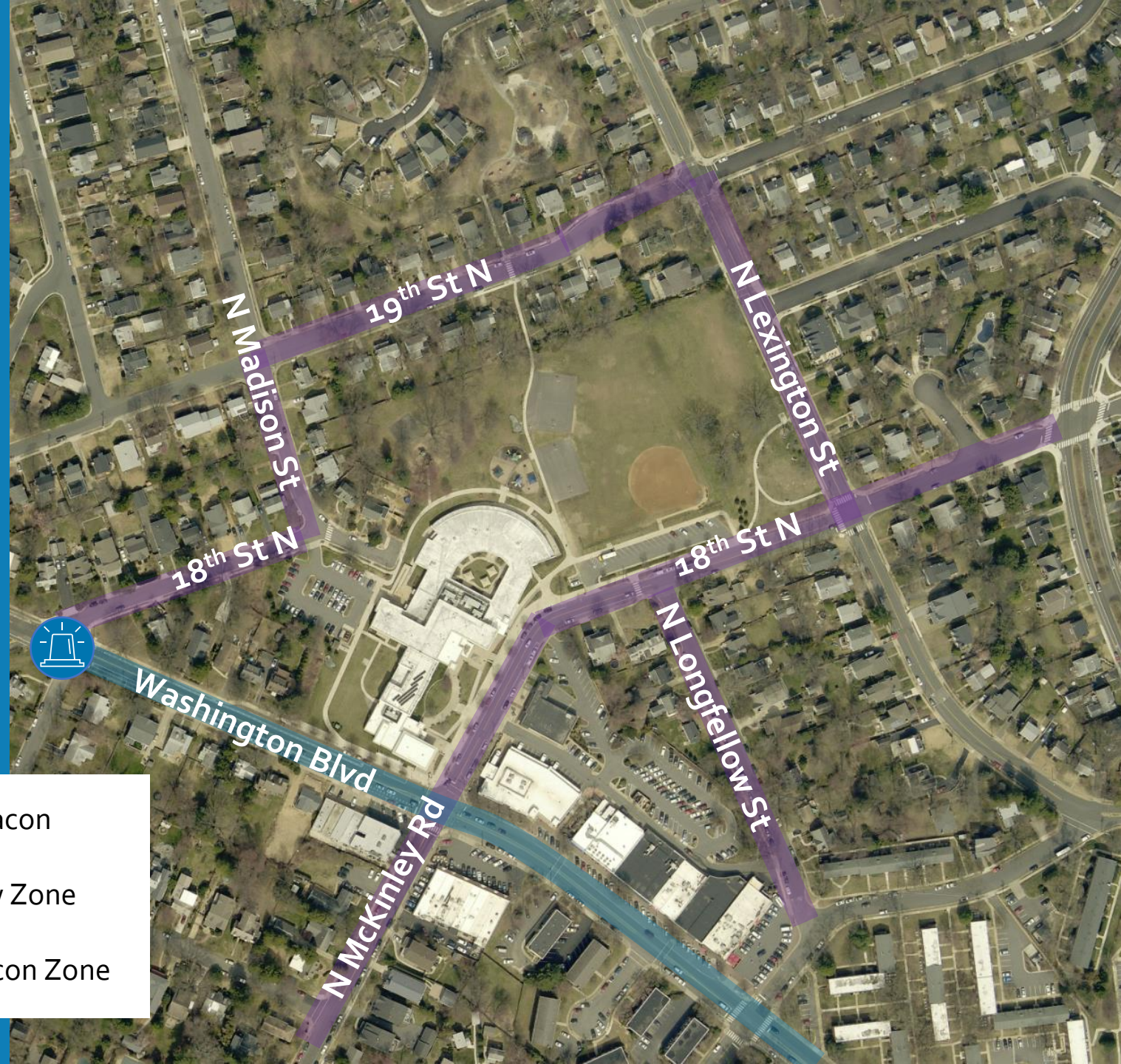
Cardinal Elementary School Slow Zone


Beacon School Zone


- Washington Blvd, 18th St N to N Kentucky St


Static School Slow Zone

- N McKinley St/18th St N, from 16th St N to Patrick Henry Dr
- N Longfellow St, from 18th St N to 16th St N
- N Lexington St, from 19th St N to 18th St N
- 19th St N, from N Madison St to N Lexington St
- N Madison St, from 19th St N to 18th St N
- 18th St N, from Washington Blvd to N Madison St

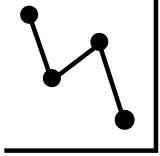


 20 MPH Beacon

 School Slow Zone

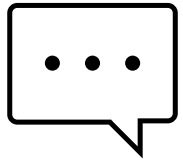
 School Beacon Zone

Data & Feedback Collection



Collect before/after speed data to assess the effectiveness of the school slow zones

- Before data to be collected Sept – Nov
- After data to be collected Feb – April



Gather feedback from the community during the demonstration

- Feedback to be collected and assessed in Spring of 2022
- Engagement objectives:
 - Gather public perception on the effectiveness of the school slow zones.
 - Identify ways to improve the school slow zones as we implement countywide.
- Outreach conducted through:
 - County communication channels (emails, social media, etc.)
 - APS communication forums
 - ACPD Communications forums
 - Civic Associations
 - Bike / Walk Arlington

Proposed Timeline

