



Education Center Reuse Community Newsletter (August 2021)

Below is an update on the status and progress of construction for the Education Center Reuse project. All monthly updates are posted to the project website and can be accessed via the following link:

<https://www.apsva.us/education-center-reuse/>

During the month of August, the general contractor, [MCN Build](#), has been progressing activities throughout the building and site. Demolition continues to be one of the critical on-going activities, and this month has included the demolition of the existing elevator shaft down to the second floor as well as the demolition of the existing patio roofing along the rear of the building. Progress continues to be made on the roof, with the installation of the new roof nearing completion. The team has also continued work on critical components of the new structure including setting new steel for the floors and stairs, installing new exterior curtain wall assemblies, laying out and framing new floor partitions, furthering the fireproofing of structural members, and progressing exterior concrete repairs. The team is also heavily engaged with installing new mechanical, electrical, and plumbing (MEP) components on the ground floor through the fourth floor with an apparent focus on duct, piping, and electrical rough in installations. Along with construction, the project team has continued to process submittals and engage in quality control reviews.

For the remainder of the project, the project team will be occupying the entire project site which will impact the sidewalks around the Education Center building and parking spots in the VDOT parking garage.

As a reminder the project's community liaison is Robin Hodges, Arlington Public Schools, Design and Construction Project Manager who can be reached at (703) 872-9175 or robin.hodges@apsva.us.

Jeffrey D. Chambers, NCARB, AIA, Director of Design & Construction

MAIN BUILDING UPDATE

Completed and ongoing tasks:

- Project Submittal and Review Process **(Ongoing)**
- Installation and Maintenance of Temporary Building Protection **(Ongoing)**
- Demolition of Original Elevator Shaft **(Ongoing)**
- New Elevator Shaft Installation **(Elevator Assembly Steel Ongoing)**
- Installation of Below Grade Plumbing **(Ongoing)**
- Interior Framing of Existing Steel Columns **(Ongoing)**
- Installation of MEP Components on All Floors **(Ongoing)**
- Installation of Curtain Wall Components **(Ongoing)**
- Spray Fireproofing Installation **(Ongoing)**
- New Exterior Ramp and Connection to the Washington Liberty High School Building **(Ongoing)**
- Installation of new 4th Floor Fritted Window Glass **(Almost Complete)**
- New Roof Installation **(Ongoing)**
- Exterior Concrete Repairs **(Ongoing)**
- Stair A Installation **(Ongoing)**
- Installation of Partition Framing on all floors **(Ongoing)**
- Energy Recovery Unit Installation **(Ongoing)**
- Installation of Ground Floor Windows **(Ongoing)**
- County Inspections for various floors and trades **(Ongoing)**
- Installation of Ramp Connections along General's Way at W&L **(Ongoing)**
- Installation of Rectangular Rapid Flashing Beacons (RRFB) along N Quincy Street **(Ongoing)**

Construction activities planned next month:

- MEP Coordination, Layout, and Rough Ins
- Third Floor Room Mock Ups
- Ground Floor Partition Installation
- Demolition of Existing Site Retaining Walls
- Installation of Main Building Mechanical Units

Process related activities:

- Construction activities will continue between 7am to 5pm on weekdays and Saturdays. Sunday work is not scheduled at this time but may occur periodically as needed to stay on schedule.

PLANETARIUM UPDATE

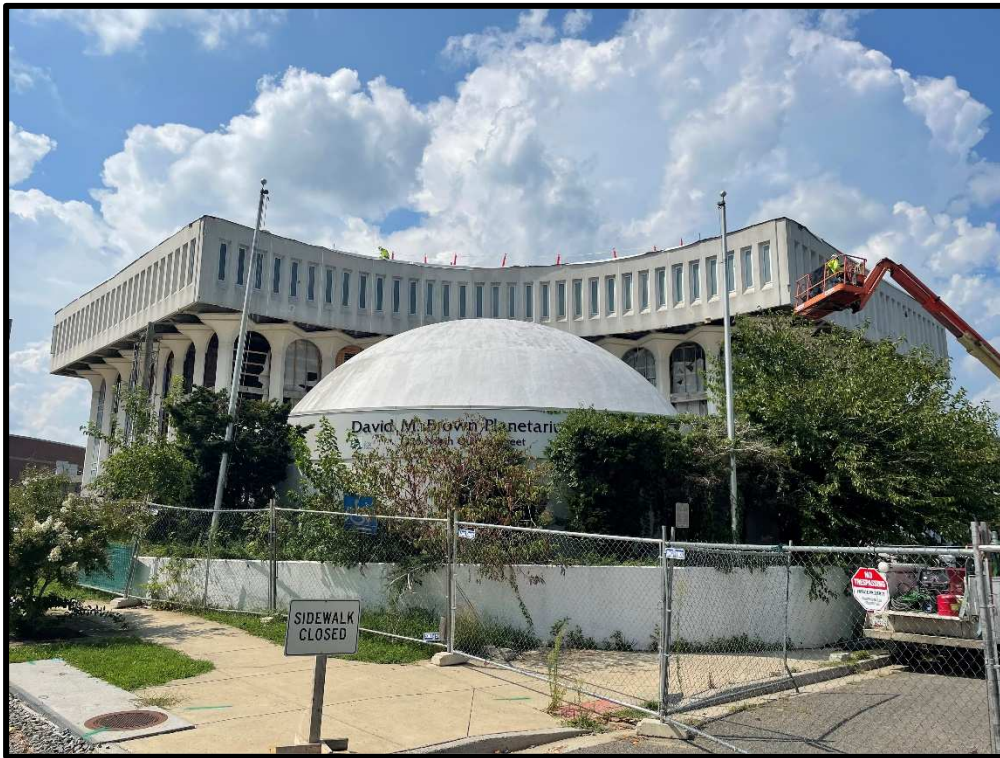
Completed and ongoing tasks:

- Monitoring/Conditioning of Interior of Planetarium **(Ongoing)**
- Existing Mechanical and Plumbing Work Demolition **(Complete)**
- New Interior Build Out Scope Detailing **(Ongoing)**
- New Mechanical and Plumbing Work Layout **(Ongoing)**

Construction activities planned next month:

- Layout of Interior Build Out Scope

Progress Photos:



View of the Front of the Building



View of the Rear of the Building



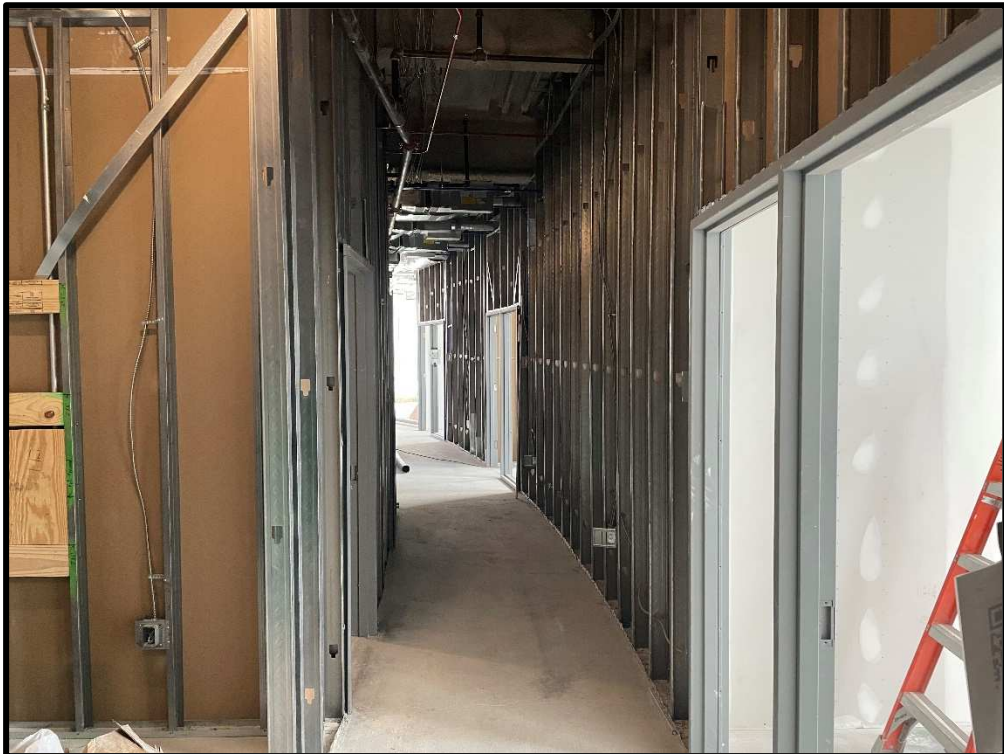
View of the Building from Washington Liberty High School



View of Exterior on East Side of Building



View of Work Ongoing on the Ground Floor



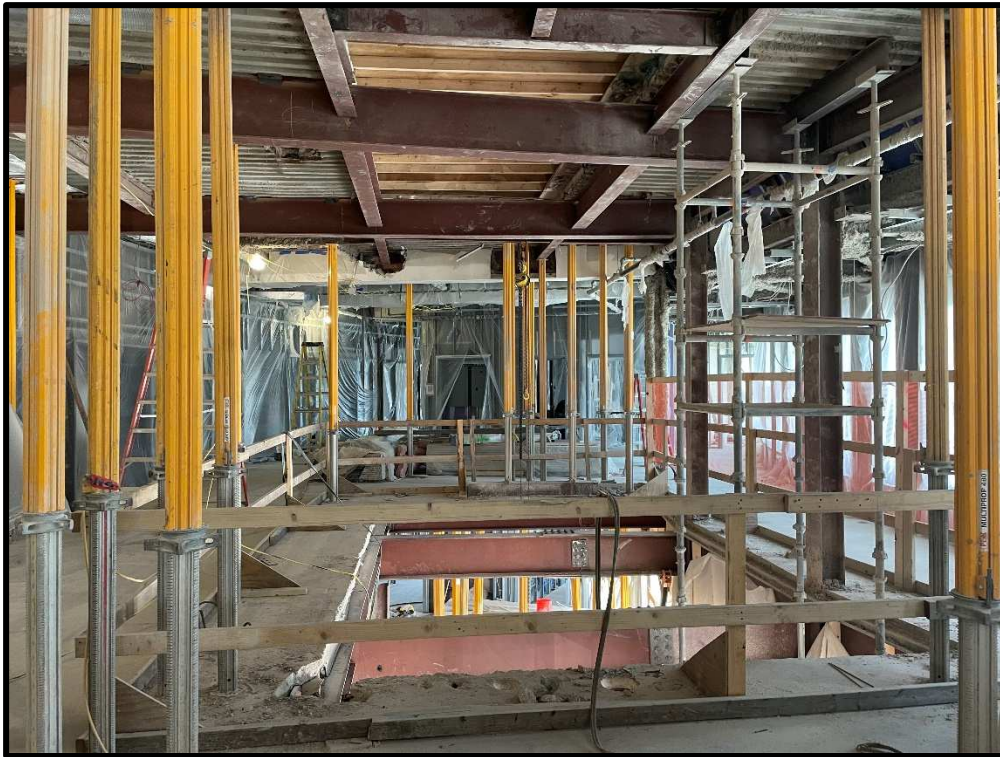
View of Work Ongoing on Level 1



View of Work Ongoing on Level 2



View of Work Ongoing on Level 3



View of Work Ongoing on Level 4



View of Working Ongoing on Roof