



Education Center Reuse Community Newsletter (June 2021)

This is the June 2021 update on the status and progress of construction for the project. All monthly updates are posted to the project website and can be accessed via the following link:

<https://www.apsva.us/education-center-reuse/>

During the month of June, the general contractor, [MCN Build](#), has been progressing activities throughout the building and site. Demolition continues to be one of the critical on-going activities and this month has included demolition related to the Stair A construction. The next major demolition component will be the removal of the existing elevator shaft. The team has also continued work on critical components of the new structure including setting new canopy and floor framing steel, installing new exterior curtain wall assemblies and glass, laying out and framing new floor partitions, and concrete repairs. The team is also heavily engaged with installing new mechanical, electrical, and plumbing (MEP) components on all the floors with the focus being on duct, piping, and electrical rough in installation. The MEP team also set the new energy recovery unit. The installation of the new building roof is ongoing with the new roof anchors installation completing this month. Along with construction, the project team has continued to process submittals and engage in quality control reviews.

For the remainder of the project, the project team will be occupying the entire project site which will impact the sidewalks around the Ed Center building and parking spots in the VDOT parking garage.

As a reminder the project's community liaison is Robin Hodges, Arlington Public Schools, Design and Construction Project Manager who can be reached at (703) 872-9175 or robin.hodges@apsva.us.

Jeffrey D. Chambers, NCARB, AIA, Director of Design & Construction

MAIN BUILDING UPDATE

Completed and ongoing tasks:

- Project submittal and review process **(Ongoing)**
- Installation of Temporary Building Protection **(Ongoing)**
- New Elevator Shaft Installation **(Concrete Complete, Steel Ongoing)**
- Installation of Below Grade Plumbing **(Ongoing)**
- Interior Framing of Existing Steel Columns **(Ongoing)**
- Stair A Installation **(Ongoing)**
- New Stair B Shear Wall Installation **(Complete)**
- Installation of MEP Components on Fourth Floor **(Ongoing)**
- Installation of MEP Components on Third Floor **(Ongoing)**
- Installation of MEP Components on Second Floor **(Ongoing)**
- Installation of MEP Components on First Floor **(Ongoing)**
- Installation of Curtain Wall Components **(Ongoing)**
- Spray Fireproofing Installation on All Floors **(Ongoing)**
- New Exterior Ramp Connection **(Ongoing)**
- Curtain Wall Installation and Testing **(Ongoing)**
- Roof Fall Protection Installation **(Complete)**
- Exterior Concrete Repairs **(Ongoing)**
- Curtain Wall Mockup with Glass **(Ongoing)**
- Installation of Partition Framing on First Floor **(Ongoing)**
- Energy Recovery Unit Installation **(Ongoing)**

Construction activities planned next month:

- Fourth Floor Room Mock Ups
- Demolition of Existing Elevator Shaft
- Ground Floor Partition Layout
- Installation of Rectangular Rapid Flashing Beacons (RRFB) along N Quincy Street
- Existing Roof Demolition and New Roof Installation

Process related activities:

- Construction activities will continue between 7am to 5pm on weekdays and Saturdays. Sunday work is not scheduled at this time but may occur periodically as needed to stay on schedule.

PLANETARIUM UPDATE

Completed and ongoing tasks:

- Layout of new facilities for Planetarium **(Ongoing)**
- Installation of New Mechanical and Plumbing Work **(Ongoing)**
- New Interior Build Out Scope Detailing **(Ongoing)**

Progress Photos:



View of the Front of the Building



View of the Rear of the Building



View of the Building from Washington Liberty High School



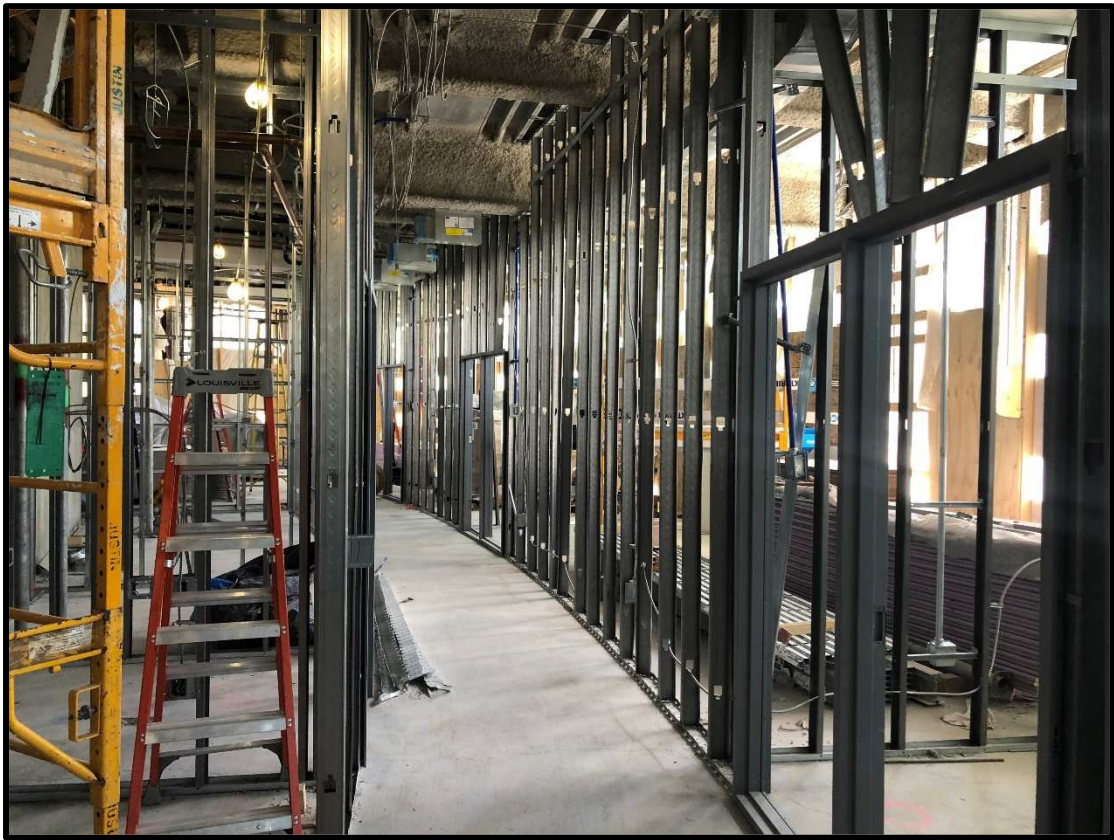
View of Exterior on East Side of Building



View of New Energy Recovery Unit Installation



View of Work Ongoing on the Ground Floor



View of Work Ongoing on Level 1



View of Work Ongoing on Level 2



View of Work Ongoing on Level 3



View of Work Ongoing on Level 4



View of Working Ongoing on Roof



View of Working Ongoing in Planetarium