



**SECONDARY**  
**THIRD QUARTER 2020-21**  
**GRADE REPORT**



# Table of Contents

SECONDARY GRADE REPORT .....	1
Summary .....	2
Middle School Grade Distribution .....	3
Grade Distribution - Middle .....	4
Race/Ethnicity .....	5
Asian .....	6
Black .....	7
Hispanic .....	8
Other .....	9
White .....	10
SWD & Non SWD .....	11
EL 1-4 .....	12
EL 6 .....	13
EL Proficient .....	14
Black Non EL .....	15
Hispanic Non EL .....	16
504 & Non 504 .....	17
Econ. Disadvantaged .....	18
High School Grade Distribution .....	19
Grade Distribution - High .....	20
Race/Ethnicity .....	21
Asian .....	22
Black .....	23
Hispanic .....	24
Other .....	25
White .....	26
SWD & Non SWD .....	27
EL 1-4 .....	28
EL 6 .....	29
EL Proficient .....	30
Black Non EL .....	31
Hispanic Non EL .....	32
504 & Non 504 .....	33
Econ. Disadvantaged .....	34

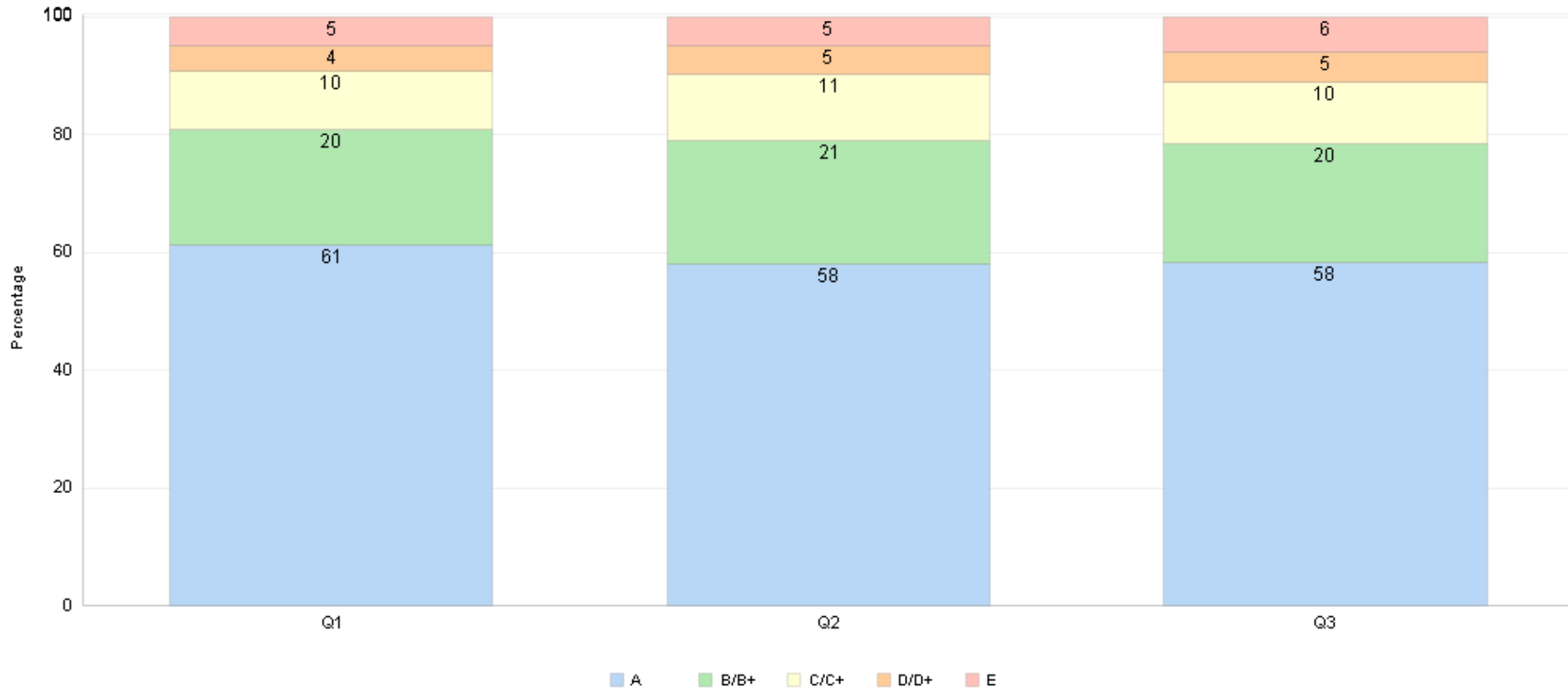
The purpose of this report is to share information about Arlington Public Schools' middle and high school students' quarter grades, disaggregated by the following categories:

- Ethnicity
- Students With Disabilities
- English Learners
- Economically Disadvantaged Students
- Students accessing supports through a 504 plan

The following graphs compare students' quarter grades for school year 2020-2021. The bullets that follow each graph represent the differences between quarter grades.

# **Middle School Grade Distribution**

## Middle School Grade Distribution 2020-2021

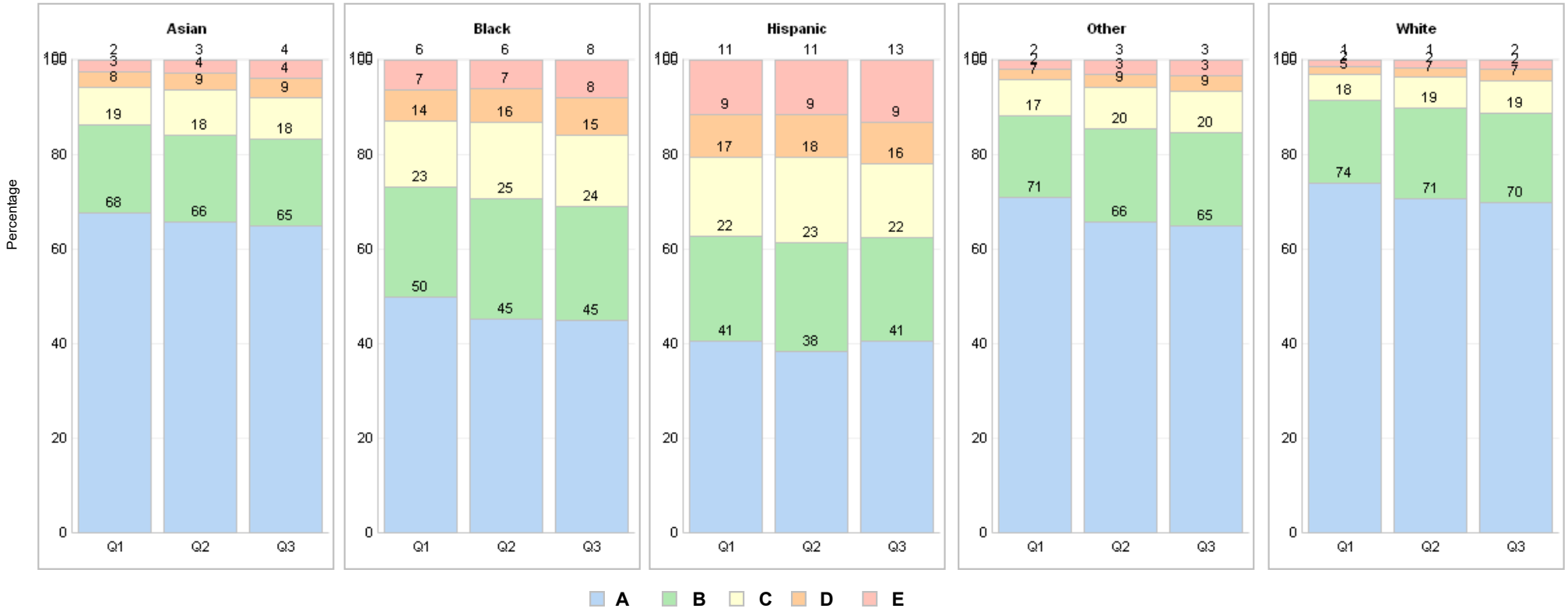


Mark Type - Quarter	Q1					Q2					Q3				
Marks	A	B/B+	C/C+	D/D+	E	A	B/B+	C/C+	D/D+	E	A	B/B+	C/C+	D/D+	E
Middle Total N =	25,058	8,002	4,030	1,814	1,973	23,631	8,548	4,593	1,920	2,017	23,843	8,314	4,282	2,057	2,455

### Change comparison for the quarters of the 2020-2021 school year

Metrics	Middle Total				
Mark Type - Quarter	A	B/B+	C/C+	D/D+	E
Q2	(3.25)▼	1.42▲	1.42▲	0.28▲	0.13▲
Q3	0.17▲	(0.70)▼	(0.83)▼	0.31▲	1.04▲

## Middle School Grade Distribution - Race//Ethnicity 2020-2021



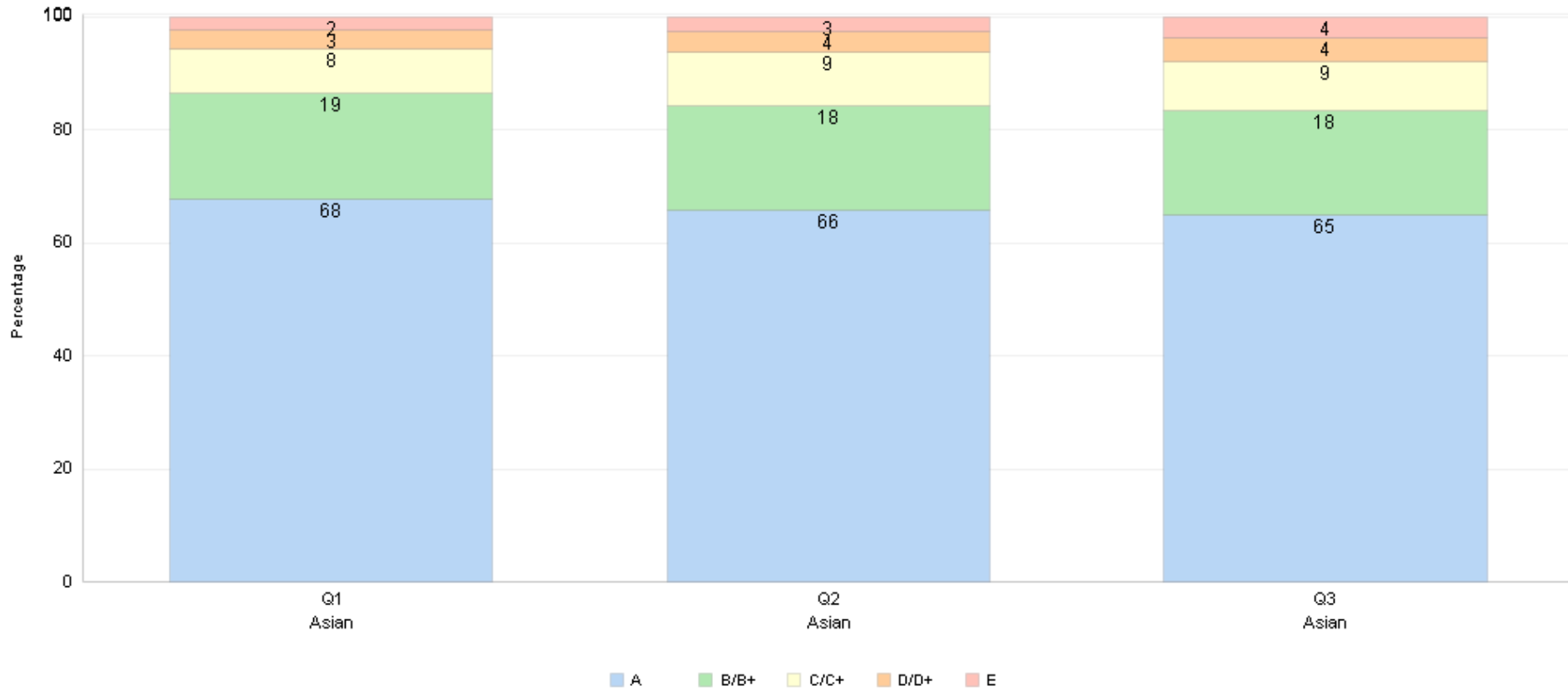
■ A   
 ■ B   
 ■ C   
 ■ D   
 ■ E

Ethnicity (Strategic Plan)	Metrics	# Marks					Total
	Mark Type - Quarter	A	B/B+	C/C+	D/D+	E	
Asian	Q1	2,318	644	267	118	81	3,428
	Q2	2,222	623	318	127	87	3,377
	Q3	2,208	625	292	141	131	3,397
Black	Q1	2,051	959	576	274	254	4,114
	Q2	1,872	1,049	672	293	245	4,131
	Q3	1,883	1,003	632	334	331	4,183
Hispanic	Q1	4,738	2,558	1,947	1,065	1,323	11,631
	Q2	4,456	2,691	2,098	1,061	1,320	11,626
	Q3	4,766	2,566	1,823	1,041	1,532	11,728
Other	Q1	2,251	548	237	74	58	3,168
	Q2	2,091	631	279	88	92	3,181
	Q3	2,076	632	276	104	107	3,195
White	Q1	13,700	3,293	1,003	283	257	18,536
	Q2	12,990	3,554	1,226	351	273	18,394
	Q3	12,910	3,488	1,259	437	354	18,448

### Change comparison for the quarters of the 2020-2021 school year

Ethnicity (Strategic Plan)	Metrics	Change Comparison				
	Mark Type - Quarter	A	B/B+	C/C+	D/D+	E
Asian	Q2	(1.82)▼	(0.34)▼	1.63▲	0.32▲	0.21▲
	Q3	(0.80)▼	(0.05)▼	(0.82)▼	0.39▲	1.28▲
Black	Q2	(4.54)▼	2.08▲	2.27▲	0.43▲	(0.24)▼
	Q3	(0.30)▼	(1.42)▼	(1.16)▼	0.89▲	1.98▲
Hispanic	Q2	(2.41)▼	1.15▲	1.31▲	(0.03)▼	(0.02)▼
	Q3	2.31▲	(1.27)▼	(2.50)▼	(0.25)▼	1.71▲
Other	Q2	(5.32)▼	2.54▲	1.29▲	0.43▲	1.06▲
	Q3	(0.76)▼	(0.06)▼	(0.13)▼	0.49▲	0.46▲
White	Q2	(3.29)▼	1.56▲	1.25▲	0.38▲	0.10▲
	Q3	(0.64)▼	(0.41)▼	0.16▲	0.46▲	0.43▲

## Middle School Grade Distribution - Asian 2020-2021

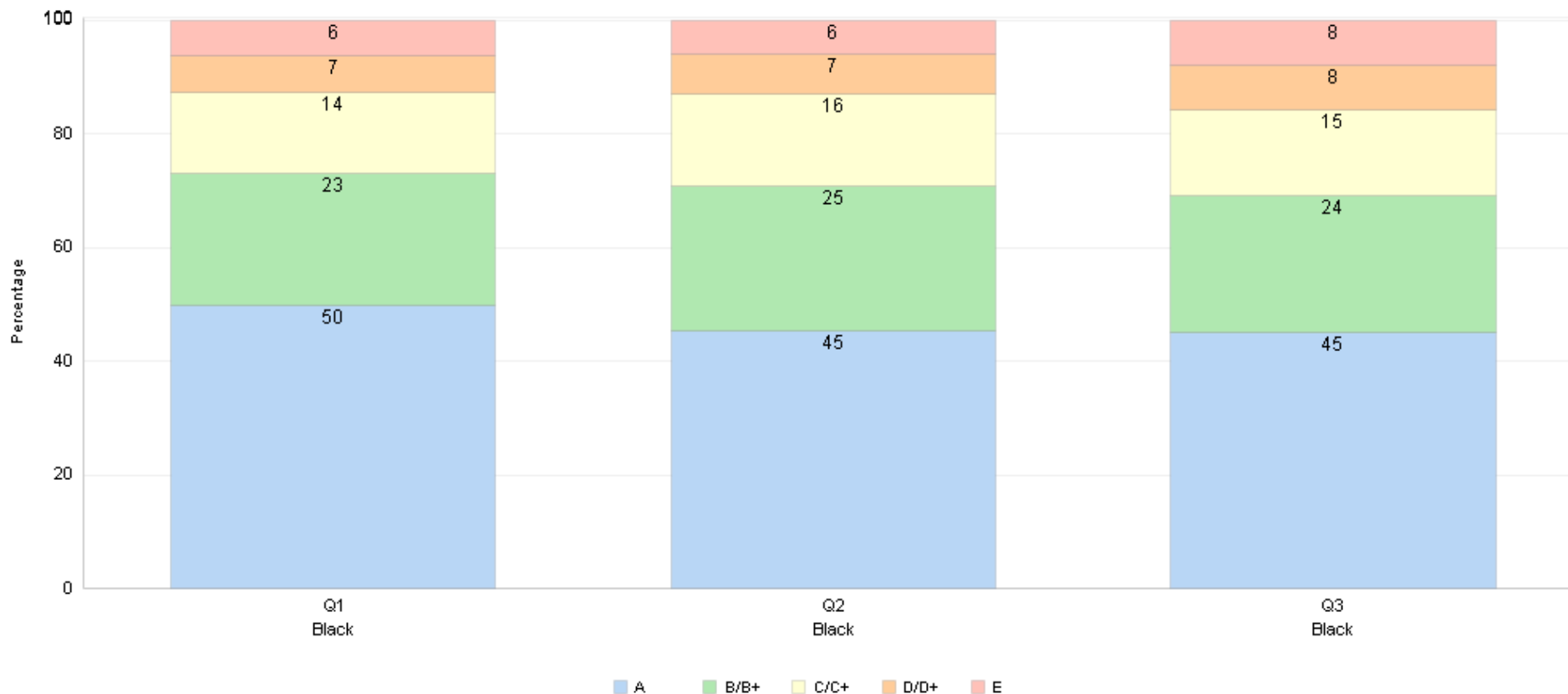


Mark Type - Quarter	Q1					Q2					Q3				
Marks	A	B/B+	C/C+	D/D+	E	A	B/B+	C/C+	D/D+	E	A	B/B+	C/C+	D/D+	E
Asian N =	2,318	644	267	118	81	2,222	623	318	127	87	2,208	625	292	141	131

### Change comparison for the quarters of the 2020-2021 school year

	Asian				
Mark Type - Quarter	A	B/B+	C/C+	D/D+	E
Q2	(1.82)▼	(0.34)▼	1.63 ▲	0.32 ▲	0.21 ▲
Q3	(0.80)▼	(0.05)▼	(0.82)▼	0.39 ▲	1.28 ▲

## Middle School Grade Distribution - Black 2020-2021



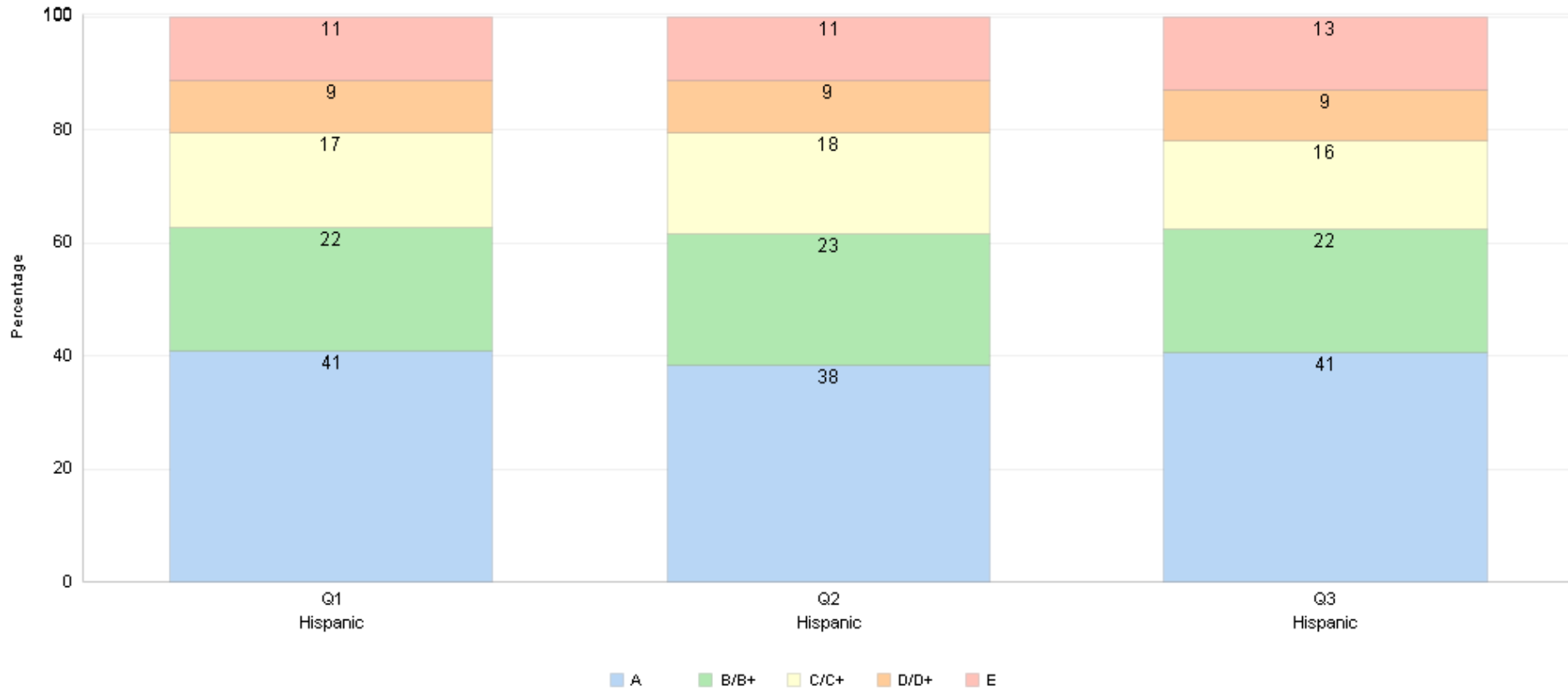
Mark Type - Quarter	Q1					Q2					Q3				
Marks	A	B/B+	C/C+	D/D+	E	A	B/B+	C/C+	D/D+	E	A	B/B+	C/C+	D/D+	E
Black N =	2,051	959	576	274	254	1,872	1,049	672	293	245	1,883	1,003	632	334	331

### Change comparison for the quarters of the 2020-2021 school year

Mark Type - Quarter	Black				
	A	B/B+	C/C+	D/D+	E
Q2	(4.54)▼	2.08 ▲	2.27 ▲	0.43 ▲	(0.24)▼
Q3	(0.30)▼	(1.42)▼	(1.16)▼	0.89 ▲	1.98 ▲



## Middle School Grade Distribution - Hispanic 2020-2021

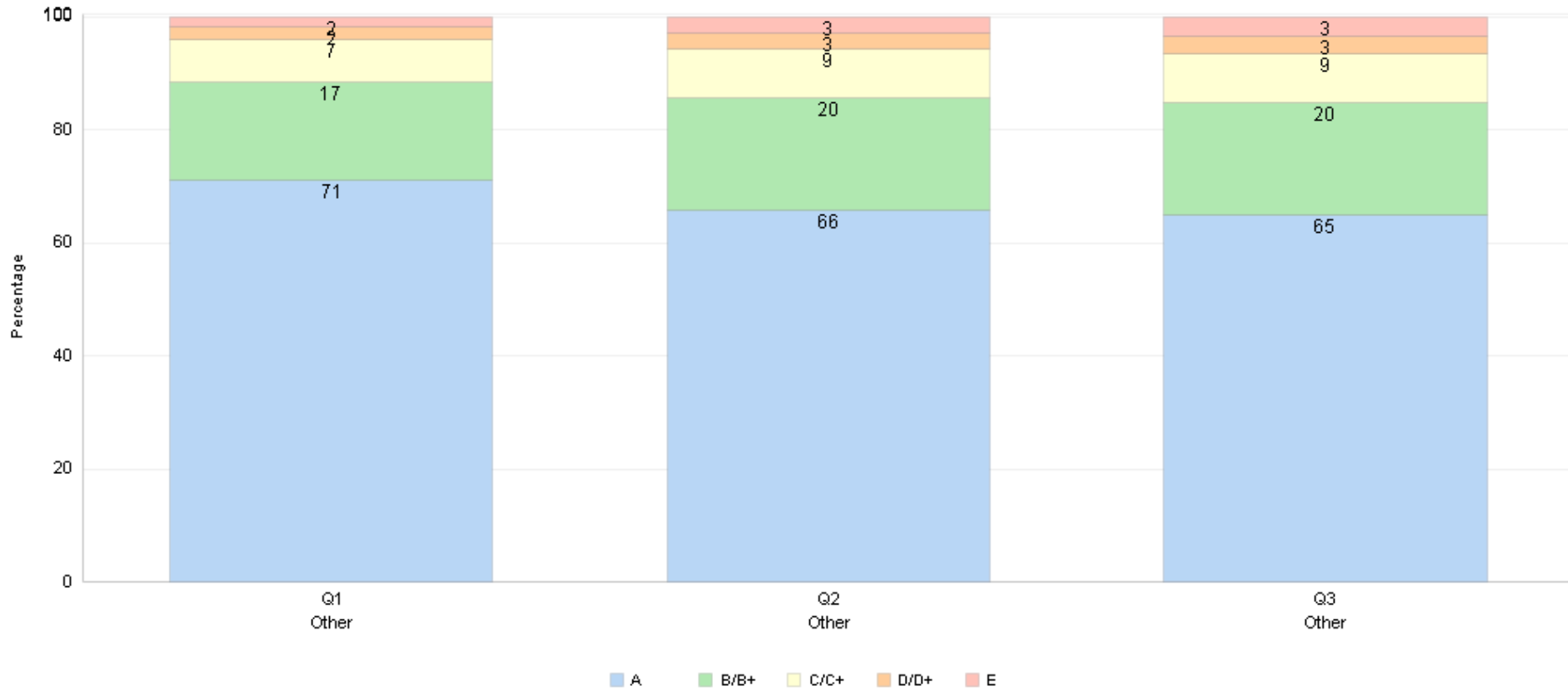


Mark Type - Quarter	Q1					Q2					Q3				
Marks	A	B/B+	C/C+	D/D+	E	A	B/B+	C/C+	D/D+	E	A	B/B+	C/C+	D/D+	E
Hispanic N=	4,738	2,558	1,947	1,065	1,323	4,456	2,691	2,098	1,061	1,320	4,766	2,566	1,823	1,041	1,532

### Change comparison for the quarters of the 2020-2021 school year

	Hispanic				
Mark Type - Quarter	A	B/B+	C/C+	D/D+	E
Q2	(2.41)▼	1.15▲	1.31▲	(0.03)▼	(0.02)▼
Q3	2.31▲	(1.27)▼	(2.50)▼	(0.25)▼	1.71▲

## Middle School Grade Distribution - Other 2020-2021

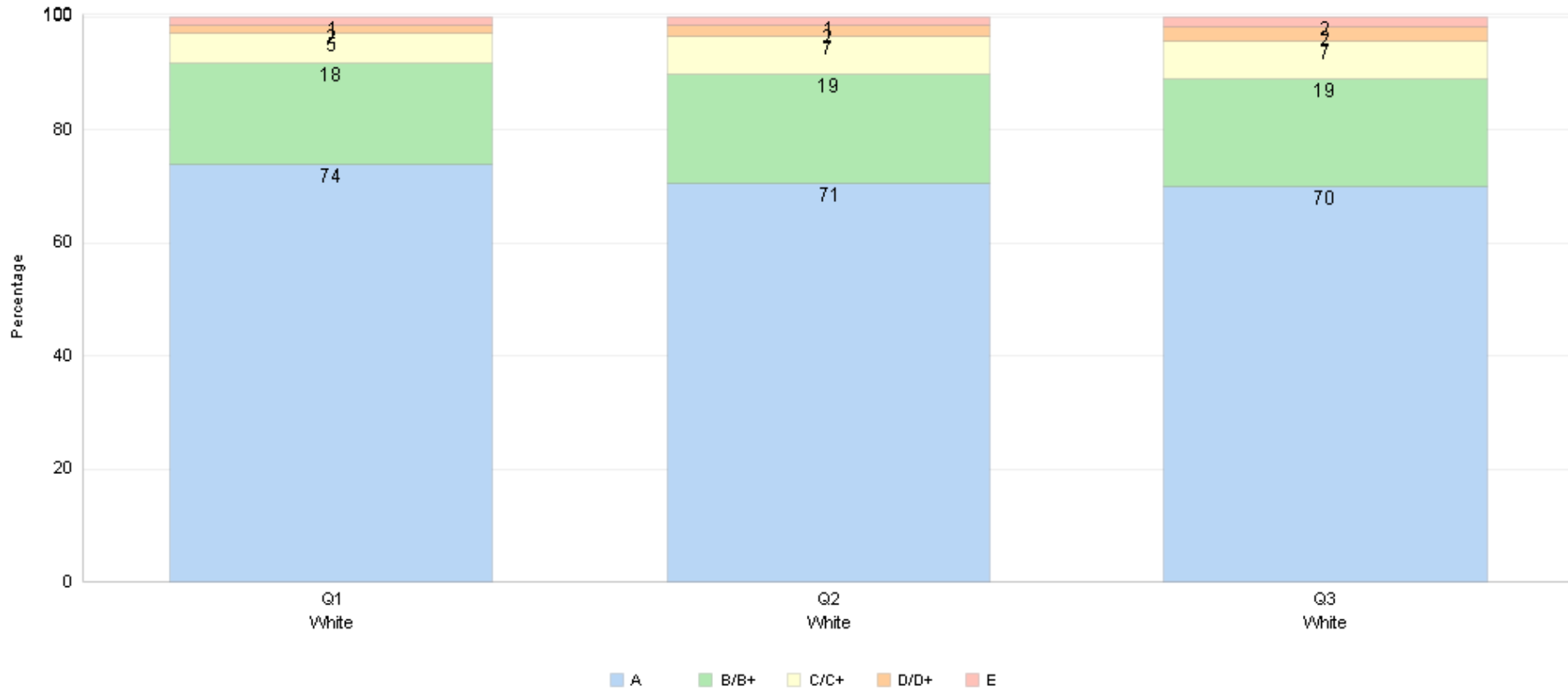


Mark Type - Quarter	Q1					Q2					Q3				
Marks	A	B/B+	C/C+	D/D+	E	A	B/B+	C/C+	D/D+	E	A	B/B+	C/C+	D/D+	E
Other N =	2,251	548	237	74	58	2,091	631	279	88	92	2,076	632	276	104	107

### Change comparison for the quarters of the 2020-2021 school year

	Other				
Mark Type - Quarter	A	B/B+	C/C+	D/D+	E
Q2	(5.32)▼	2.54▲	1.29▲	0.43▲	1.06▲
Q3	(0.76)▼	(0.06)▼	(0.13)▼	0.49▲	0.46▲

## Middle School Grade Distribution - White 2020-2021

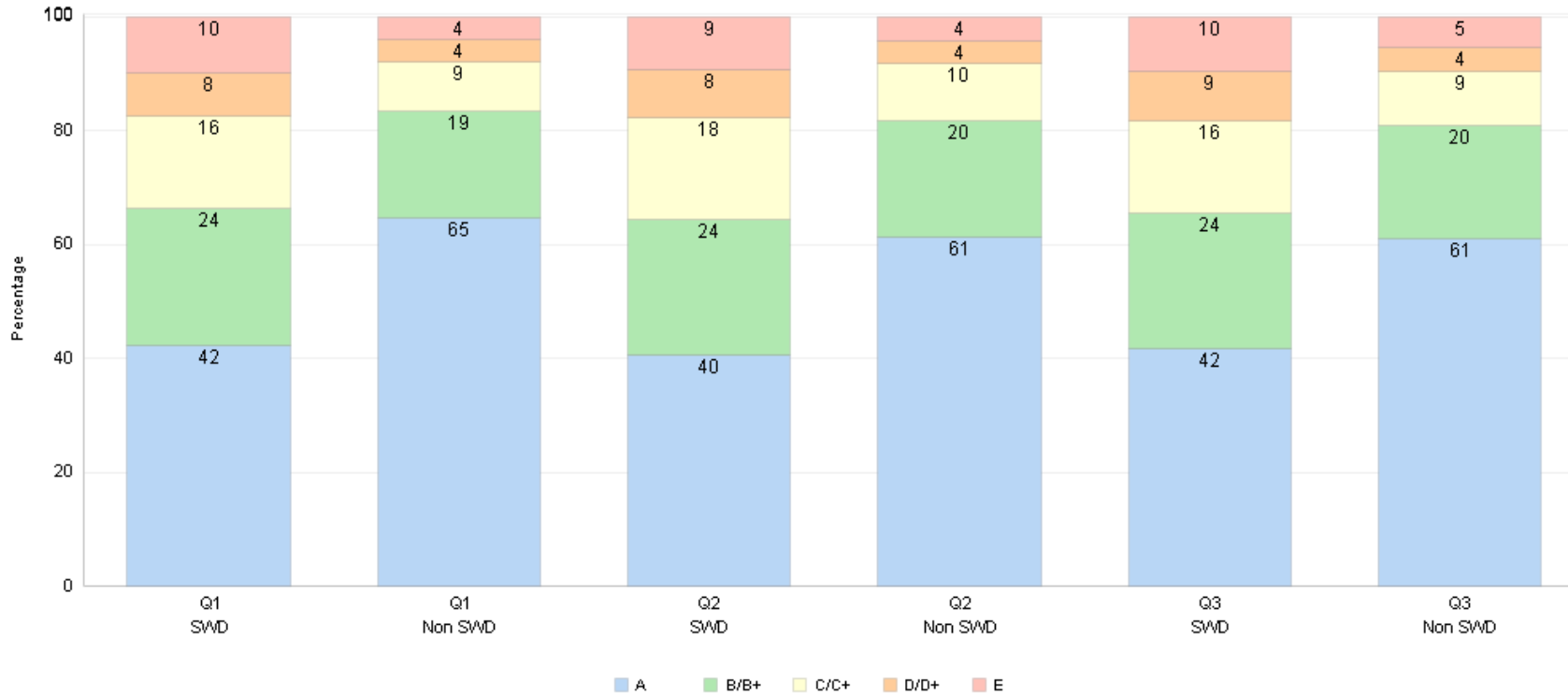


Mark Type - Quarter	Q1					Q2					Q3				
Marks	A	B/B+	C/C+	D/D+	E	A	B/B+	C/C+	D/D+	E	A	B/B+	C/C+	D/D+	E
White N =	13,700	3,293	1,003	283	257	12,990	3,554	1,226	351	273	12,910	3,488	1,259	437	354

### Change comparison for the quarters of the 2020-2021 school year

Mark Type - Quarter	White				
	A	B/B+	C/C+	D/D+	E
Q2	(3.29) ▼	1.56 ▲	1.25 ▲	0.38 ▲	0.10 ▲
Q3	(0.64) ▼	(0.41) ▼	0.16 ▲	0.46 ▲	0.43 ▲

## Middle School Grade Distribution - SWD & Non-SWD 2020-2021



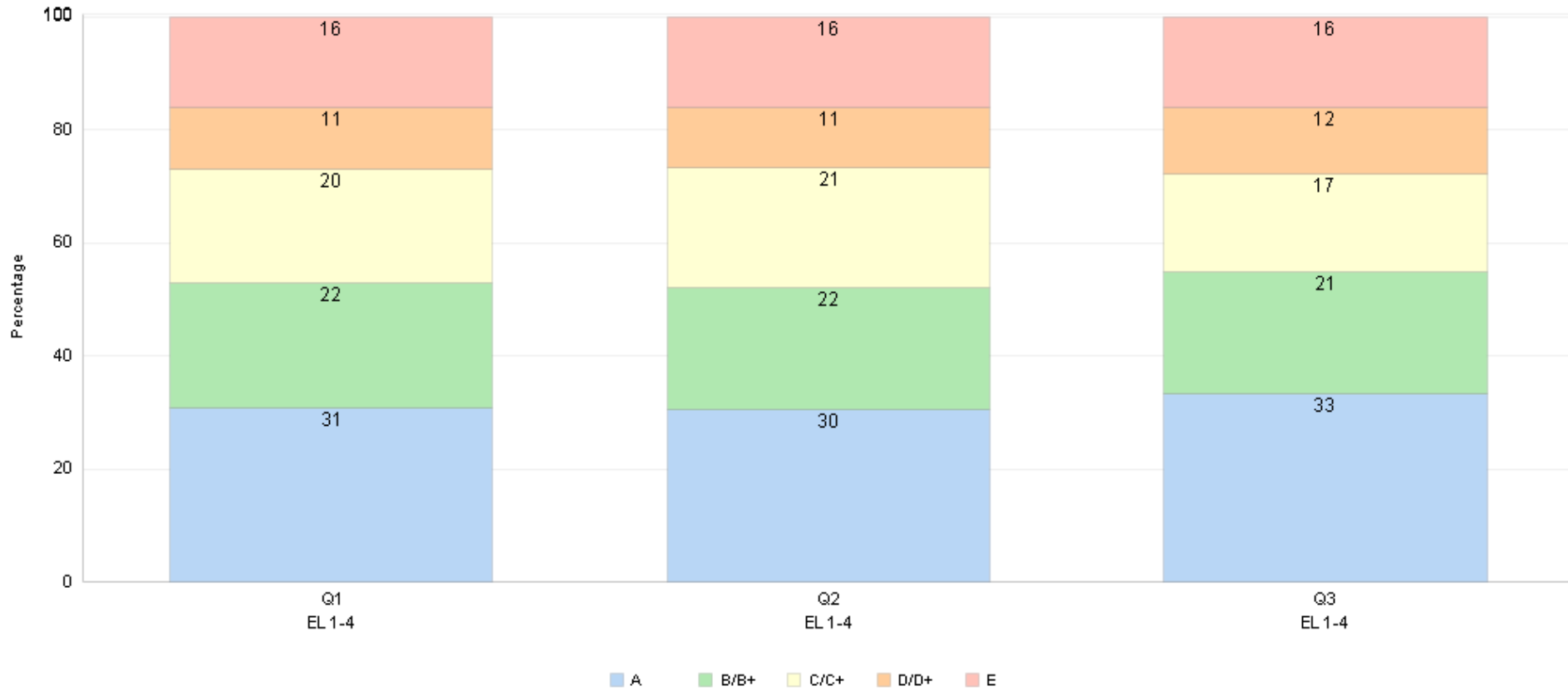
Mark Type - Quarter	Q1					Q2					Q3				
Marks	A	B/B+	C/C+	D/D+	E	A	B/B+	C/C+	D/D+	E	A	B/B+	C/C+	D/D+	E
SWD N =	2,572	1,443	985	472	593	2,468	1,458	1,089	515	569	2,579	1,450	1,006	536	594
Non SWD N =	22,486	6,559	3,045	1,342	1,380	21,163	7,090	3,504	1,405	1,448	21,264	6,864	3,276	1,521	1,861
Middle Total N =	25,058	8,002	4,030	1,814	1,973	23,631	8,548	4,593	1,920	2,017	23,843	8,314	4,282	2,057	2,455

### Change comparison for the quarters of the 2020-2021 school year

Mark Type - Quarter	SWD				
	A	B/B+	C/C+	D/D+	E
Q2	(1.94) ▼	0.11 ▲	1.61 ▲	0.66 ▲	(0.45) ▼
Q3	1.37 ▲	(0.39) ▼	(1.54) ▼	0.25 ▲	0.31 ▲

Mark Type - Quarter	Non SWD				
	A	B/B+	C/C+	D/D+	E
Q2	(3.45) ▼	1.64 ▲	1.38 ▲	0.20 ▲	0.22 ▲
Q3	(0.02) ▼	(0.75) ▼	(0.71) ▼	0.31 ▲	1.17 ▲

## Middle School Grade Distribution - EL 1-4 2020-2021

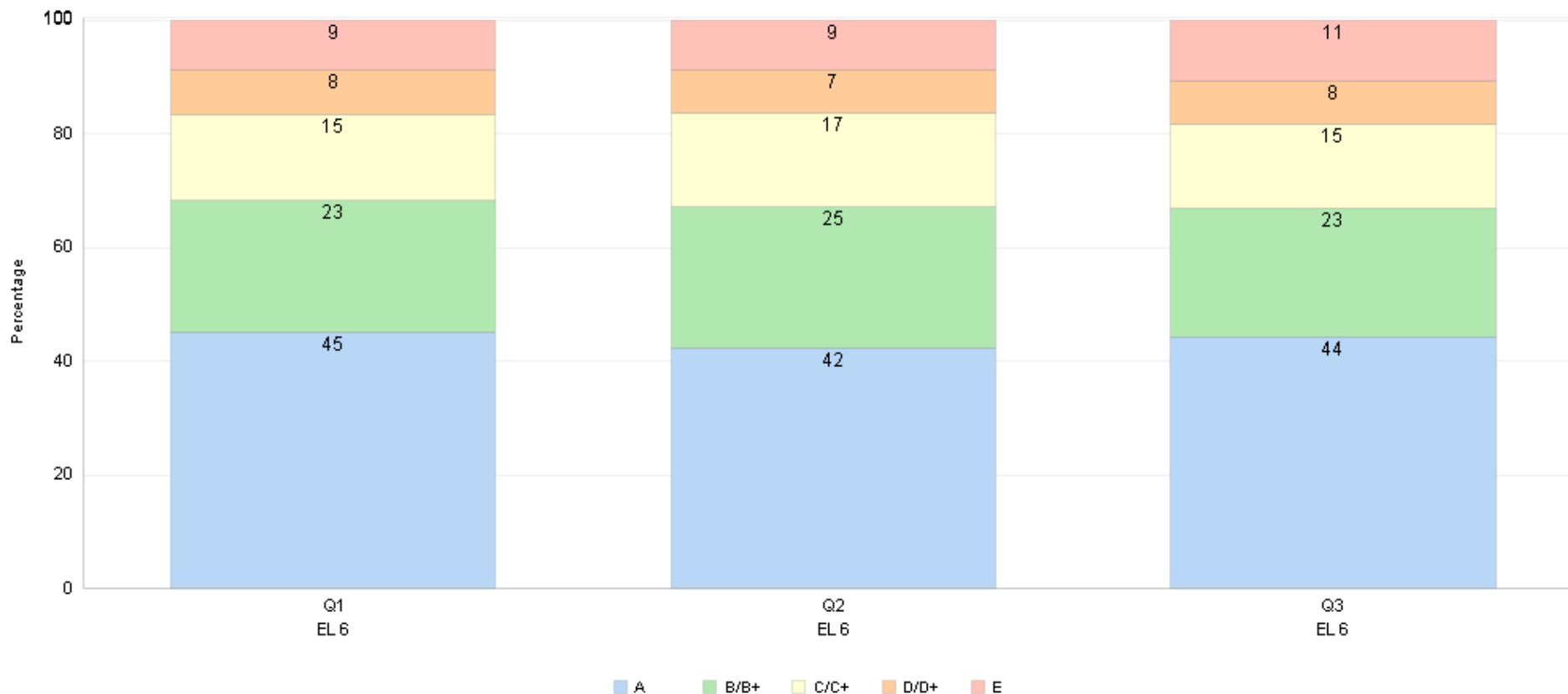


Mark Type - Quarter	Q1					Q2					Q3				
Marks	A	B/B+	C/C+	D/D+	E	A	B/B+	C/C+	D/D+	E	A	B/B+	C/C+	D/D+	E
EL 1-4 N =	1,331	949	863	471	689	1,311	929	915	458	690	1,466	946	771	519	706

### Change comparison for the quarters of the 2020-2021 school year

Mark Type - Quarter	EL 1-4				
	A	B/B+	C/C+	D/D+	E
Q2	(0.46)▼	(0.46)▼	1.21▲	(0.30)▼	0.02▲
Q3	2.79▲	(0.13)▼	(3.77)▼	1.13▲	(0.02)▼

## Middle School Grade Distribution - EL 6 2020-2021

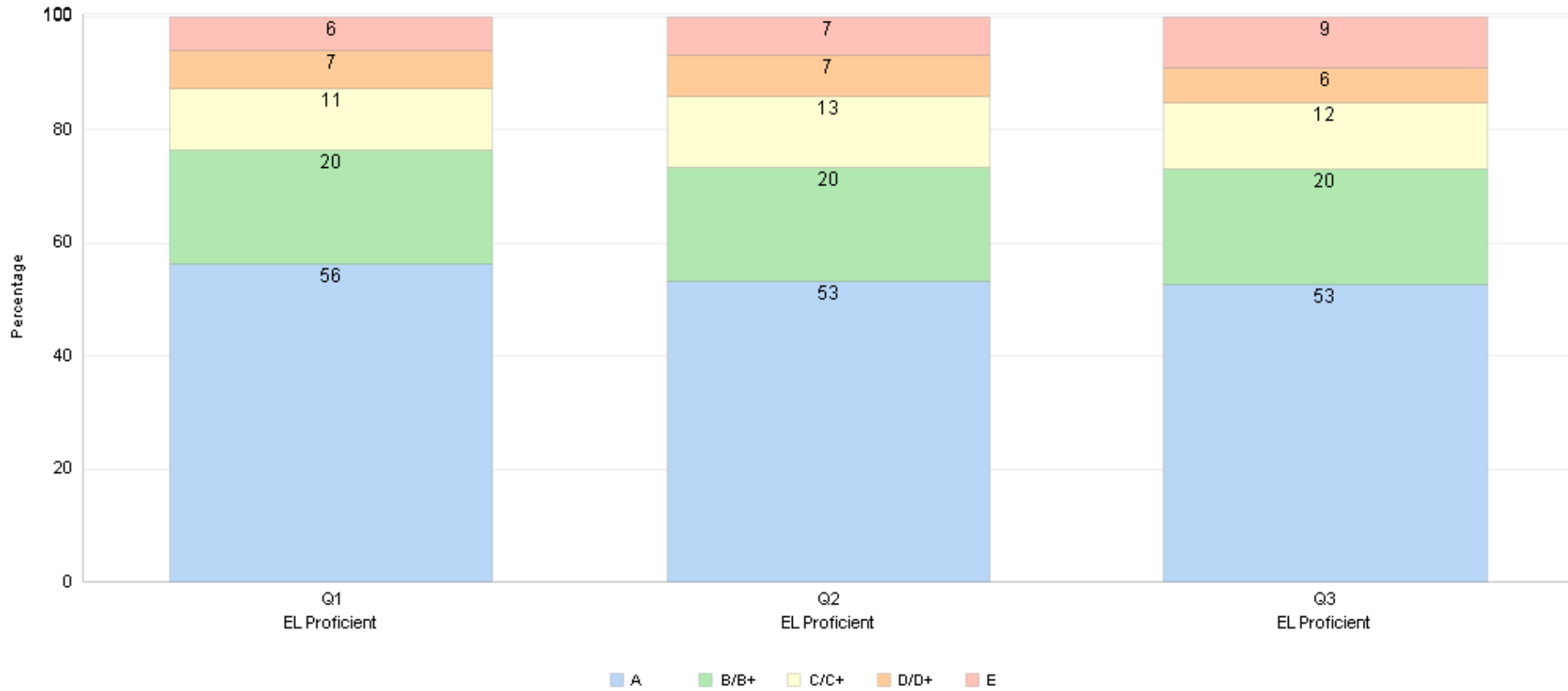


Mark Type - Quarter	Q1					Q2					Q3				
Marks	A	B/B+	C/C+	D/D+	E	A	B/B+	C/C+	D/D+	E	A	B/B+	C/C+	D/D+	E
EL 6 N =	2,657	1,362	893	457	513	2,453	1,444	959	431	509	2,582	1,313	866	448	623

### Change comparison for the quarters of the 2020-2021 school year

Mark Type - Quarter	EL 6				
	A	B/B+	C/C+	D/D+	E
Q2	(2.85)▼	1.76▲	1.36▲	(0.33)▼	0.06▲
Q3	1.95▲	(2.40)▼	(1.70)▼	0.25▲	1.90▲

## Middle School Grade Distribution - EL Proficient 2020-2021

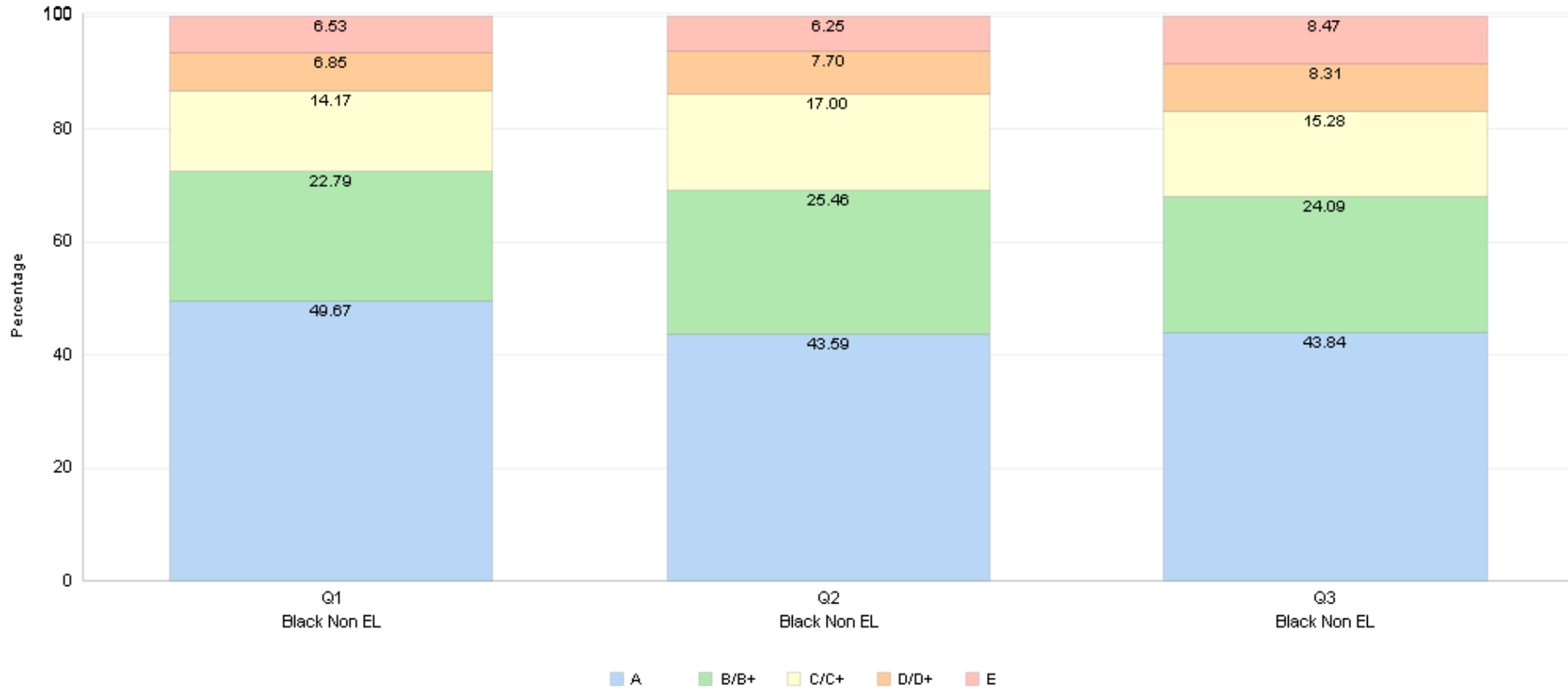


Mark Type - Quarter	Q1					Q2					Q3				
Marks	A	B/B+	C/C+	D/D+	E	A	B/B+	C/C+	D/D+	E	A	B/B+	C/C+	D/D+	E
EL Proficient N =	1,519	546	299	182	161	1,443	546	346	194	187	1,420	553	314	168	243

### Change comparison for the quarters of the 2020-2021 school year

Mark Type - Quarter	EL Proficient				
	A	B/B+	C/C+	D/D+	E
Q2	(2.98)▼	(0.07)▼	1.69▲	0.42▲	0.94▲
Q3	(0.50)▼	0.39▲	(1.10)▼	(0.92)▼	2.12▲

## Middle School Grade Distribution - Black Non-EL 2020-2021



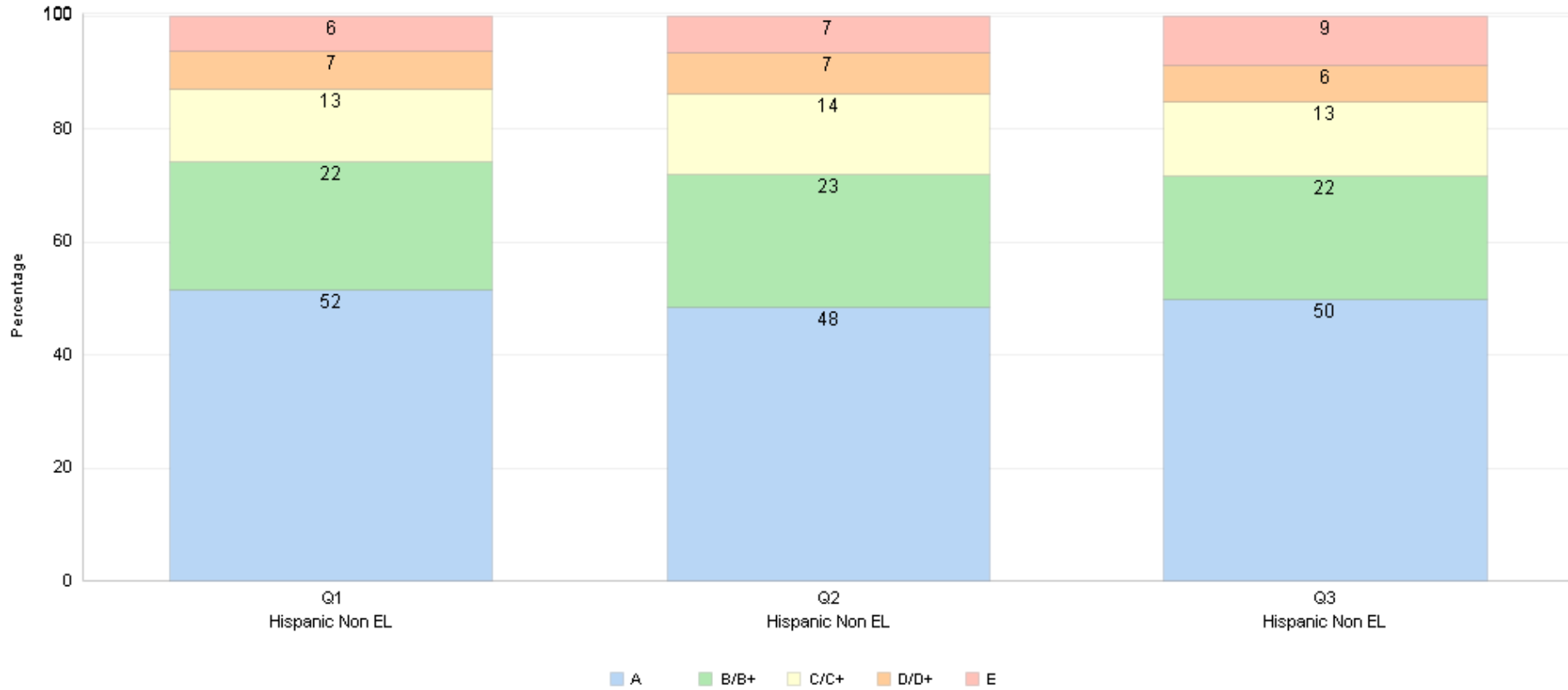
Mark Type - Quarter	Q1					Q2					Q3				
Marks	A	B/B+	C/C+	D/D+	E	A	B/B+	C/C+	D/D+	E	A	B/B+	C/C+	D/D+	E
Black Non EL N =	1,567	719	447	216	206	1,387	810	541	245	199	1,403	771	489	266	271

### Change comparison for the quarters of the 2020-2021 school year

	Black Non EL				
Mark Type - Quarter	A	B/B+	C/C+	D/D+	E
Q2	(6.08)▼	2.67▲	2.83▲	0.85▲	(0.28)▼
Q3	0.25▲	(1.36)▼	(1.72)▼	0.61▲	2.21▲



## Middle School Grade Distribution - Hispanic Non-EL 2020-2021

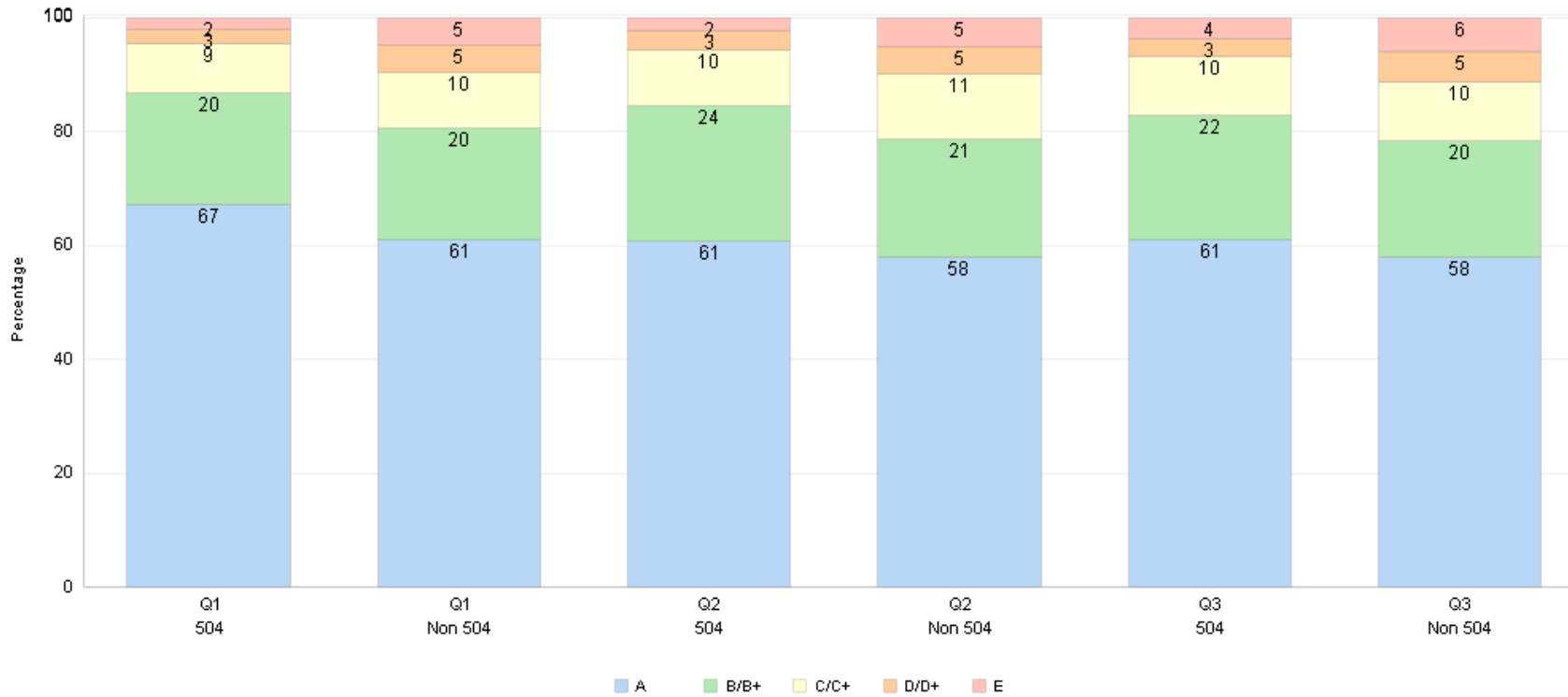


Mark Type - Quarter	Q1					Q2					Q3				
Marks	A	B/B+	C/C+	D/D+	E	A	B/B+	C/C+	D/D+	E	A	B/B+	C/C+	D/D+	E
Hispanic Non EL N =	2,526	1,098	637	329	302	2,340	1,133	686	353	315	2,391	1,044	628	310	420

### Change comparison for the quarters of the 2020-2021 school year

Mark Type - Quarter	Hispanic Non EL				
	A	B/B+	C/C+	D/D+	E
Q2	(3.16)▼	1.03▲	1.19▲	0.59▲	0.35▲
Q3	1.41▲	(1.69)▼	(1.11)▼	(0.85)▼	2.24▲

## Middle School Grade Distribution - 504 & Non-504 2020-2021



Mark Type - Quarter	Q1					Q2					Q3				
Marks	A	B/B+	C/C+	D/D+	E	A	B/B+	C/C+	D/D+	E	A	B/B+	C/C+	D/D+	E
504 N =	1,471	428	194	56	43	1,332	519	220	72	51	1,346	479	224	73	80
Non 504 N =	23,587	7,574	3,836	1,758	1,930	22,299	8,029	4,373	1,848	1,966	22,497	7,835	4,058	1,984	2,375

### Change comparison for the quarters of the 2020-2021 school year

Mark Type - Quarter	504				
	A	B/B+	C/C+	D/D+	E
Q2	(6.40) ▼	4.13 ▲	1.18 ▲	0.73 ▲	0.36 ▲
Q3	0.42 ▲	(1.90) ▼	0.15 ▲	0.03 ▲	1.31 ▲

Mark Type - Quarter	Non 504				
	A	B/B+	C/C+	D/D+	E
Q2	(3.08) ▼	1.27 ▲	1.44 ▲	0.25 ▲	0.12 ▲
Q3	0.16 ▲	(0.63) ▼	(0.88) ▼	0.32 ▲	1.02 ▲

## Middle School Grade Distribution - Econ. Disadv. & Non-Econ Disadv. 2020-2021



Mark Type - Quarter	Q1					Q2					Q3				
Marks	A	B/B+	C/C+	D/D+	E	A	B/B+	C/C+	D/D+	E	A	B/B+	C/C+	D/D+	E
Econ. Disadvantaged N =	4,100	2,329	1,823	1,000	1,228	3,758	2,423	1,944	1,016	1,257	3,995	2,341	1,693	1,005	1,470
Non Econ. Disadvantaged N =	20,958	5,673	2,207	814	745	19,873	6,125	2,649	904	760	19,848	5,973	2,589	1,052	985

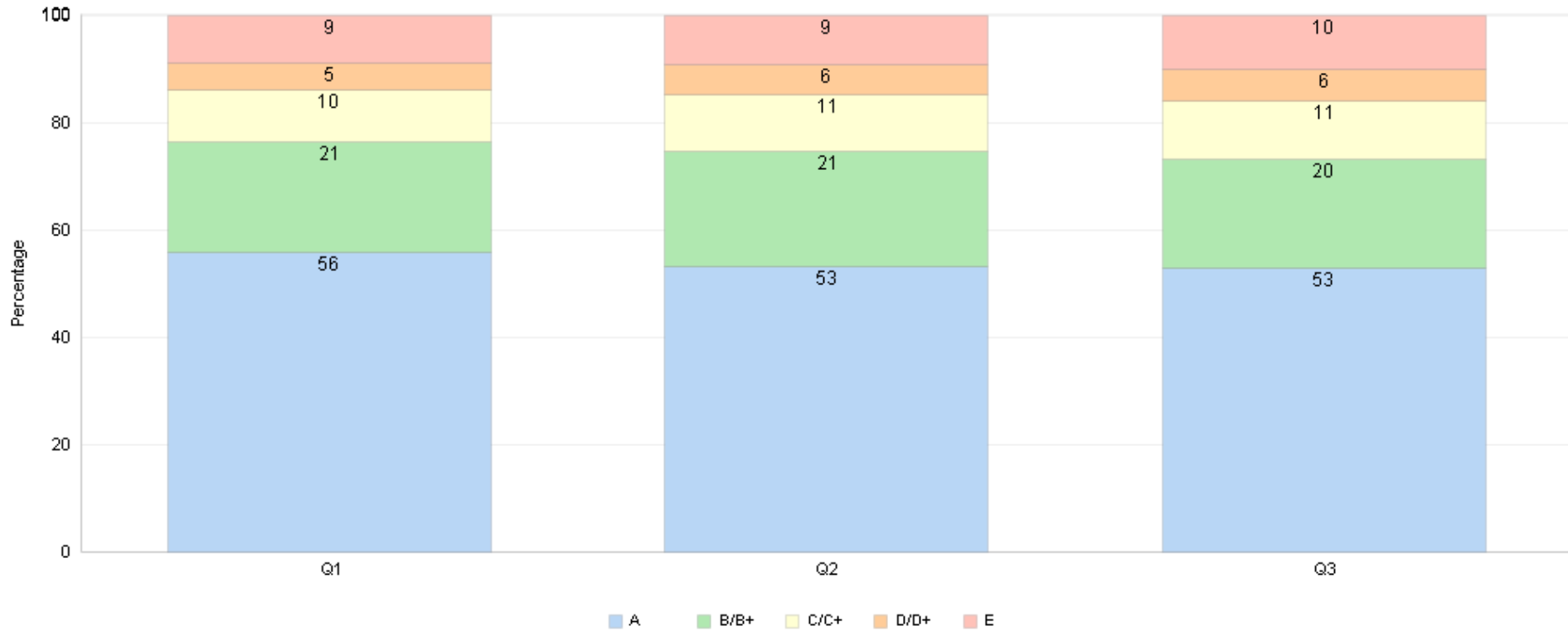
### Change comparison for the quarters of the 2020-2021 school year

	Econ. Disadvantaged				
Mark Type - Quarter	A	B/B+	C/C+	D/D+	E
Q2	(2.98)▼	1.08▲	1.30▲	0.23▲	0.37▲
Q3	1.89▲	(1.02)▼	(2.58)▼	(0.20)▼	1.91▲

	Non Econ. Disadvantaged				
Mark Type - Quarter	A	B/B+	C/C+	D/D+	E
Q2	(3.38)▼	1.54▲	1.48▲	0.30▲	0.06▲
Q3	(0.37)▼	(0.59)▼	(0.24)▼	0.47▲	0.73▲

# **High School Grade Distribution**

## High School Grade Distribution 2020-2021

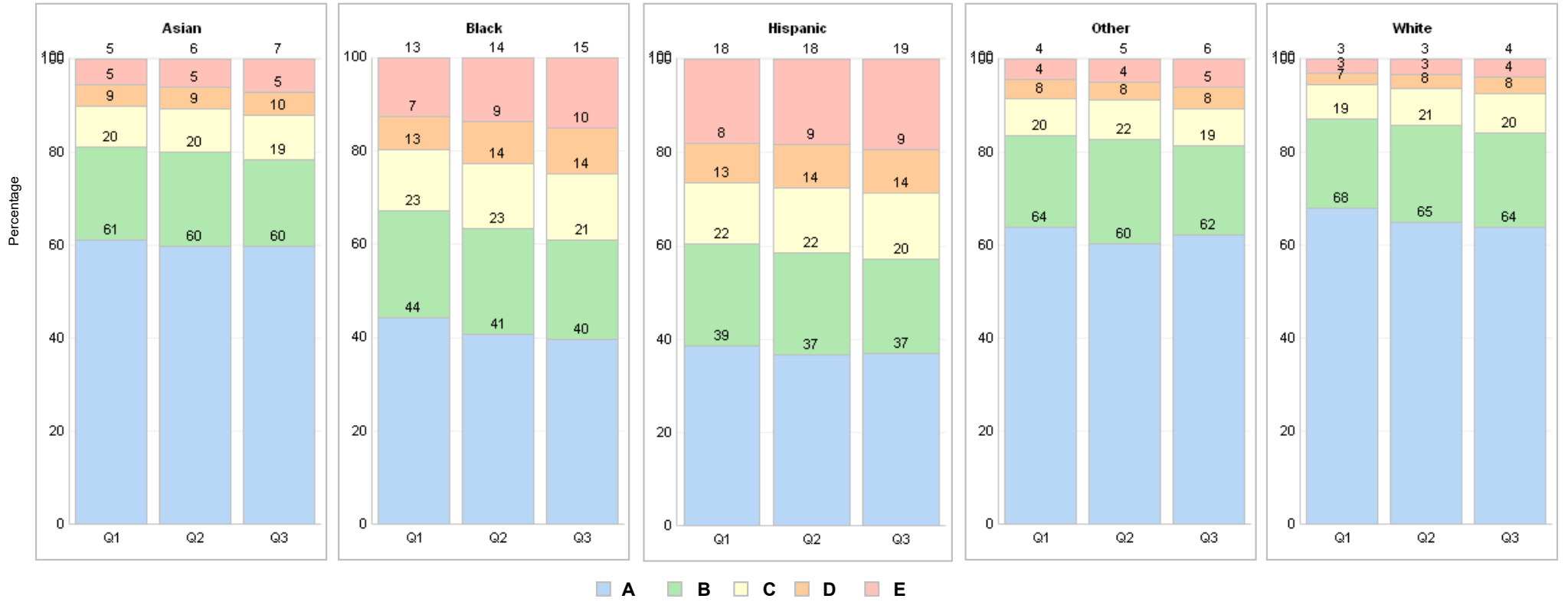


Mark Type - Quarter	Q1					Q2					Q3				
Marks	A	B/B+	C/C+	D/D+	E	A	B/B+	C/C+	D/D+	E	A	B/B+	C/C+	D/D+	E
High Total N =	27,678	10,121	4,778	2,469	4,282	26,136	10,432	5,140	2,799	4,384	25,533	9,726	5,171	2,878	4,767

### Change comparison for the quarters of the 2020-2021 school year

	High Total				
Mark Type - Quarter	A	B/B+	C/C+	D/D+	E
Q2	(2.65)▼	0.82▲	0.83▲	0.72▲	0.29▲
Q3	(0.35)▼	(1.11)▼	0.24▲	0.26▲	0.95▲

## High School Grade Distribution - Race//Ethnicity 2020-2021



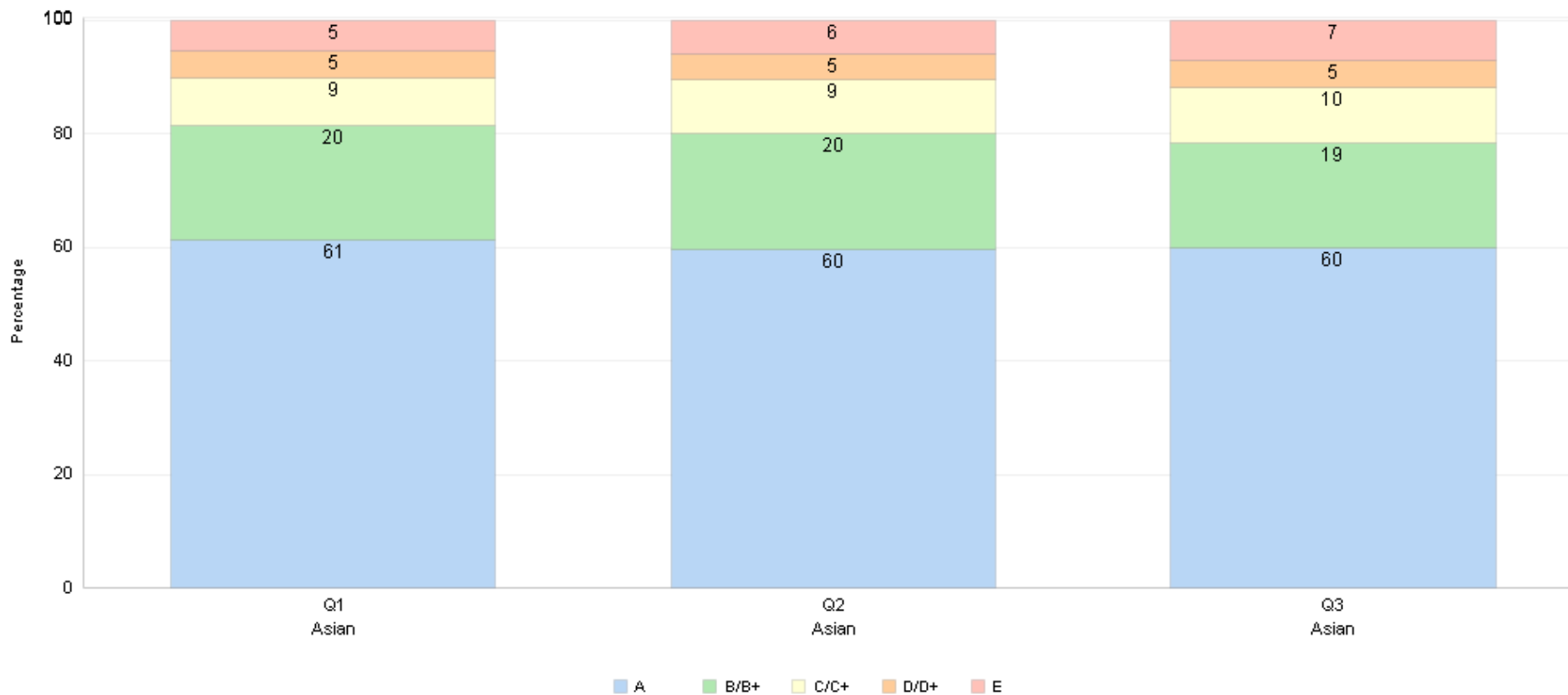
■ A   
 ■ B   
 ■ C   
 ■ D   
 ■ E

Ethnicity (Strategic Plan)	Metrics	# Marks				
	Mark Type - Quarter	A	B/B+	C/C+	D/D+	E
Asian	Q1	2,324	759	328	177	205
	Q2	2,256	771	353	179	222
	Q3	2,232	692	361	179	267
Black	Q1	2,244	1,167	660	368	635
	Q2	2,052	1,137	702	443	696
	Q3	1,977	1,060	705	480	757
Hispanic	Q1	5,589	3,157	1,879	1,210	2,618
	Q2	5,233	3,131	1,987	1,351	2,603
	Q3	5,152	2,844	1,976	1,285	2,716
Other	Q1	2,184	670	270	140	149
	Q2	2,044	758	281	135	164
	Q3	2,081	639	272	152	199
White	Q1	15,337	4,368	1,641	574	675
	Q2	14,551	4,635	1,817	691	699
	Q3	14,091	4,491	1,857	782	828

### Change comparison for the quarters of the 2020-2021 school year

Ethnicity (Strategic Plan)	Metrics	Change Comparison				
	Mark Type - Quarter	A	B/B+	C/C+	D/D+	E
Asian	Q2	(1.60)▼	0.38▲	0.69▲	0.07▲	0.47▲
	Q3	0.16▲	(1.84)▼	0.34▲	0.06▲	1.28▲
Black	Q2	(3.43)▼	(0.40)▼	0.95▲	1.55▲	1.32▲
	Q3	(1.09)▼	(1.31)▼	0.20▲	0.83▲	1.37▲
Hispanic	Q2	(2.09)▼	0.04▲	0.89▲	1.07▲	0.08▲
	Q3	0.29▲	(1.53)▼	0.25▲	(0.25)▼	1.24▲
Other	Q2	(3.55)▼	2.78▲	0.40▲	(0.11)▼	0.48▲
	Q3	1.81▲	(3.30)▼	(0.17)▼	0.56▲	1.10▲
White	Q2	(2.90)▼	1.37▲	0.85▲	0.55▲	0.13▲
	Q3	(1.07)▼	(0.33)▼	0.31▲	0.46▲	0.63▲

## High School Grade Distribution - Asian 2020-2021

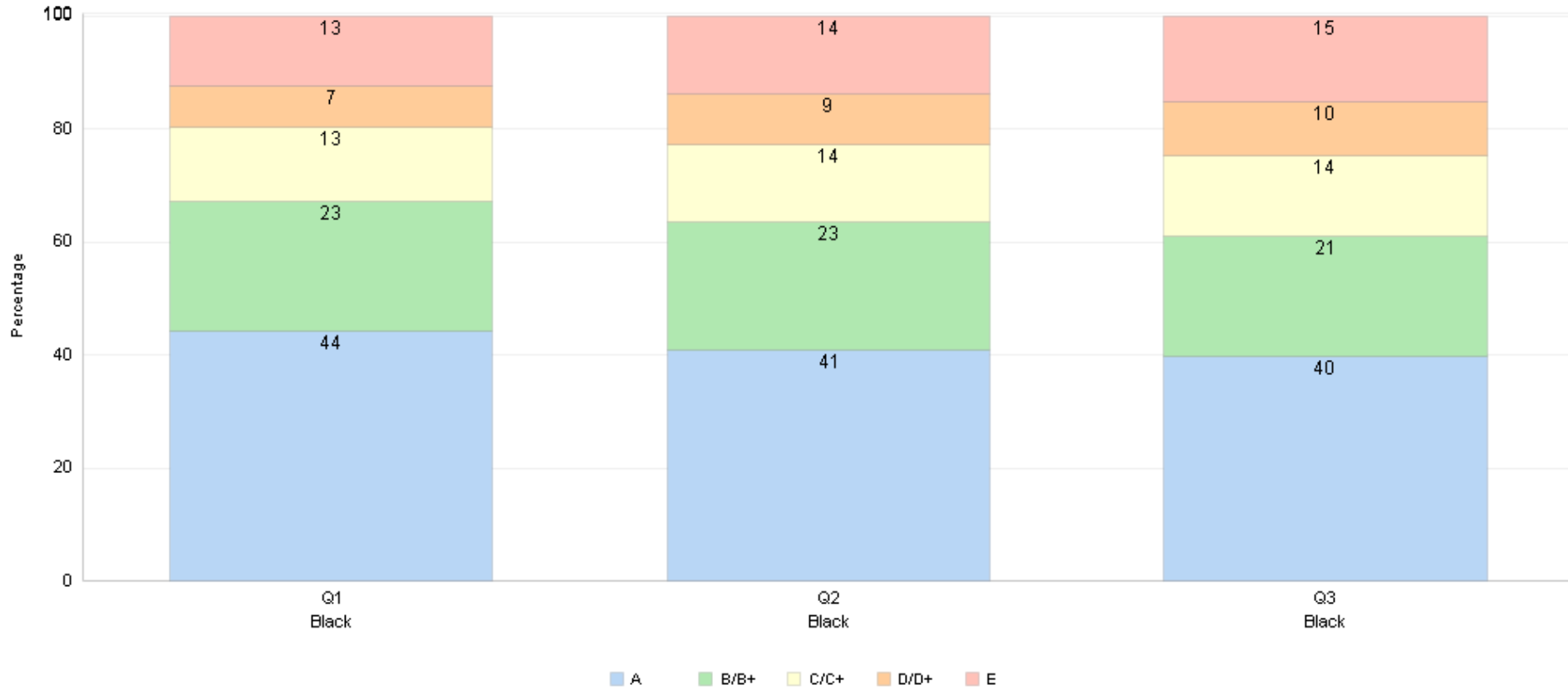


Mark Type - Quarter	Q1					Q2					Q3				
	A	B/B+	C/C+	D/D+	E	A	B/B+	C/C+	D/D+	E	A	B/B+	C/C+	D/D+	E
Asian N =	2,324	759	328	177	205	2,256	771	353	179	222	2,232	692	361	179	267

### Change comparison for the quarters of the 2020-2021 school year

Mark Type - Quarter	Asian				
	A	B/B+	C/C+	D/D+	E
Q2	(1.60) ▼	0.38 ▲	0.69 ▲	0.07 ▲	0.47 ▲
Q3	0.16 ▲	(1.84) ▼	0.34 ▲	0.06 ▲	1.28 ▲

## High School Grade Distribution - Black 2020-2021



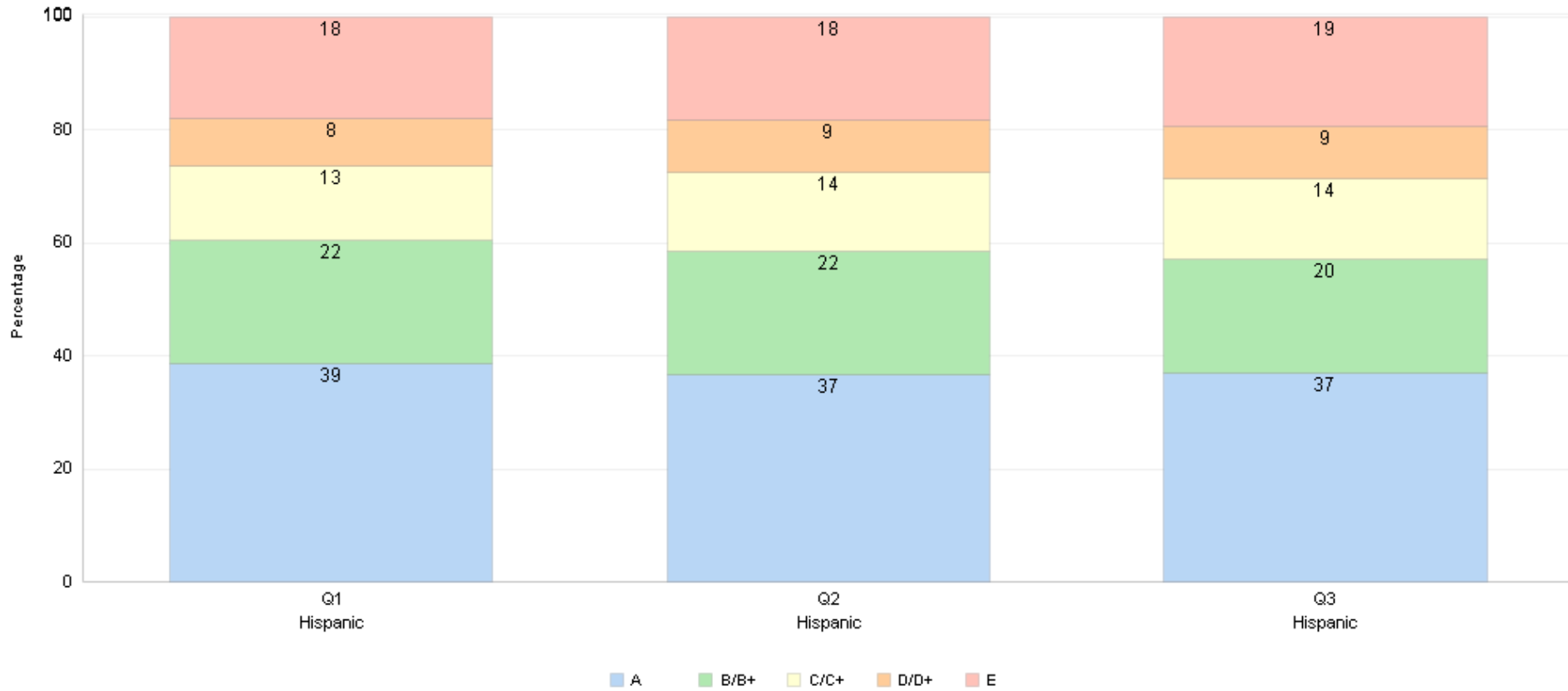
Mark Type - Quarter	Q1					Q2					Q3				
Marks	A	B/B+	C/C+	D/D+	E	A	B/B+	C/C+	D/D+	E	A	B/B+	C/C+	D/D+	E
Black N =	2,244	1,167	660	368	635	2,052	1,137	702	443	696	1,977	1,060	705	480	757

### Change comparison for the quarters of the 2020-2021 school year

	Black				
Mark Type - Quarter	A	B/B+	C/C+	D/D+	E
Q2	(3.43)▼	(0.40)▼	0.95▲	1.55▲	1.32▲
Q3	(1.09)▼	(1.31)▼	0.20▲	0.83▲	1.37▲



## High School Grade Distribution - Hispanic 2020-2021

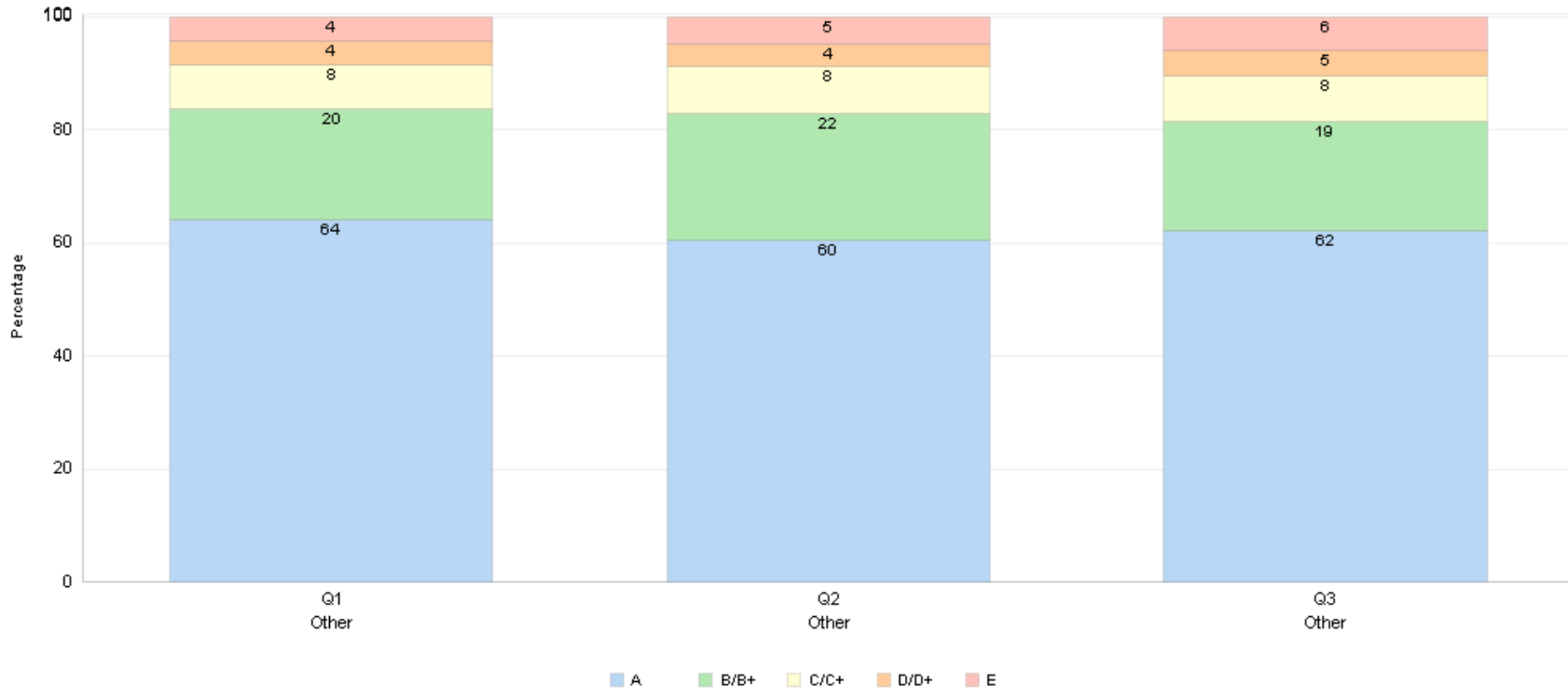


Mark Type - Quarter	Q1					Q2					Q3				
Marks	A	B/B+	C/C+	D/D+	E	A	B/B+	C/C+	D/D+	E	A	B/B+	C/C+	D/D+	E
Hispanic N=	5,589	3,157	1,879	1,210	2,618	5,233	3,131	1,987	1,351	2,603	5,152	2,844	1,976	1,285	2,716

### Change comparison for the quarters of the 2020-2021 school year

Mark Type - Quarter	Hispanic				
	A	B/B+	C/C+	D/D+	E
Q2	(2.09)▼	0.04▲	0.89▲	1.07▲	0.08▲
Q3	0.29▲	(1.53)▼	0.25▲	(0.25)▼	1.24▲

## High School Grade Distribution - Other 2020-2021

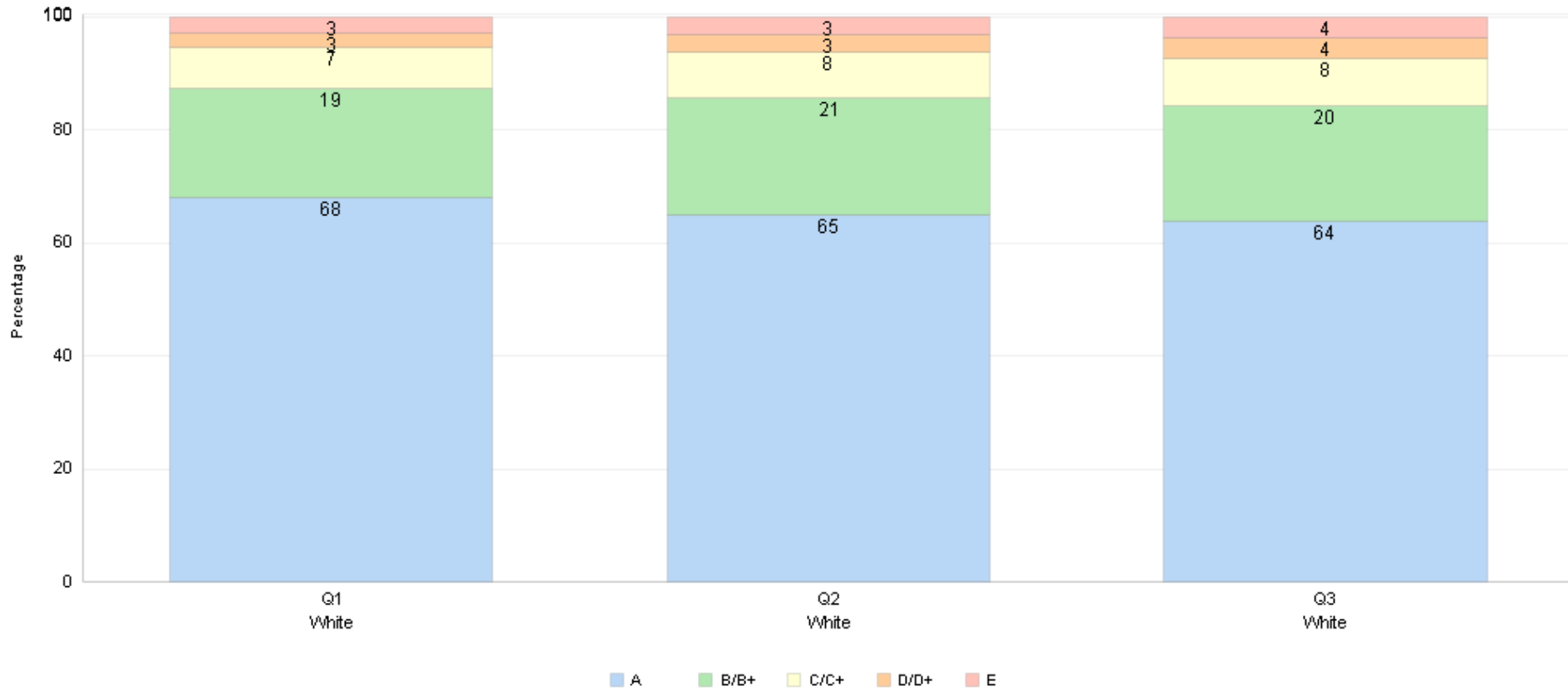


Mark Type - Quarter	Q1					Q2					Q3				
Marks	A	B/B+	C/C+	D/D+	E	A	B/B+	C/C+	D/D+	E	A	B/B+	C/C+	D/D+	E
Other N =	2,184	670	270	140	149	2,044	758	281	135	164	2,081	639	272	152	199

### Change comparison for the quarters of the 2020-2021 school year

Mark Type - Quarter	Other				
	A	B/B+	C/C+	D/D+	E
Q2	(3.55)▼	2.78 ▲	0.40 ▲	(0.11)▼	0.48 ▲
Q3	1.81 ▲	(3.30)▼	(0.17)▼	0.56 ▲	1.10 ▲

## High School Grade Distribution - White 2020-2021

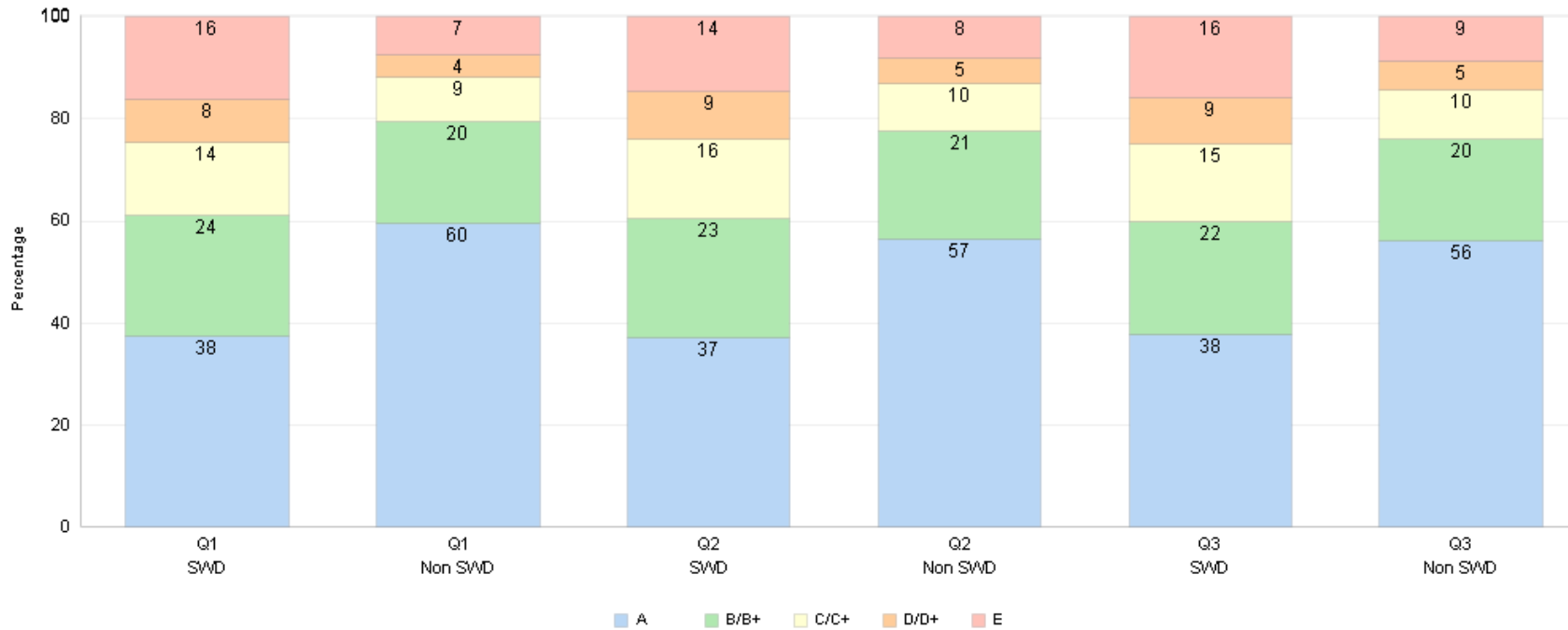


Mark Type - Quarter	Q1					Q2					Q3				
Marks	A	B/B+	C/C+	D/D+	E	A	B/B+	C/C+	D/D+	E	A	B/B+	C/C+	D/D+	E
White N =	15,337	4,368	1,641	574	675	14,551	4,635	1,817	691	699	14,091	4,491	1,857	782	828

### Change comparison for the quarters of the 2020-2021 school year

	White				
Mark Type - Quarter	A	B/B+	C/C+	D/D+	E
Q2	(2.90)▼	1.37▲	0.85▲	0.55▲	0.13▲
Q3	(1.07)▼	(0.33)▼	0.31▲	0.46▲	0.63▲

## High School Grade Distribution - SWD & Non-SWD 2020-2021



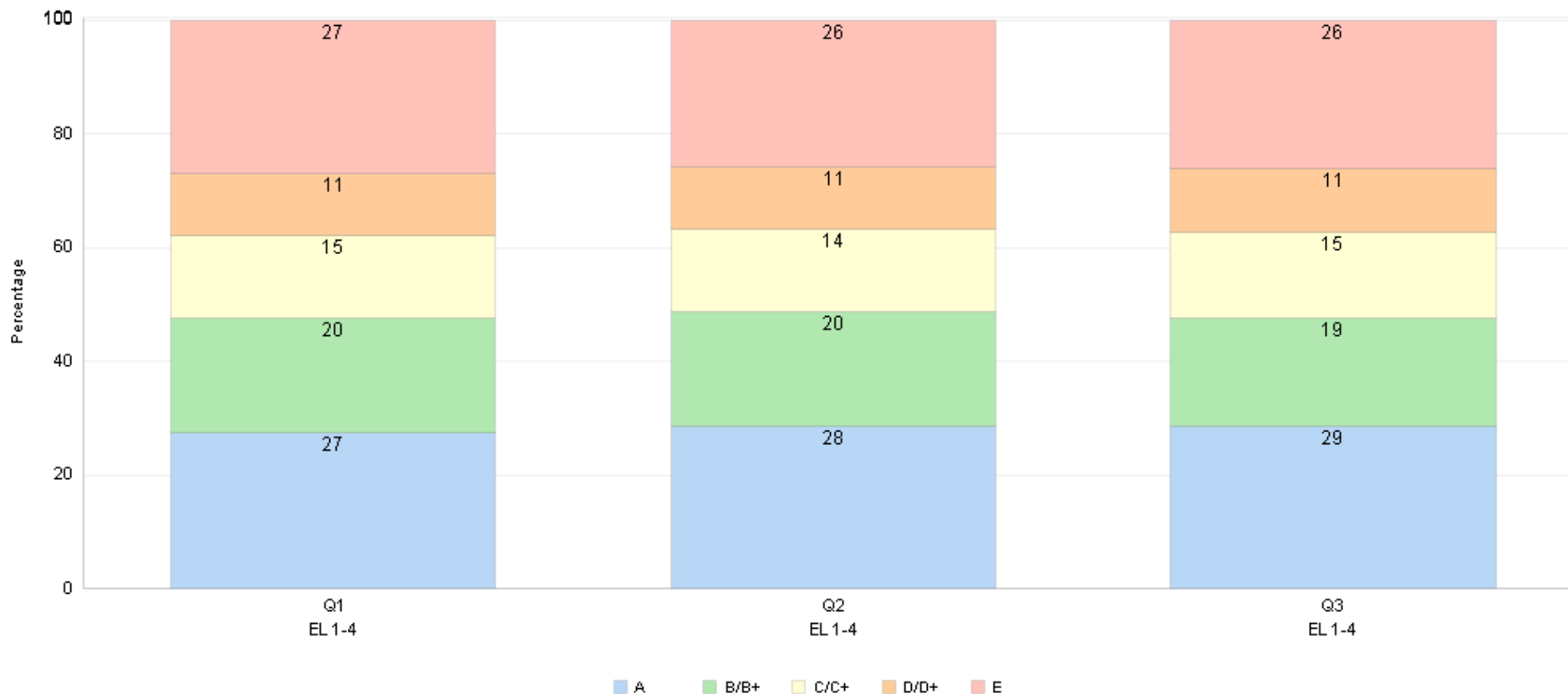
Mark Type - Quarter	Q1					Q2					Q3				
Marks	A	B/B+	C/C+	D/D+	E	A	B/B+	C/C+	D/D+	E	A	B/B+	C/C+	D/D+	E
SWD N =	3,023	1,893	1,154	672	1,291	2,959	1,858	1,250	747	1,153	2,979	1,757	1,202	735	1,240
Non SWD N =	24,655	8,228	3,624	1,797	2,991	23,177	8,574	3,890	2,052	3,231	22,554	7,969	3,969	2,143	3,527

### Change comparison for the quarters of the 2020-2021 school year

Mark Type - Quarter	SWD				
	A	B/B+	C/C+	D/D+	E
Q2	(0.49)▼	(0.24)▼	1.32▲	1.01▲	(1.60)▼
Q3	0.51▲	(1.12)▼	(0.50)▼	(0.09)▼	1.20▲

Mark Type - Quarter	Non SWD				
	A	B/B+	C/C+	D/D+	E
Q2	(3.07)▼	1.03▲	0.73▲	0.66▲	0.65▲
Q3	(0.48)▼	(1.11)▼	0.38▲	0.32▲	0.89▲

## High School Grade Distribution - EL 1-4 2020-2021

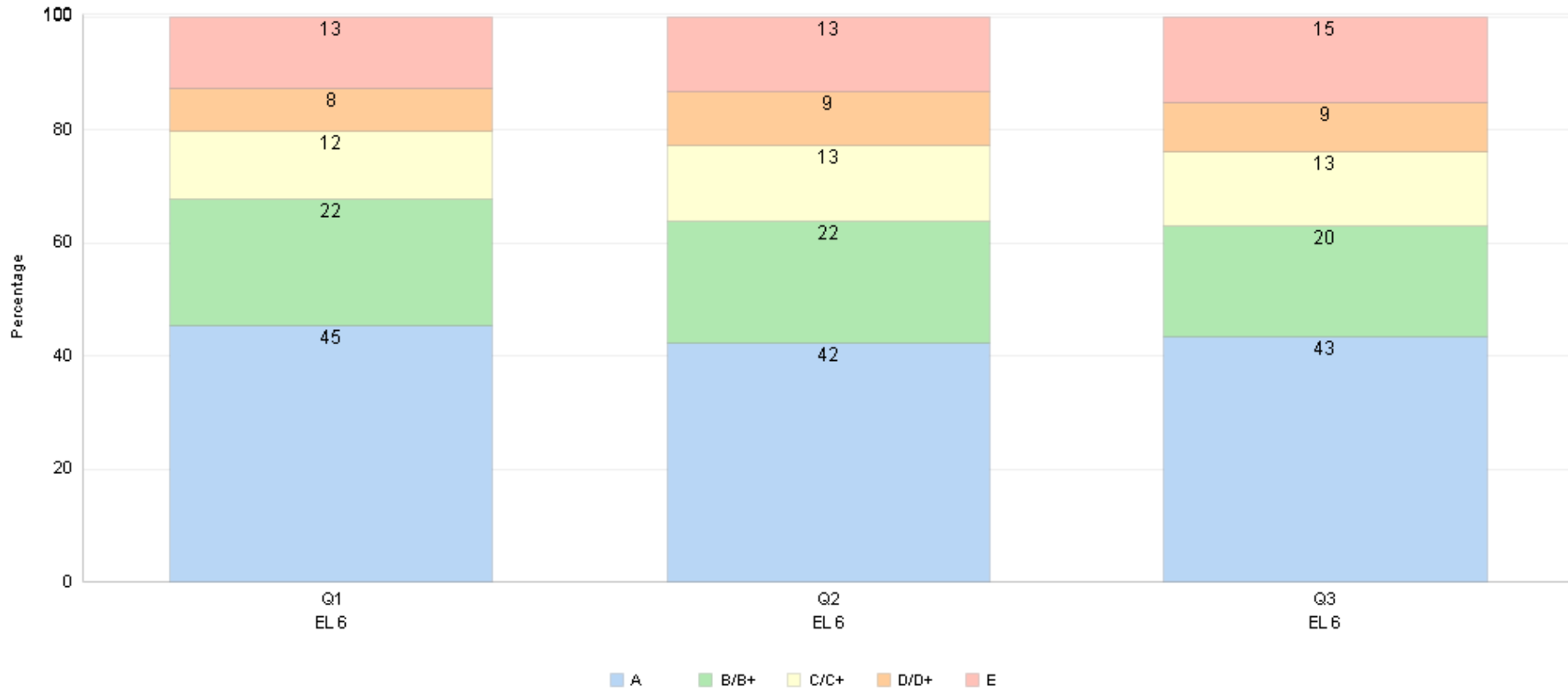


Mark Type - Quarter	Q1					Q2					Q3				
Marks	A	B/B+	C/C+	D/D+	E	A	B/B+	C/C+	D/D+	E	A	B/B+	C/C+	D/D+	E
EL 1-4 N =	1,445	1,054	769	580	1,419	1,484	1,060	756	573	1,341	1,430	948	751	549	1,306

### Change comparison for the quarters of the 2020-2021 school year

	EL 1-4				
Mark Type - Quarter	A	B/B+	C/C+	D/D+	E
Q2	1.03 ▲	0.32 ▲	(0.10) ▼	(0.02) ▼	(1.22) ▼
Q3	0.23 ▲	(1.31) ▼	0.57 ▲	0.03 ▲	0.48 ▲

## High School Grade Distribution - EL 6 2020-2021

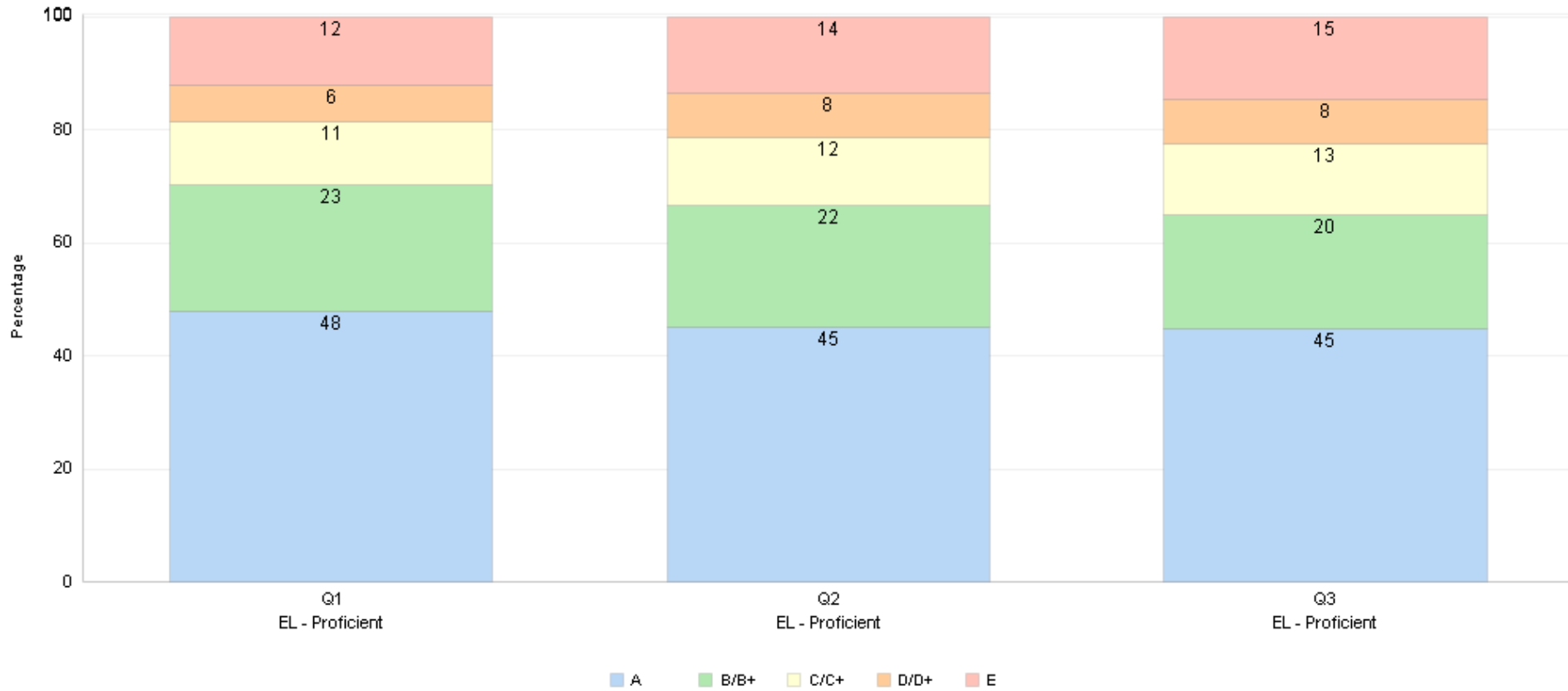


Mark Type - Quarter	Q1					Q2					Q3				
Marks	A	B/B+	C/C+	D/D+	E	A	B/B+	C/C+	D/D+	E	A	B/B+	C/C+	D/D+	E
EL 6 N =	1,075	524	284	179	302	986	503	314	217	311	996	449	300	202	347

### Change comparison for the quarters of the 2020-2021 school year

	EL 6				
Mark Type - Quarter	A	B/B+	C/C+	D/D+	E
Q2	(3.17)▼	(0.59)▼	1.46▲	1.74▲	0.57▲
Q3	1.12▲	(2.01)▼	(0.39)▼	(0.50)▼	1.78▲

## High School Grade Distribution - EL Proficient 2020-2021

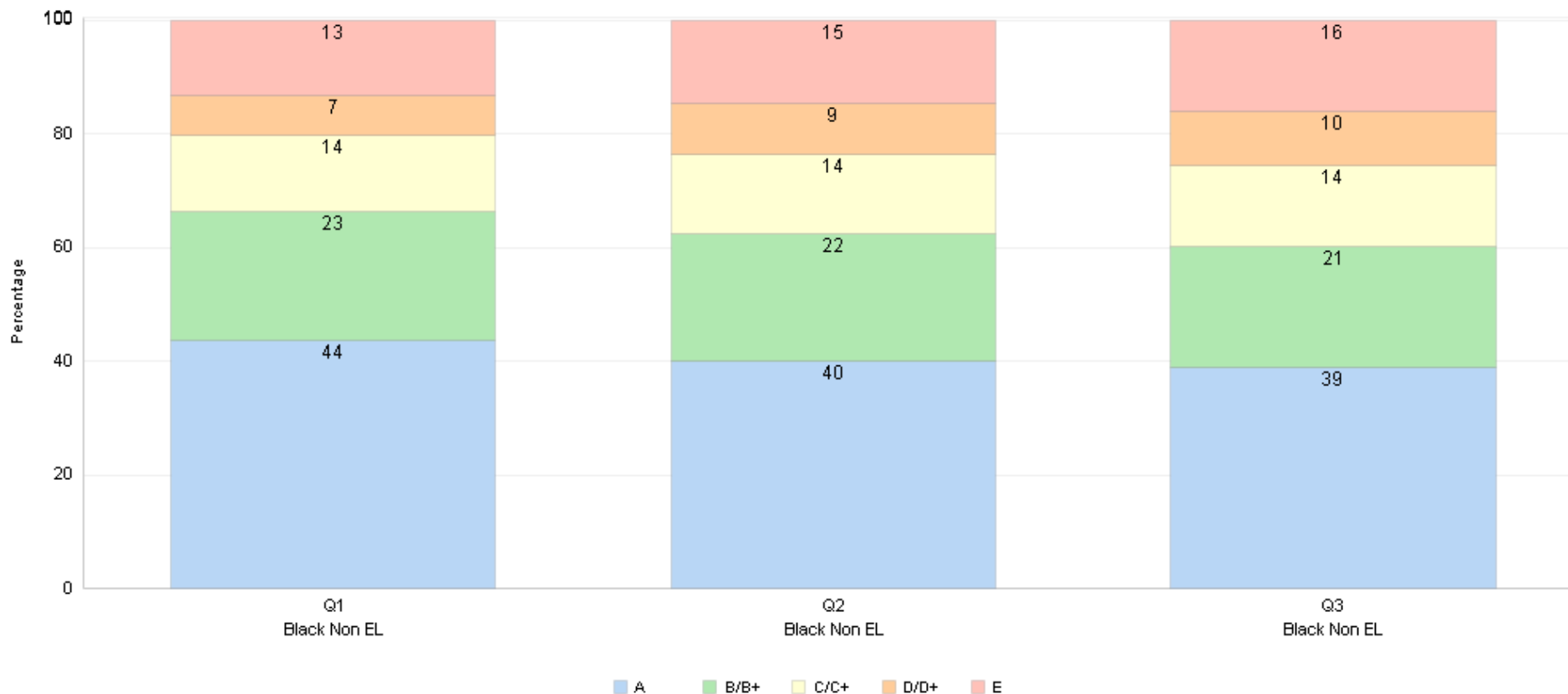


Mark Type - Quarter	First Quarter					Second Quarter					Third Quarter				
Marks	A	B/B+	C/C+	D/D+	E	A	B/B+	C/C+	D/D+	E	A	B/B+	C/C+	D/D+	E
EL Proficient N =	3,744	1,768	874	506	945	3,469	1,671	928	593	1,045	3,397	1,528	955	599	1,102

### Change comparison for the quarters of the 2020-2021 school year

	EL Proficient				
Mark Type - Quarter	A	B/B+	C/C+	D/D+	E
Q2	(2.76)▼	(0.88)▼	0.89▲	1.24▲	1.50▲
Q3	(0.21)▼	(1.53)▼	0.55▲	0.21▲	0.98▲

## High School Grade Distribution - Black Non-EL 2020-2021



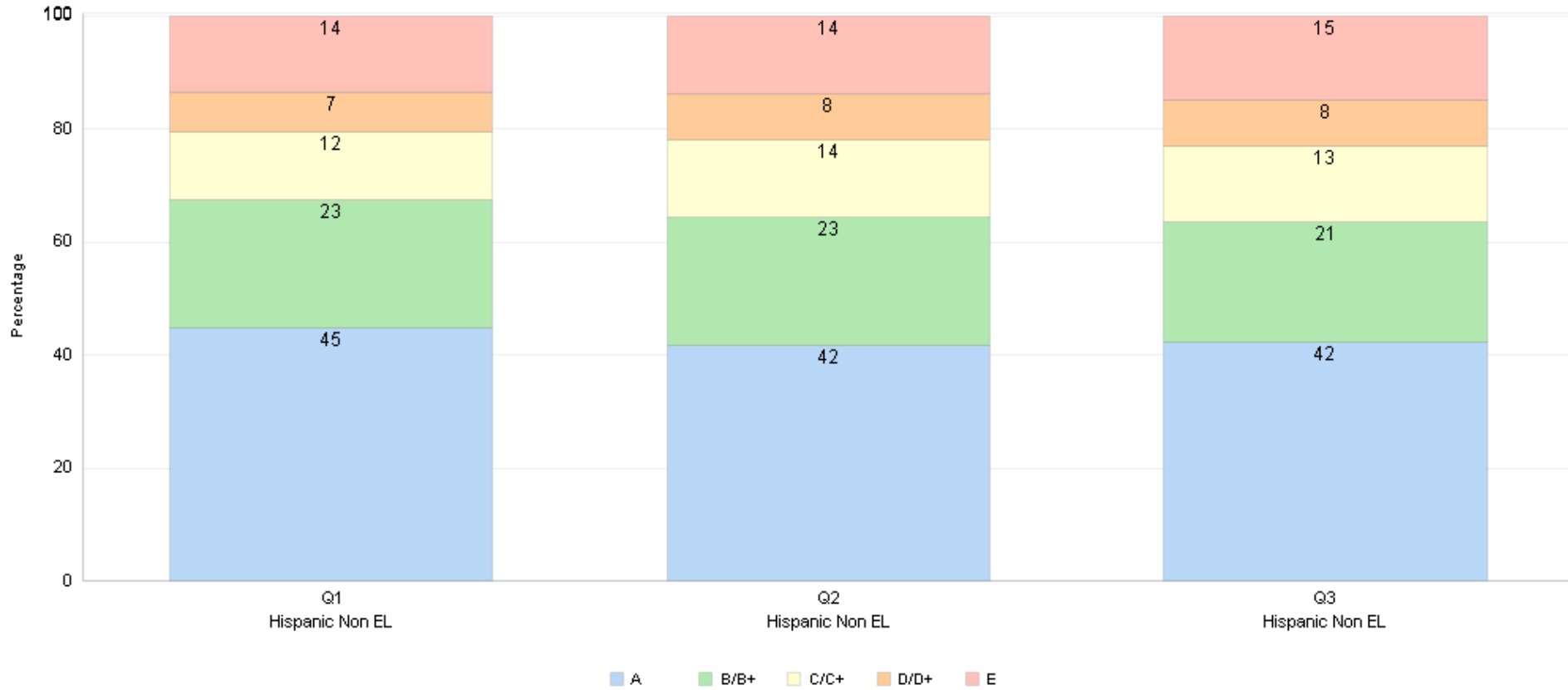
Mark Type - Quarter	Q1					Q2					Q3				
Marks	A	B/B+	C/C+	D/D+	E	A	B/B+	C/C+	D/D+	E	A	B/B+	C/C+	D/D+	E
Black Non EL N =	1,883	969	582	304	567	1,705	959	594	385	621	1,637	899	605	401	674

### Change comparison for the quarters of the 2020-2021 school year

	Black Non EL				
Mark Type - Quarter	A	B/B+	C/C+	D/D+	E
Q2	(3.75)▼	(0.02)▼	0.41▲	1.97▲	1.39▲
Q3	(1.16)▼	(1.17)▼	0.42▲	0.48▲	1.42▲



## High School Grade Distribution - Hispanic Non-EL 2020-2021

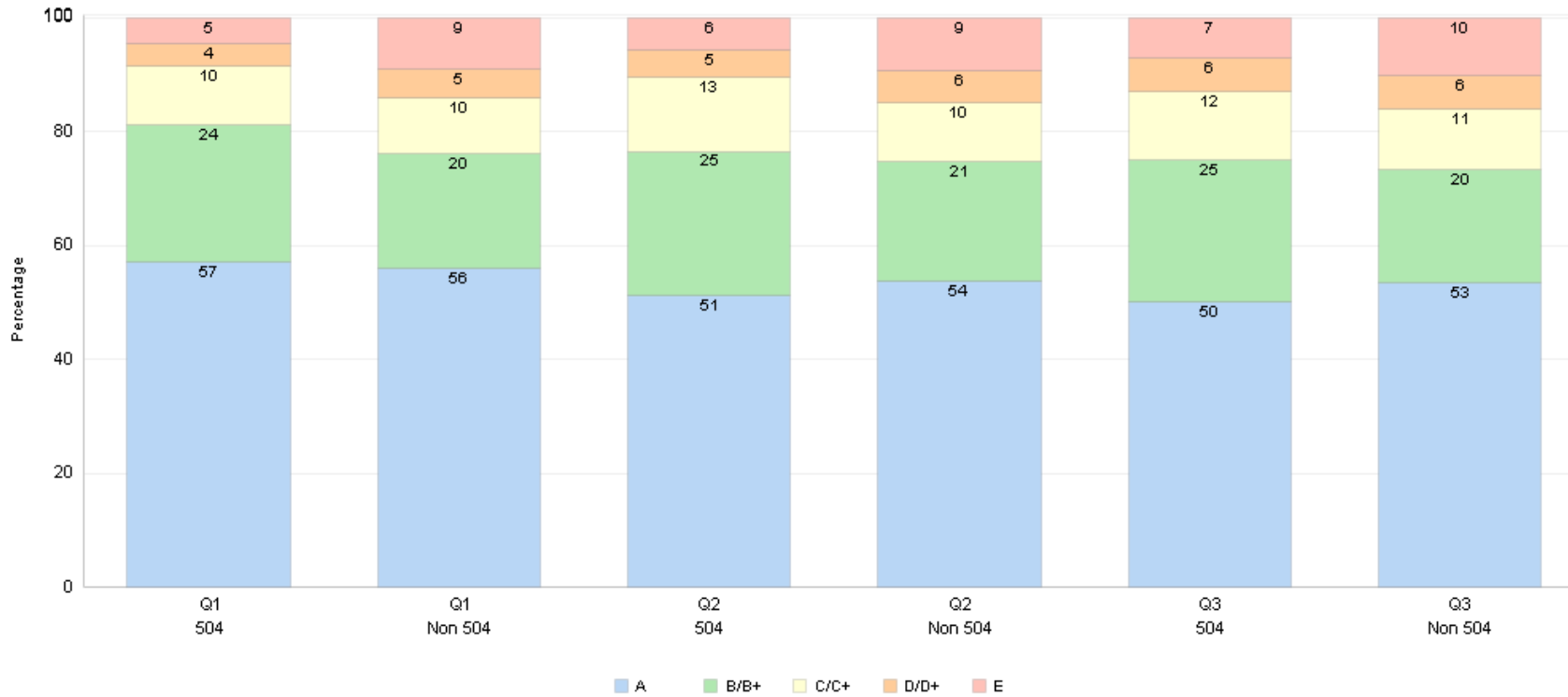


Mark Type - Quarter	Q1					Q2					Q3				
Marks	A	B/B+	C/C+	D/D+	E	A	B/B+	C/C+	D/D+	E	A	B/B+	C/C+	D/D+	E
Hispanic Non EL N =	4,104	2,092	1,104	640	1,244	3,761	2,039	1,218	731	1,247	3,695	1,865	1,169	706	1,312

### Change comparison for the quarters of the 2020-2021 school year

	Hispanic Non EL				
Mark Type - Quarter	A	B/B+	C/C+	D/D+	E
Q2	(2.88)▼	(0.11)▼	1.52▲	1.16▲	0.32▲
Q3	0.44▲	(1.34)▼	(0.17)▼	(0.05)▼	1.14▲

## High School Grade Distribution - 504 & Non-504 2020-2021



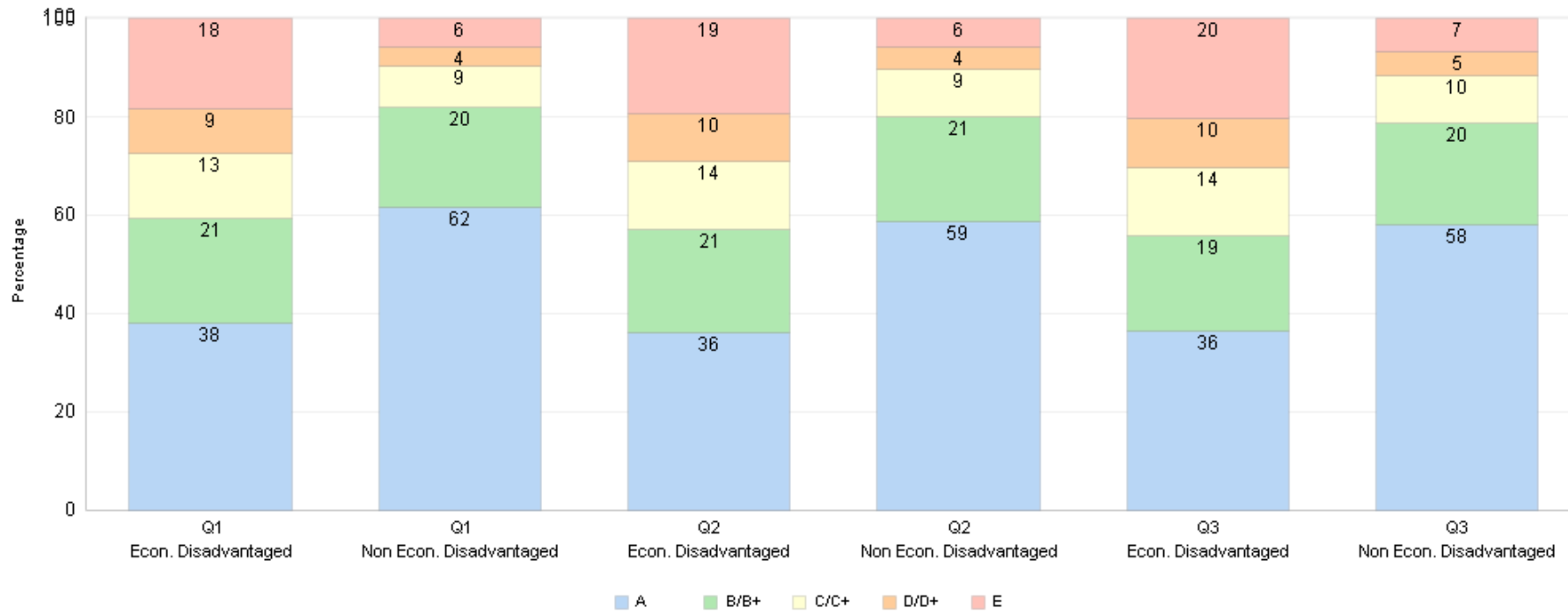
Mark Type - Quarter	Q1					Q2					Q3				
Marks	A	B/B+	C/C+	D/D+	E	A	B/B+	C/C+	D/D+	E	A	B/B+	C/C+	D/D+	E
504 N =	2,286	960	414	156	181	2,005	997	508	190	223	1,912	963	451	230	271
Non 504 N =	25,392	9,161	4,364	2,313	4,101	24,131	9,435	4,632	2,609	4,161	23,621	8,763	4,720	2,648	4,496

### Change comparison for the quarters of the 2020-2021 school year

		504				
Mark Type - Quarter		A	B/B+	C/C+	D/D+	E
Q2		(6.08)▼	1.40 ▲	2.59 ▲	0.94 ▲	1.16 ▲
Q3		(1.15)▼	(0.25)▼	(1.16)▼	1.17 ▲	1.40 ▲

		Non 504				
Mark Type - Quarter		A	B/B+	C/C+	D/D+	E
Q2		(2.35)▼	0.77 ▲	0.67 ▲	0.70 ▲	0.21 ▲
Q3		(0.28)▼	(1.18)▼	0.37 ▲	0.18 ▲	0.91 ▲

## High School Grade Distribution 2020-2021



Mark Type - Quarter	Q1					Q2					Q3				
Marks	A	B/B+	C/C+	D/D+	E	A	B/B+	C/C+	D/D+	E	A	B/B+	C/C+	D/D+	E
Econ. Disadvantaged N =	4,437	2,486	1,531	1,051	2,151	4,131	2,397	1,583	1,114	2,220	4,088	2,179	1,557	1,113	2,282
Non Econ. Disadvantaged N =	23,241	7,635	3,247	1,418	2,131	22,005	8,035	3,557	1,685	2,164	21,445	7,547	3,614	1,765	2,485

### Change comparison for the quarters of the 2020-2021 school year

Econ. Disadvantaged					
Mark Type - Quarter	A	B/B+	C/C+	D/D+	E
Q2	(1.97)▼	(0.38)▼	0.70 ▲	0.72 ▲	0.94 ▲
Q3	0.34 ▲	(1.52)▼	0.05 ▲	0.19 ▲	0.94 ▲

Non Econ. Disadvantaged					
Mark Type - Quarter	A	B/B+	C/C+	D/D+	E
Q2	(2.93)▼	1.19 ▲	0.88 ▲	0.74 ▲	0.12 ▲
Q3	(0.58)▼	(0.98)▼	0.31 ▲	0.29 ▲	0.96 ▲