



Education Center Reuse Community Newsletter (April 2021)

This is the April 2021 update on the status and progress of construction for the project. All monthly updates are posted to the project website and can be accessed via the following link:

<https://www.apsva.us/education-center-reuse/>

During the month of April, the general contractor, [MCN Build](#), has been completing activities throughout the building and site. Demolition continues to be one of the critical on-going activities and this month has included the demolition of new rooftop opening for the new elevator. The team has also continued work on critical components of the new structure including completing the new elevator shaft through the roof level, excavation, and installation of the new shear wall through the roof level, structural member fireproofing, and mock up installation. The team has also begun layout and framing on every floor of the building. Currently, the team is working on new mechanical, electrical, and plumbing (MEP) hangers on floors one through four with duct, piping, and electrical rough in installation ongoing on levels four and three. MEP coordination for the ground floor is nearing completion with smaller items outstanding on the other floors. Along with construction, the project team has continued to process submittals and engage in quality control reviews.

For the remainder of the project, the project team will be occupying the entire project site which will impact the sidewalks around the Ed Center building and parking spots in the VDOT parking garage.

Alongside this project, the Washington and Liberty High School structure is receiving a solar panel installation. The crews associated with this work are utilizing the space in and around the Education Center Reuse project.

As a reminder the project's community liaison is Robin Hodges, Arlington Public Schools, Design and Construction Project Manager who can be reached at (703) 872-9175 or robin.hodges@apsva.us.

Jeffrey D. Chambers, NCARB, AIA, Director of Design & Construction

MAIN BUILDING UPDATE

Completed and ongoing tasks:

- Project submittal and review process **(Ongoing)**
- Installation of temporary building protection **(Ongoing)**
- Demolition of Existing Stairwells **(Ongoing)**
- New elevator Shaft Installation **(Concrete Complete, Steel Ongoing)**
- Installation of below grade plumbing **(Ongoing)**
- Excavation and Installation of exterior utility trench **(Ongoing)**
- Interior framing of existing steel columns **(Ongoing)**
- New Stair B Shear Wall Installation **(Ongoing)**
- Interior Fire Proofing Mock Up **(Ongoing)**
- Installation of MEP Components on Fourth Floor **(Ongoing)**
- Installation of MEP Components on Third Floor **(Ongoing)**
- Installation of MEP Components on Second Floor **(Ongoing)**
- Installation of MEP Components on First Floor **(Ongoing)**
- Installation of Curtain Wall Components **(Ongoing)**
- Spray Fireproofing Installation **(Ongoing)**

Construction activities planned next month:

- MEP coordination, layout, and rough ins
- Curtain Wall Installation
- Stair A Slab Preparation and Installation
- Roof Fall Protection Installation
- Fourth Floor Room Mock Ups
- Exterior Concrete Repairs
- Curtain Wall Mock Up with Glass

Process related activities:

- Construction activities will continue between 7am to 5pm on weekdays and Saturdays. Sunday work is not scheduled at this time but may occur periodically as needed to stay on schedule.

PLANETARIUM UPDATE

Completed and ongoing tasks:

- Monitoring/Conditioning of Interior of Planetarium **(Ongoing)**
- Layout of new facilities for Planetarium **(Ongoing)**
- Abatement of Interior Asbestos Containing Materials **(Complete)**
- Existing Mechanical and Plumbing Work Demolition **(Ongoing)**

Construction activities planned next month:

- New Mechanical and Plumbing Work Layout
- New Interior Build Out Scope Detailing

Progress Photos:



View of the Front of the Building



View of the Rear of the Building



View of the Building from Washington Liberty High School



View of Exterior on East Side of Building



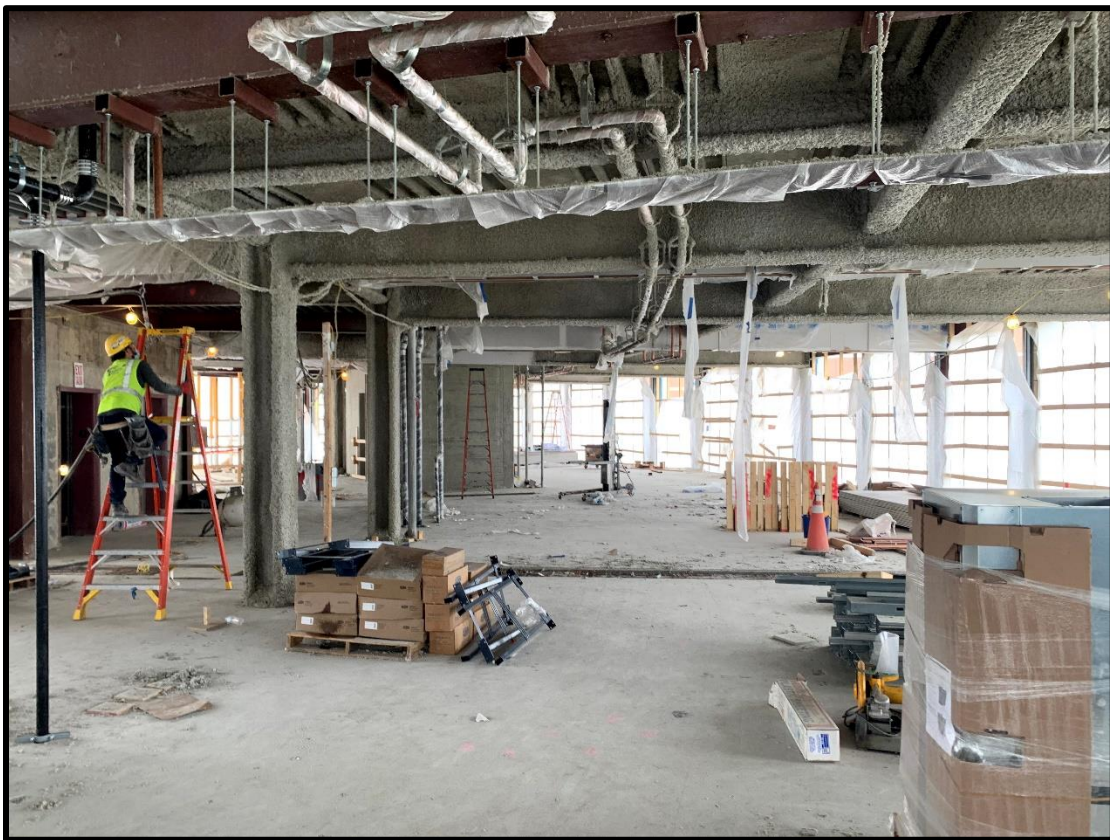
View of Rear of Building from Washington Liberty High School



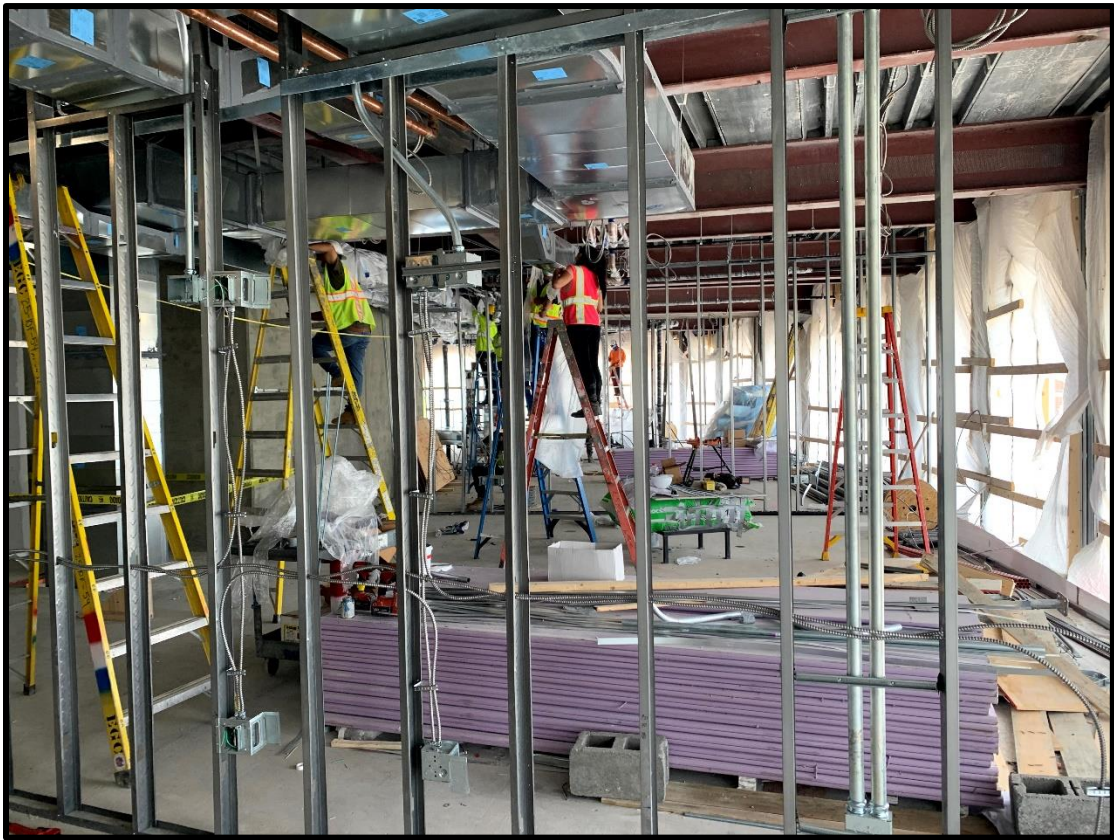
View of Work Ongoing on the Ground Floor



View of Work Ongoing on Level 1



View of Work Ongoing on Level 2



View of Work Ongoing on Level 3



View of Work Ongoing on Level 4



View of Working Ongoing on Roof