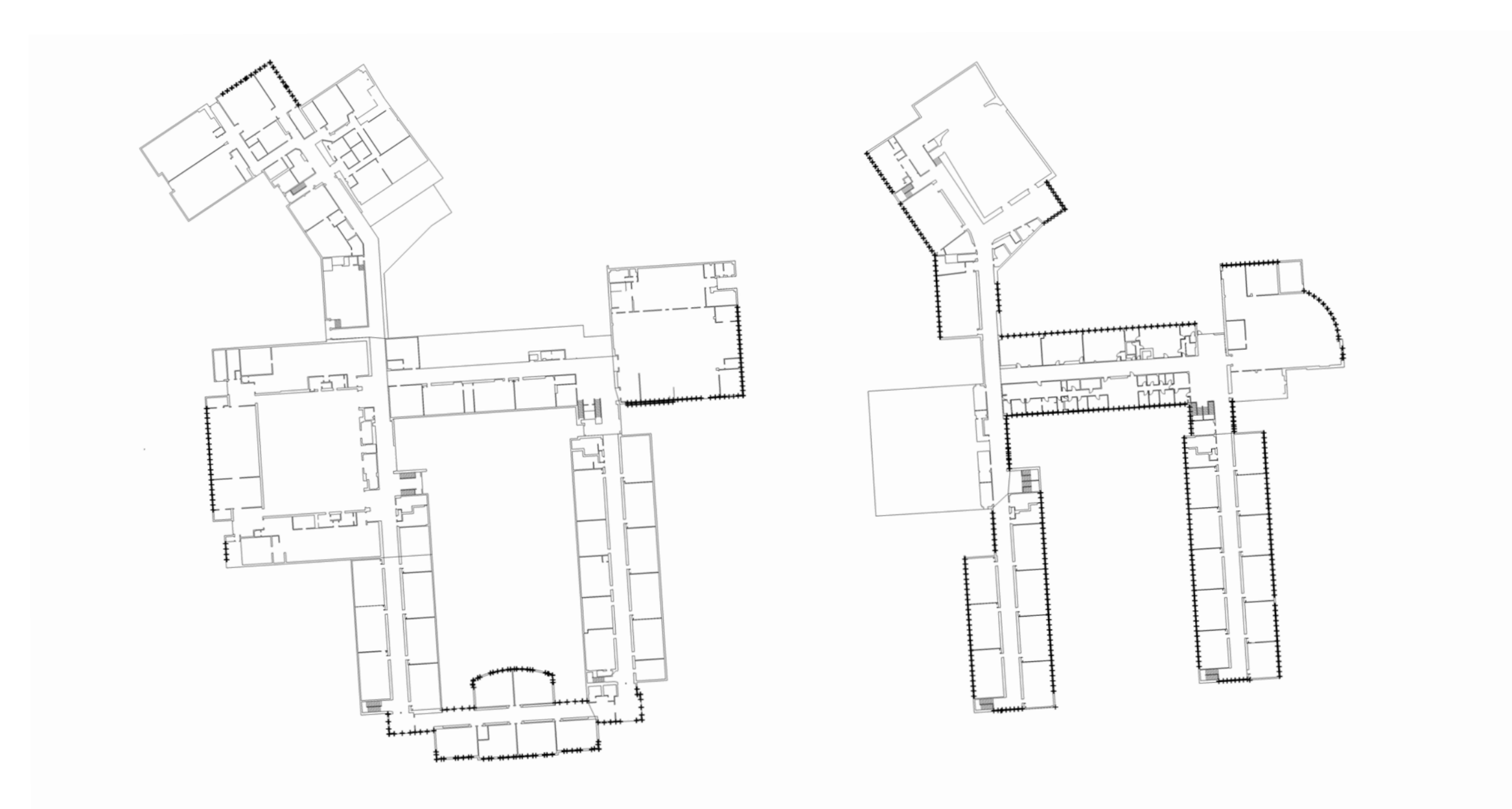


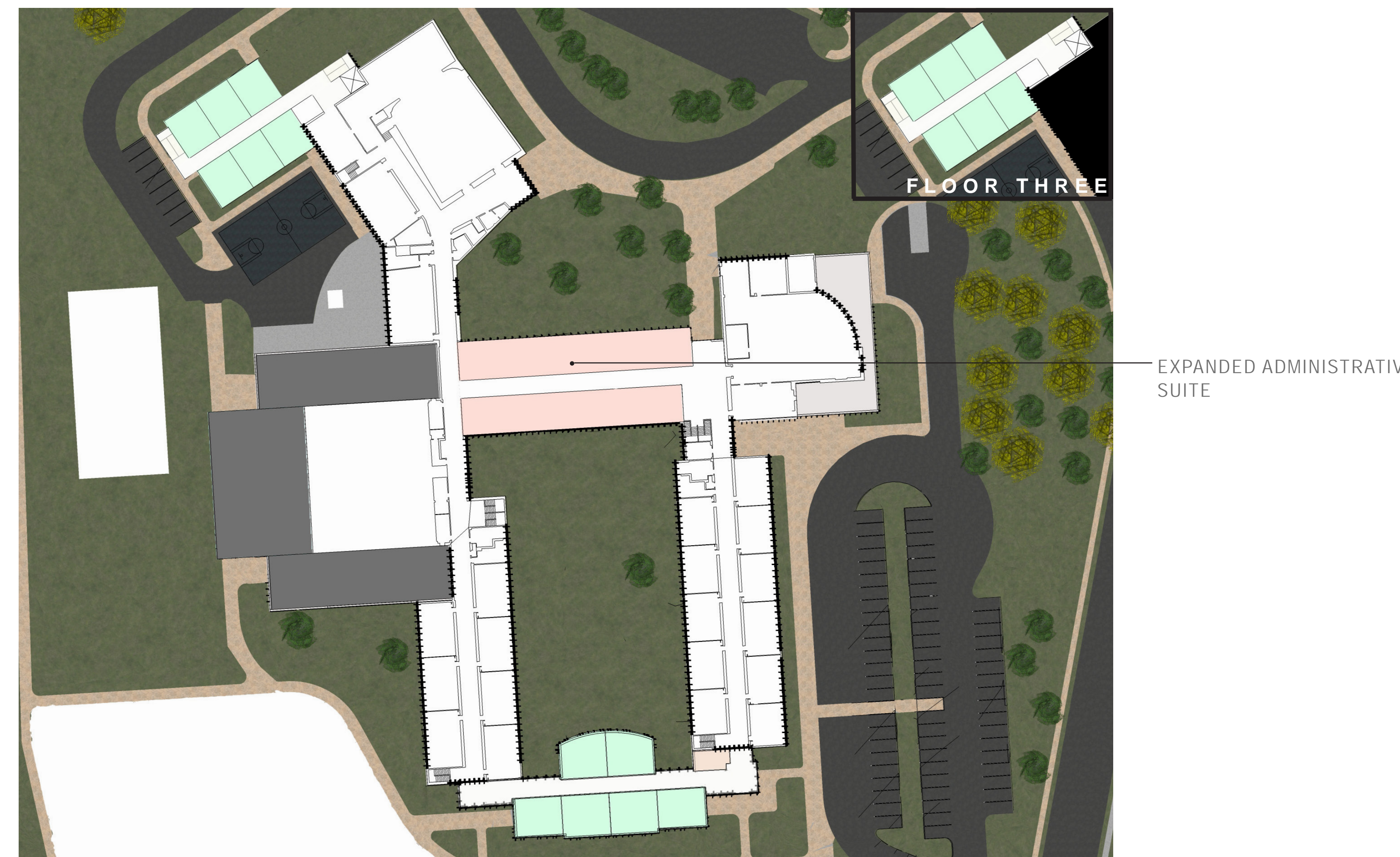
1" = 100'
SITE PLAN



1" = 100'
EXISTING CONDITION



1" = 50'
FLOOR ONE



1" = 50'
FLOOR TWO



On the second floor we propose to move the administrative suite to the front wall of the school.

- We are suggesting addition scenarios as follows:
1. On the second floor of the existing recent one-story addition on the school's south side. Net gain of (6) classrooms.
 2. In a discreet three story addition at the school's existing vocational wing, which would be partially demolished and rebuilt as a multistory wing with vocational space on a ground floor and academic space atop.
 3. A small addition to the auxiliary gym.

- CIRCULATION
- STORAGE/CUST.
- BATHROOMS
- MECHANICAL
- ACADEMIC
- RESOURCE/SUPPORT
- LAB/STUDIO
- INFORMAL/FLEX
- GYM
- LOCKER
- PERFORMANCE ART
- LIBRARY
- DINING / KITCHEN
- FITNESS
- ADMINISTRATION

Pros/Cons