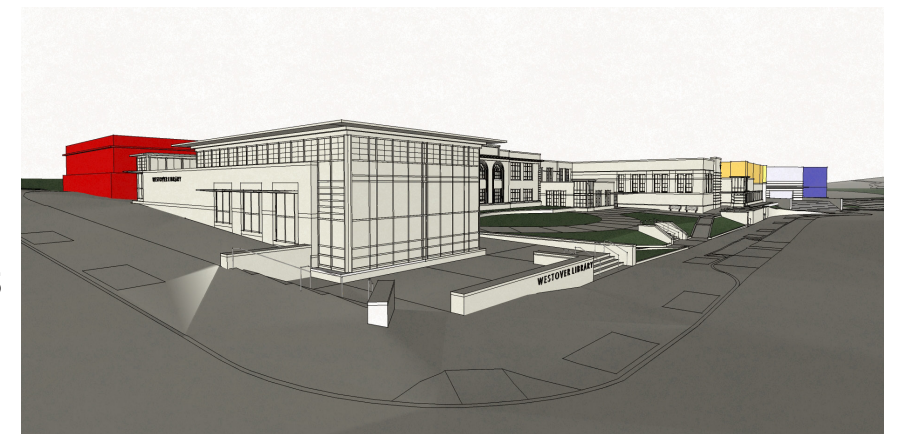
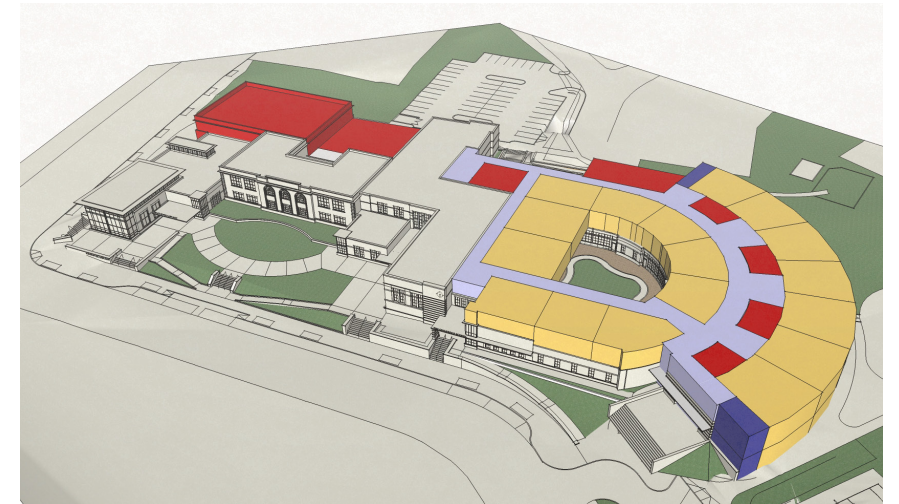
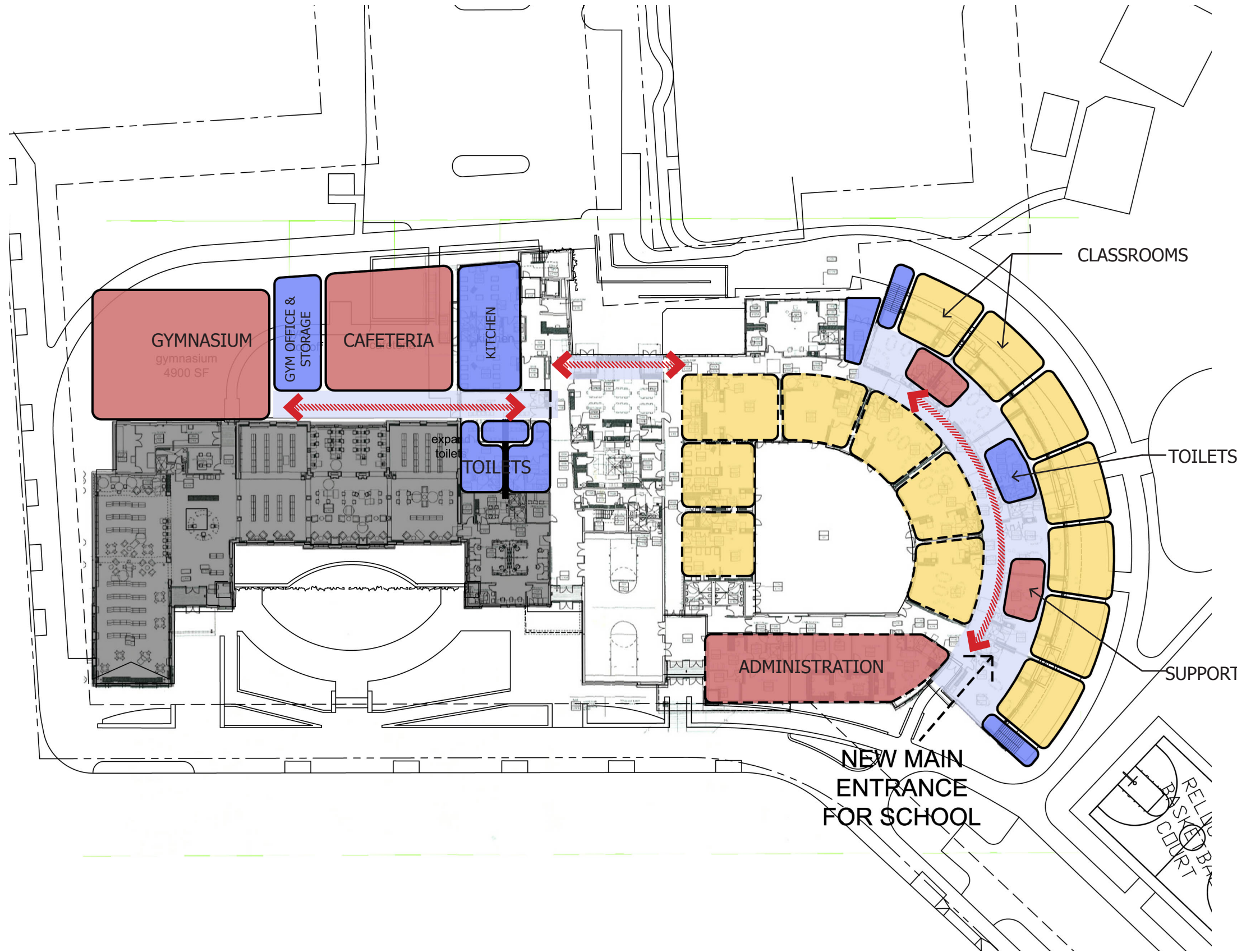


# THE REED SCHOOL



NEW CIRCULATION

CLASSROOM

CORE + SUPPORT

SERVICES

**NOTES:**

- MAINTAIN EXISTING FIELDS AND SLEDDING HILL
- 60,000 SQUARE FOOT ADDITION, TOTAL SCHOOL BUILDING OF 99,000 SF
- COMPLETE MASTERPLAN BY ADDING SECOND STORY TO EXISTING 1 STORY SCHOOL
- ADD TO CLASSROOM FOOTPRINT USING EXISTING GEOMETRY FOR COMPATIBILITY
- LOCATE GYMNASIUM AND CAFETERIA NEAR LIBRARY FOR EASE OF COMMUNITY ACCESS.



SCALE 1: 50