

ARLINGTON PUBLIC SCHOOLS
EXPANSION FEASIBILITY STUDY
FEBRUARY 2012

MADISON COMMUNITY CENTER + ELEMENTARY SCHOOL

THE REED SCHOOL

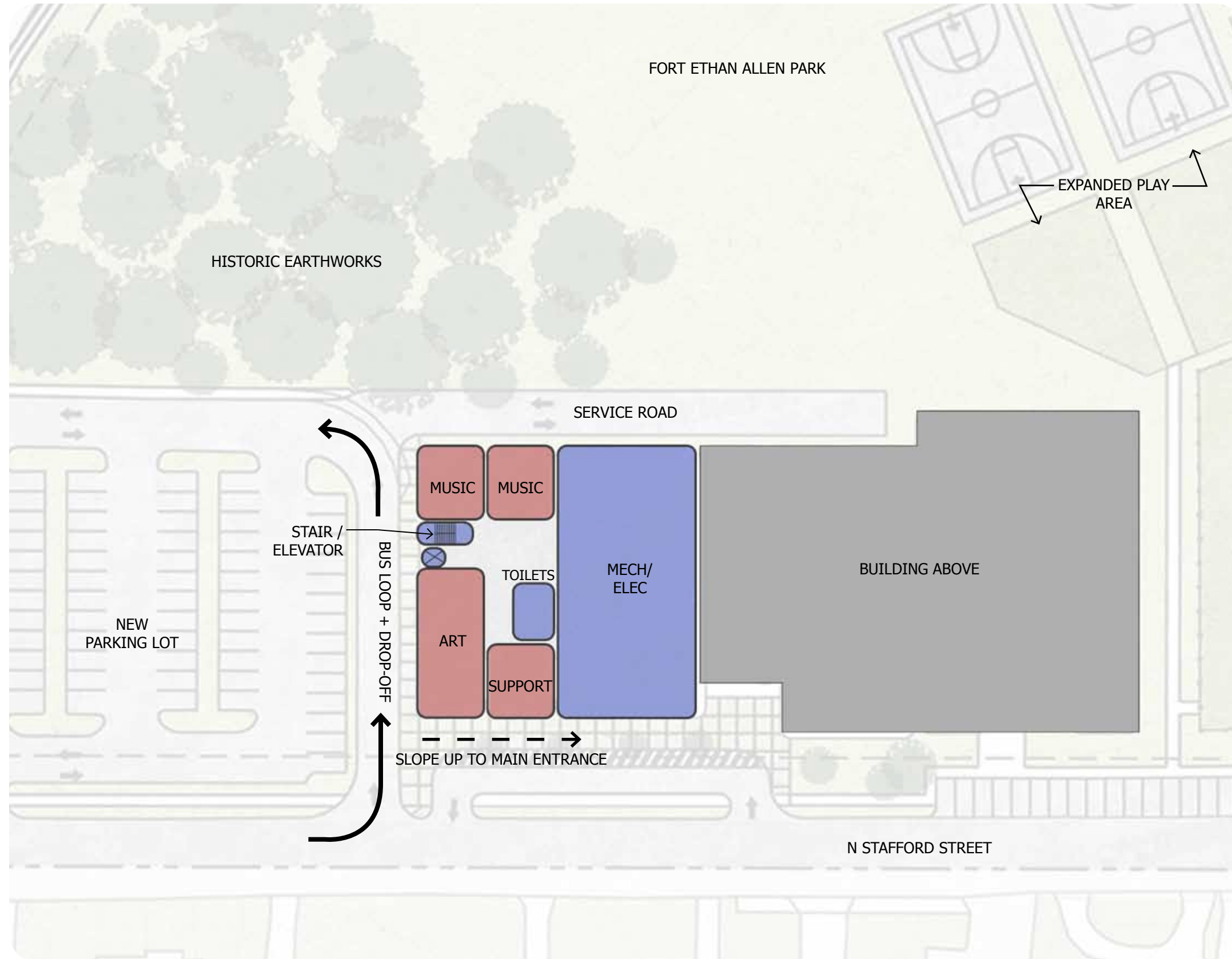
TABLE OF CONTENTS

MADISON SITE PLANS	1
MADISON PLANS	3
REED SITE PLANS	7
REED PLANS	9







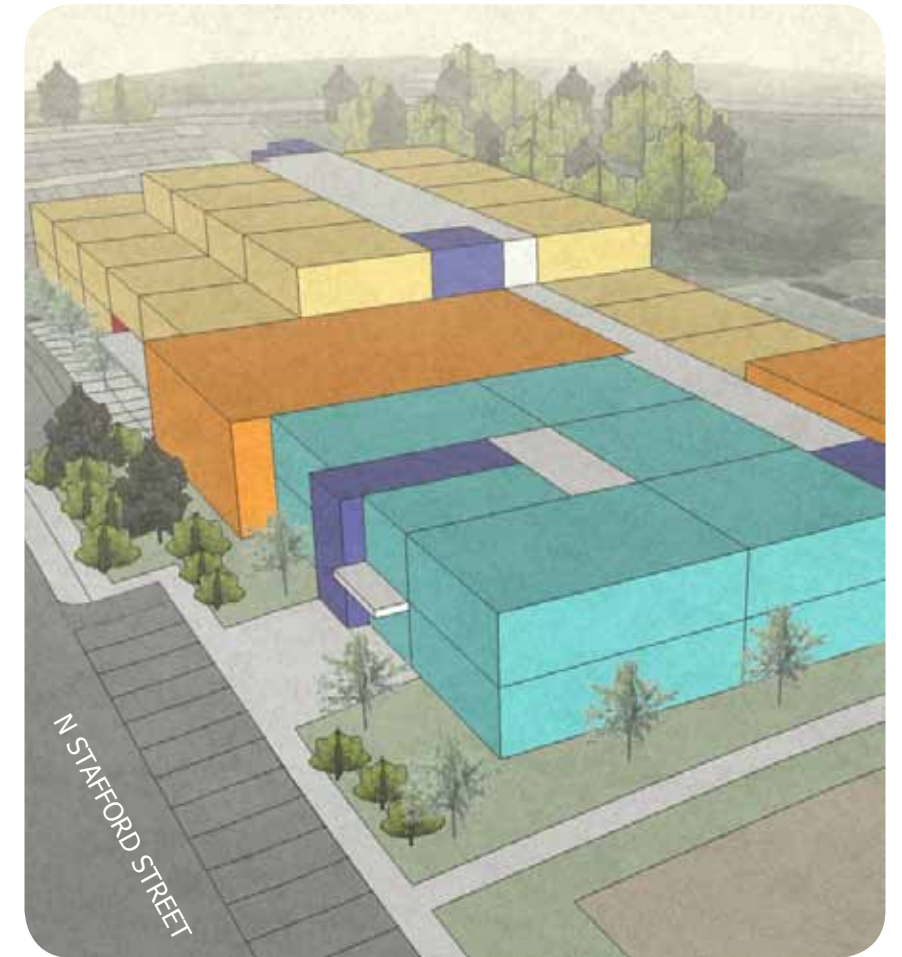
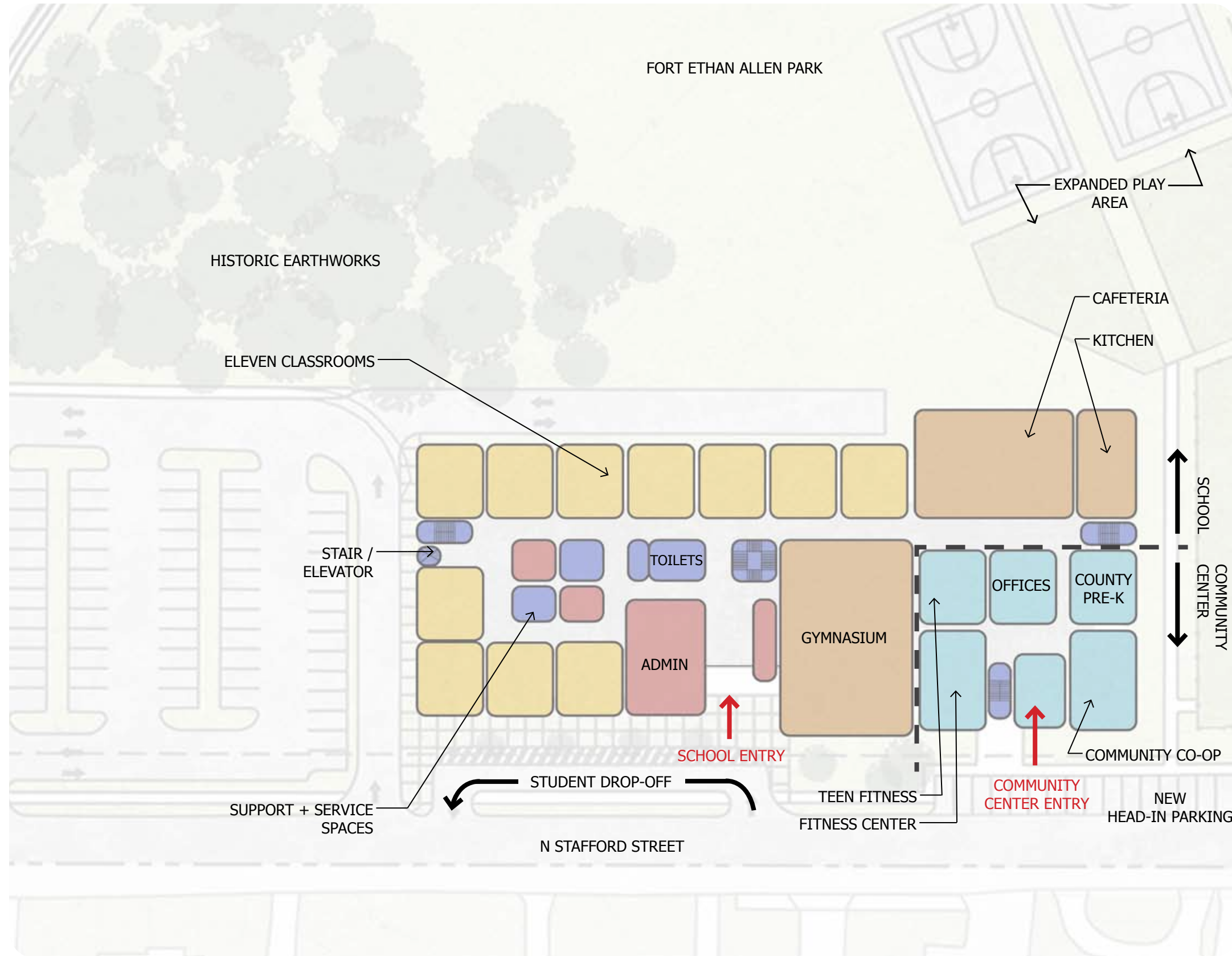


NOTES:

- PARTIAL FIRST FLOOR AT LOW POINT IN SITE TOPOGRAPHY
- ENTRY FROM BUS LOOP IS AT GRADE
- CREATES "FINE ARTS WING" FOR SCHOOL, ART ROOM HAS DIRECT VIEWS TO THE EXTERIOR DUE TO SLOPE IN TOPOGRAPHY



SCALE 1: 50



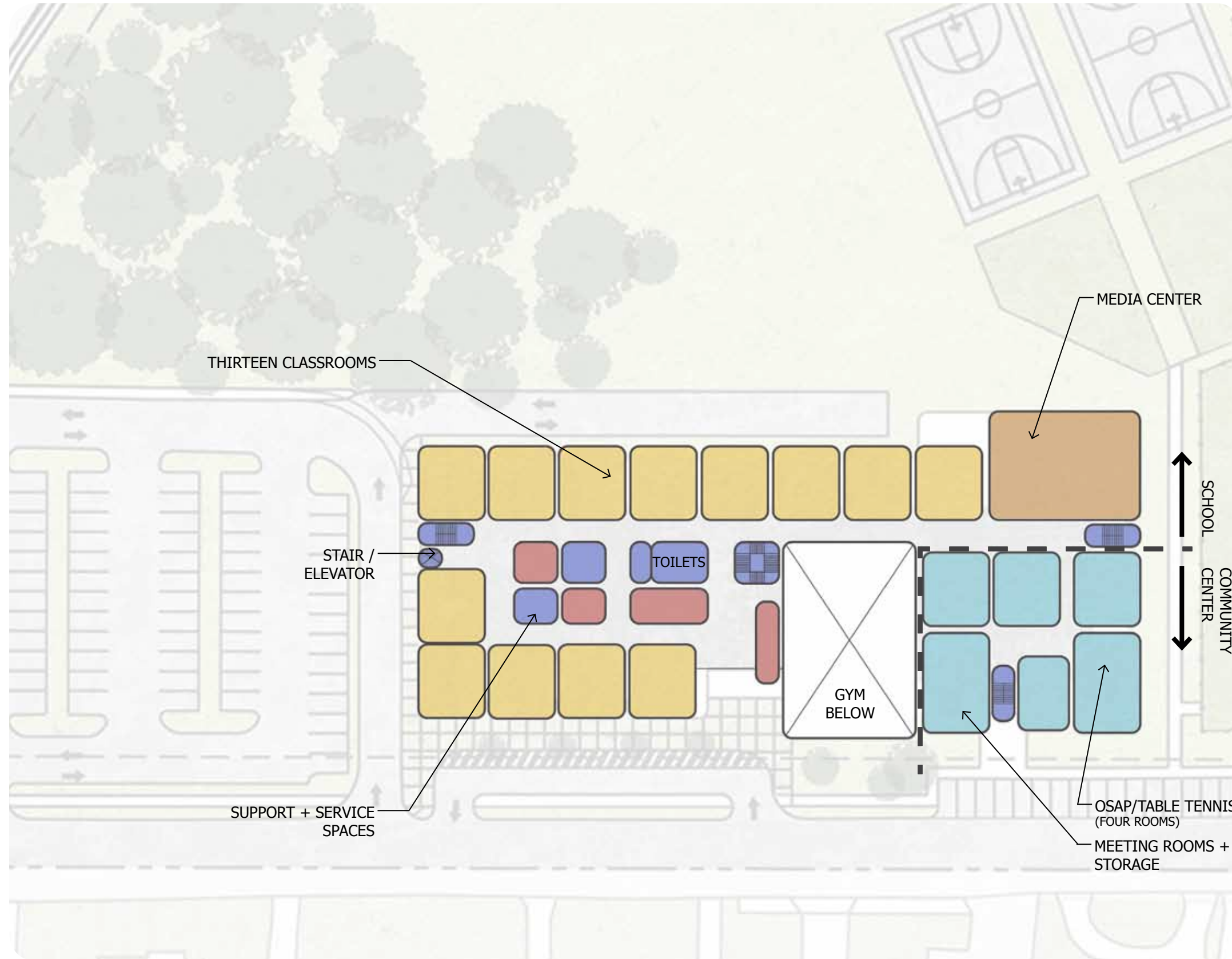
SHARED	COMMUNITY
CLASSROOM	CORE + SUPPORT SERVICES

NOTES:

- COMMUNITY CENTER PROGRAM IS 16,400 SF AND ELEMENTARY SCHOOL IS 90,500 SF, TOTAL BUILDING IS 106,900 SF
- BOTH COMMUNITY CENTER AND SCHOOL ENTRIES ARE AT GRADE FROM N STAFFORD STREET
- OPPORTUNITY TO SHARE LARGE CORE SPACES, SUCH AS MEDIA CENTER, CAFETERIA AND GYM
- POSSIBILITY OF SHARING ADDITIONAL SCHOOL SPACES DEPENDING ON SCHOOL AGE GROUP



SCALE 1: 50



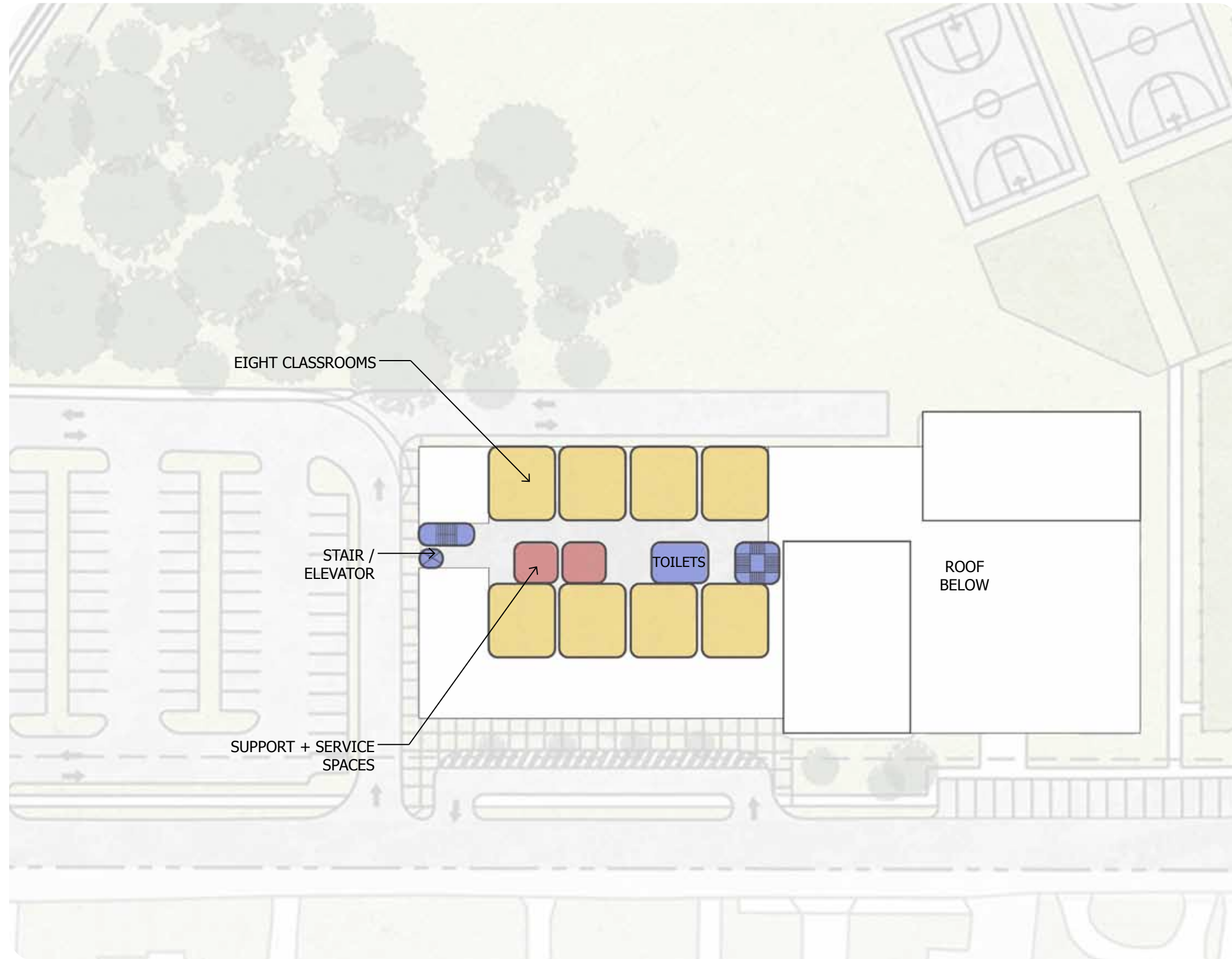
SHARED		COMMUNITY
CLASSROOM	CORE + SUPPORT	SERVICES

NOTES:

- THIRD FLOOR OVER SCHOOL AND COMMUNITY CENTER
- TWO STORIES ABOVE GRADE AT N STAFFORD STREET

N


SCALE 1: 50



SHARED		COMMUNITY
CLASSROOM	CORE + SUPPORT	SERVICES

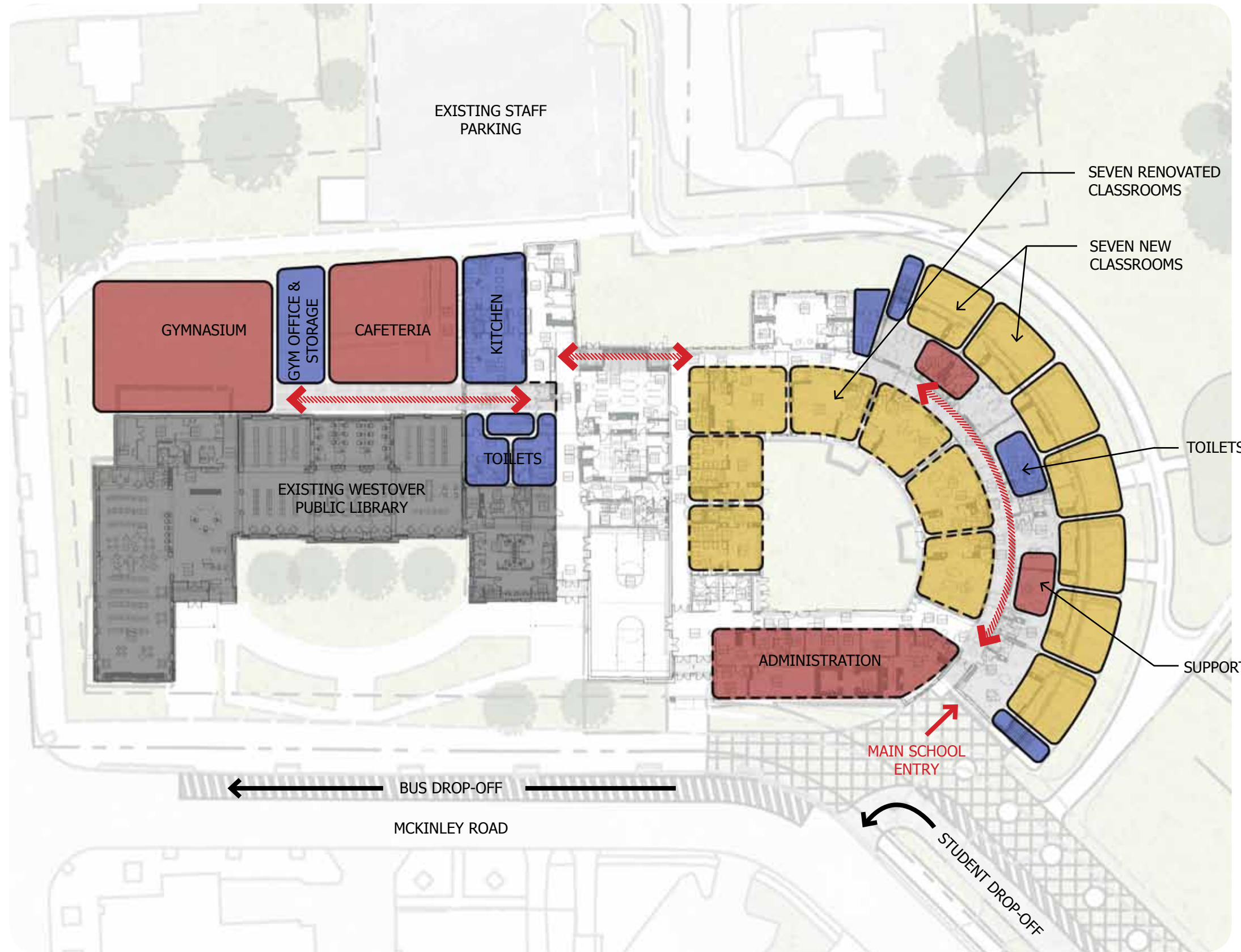
NOTES:

- TIERED FOURTH FLOOR STEPS BACK AT THE STREET FACE OF THE BUILDING

 SCALE 1: 50







NEW CIRCULATION

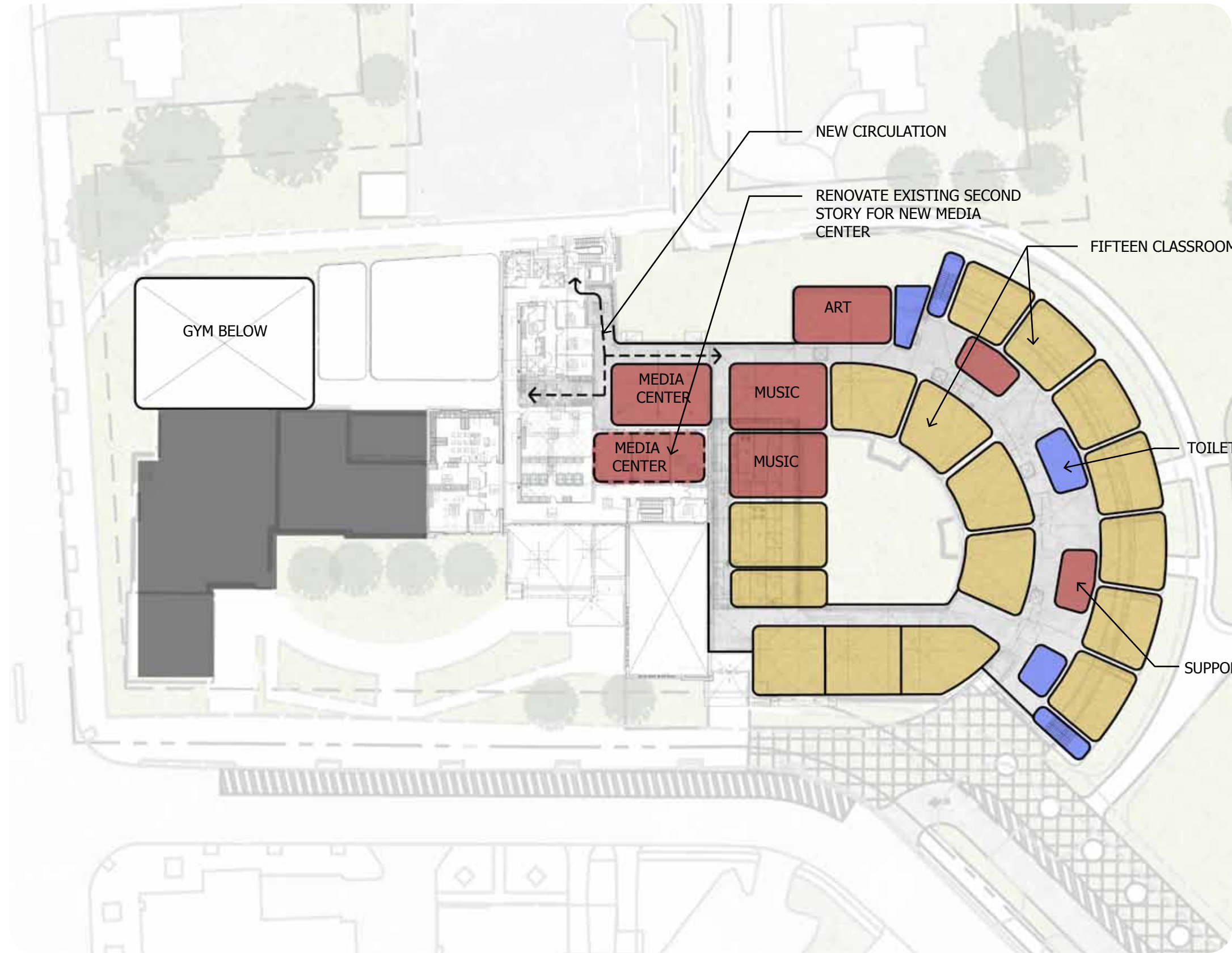
CLASSROOM CORE + SUPPORT SERVICES

NOTES:

- MAINTAIN EXISTING FIELDS AND SLEDDING HILL
- 60,000 SQUARE FOOT ADDITION, TOTAL SCHOOL BUILDING OF 99,000 SF
- COMPLETE MASTERPLAN BY ADDING SECOND STORY TO EXISTING ONE STORY SCHOOL
- ADD TO CLASSROOM FOOTPRINT USING EXISTING GEOMETRY FOR COMPATIBILITY
- LOCATE GYMNASIUM AND CAFETERIA NEAR LIBRARY FOR EASE OF COMMUNITY ACCESS



SCALE 1: 50



CLASSROOM	CORE + SUPPORT	SERVICES
		SCALE 1: 50