



EXISTING PEDESTRIAN PATH

EXISTING SERVICE COURT AND DRIVE

SITE EXTENTS

EXISTING VISITOR PARKING



1" = 100'



VIEW FROM NORTHEAST



VIEW FROM SOUTHWEST



- PARTIALLY RE-DIRECTED PEDESTRIAN PATH
- NEW ELEVATED PARKING AND DRIVE TO S. QUINCY ST.
- NEW ADDITIONS
- EXPANDED SERVICE COURT AND DRIVE

- SITE EXTENTS
- PLAY AREA
- EXISTING VISITOR PARKING



1" = 100'



EXISTING BUILDING FOOT-PRINT

FOOTPRINT OF NEW ELEVATED PARKING FOR STAFF (30 SPACES)

NEW DRIVEWAY TO S. QUINCY ST.



1" = 60'

LOWER LEVEL PARKING

ELEV. 165

- CIRCULATION
- STORAGE/CUST.
- BATHROOMS
- MECHANICAL
- ACADEMIC
- RESOURCE/SUPPORT
- LAB/STUDIO
- INFORMAL/FLEX
- GYM
- LOCKER
- PERFORMANCE ART
- LIBRARY
- DINING / KITCHEN
- FITNESS
- ADMINISTRATION

02.24.14

"NORTH BAR" SCHEME



NEW ELEVATED PARKING FOR STAFF (30 SPACES)

EXISTING DRIVEWAY TO SERVICE YARD



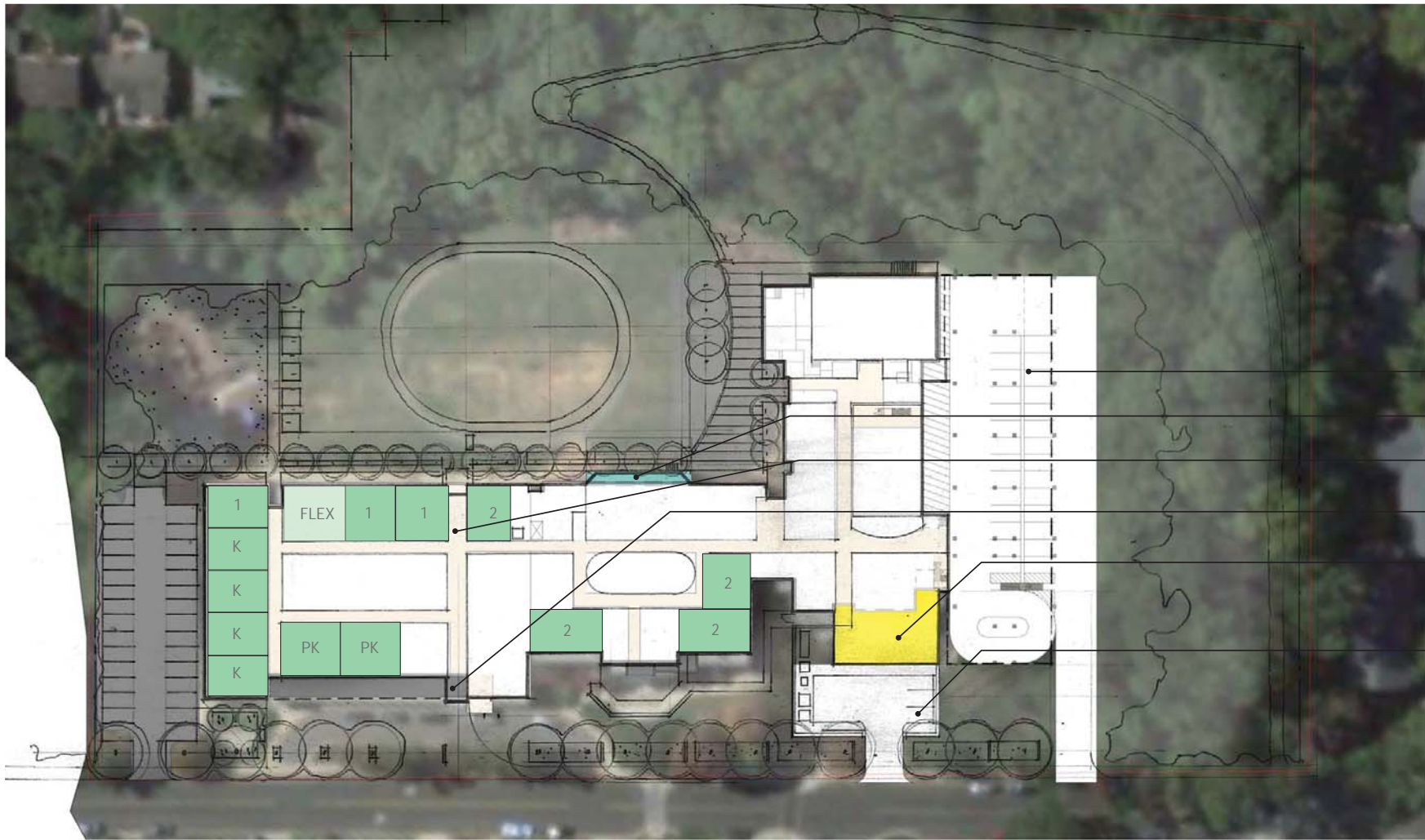
1" = 60'

MIDDLE LEVEL PARKING

ELEV. + 177

- CIRCULATION
- STORAGE/CUST.
- BATHROOMS
- MECHANICAL
- ACADEMIC
- RESOURCE/SUPPORT
- LAB/STUDIO
- INFORMAL/FLEX
- GYM
- LOCKER
- PERFORMANCE ART
- LIBRARY
- DINING / KITCHEN
- FITNESS
- ADMINISTRATION

*"NORTH BAR" SCHEME



- NEW ELEVATED PARKING
- RENOVATED LIBRARY
- NEW CIRCULATION PATH AND EXIT
- NEW ENTRY ADDITION (1000 SF)
- KITCHEN ADDITION (2500 SF)
- EXPANDED SERVICE COURT

N

 1" = 60'
 ENTRY LEVEL
 ELEV. + 189

| | | | | | | | | | | | | | | |
|-------------|---------------|-----------|------------|----------|------------------|------------|---------------|-----|--------|-----------------|---------|------------------|---------|----------------|
| CIRCULATION | STORAGE/CUST. | BATHROOMS | MECHANICAL | ACADEMIC | RESOURCE/SUPPORT | LAB/STUDIO | INFORMAL/FLEX | GYM | LOCKER | PERFORMANCE ART | LIBRARY | DINING / KITCHEN | FITNESS | ADMINISTRATION |
| | | | | | | | | | | | | | | |

02.03.14 "NORTH BAR" SCHEME



ROOF BELOW
 STAIR
 ELEVATED PARKING BELOW
 STAIR
 DRIVE AND SERVICE COURT BELOW

N
 1" = 60'
 FIRST LEVEL
 ELEV. + 203

- CIRCULATION
- STORAGE/CUST.
- BATHROOMS
- MECHANICAL
- ACADEMIC
- RESOURCE/SUPPORT
- LAB/STUDIO
- INFORMAL/FLEX
- GYM
- LOCKER
- PERFORMANCE ART
- LIBRARY
- DINING / KITCHEN
- FITNESS
- ADMINISTRATION

02.24.14 "NORTH BAR" SCHEME



02.24.14 "NORTH BAR" SCHEME, VIEW FROM NE



02.24.14 "NORTH BAR" SCHEME, VIEW FROM SW

VMDO ARCHITECTS

ADDITIONS & RENOVATIONS TO RANDOLPH ELEMENTARY SCHOOL

ARLINGTON PUBLIC SCHOOLS