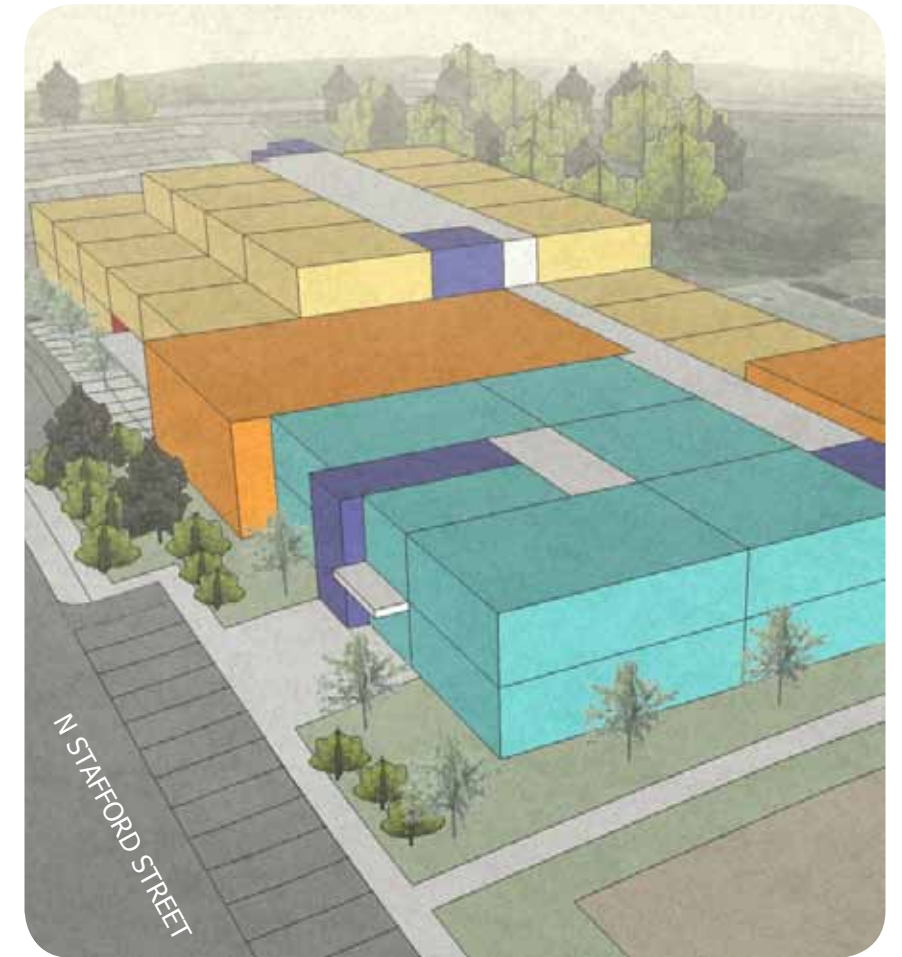
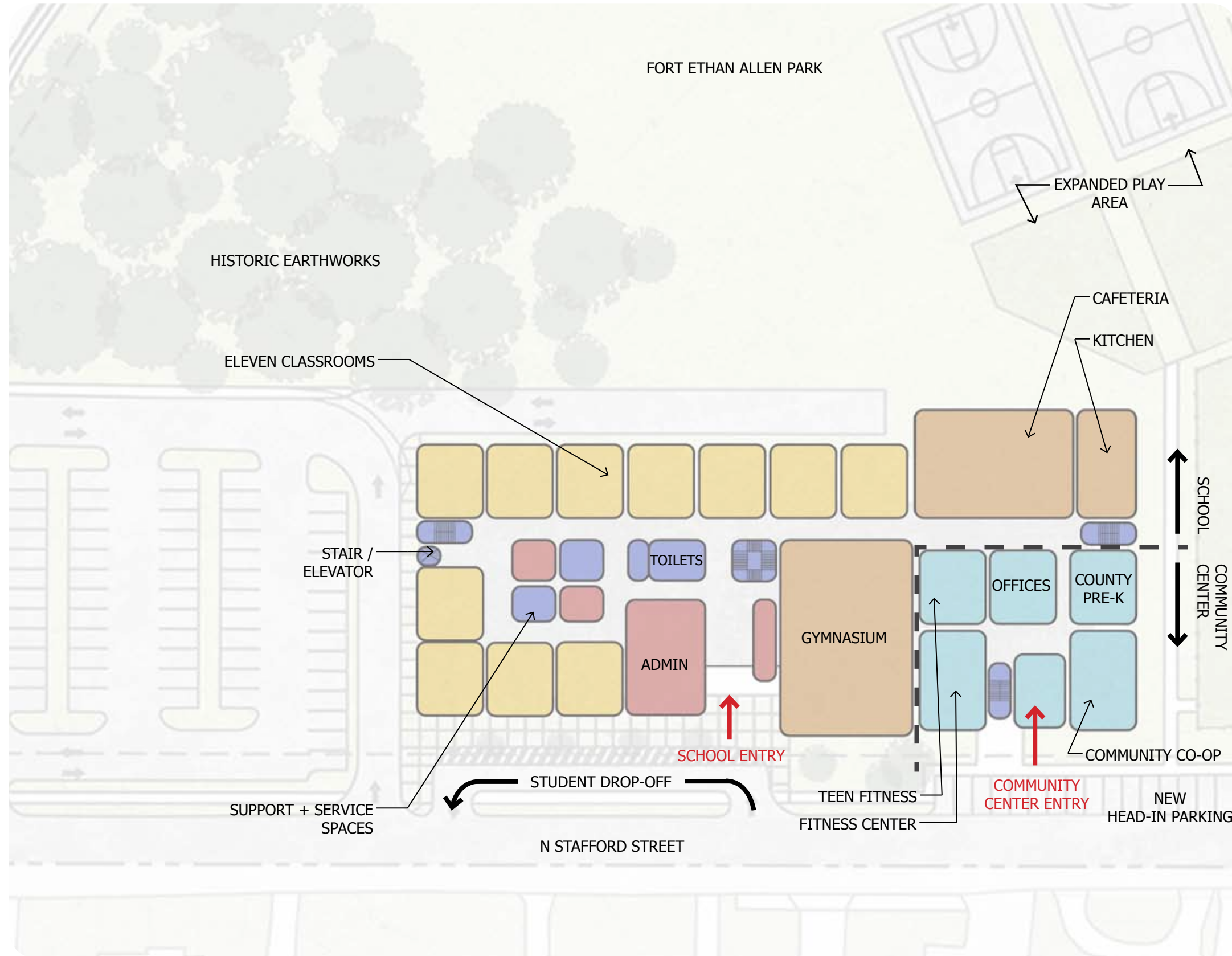


**NOTES:**

- PARTIAL FIRST FLOOR AT LOW POINT IN SITE TOPOGRAPHY
- ENTRY FROM BUS LOOP IS AT GRADE
- CREATES "FINE ARTS WING" FOR SCHOOL, ART ROOM HAS DIRECT VIEWS TO THE EXTERIOR DUE TO SLOPE IN TOPOGRAPHY



SCALE 1: 50



SHARED		COMMUNITY
CLASSROOM	CORE + SUPPORT	SERVICES

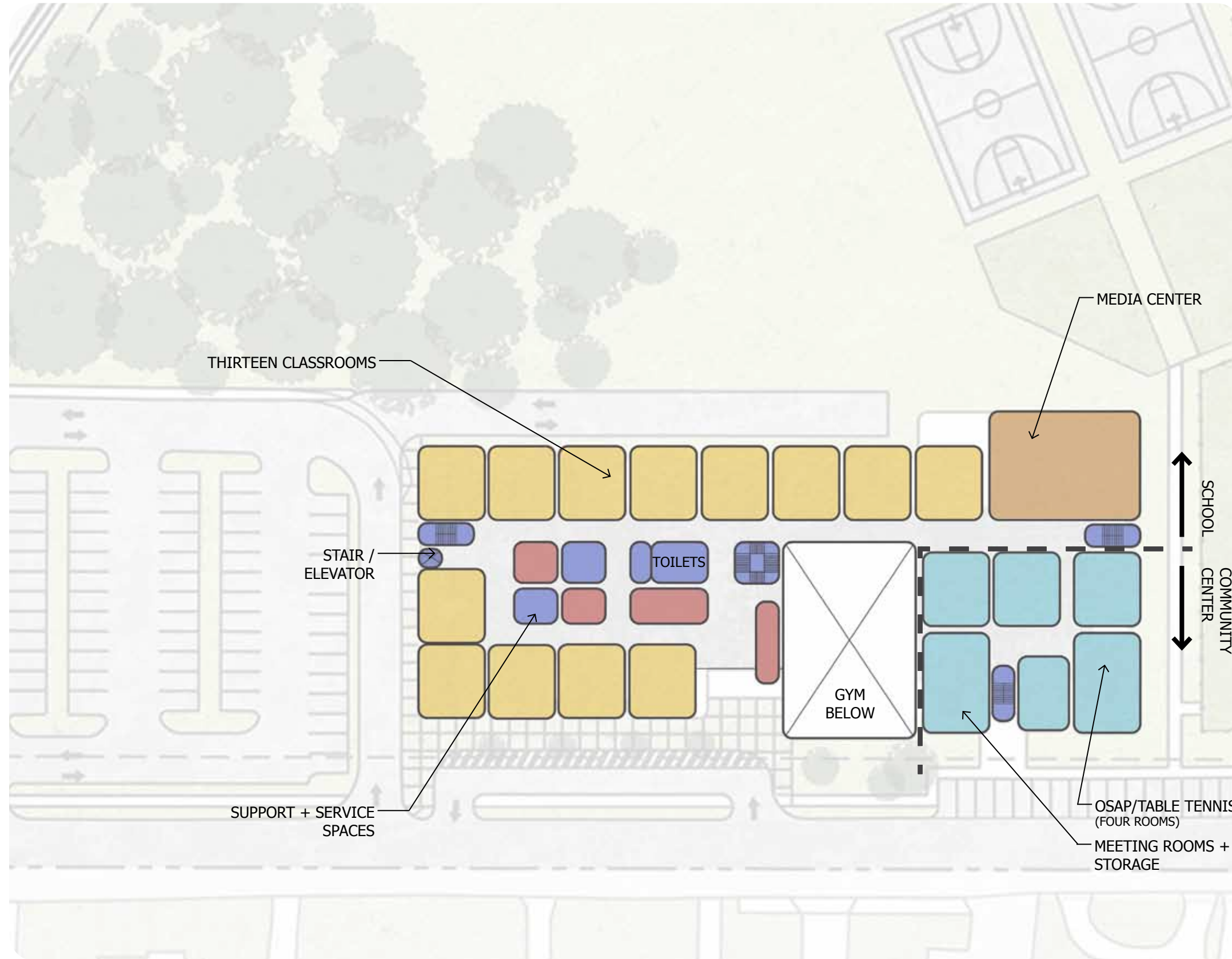
**NOTES:**

- COMMUNITY CENTER PROGRAM IS 16,400 SF AND ELEMENTARY SCHOOL IS 90,500 SF, TOTAL BUILDING IS 106,900 SF
- BOTH COMMUNITY CENTER AND SCHOOL ENTRIES ARE AT GRADE FROM N STAFFORD STREET
- OPPORTUNITY TO SHARE LARGE CORE SPACES, SUCH AS MEDIA CENTER, CAFETERIA AND GYM
- POSSIBILITY OF SHARING ADDITIONAL SCHOOL SPACES DEPENDING ON SCHOOL AGE GROUP



SCALE 1: 50





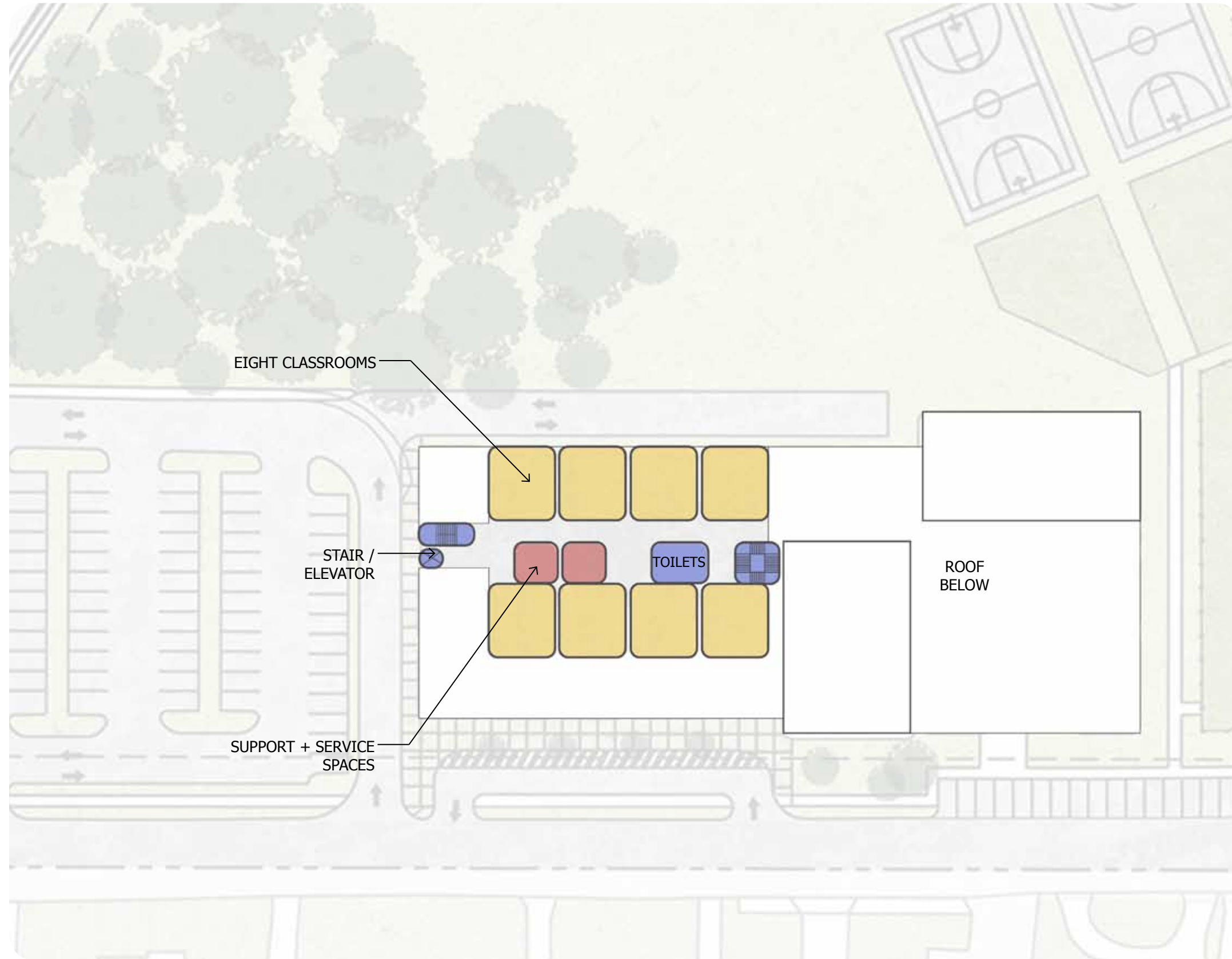
SHARED		COMMUNITY
CLASSROOM	CORE + SUPPORT	SERVICES

**NOTES:**

- THIRD FLOOR OVER SCHOOL AND COMMUNITY CENTER
- TWO STORIES ABOVE GRADE AT N STAFFORD STREET

N

SCALE 1: 50



**NOTES:**

- TIERED FOURTH FLOOR STEPS BACK AT THE STREET FACE OF THE BUILDING



SCALE 1: 50