

# Thomas Jefferson Middle School



**Perkins Eastman**

ARLINGTON PUBLIC SCHOOLS  
FEASIBILITY STUDY  
NOVEMBER 2011

# Thomas Jefferson Middle School

The Thomas Jefferson Middle School site presents the opportunity to expand the existing building. The current middle school features an International Baccalaureate program and houses approximately 670 students. The existing school could expand to an enrollment of approximately 900 and with additions enrollment could potentially be increased beyond 900. The school building also features a large community center and gym and is adjacent to County properties featuring a large park and parking, both used by the school and the community. The proposed addition concept for the middle school:

- Expands the existing building providing new indoor/outdoor teaching spaces for the arts adjacent to the theater on under utilized site area on APS property;
- Creates a new civic presence and front door for the school on 2nd Street S. and S. Old Glebe Road that also visually screens the existing loading docks;
- Creates a new day lit food service/multi-purpose room convenient to the loading dock;
- Enables the expansion of the grade-level houses into the vacated art and food service spaces within the existing building.

As shown in the concept the site would allow for an addition of approximately 30,000 GSF bringing the total area of the existing middle school building to approximately 250,000 GSF on APS property. In addition to accommodating additional enrollment in the existing middle school, the concept would also be able to support APS' sustainable, high performance building goals. For example, mechanical options for the site include the potential to utilize a ground source heat pump system to expand the existing building. Photovoltaics could also be integrated using a Power Purchase Agreement. Further due diligence investigation of these sites would include geotechnical engineering to determine subsurface soil bearing capacity.



Middle School main entrance



View towards Middle School main entrance from parking lot



Proposed Location for new Main Entrance Addition

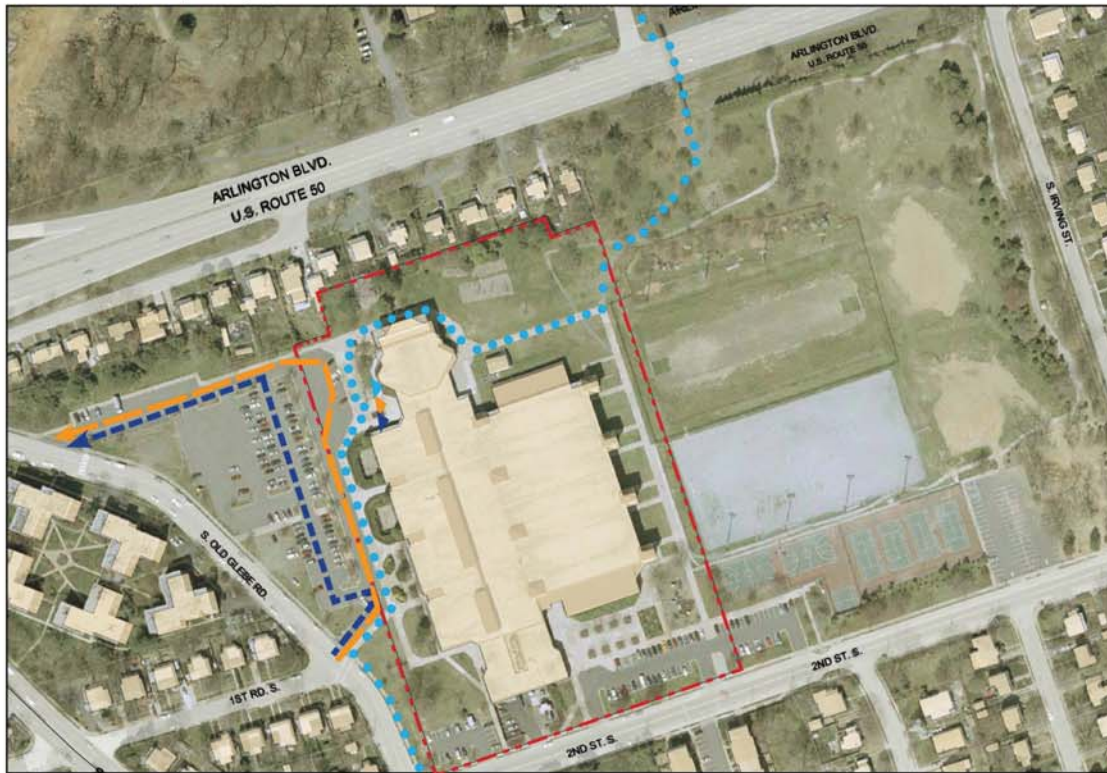


Location of proposed Arts Addition

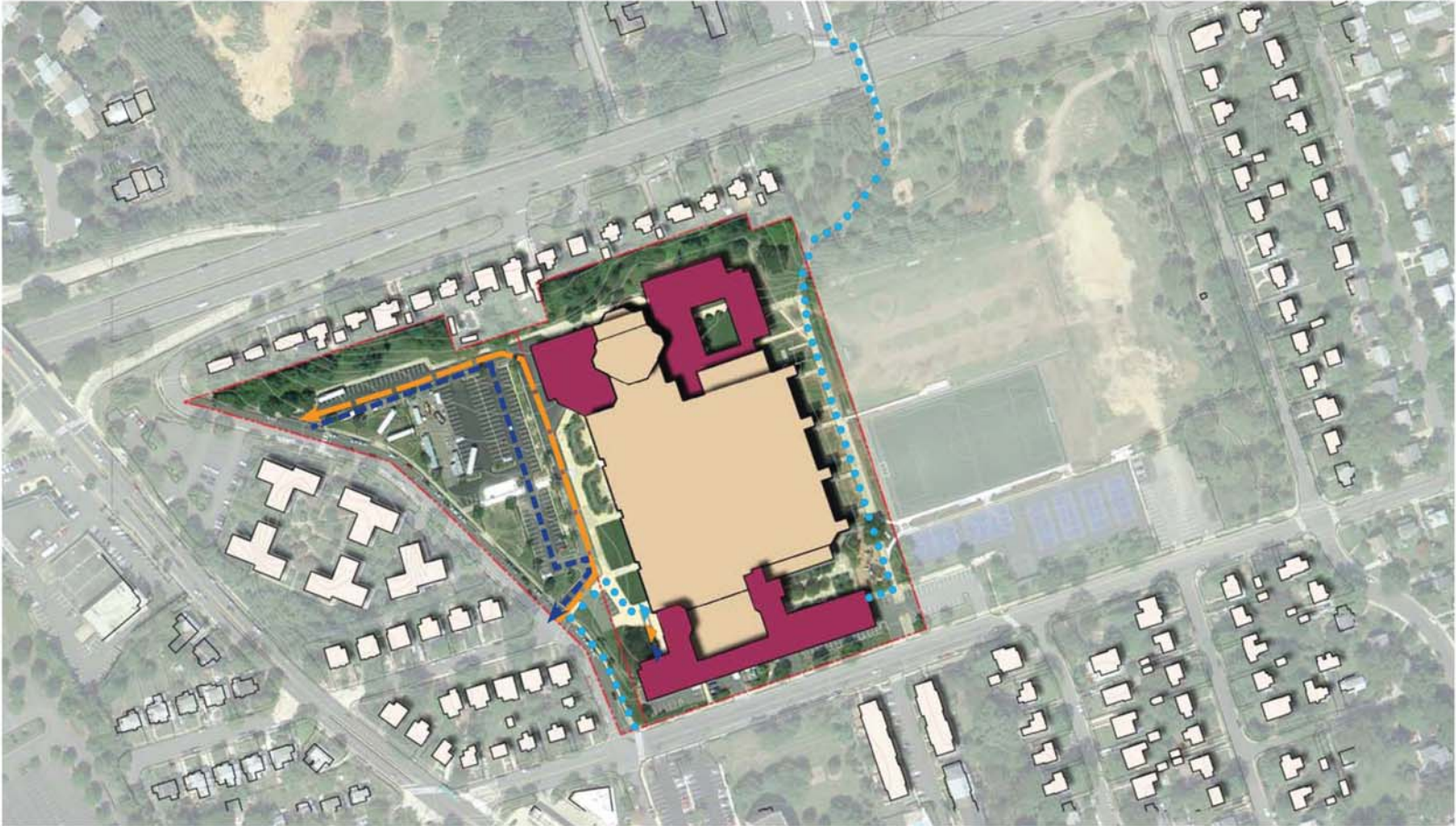
# Thomas Jefferson Middle School

	Building Sq.Ft.	School Site Sq. Ft.	Building Footprint Sq.Ft.	Playground Sq. Ft.	Play Field Sq. Ft.	Blacktop Sq. Ft.	Parking Sq. Ft.	Parking Spaces	Relocatable Sq. Ft.	Open Area Sq. Ft.
Existing	219,070	406,814	159,953	-	-	-	116,000**	200**	864**	212,265**
Proposed	161,746	-	77,125	-	-	-	-6,326 SF -11,933 SF +1,200 SF	-23 Spaces (from Corner Lot) -33 Spaces (from Community Center) +5 Spaces (at New School Entrance)		

\*\* Estimates based on aerial photographs  
 \*\*\* new accessible parking spaces



# Thomas Jefferson Middle School



- EXISTING
- RENOVATION
- NEW
- BUS LOOP
- PARENT DROP OFF/ PICK UP
- PEDESTRIAN

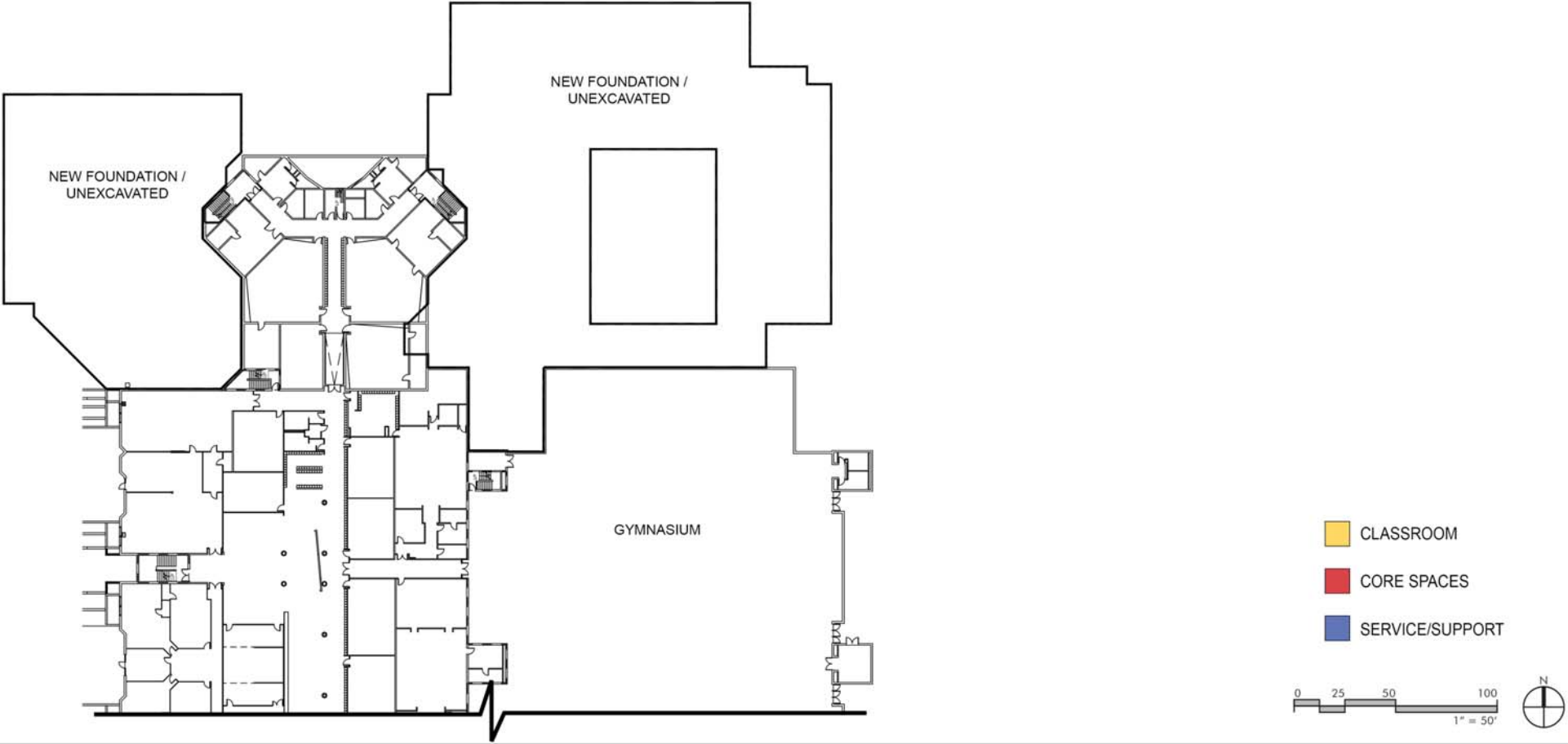


**Perkins Eastman**

**ILLUSTRATIVE PLAN**

**ARLINGTON PUBLIC SCHOOLS  
FEASIBILITY STUDY  
NOVEMBER 2011**

# Thomas Jefferson Middle School

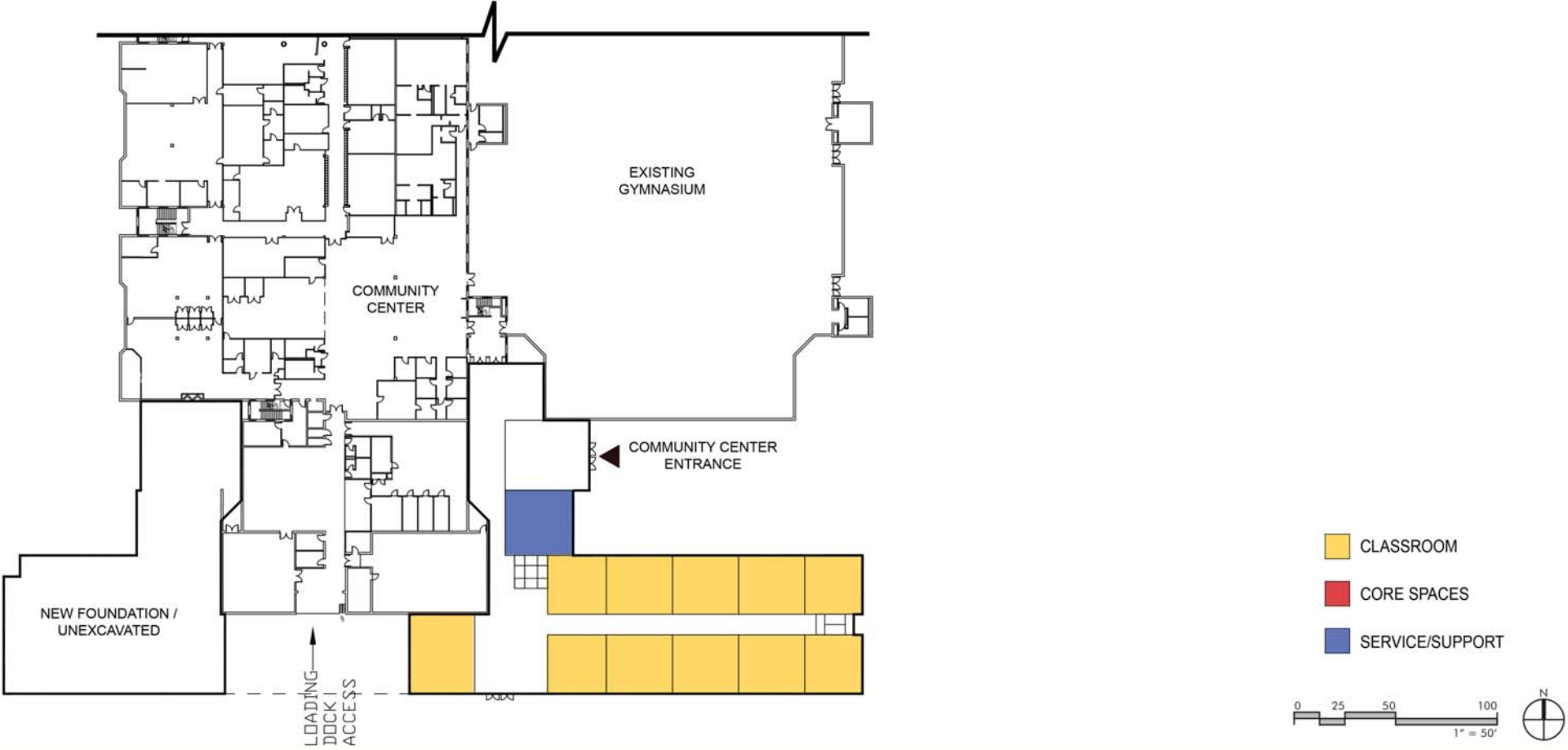


**Perkins Eastman**

FIRST FLOOR PLAN - North

ARLINGTON PUBLIC SCHOOLS  
FEASIBILITY STUDY  
NOVEMBER 2011

# Thomas Jefferson Middle School



# Thomas Jefferson Middle School



**Perkins Eastman**

**SECOND FLOOR PLAN - North**

ARLINGTON PUBLIC SCHOOLS  
FEASIBILITY STUDY  
NOVEMBER 2011

# Thomas Jefferson Middle School



- CLASSROOM
- CORE SPACES
- SERVICE/SUPPORT





# Thomas Jefferson Middle School



- CLASSROOM
- CORE SPACES
- SERVICE/SUPPORT

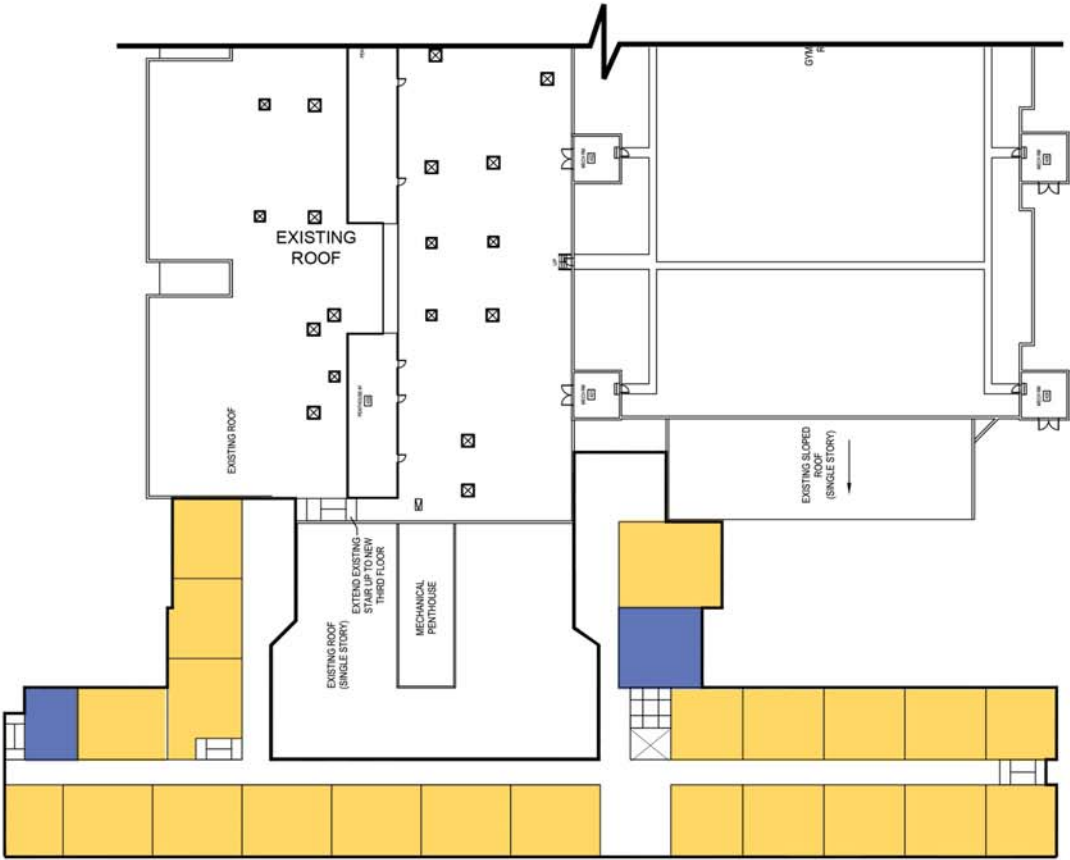


Perkins Eastman

THIRD FLOOR PLAN - North

ARLINGTON PUBLIC SCHOOLS  
FEASIBILITY STUDY  
NOVEMBER 2011

# Thomas Jefferson Middle School



- CLASSROOM
- CORE SPACES
- SERVICE/SUPPORT



# Thomas Jefferson Middle School



**Perkins Eastman**

**3-D IMAGE**

ARLINGTON PUBLIC SCHOOLS  
FEASIBILITY STUDY  
NOVEMBER 2011