

# CARLIN SPRINGS ELEMENTARY SCHOOL / KENMORE MIDDLE SCHOOL



PROVIDE MULTIPLE ADDITIONS TO KENMORE MIDDLE SCHOOL

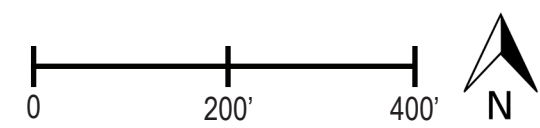
RECONFIGURE PARENT DROP-OFF LOOP

UPGRADE FIELD

PLANT NEW SPECIMEN TREES TO REINFORCE CONNECTING PATH

PROVIDE MULTIPLE ADDITIONS TO CARLIN SPRINGS ELEMENTARY SCHOOL

- EXISTING BUILDING
- RENOVATION
- ADDITION
- CLASSROOM



1:200

ARLINGTON PUBLIC SCHOOLS



# CARLIN SPRINGS ELEMENTARY SCHOOL / KENMORE MIDDLE SCHOOL



PROVIDE MODEST ADDITIONS TO KENMORE MIDDLE SCHOOL - NO NET CHANGE IN CAPACITY

RE-ORIENT AND UPGRADE FIELD AS AN ORGANIZING ELEMENT BETWEEN MIDDLE SCHOOL & NEW SCHOOL

BUILD NEW SCHOOL (CAPACITY = 650 STUDENTS) FOR EITHER UPPER ELEMENTARY OR LOWER MIDDLE SCHOOL

IMPROVE EXISTING BUS LOOP; SHARE WITH NEW SCHOOL

PROVIDE MODEST ADDITION TO CARLIN SPRINGS ELEMENTARY SCHOOL - NO NET CHANGE IN CAPACITY

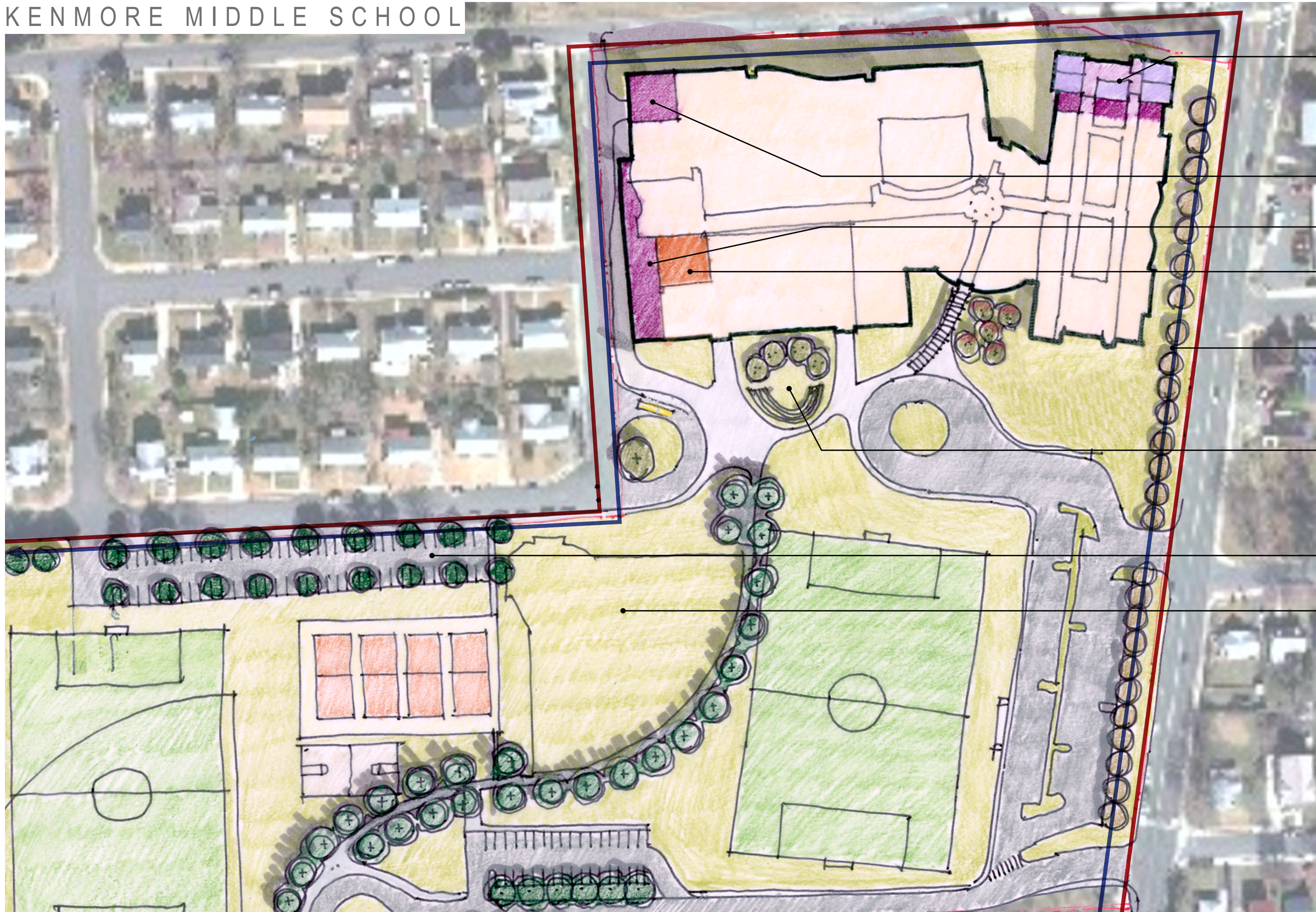
- EXISTING BUILDING
- RENOVATION
- ADDITION
- CLASSROOM



1:200

ARLINGTON PUBLIC SCHOOLS





• ZONING: S-3A

(3) STORY NORTH CLASSROOM ADDITION, 21,000 GSF. SCARIFICE EXISTING DROP-OFF ROUTE. REQUIRES MINOR RELOCATION OF STORM LINES

(1) STORY KITCHEN ADDITION, 2,500 GSF

(1) STORY COMMONS ADDITION WITH CANOPY, 3,600 GSF

RENOVATE EXISTING SPACE FOR COMMONS EXPANSION, 6,600 GSF

REQUIRED SETBACKS

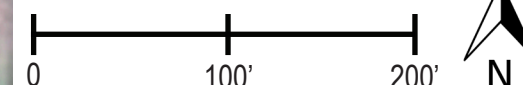
RECONFIGURE OUTDOOR AMPITHEATER

POSSIBLE ADDITIONAL PARKING (60 SPACES)

BASEBALL FIELD TO REMAIN

• NO APPARENT WETLANDS, NO RESOURCE PROTECTION AREA

- EXISTING BUILDING
- RENOVATION
- ADDITION
- CLASSROOM

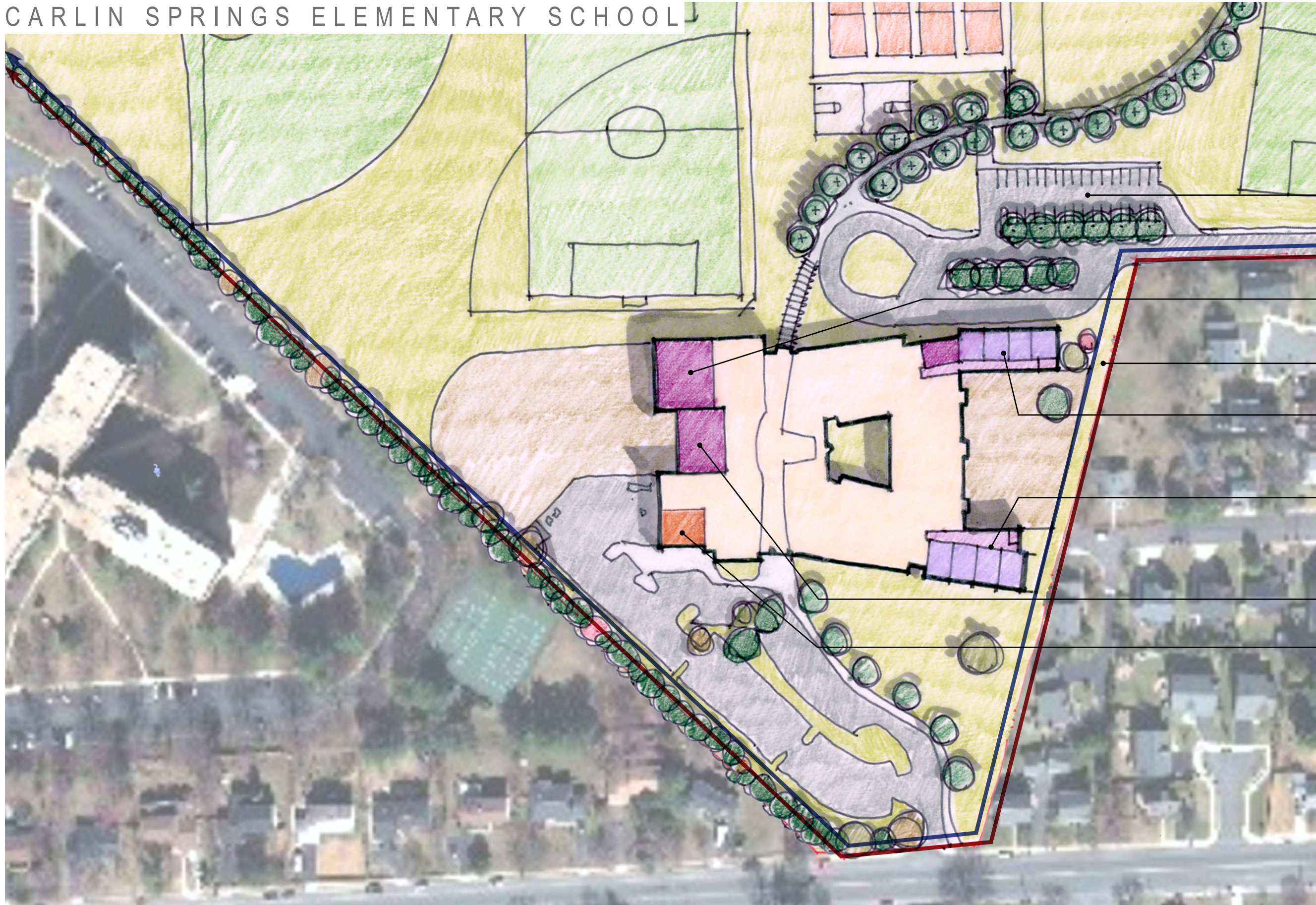


1:100

ARLINGTON PUBLIC SCHOOLS



# CARLIN SPRINGS ELEMENTARY SCHOOL



- ZONING: S-3A
- NO APPARENT WETLANDS, NO RESOURCE PROTECTION AREA

POSSIBLE ADDITIONAL PARKING (35 SPACES)

(1) STORY GYMNASIUM ADDITION 5,000 GSF

REQUIRED SETBACKS

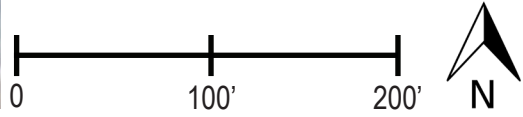
(2) STORY NORTH CLASSROOM ADDITION, 12,000 GSF. REQUIRES MINOR RELOCATION OF SANITARY & STORM LINES

(2) STORY SOUTH CLASSROOM ADDITION, 12,000 GSF. REQUIRES MINOR RELOCATION OF STORM LINE

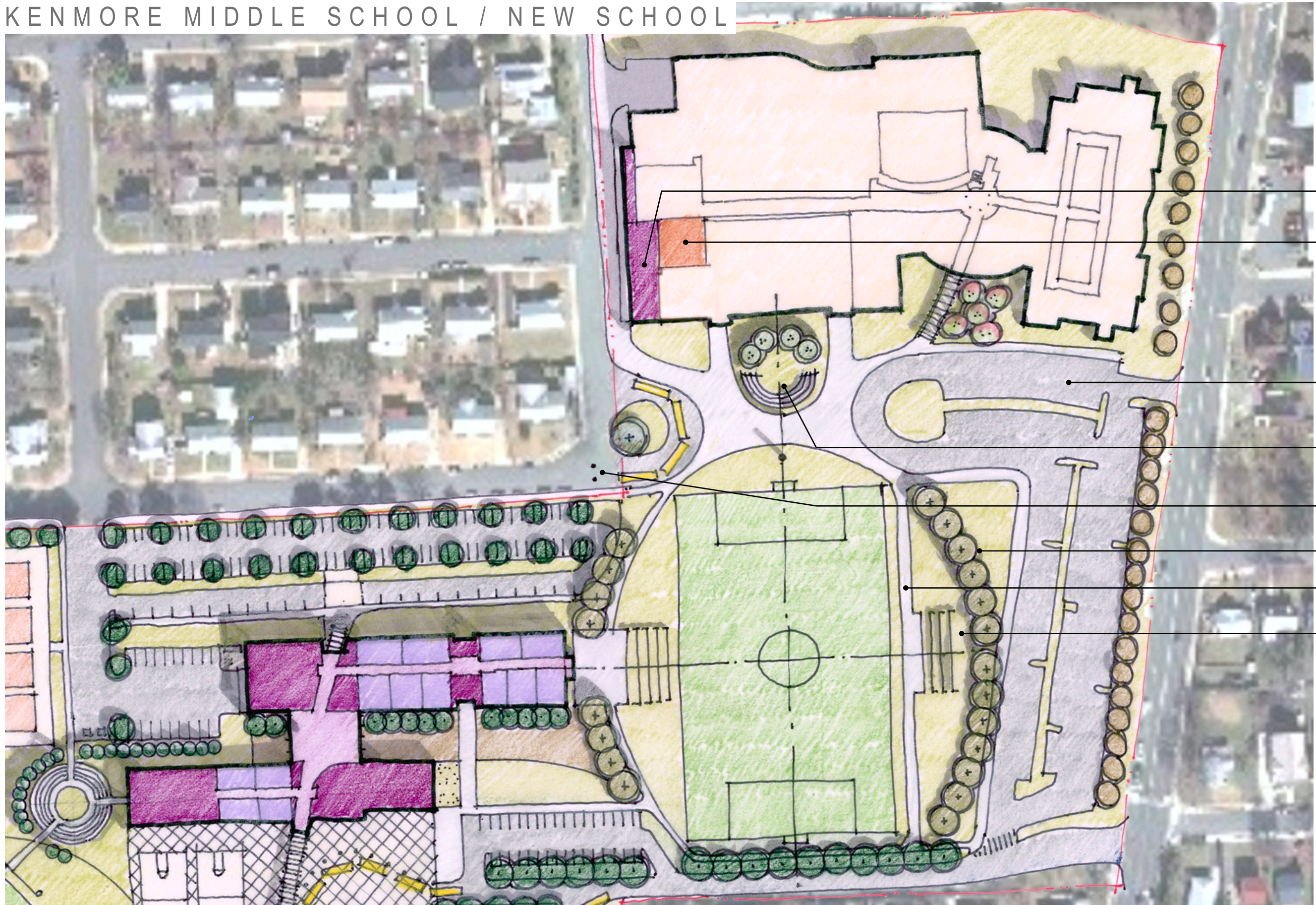
(1) STORY CAFETERIA EXPANSION, 3,000 GSF

KITCHEN EXPANSION 1,000 GSF

- EXISTING BUILDING
- RENOVATION
- ADDITION
- CLASSROOM







(1) STORY COMMONS ADDITION WITH CANOPY, 3,600 GSF

RENOVATE EXISTING SPACE FOR COMMONS EXPANSION, 1,600 GSF

RECONFIGURE PARENT DROP-OFF

RECONFIGURE OUTDOOR AMPITHEATER

EXISTING TRAFFIC CONTROL BOLLARDS TO REMAIN

SPECIMEN TREES

PERIMETER WALKING PATH

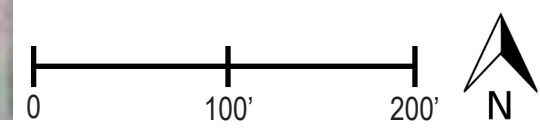
STEPPED CONCRETE RISERS WITH TURF INFILL

EXISTING BUILDING

RENOVATION

ADDITION

CLASSROOM

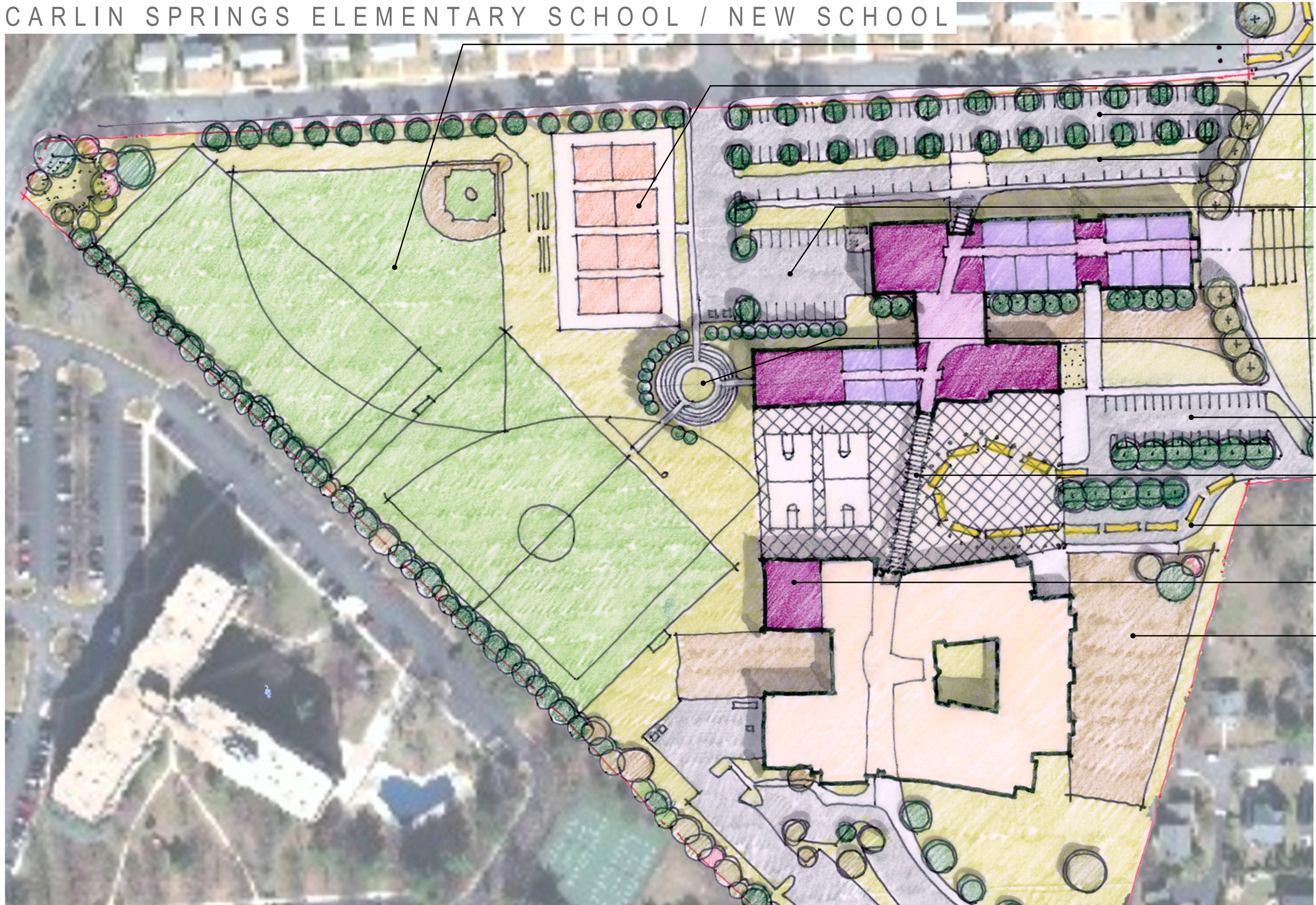


1:100

ARLINGTON PUBLIC SCHOOLS

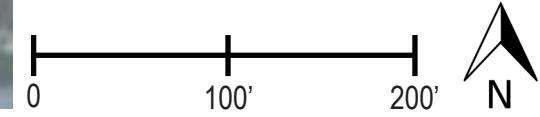


# CARLIN SPRINGS ELEMENTARY SCHOOL / NEW SCHOOL

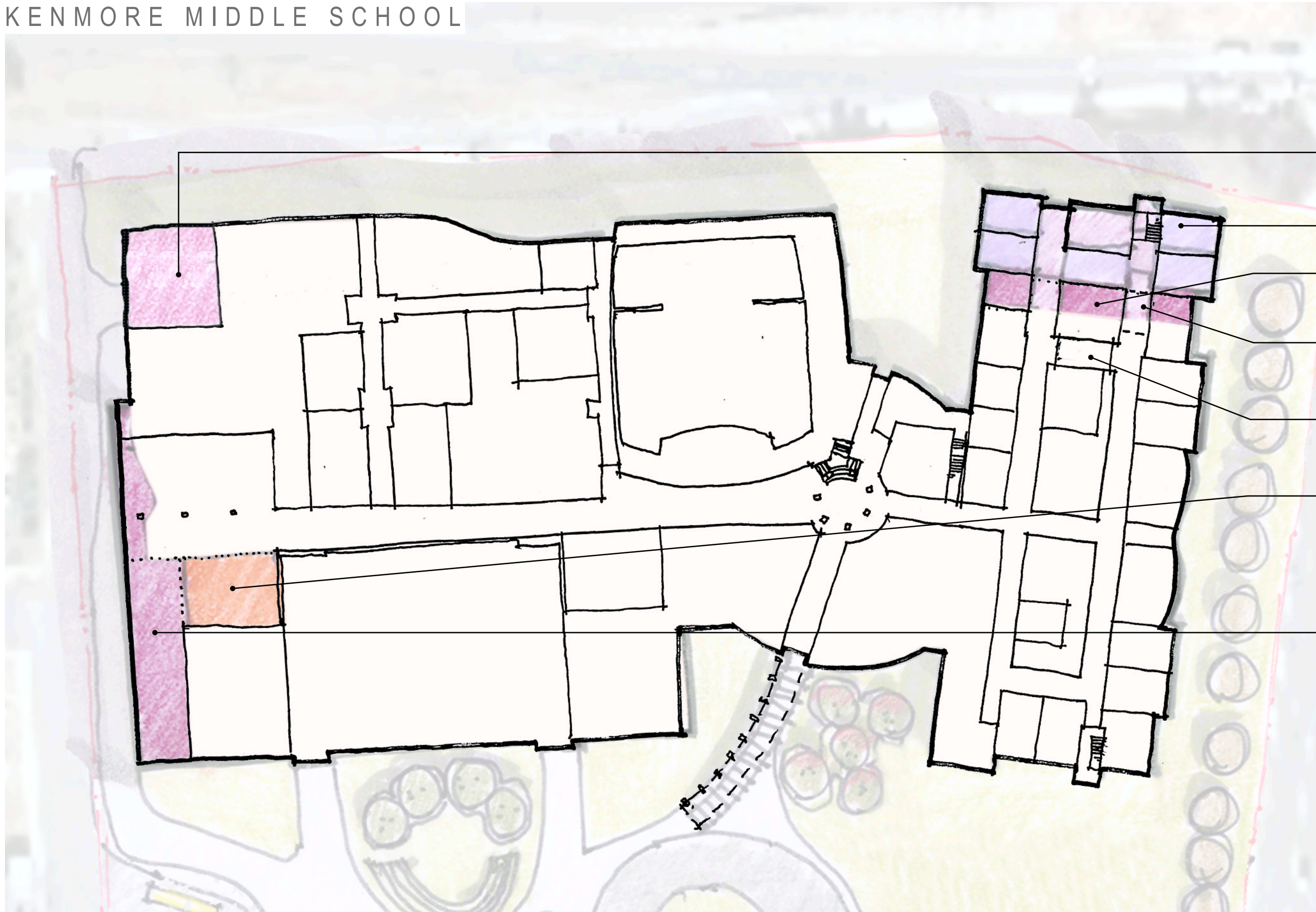


- RELOCATE VARIOUS FIELDS
- RELOCATE TENNIS COURTS
- NEW SCHOOL STAFF/VISITOR PARKING (80 SPACES)
- NEW SCHOOL DROP-OFF LOOP (22 SPACES) AT MAIN ENTRANCE
- RECEIVING/MECH. YARD (10 SPACES)
- OUTDOOR AMPITHEATER
- NEW OVERFLOW PARKING (35 SPACES)
- CONNECTING COVERED PASSAGE
- SHARED BUS LOOP CAPACITY = 14 BUSES
- (1) STORY GYM ADDITION 5,000 GSF
- RESTORE PLAY AREA AFTER RELOCATABLE REMOVAL

- EXISTING BUILDING
- RENOVATION
- ADDITION
- CLASSROOM







2,500 SF KITCHEN ADDITION

(5) NEW CLASSROOMS  
5,000 SF TOTAL

SACRIFICE (1) EXISTING  
CLASSROOM FOR NEW GROUP  
TOILETS & DELETE DATA CLOSET

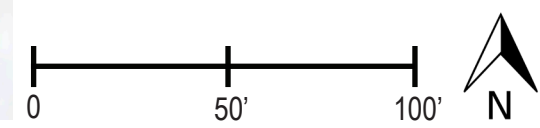
RECONFIGURE AREA OF  
FORMER STAIR

INFILL EXISTING CORRIDOR

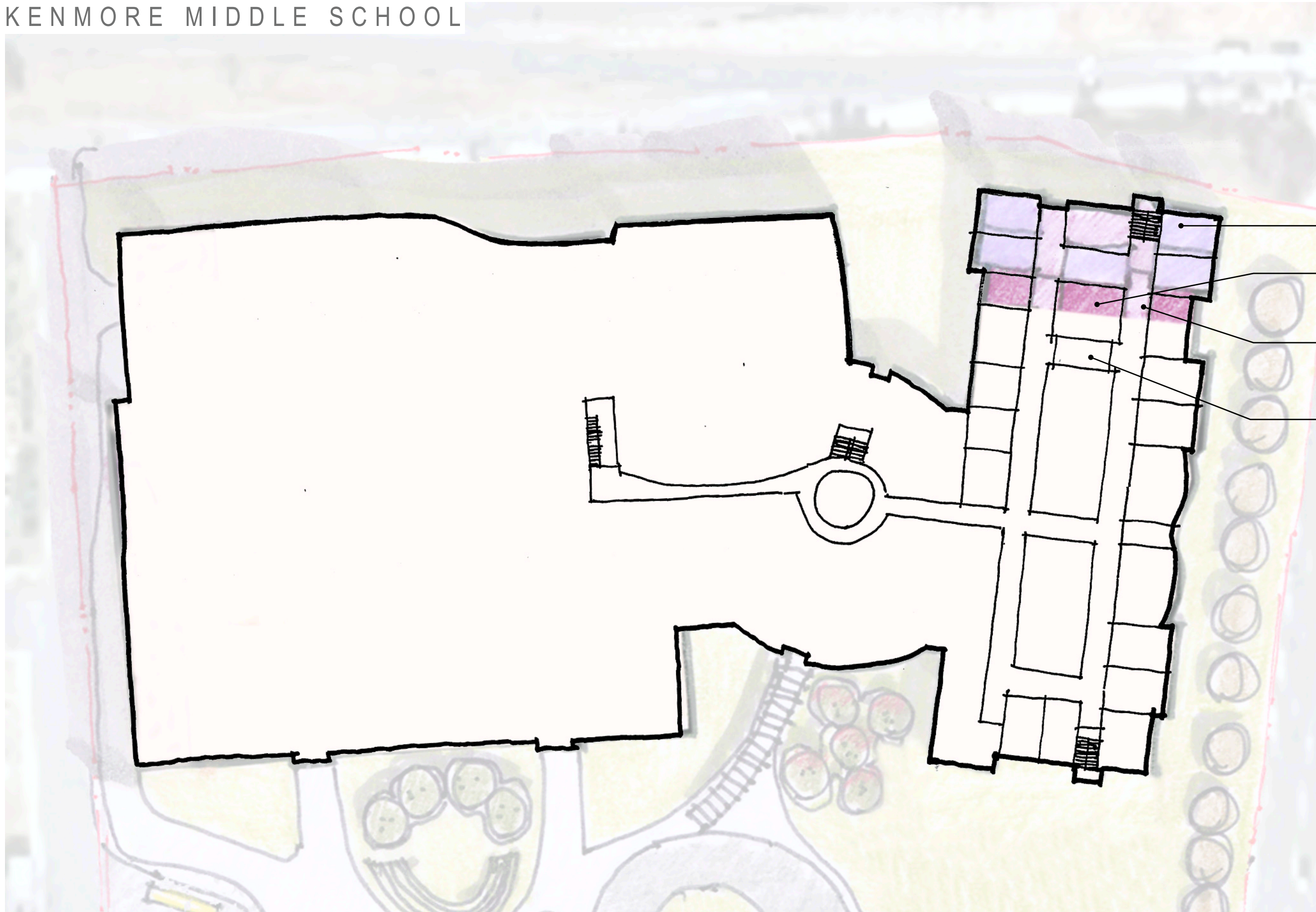
SACRIFICE (1) EXISTING  
WELLNESS CLASSROOM FOR  
EXPANDED CAFETERIA  
(1,750 SF RENOVATION)

3,000 SF CAFETERIA ADDITION

- EXISTING BUILDING
- RENOVATION
- ADDITION
- CLASSROOM

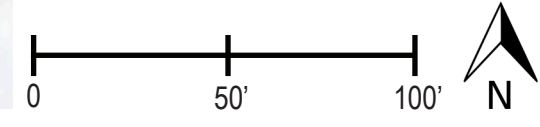




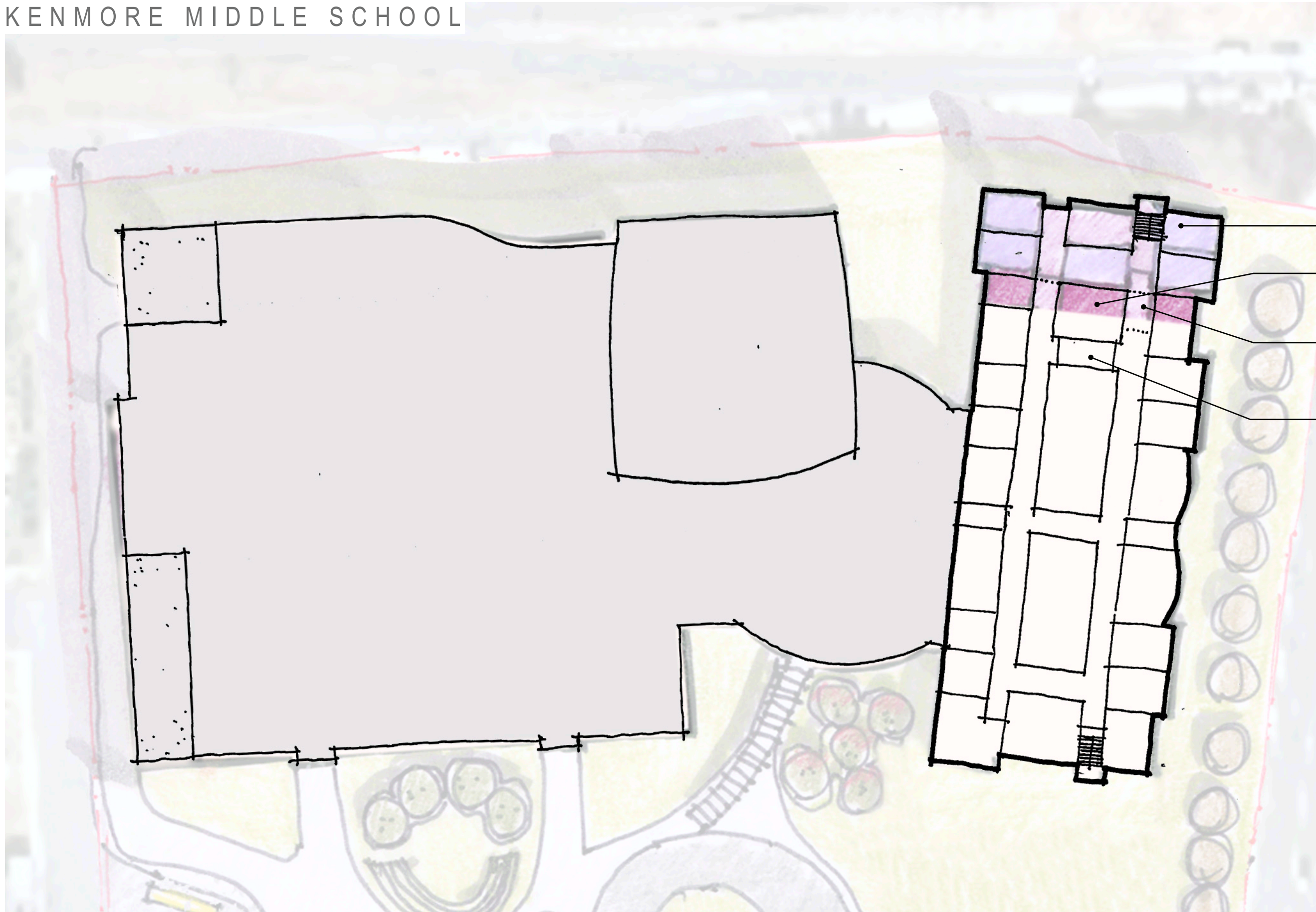


- (5) NEW CLASSROOMS  
5,000 SF TOTAL
- SACRIFICE (1) EXISTING  
CLASSROOM FOR NEW GROUP  
TOILETS & DELETE DATA CLOSET
- RECONFIGURE AREA OF  
FORMER STAIR
- INFILL EXISTING CORRIDOR

- EXISTING BUILDING
- RENOVATION
- ADDITION
- CLASSROOM

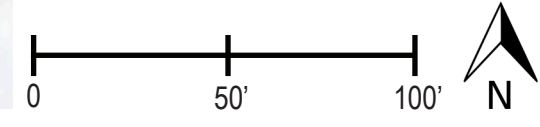






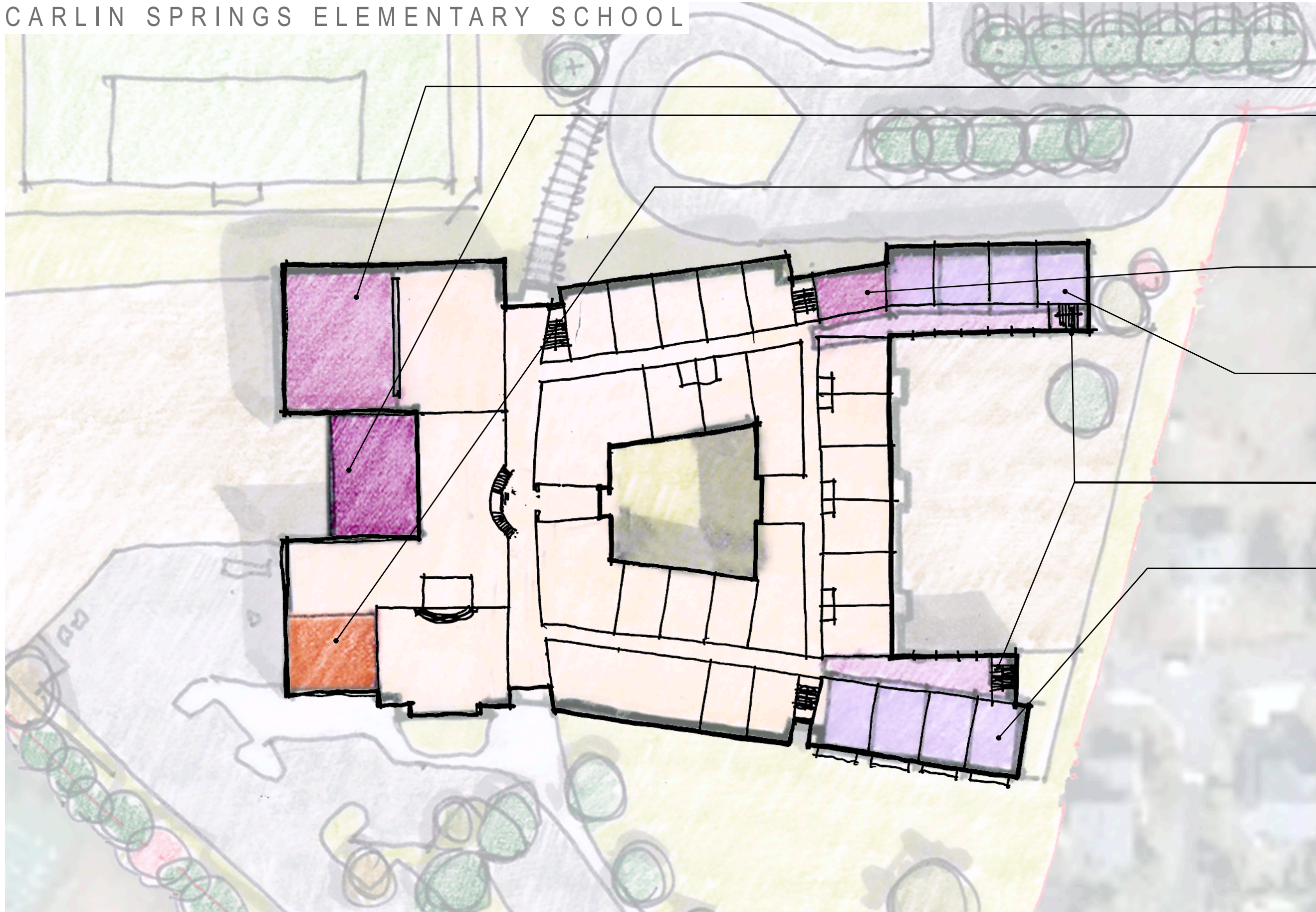
- (5) NEW CLASSROOMS  
5,000 SF TOTAL
- SACRIFICE (1) EXISTING  
CLASSROOM FOR NEW GROUP  
TOILETS & DELETE DATA CLOSET
- RECONFIGURE AREA OF  
FORMER STAIR
- INFILL EXISTING CORRIDOR

- EXISTING BUILDING
- RENOVATION
- ADDITION
- CLASSROOM



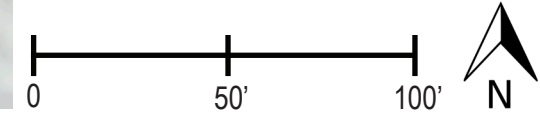


# CARLIN SPRINGS ELEMENTARY SCHOOL

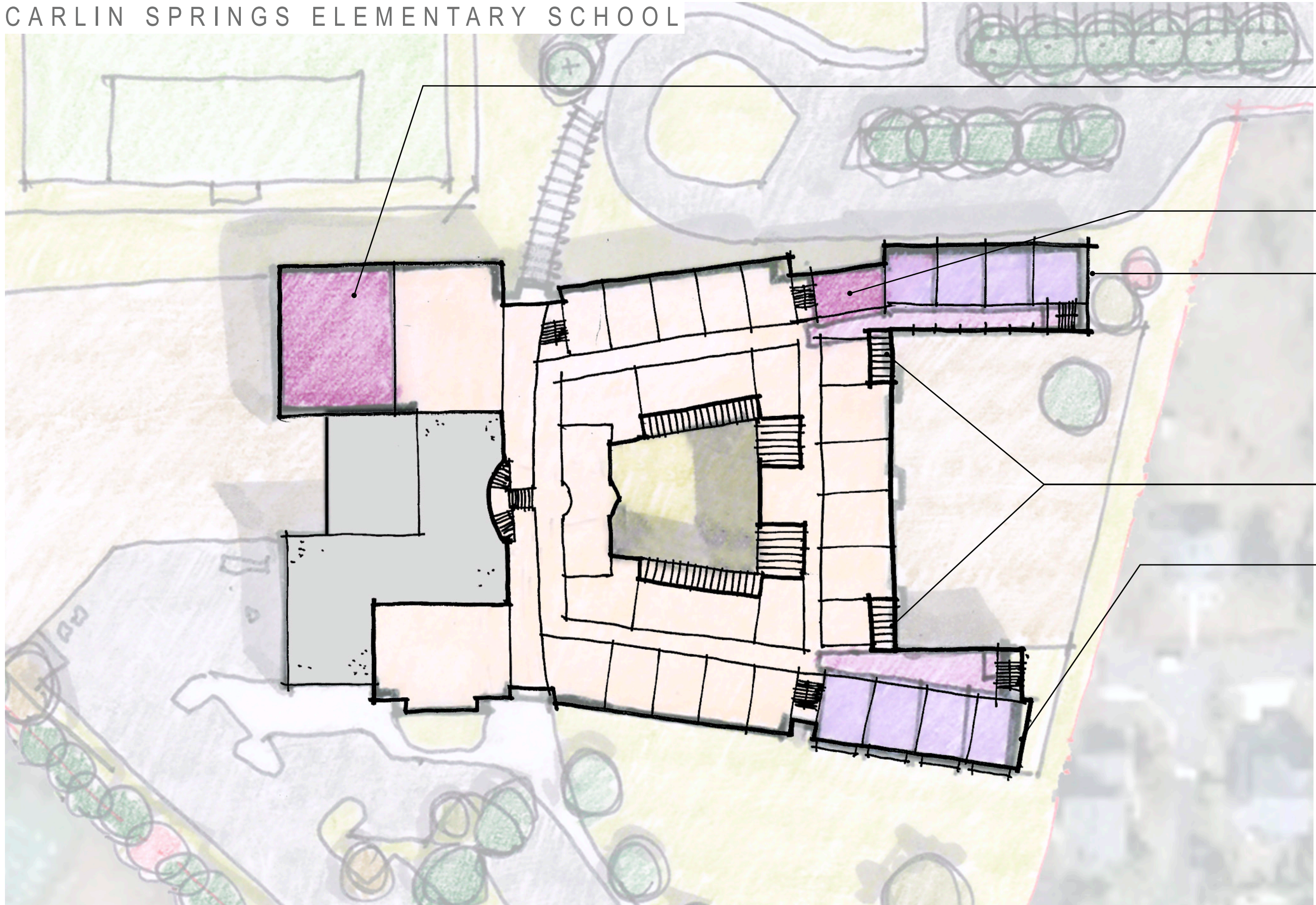


- (1) STORY GYM ADDITION  
5,000 SF
- POSSIBLE KITCHEN ADDITION TO  
SERVE THIRD SCHOOL AS  
SATELLITE FOOD PREP.
- RENOVATE EXISTING KITCHEN
- NEW BOYS/GIRLS GROUP  
TOILETS.
- (2) STORY NORTH  
CLASSROOM ADDITION  
6,000 SF THIS FLOOR  
(4) CLASSROOM THIS FLOOR
- NEW EGRESS STAIRS (TYP.)
- (2) STORY SOUTH  
CLASSROOM ADDITION  
6,000 SF THIS FLOOR  
(4) CLASSROOM THIS FLOOR

- EXISTING BUILDING
- RENOVATION
- ADDITION
- CLASSROOM







DOUBLE HEIGHT GYM ADDITION

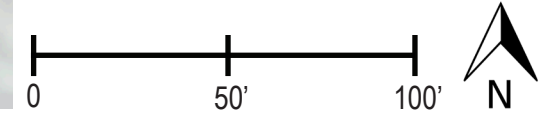
NEW BOYS/GIRLS GROUP TOILETS.

(2) STORY NORTH CLASSROOM ADDITION  
6,000 SF THIS FLOOR  
(4) CLASSROOM THIS FLOOR

RE-WORK EXISTING SLOPED ROOF AREA AT JUNCTURE WITH ADDITIONS (TYP.)

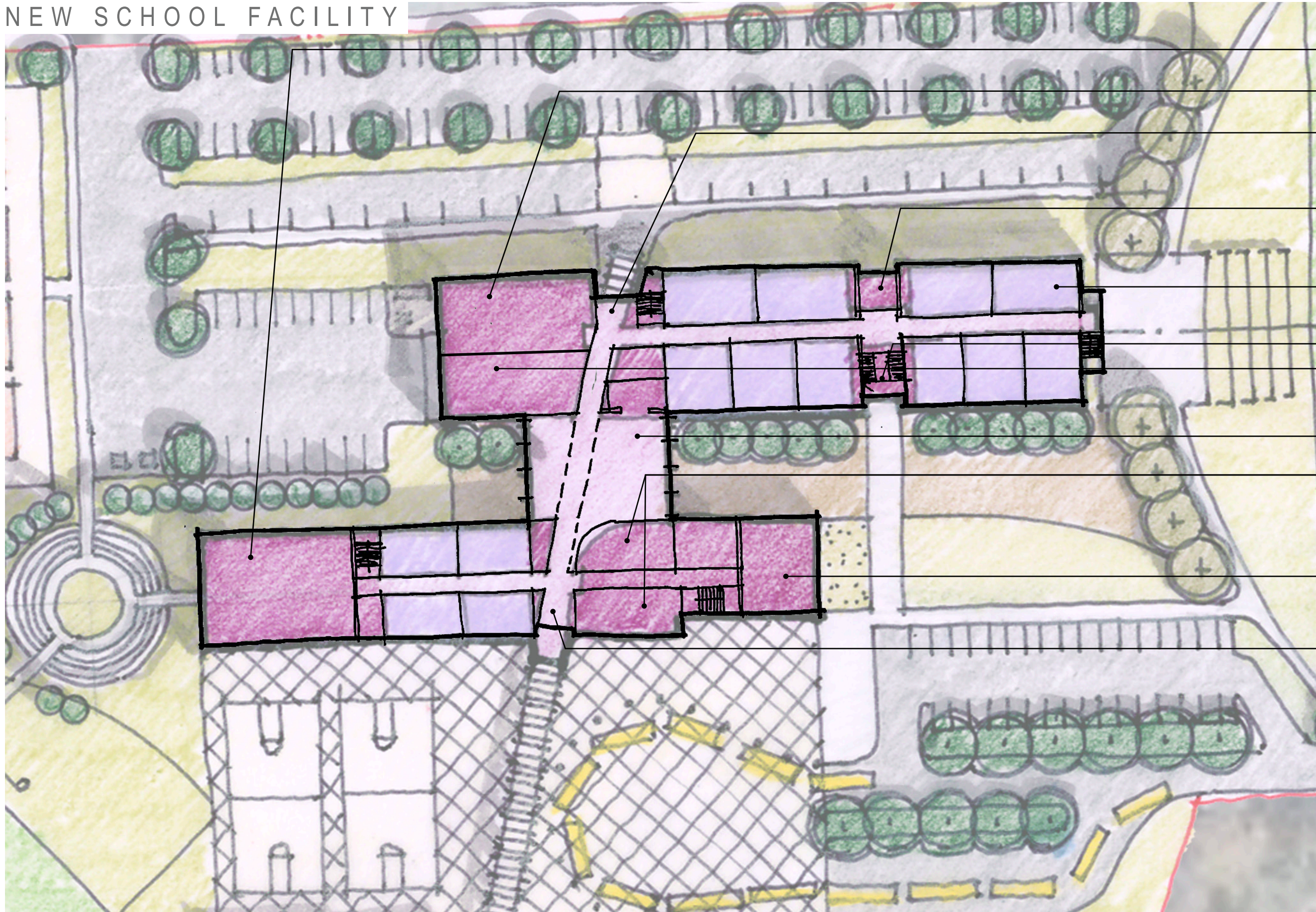
(2) STORY SOUTH CLASSROOM ADDITION  
6,000 SF THIS FLOOR  
(4) CLASSROOM THIS FLOOR

- EXISTING BUILDING
- RENOVATION
- ADDITION
- CLASSROOM



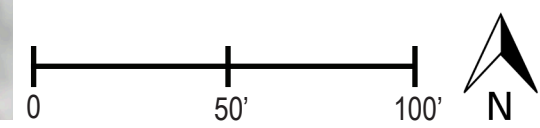


# NEW SCHOOL FACILITY



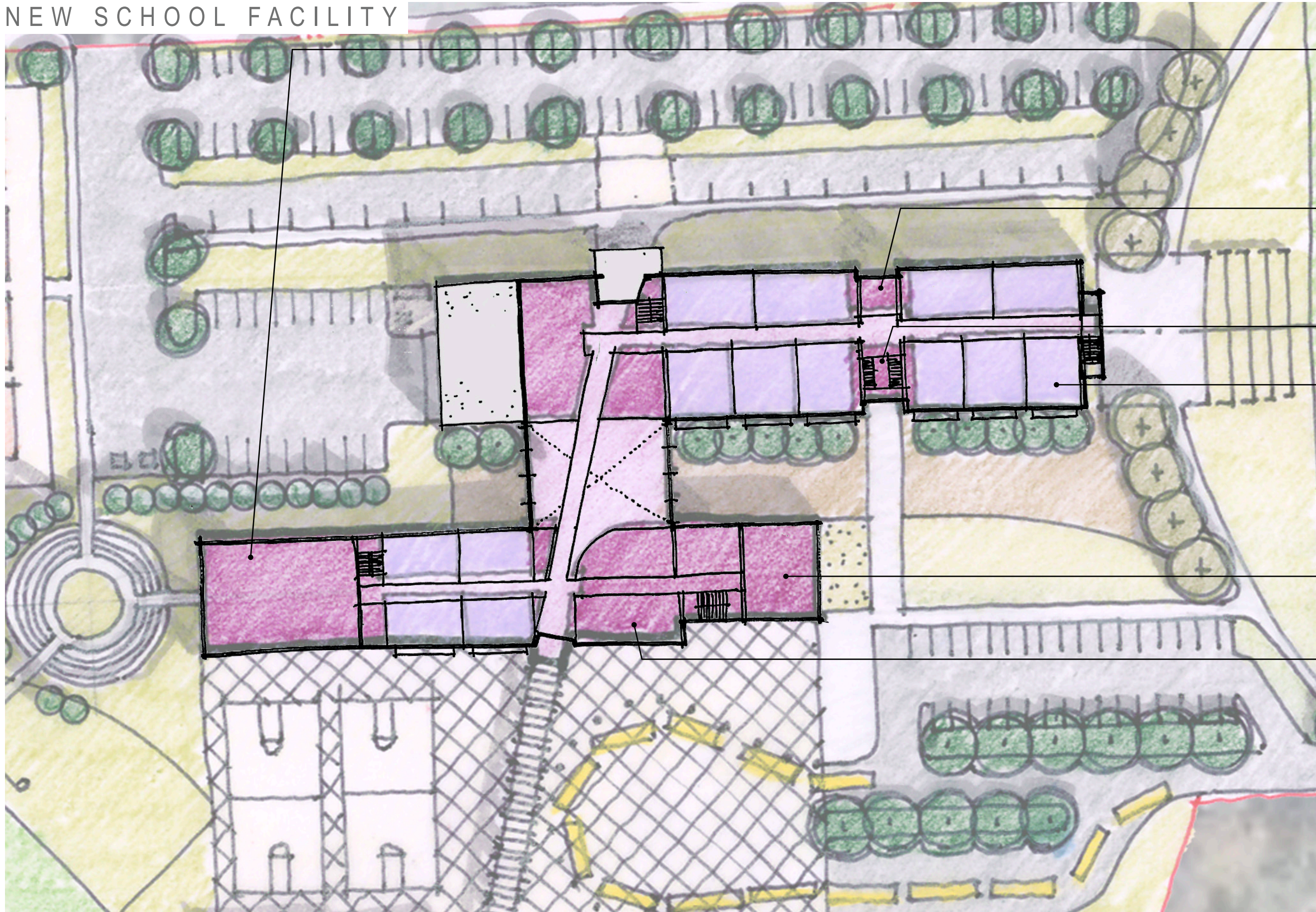
- GYMNASIUM
- ADMINISTRATIVE SUITE
- ENTRY LOBBY / CHECKPOINT
- FACULTY OFFICES
- LOWER GRADES
- COMMUNICATING STAIR
- KITCHEN / SERVERY
- COMMONS
- ARTS & SCIENCE SUITES
- LIBRARY (ON GROUND FLOOR FOR EASE OF COMMUNITY ACCESS.)
- STUDENT ENTRY FROM SHARED BUS PLAZA

- CORE
- CLASSROOM





# NEW SCHOOL FACILITY



DOUBLE-HEIGHT GYMNASIUM

FACULTY OFFICES

COMMUNICATING STAIR

MIDDLE GRADES

OUTDOOR LEARNING TERRACE

FINE ARTS SUITE

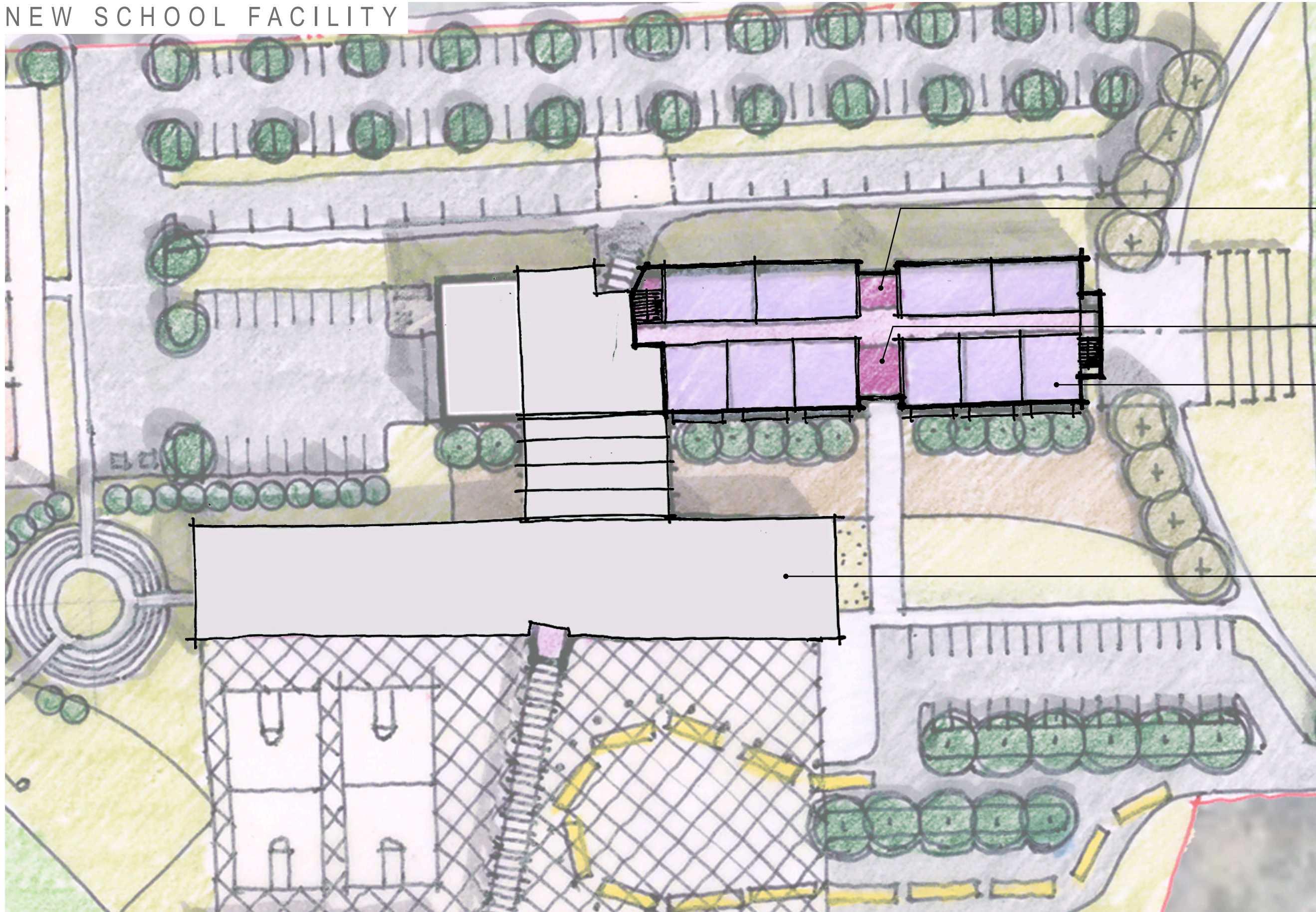
CORE

CLASSROOM





NEW SCHOOL FACILITY



FACULTY OFFICES

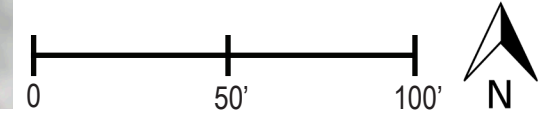
COMMUNICATING STAIR

UPPER GRADES

ROOF BELOW

CORE

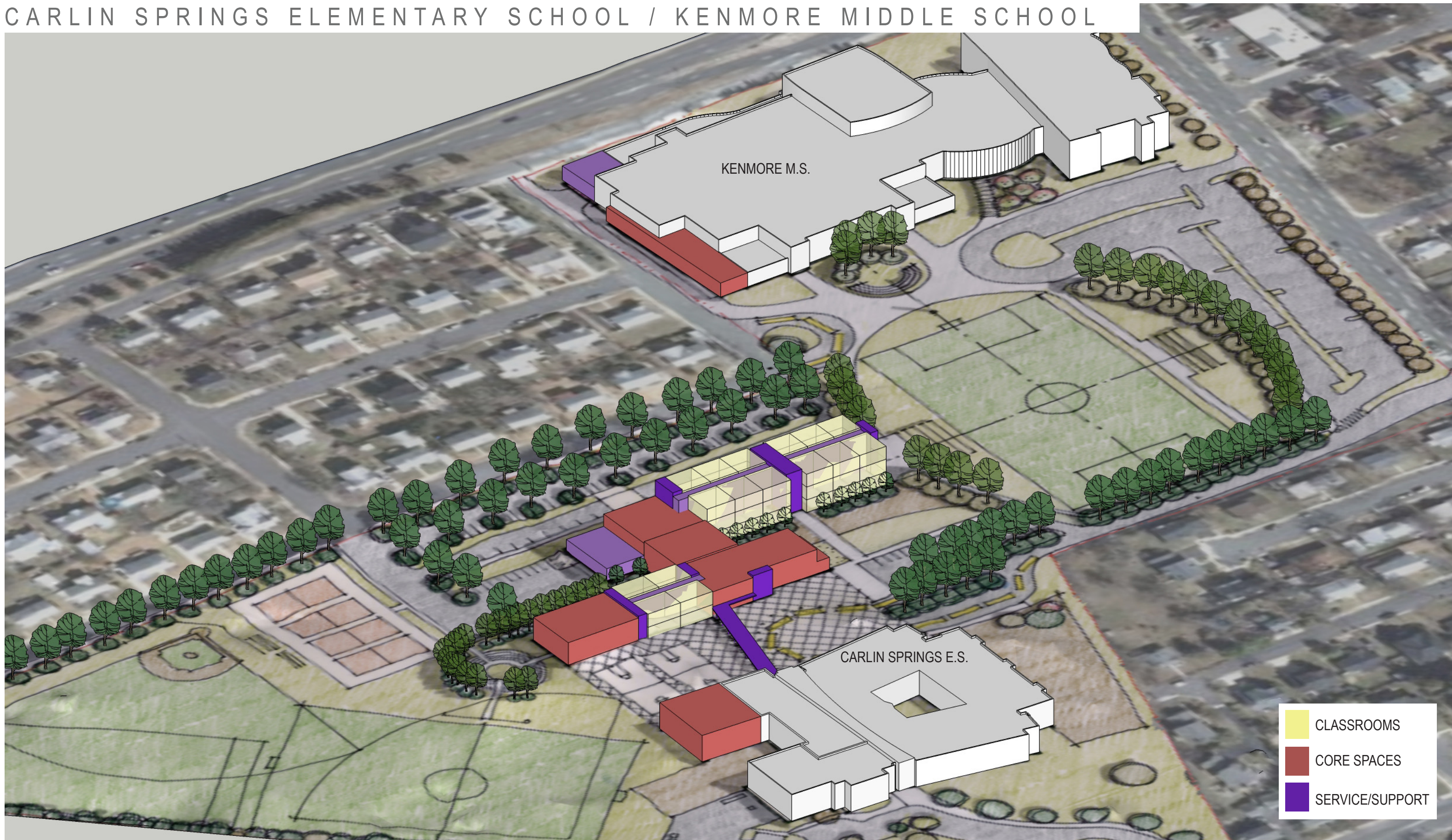
CLASSROOM



1:50

ARLINGTON PUBLIC SCHOOLS

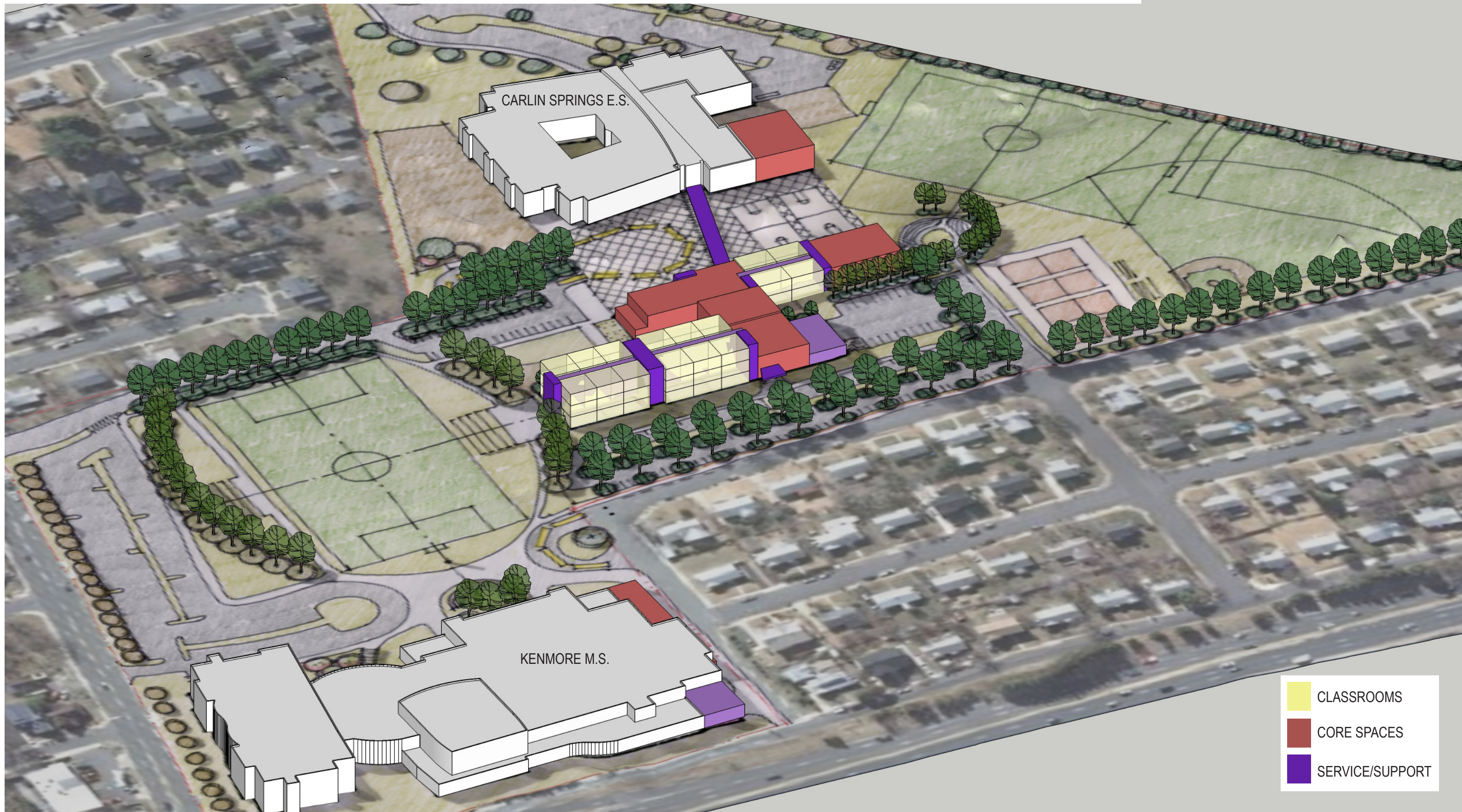




- CLASSROOMS
- CORE SPACES
- SERVICE/SUPPORT



CARLIN SPRINGS ELEMENTARY SCHOOL / KENMORE MIDDLE SCHOOL



- CLASSROOMS
- CORE SPACES
- SERVICE/SUPPORT



School Name	Addition gym GSF	Addition cafeteria GSF	Addition media center GSF	Other Ed Spec space added - GSF	TOTAL Addn GSF	Renovation GSF	Total addition cost	Site work cost	Bldg cost	Bldg system renovation cost	# of classrooms added	# of parking added
<b>McKinley Elementary</b>	n/a	2800	n/a [6]	40,700	43,500	12,200 [1]					7 net [8]	24 net gain
<b>Carlin Springs E.S. (Scheme A)</b>	5000	3000	n/a [2]	24,000 [5]	32,000	1000 [7]					16	35 new
<b>Kenmore Middle (Scheme A)</b>	n/a	2500+3000	n/a	15,000	20,500	1750 [3]					11 net [9]	60 new
<b>New School at CS/K campus (Scheme B)</b>	n/a	n/a	n/a	90000 new[5]	n/a	n/a					38 new	147 new
Remarks:												
1. Media enlargement 10000 SF; Kitchen enlargement 1200 SF; Demolition repair 1000 SF.												
2. Existing Media Center difficult to expand.												
3. Sacrifice Wellness Classroom for expanded Cafeteria.												
4. Expanded Lobby												
5. Total GSF for all floors												
6. Included in renovation column; see remark 1.												
7. Reconfiguration of existing Kitchen to increase food service capacity.												
8. (20) new classrooms minus (13) existing classrooms: {(4) at relocatables, (4) at demolished "Pentagon", (2) at Media expansion, (1) at Corridor extension, (1) at Music for expanded Kitchen, (1) at basement OT/PT.}												
9. (15) new classrooms minus (4) existing classrooms: {one at each floor of three story academic tower (total of 3) and (1) at expanded Cafeteria.}												
<b>D R A F T</b>												
VMDO Architects, P.C.												
7.NOV.2011												