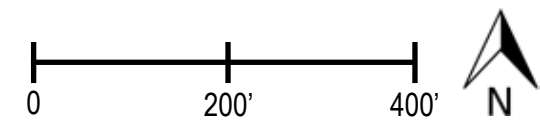


NEW ELEMENTARY SCHOOL #2



OPPORTUNITIES FOR IMPROVEMENTS

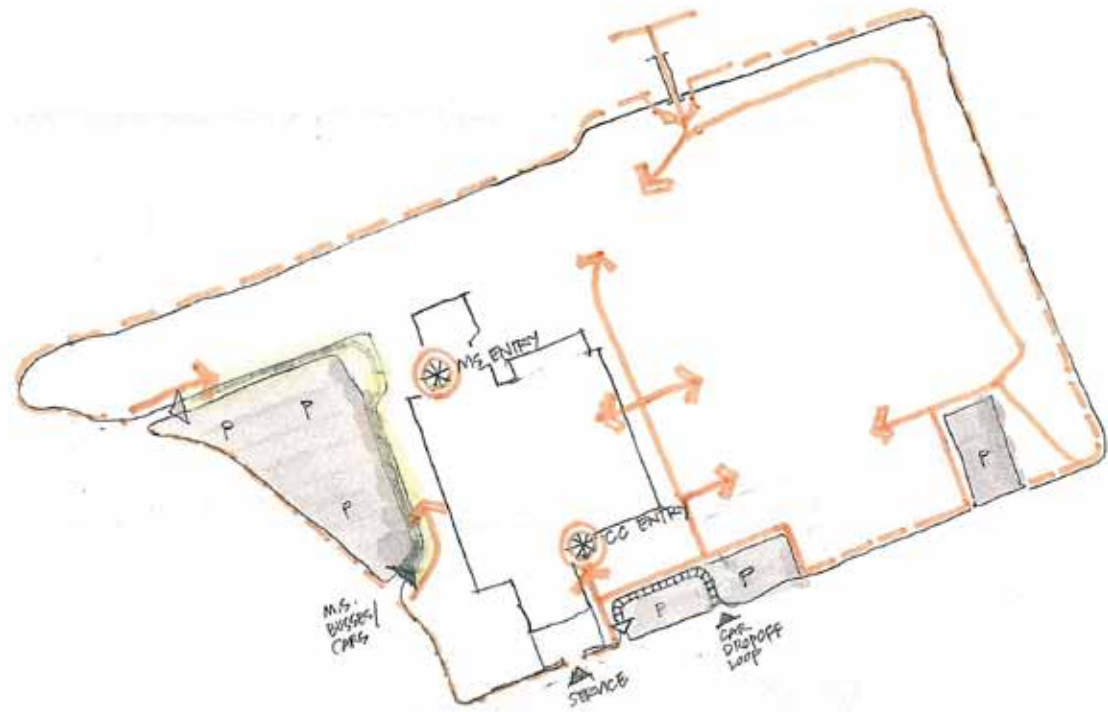
- Clarify entry path to the Middle School and the adjacent Theatre
- Incorporate rooftop daylighting and photovoltaic opportunities at the Middle School and Community Center
- Open the east wall of the Community Center onto the athletic fields
- Establish an architectural focal point at the corner of 2nd and Old Glebe with the new Middle School addition
- Locate parking zones at the perimeter of the site to maximize pedestrian space within the campus
- Arrange new construction (New Elementary School, Future Middle School Addition and possible new housing component) in multi-story bars oriented east-west to maximize daylighting opportunities



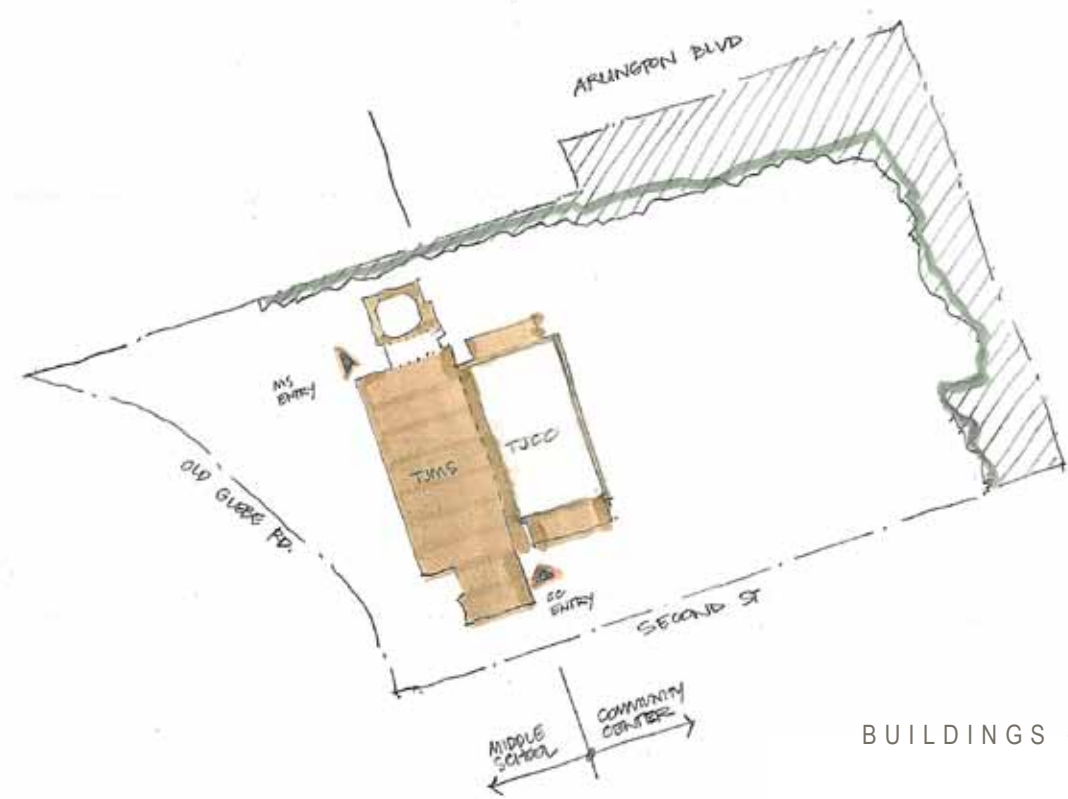
1:200

ARLINGTON PUBLIC SCHOOLS

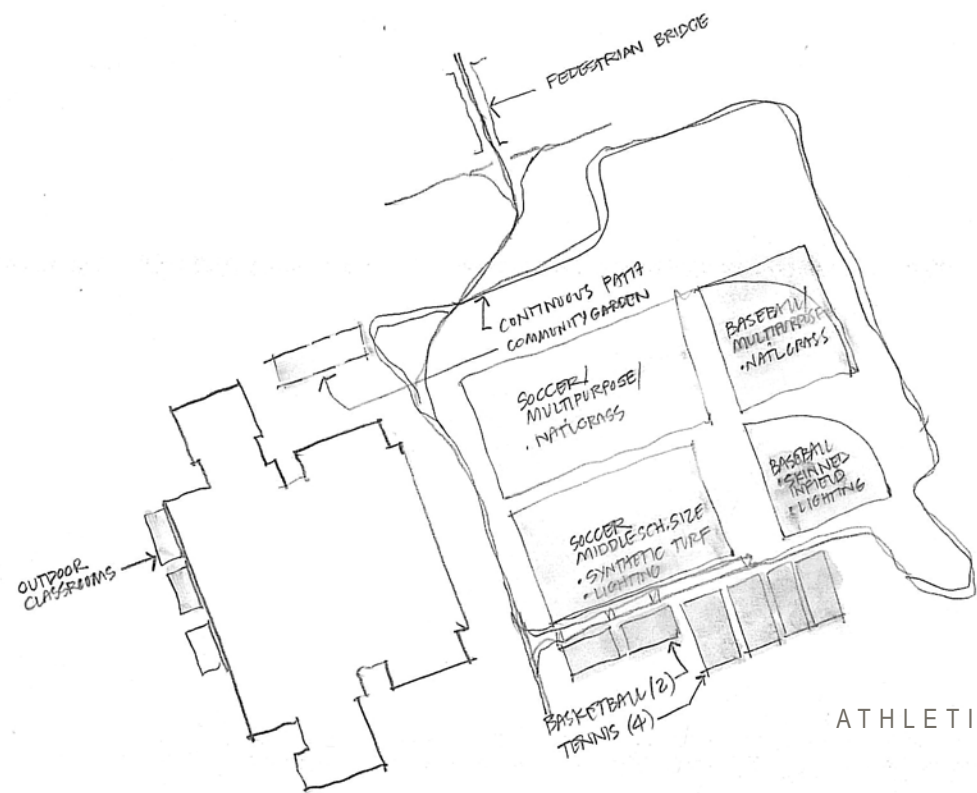
NEW ELEMENTARY SCHOOL #2



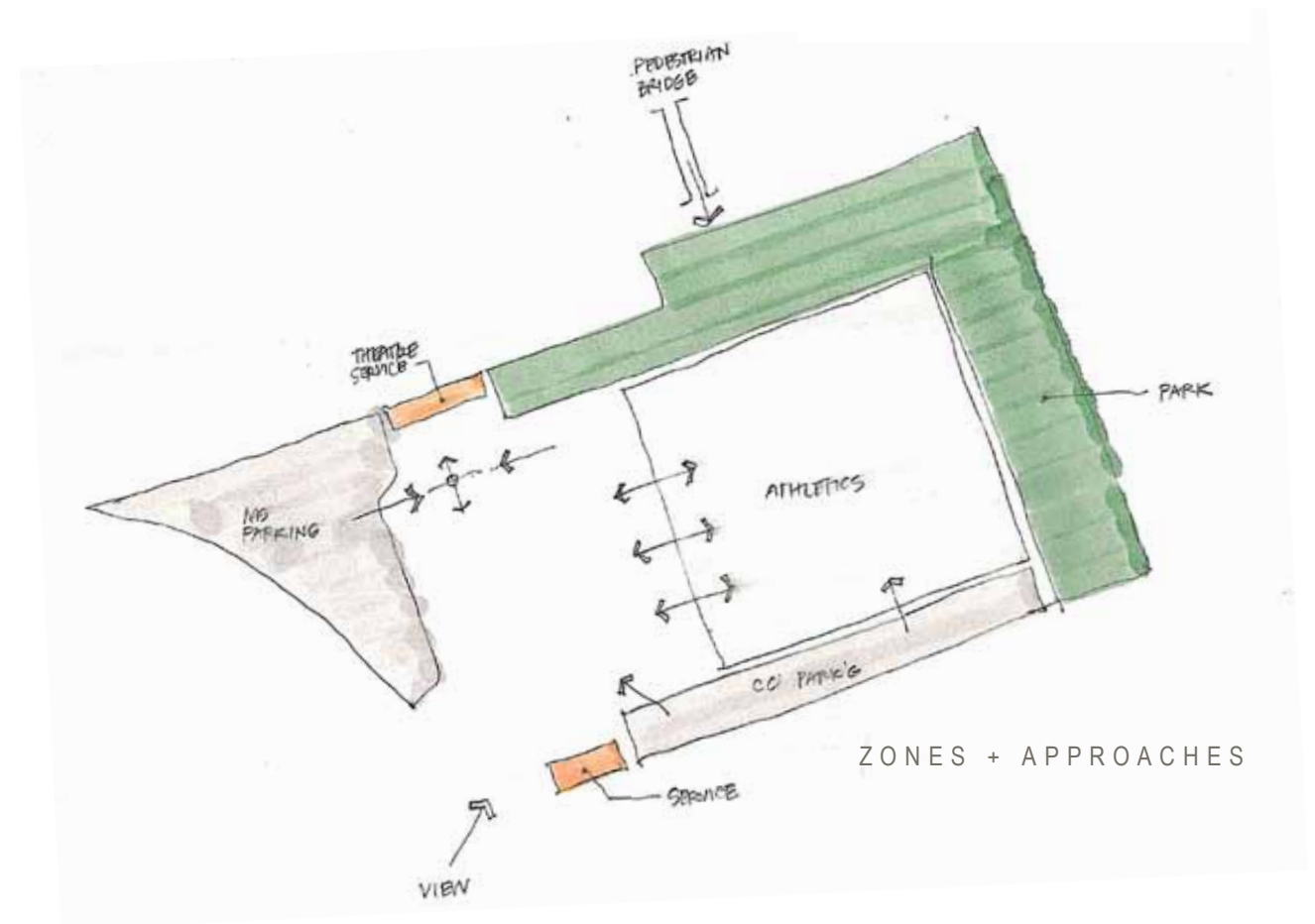
VEHICULAR + PEDESTRIAN PATTERNS



BUILDINGS + EDGES

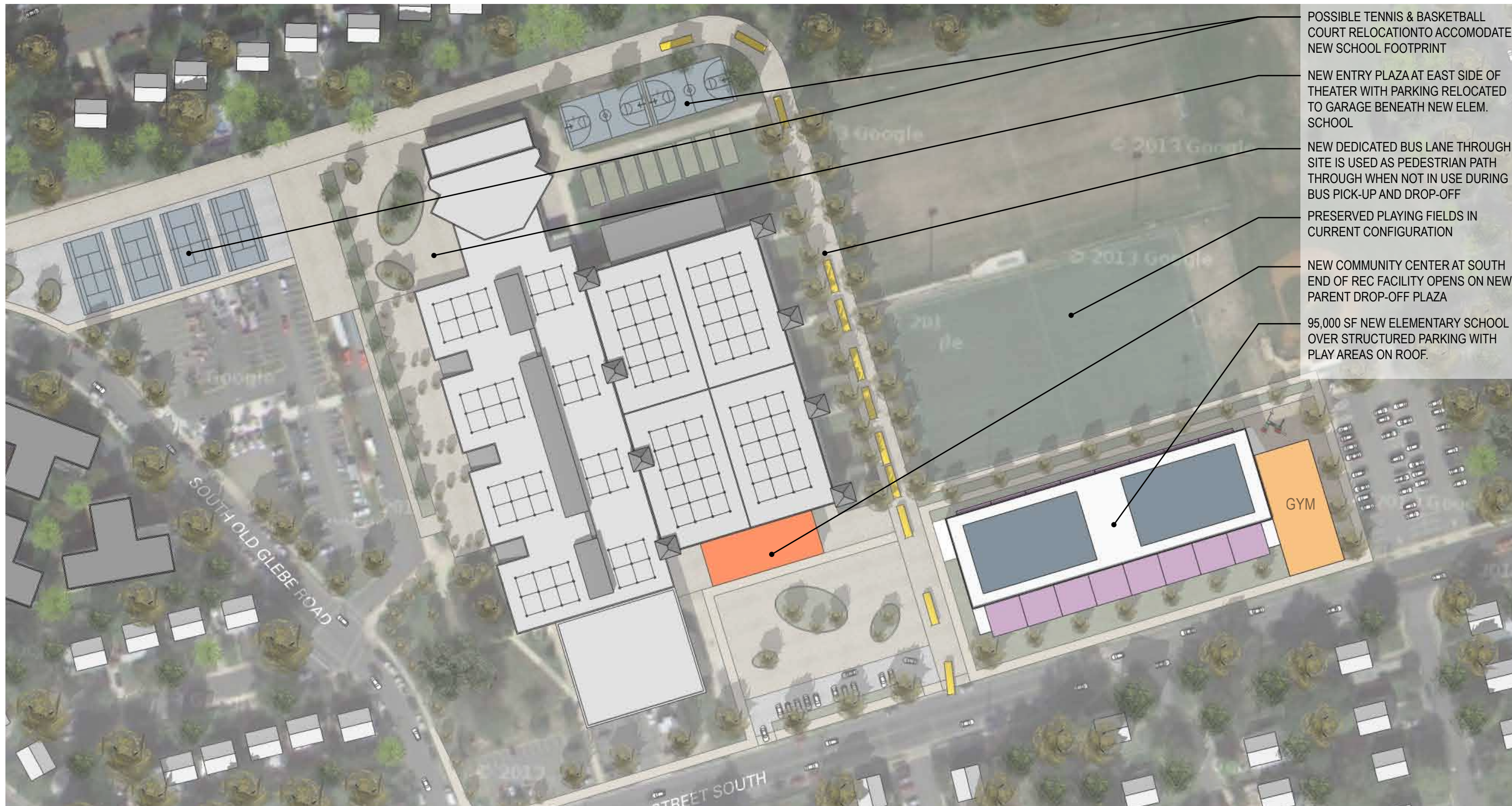


ATHLETICS + RECREATION

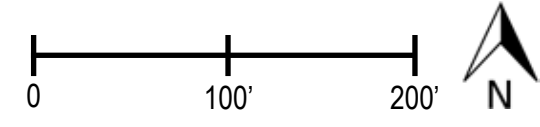


ZONES + APPROACHES

NEW ELEMENTARY SCHOOL #2

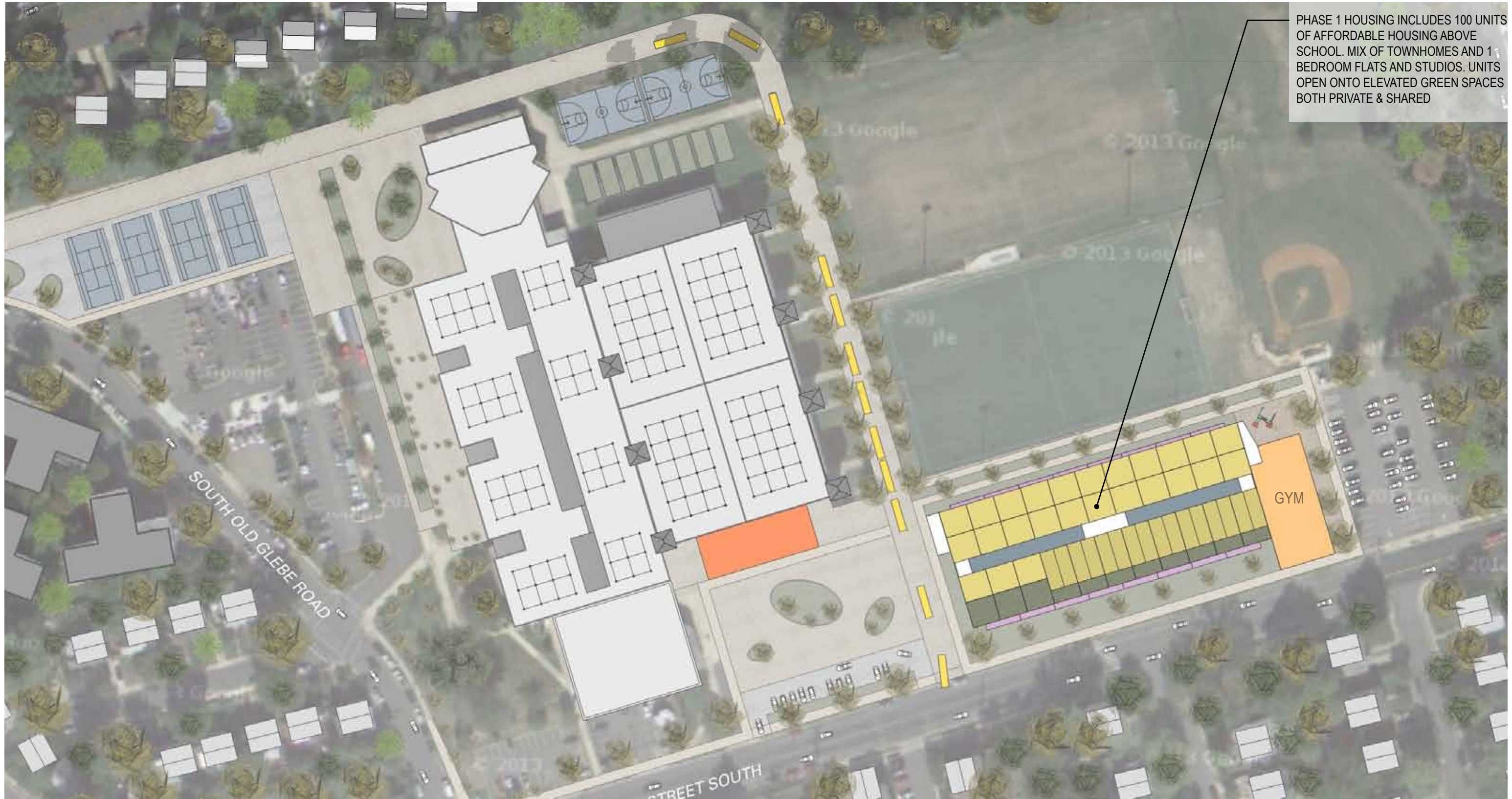


- POSSIBLE TENNIS & BASKETBALL COURT RELOCATION TO ACCOMMODATE NEW SCHOOL FOOTPRINT
- NEW ENTRY PLAZA AT EAST SIDE OF THEATER WITH PARKING RELOCATED TO GARAGE BENEATH NEW ELEM. SCHOOL
- NEW DEDICATED BUS LANE THROUGH SITE IS USED AS PEDESTRIAN PATH THROUGH WHEN NOT IN USE DURING BUS PICK-UP AND DROP-OFF
- PRESERVED PLAYING FIELDS IN CURRENT CONFIGURATION
- NEW COMMUNITY CENTER AT SOUTH END OF REC FACILITY OPENS ON NEW PARENT DROP-OFF PLAZA
- 95,000 SF NEW ELEMENTARY SCHOOL OVER STRUCTURED PARKING WITH PLAY AREAS ON ROOF.

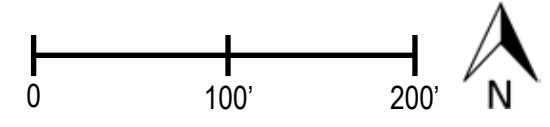


1:100 ARLINGTON PUBLIC SCHOOLS

NEW ELEMENTARY SCHOOL #2

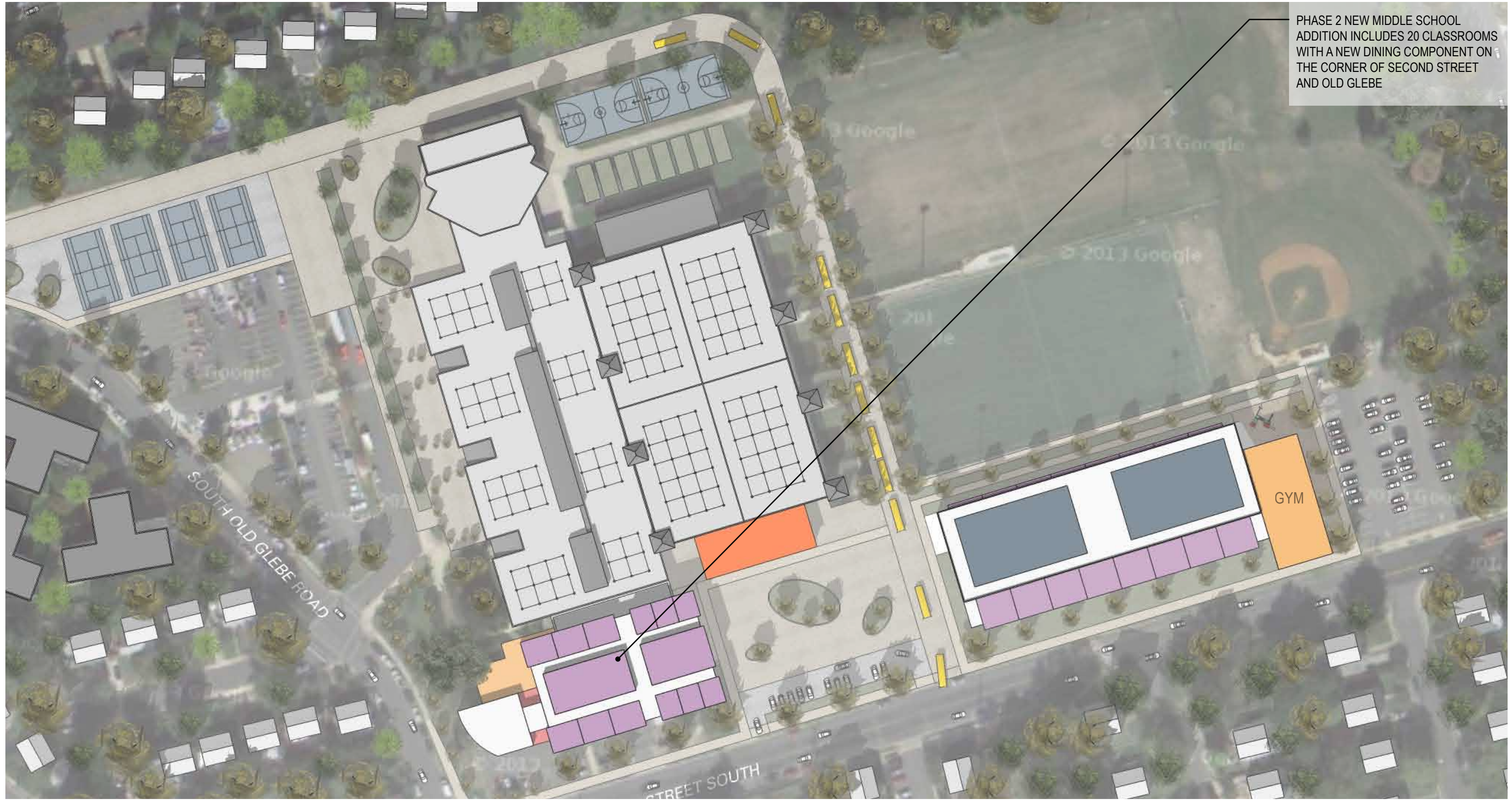


PHASE 1 HOUSING INCLUDES 100 UNITS OF AFFORDABLE HOUSING ABOVE SCHOOL. MIX OF TOWNHOMES AND 1 BEDROOM FLATS AND STUDIOS. UNITS OPEN ONTO ELEVATED GREEN SPACES BOTH PRIVATE & SHARED

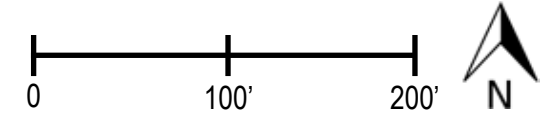


1:100 ARLINGTON PUBLIC SCHOOLS

NEW ELEMENTARY SCHOOL #2



PHASE 2 NEW MIDDLE SCHOOL ADDITION INCLUDES 20 CLASSROOMS WITH A NEW DINING COMPONENT ON THE CORNER OF SECOND STREET AND OLD GLEBE

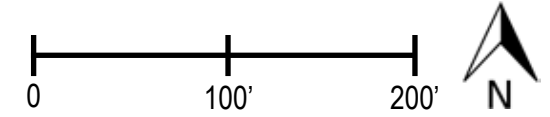


1:100 ARLINGTON PUBLIC SCHOOLS

NEW ELEMENTARY SCHOOL #2



PHASE 2 HOUSING ADDS 25 UNITS ABOVE THE MIDDLE SCHOOL ADDITION



1:100

ARLINGTON PUBLIC SCHOOLS

NEW ELEMENTARY SCHOOL #2



NEW ELEMENTARY SCHOOL #2



NEW ELEMENTARY SCHOOL #2



NEW ELEMENTARY SCHOOL #2



NEW ELEMENTARY SCHOOL #2



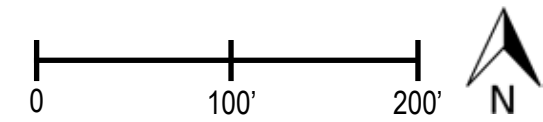
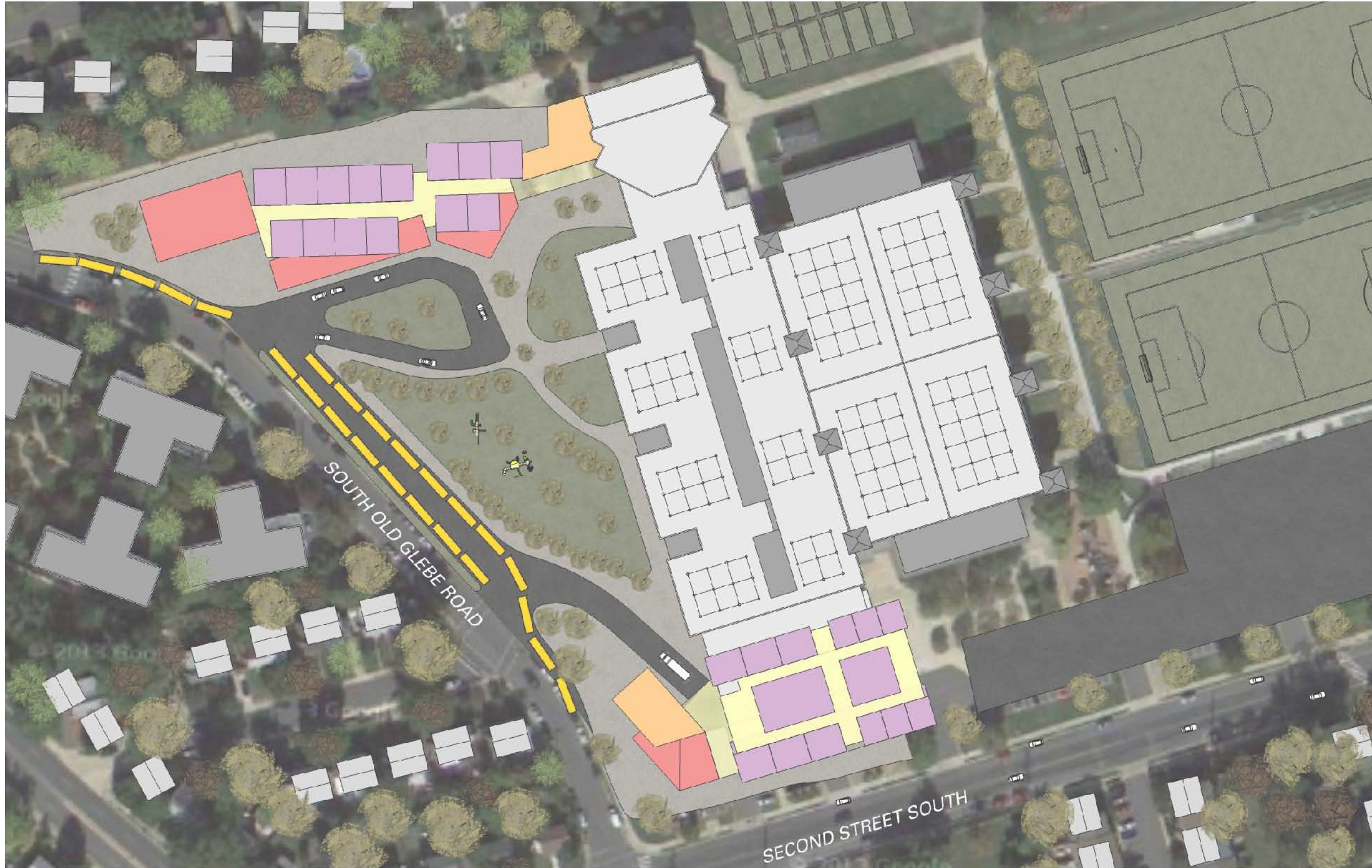
NEW ELEMENTARY SCHOOL #2



NEW ELEMENTARY SCHOOL #2



NEW ELEMENTARY SCHOOL #2



1:100

ARLINGTON PUBLIC SCHOOLS

NEW ELEMENTARY SCHOOL #2



NEW ELEMENTARY SCHOOL #2



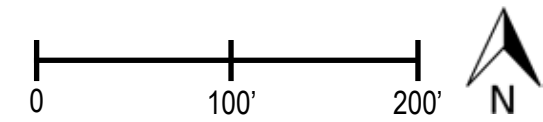
NEW ELEMENTARY SCHOOL #2



NEW ELEMENTARY SCHOOL #2



NEW ELEMENTARY SCHOOL #2



NEW ELEMENTARY SCHOOL #2



NEW ELEMENTARY SCHOOL #2



NEW ELEMENTARY SCHOOL #2



NEW ELEMENTARY SCHOOL #2



95,000 GSF (added separate Gym) new Elementary School #2 (assumed capacity = 650)
 (1 level underground parking garage with +/- 200 car capacity)

50,000 GSF Middle School addition
 (20) new classrooms increases existing capacity of 931 by 150% to 1300
 New Cafeteria and Kitchen (potentially serves new both schools if built concurrently with ES.)

(125) affordable housing units – various types

EXISTING PARKING (Based on TDG Analysis)

Facility	total	regular	handicapped
Tennis courts -- 2nd street	61	58	3
Recreation center -- 2nd street	59	56	3
Jefferson Middle School - small lot on 2nd street	23	23	0
Jefferson Middle School large lot -- S. Old Glebe Road	194	189	5
Two grassy areas -- S. Old Glebe Road	Estimated 10 each		
On-street parking – 2 nd Street (school side)	Estimated 22 spaces		
On-street parking- S. Old Glebe Road	Estimated 16 spaces		

Parking Totals:

- All school lots: 217 spaces
- School lots plus Recreation Center lot: 276 spaces
- School lots plus tennis court lot: 278 spaces
- All lots: 337 spaces
- On-street parking (school side: 22 spaces)

FUTURE PARKING (Based on TDG Analysis)

Facility	CURRENT	FUTURE
Middle School(Projected Design Capacity = 1,300)	217	281 (173 staff, 33 visitors, 75 auditorium)
New Elementary School(Projected Design Capacity = 630)	N/A	100 (84 staff, 15.75 visitors)
Rec Center	59	59 (No change)
Tennis courts	61	61 (No change)
On-Street (not included as required in counts)	38	22
Housing (structured parking under new school)	N/A	125(could be shared, non-simultaneous use)
Total	337	612 (net add of 289 spaces)