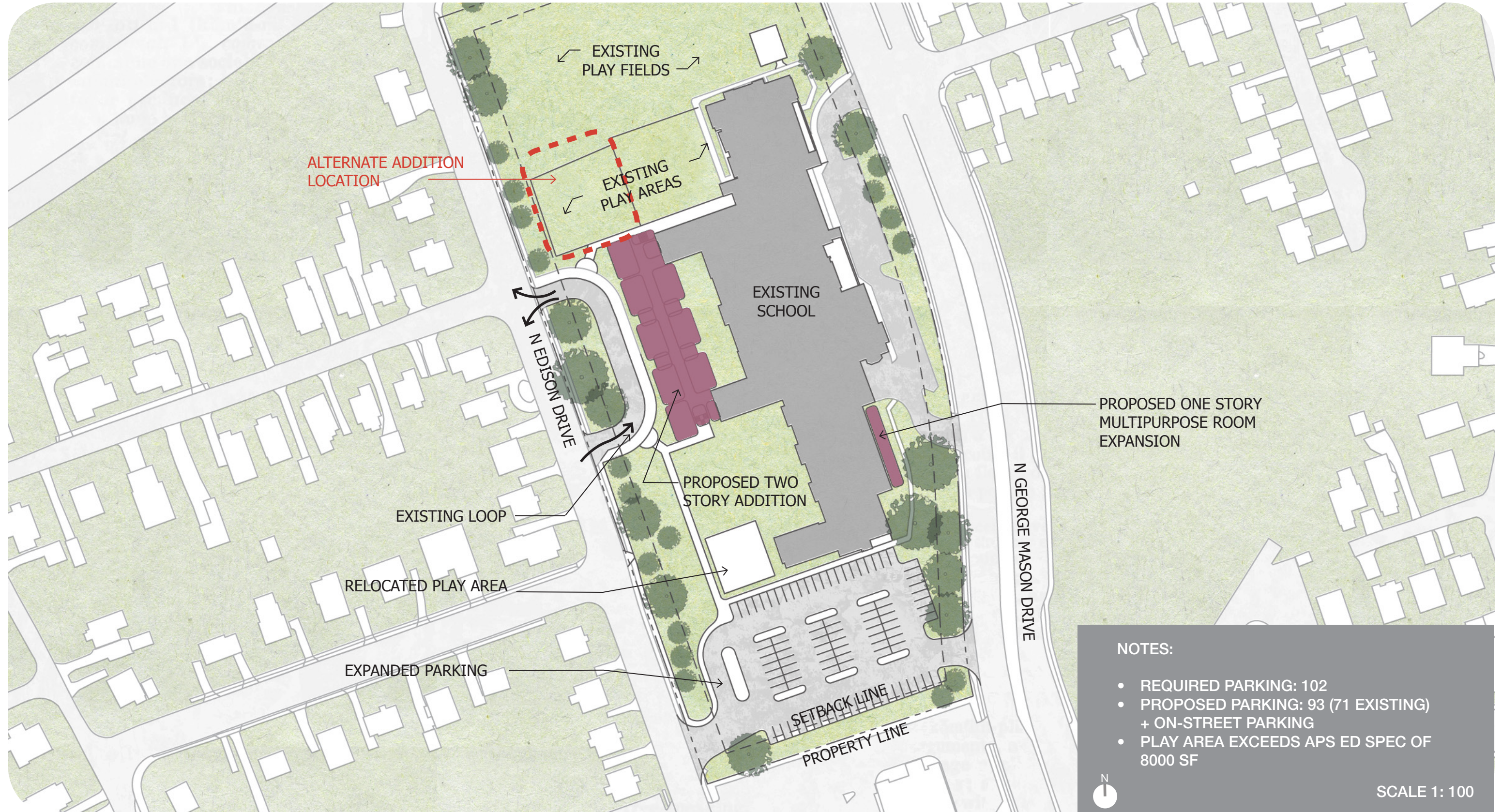


# ARLINGTON TRADITIONAL SCHOOL





# ARLINGTON TRADITIONAL SCHOOL



**NOTES:**

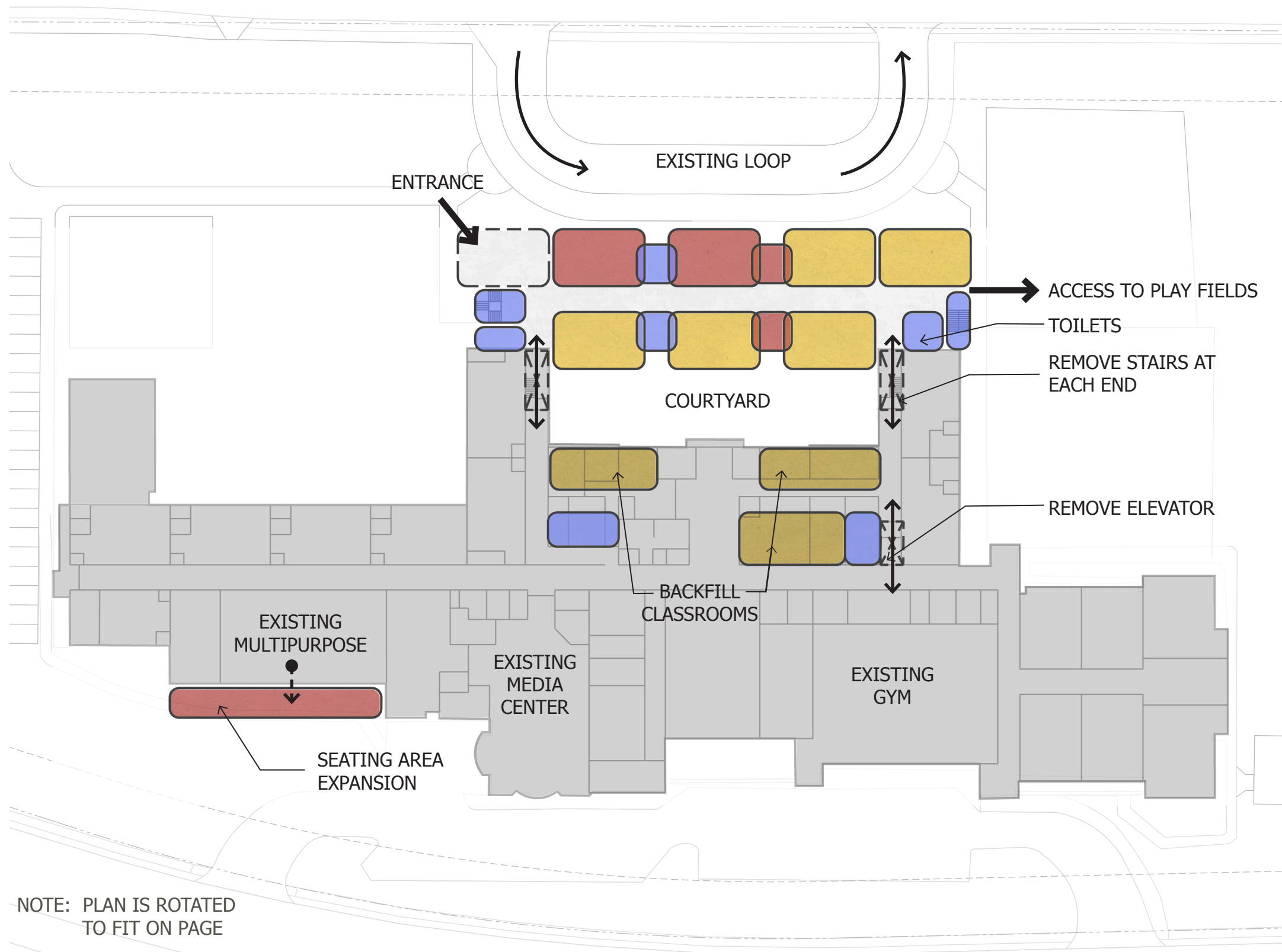
- REQUIRED PARKING: 102
- PROPOSED PARKING: 93 (71 EXISTING) + ON-STREET PARKING
- PLAY AREA EXCEEDS APS ED SPEC OF 8000 SF



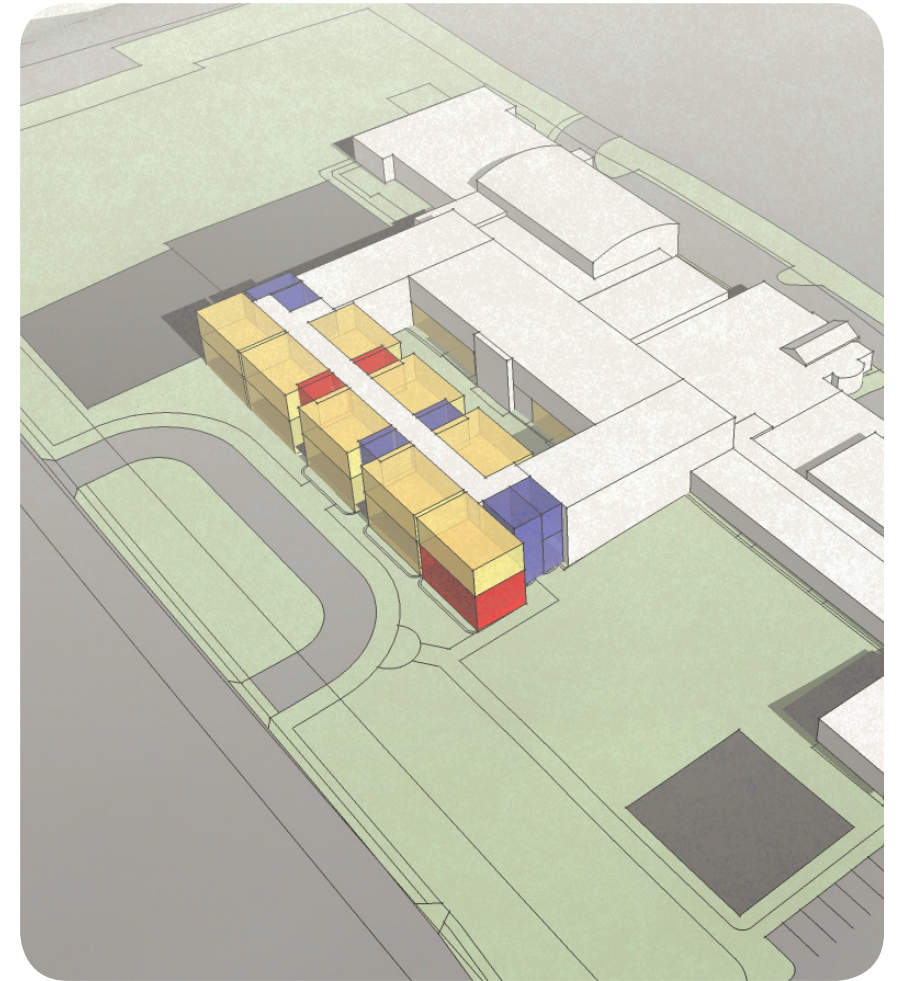
SCALE 1:100



# ARLINGTON TRADITIONAL SCHOOL



**ENTRY LEVEL PLAN**



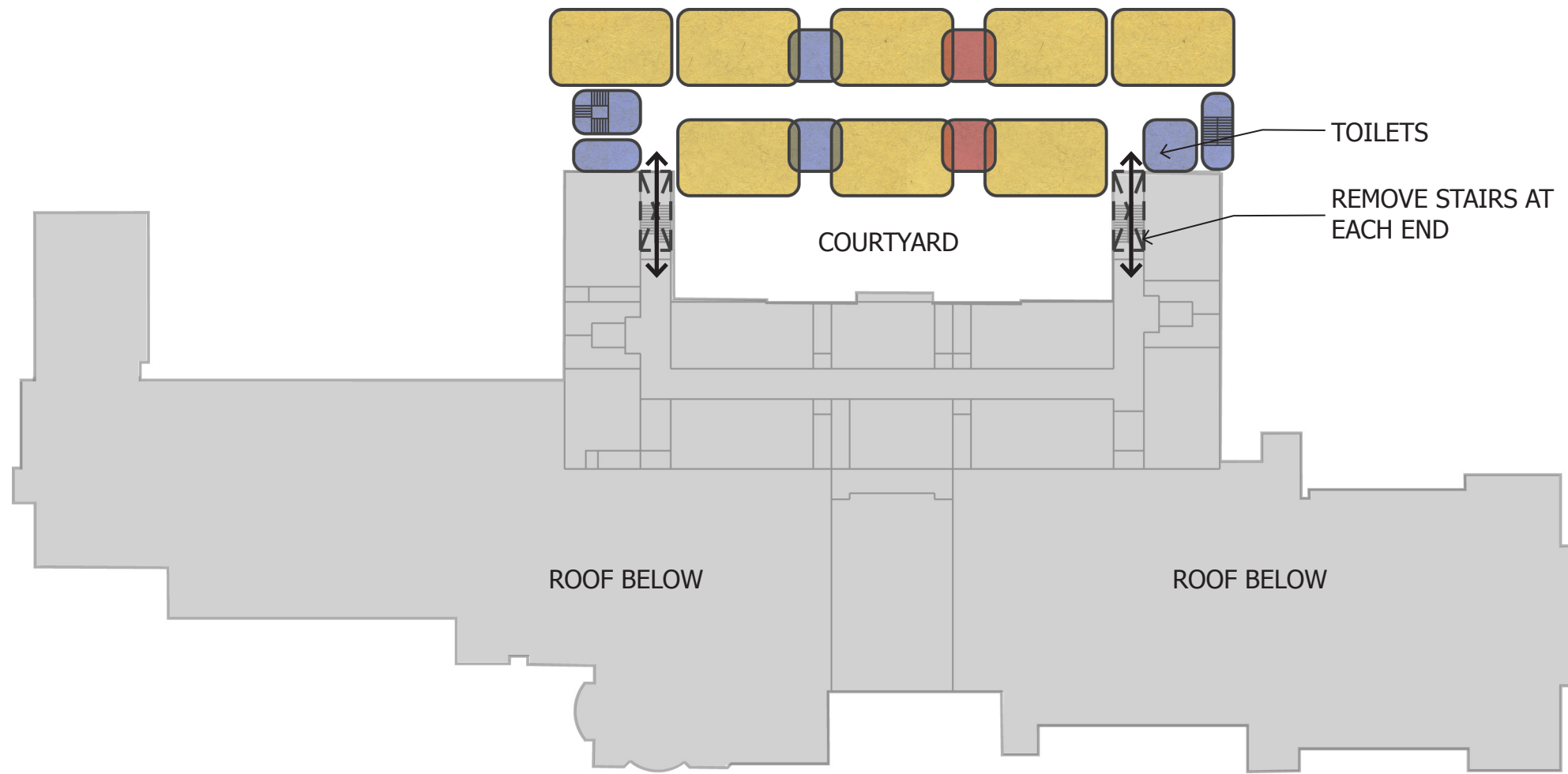
CLASSROOM	CORE + SUPPORT	SERVICES
-----------	----------------	----------

**NOTES:**

- TWO STORY ADDITION
- 26,000 SF ADDITION, 5,200 SF RENOVATION
- RELOCATE ADMINISTRATION TO NEW ADDITION (AT FRONT OF SCHOOL)
- EXPAND PARKING LOT
- EXTEND AND ENHANCE EXISTING CIRCULATION FOR COHERENT DESIGN
- RELOCATE PLAYGROUND AREA
- EXISTING GYM & MEDIA CENTER MEET ED SPEC (NO PROPOSED ADDITION)
- EXPAND MULTIPURPOSE ROOM SEATING

**SCALE 1:50**

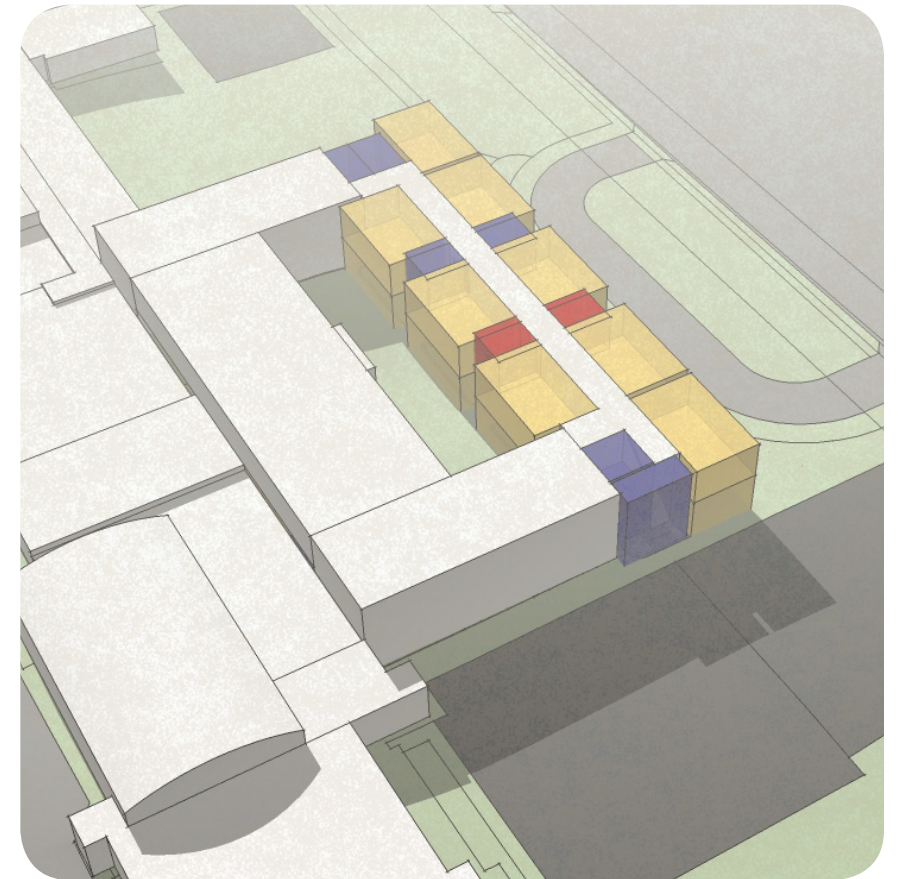
# ARLINGTON TRADITIONAL SCHOOL



NOTE: PLAN IS ROTATED TO FIT ON PAGE



## UPPER LEVEL FLOOR PLAN



CLASSROOM	CORE + SUPPORT	SERVICES
		SCALE 1:50