

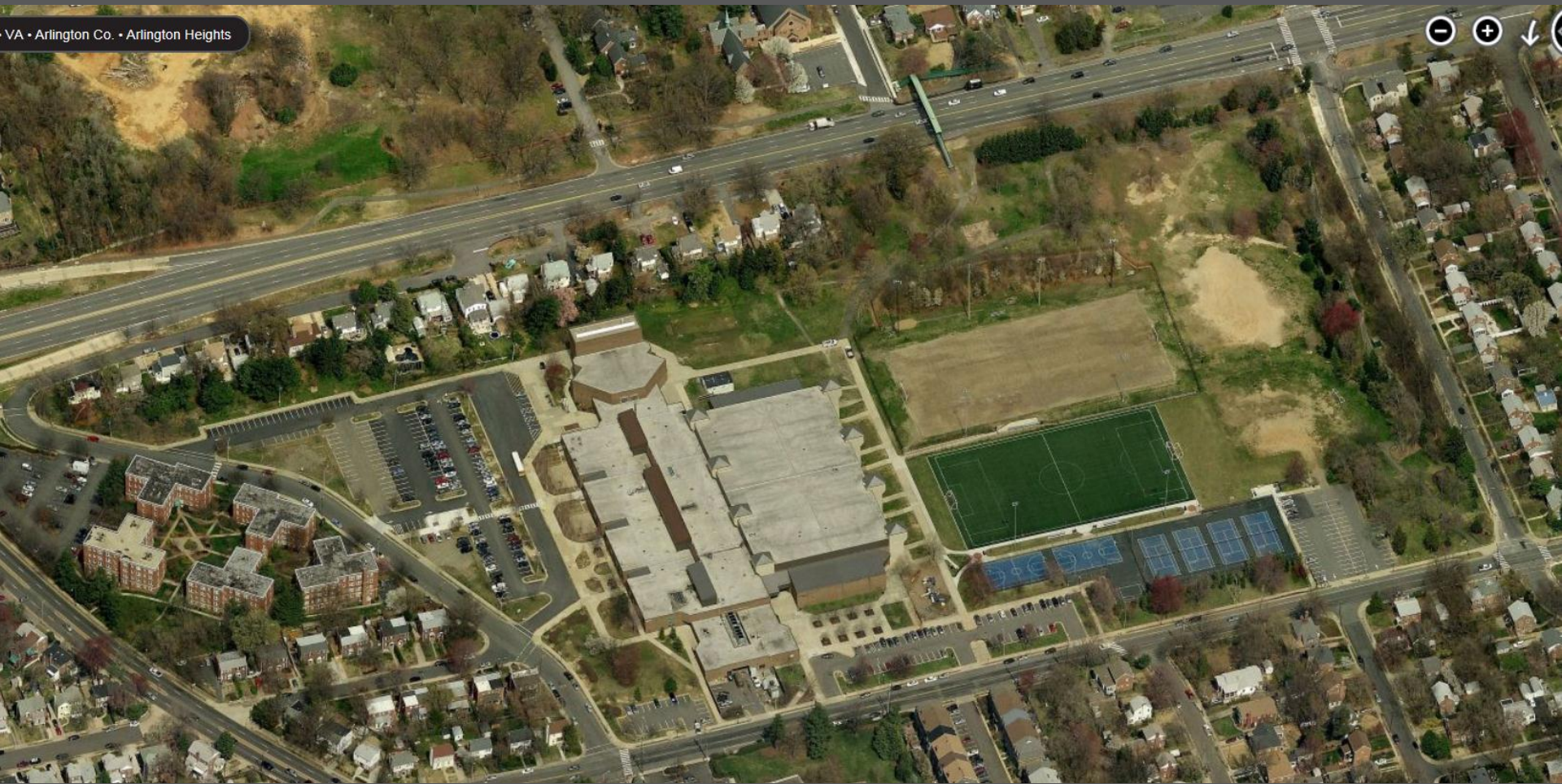
More Seats for More Students New School Study at the Thomas Jefferson site



Arlington
Public
Schools

MORE Seats for
Students

Thomas Jefferson site



VA • Arlington Co. • Arlington Heights

Opportunities for improvement

VA • Arlington Co. • Arlington Heights

Maintain/relocate & improve multiuse measured trail

Enhance/expand existing park amenities

Maximize and enhance green space

Plan now for potential expansion of middle school

Coordinate prominent entrances to middle school, new school and community amenities

Opportunities for improvement

VA • Arlington Co. • Arlington Heights

Clarify overall site way-finding, while addressing & improving parking availability & appearance

Address traffic & site access issues

Consider direct access from Arlington Boulevard

Improve amenities for county fair & other events

Maintain/relocate community garden

Maintain landscape buffer to Irving Street

Challenges for preserving site amenities

VA • Arlington Co. • Arlington Heights

Budget challenges

Location of new school on site to preserve green space

Footprint v/s height of new school

Placement of tennis courts

Providing outside play space for elementary school

- A: TJ MS + Community Center
- B: Site Boundary
- C: Multi-use Measured Trail
- D: New Elementary School
- E: New Middle School Addition
- F: New Parking lot / drop off
- G: New bus loop / pedestrian walk
- H: Relocated BB courts & gardens



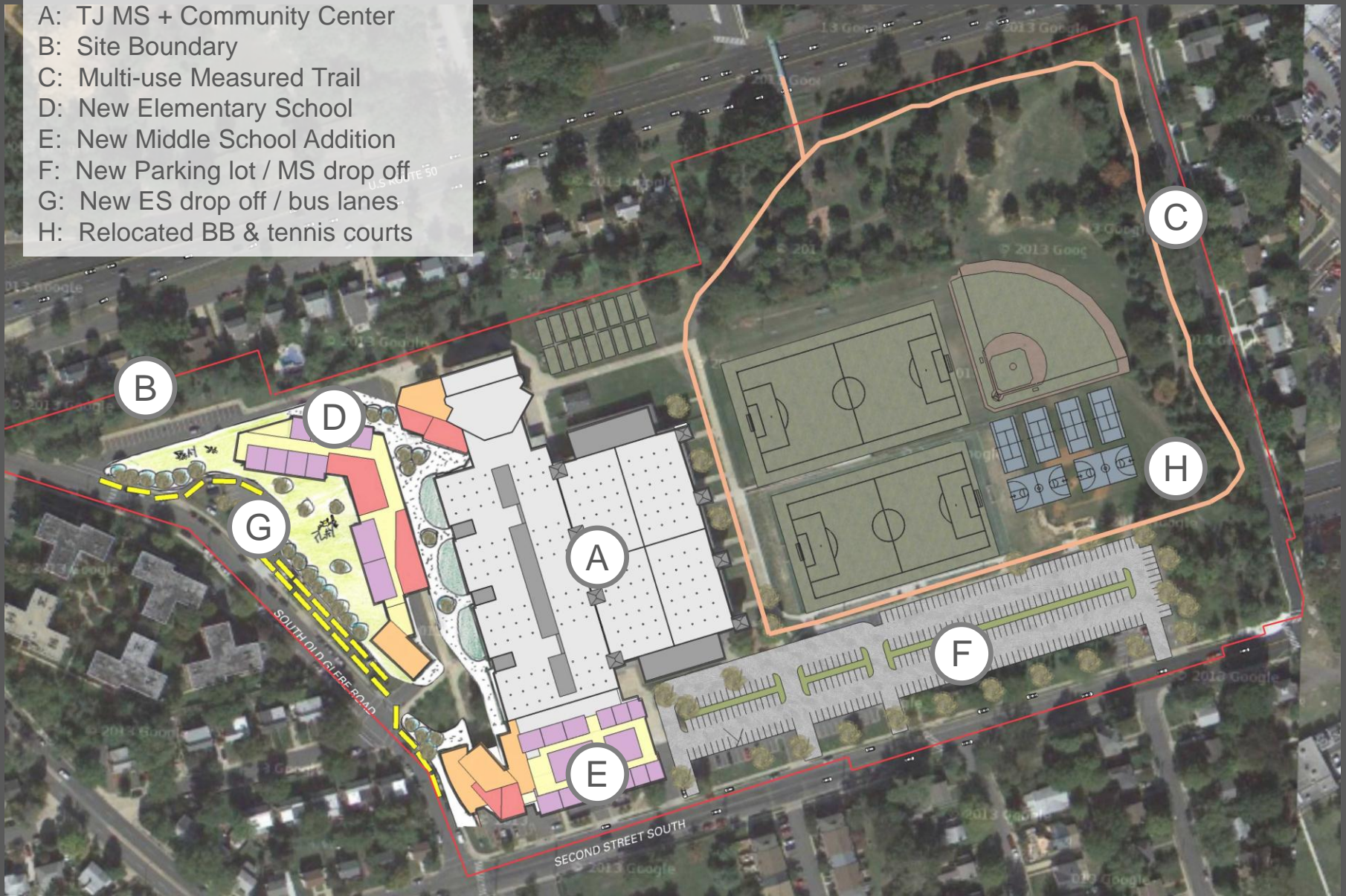


- A: TJ MS + Community Center
- B: Site Boundary
- C: Multi-use Measured Trail
- D: New Elementary School
- E: New Middle School Addition
- F: New Parking lot / MS drop off
- G: New bus lanes / playgrounds
- H: Relocated BB & tennis courts





- A: TJ MS + Community Center
- B: Site Boundary
- C: Multi-use Measured Trail
- D: New Elementary School
- E: New Middle School Addition
- F: New Parking lot / MS drop off
- G: New ES drop off / bus lanes
- H: Relocated BB & tennis courts





- A: TJ MS + Community Center
- B: Site Boundary
- C: Multi-use Measured Trail
- D: New Elementary School
- E: New Middle School Addition
- F: New Parking lot / drop off
- G: New bus loop / pedestrian walk
- H: New access to Arlington Blvd



