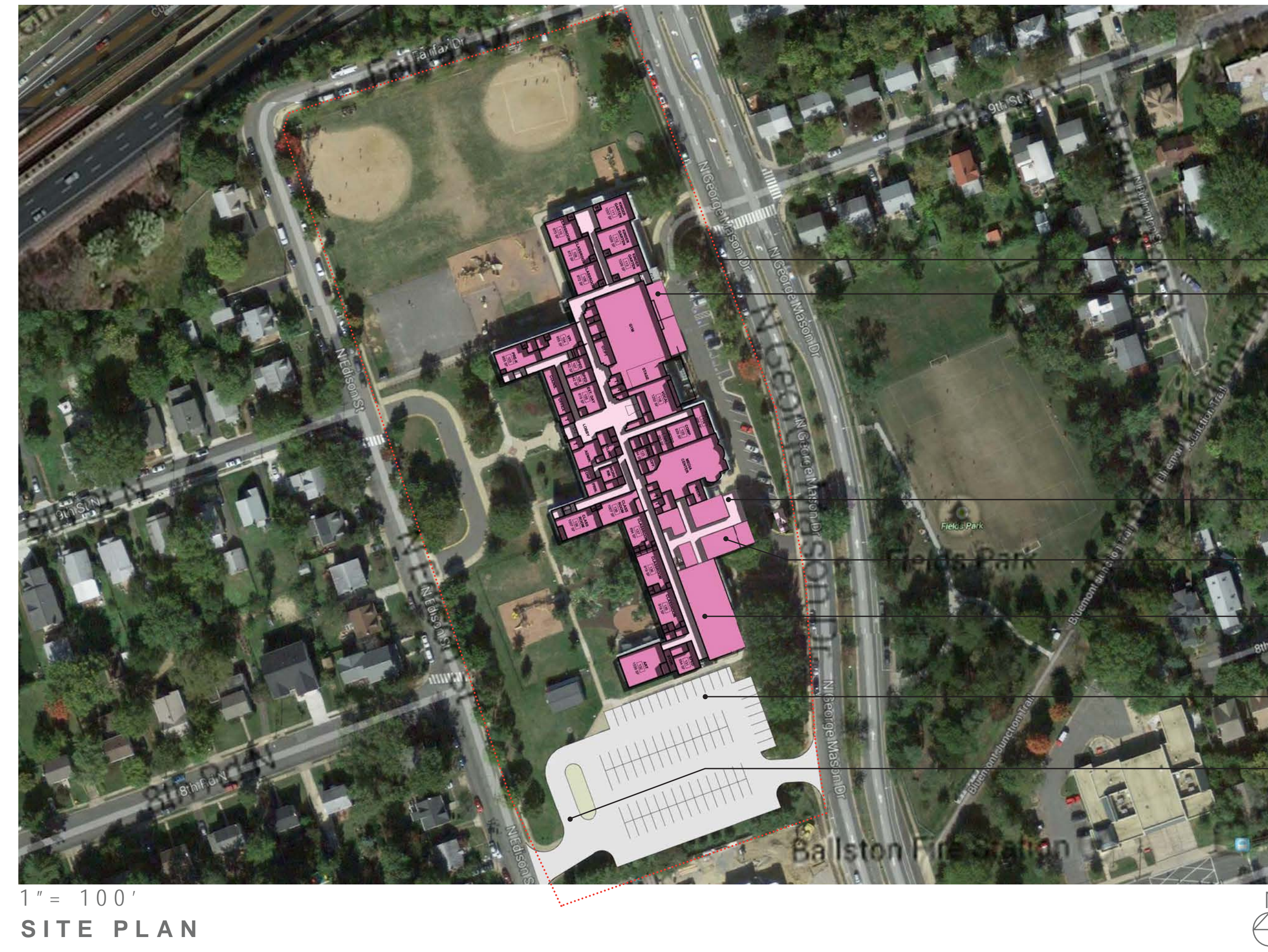


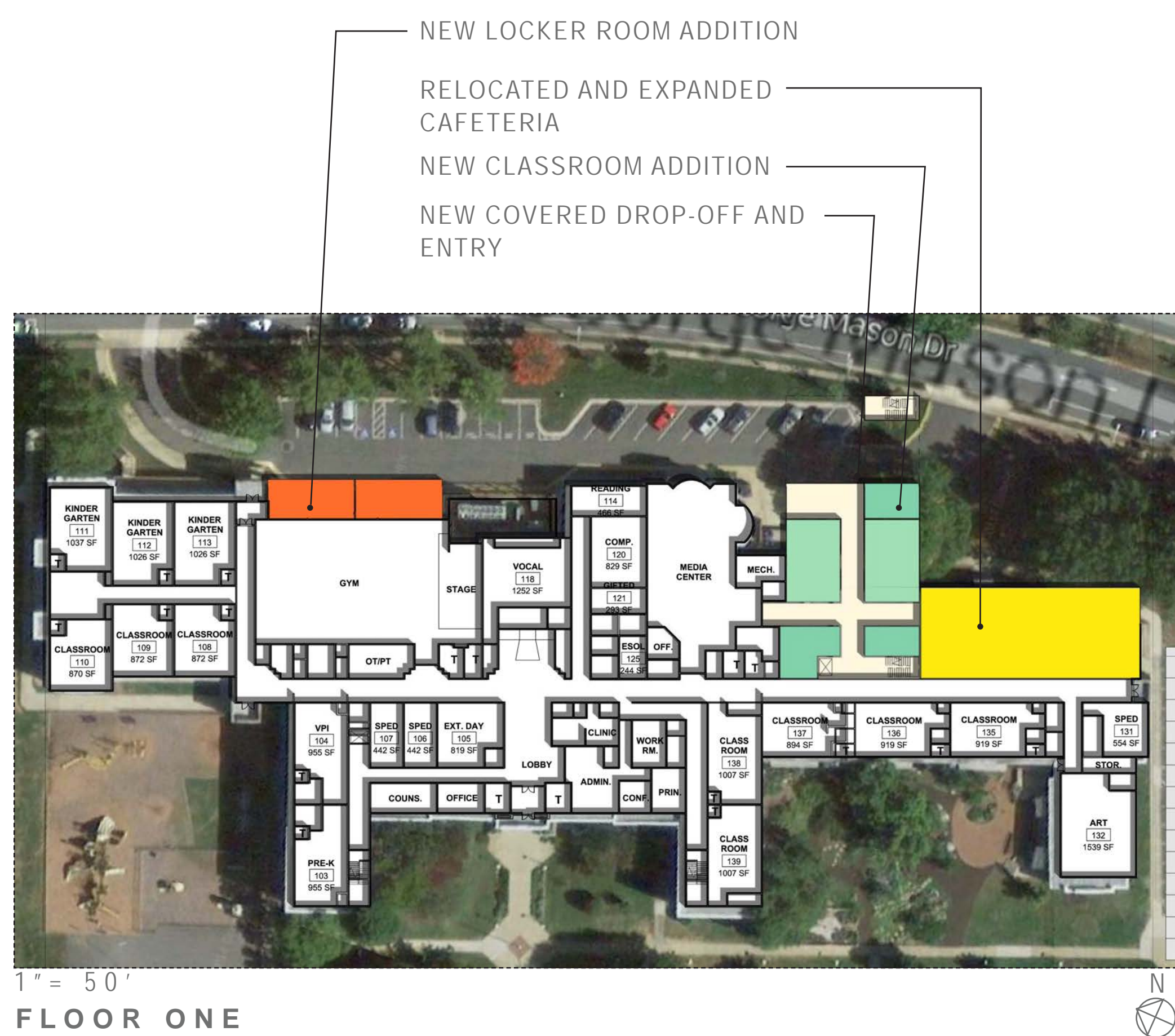


1" = 100'  
EXISTING CONDITION

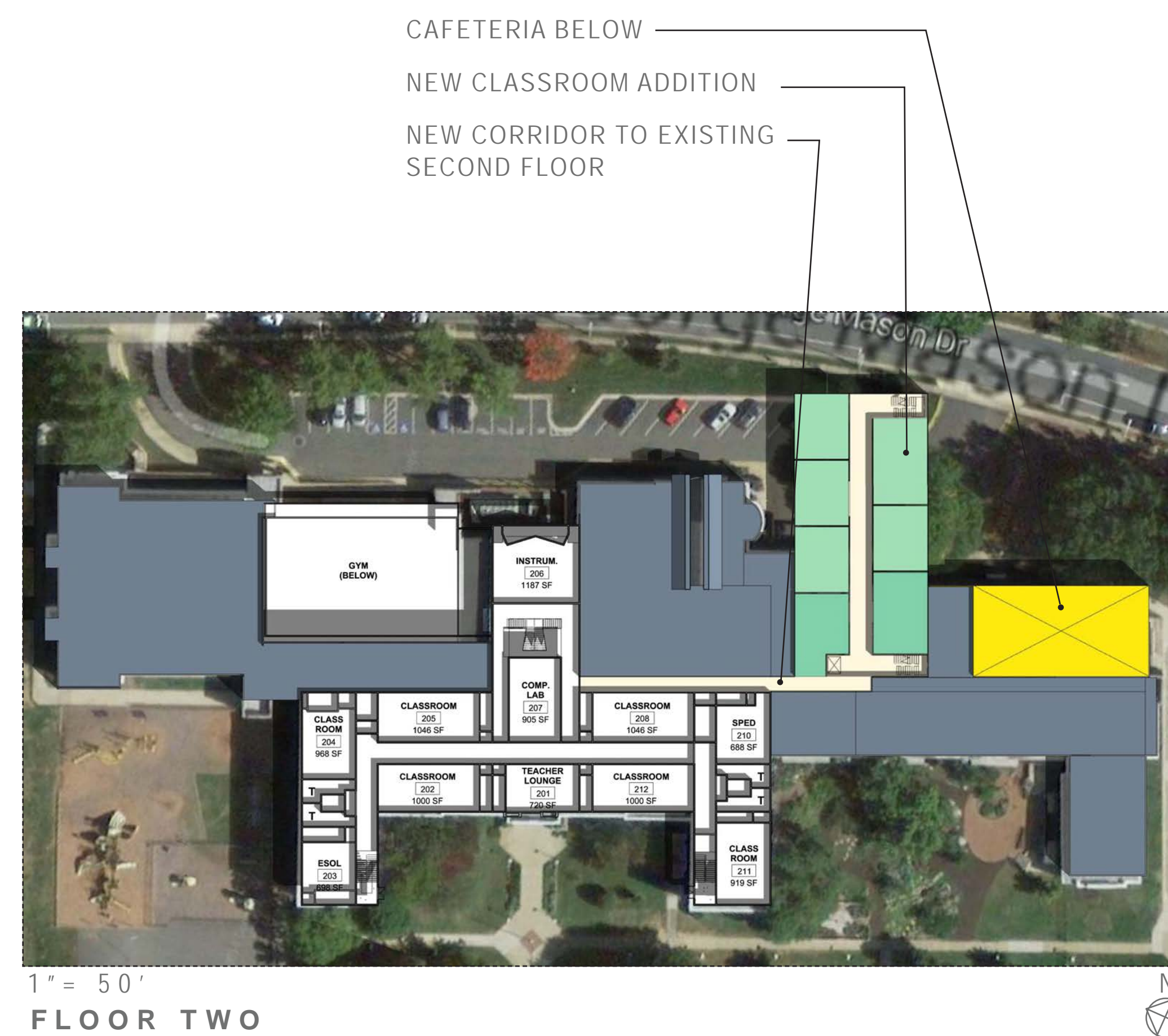


1" = 100'  
SITE PLAN

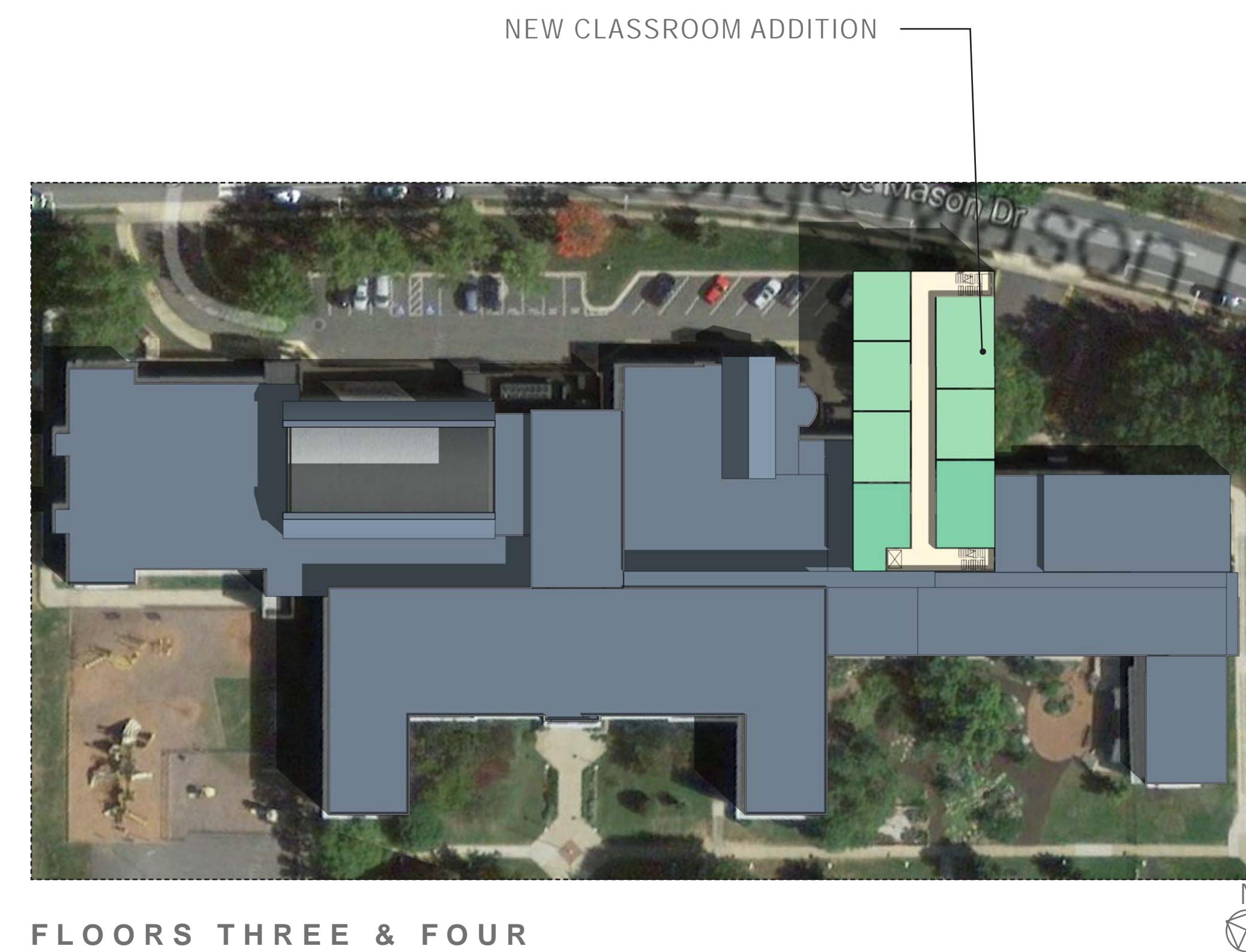
## Pros / Cons



1" = 50'  
FLOOR ONE



1" = 50'  
FLOOR TWO



FLOORS THREE & FOUR

- CIRCULATION
- STORAGE/CUST.
- BATHROOMS
- MECHANICAL
- ACADEMIC
- RESOURCE/SUPPORT
- LAB/STUDIO
- INFORMAL/FLEX
- GYM
- LOCKER
- PERFORMANCE ART
- LIBRARY
- DINING / KITCHEN
- FITNESS
- ADMINISTRATION

This preliminary scheme suggests elevating a compact multi-story addition on the back side of the school, facing George Mason Drive. The existing cafeteria would be replaced and enlarged to make way for this addition. The elevated second and third story allow for a covered porte-cochere for secondary drop-off and cafeteria queuing, and makes a prominent statement on the busier, George Mason Drive side of the school, while preserving the formality of the existing school's front lawn. As shown, a second floor connection across the existing rooftop is a possibility.