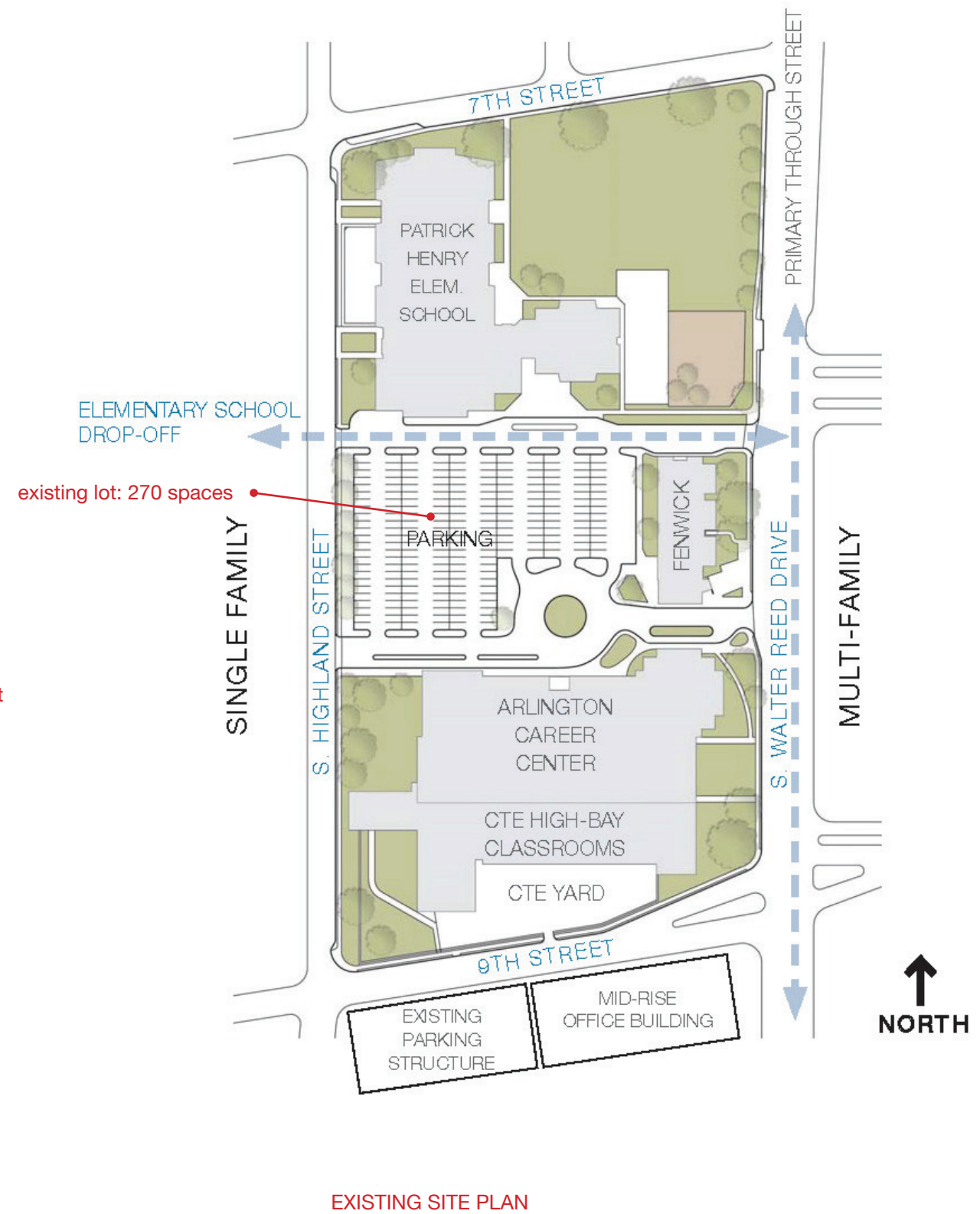
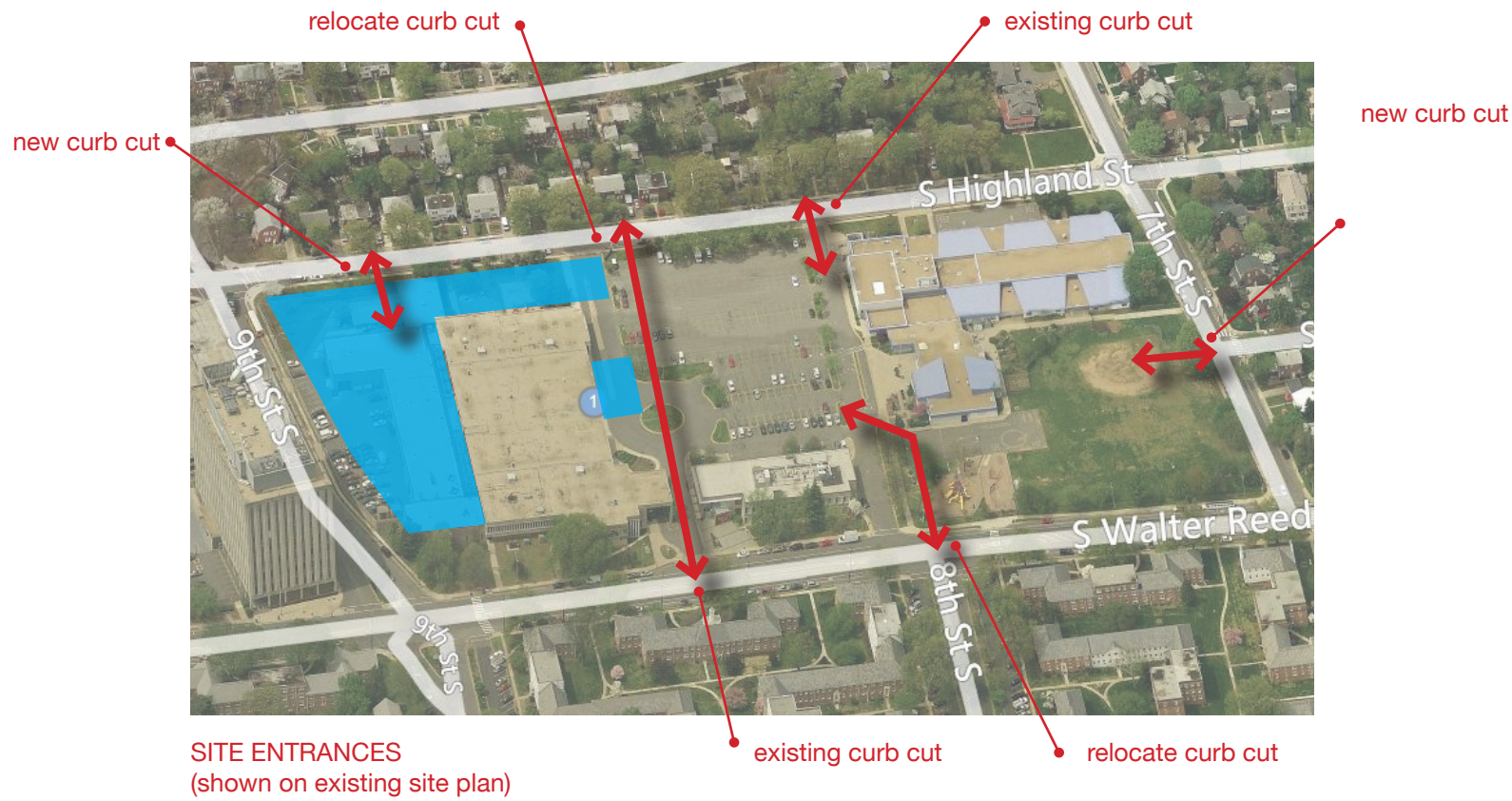
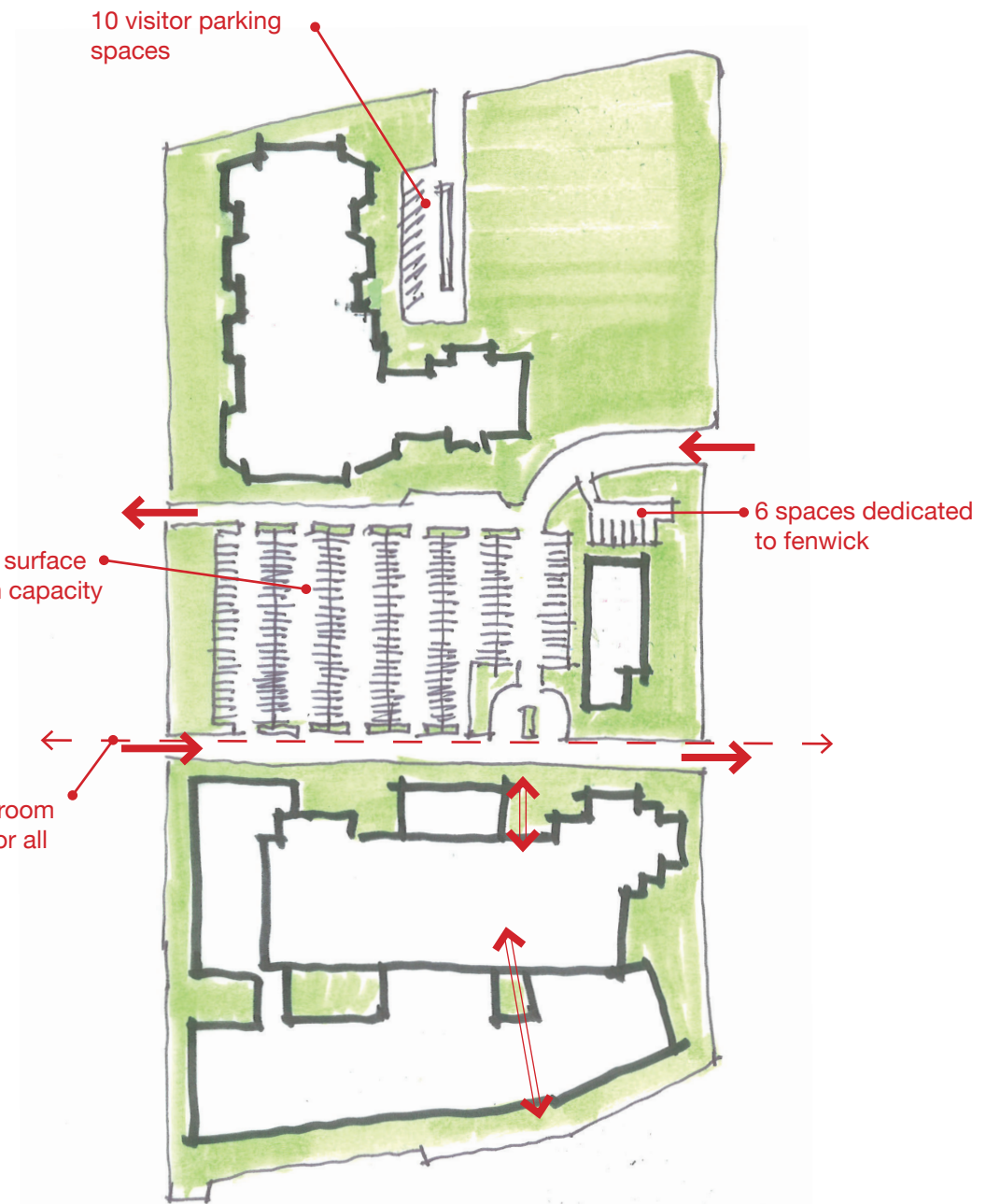


PARKING TABULATIONS:

(PER FORM BASED CODE: 1 SPACE PER 1000 GSF OF DEVELOPMENT)

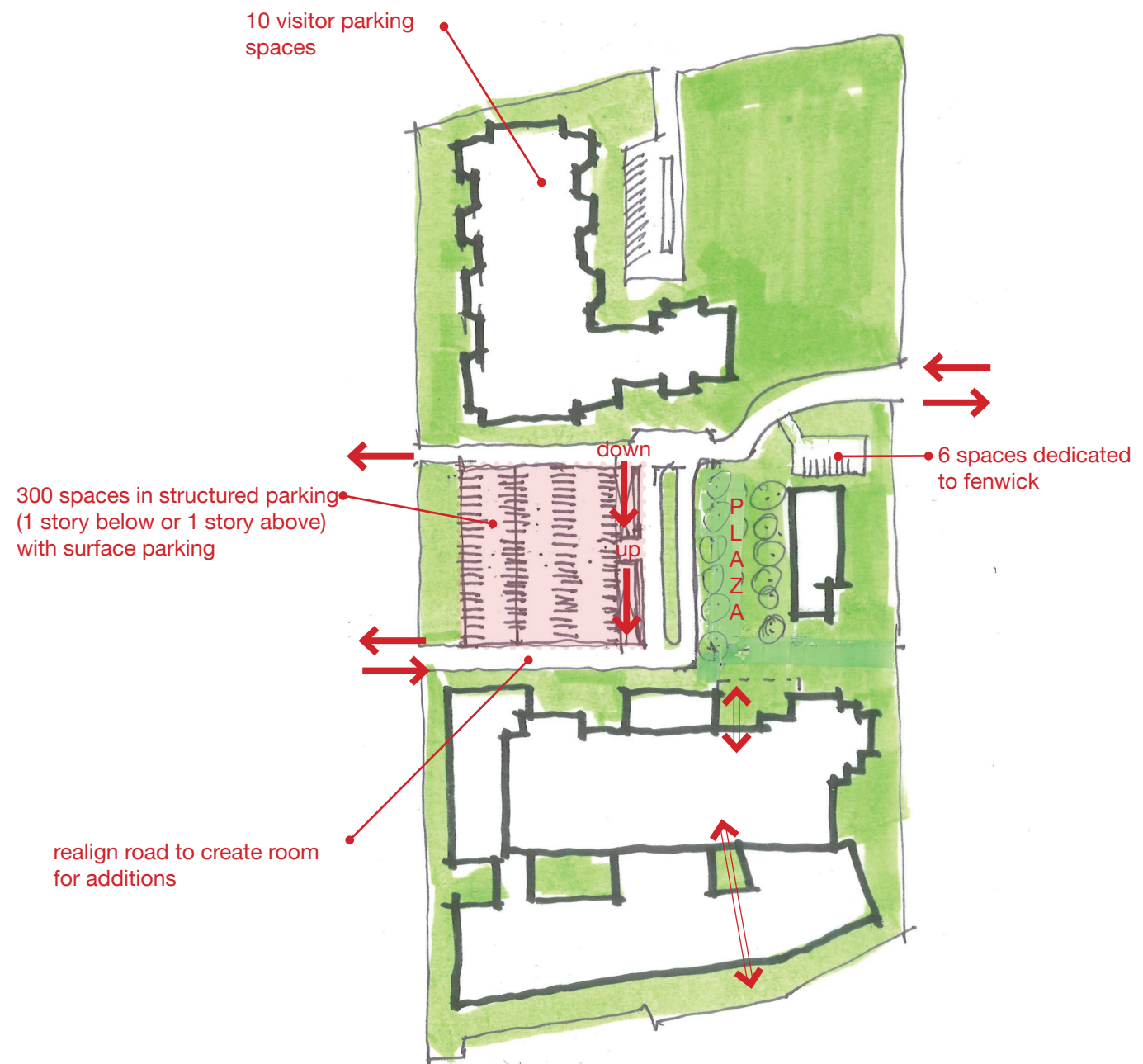
High School	260,000 GSF	260 parking spaces
Elementary School (650 pupils, 100 SF per pupil)	65,000 GSF	65 parking spaces
Fenwick Building	22,500 GSF	23 parking spaces
Library	21,500 GSF	22 parking spaces
TOTAL 370 parking spaces		
Swimming Pool	16,000 GSF	16 parking spaces (additional)





OPTION A - EXPAND SURFACE PARKING

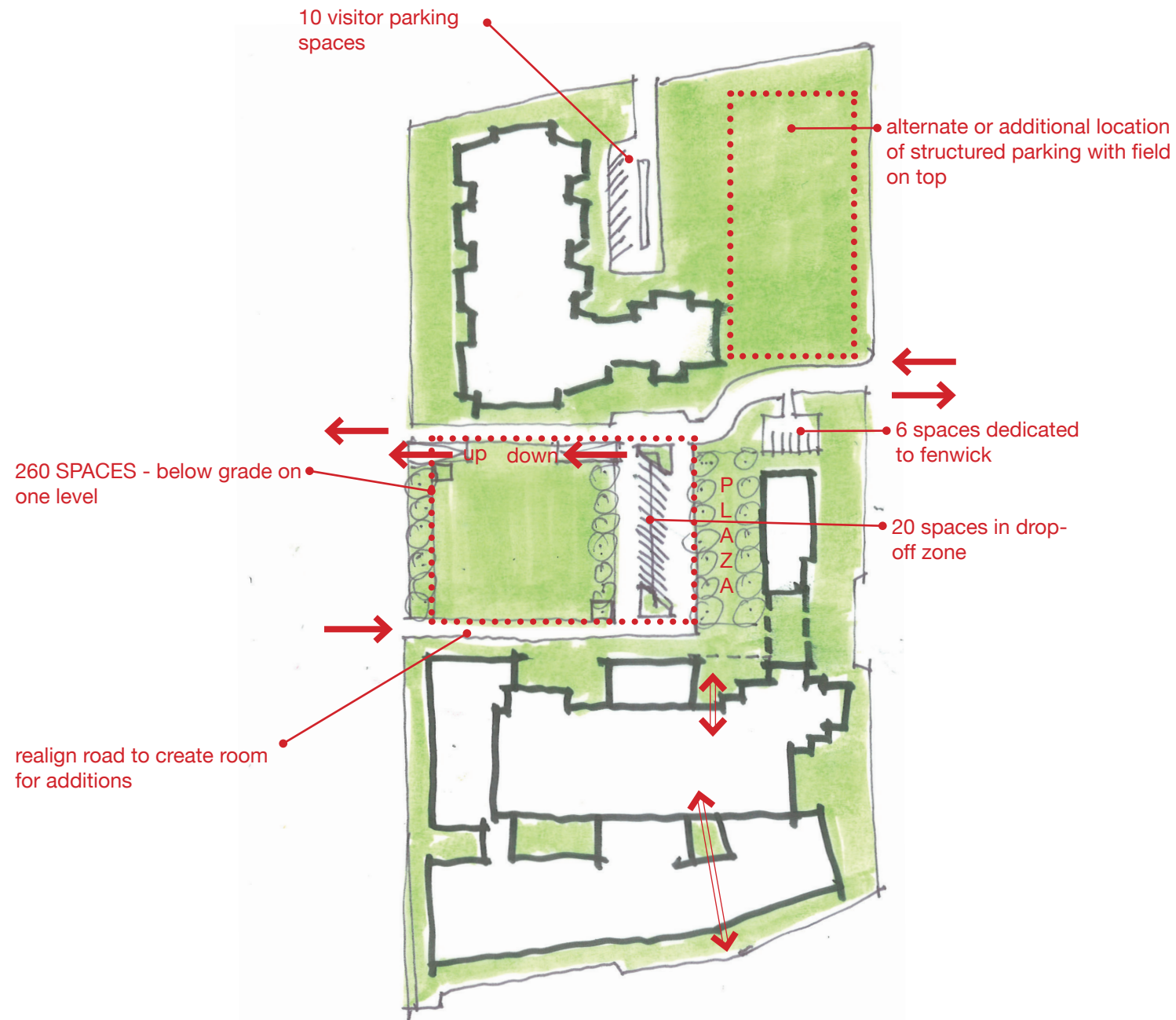
- 286 on-site spaces
- 94 spaces on street



OPTION B - SMALL PARKING STRUCTURE

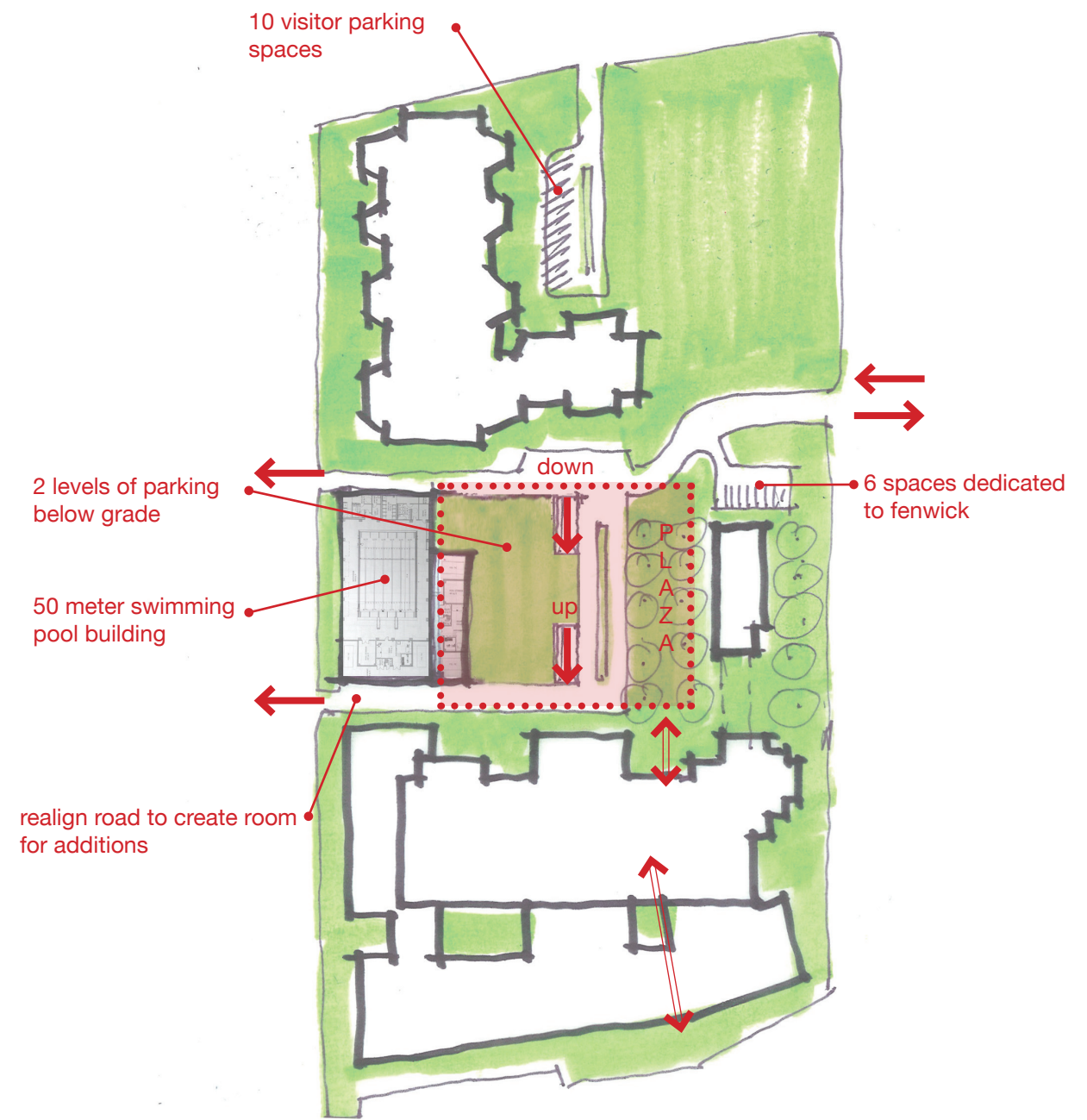
- either 1 story below grade with surface parking on top, or 1 story above grade (parking roof deck) with surface parking below.
- 150 spaces per level (300 spaces total)
- 316 total on site
- 54 spaces on street





OPTION C - LARGE PARKING STRUCTURE

- 1 story below grade with green space, plaza, or field on top
- 260 spaces below grade
- 296 total spaces on-site
- 74 spaces on street



OPTION D - POOL WITH 2 STORY STRUCTURED PARKING

- 50 meter pool
- 2 stories of below grade parking (250 spaces each level, total 500 spaces)
- 516 total spaces on-site