



Education Center Reuse Community Newsletter (February 2021)

This is the February 2021 update on the status and progress of construction for the project. All monthly updates are posted to the project website and can be accessed via the following link:

<https://www.apsva.us/education-center-reuse/>

During the month of February, construction has continued throughout the project. The general contractor, MCN Build, has been completing demolition activities throughout the building. These activities have included the removal of the cast-in-place concrete walls, ground floor slabs, existing exterior components, and parts of the existing structure. The team has continued work on critical components of the new structure including completing the foundation of the new elevator shaft, starting removal of the existing slab for the new focal staircase, and excavation of the substructure for the new shear wall. Finally, the team has progressed MEP coordination with work starting on both the ground floor slab and fourth floor ceiling. Along with construction, the project team has continued to process submittals for critical project infrastructure components.

For the remainder of the project, the project team will be occupying the entire project site which will impact the sidewalks around the Ed Center building and parking spots in the VDOT parking garage.

Alongside this project, the Washington and Liberty High School structure is undergoing a roof renovation. The crews associated with this work are utilizing space around the Education Center and Washington Liberty High School.

As a reminder the project's community liaison is Robin Hodges, Arlington Public Schools, Design and Construction Project Manager who can be reached at (703) 872-9175 or robin.hodges@apsva.us.

Jeffrey D. Chambers, NCARB, AIA, Director of Design & Construction

MAIN BUILDING UPDATE

Completed and ongoing tasks:

- Project submittal and review process (**Ongoing**)
- Abatement of Exterior Soffit (**Completed**)
- Abatement of Interior Asbestos Containing Materials (**Completed**)
- Installation of temporary building protection (**Ongoing**)
- Demolition of Existing Stairwells (**Ongoing**)
- New elevator Shaft Installation (**Ongoing, Foundation Complete**)
- Installation of below grade plumbing (**Ongoing**)
- Excavation and Installation of exterior utility trench (**Ongoing**)
- Interior framing of existing steel columns (**Ongoing**)
- Removal of Exterior Access Shoring (**Complete**)

Construction activities planned next month:

- Abatement of the Roof
- Roof Demolition (Main Building)
- MEP coordination, layout, and rough ins
- Spray Fireproofing Installation
- Curtain Wall Installation
- Shear Wall Installation
- Stair A Slab Preparation

Process related activities:

- Construction activities will continue between 7am to 9pm on weekdays and weekend work may occur periodically as needed to stay on schedule.

PLANETARIUM UPDATE

Completed and ongoing tasks:

- Monitoring/Conditioning of Interior of Planetarium (**Ongoing**)
- Layout of new facilities for Planetarium (**Ongoing**)
- Interior Protection of Planetarium Components (**Complete**)
- Abatement of Interior Asbestos Containing Materials (**Ongoing**)

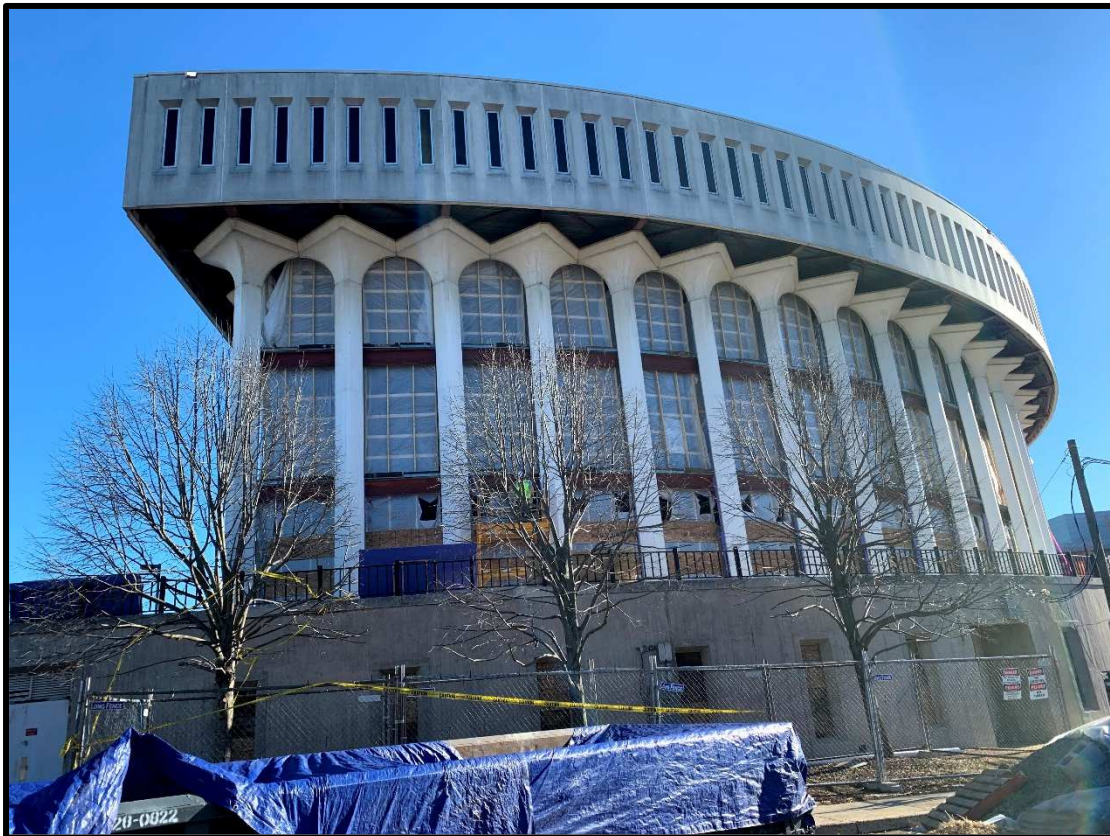
Construction activities planned next month:

- Existing Mechanical and Plumbing Work Demolition
- New Mechanical and Plumbing Work Layout

Progress Photos:



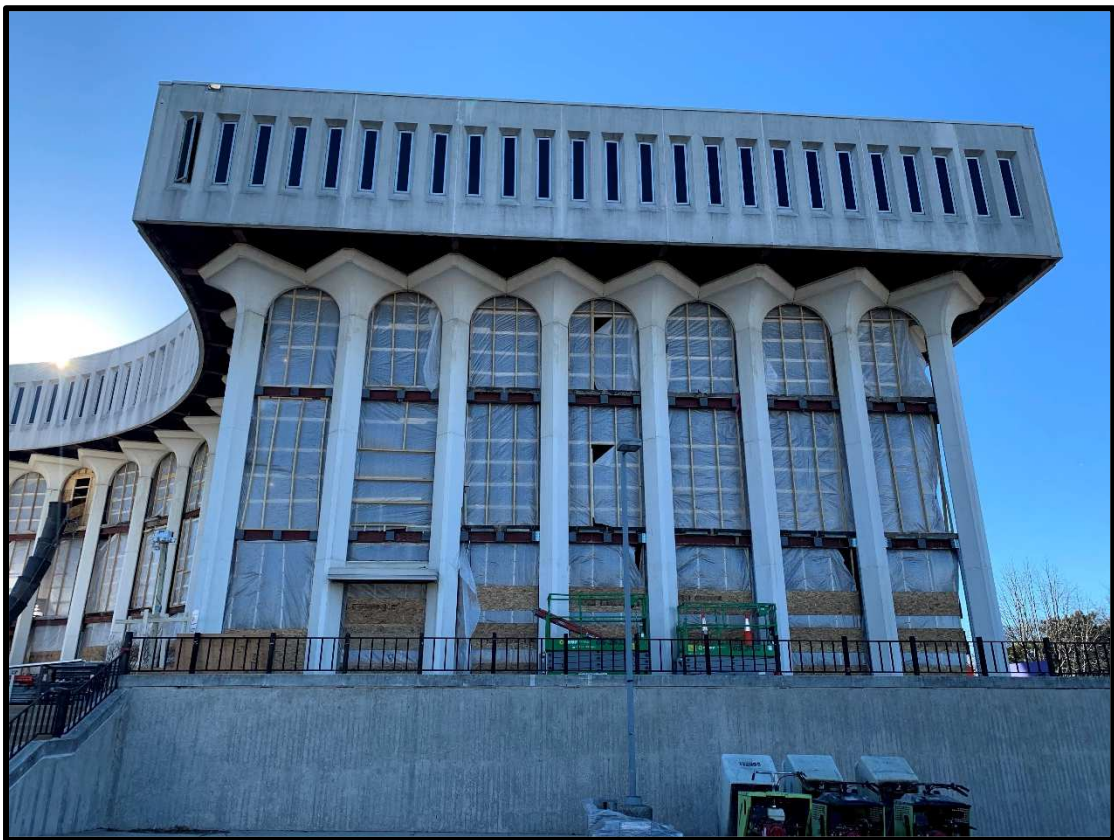
View of the Front of the Building



View of the Rear of the Building



View of the Building from Washington Liberty High School



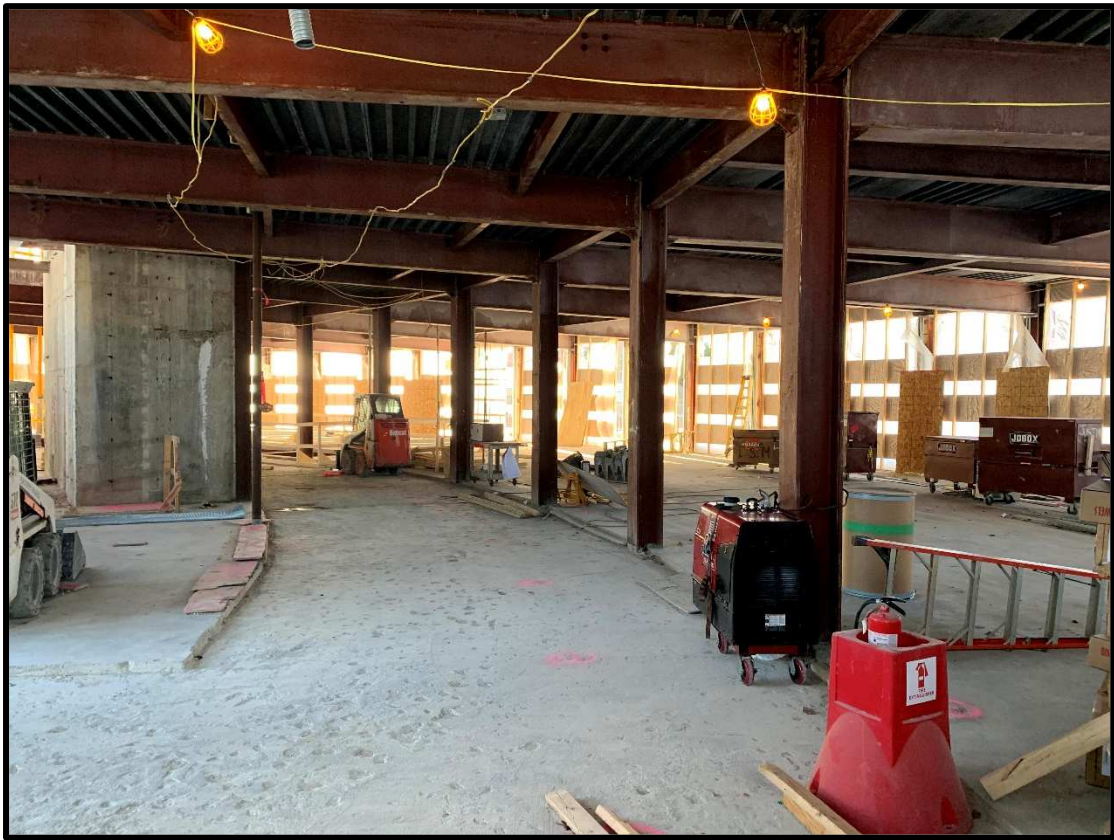
View of Exterior on East Side of Building



View of Rear of Building from Washington Liberty High School



View of Work Ongoing on the Ground Floor



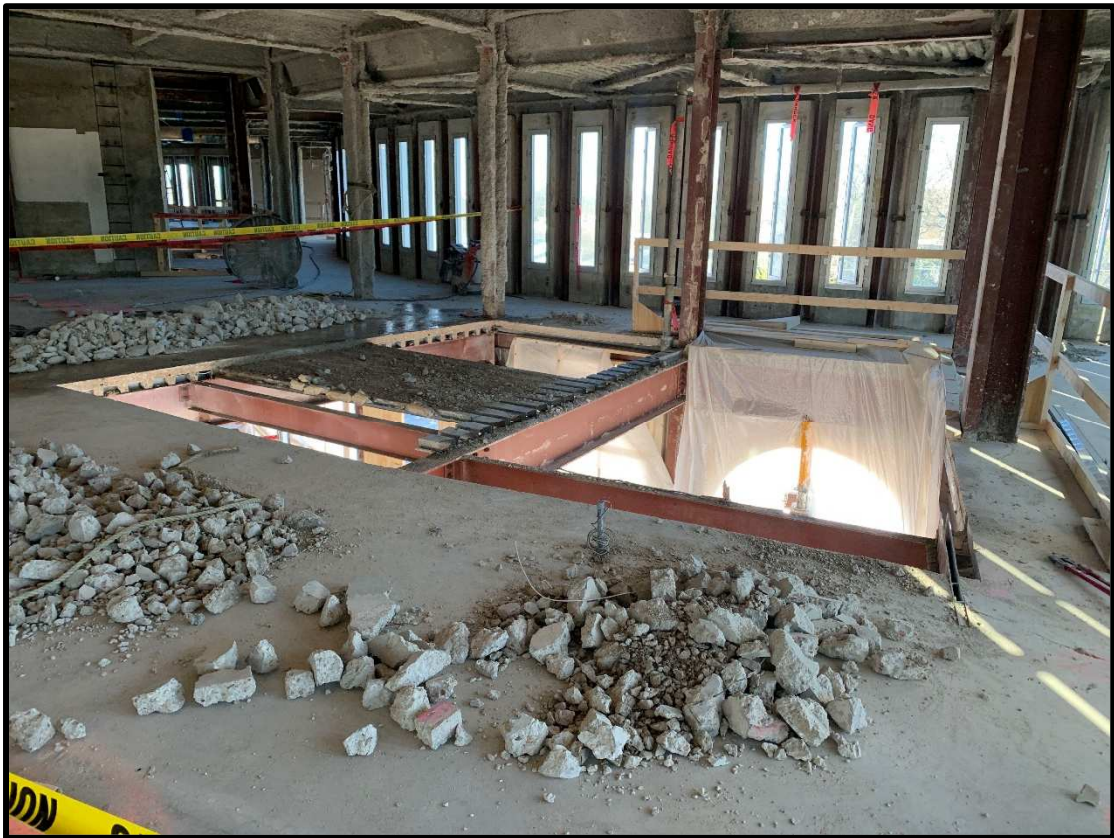
View of Work Ongoing on Level 1



View of Work Ongoing on Level 2



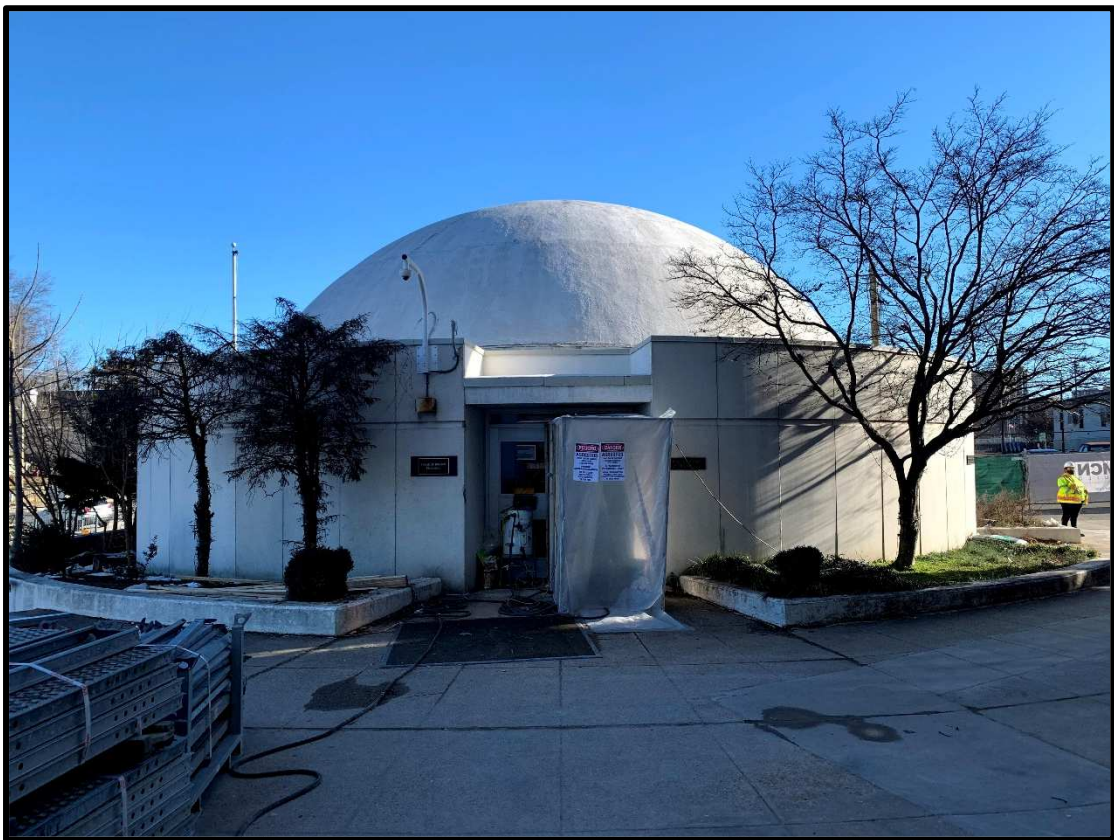
View of Work Ongoing on Level 3



View of Work Ongoing on Level 4 (New Stair Opening)



View of Working Ongoing on Roof



View of Work Ongoing at Planetarium