



Education Center Reuse Community Newsletter (January 2021)

This is the January 2021 update on the status and progress of construction for the project. All monthly updates are posted to the project website and can be accessed via the following link:

<https://www.apsva.us/education-center-reuse/>

Following the School Board's approval, APS has successfully entered into a contract to complete the Education Center Reuse project with [MCN Build, Inc](#) as the construction manager at risk.

On January 4, 2021, construction began for the project. Since beginning construction, MCN Build has been working on demolition throughout the building to accommodate the scheduled retrofit. These activities have included the removal of the original exterior windows, interior CMU and concrete partitions, roof top units, and existing stairwells. The team has also begun implementing the new elevator shaft build out including cutting new elevator openings on multiple floors and excavating the new elevator pits. Finally, the team has progressed with the removal of the balance of the asbestos containing materials from the main building. Along with construction, the project team has continued to process submittals for critical project infrastructure components.

In the coming month, the project team will be occupying the entire project site which will impact the sidewalks along General's Way and parking spots in the VDOT parking garage.

Alongside this project, the Washington and Liberty High School structure is undergoing a roof renovation. The crews associated with this work are utilizing the space in and around the Education Center Reuse project.

As a reminder the project's community liaison is Robin Hodges, Arlington Public Schools, Design and Construction Project Manager who can be reached at (703) 872-9175 or robin.hodges@apsva.us.

Jeffrey D. Chambers, NCARB, AIA, Director of Design & Construction

MAIN BUILDING UPDATE

Completed and ongoing tasks:

- Project submittal and review process **(Ongoing)**
- Abatement of Ground Floor Exterior **(Completed)**
- Abatement of Exterior Soffit **(Ongoing)**
- Abatement of Interior Asbestos Containing Materials **(Ongoing)**
- Installation of controls including tree protection, project site fencing and erosion controls **(Ongoing)**
- Demolition of Exterior Façade Components **(Complete)**
- Demolition of Existing Stairwells **(Ongoing)**
- New elevator Shaft Installation **(Ongoing)**

Construction activities planned next month:

- MEP coordination, layout, and rough ins
- Removal of Exterior Access Shoring
- Roof Demolition (Main Building)
- Spray Fireproofing Installation
- Elevator shaft footing installation

Process related activities:

- Construction activities will continue between 7am to 5pm on weekdays and Saturday work is not scheduled at this time but may occur periodically as needed to stay on schedule.

PLANETARIUM UPDATE

Completed and ongoing tasks:

- Monitoring/Conditioning of Interior of Planetarium **(Ongoing)**
- Layout of new facilities for Planetarium **(Ongoing)**

Construction activities planned next month:

- Interior Protection of Planetarium Components
- Abatement of Interior Asbestos Containing Materials
- Existing Mechanical and Plumbing Work Demolition
- New Mechanical and Plumbing Work Layout

Process related activities:

- Construction activities will continue between 7am to 5pm on weekdays and Saturday work is not scheduled at this time but may occur periodically as needed to stay on schedule.

Progress Photos:



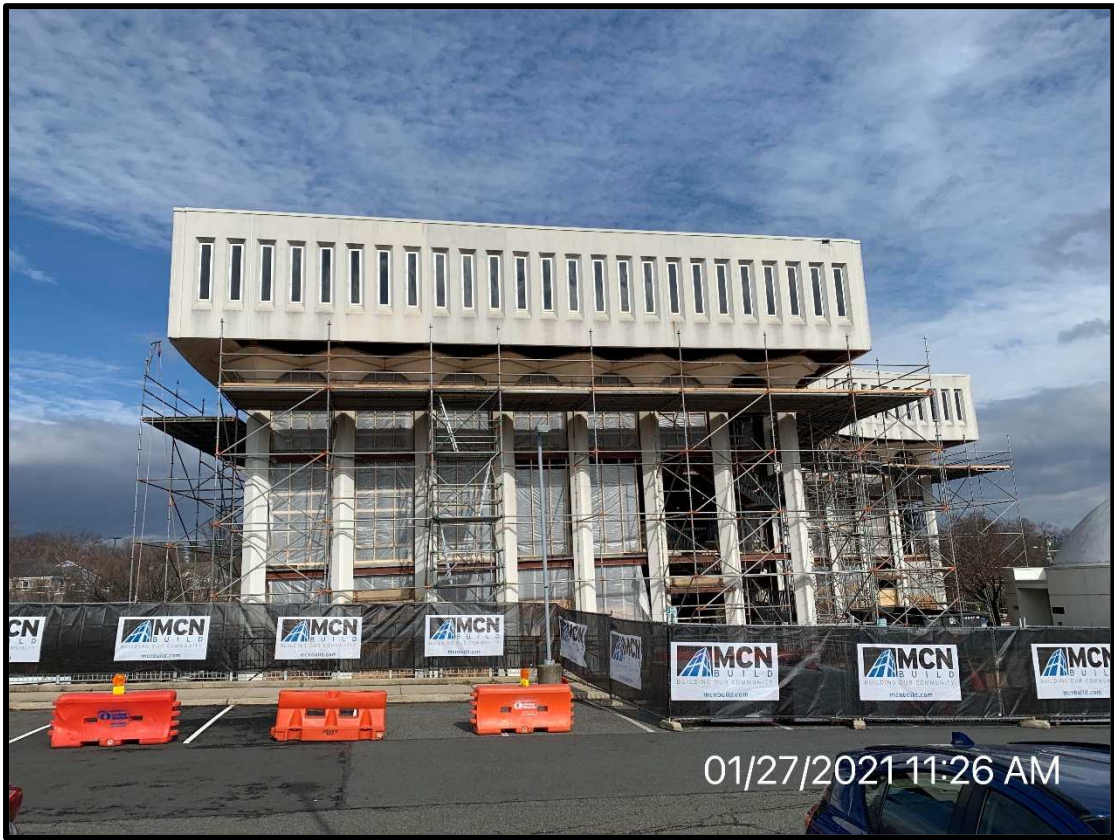
01/27/2021 11:19 AM

View of the Front of the Building



01/27/2021 11:53 AM

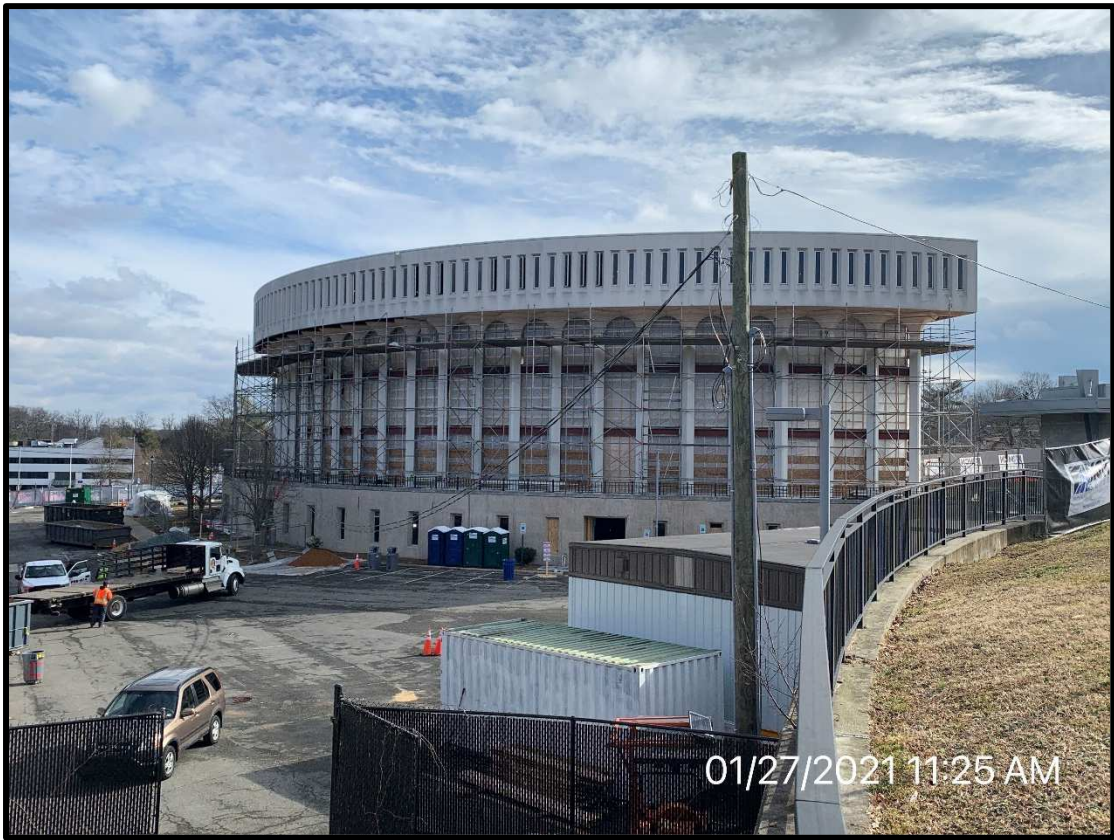
View of the Rear of the Building



View of the Building from Washington Liberty High School



View of Exterior on East Side of Building



View of Rear of Building from Washington Liberty High School



View of Work Ongoing on the Ground Floor



View of Work Ongoing on Level 1



View of Work Ongoing on Level 2



View of Work Ongoing on Level 3



View of Work Ongoing on Level 4