

The background features several abstract, hand-drawn style elements. In the top left, there is a teal shape with a black grid pattern. In the top right, a red teardrop shape with white speckles is positioned. In the center, a large teal circle with white speckles is accompanied by a smaller red circle and a black triangle. Below the text, a horizontal orange brushstroke is visible. In the bottom left, there are vertical red and teal shapes with black outlines. In the bottom right, a large orange circle with white speckles is partially overlaid by a teal and red shape, with black lines extending from it.

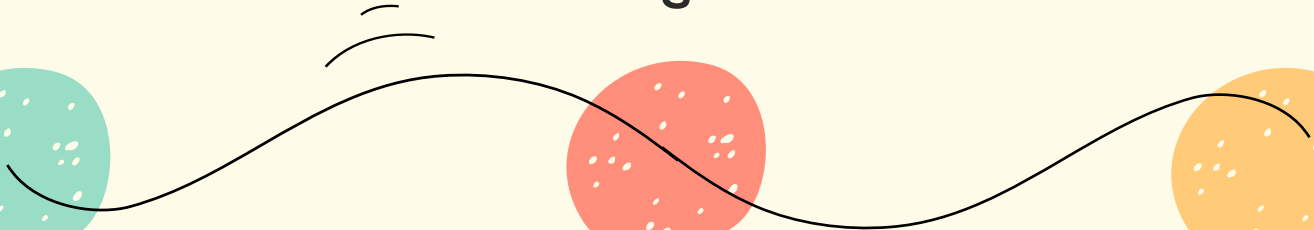
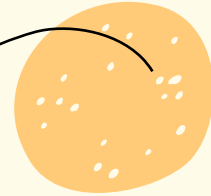
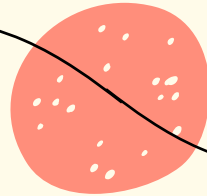
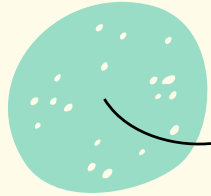
Brief Historical Overview

Neighborhoods in our attendance zone

Rosslyn

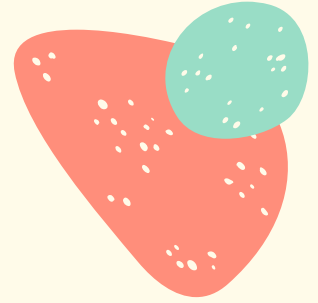
Courthouse/
Ft. Myer
Heights

Lyon Village

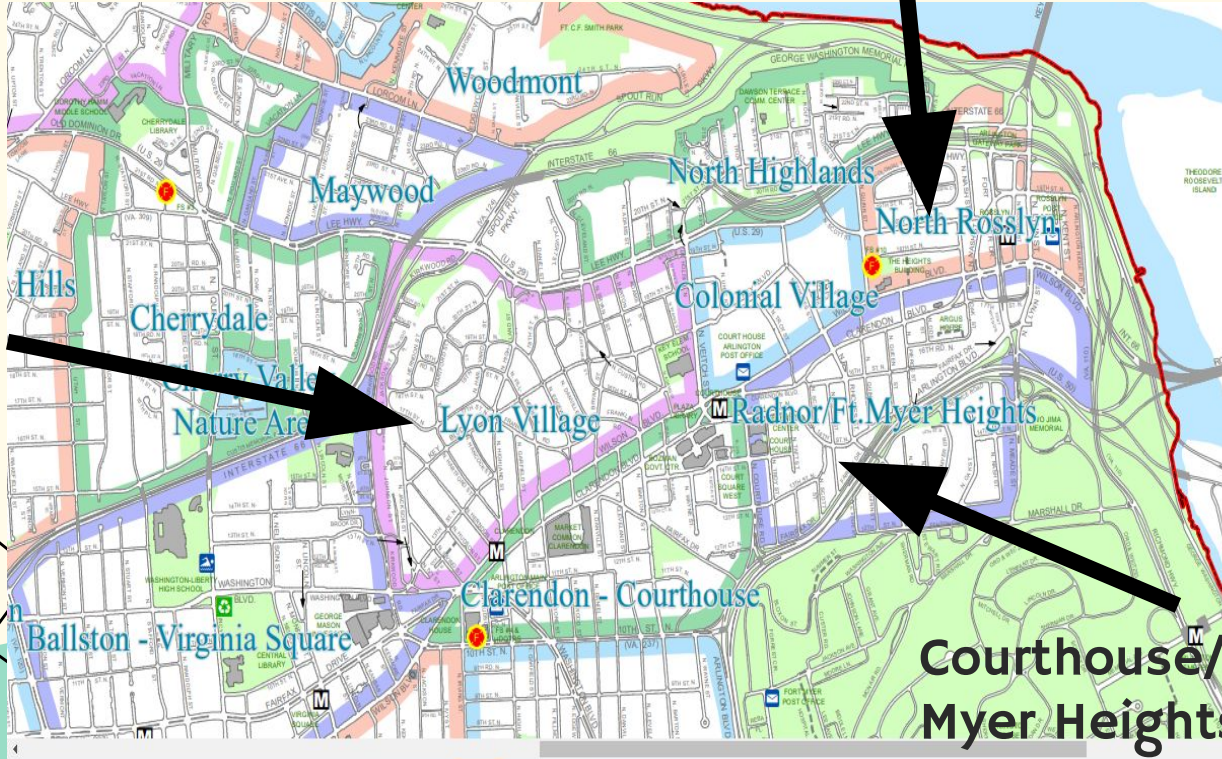


Civic Associations Map

Rosslyn



Lyon
Village

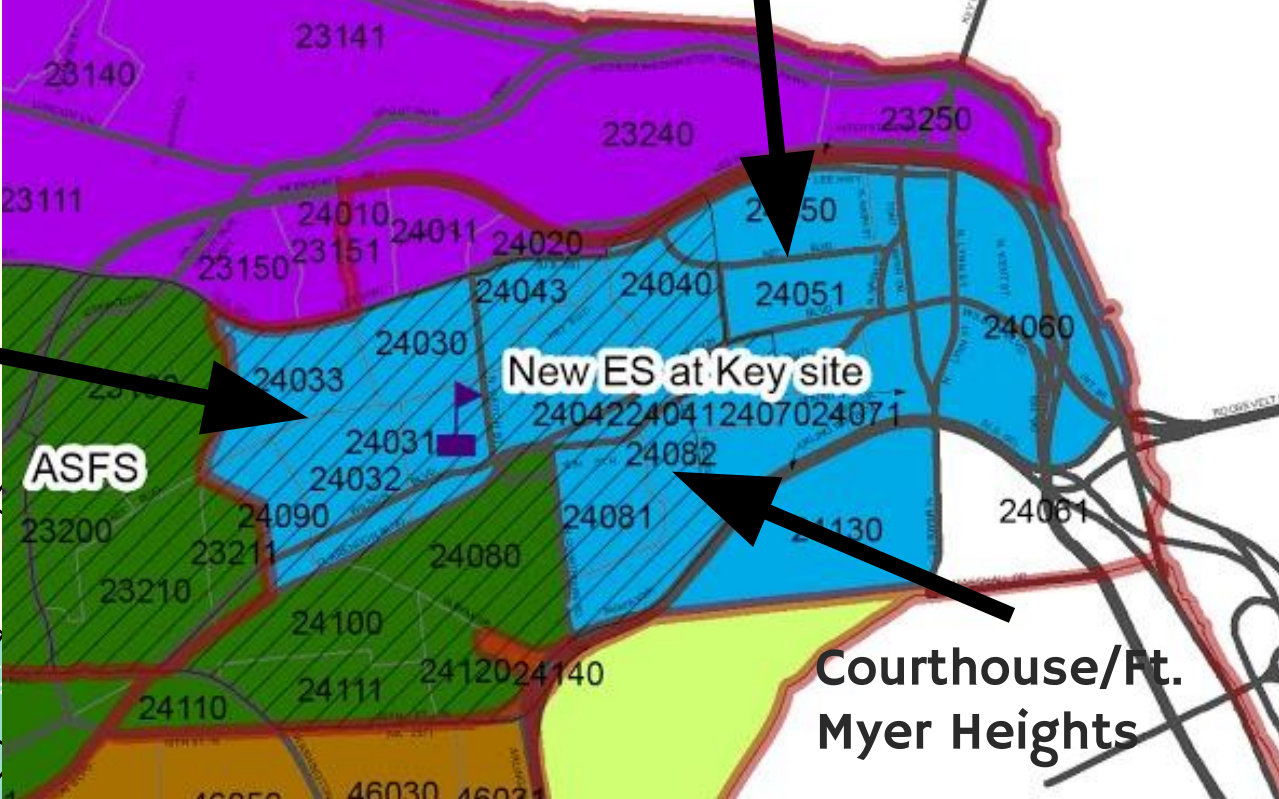


Courthouse/Ft.
Myer Heights

Boundary Map

Rosslyn

Lyon
Village



Courthouse/Ft.
Myer Heights

VERY BRIEF OVERVIEW

Rosslyn

Gateway to Arlington; Civil War fort site; somewhat unsavory past

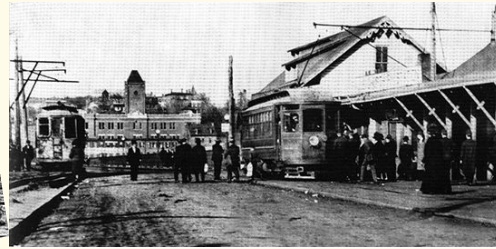
Courthouse/Ft. Myer Heights

Arlington's center of government; contains site of Fort Woodbury; monuments & views of DC

Lyon Village

Primarily residential area; built as an exclusive close-in DC suburb

ROSSLYN



ROSSLYN

- The eastern end of the school boundary zone. Mixed use development and an urban feel. The gateway to Arlington from DC.
- History dates back to colonial times when it was a ferry port.
- Site of Fort Corcoran during the Civil War.
- Arlington's "Red Light" district in the late 19th century.
- "Cleaned up" and became a transportation hub in the 20th century

COURTHOUSE/FT. MYER HEIGHTS



COURTHOUSE/FT. MYER HEIGHTS

- The middle of our boundary zone. Mixed use development.
- Began as a rural area
- Site of Fort Woodbury during the Civil War.
- At turn of 20th century, it was chosen as the seat of government - the courthouse was built
- Colonial Village was one of the first garden style apartment complexes in the USA
- Marine Corps Memorial (Iwo Jima) and Netherlands Carillon are here

LYON VILLAGE

LYON VILLAGE
Midway between the business section of Washington and the Washington Golf and Country Club via the Arlington Memorial Bridge: a new minute drive through Federal Parks and Reservations over Washington's Finest Boulevard Approaches.



Alignment at the map shows you how conveniently important points may be reached over the new Memorial Bridge or the Key Bridge, but it cannot give you any idea of the ALTITUDE, BEAUTY and PICTURESQUENESS of

LYON VILLAGE

Here, in Washington's best climate, in the shade of mature trees and dipping lawns, beautiful parks are being provided, fully equipped for the enjoyment of children.

Clear proximity to downtown Washington insures the owners of an increasing property value. Bus lines and electric cars insure access to all activity.

Drive out and see how quick the approach, and how attractive these homes in a charming "Old Virginia" style.

FOR INSPECTION CALL
LYON & FITCH, INC.

1914-1915



LYON VILLAGE

- The western end of the school boundary zone. Mostly residential.
- Land originally belonged to George Mason and his family
- History of the neighborhood dates back to early 20th century.
- Founded by Frank Lyon as close-in suburb for those who worked in DC
- Restrictions in neighborhood were response to safety and morality concerns in other parts of Arlington



To learn more

There are resources linked in the agenda to learn more about these three areas. Choose one to read/watch before our small group sessions.



THANKS



CREDITS: This presentation template was created by **Slidesgo**, including icons by **Flaticon**, and infographics & images by **Freepik**

Please keep this slide for attribution

