



Dorothy Hamm Middle School Community Newsletter (September 2020)

Completed and ongoing tasks:

Addition

- Partition wall installation on the 1st floor is complete with the feature wall complete except for punch list painting;
- Installation of exterior doors is nearly complete;
- Installation of exterior copper panels is nearly complete;
- Installation of the mockup classroom space in the addition is nearly complete;
- Overhead mechanical, electrical, and plumbing work is nearly complete;
- The auxiliary gym and associated athletic equipment installation are complete except for final gym striping;
- Installation of permanent interior light fixtures is complete;
- Roof system installation is complete;
- Science classroom build out is complete and installation of equipment ongoing;
- Floor covering installation is nearly complete;
- Installation of green roof is nearly complete;
- Interior connections between the old and new school buildings are nearly complete;
- Installation of new technology outlets, devices, and infrastructure is nearly complete;
- Final painting of classrooms, corridors, and bathrooms is nearly complete;
- Installation of new technology wall and components throughout the school is nearly complete;
- Build out of main school entrance vestibules is nearly complete with ADA push buttons being installed, and
- Curtain wall installation is nearly complete since the delivery of the fritted glass earlier this month.

Renovation

- Work on the classrooms in infilled stairwell near the addition is complete;
- Installation of brick façade on west, rear side of building, is complete;
- Work on the new counseling suite of rooms is nearly complete;
- Work on the addition of the new portals to the addition is nearly complete;
- Work on the 3rd floor teacher collaboration suite is complete;
- Work on the new public restroom is nearly complete;
- Installation of the new outdoor custodial spaces is nearly complete; and
- Interior punch list work is ongoing.

Site Improvements

- Coordination for the Vacation Lane and Old Dominion off-site street work is ongoing with Dominion Energy and Arlington County with final permits approved;
- Construction of exterior building bio retention structures is ongoing with many being nearly complete except for plantings;
- Installation of trees, plants, and shrubs is ongoing;
- Installation of dry utilities as well as sidewalk along Vacation Lane is nearly complete with the new raised crosswalks ongoing;
- Installation of site furnishings is ongoing around the addition;
- Installation of access sidewalks, stairs, and plazas is nearly complete;
- Installation of the new front and rear plazas is nearly complete;
- Installation of new below grade utility conduits is nearly complete; and
- Installation and fabrication of the historical trail memorial path is ongoing.

Construction activities planned next month:

- Addition achieving both partial occupancy and substantial completion;
- Completion of the main roof and green roof;
- Build out of new storage rooms around the cafeteria;
- Build out of final section of new roofing;
- Installation of overhead and in-wall mechanical, electrical, and plumbing;
- Creation of addition and site punch list;
- Installation of new grass seed;
- Installation of classroom flooring and casework; and
- Completion of site concrete work.

Process related activities:

- Construction activities will continue between 7am to 5pm on weekdays for the Addition and Renovation areas. Saturday work is being performed as needed for both the Renovation and Addition scopes of work. The site work for the improvements along Vacation Lane will cause disruptions to traffic. Those disruptions/changes will be shared with the community, in more detail, closer to their anticipated occurrence.

[TO SEE 3D RENDERINGS OF THE CURRENT PROJECT CLICK HERE](#)

Progress Photos:



View of the front of the school addition



View of the west elevation of the addition



View of the south elevation of the addition



View of first floor main corridor



View of new auxiliary gym area



View of new health room on first floor



View of new library space



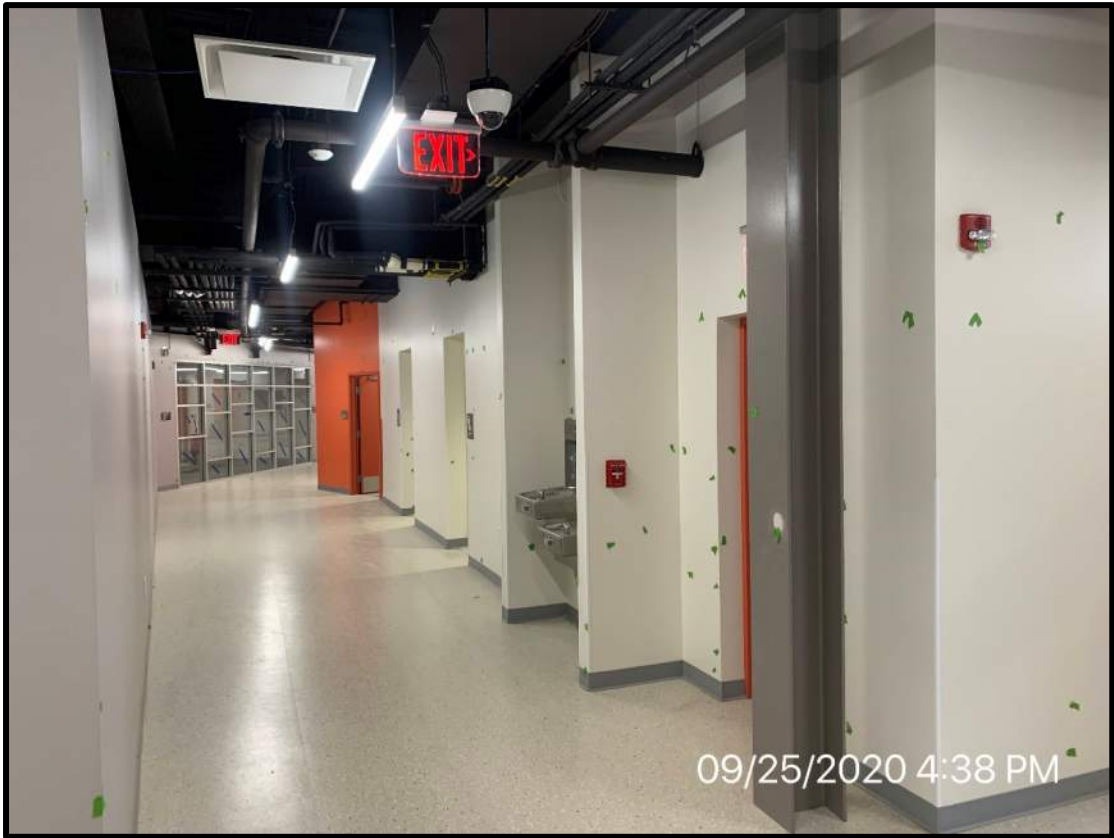
View of new student commons area



View of new connection between new and existing parts of the school



View of teacher preparation room



View of second floor corridor looking North



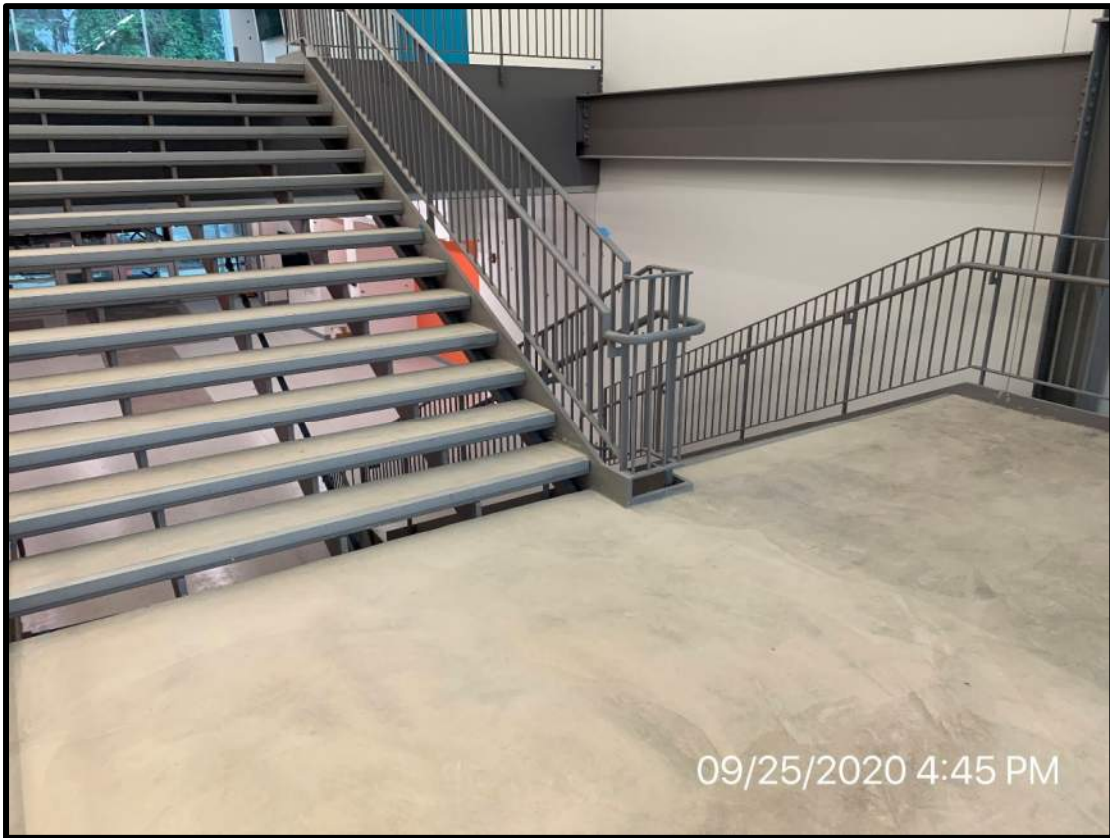
View of third floor corridor at monumental stair top



View of third floor corridor



View of science classroom



View of monumental staircase infilled pan decks



Installation of new acoustic panels in the orchestra/vocal room



View of new roof and rainscreen installation



View of historical trail sidewalk installation



View of new bicycle storage room for teachers



View of new ADA ramp at main entrance to school