

The 3 P's
to maximize your
Internet speeds:



Placement

Put your router in a
central location.



Performance

Check your router
regularly to ensure
optimal performance.



Power

Turn off or disconnect
devices and apps you're
not using so they don't zap
WiFi bandwidth.



Placement: Find your router's
sweet spot to broadcast the
strongest signal.

Tips to avoid interference

Keep your router away from large metal
objects and electronics like microwave ovens,
cordless phones and Bluetooth devices.

Also, avoid crowded spots, such as inside or
behind furniture. And keep in mind, the closer
you are to your router, the better your WiFi
performance can be.

Easy ways to check signal strength

Free apps like [Wi-Fi Sweetspots](#) or [Wi-Fi Maximiser](#) can identify the strongest possible
signal in the areas where you use wireless
devices most often. To check signal strength
with a PC or Mac, try software like [inSSIDer](#)
or [Xirrus](#).

If you are using XFINITY equipment, your setup may
use a Wireless Gateway or a cable modem and router
combination. For simplicity throughout this guide,
"equipment" or "router" applies to both setups.

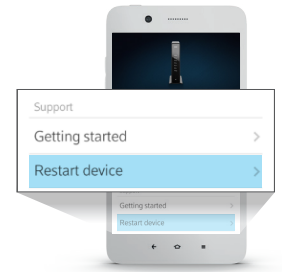
Some features vary depending on equipment.



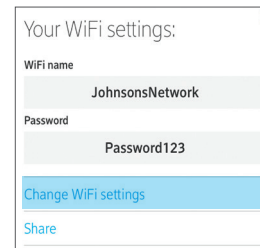
Performance: Reap the rewards
when you give your router a
little TLC.

Restart your WiFi equipment regularly

Software updates improve your Internet performance,
so restart often to ensure that your router is up-to-
date. And don't worry – your saved settings will
still be there. To restart or troubleshoot your
connection, use the [XFINITY My Account app](#).
Or go to xfinity.com/reboot for more information.



Restarting via XFINITY
My Account app.

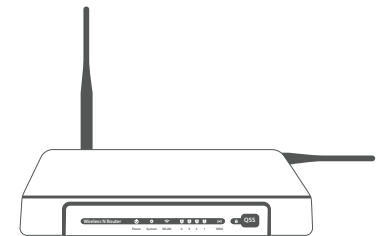


Manage your WiFi settings

You can also use the [XFINITY My Account app](#)
to view or change your in-home WiFi name
(SSID) and WiFi password (network key). Go
into "WiFi settings" to view and select "Change
WiFi settings" to update.

Adjust your router's antennae

If you are not using an XFINITY router,
and your router has antennae, adjust one
vertically and one horizontally to pick up
the best signal.



For customers who are
using their own router.

Give your router the best seat in the house.

1

Place your router in a
central location, off the
ground, out in the open.

2

Keep your router away
from windows, which
interfere with the signal.

3

Keep your router
off the floor.

4

Keep your router away
from other electronics or
thick walls and surfaces.

5

Place your router on a
main floor, not the attic
or basement.



Power: Keep all your devices running at optimal speed.

Plug stationary devices directly into your router

Whenever possible, plug gaming consoles, streaming video devices and desktop computers into your router using an Ethernet cable. This frees up WiFi bandwidth for other devices.

Turn off devices and apps you're not using

Active devices can interfere with your router, using valuable bandwidth. And while turning off mobile apps when they're not in use doesn't impact your WiFi performance, it may help the device work more effectively.

Manage who can use your network

Prevent outsiders from using your signal by creating a customized, easy-to-remember WiFi name (SSID) and WiFi password (network key) through the XFINITY My Account app.

Get even more out of XFINITY.

With the XFINITY WiFi app – download for FREE

- Find hotspots nearby
- Connect automatically to XFINITY WiFi hotspots
- Get access to the latest security features
- Connect to the right network at home, work or on the go



At xfinity.com/internethelp

- Find your WiFi name (SSID) and WiFi password (network key)
 - Connect your devices to the network
 - Get tips to improve signal strength, stay connected and more
-

Fill in your information below for a quick reference.

WiFi Name (SSID): _____ WiFi Password: _____

If you change your WiFi name or WiFi password, please remember to update here. You can also find this information with the My Account app. Just log in, navigate to Internet, and then tap Show WiFi settings. Your WiFi name and password will be displayed.

Restrictions apply. Actual speeds vary and are not guaranteed. WiFi hotspots available in select areas. Standard rates may apply to app usage. Check with your carrier. © 2016 Comcast. All rights reserved.