

Advisory Council on Teaching and Learning

Let's Dive into Teaching and Learning!

Introduction to the ACTL

Advisory Council on Teaching and Learning (ACTL) Basics

What is ACTL?

- What does ACTL do?
 - ACTL structure
-

ACTL Representative Role

ACTL Department Committee Role

Why is ACTL Important?

Final Thoughts and Questions

What is ACTL?

Primary Role & Purpose of ACTL

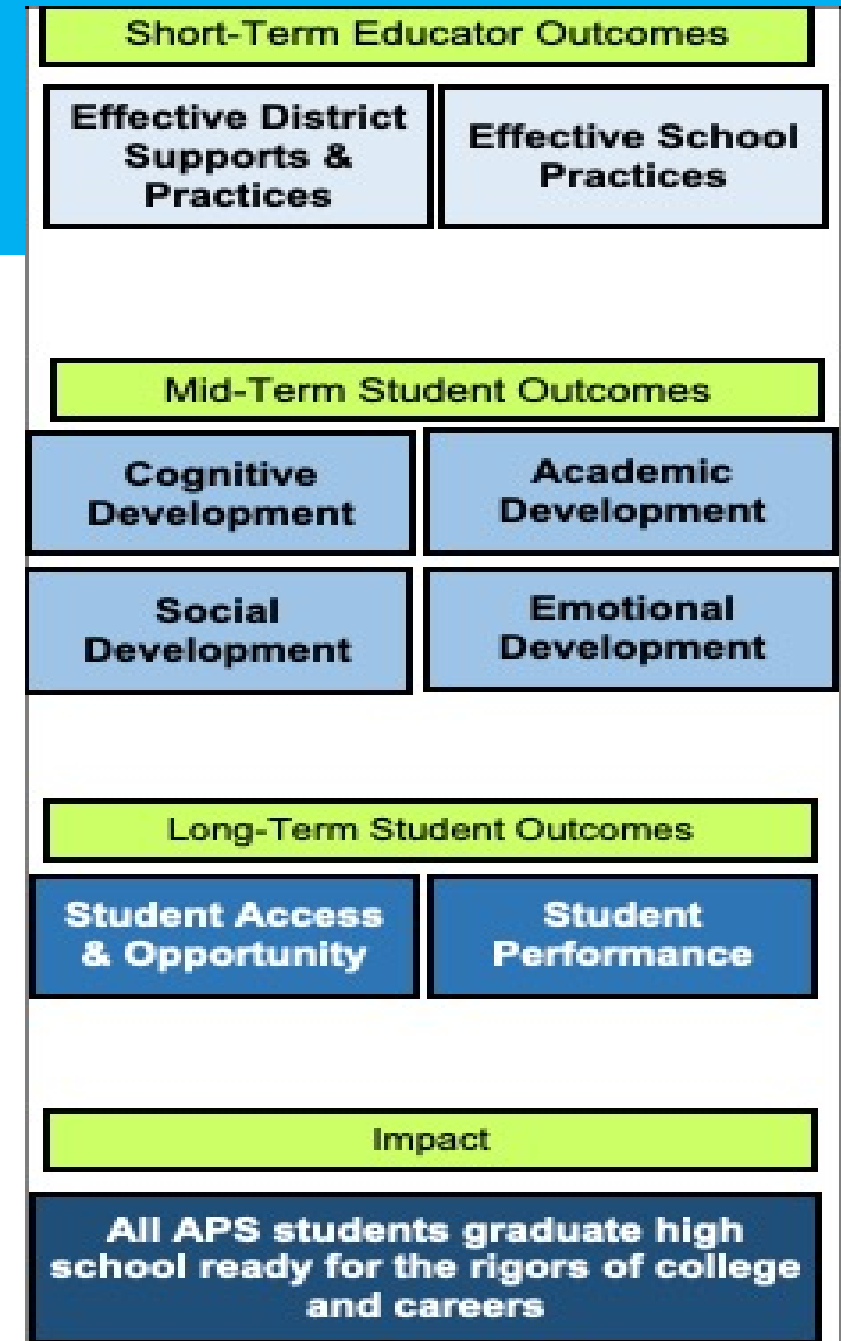
- **The Advisory Council on Teaching & Learning (ACTL)** is made up of representatives from each school and certain community organizations to assist in reviewing the system-wide curriculum and instructional program and in developing recommendations for improvement.
- **ACTL is made up of 40 to 50 individuals** who are familiar with or interested in instructional issues. Fourteen DTL department focused advisory committees report to ACTL annually.
- Over the years, **ACTL has spearheaded some important changes** in the Arlington Public Schools curriculum. (Source: <https://www.apsva.us/actl/>)
- **ACTL helps bring parent and community voices to the table** to share valuable input to the Department of Teaching and Learning, Superintendent, and School Board about student learning and outcomes.

How can we improve outcomes for all students?

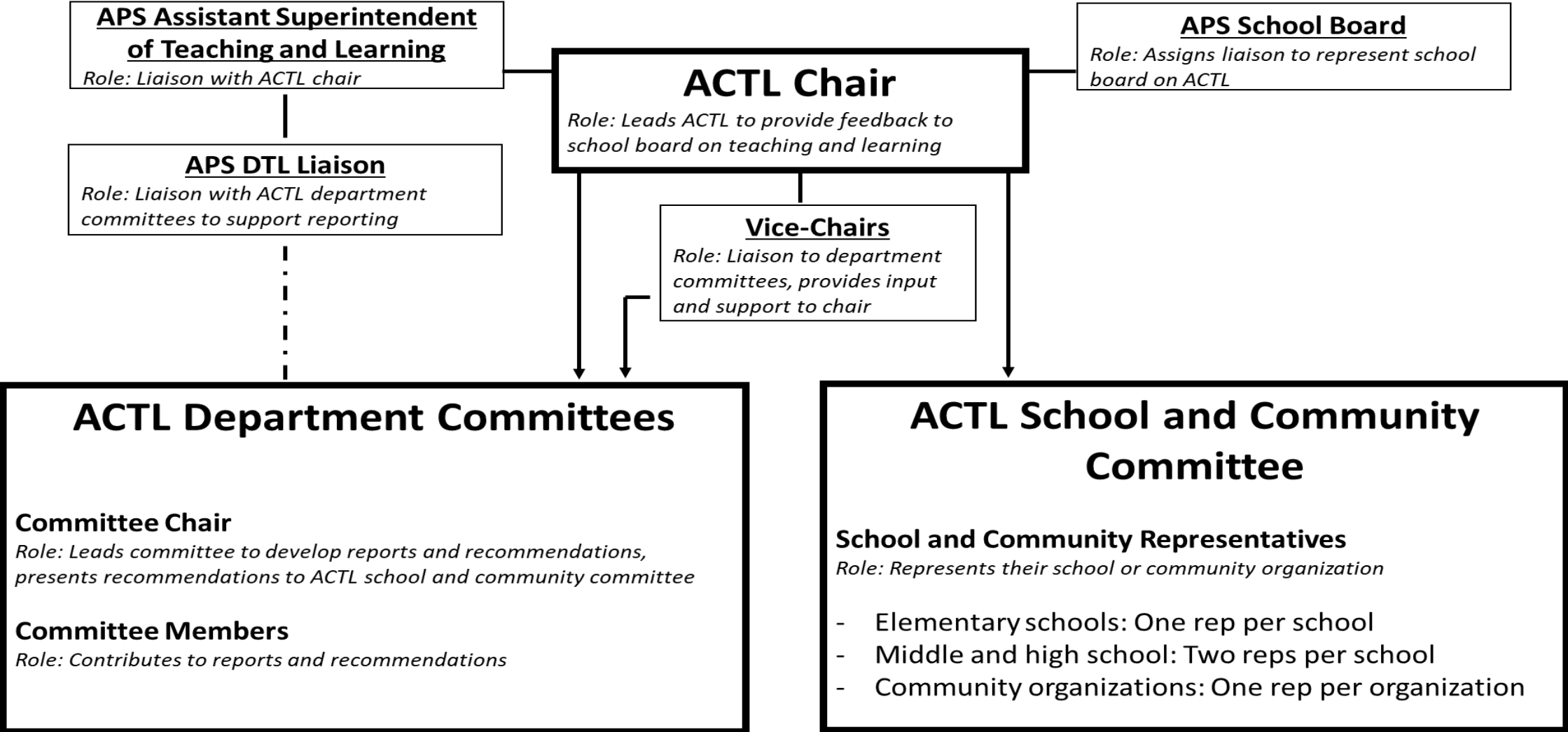
Making sure that we have:

1. Effective district supports and practices
2. Effective school practices
3. Consistency and accountability

How can ACTL be the most impactful in helping to ensure APS has effective district supports and district/ school practices?

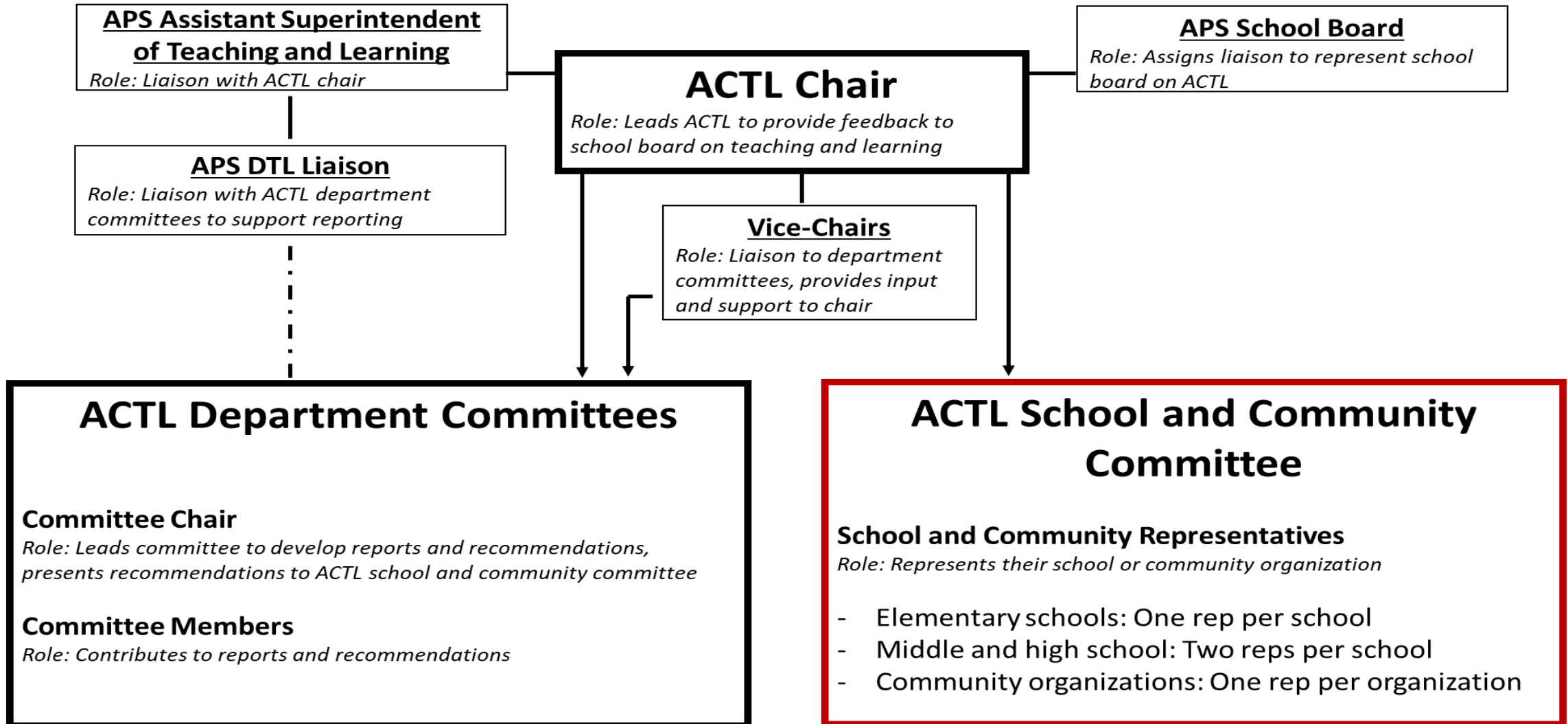


ACTL Organizational Chart

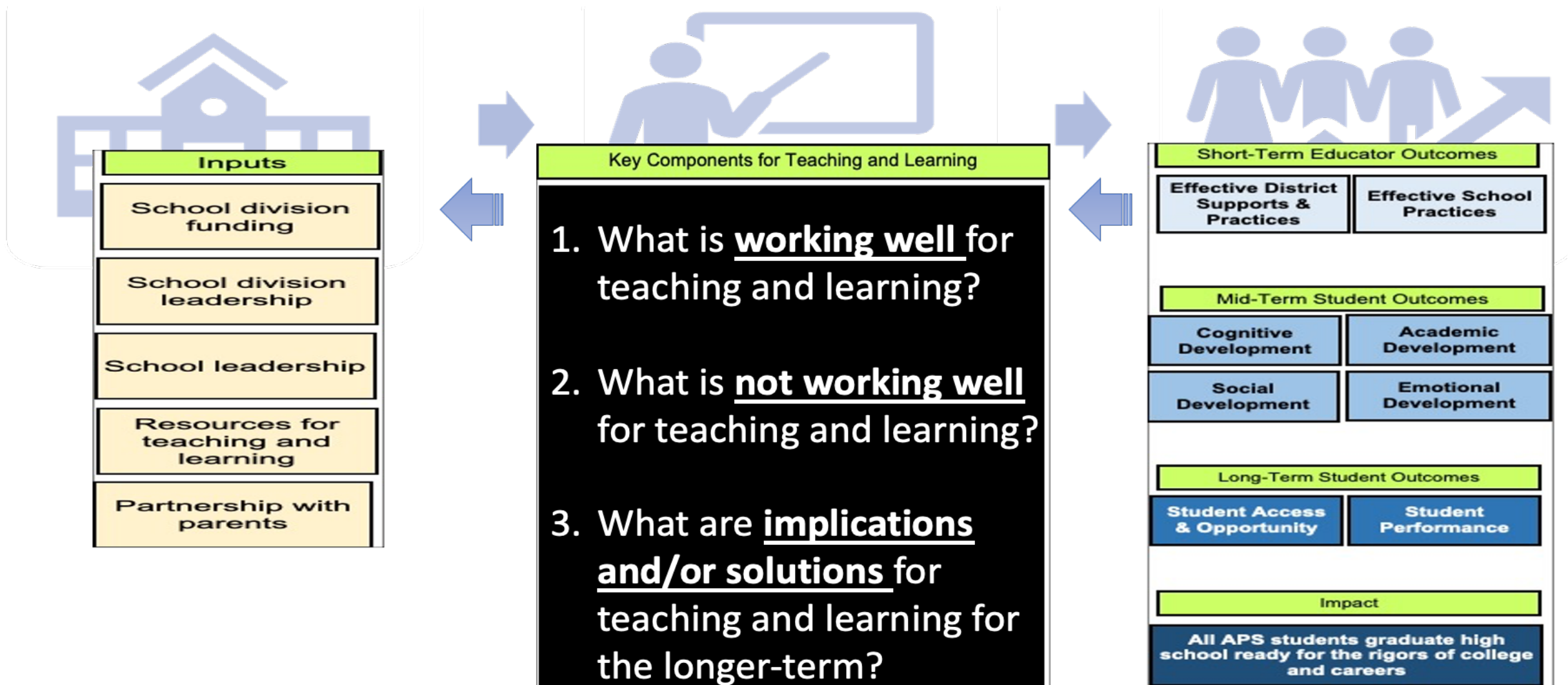


Your Role as an ACTL School or Community Representative

Your Role as a School or Community Representative

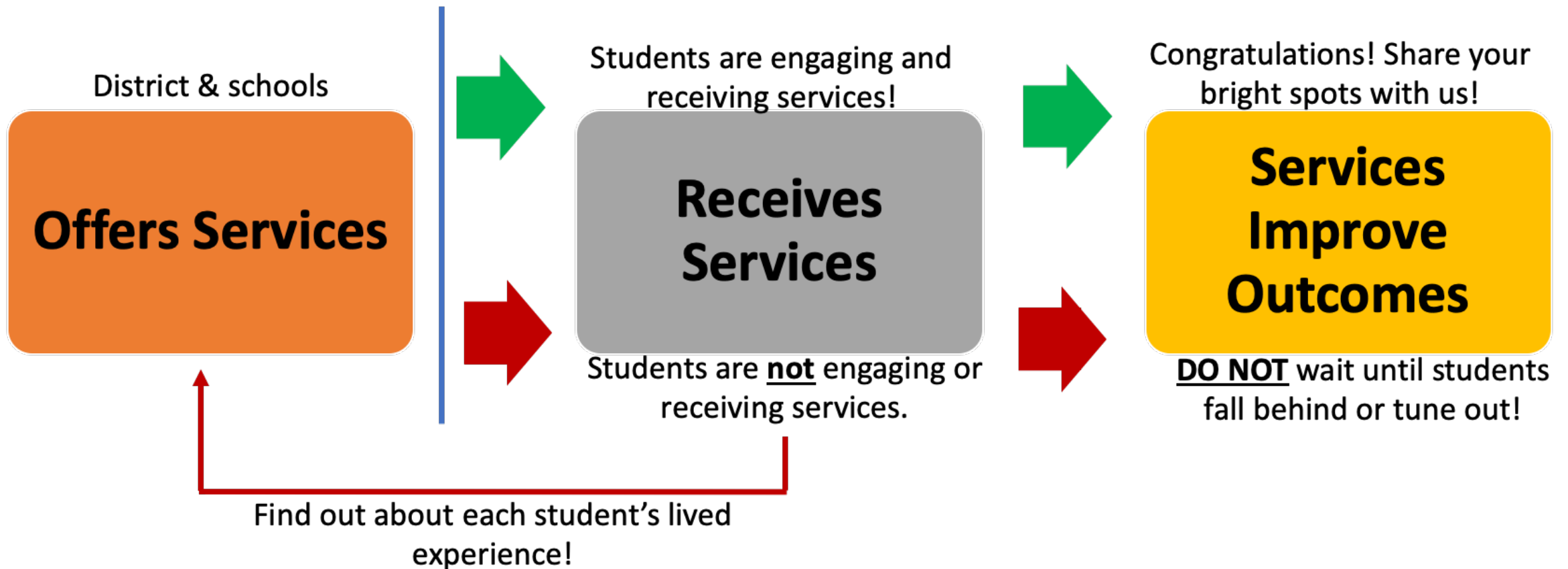


How can ACTL be most impactful: Be part of the improvement feedback loop



Go Beyond the Blue Line:

Focus on getting information about the receipt of services



Your Responsibilities as a School/Community Representative

Get to know the teaching and learning context of your school or community

- How are students doing with access & opportunity?
- How are students doing with mastery of content?
- Are all students being supported in their cognitive, academic, social and emotional development?

Various School Data includes:

- Virginia Department of Education: [School Quality Profiles](#).
- Arlington Partnership: [Your Voice Matters](#) survey.
- You: Talk to students and parents in your school. Conduct empathy interviews to better understand the learning context for all students.

Short-Term Educator Outcomes

Effective District Supports & Practices

Effective School Practices

Mid-Term Student Outcomes

Cognitive Development

Academic Development

Social Development

Emotional Development

Long-Term Student Outcomes

Student Access & Opportunity

Student Performance

Impact

All APS students graduate high school ready for the rigors of college and careers

ACTL School and Community Committee Meetings

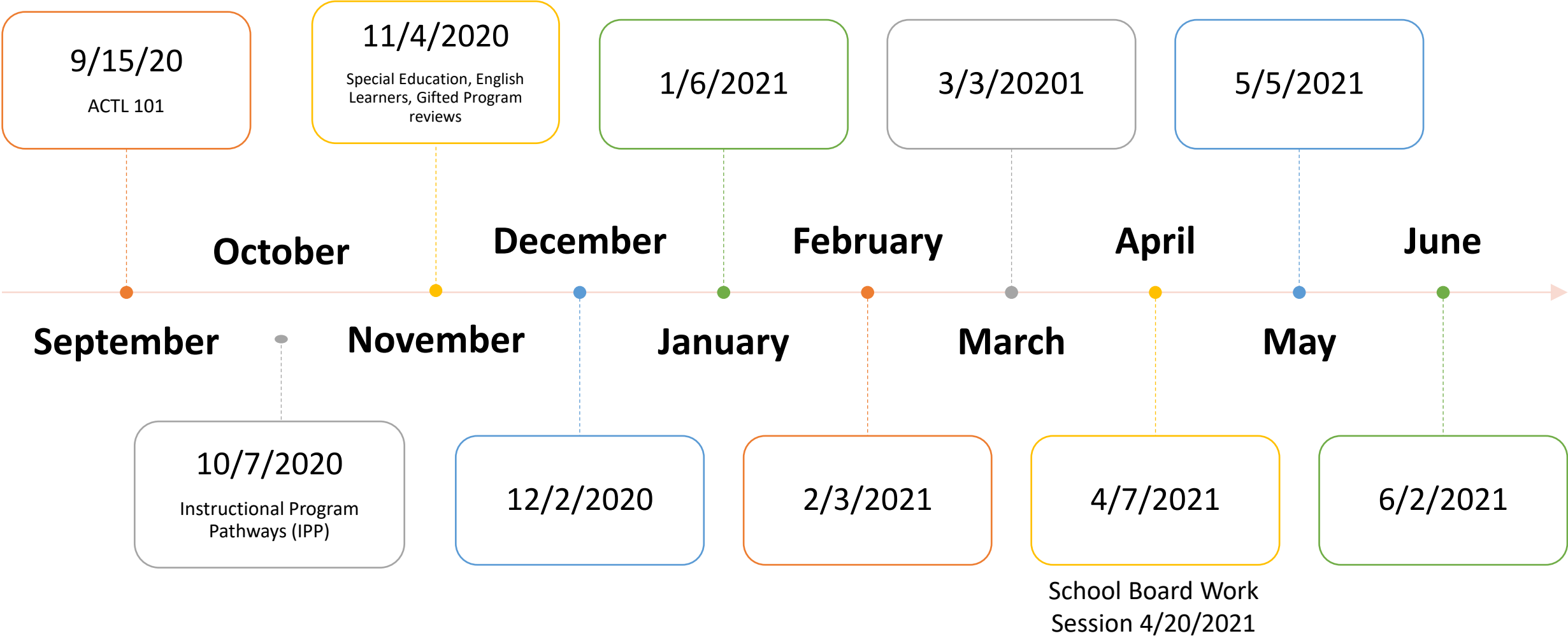
- **Meet 1st Wednesday of each month** – currently 7-8:30pm via ZOOM
- **Materials will be provided one week** prior to the meeting
- **Learn about what APS is doing** in teaching and learning
- **Bring information and data** on how students and parents in your school or community are doing
- **Provide feedback on ACTL Department Committee progress** memos on what's working, what's not working, and recommendations
- **Ask for time each month on your PTA agenda!** You represent your entire school community.



Pro-tip! Come prepared to provide feedback by collecting information from your school or community

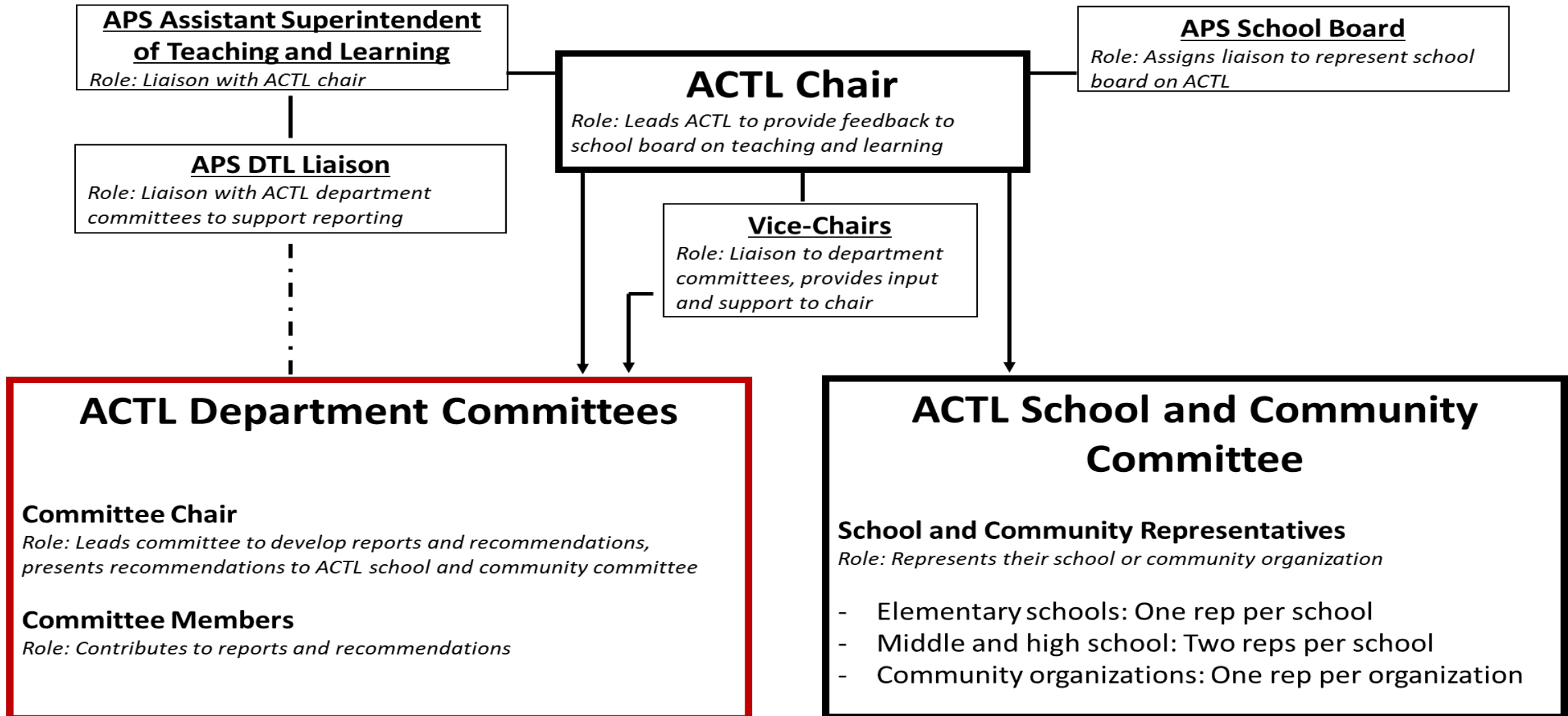
ACTL Schedule for 2020/21

(1st Wednesday of each Month)



The Role of ACTL Department Committees

Your Role as ACTL Department Committees



14 Department Committees

- 1. Advisory Council on English Learners**
- 2. Arts Advisory Council**
- 3. Arlington Advisory Council on Special Education**
- 4. Career, Technical & Adult Education**
- 5. English Language Arts Advisory Committee**
- 6. Early Childhood Advisory Committee**
- 7. Equity & Excellence Advisory Committee**

- 8. Gifted Services Advisory Committee**
- 9. Math Advisory Committee**
- 10. Science Advisory Committee**
- 11. Social Studies Advisory Committee**
- 12. School Health Advisory Board**
- 13. Advisory Committee on Student Services**
- 14. World Language Advisory Committee**

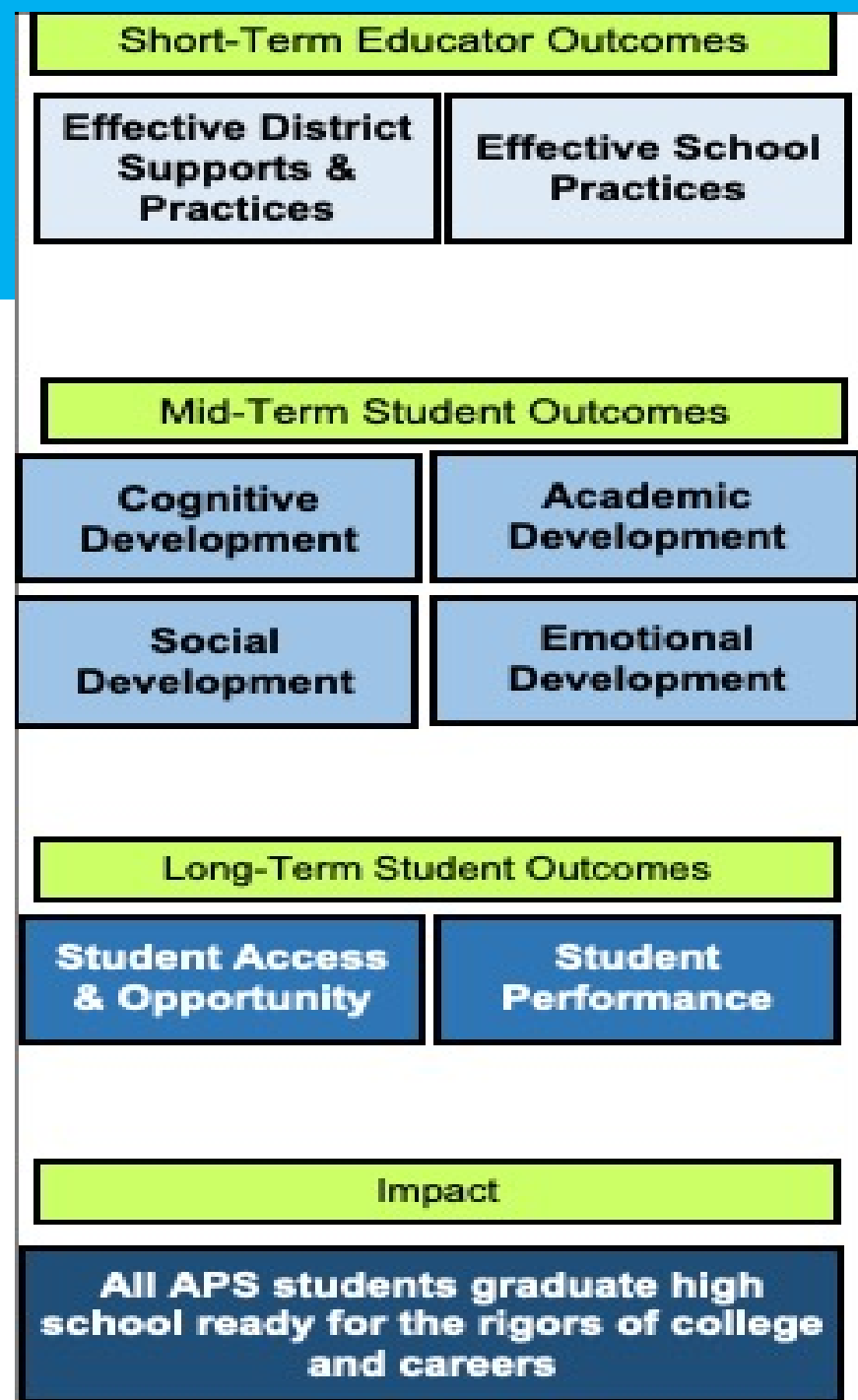
Your Responsibilities as a Department Committee Member

Get to know the teaching and learning context of your subject matter/ department focus

- How are students doing with access & opportunity?
- How are students doing with mastery of content?
- Are all students being supported in their cognitive, academic, social and emotional development?

Various school data includes:

- Virginia Department of Education: [School Quality Profiles](#).
- Arlington Partnership: [Your Voice Matters](#) survey.
- You: Coordinate with the Staff liaison to determine available data. Identify ways to collect information within the context of the current situation.



ACTL Department Committee Meetings

- **Meet once a month** (determined by the Committee)
- **Collaborate with APS staff liaison /** department supervisor
- **Collect information on teaching and learning**, effective district supports and practices, and effective school practices
- **Write progress memos** on what's working, what's not working, and recommendations



Pro-tip! You do not need to be an expert in the topic area. Just bring your enthusiasm to learn and to help APS get better at serving all our students.

Progress Memos from Each Department Committee

Each department committee will produce progress memos to describe:

- What is working.
- What is not working.
- What are some solutions or implications moving forward.

Progress memo schedule:

- December 2020
- March 2021
- June 2021

Why is ACTL Important?

Why is it important to have an Advisory Council on Teaching and Learning?

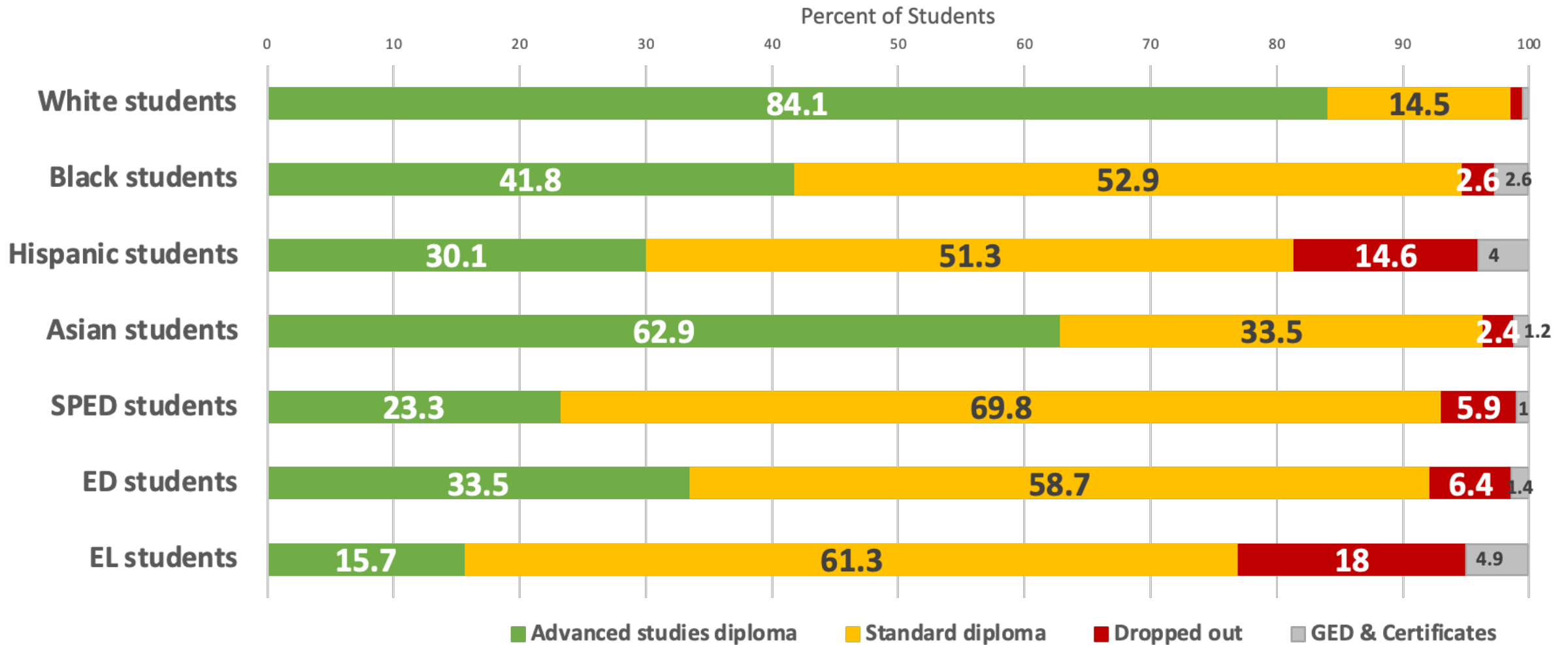
Arlington Public Schools has the highest per-pupil-expenditure in the area

TABLE 1: SCHOOL DIVISION CONTEXT AND STUDENT DEMOGRAPHIC INFORMATION

	Division context		Student demographic characteristics						
	PPE	Size	% White	% Black	% Hispanic	% Asian	% EL	% ED	% SPED
ARLINGTON	\$18,894	27,434	45.1	10.1	28.3	9.1	30.8	28.0	14.8
FALLS CHURCH	\$18,786	2,621	63.0	3.5	14.1	7.7	9.7	7.7	12.6
ALEXANDRIA	\$17,691	15,968	28.2	25.7	37.4	5.2	41.2	60.4	10.3
FAIRFAX	\$15,373	187,830	37.8	9.8	26.8	19.5	27.4	29.3	14.7

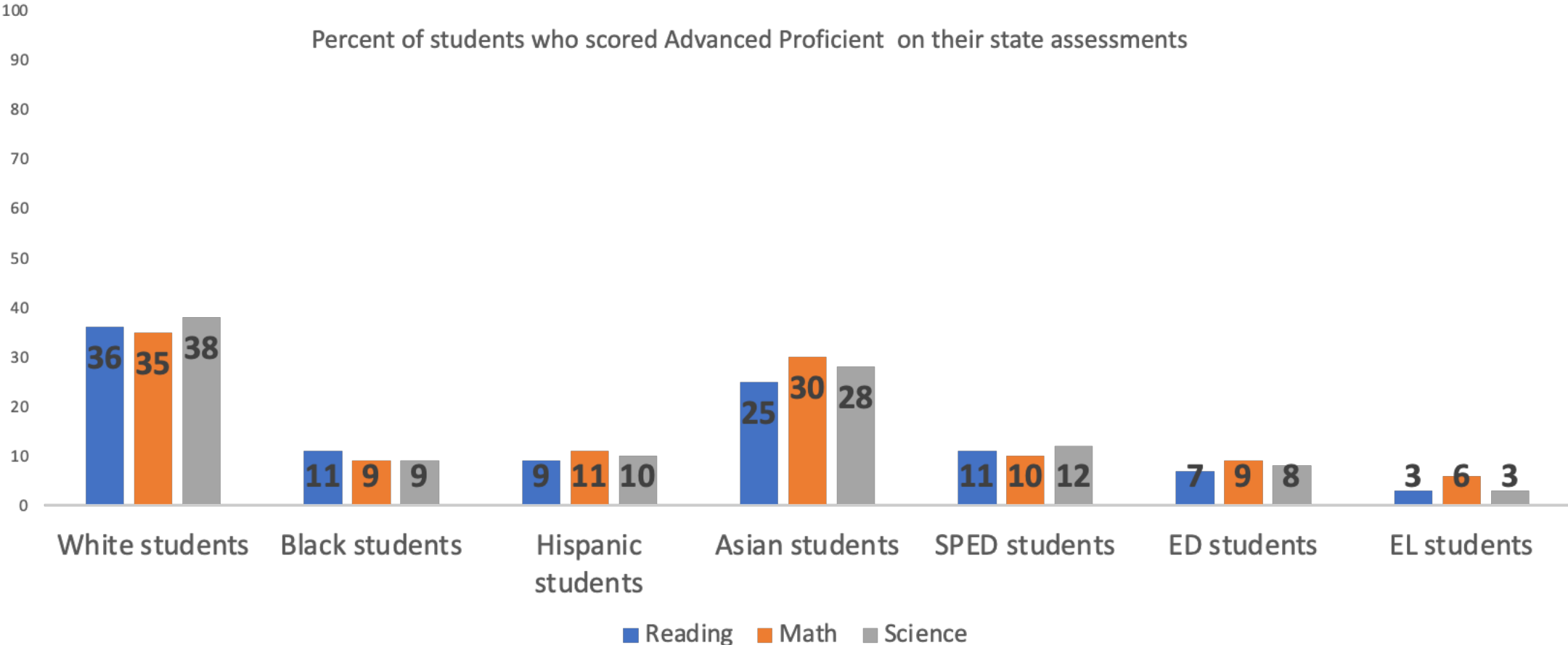
Note: VDOE School Quality Profiles, 2019. PPE = Per Pupil Expenditure. EL = English learner students. ED = Economically disadvantaged students. SPED = Students with disabilities.

Yet many students are NOT graduating APS ready for the rigors of college and careers



Note: VDOE School Quality Profiles, 2019. SPED = Students with disabilities. ED = Economically disadvantaged students. EL = English learner students.

And we must improve the mastering of content for ALL students for accessing opportunities for success



Note: VDOE School Quality Profiles, 2019. SPED = Students with disabilities. ED = Economically disadvantaged students. EL = English learner students.

Final thoughts and questions

We got this!

Thank you for your valuable input, feedback, and reporting.

For additional questions or brilliant ideas, contact us!

Rebecca Hunter, *Chair*
rhunter0811@gmail.com

