



Dorothy Hamm Middle School Community Newsletter (August 2020)

Completed and ongoing tasks:

Addition

- Partition wall installation on the 1st floor is complete with the feature wall nearly complete within the monumental stair area;
- Installation of exterior windows is complete;
- Installation of exterior copper panels is nearly complete;
- Installation of the mockup classroom space in the addition is nearly complete;
- Overhead mechanical, electrical, and plumbing work is nearly complete;
- The auxiliary gym and associated athletic equipment installation are nearly complete;
- Installation of permanent light fixtures is complete;
- Roof system installation is nearly complete;
- Science classroom build out is complete and installation of equipment ongoing;
- Floor covering installation is nearly complete;
- Installation of green roof is nearly complete;
- Interior connections between the old and new school buildings are nearly complete;
- Installation of new technology outlets, devices, and infrastructure is ongoing;
- Final painting of classrooms, corridors, and bathrooms is nearly complete;
- Build out of main school entrance vestibules is ongoing, and
- Curtain wall installation is ongoing.

Renovation

- Work on the classrooms in infilled stairwell near the addition is complete;
- Installation of brick façade on west, rear side of building, is complete;

- Work on the new counseling suite of rooms is nearly complete;
- Work on the addition of the new portals to the addition is nearly complete;
- Work on the 3rd floor teacher collaboration suite is complete;
- Work on the new public restroom is ongoing;
- Installation of the new outdoor custodial spaces is nearly complete; and
- Interior punch list work is ongoing.

Site Improvements

- Coordination for the Vacation Lane and Old Dominion off-site street work is ongoing with Dominion Energy and Arlington County with final permits approved;
- Construction of exterior building bio retention structures is ongoing with many being nearly complete except for plantings;
- Installation of trees, plants, and shrubs is on hold until the next planting season;
- Installation of dry utilities as well as sidewalk along Vacation Lane is nearly complete with the new raised crosswalks ongoing;
- Installation of site furnishings is ongoing around the addition;
- Installation of access sidewalks, stairs, and plazas is current and ongoing;
- Installation of the new front and rear plazas is ongoing;
- Installation of new below grade utility conduits is nearly complete; and
- Installation and fabrication of the historical trail memorial path is ongoing.

Construction activities planned next month:

- Addition achieving substantial completion;
- Completion of the main roof and green roof;
- Build out of new storage rooms around the cafeteria;
- Build out of final section of new roofing;
- Installation of overhead and in-wall mechanical, electrical, and plumbing;
- Completion of mock-up classroom;
- Installation of classroom flooring and casework;
- Installation of new technology wall and components throughout the school;
- Completion of auxiliary exterior access doors; and
- Completion of site concrete work.

Process related activities:

- Construction activities will continue between 7am to 5pm on weekdays for the Addition and Renovation areas. Saturday work is being performed as needed for both the Renovation and Addition scopes of work. The site work for the improvements along Vacation Lane will cause disruptions to traffic. Those disruptions/changes will be shared with the community, in more detail, closer to their anticipated occurrence.

[TO SEE 3D RENDERINGS OF THE CURRENT PROJECT CLICK HERE](#)

Progress Photos:



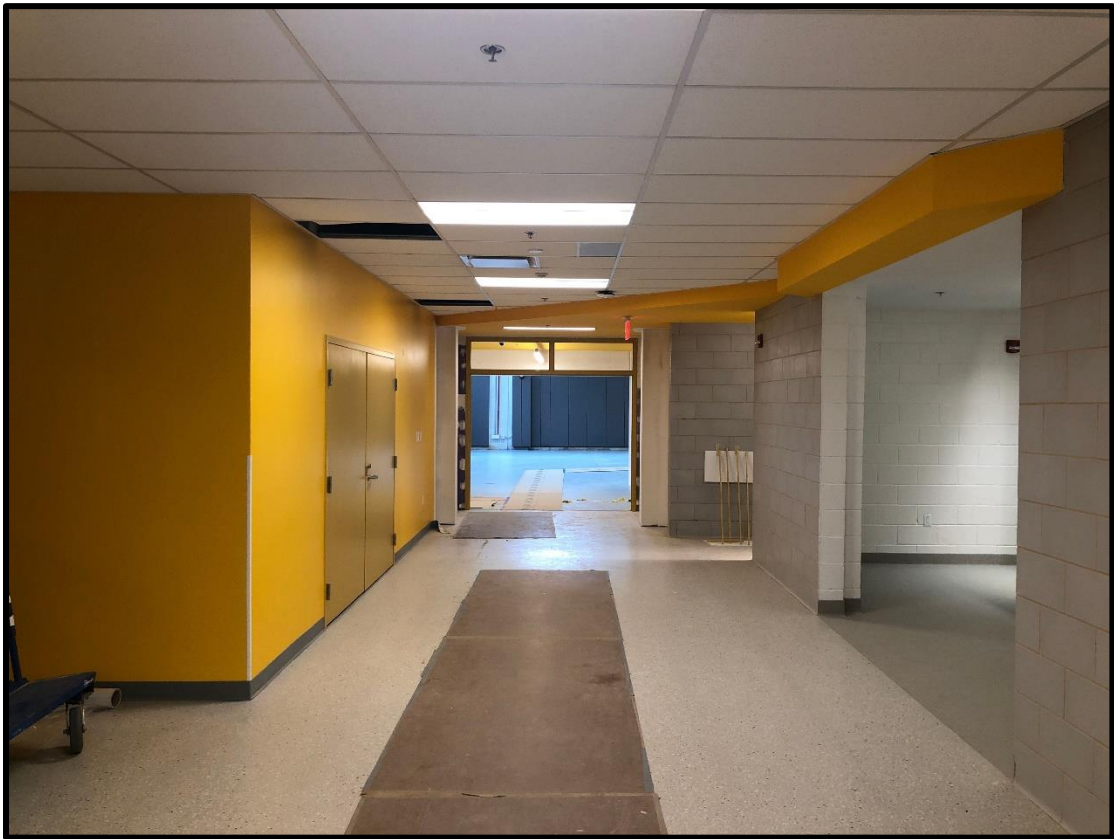
View of the front of the school addition



View of the west elevation of the addition



View of the south elevation of the addition



View of first floor main corridor



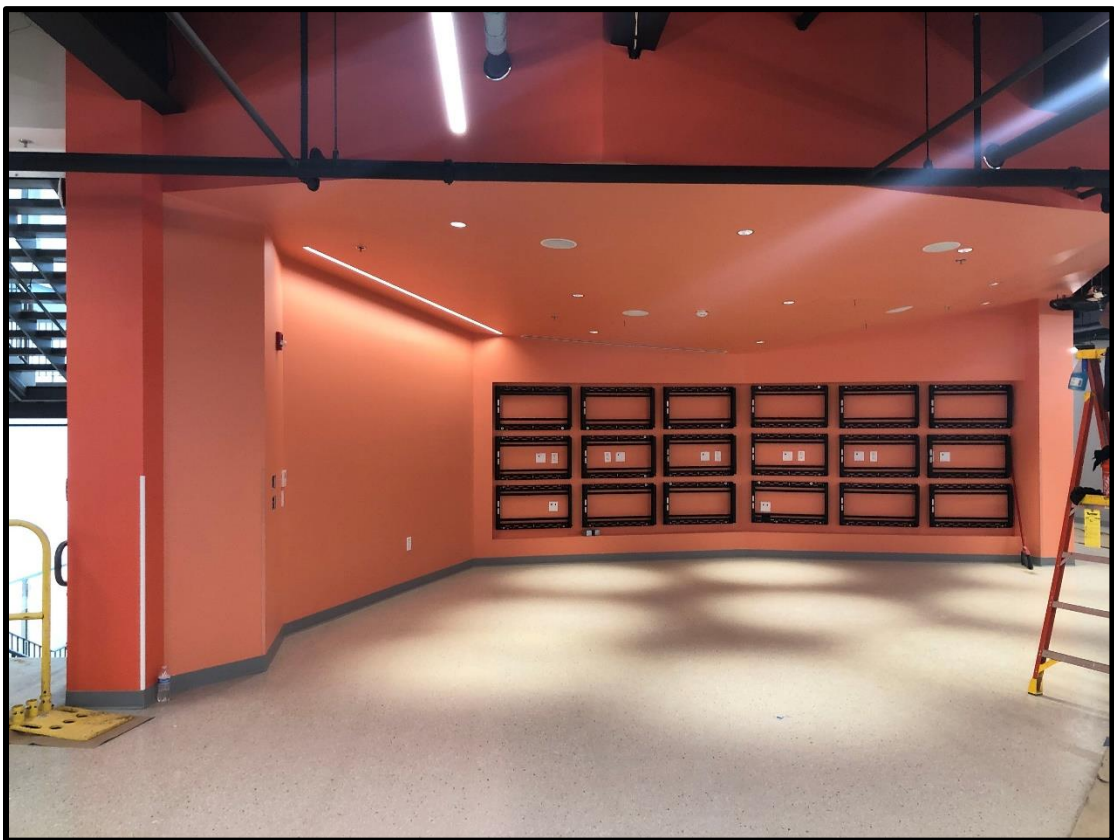
View of new auxiliary gym area



View of new health room on first floor



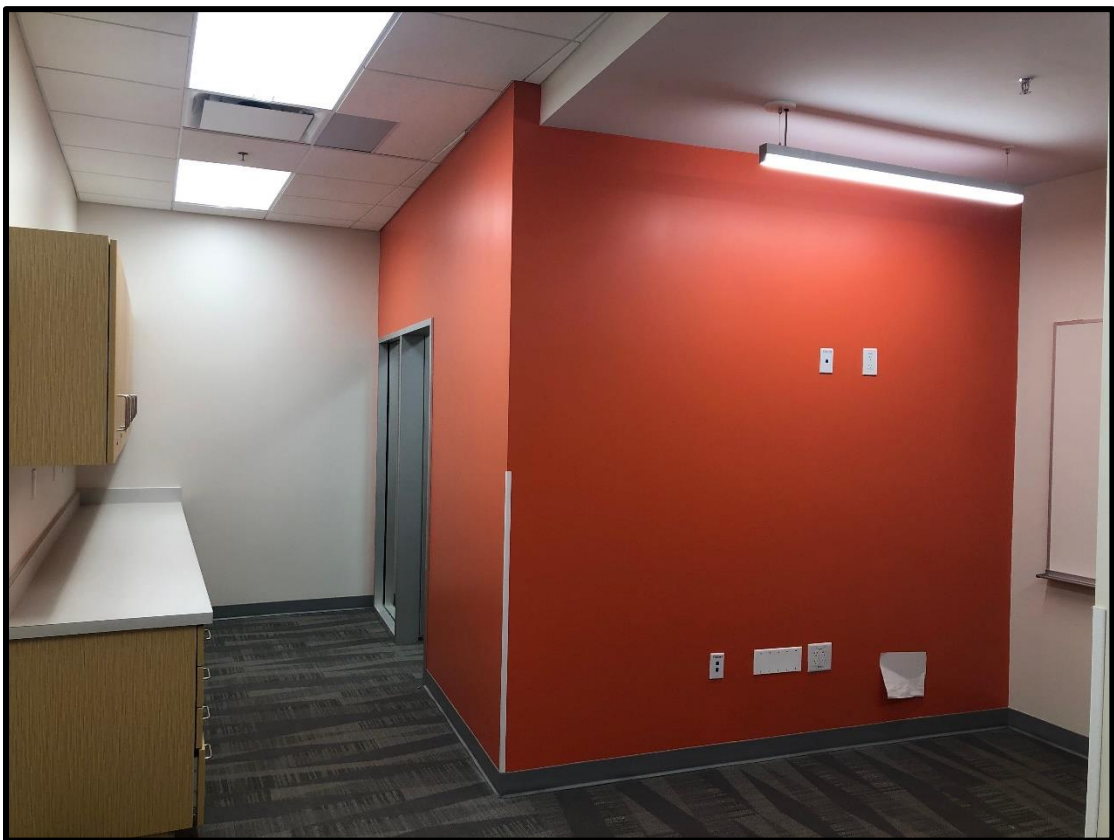
View of new library space



View of new student commons area



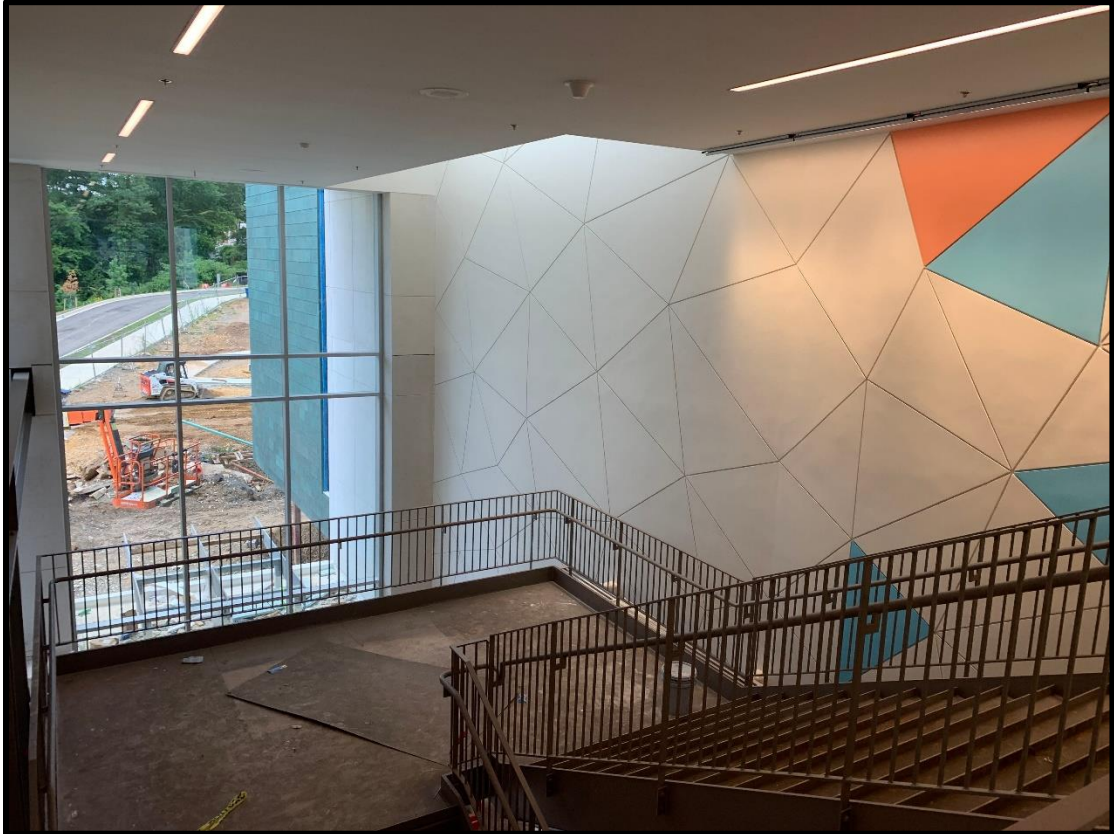
View of new connection between new and existing parts of the school



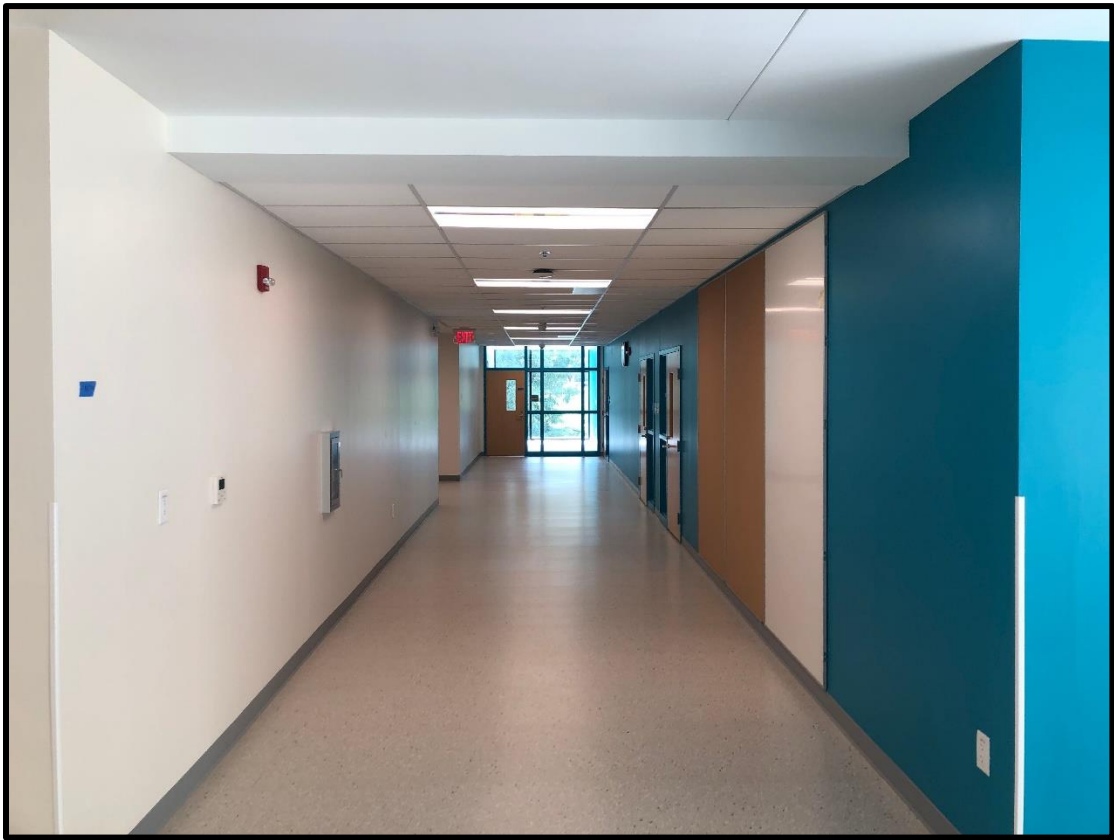
View of extended day suite



View of second floor corridor looking North



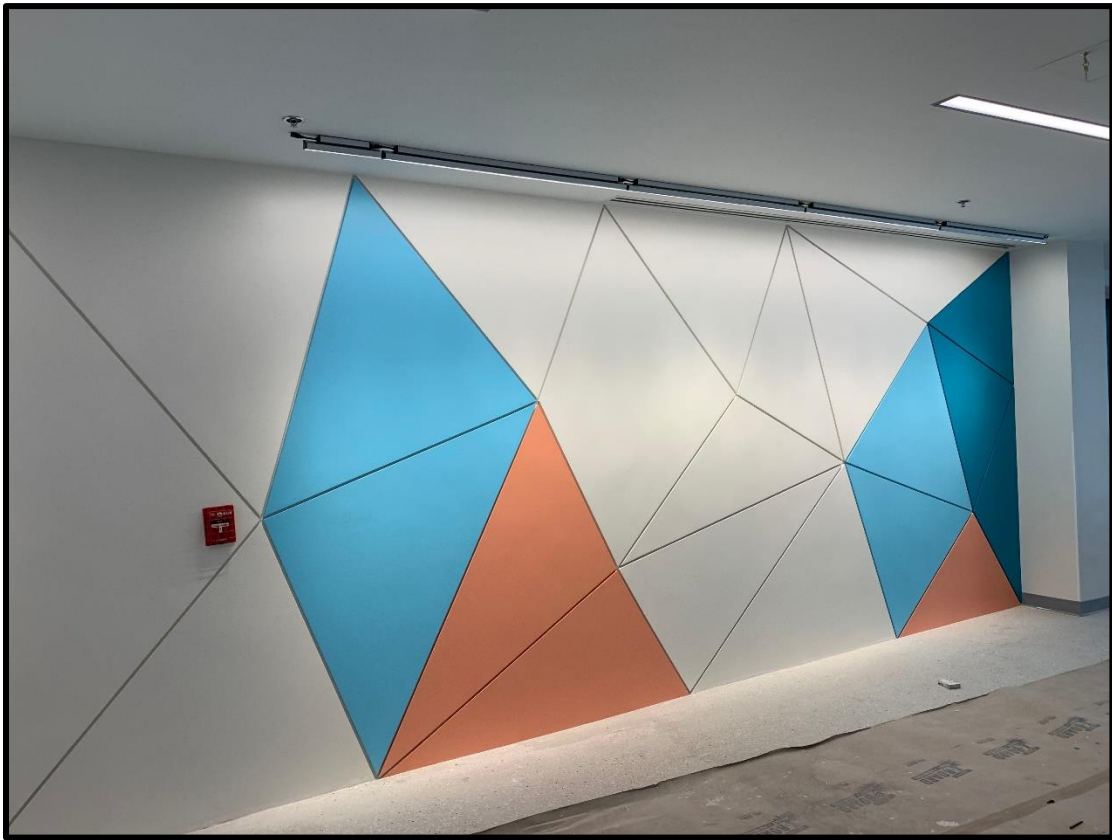
View of third floor corridor at monumental stair top



View of third floor corridor



View of mockup classroom



View of monumental staircase feature wall



Installation of new terrazzo tile in renovation



View of new roof and rainscreen installation



View of historical trail sidewalk installation