



**Arlington  
Public  
Schools**



# **Fleet Elementary School Project Quarterly Construction Meeting**

**August 14, 2019**

# Site reference



Site plan prior to construction



Site plan after construction

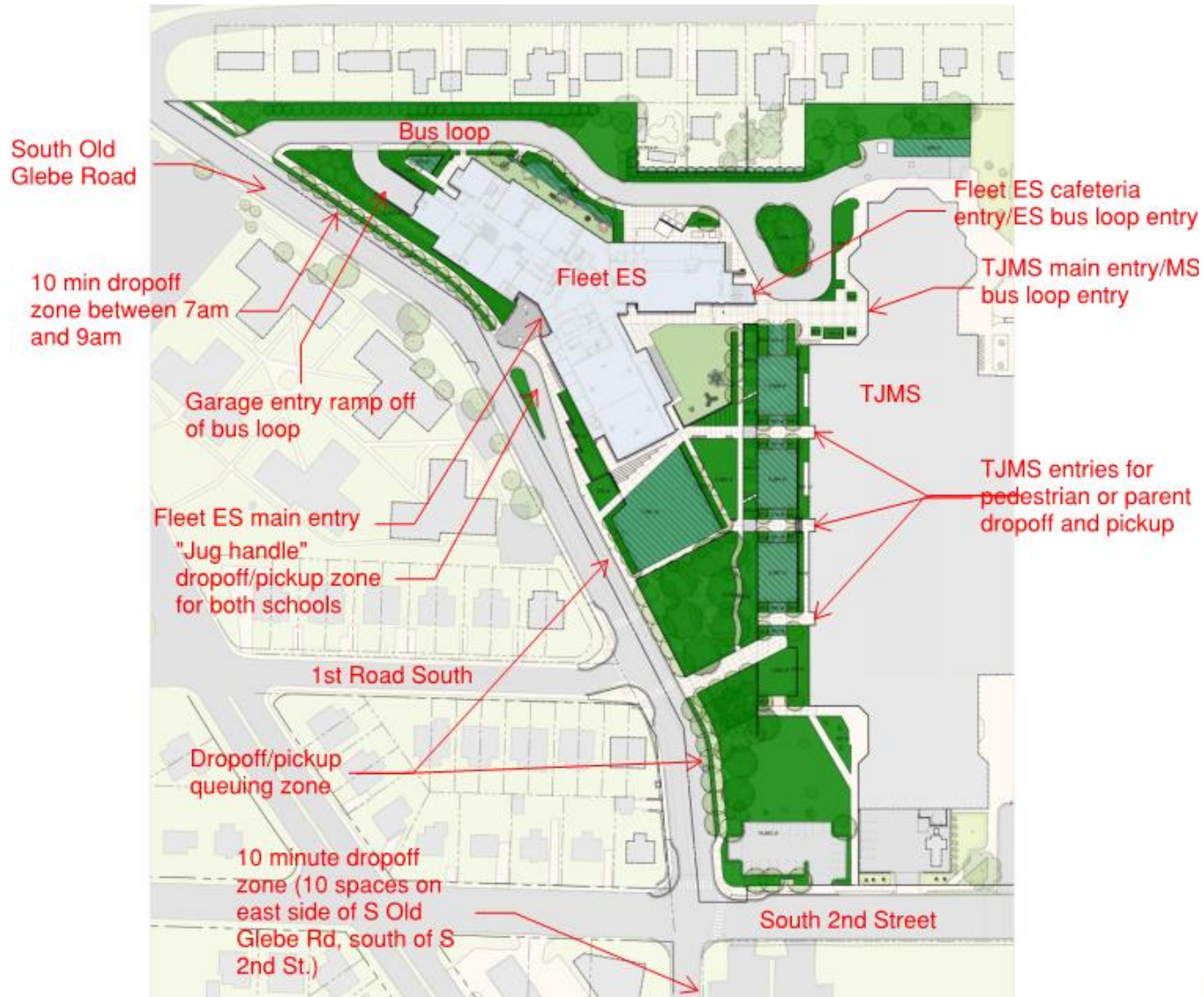
- Life safety (fire alarm and sprinkler) systems approval on July 26
- Furniture and equipment loading permit received on July 29
- Furniture deliveries commenced on July 30 and 95% of the furniture will be in place by the end of next week
- Move from PHES commenced on August 8 and will complete this week
- Final PA system testing is scheduled for Friday, August 16
- Voice & Data (phones and computers) system activation is pending activation of Connect Arlington fiber
- Occupancy permit is scheduled to be released no later than August 16
- Staff occupancy will take place on August 19
- Site work south of the building will be ongoing after August 19 and complete by September 3
- Student occupancy will take place on September 3

# Site Work between 8/19 and 9/3



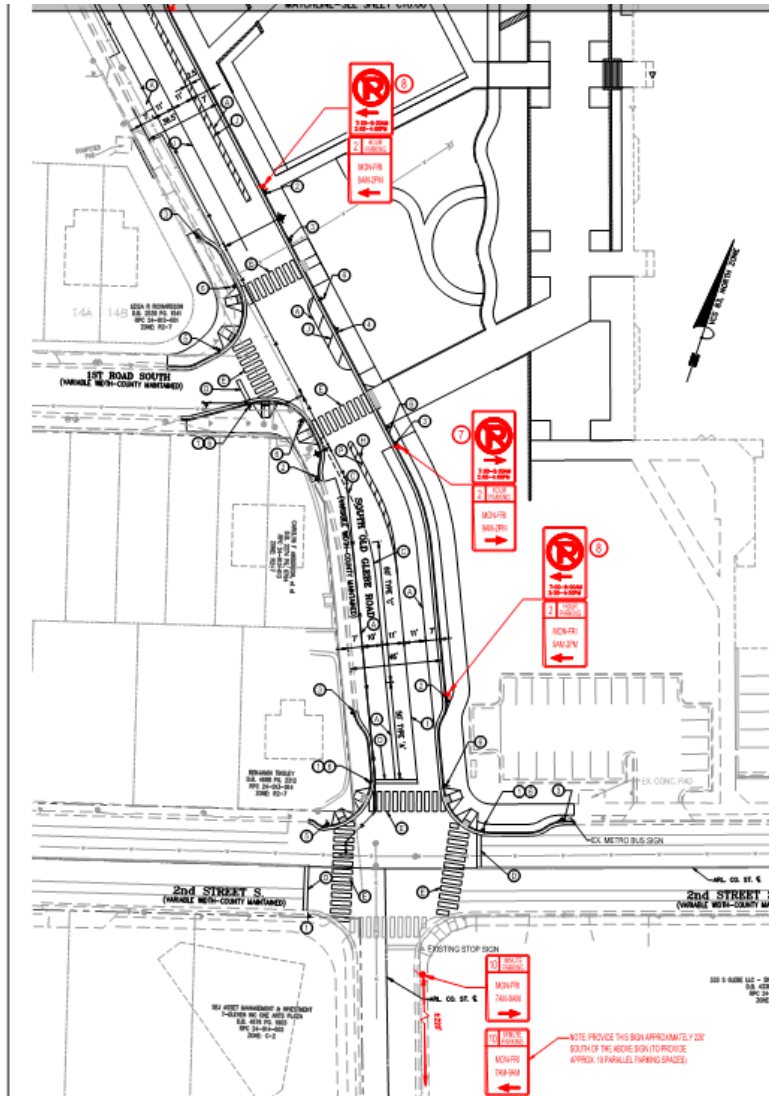
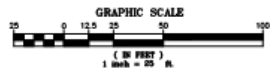
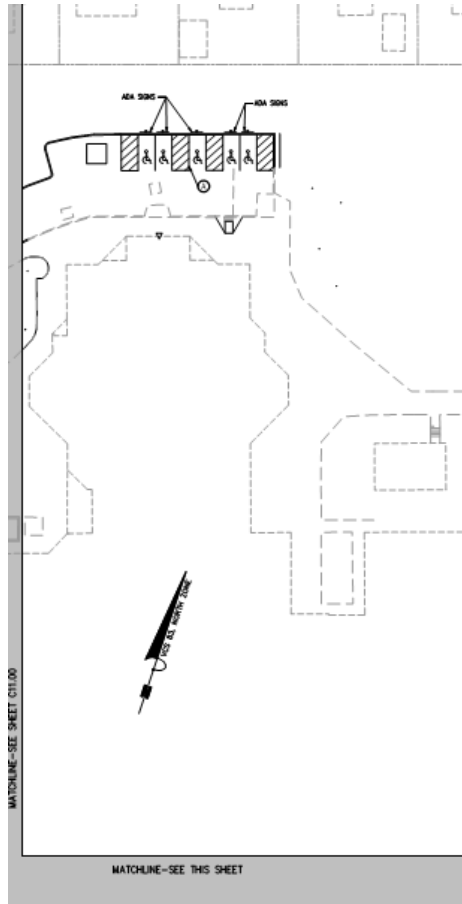


# Campus dropoff and pickup





# S Old Glebe Rd Striping and Signage



- STANDARD SIGNAGE NUMBERING:**
- ① TYPE B CLASS 1...WHITE 4" WIDTH
  - ② TYPE B CLASS 1...WHITE 4" WIDTH, 10' LONG, 30' SPACING
  - ③ TYPE B CLASS 1...WHITE 4" WIDTH, 2' LONG, 12' SPACING
  - ④ TYPE B CLASS 1...WHITE 4" WIDTH
  - ⑤ TYPE B CLASS 1...WHITE 4" WIDTH
  - ⑥ TYPE B CLASS 1...WHITE 4" WIDTH
  - ⑦ TYPE B CLASS 1...YELLOW 4" WIDTH, 10' LONG, 30' SPACING
  - ⑧ TYPE B CLASS 1...YELLOW 4" WIDTH
  - ⑨ TYPE B CLASS 1...WHITE 4" WIDTH, 10' LONG, 30' SPACING @ 45 DEGREE
  - ⑩ TYPE B CLASS 1...WHITE SINGLE APPROX
  - ⑪ TYPE B CLASS 1...WHITE COMBINATION APPROX
  - ⑫ TYPE B CLASS 1...WHITE 4" LETTERS
  - ⑬ TYPE B CLASS 1...WHITE 4" WIDTH, 2' LONG, 12' SPACING
  - ⑭ TYPE B CLASS 1...WHITE 4" WIDTH, 30' SPACING @ 45 DEGREE
  - ⑮ TYPE B CLASS 1...YELLOW 4" WIDTH, 30' SPACING @ 45 DEGREE
  - ⑯ TYPE B CLASS 1...WHITE 4" WIDTH, 2' LONG, 12' SPACING
- PAVING LINES, EDGE LINE, LANE LINES, DIVIDERS, DOTTED LANE LINES, LANE TRANSITIONS, TURN LANE SKIPS, STOP BARS, COMPARTMENT CROSSINGS, TURN LINES, TRANSVERSE CROSSINGS, ONE LINES, DIVIDED TRAFFIC, TWO WAY TURN LINES, EDGE LINES, CENTER LINES, WHITE LINES, SAFETY ZONES, TURN LINES, TURN LINES, COMPARTMENT LETTERS (STOP, YIELD, BUS, ONLY, ETC.), CORE MARKINGS, CORE MARKINGS, LANE TRANSITIONS.**

**STRIPING LEGEND**

- ⊙ EXISTING STRIPING
- ⊙ PROPOSED STRIPING

**LEGEND**

- EXISTING**
- ⊙ BUS STOP
  - ⊙ FIRE HYDRANT
  - ⊙ PARKING METEY
  - ⊙ SIGN
- PROPOSED**
- ⊙ BUS STOP
  - ⊙ FIRE HYDRANT
  - ⊙ PARKING METEY
  - ⊙ SIGN

R1-1	R7-2	R7-2	R7-2
SI-1 & W6-7p	SI-1 & W6-7p	W6-7p	W6-7p

**Bowman CONSULTING**

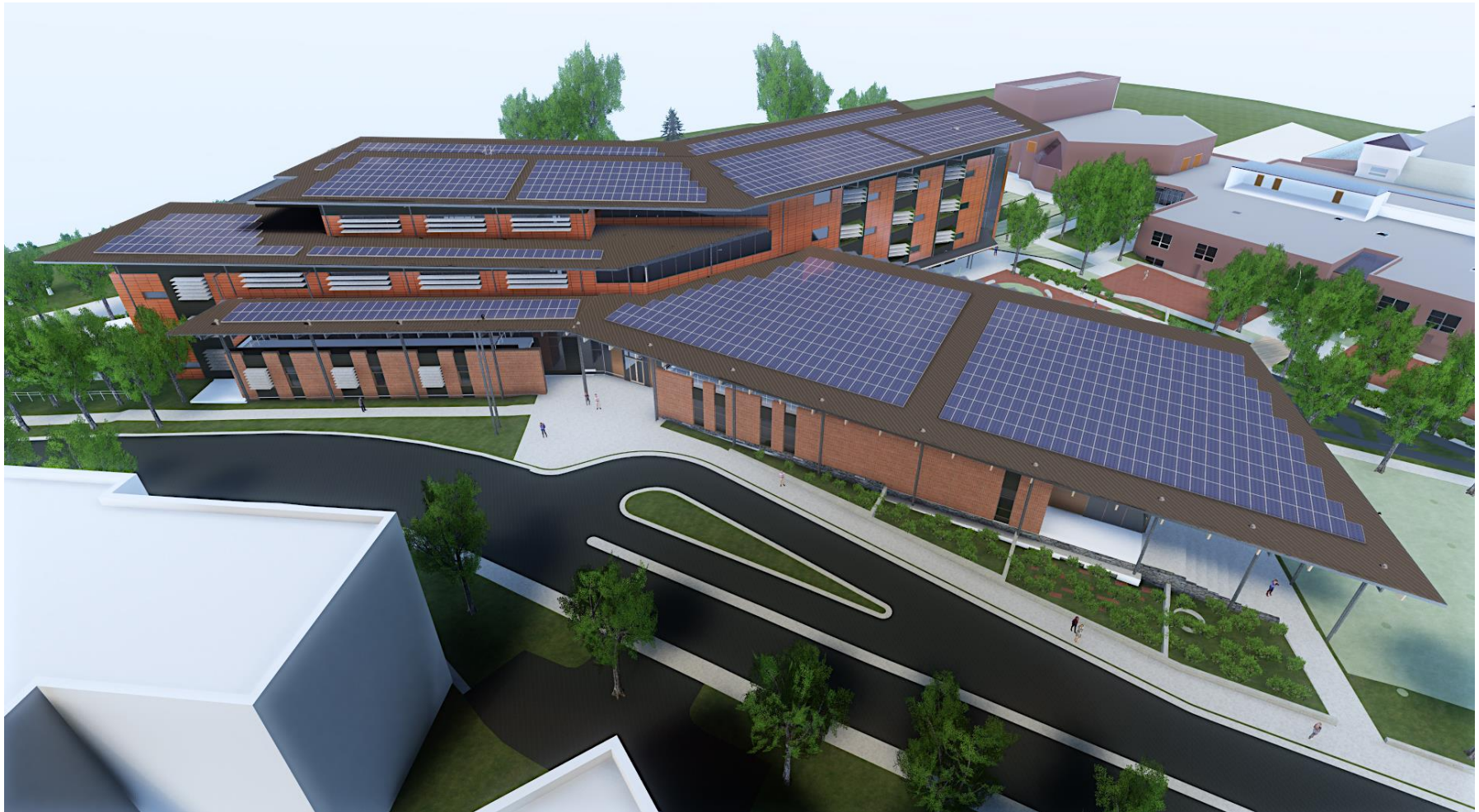
14000 Riverchase Plaza, Suite 300  
Owensboro, Virginia 22128  
Phone: 703-491-9500  
Fax: 703-491-9501  
www.bowmanconsulting.com

ARLINGTON COUNTY VIRGINIA  
DEPARTMENT OF ENVIRONMENTAL SERVICES  
SCENARIOS AND STRIPING PLAN (2 OF 2)  
NEW ELEMENTARY SCHOOL AT THE SITE OF TUBMAN/JEFFERSON MIDDLE SCHOOL  
12300 WINDYBUSH DRIVE  
LOS PITMAN #10349-111  
ARLINGTON, VIRGINIA 22204  
ARLINGTON COUNTY VIRGINIA

# Garage Operations

- APS exclusive use during the school year, M-F, 6am-4pm
- Public use during the school year, M-F, 4pm-11pm
- Public use weekend and holidays, 8am-11pm
- Garage doors will remain open M-F, 6am-11pm, and weekends 8am-11pm
- Towing for vehicles in the garage after 11pm





- Other questions or concerns?

# Community Liasons

- Kay Jackson – Construction Manager, MBP, Inc.  
email: [kjackson@mbpce.com](mailto:kjackson@mbpce.com)  
cell phone: 703.772.6576
- Will Ritmiller – Project Manager, Whiting-Turner  
email: [will.ritmiller@whiting-turner.com](mailto:will.ritmiller@whiting-turner.com)  
cell phone: 703.930.2014
- Steve Stricker – Project Manager, APS  
email: [steven.stricker@apsva.us](mailto:steven.stricker@apsva.us)  
cell phone: 571.220.0048



Arlington  
Public  
Schools



# Fleet Elementary School Project Quarterly Construction Meeting

August 14, 2019