



## Fleet Elementary School

### Community Newsletter (July 2019)

This is the July update on the status and progress of construction for the project. All monthly updates will also be posted to the project website and can be accessed via the following link:

<https://www.apsva.us/design-and-construction/new-elementary-school-jefferson-site/>

As reported in the June update, project delays to date have been addressed in a recovery schedule to ensure the project achieves the original delivery target of occupancy for the Fall 2019 school year. This recovery schedule is the basis for the new milestone completion dates. The recovery schedule incorporates re-sequencing of activities and securing of additional current and future resources in order to mitigate the delay. The project is currently on schedule in accord with the recovery schedule.

Jeffrey D. Chambers, NCARB, AIA  
Director of Design & Construction

## **Schedule Update:**

- Recovery schedule milestone dates:
  - Fire alarm and sprinkler inspections – approved
  - Elevator inspection – approved
  - Furniture & equipment move-in inspection - approved
  - Plumbing inspection – approved
  - Mechanical inspection - 8/8/19
  - Electrical inspection – 8/9/19
  - Building final inspection: 8/9/19
  - Health Department inspect kitchen: 8/13/19
  - Department of Environmental Service Site inspection - 8/13/19
  - Zoning Department occupancy inspection - 8/15/19
  - Furniture and equipment move-in – in process
  - Start of move from PHES – in process
  - Staff occupancy: 8/19/19
  - Student occupancy: 9/3/19

## **Completed and ongoing tasks:**

- Solar panel installation – complete on all roofs except low gym roof
- Permanent Glazing – substantially complete
- Exterior cladding (masonry, terracotta panels, and fiber cement siding) – substantially complete
- Mechanical, Electrical, and Plumbing (MEP) rough-ins – substantially complete
- Paint – substantially complete
- Casework – substantially complete
- Finished flooring – complete
- Bathrooms – complete
- Kitchen – preliminary Health Dept inspection took place on 8/6, final inspection scheduled for 8/13
- Elevators – both elevators are operational
- Garage – striping and signage complete, currently being used for construction worker parking
- Domestic water/fire service - complete
- Electrical service – complete
- Communications services - underground ductbanks are complete. Service installs for Connect Arlington, Comcast, and Verizon are in progress, scheduled for completion week of 8/7

- Geothermal system – complete
- Site stormwater and sanitary piping and structures – complete, except for bio-retention areas in progress. Bio-retention areas 50% complete
- Site retaining walls – complete
- Curb, gutter, and sidewalk – 70% complete
- Paving – all base course paving complete, top coat for bus loop and vehicle drop off scheduled for week of 8/12
- Landscaping – 50% complete
- Play areas – 50% complete

**Construction activities next month:**

- Completion of solar panel install
- Completion of Window/glazing installation
- Completion of exterior cladding finishes
- Completion of Mechanical, electrical, and plumbing (MEP) rough-ins
- Interior painting
- Casework installation
- Completion of kitchen inspection deficiency list
- Activate Comcast, Connect Arlington, and Comcast communication services
- Bio-retention areas
- Site sidewalks
- Paving
- Landscaping
- Play areas
- South Old Glebe Road streetscape development (curb&gutter, sidewalk, street trees, and streetlights)
- Right of way work in South Old Glebe Road

**Process related activities:**

- Construction worker parking – both levels of garage are now being used.
- Quarterly meetings – quarterly meetings to address construction issues/concerns were requested by local neighbors and Civic Associations. Final meeting will be held on 8/14/19. Meeting time is 7pm-8:30pm, meeting location is the TJMS library.



**SOLAR PANEL INSTALLATION OVER GYM STANDING SEAM METAL ROOFING**



**SOFFIT AND FASCIA INSTALLATION AT FAÇADE OVER GARAGE ENTRY RAMP**



**NORTH FAÇADE COMPLETION AND BUS LOOP COMPACTED STONE SUBGRADE**



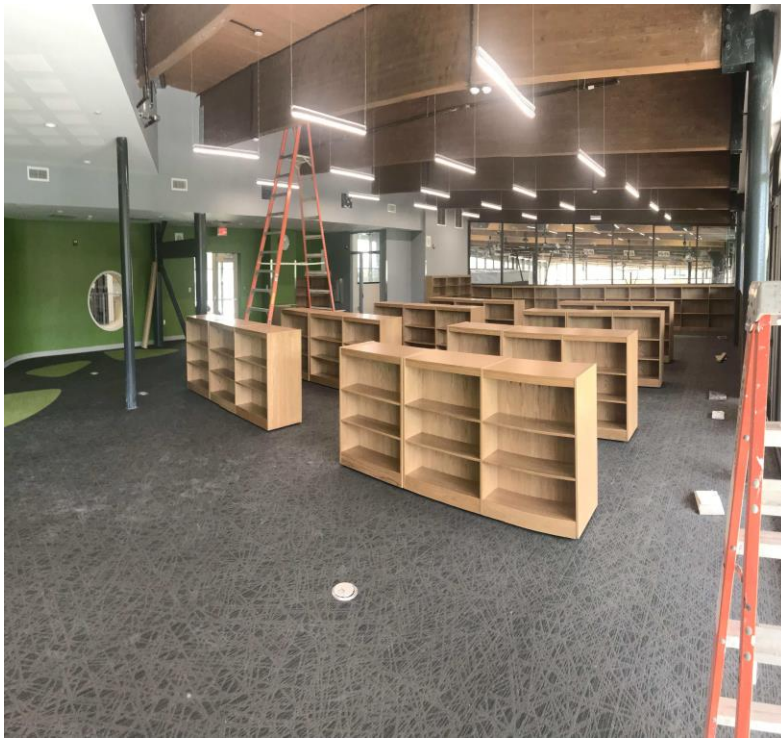
**EAST FAÇADE COMPLETION**



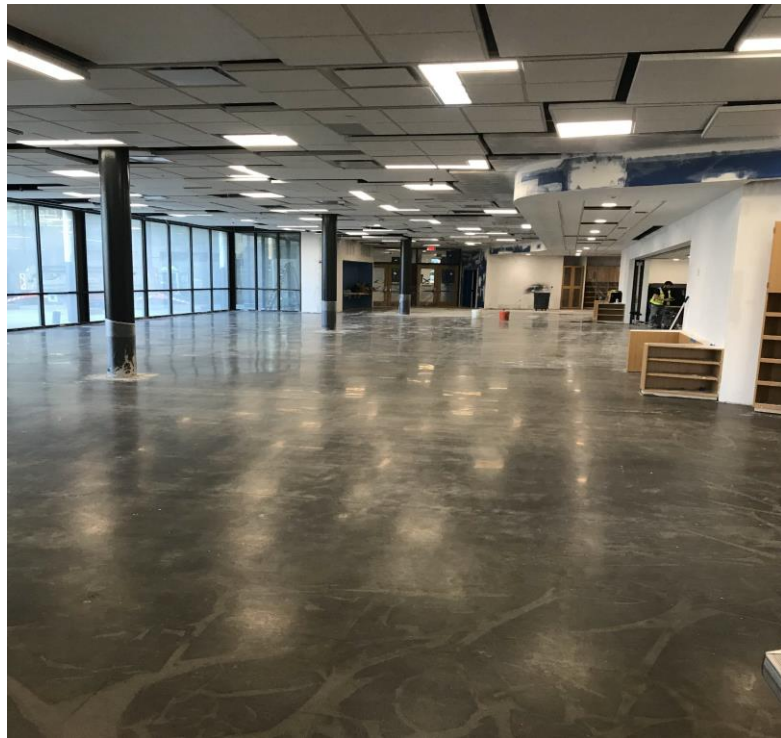
**SUNSHADES INSTALLED ON WEST FACADE**



**GYM FLOORING COMPLETE**



**LIBRARY NEARING COMPLETION**



**CAFETERIA NEARING COMPLETION**



**SECOND FLOOR HALLWAY BREAKOUT SPACES**



**THIRD FLOOR HALLWAY BREAKOUT SPACES**

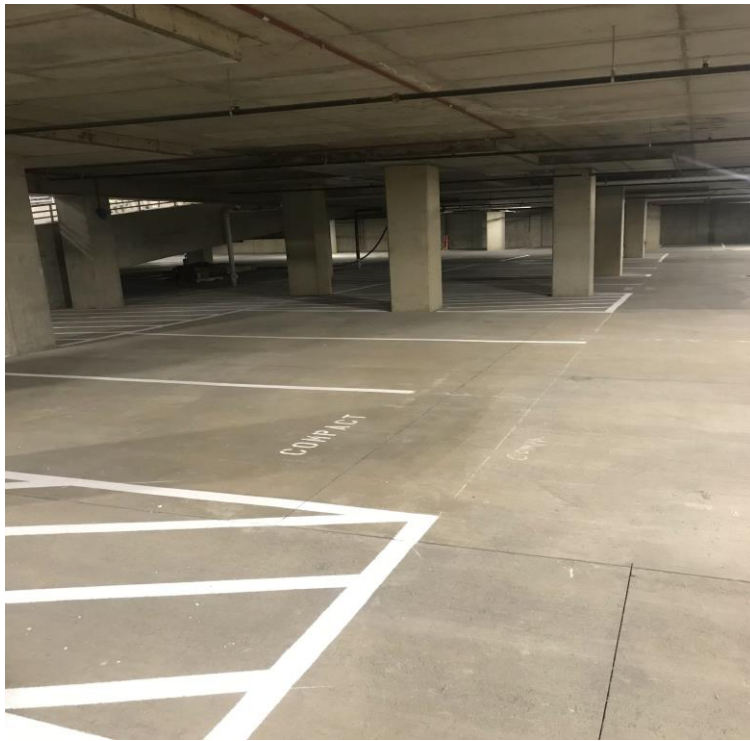




**ART ROOM EPOXY COATED FLOORING IN PLACE**



**MUSIC ROOMS COMPLETE AND CARPET PROTECTION IN PLACE**



**GARAGE STRIPING AND SIGNAGE COMPLETE**



**NEW CURB AND GUTTER FOR DROPOFF/PICKUP LOOP OFF OF S OLD GLEBE RD**



**BIO-RETENTION AREA IN PROGRESS AT BUS LOOP ENTRY**



**NEW STREETScape ALONG S OLD GLEBE RD**



**INSTALLATION OF BUS LOOP PEDESTRIAN SIDEWALK**



**LANDSCAPING AND RETAINING WALL ALONG NORTH PROPERTY LINE**



**BUS LOOP BIO-RETENTION AREA EXCAVATION**



**CONSTRUCTION OF GRADE 1 – 5 PLAY AREAS**



### **CONSTRUCTION OF PRE-K/K PLAY AREA**

Please contact me with any questions you may have regarding this update.

Steve Stricker  
Senior Project Manager  
Arlington Public Schools  
Design & Construction Services  
O 703-228-7749  
C 571-220-0048  
[steven.stricker@apsva.us](mailto:steven.stricker@apsva.us)