



No adjustments have been made to the schedule this month. School staff toured the site and with the architects sharing treats to the construction workers. Steel has topped out and you will see photos in the newsletter of installed steel trusses and metal decking. On level B2 mechanical and plumbing system installation has been completed. The window wall installation as well as exterior sheathing and framing work continued.

Jeffrey D. Chambers, NCARB, AIA Director of Design & Construction

Schedule Milestone Dates:

- Topping out of Structural Steel: 11/2/18 - finished
- Envelope complete: 4/5/19
- Utilities services: 5/3/19
- Wall close-in Inspections: 3/1/19
- Ceiling close-in inspections: 5/31/19
- Occupancy inspection: 8/1/19
- Staff occupancy: 8/19/19
- Student occupancy: 9/3/19

Completed and ongoing tasks:

- Structural steel trusses and metal decking 90% completed.
- B2 level mechanical duct and plumbing piping installation ongoing.
- Spray fireproofing work ongoing.
- Ductwork and plumbing installation at the L1,L2 and L3 level ongoing.
- Sprinkler installation at the G1 level ongoing.

- Stair #1 installation finished.
- Interior metal stud framing ongoing.
- Façade wall framing ongoing.
- Curtainwall installation ongoing.
- Pile installation complete and excavation for the DVP vault ongoing.
- Roofing at the terrace levels ongoing.
- Cistern (water storage tank) work in progress

Construction activities next month:

- Interior Framing will continue.
- Spray on fireproofing will continue.
- Façade wall framing will continue.
- Curtain wall installation will continue.
- MEP rough-in (ductwork, electrical, plumbing and sprinkler) will continue.
- Exterior work for the Stratford entrance will begin
- Mat foundation and walls for the DVP vault will be poured.
- Stair E erection will begin

Process related activities:

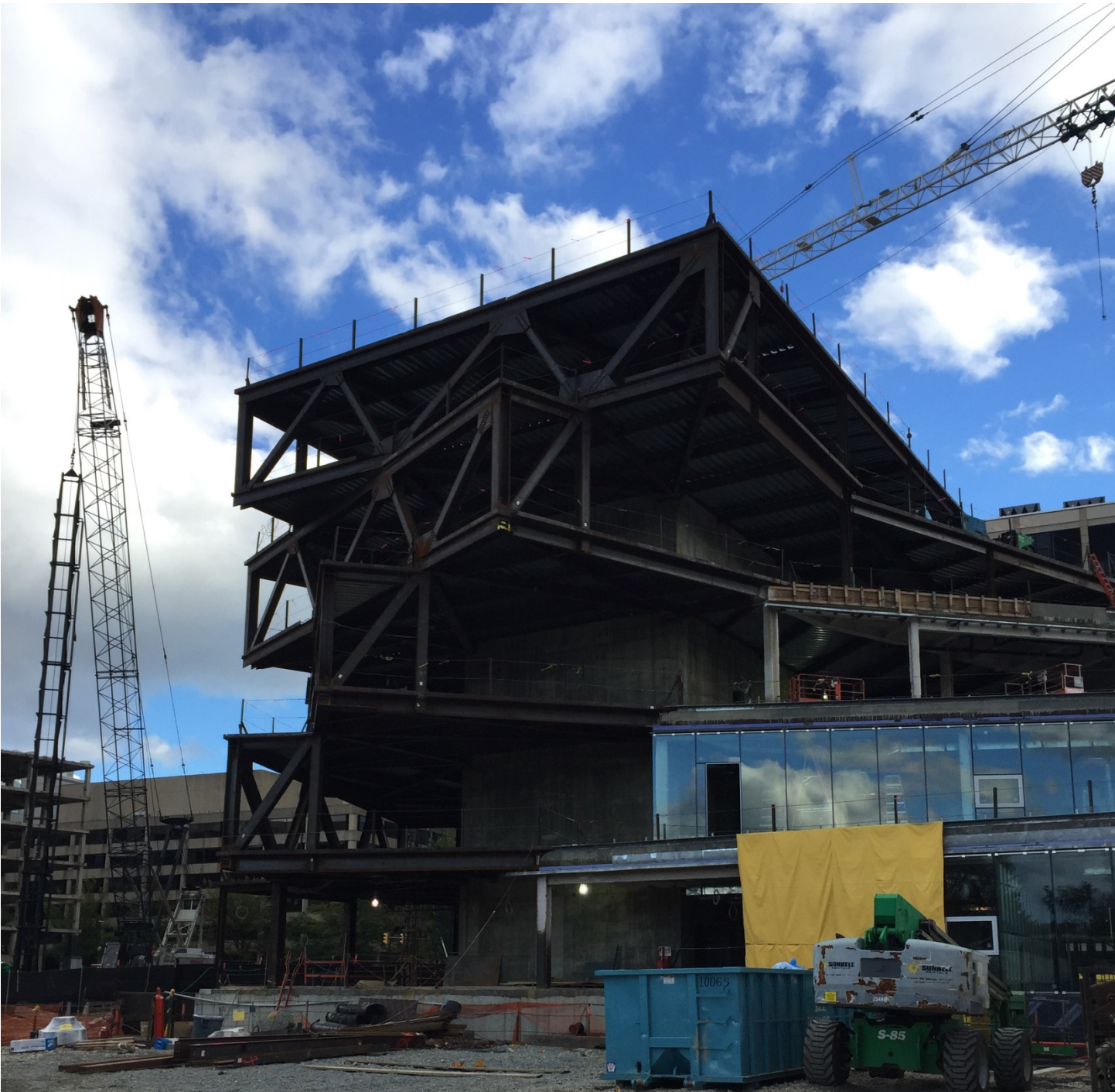
- Stormwater work along N. Quinn Street will start soon. It has been coordinated with Arlington Partnership for Affordable Housing (APAH) project.



Curtain wall installation and exterior sheathing



School staff visit site



Structural steel trusses and metal decking completed



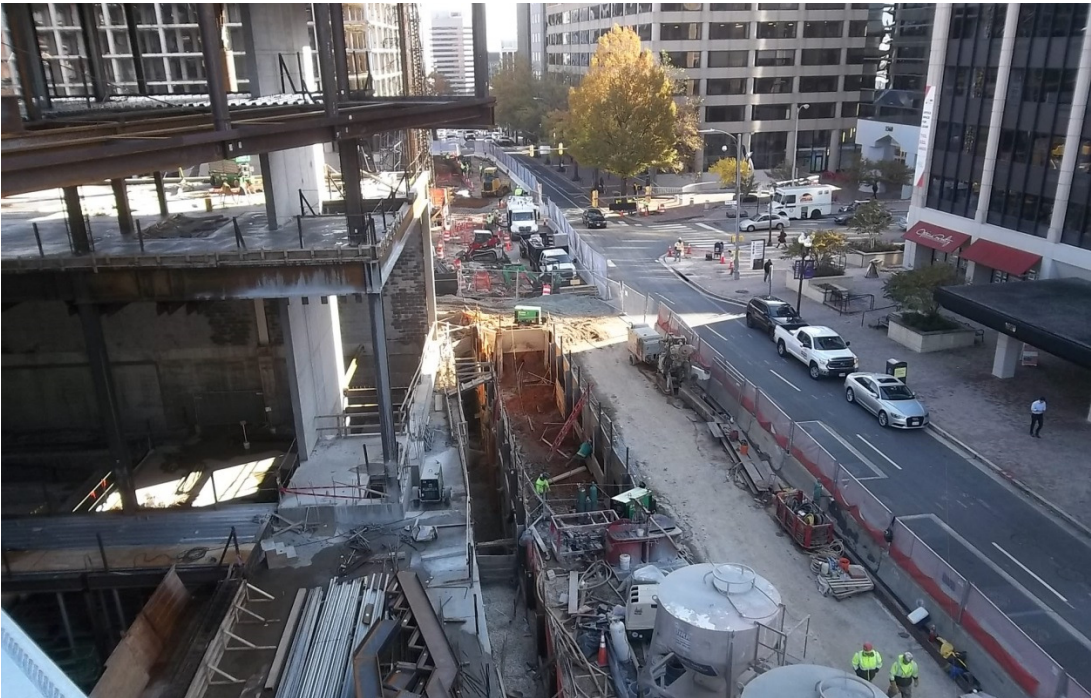
Main lobby and triangular stair



Level 5 decking



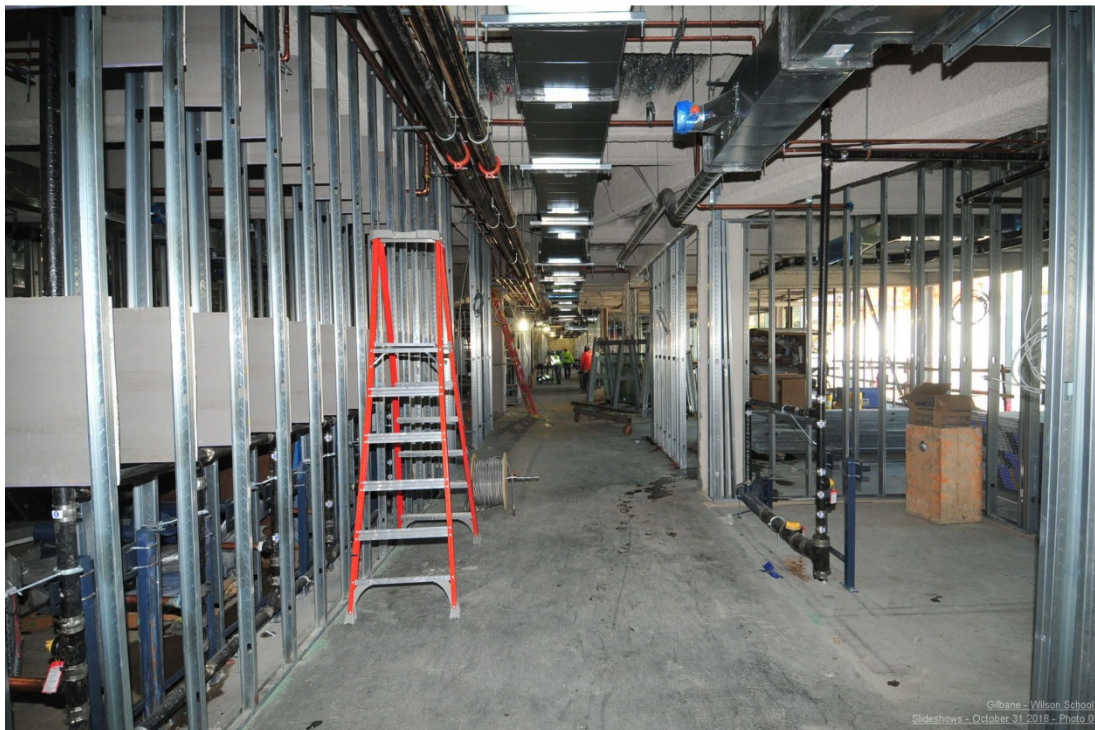
Two story musical rooms (view from L4 down)



Excavation for DVP vault



Plumbing pipe work at L1 level



Mechanical duct at L1 level



Roofing at Bar 1 & Bar 2 Terraces



Roof installation at Bar 3 Terrace



Wall forms for the cistern



Pouring concrete deck at the roof level