



Arlington
Public
Schools

Secondary School @Wilson Community Newsletter (August 2018)

Completed and ongoing tasks:

- Completed steel trusses erection for theater.
- Bars 1 and 2 roof terrace slabs were poured.
- Bar 2 library slab was poured.
- Spray fireproofing work ongoing.
- Ductwork and plumbing installation at the G1 level ongoing.
- CMU wall installation has completed at mechanical room.
- CMU wall installation at black box and gym ongoing.
- Stair #1 installation ongoing.
- Metal stud framing has begun at G1 level.

Construction activities next month:

- Façade wall framing will begin.
- Curtainwall installation will begin.
- Door Frames and Interior Framing will begin.
- MEP rough-in (ductwork, electrical, plumbing) will continue.

Process related activities:

- Washington gas will continue replacement of the gas main along Wilson Blvd. from N. Pierce St. to N. Quinn St. which will allow Gilbane to construct the DVP electrical vault on Wilson Blvd.



Exterior view from Wilson Blvd



View to axillary gym from
N. Quinn St



Steel trusses at theater erected



Bar 3 steel deck preparation



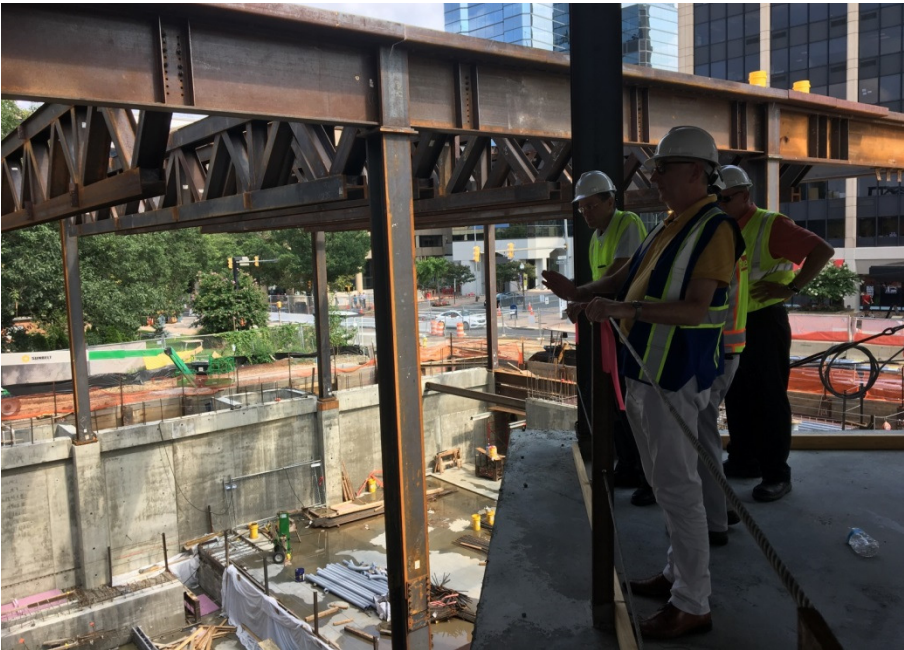
CMU walls at black box



Interior wall framing at G1



School staff visited construction site



Superintendent Dr. Murphy and Assistant Superintendent of Facilities & Operations Mr. Chadwick visited construction site