

Arlington
Public
Schools

Secondary School @Wilson

Community Newsletter (July 2018)

Completed and ongoing tasks:

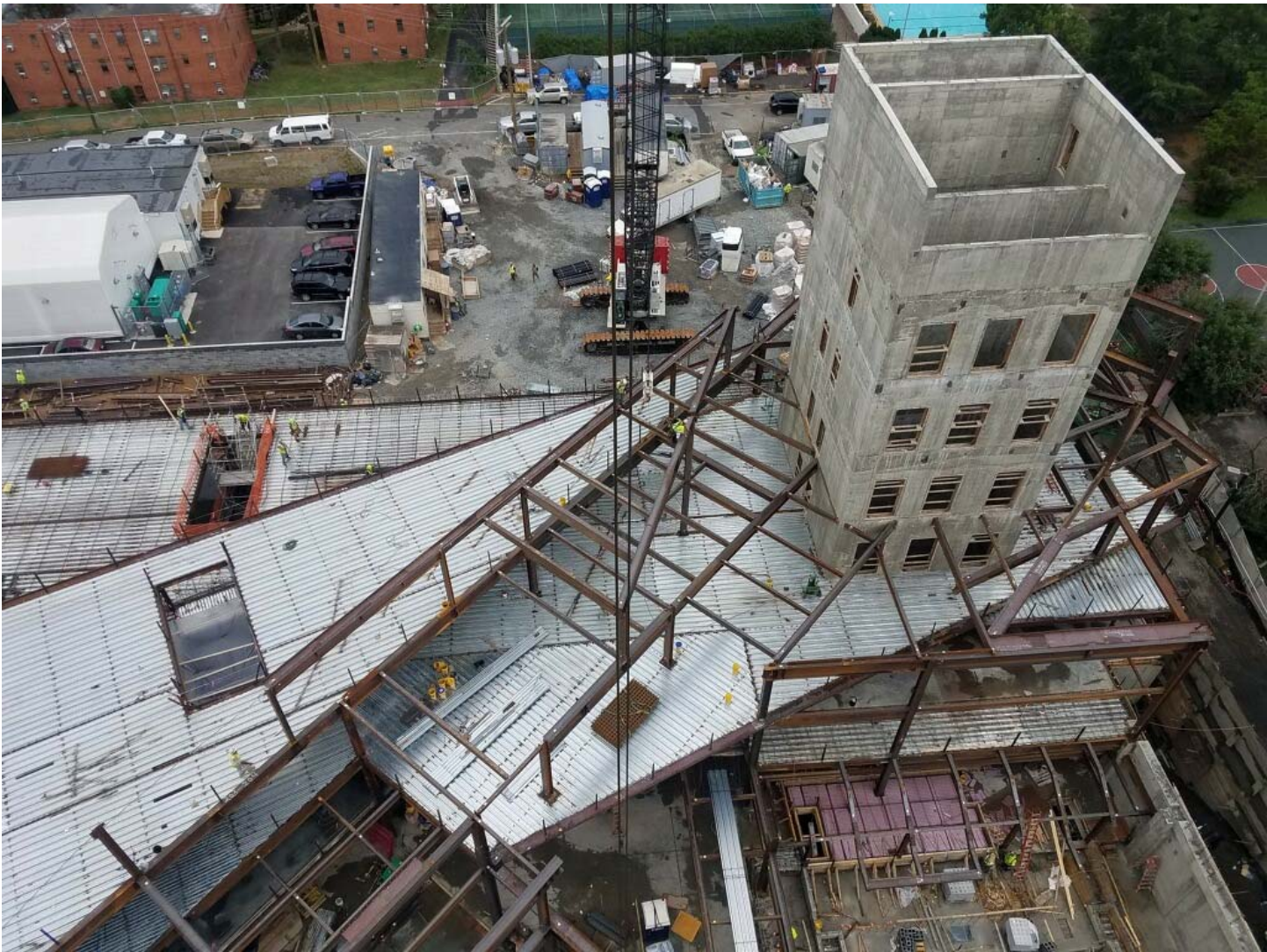
- Completed steel erection and metal decking for Bar 2.
- Courtyard foundation walls completed.
- Bars 3 and 4 steel erection, detailing and metal decking in progress.
- Perimeter wall waterproofing and backfilling ongoing.
- Spray fireproofing work ongoing.
- Ductwork installation at the B2 level is nearly complete.
- Storm and sanitary piping has begun at G1 level.
- Plumbing installation at the B2 level is nearly complete.
- CMU wall installation has begun at B2 level.
- Stair #1 installation has begun.
- Metal stud framing has begun at G1 level.

Construction activities next month:

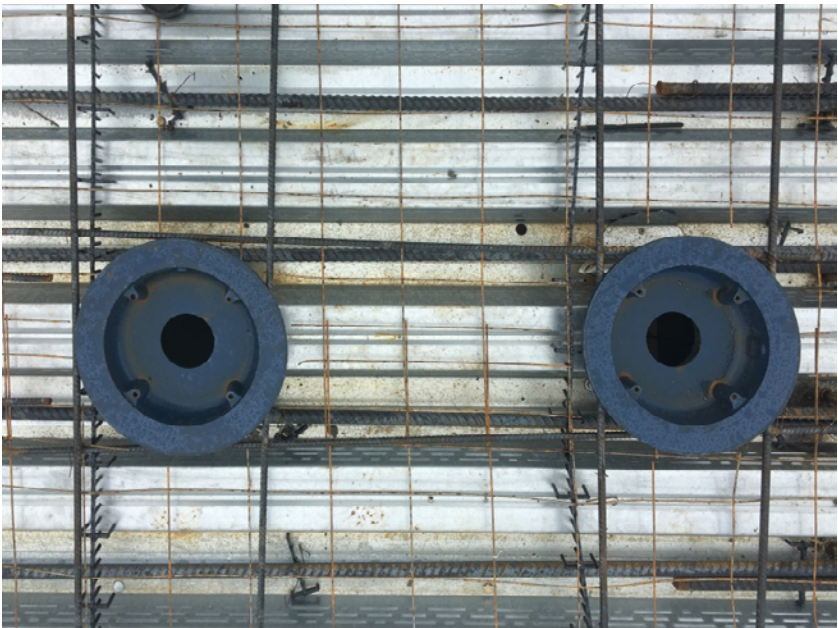
- Façade wall framing will begin.
- Curtainwall installation will begin.
- MEP rough-in (ductwork, electrical, plumbing) will continue.

Process related activities:

- Washington gas will continue replacement of the gas main along Wilson Blvd. from N. Pierce St. to N. Quinn St. which will allow Gilbane to construct the DVP electrical vault on Wilson Blvd.



Construction site overview



Roof drains at Terrace 2



Erection of level 3 cantilevered truss



Erection of level 3 steel



Stair #1 installed next to elevator shaft



Concrete rebar and window washing davit bases



Preparation before concrete pour on Level 2



Courtyard #1



Steel framing at auditorium balcony



Plumbing rough-in at level G1 ceiling