



New Middle School @Stratford Site

Community Newsletter (July 2018)

Completed and ongoing tasks:

- Occupation of APS temporary trailer for use by Turner Construction for project duration completed.
- Installation of the new 42" reinforced concrete storm piping and removal of the existing 42" reinforced concrete piping completed.
- Disconnection / removal of the existing exterior light poles and heads within the new drop off lane completed
- Mobilization for demolition associated with the new elevator proposed within Wing A of the existing school completed.
- Demolition of elevator door openings in Rooms 105, 204 and 303 completed.
- Cut, cap and safe off electrical, mechanical, and fire sprinkler systems within the limits of the proposed elevator for Wing B of the existing school completed.
- Maintaining erosion and sediment measures ongoing.
- Installation of new gas and water lines through existing building to facilitate addition ongoing.
- Installation of new sanitary sewer line and associated manholes ongoing.
- Cut, cap and safe off electrical work within the construction limits of Wing C for the new exterior finishes ongoing.
- Installation of fill material for new Drop-Off Lane ongoing
- Demolition of 1st floor slab for elevator pit ongoing.
- Partial demolition of corner 3rd and 2nd floor classrooms to facilitate new exterior finishes ongoing

Construction activities planned next month:

- Completion of new Employee Parking Lot
- Installation of retaining walls and storm water management facility installation for construction of new Employee Parking lot along Vacation Lane.
- Rough grading, clear & grubbing, and storm / sewer piping installation for new Drop-Off roadway to Old Dominion Drive within construction fencing.
- Installation of remaining storm drainage, sanitary sewer piping, and underground electrical work along Vacation Lane when school dismisses in June.
- Installation of sanitary and storm piping systems within the addition building pad area.

Process related activities:

- Construction activities will continue between 7am to 5pm on week days, and some occasional weekends to make up for lost rain days.



Partial demolition of classroom for new exterior finishes



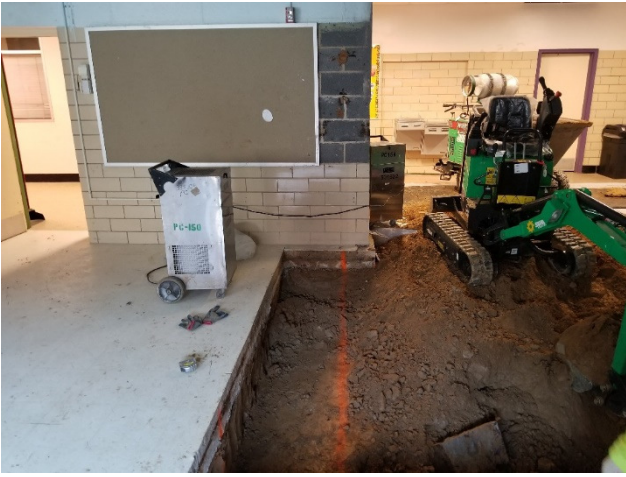
Sanitary sewer



Door opening for new Elevator



Rough grading for new Employee Parking lot



Pit for new elevator



Rough grading for new Drop-Off Lane