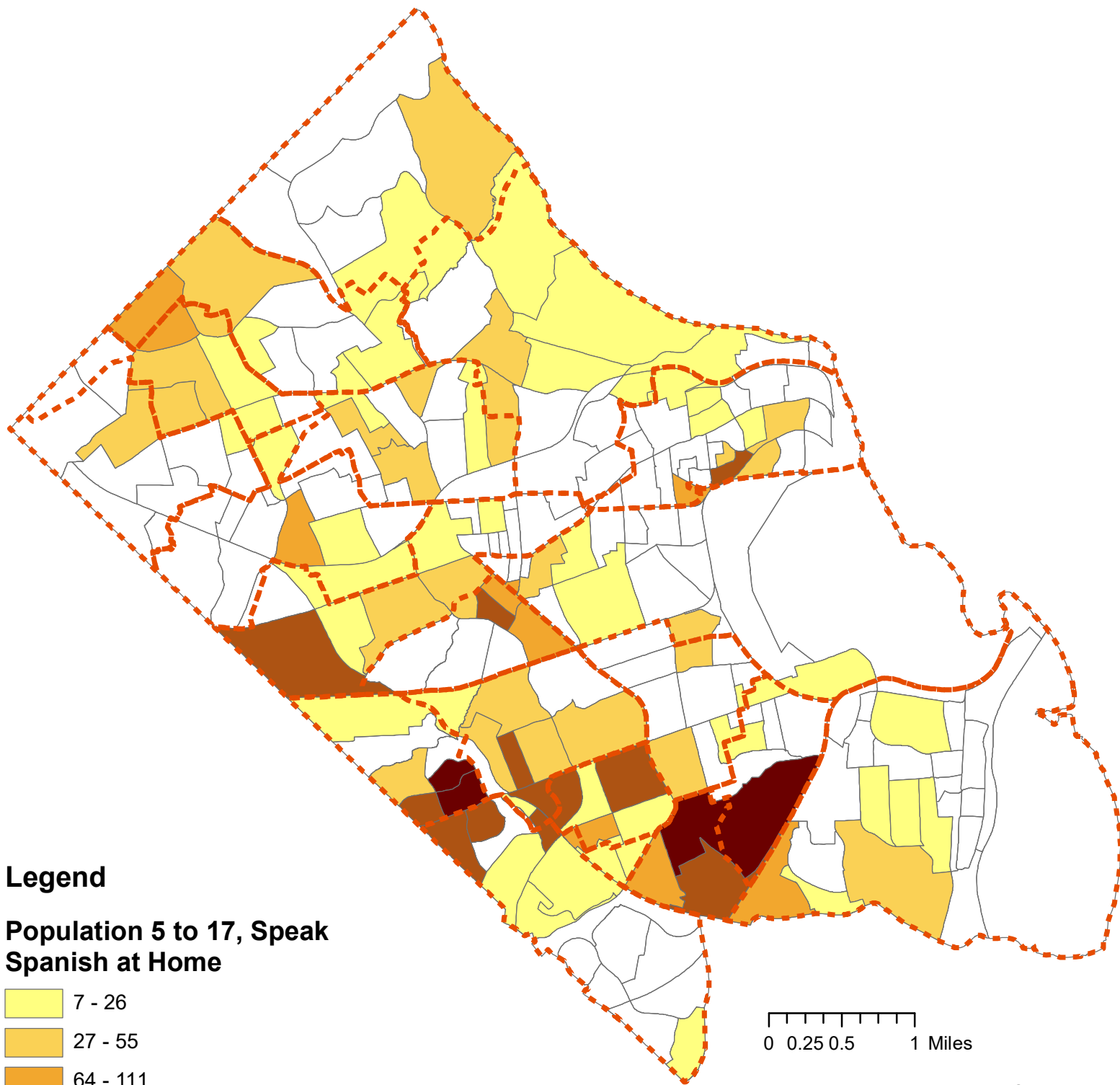


Population Ages 5 to 17, Speak Spanish at Home (2016)



Legend

Population 5 to 17, Speak Spanish at Home

- 7 - 26
- 27 - 55
- 64 - 111
- 121 - 200
- 251 - 298

Elementary School Attendance Boundary (2016)

0 0.25 0.5 1 Miles

Mapped by: Arlington Public Schools, Planning and Evaluation Department, February 2018.

Source: U.S. Census Bureau, 2012-2016 American Community Survey 5-Year Estimates, Table B16004.



NOT TO SCALE