

South Carlin Springs Road Safety Study

May 2018

Update to APS & ACTC

Completed

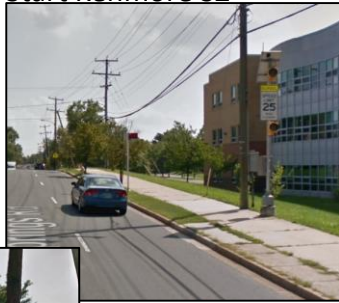
- Completed Communications Plan
- Added “No Left Turn Lane” Sign at Campbell ES Driveway
- Relocated trash bin at bus shelter north of 6th Rd S
- Recommended solution for frequent crossings at 1st St S
 - Low, continuous shrubbery between sidewalk and street outside Kenmore MS

In Progress

- Markings and bollards at intersections along the corridor
- Transit confirmed elimination of ART/WMATA stop across from Campbell ES and relocation of 3rd St S to far side of intersection
- Easements on 6th Rd S confirmed for signal improvements
- Requested signage changes to accommodate elongated school speed zone

SOUTHBOUND

Start Kenmore SZ



Kenmore SZ Sign



End Kenmore SZ

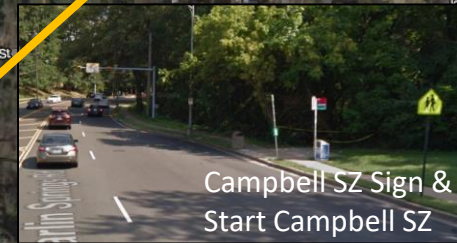
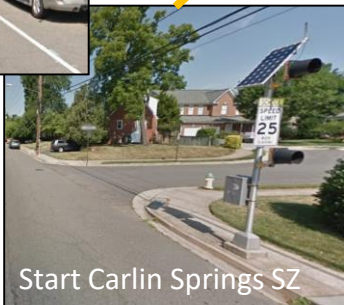


End Carlin Springs SZ



EASTBOUND

Start Carlin Springs SZ



Campbell SZ Sign & Start Campbell SZ



End Campbell SZ

EXISTING CONDITIONS



Start Kenmore SZ



NORTHBOUND

End Campbell SZ



Start Campbell SZ

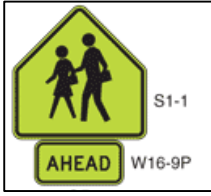


Campbell SZ Sign



SOUTHBOUND

Install S1-1 & W16-9P (SB)



Remove S5-2 (SB)



Add S1-1 in front of Carlin Springs ES in each Direction (NB & SB)

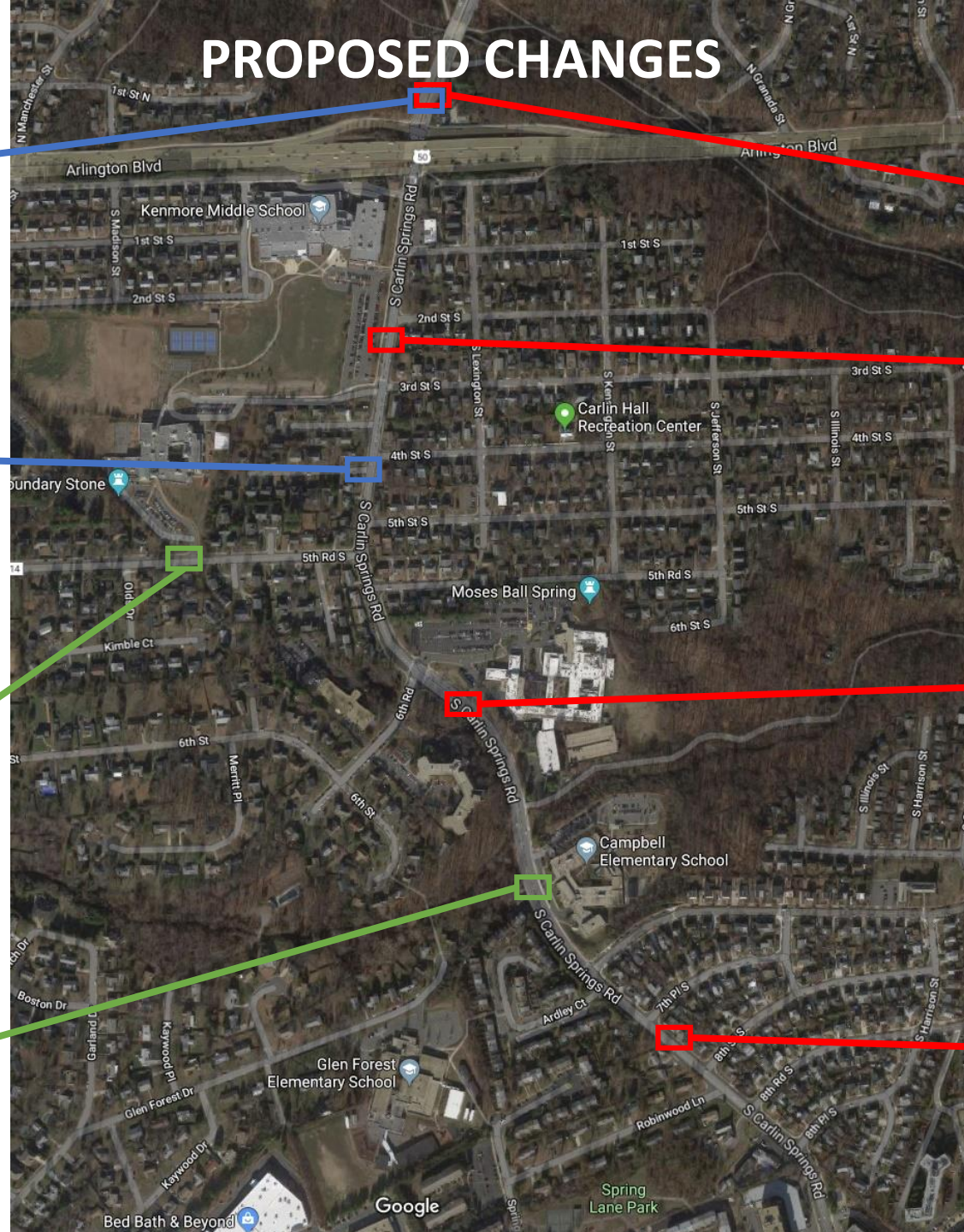


Add S1-1 in front of Campbell ES in each Direction (NB & SB)

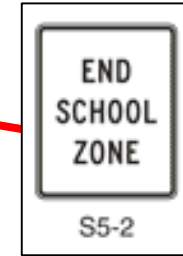


BIDIRECTIONAL

PROPOSED CHANGES



Relocate S5-2 from Campbell



NORTHBOUND

Add S1-1 in front of Kenmore (NB)



Relocate S5-2 North of US-50



Add W16-9P



Coming Soon

- Coordination on School Zone Flashers
- Addressing sidewalk overgrowth
- Short-mid term action items