

# INTEGRATED SCHEME - EXISTING SITE PLAN

APS: New Elementary School at Reed

Comments: \_\_\_\_\_

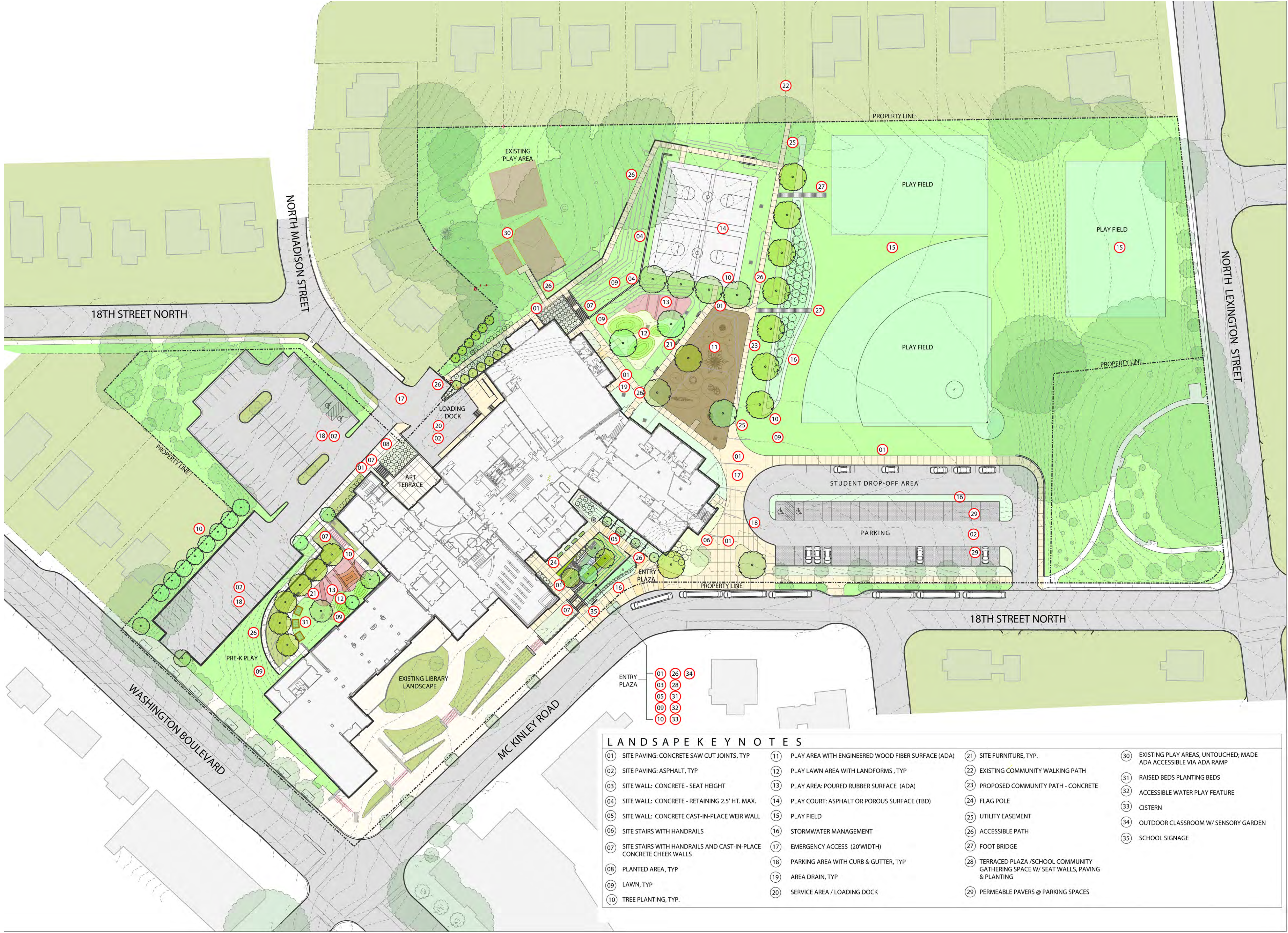




# INTEGRATED SCHEME - PROPOSED SITE PLAN

APS: New Elementary School at Reed

Comments: \_\_\_\_\_



**LANDSCAPE KEY NOTES**

01 SITE PAVING: CONCRETE SAW CUT JOINTS, TYP	11 PLAY AREA WITH ENGINEERED WOOD FIBER SURFACE (ADA)	21 SITE FURNITURE, TYP.	30 EXISTING PLAY AREAS, UNTOUCHED; MADE ADA ACCESSIBLE VIA ADA RAMP
02 SITE PAVING: ASPHALT, TYP	12 PLAY LAWN AREA WITH LANDFORMS, TYP	22 EXISTING COMMUNITY WALKING PATH	31 RAISED BEDS PLANTING BEDS
03 SITE WALL: CONCRETE - SEAT HEIGHT	13 PLAY AREA: POURED RUBBER SURFACE (ADA)	23 PROPOSED COMMUNITY PATH - CONCRETE	32 ACCESSIBLE WATER PLAY FEATURE
04 SITE WALL: CONCRETE - RETAINING 2.5' HT. MAX.	14 PLAY COURT: ASPHALT OR POROUS SURFACE (TBD)	24 FLAG POLE	33 CISTERN
05 SITE WALL: CONCRETE CAST-IN-PLACE WEIR WALL	15 PLAY FIELD	25 UTILITY EASEMENT	34 OUTDOOR CLASSROOM W/ SENSORY GARDEN
06 SITE STAIRS WITH HANDRAILS	16 STORMWATER MANAGEMENT	26 ACCESSIBLE PATH	35 SCHOOL SIGNAGE
07 SITE STAIRS WITH HANDRAILS AND CAST-IN-PLACE CONCRETE CHEEK WALLS	17 EMERGENCY ACCESS (20'WIDTH)	27 FOOT BRIDGE	
08 PLANTED AREA, TYP	18 PARKING AREA WITH CURB & GUTTER, TYP	28 TERRACED PLAZA /SCHOOL COMMUNITY GATHERING SPACE W/ SEAT WALLS, PAVING & PLANTING	
09 LAWN, TYP	19 AREA DRAIN, TYP	29 PERMEABLE PAVERS @ PARKING SPACES	
10 TREE PLANTING, TYP.	20 SERVICE AREA / LOADING DOCK		

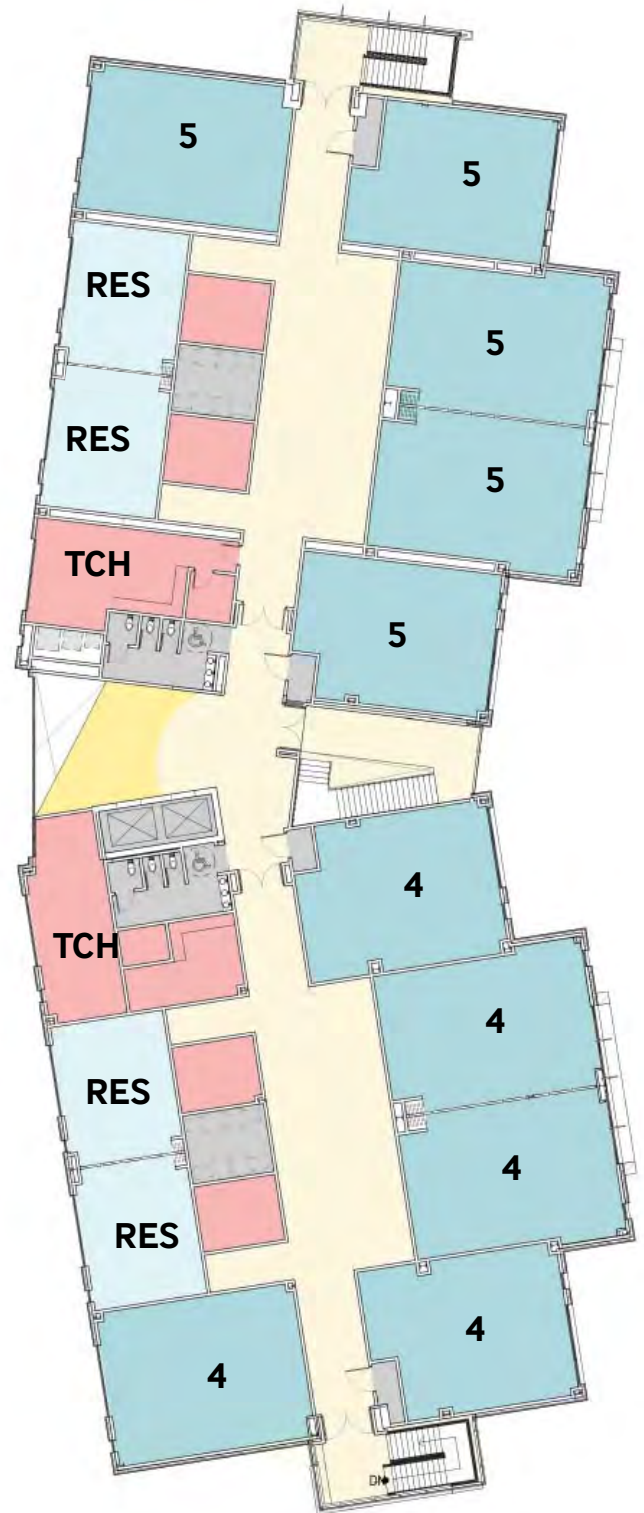


# FLOOR PLANS

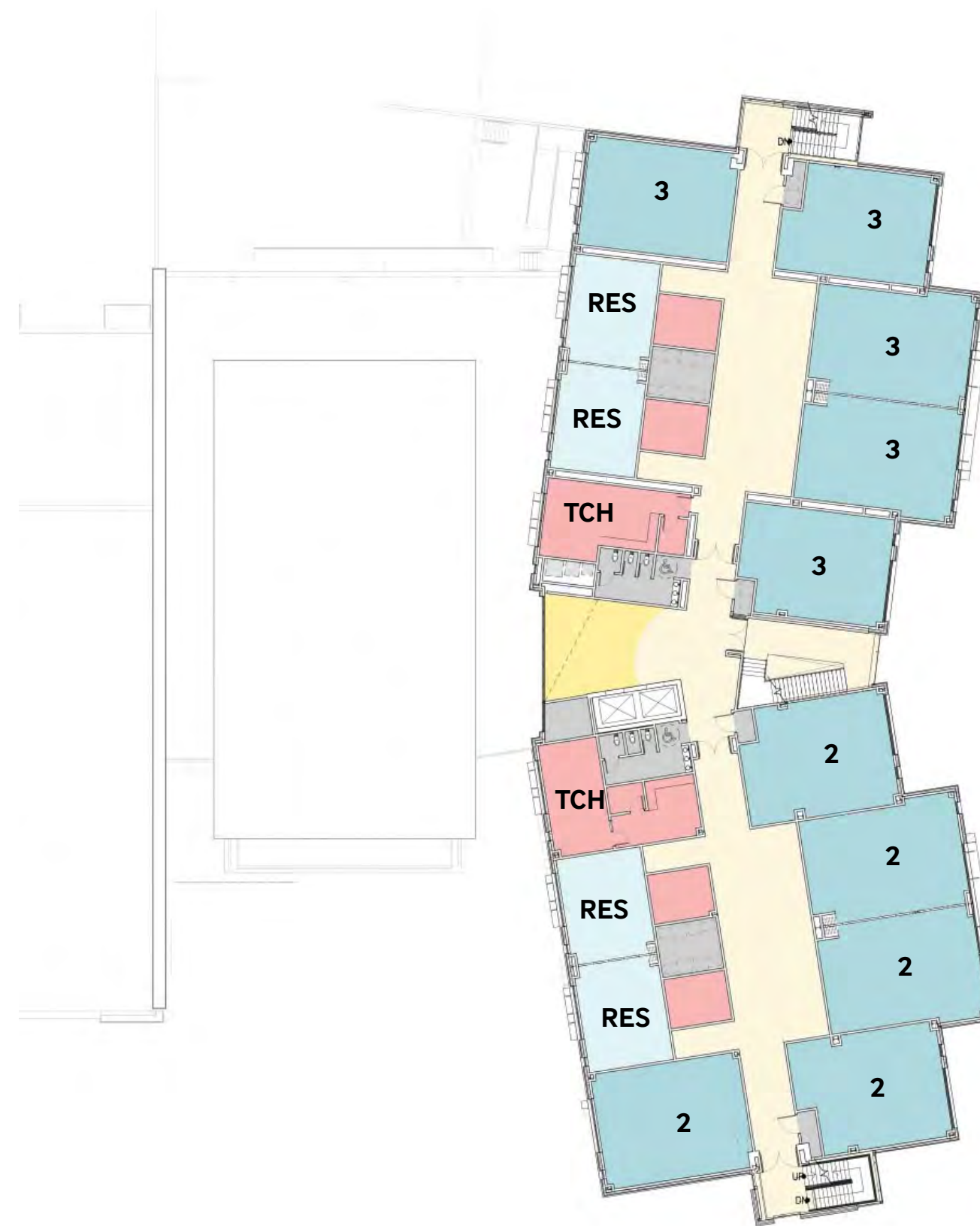
## APS: New Elementary School at Reed

### Legend

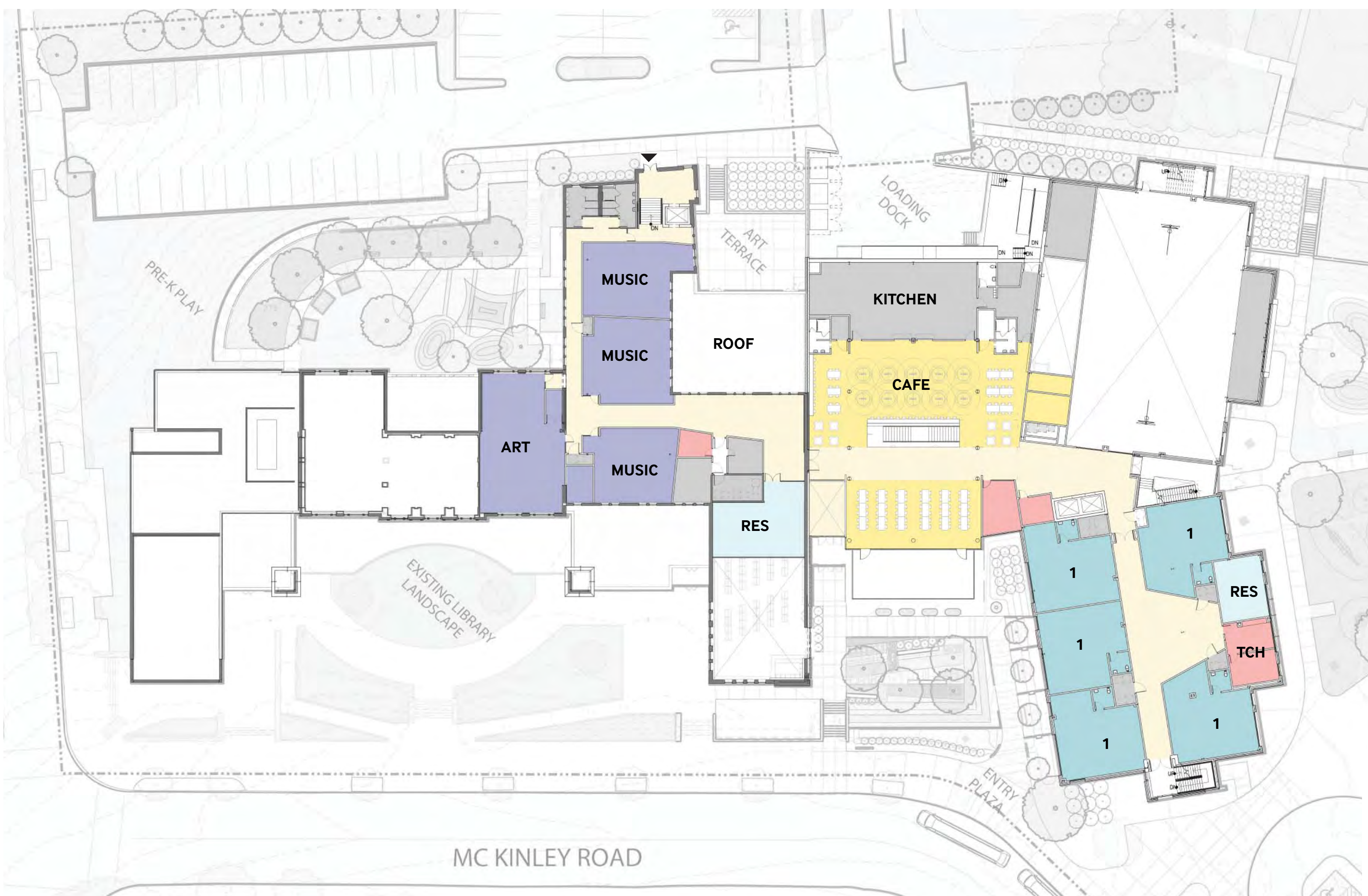
- CLASSROOM
- RESOURCE ROOM
- SHARED/PUBLIC (Dining, Library)
- PHYSICAL EDUCATION
- CORRIDOR / COMMONS
- SUPPORT
- ADMINISTRATION
- ARTS



**Level 4**  
Scale: 1/32" = 1'-0"



**Level 3**  
Scale: 1/32" = 1'-0"



**Level 2**  
Scale: 1/32" = 1'-0"



**Level 1**  
Scale: 1/32" = 1'-0"



# INTEGRATED SCHEME - RENDERS

APS: New Elementary School at Reed



Render - Intersection at Washington Blvd. & N. McKinley Rd looking North



Render - Entry at N. McKinley Rd

**Comments:**

---



# INTEGRATED SCHEME - RENDERS

APS: New Elementary School at Reed



Render - Student Drop-off looking South West



Render - Sledding Hill looking South West

**Comments:**

---

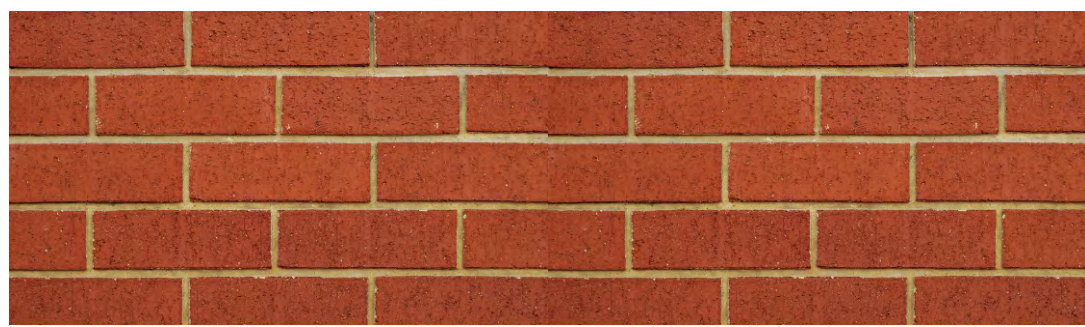


# INTEGRATED SCHEME - MATERIAL PRECEDENTS

APS: New Elementary School at Reed



Blond masonry used in an ambassador shape



Contextual brick used in standard shape



Wood  
(used only where protected from elements)



Corrugated metal panels

(used as in-fill with brick)



(used as in-fill with fiber cement)



Hardi-plank siding  
(fiber cement)

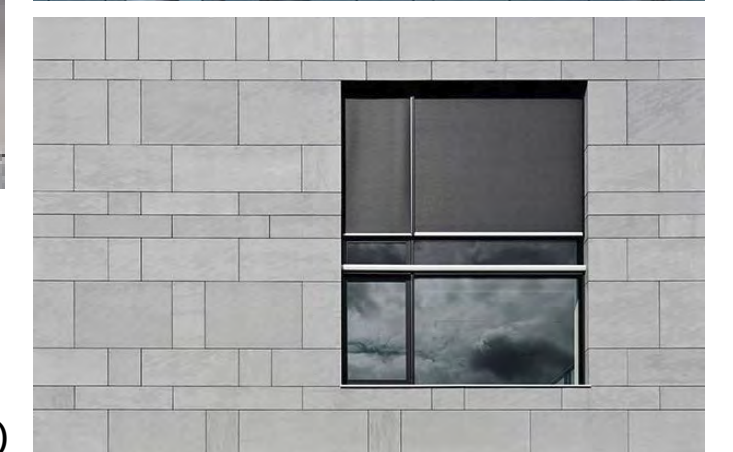


Fiber Cement Panels

(used playfully with color)



(used like coursing)



Comments:

---