



Completed and ongoing tasks:

- Erection of elevator core walls completed.
- Installation of concrete slab on grade at B2 level completed.
- Mass excavation completed.
- Perimeter wall waterproofing ongoing.
- Concrete footings and foundation walls ongoing.
- Installation of below grade utilities ongoing.
- Delivery and installation of major structural steel ongoing.
- Curtainwall material released for fabrication.
- AHU & DOAS Units for B2 were released for fabrication.

Construction activities next month:

- Concrete pour on elevated decks.
- Concrete slab on grade at G1 level

Process related activities:

- Construction activities will continue between 7am to 5pm on week days, and 9am to 5pm on weekends and holidays.
- Washington gas will continue replacement of the gas main along Wilson Blvd from N. Pierce St. to N. Quinn St.



Steel beams erected @ G1 level



Metal decking @G1 level



Underground sanitary installed



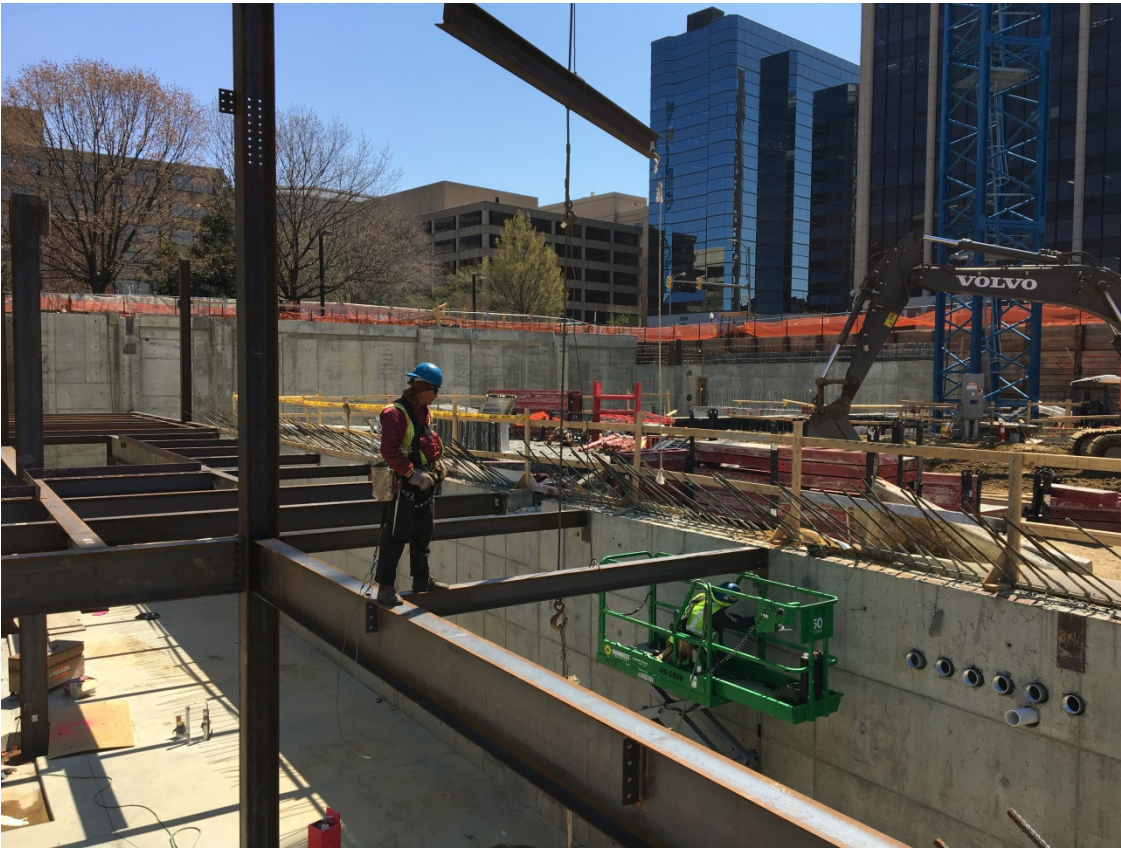
Metal decking around elevator core



Prep for step down footing @G1



Steel beams around black box theater



Steel beam installation



Column base plate



Prepare for concrete slab