



March 19, 2018
CCPTA



Arlington Public Schools



Elementary School Planning Initiative

AGENDA

- I. Overview: Elementary School Planning Initiative**
- II. Elementary School Location & Walk Zone Review**
- III. Upcoming Community Engagement**
- IV. Phase 2: Elementary School Boundaries**
- V. Questions**



Elementary School Planning Initiative

- APS has multiple elementary school openings and program moves:
 - **Sept. 2019:** Alice Fleet opens as neighborhood school
 - **Sept. 2019:** Elementary Montessori program moves from Drew to Henry site, and Drew opens as full neighborhood school
 - **Sept. 2021:** Reed opens as neighborhood school
- When APS opens new schools, School Board policy requires:
 - Development of attendance zones for the new schools
 - Boundary adjustments at existing schools
 - Better balance of student enrollment throughout schools



Overview: Elementary School Planning Initiative

- **The School Board established the initiative's scope and process**
 - Staff will develop two proposals to create attendance zones for all elementary schools planned through 2021.
 - One proposal: recommend strategic placement of option and neighborhood schools, and adjust boundaries to include new schools.
 - Second proposal: keep option schools at current sites and adjust boundaries to include the new schools.
- **Two-phased Initiative**
 - **Spring 2018:** Phase 1: Elementary School Location & Walk Zone Review
 - **Fall 2018:** Phase 2: Elementary School Boundaries
- **School Board Action**
 - **June 2018:** School Board action to designate elementary school sites as either neighborhood or option schools
 - **November 2018:** School Board action to adopt elementary boundaries



Elementary School Location & Walk Zone Review

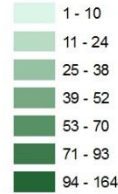
Elementary School Location Review

- APS may be able to optimize resources by placing neighborhood schools where large numbers of students live.
- This process could result in changing a neighborhood school site to an option school site, or vice versa .
- Staff proposals will be based on student resident data and many other considerations in recommending school locations.
- APS wants to ensure equitable access to option schools

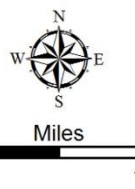
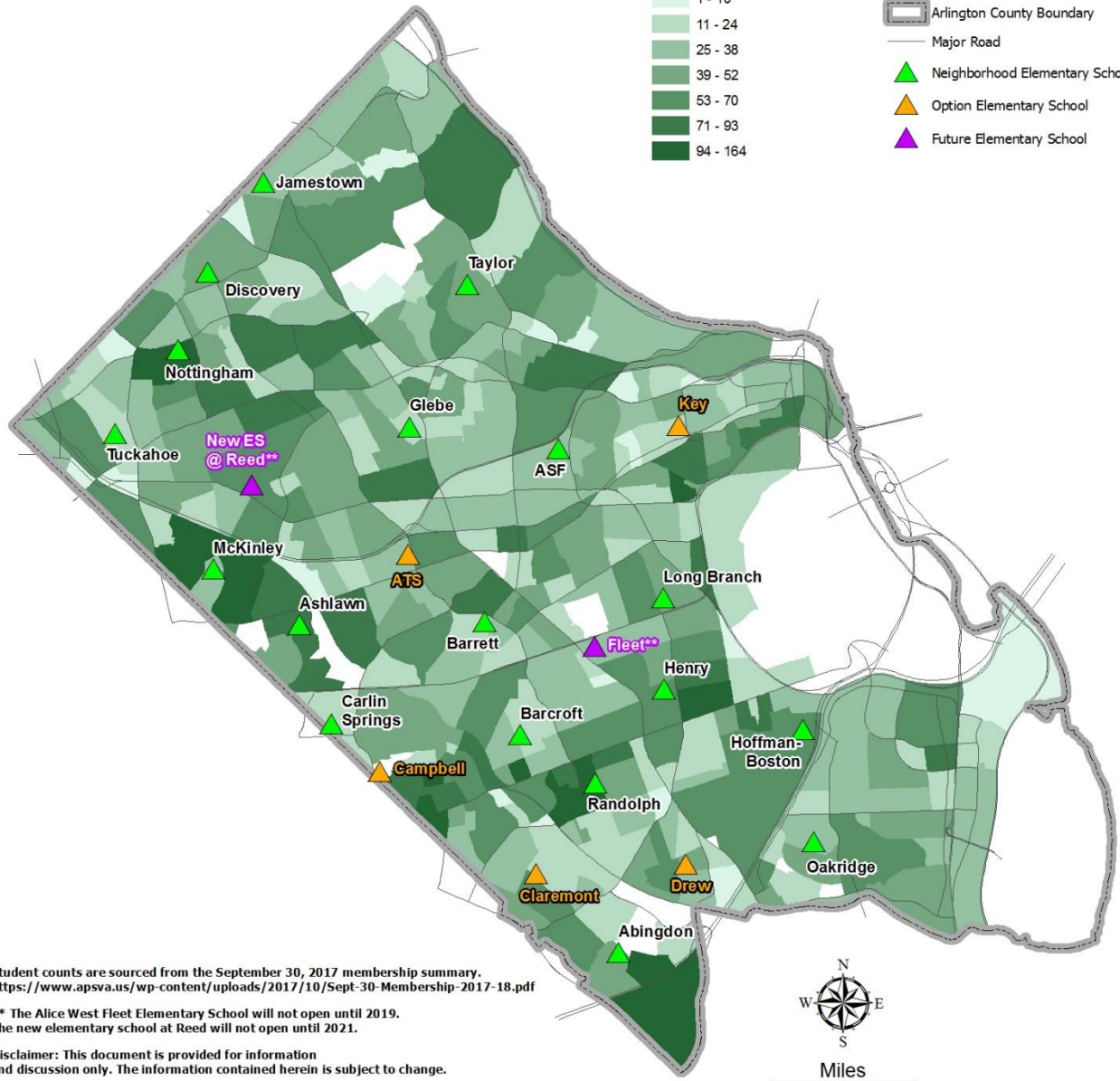
Elementary School Walk Zone Review

- Reducing growth in transportation costs can create greater efficiencies and help keep more funds in classrooms.
- Walking is a priority given recent community input and strong interest in keeping our communities walkable.

Total Resident Student Counts for Grades K - 5



Other Map Features



Student counts are sourced from the September 30, 2017 membership summary.
<https://www.apsva.us/wp-content/uploads/2017/10/Sept-30-Membership-2017-18.pdf>

** The Alice West Fleet Elementary School will not open until 2019.
 The new elementary school at Reed will not open until 2021.

Disclaimer: This document is provided for information and discussion only. The information contained herein is subject to change.

Source: Arlington County GIS Mapping Center, 2018.
 Arlington County Public Schools, Facilities Planning, 2018.

S:\Facilities\Facilities Planning\GIS\Boundary_Adj\2018\ES\Stu17K5_PP.mxd

1/19/2018

- Current and future elementary schools
- **Current K-5 resident students by planning unit**



Elementary School Location & Walk Zone Review

Elementary School Location Review Process

- **Feb. 26-March 9:** Community members reviewed initial considerations for neighborhood & option school location recommendations, and suggested additional considerations for staff to take into account.
- **March 26:** Staff will post draft considerations that will be used to develop recommendations—www.apsva.us/engage.
- **April 12:** Staff will post initial draft recommendations for neighborhood and option school sites—www.apsva.us/engage.
- **April 12-26:** Residents can use online questionnaire to provide feedback on initial draft recommendations.
- **May 1:** Community meeting for staff to present recommendations and answer questions. (YHS cafeteria, 7 p.m.)
- **May 17:** Superintendent presents two proposals to School Board.
- **June 21:** School Board action on proposals. If any schools are to move, this decision will not specify which option schools will be located at specific sites.



Elementary School Location & Walk Zone Review

Next Steps: Elementary School Location Review Process

- **By June 2019:** IF any schools will move to a new location, then the Dept. of Teaching and Learning will lead the effort to recommend placing specific schools at identified sites.
- **Summer 2020 and 2021:** Schools that are identified as potentially changing from neighborhood to option schools, or vice versa, could move entirely to the new location. This would include:
 - Relocating administration, faculty, and staff to the new school
 - Moving any special established amenities and resources to the new school

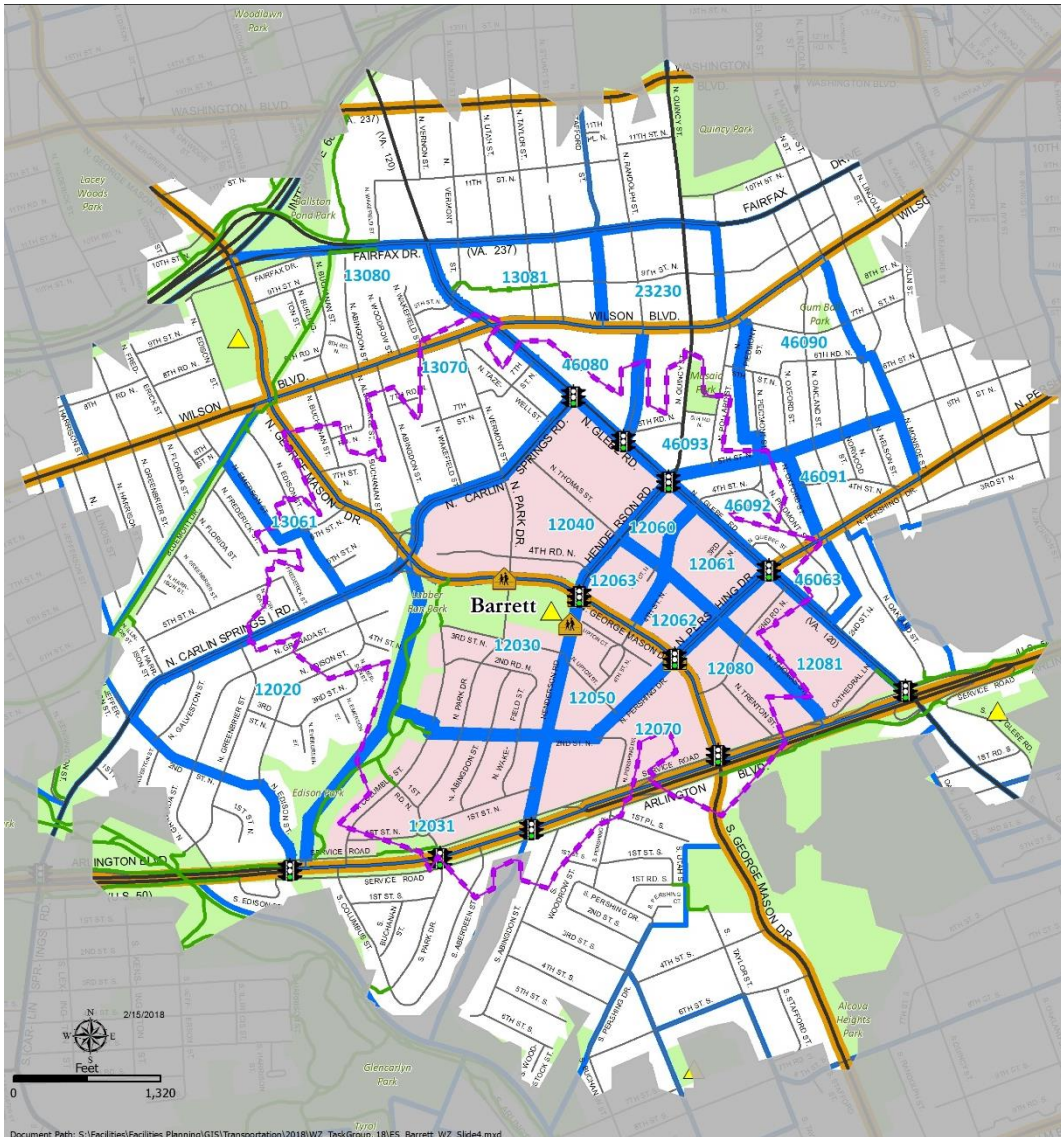


Walk Zone Review Process: Currently Underway

- Work with a Task Group for every elementary school to review walk zones and identify potential areas for safe expansion.
 - Ambassadors and PTA representatives from all elementary schools and 23 Civic Associations
 - School-specific walk zone maps, school travel patterns, outreach tool kit
 - Two working sessions with every School Task Group:
 - Explain process/provide materials for gathering community input
 - Share online input and potential revisions to walk zones
- Nearly 1700 responses to questionnaires seeking input on elementary school walk zones and infrastructure improvements to make areas safer for elementary students.
- Information shared with school principals, FAC, ACTC, Hispanic parent groups and CCPTA (tonight).



Walk Zone Review: Reading the Map



Legend

Walk Zones

- One Mile Per Policy
APS PIP 50-5.1
- Current Walk Zone
- Not Eligible for Bus Service, May 2013
- Half-Mile Walk Shed

Street Crossing Designation

- Only Middle and High School Students may Cross*
- No Grade Levels may Cross*

Other Map Features

- ARL County Boundary
- Planning Units
- Elementary School
- Crossing Guard
- Signalized Crossing
- Off-Street Trail

Document Path: S:\Facilities\Facilities Planning\GIS\Transportation\2018\WZ_TaskGroup_18\ES_Barrett_WZ_Slide4.mxd



Elementary School Location & Walk Zone Review

Survey Participation x

You have accessed this survey in TEST MODE. Your answers will not be recorded

Within planning unit 14060 which specific locations, intersections, or nearest address, would benefit from additional infrastructure to make it safer for elementary students to cross?

	Location (intersections or nearest address)	Please answer below
Location 1	<input type="text"/>	--Select--
Location 2	<input type="text"/>	Add a pedestrian push-to-walk signal or audible signal
Location 3	<input type="text"/>	Increase the amount of time for people to cross
Location 4	<input type="text"/>	Decrease the amount of time people have to wait before crossing
Location 5	<input type="text"/>	Add a traffic signal or HAWK signal
Location 6	<input type="text"/>	Improve the crosswalk markings
Location 7	<input type="text"/>	Install traffic calming measures
Location 8	<input type="text"/>	Place crossing guard to reduce distance between safe crossings
Location 9	<input type="text"/>	Connect sidewalk segments
Location 10	<input type="text"/>	Widen sidewalks

You have accessed this survey in TEST MODE. Your answers will not be recorded



Walk Zone Review Process: Synthesizing Community Input

- The community has identified many PUs that could potentially be added to the walk zone.
- APS transportation experts are working on two ‘buckets’ for Planning Unit recommendations
 - Probable expansion of walk zone
 - Require further study
- Planning Units that are ‘probable’
 - Entirely within the 1-mile policy walk zone
 - Pose no major safety concerns
 - People are already walking from these PUs
- APS Transportation will study:
 - # of student impacted
 - Safety analysis
 - Feasibility
 - Cost
 - Other





Elementary School Location & Walk Zone Review

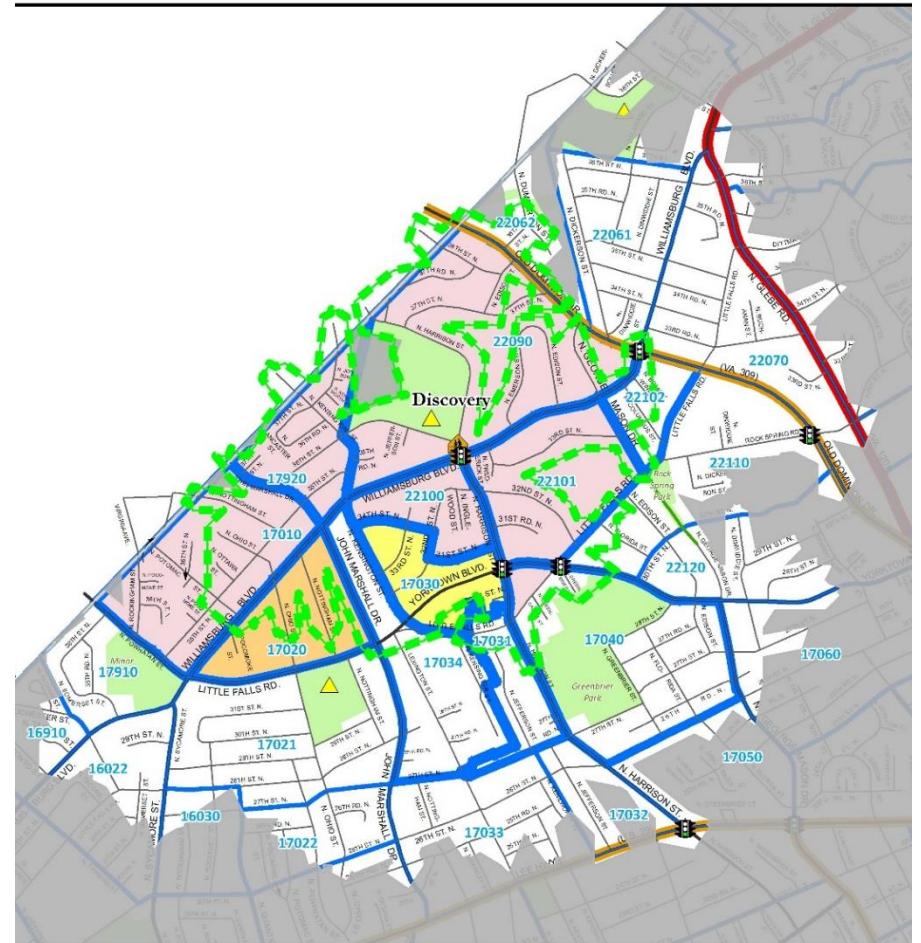
Discovery Elementary School Walk Zone

Sample Map

Pink: Current walk zone

Yellow: Probable extension of walk zone

Orange: Requires further study for potential expansion of walk zone



Note: Students who live in the walk zone are not eligible for bus service

— One Mile Per Policy
 — APS PEP 50-5.1
 — Current Walk Zone
 — Not Eligible for Bus Service, July 2015
 — Half-Mile Walk Shed
 — Probable Expansion of Walk Zone
 — Not Eligible for Bus Service
 — Potential Expansion of Walk Zone
 — Not Eligible for Bus Service
 — Street Crossing Designation
 — Only Middle and High School Students may Cross*
 — No Grade Levels may Cross*

Other Map Features
 — ARL County Boundary
 — Planning Units
 — Elementary School
 — Crossing Guard
 — Signalized Crossing
 — Off-Street Trail

Location Map
 0 1,320 Feet
 3/15/2018
 Arlington Public Schools

Disclaimer: This document is a working draft and is provided for information and discussion only. The information contained herein is subject to change.
 * All roadway segments are subject to change based on the locations of crossing guards.
 S:\Facilities\Facilities Planning\GIS\Transportation\2018\WZ_TaskGroup_14\05_Discovery_WZ_Policy_Review2.mxd
 Source: Arlington County GIS Mapping Center, 2018; Arlington County Public Schools, Transportation Services, 2018.



Upcoming Community Engagement

- Questionnaire on draft recommendations for neighborhood and option school locations—April 12-26: www.apsva.us/engage
- Staff Office Hours Sessions (Spanish-speaking staff available):
 - Monday, April 16: 7-8:30 p.m., Wakefield H.S.
 - Friday, April 20: 7:30-9 a.m., Education Center
 - Saturday, April 21: 9:30-11 a.m., Kenmore M.S.
- Community Meeting—Staff will present draft recommendations and answer questions
 - Tuesday, May 1, at 7 p.m.
 - Yorktown High School (5200 Yorktown Blvd.)
 - Live-streamed, with simultaneous interpretation
- Write to engage@apsva.us



Elementary School Planning Initiative

Phase 2: Elementary Boundaries

- **September – November 2018:** During the second phase of this initiative, staff will conduct community engagement and finalize recommended elementary school boundaries.
- **Nov. 2018:** School Board will take action on recommended boundaries
- **February 2019:** Kindergarten Registration Begins
- **Fall 2019:** New Boundaries Implemented
- **Ongoing:** Work with County Dept. of Transportation on “walkability needs” such as crossing guards, sidewalks, other safety improvements



Questions?



ELEMENTARY SCHOOL PLANNING INITIATIVE

**March 19, 2018
CCPTA**



Arlington Public Schools