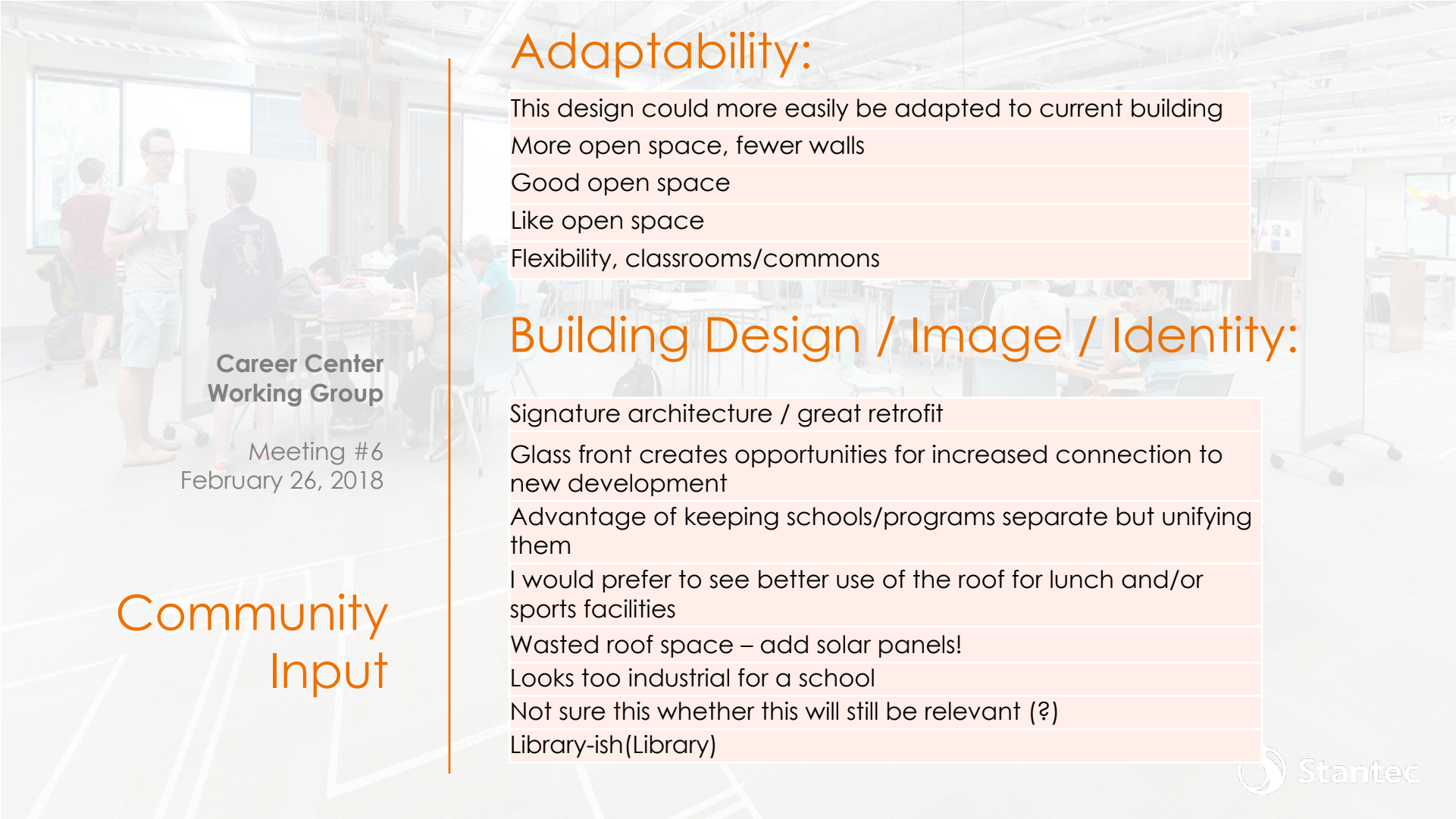


Career Center Working Group
Meeting No. 4
2.26.18

Arlington Career Center





Career Center
Working Group

Meeting #6
February 26, 2018

Community Input

Adaptability:

- This design could more easily be adapted to current building
- More open space, fewer walls
- Good open space
- Like open space
- Flexibility, classrooms/commons

Building Design / Image / Identity:

- Signature architecture / great retrofit
- Glass front creates opportunities for increased connection to new development
- Advantage of keeping schools/programs separate but unifying them
- I would prefer to see better use of the roof for lunch and/or sports facilities
- Wasted roof space – add solar panels!
- Looks too industrial for a school
- Not sure this whether this will still be relevant (?)
- Library-ish(Library)





Learning Spaces:

- Would hope that a media center would still provide a few quiet areas for individual study
- Opportunity to use underground for specialized programs, specifically auto tech bays, etc
- Like the use of space while creating an intimate campus in the center
- Integrated learning environment
- Currently how students engage (?) (Collaboration)

Career Center Working Group

Meeting #6
February 26, 2018

Light:

- Like glass and natural light
- Natural light
- Like light and color
- Natural light
- Interior windows
- Open, bright, flexible

Community Input



Cost / Economy

Save money to build on existing frame

Does this degree of reconstruction really save money and time over demolition and a new building?

We likely won't have the money for this.

More energy efficient design more difficult?

Costs more to make energy efficient

Career Center
Working Group

Meeting #6
February 26, 2018

Community
Input

Remodel / Reuse:

Still have old, original structure, cannot use the ability to go below grade

Gutting does not increase base surface area

If you start with an ugly, old, inefficient building, you're limiting what can be done.

Don't get too excited about using old structures





Site Development:

Career Center Working Group

Meeting #6
February 26, 2018

Community Input

- Not tall enough
- Building layout creates safe external space
- Outdoor space is really nice
- Central outdoor commons is a good idea
- This doesn't go high enough to provide open space, too few floors
- Too much hardscaping, limited open space/recreation space
- Too low, only 3 stories
- Would [creating] more open space have been reason to move up another floor?
- Goes vertical to free up green space
- Provides safe "group space," uses lot well, allows for more open space by going up
- Best use of space by building up
- The building would have to be extremely tall to have this much green space in the middle
- Intense courtyard, quiet space
- Maximizes open space
- Good use of underground space, like the green roof
- Small wing on each side conducive to space for ACHS
- Good use of roof space
- Green roofs limit external land usage requirements
- Good use of underground space, like the green roof



Community Connections / Concerns:

**Career Center
Working Group**

Meeting #6
February 26, 2018

Community
Input

- Too modern for the neighborhood
- Well-integrated, similar to Pike
- Step down from Columbia Pike to residential, following streetscape (?)
- Good connection between commercial and low density residential
- 2000 kids will be walking to school in 2022
- Central oasis/shared space
- Excellent fit into the community and environment
- Overwhelms the neighborhood
- Rooftop garden may not be easily accessible to broader community
- Community concerns about shadow
- Too high for the neighborhood/isolates from neighborhood
- Rooftop garden may not be easily accessible to broader community
- Community – student engagement opportunities
- Can be community/evening gathering space
- Safety and security – minors mixed with adults
- More appropriate for county library, not a school
- Not fitting for a high school
- Too noisy
- Too crowded



Flexibility:

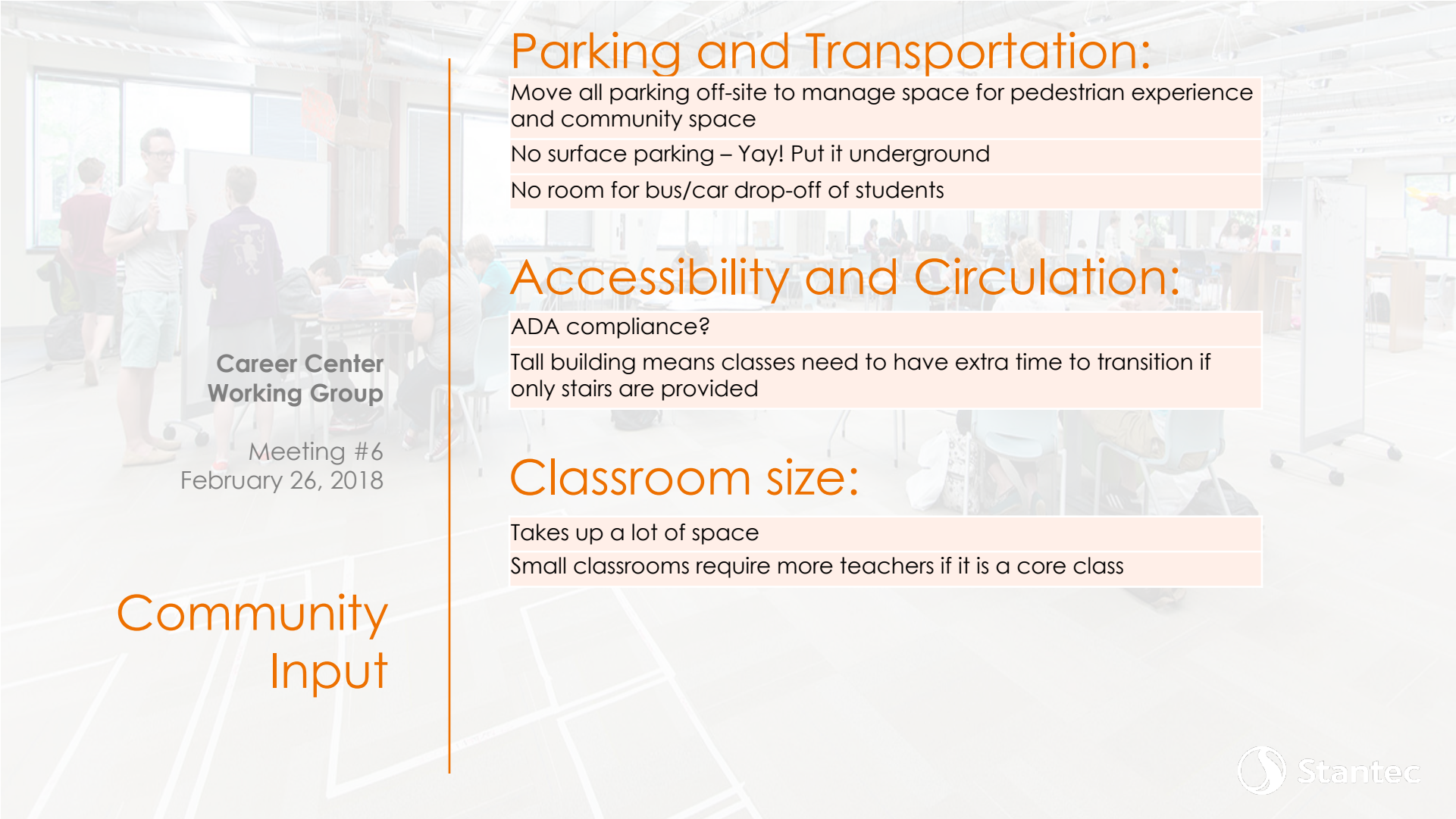
Career Center Working Group

Meeting #6
February 26, 2018

Community Input

- Flexible, easy-to-use collaborative space, more in line with college campus and aligned with project-based learning model.
- Flexible space-multi use
- Moveable furniture – multi use
- Flexible space – can accommodate different learning environments
- Moveable furniture is beneficial!
- Noisy
- Flex use for the whole day (lunch and breakout meetings)
- White board partitions to separate spaces, moveable furniture allows flexibility
- All walls have whiteboards
- White board walls
- Caution to be wary of “educational fads” in education pedagogy/approaches that overly influence design spaces, which may be costly to renovate/change in the future to accommodate different approach to classroom/learning
- Open space with multi purpose “hanging space,”
- Like flow and openness
- Great common area
- Mixed use study, eating, collaborating, multi-level (classrooms up top)
- If just Arlington Tech, how to create space with multiple programs?
- Unfriendly for introverts
- No quiet space for study
- Noisy
- Some kids avoid social environment of cafeteria and eat in classrooms
- Vulnerable to distraction
- Flexible learning spaces

ec



**Career Center
Working Group**

Meeting #6
February 26, 2018

Community
Input

Parking and Transportation:

Move all parking off-site to manage space for pedestrian experience and community space

No surface parking – Yay! Put it underground

No room for bus/car drop-off of students

Accessibility and Circulation:

ADA compliance?

Tall building means classes need to have extra time to transition if only stairs are provided

Classroom size:

Takes up a lot of space

Small classrooms require more teachers if it is a core class

Shared Use:

What about having an auditorium that can be broken up into classroom space when the auditorium isn't be used?

Not clear if this is a flex space

Like the windows to look in/out – natural light (Multi-use Performance)

Flexible

Good combo of gym/auditorium

Likely conflict between drama and gym needs (agree, but perhaps this wouldn't be the only gym/indoor recreation space

Could be used for many things but ideal for nothing

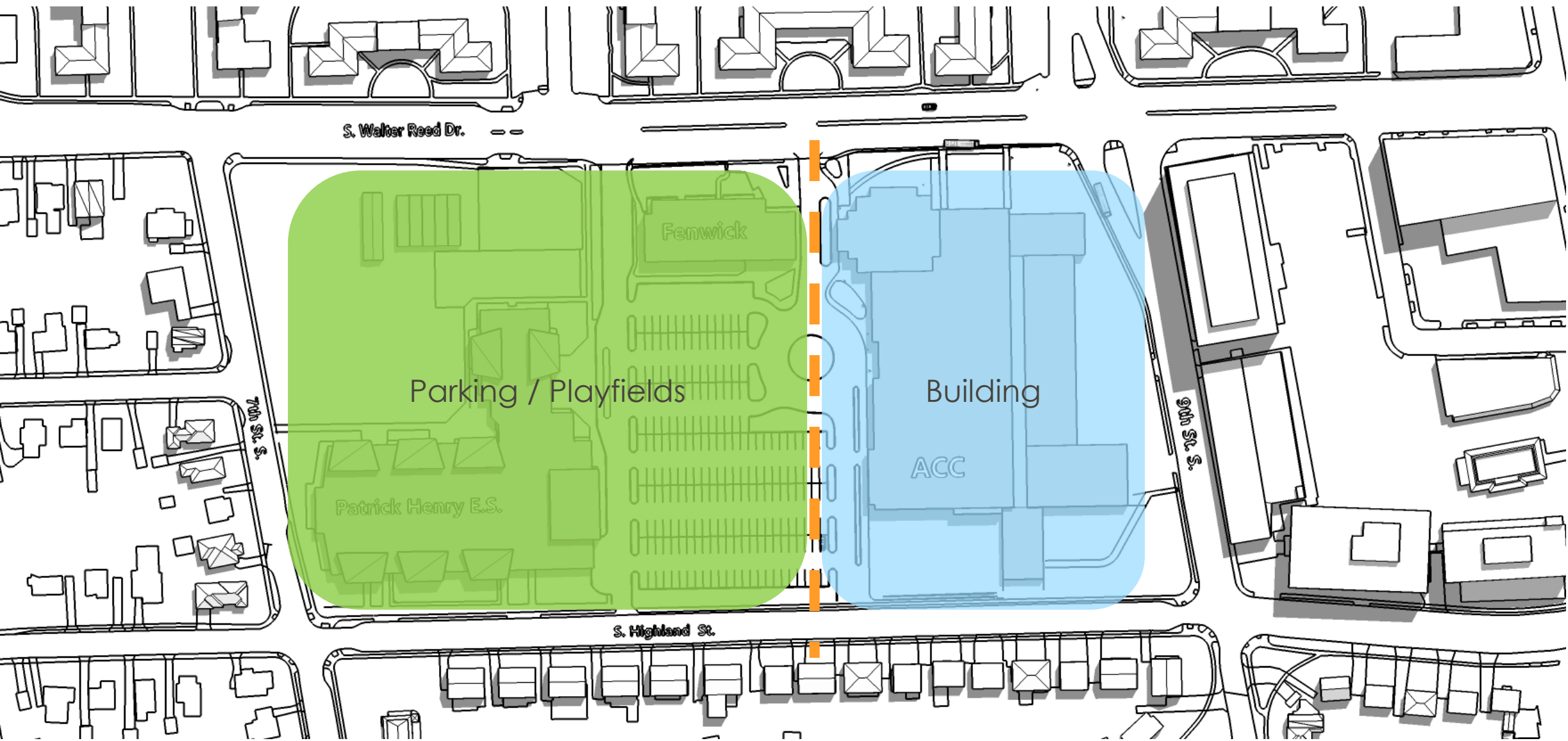
Don't create schedule conflicts trying to squeeze in space

**Career Center
Working Group**

Meeting #6
February 26, 2018

Community
Input





Site Optimization Diagram

Site Options

All Options:

- Reflect a similar approach to site optimization (building & parking/playfields)
- Can be accomplished as mid-rise construction (< 75' to highest occupied floor)
- Retain Henry ES and Fenwick buildings for as long as necessary
- Maintain the public library in its current location
- Build new space on top of the existing Career Center roof
- Assume all new roofs are used for outdoor learning, play courts or storm water mgmnt
- Provide options for athletic fields and sports programs
- Provide options for structured parking on site

Site Options - building

2022-23 school year:

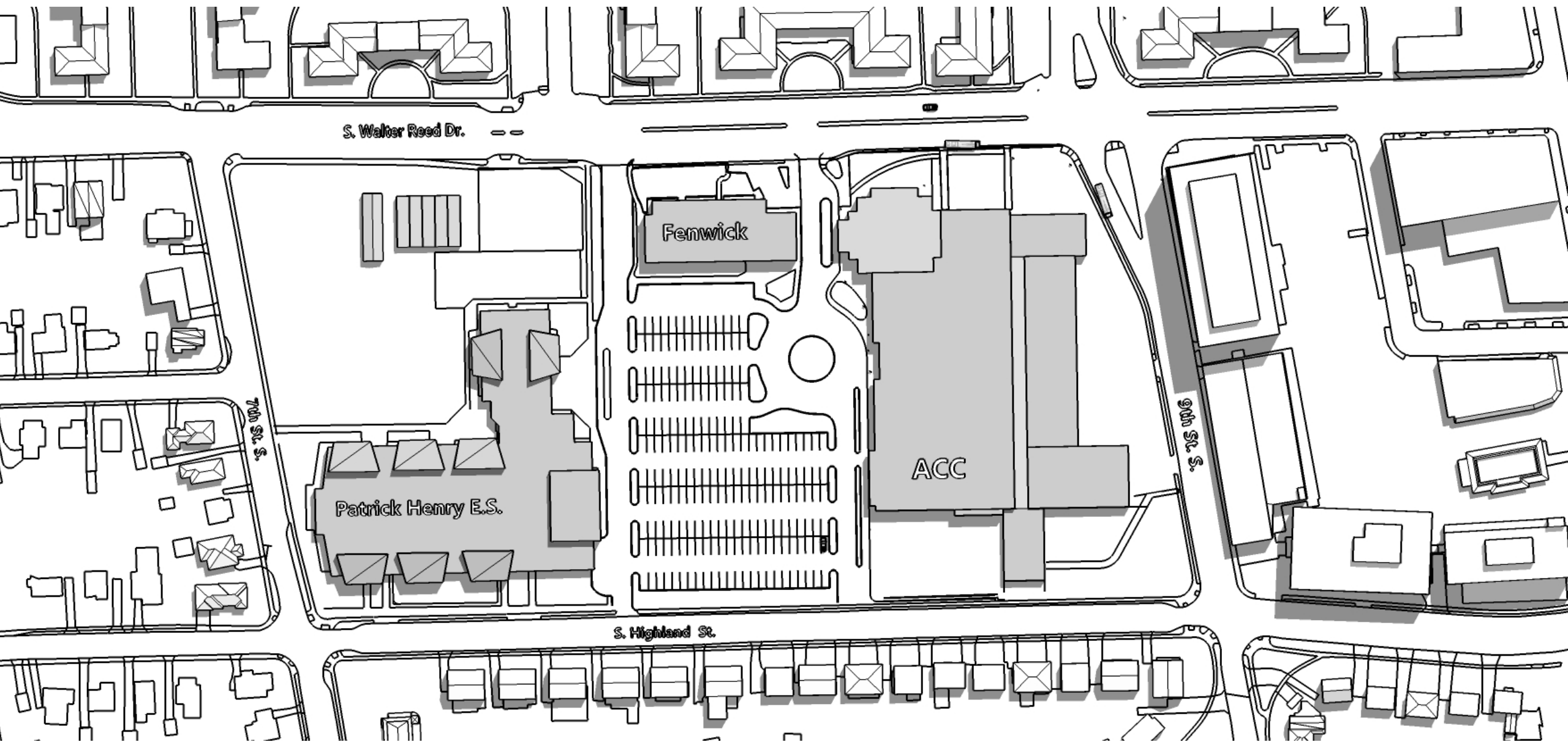
Maintains Fenwick and Henry ES (Montessori program)
Provides space for **800** Arlington Tech students
Provides space for **800** additional high school students

Option 1:

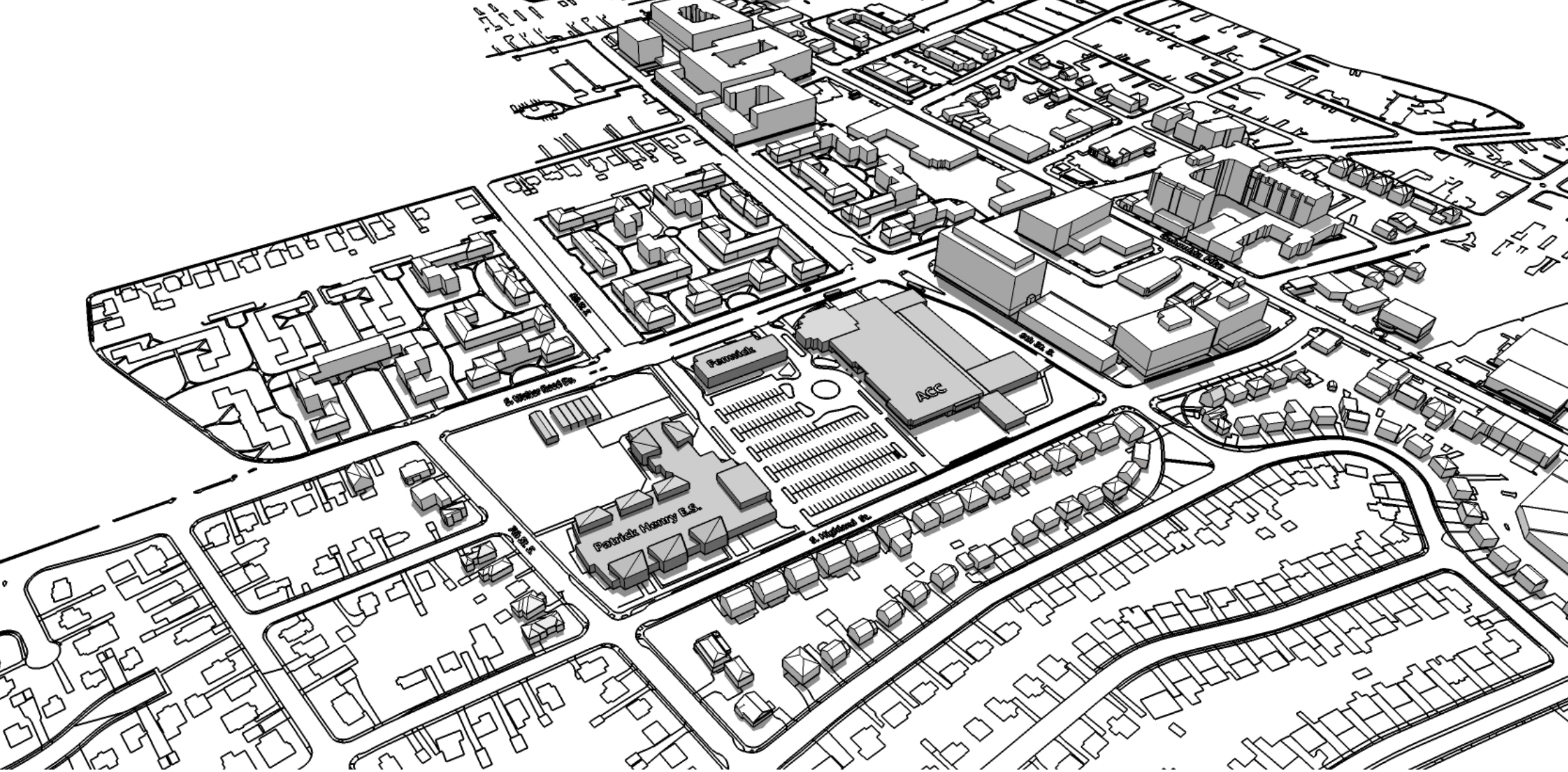
Maintains Fenwick and Henry ES (Montessori program)
Provides space for **800** Arlington Tech students
Provides space for **1300** additional high school students

Option 2:

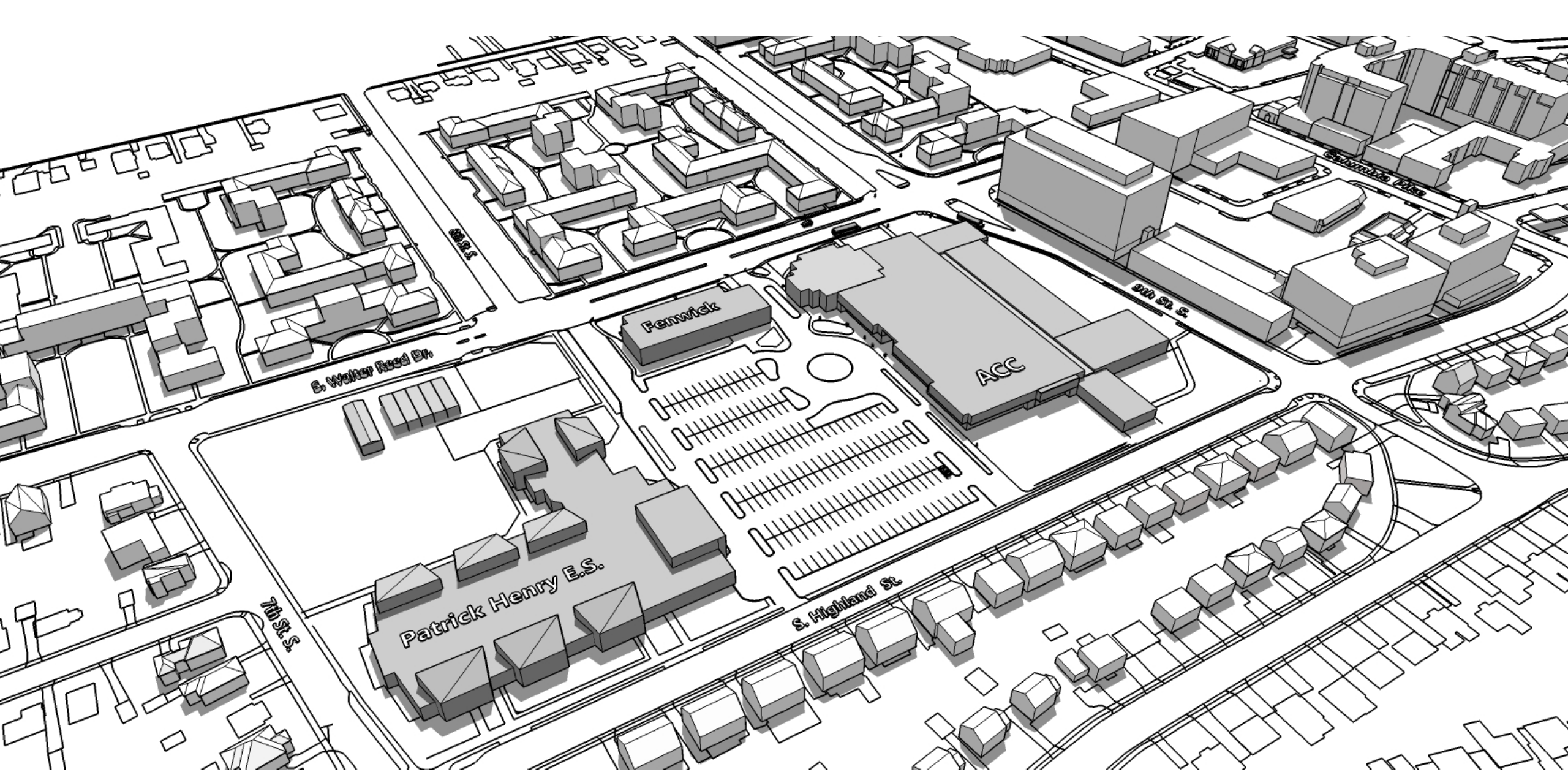
Maintains Fenwick and Henry ES (Montessori program)
Provides space for **800** Arlington Tech students
Provides space for **2300** addition high school students



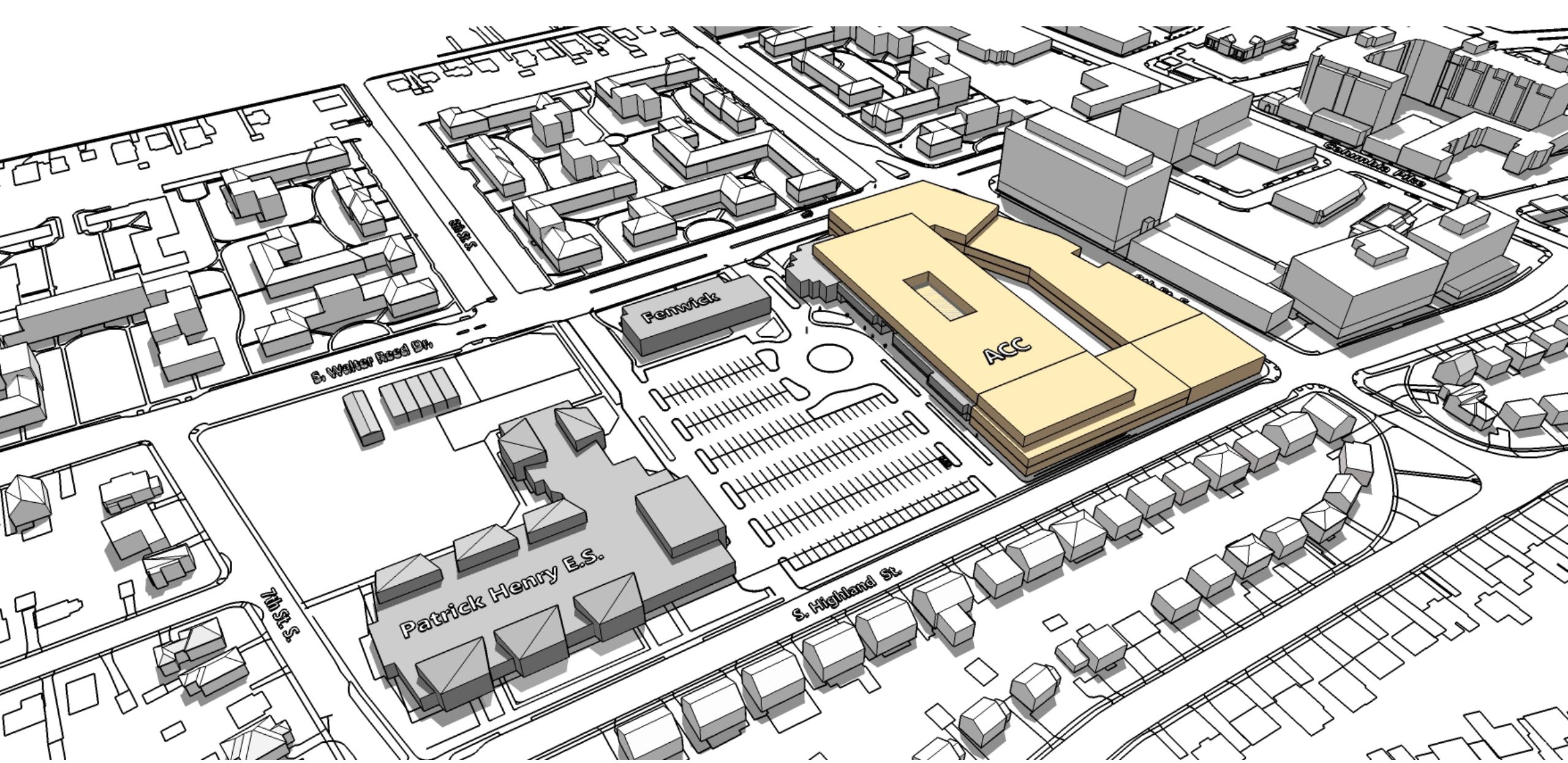
Existing Condition



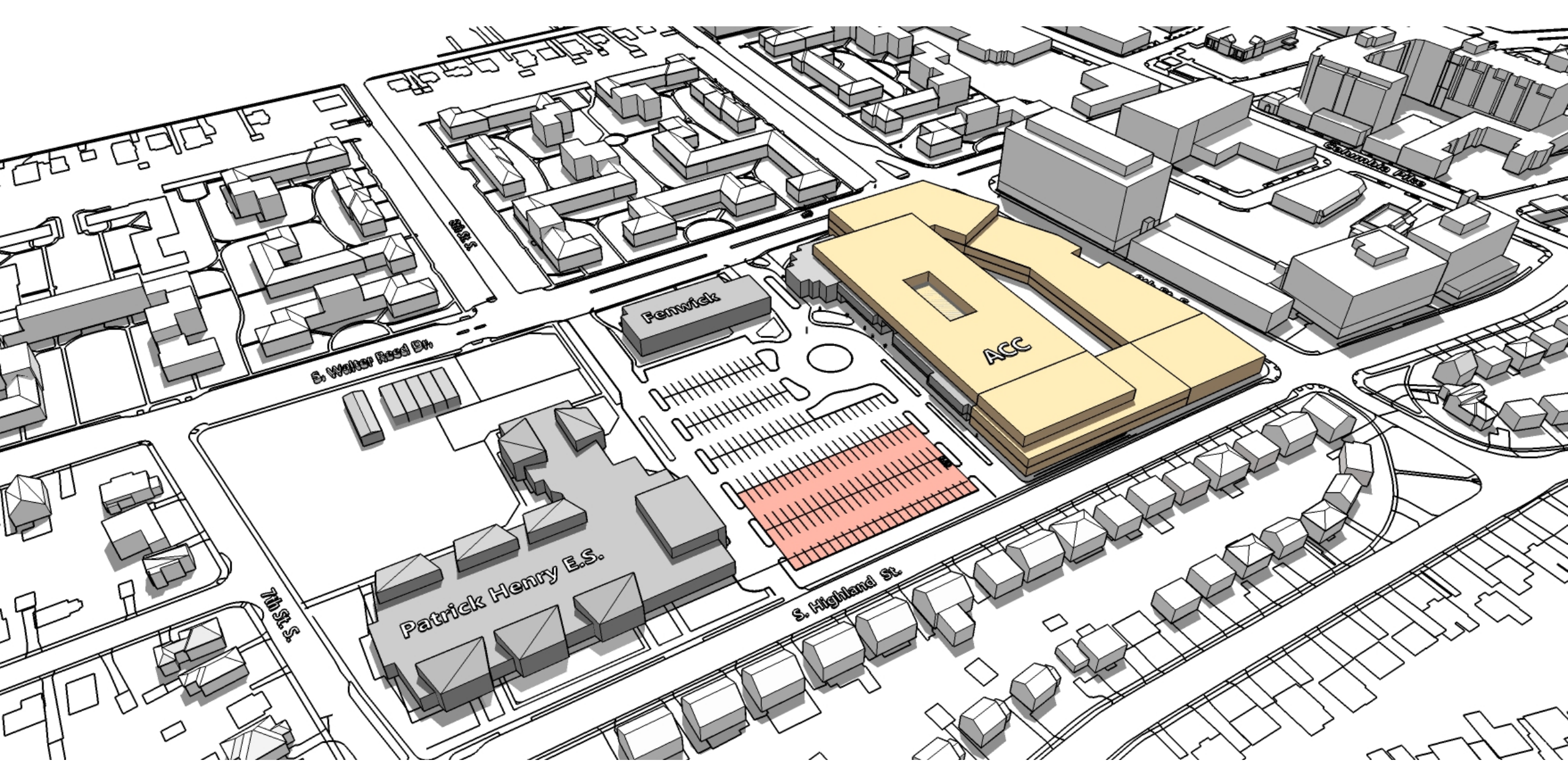
Existing Condition



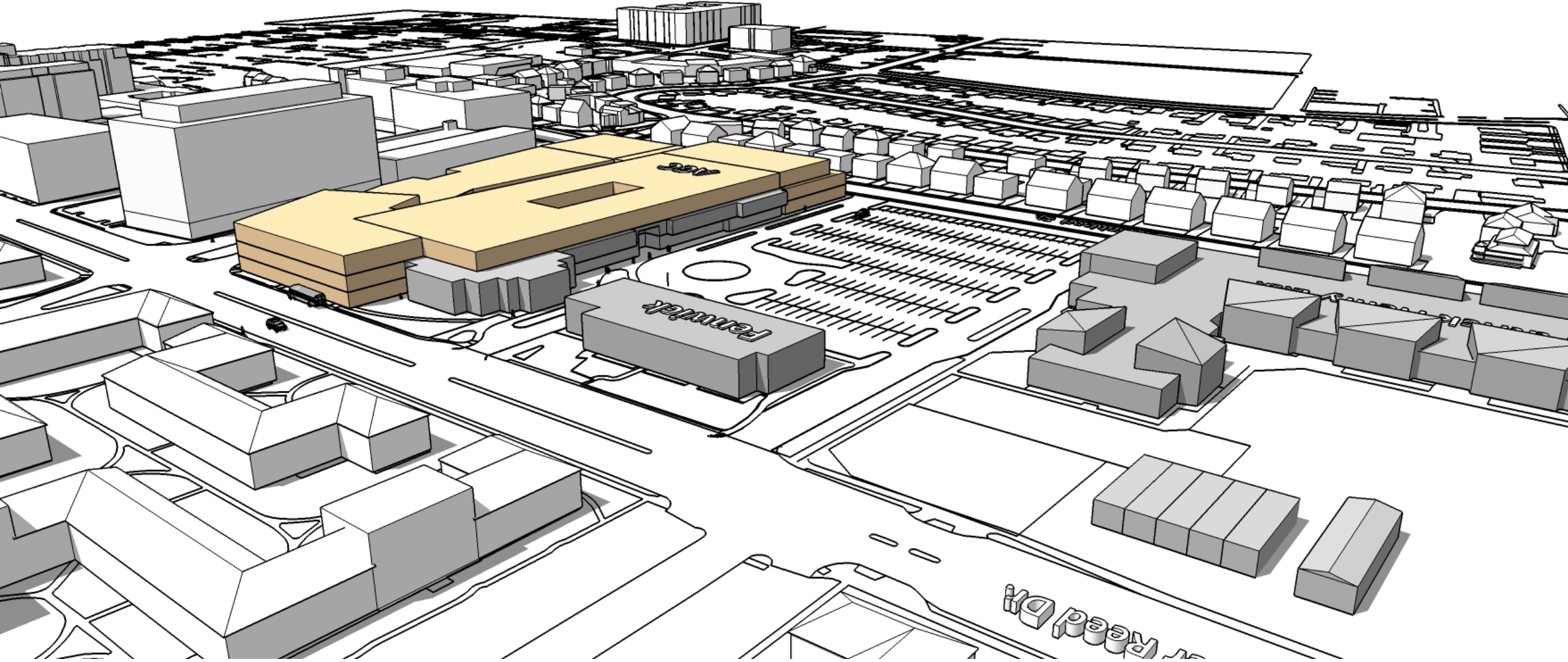
Existing Condition



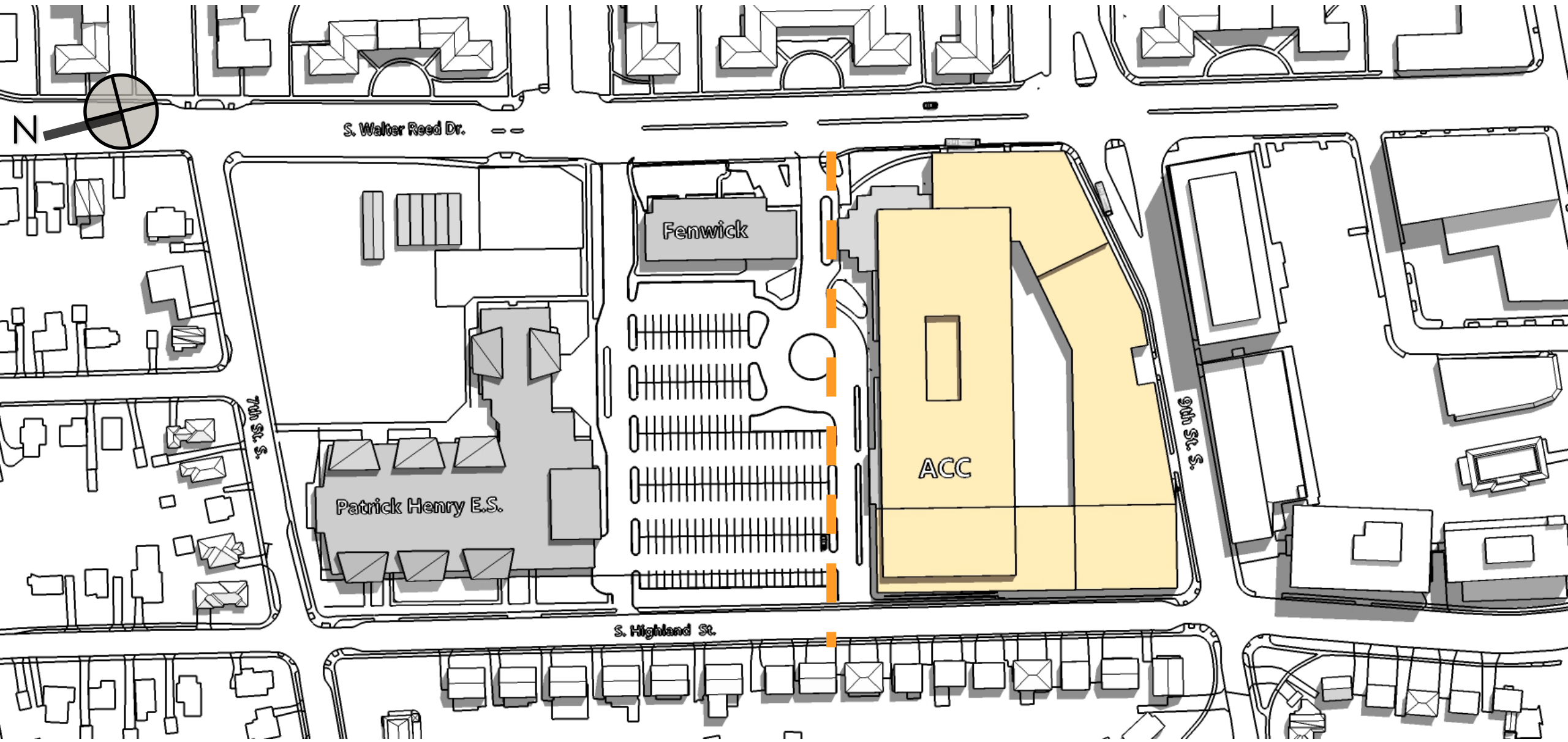
2022-23 School Year: Add 800 HS seats



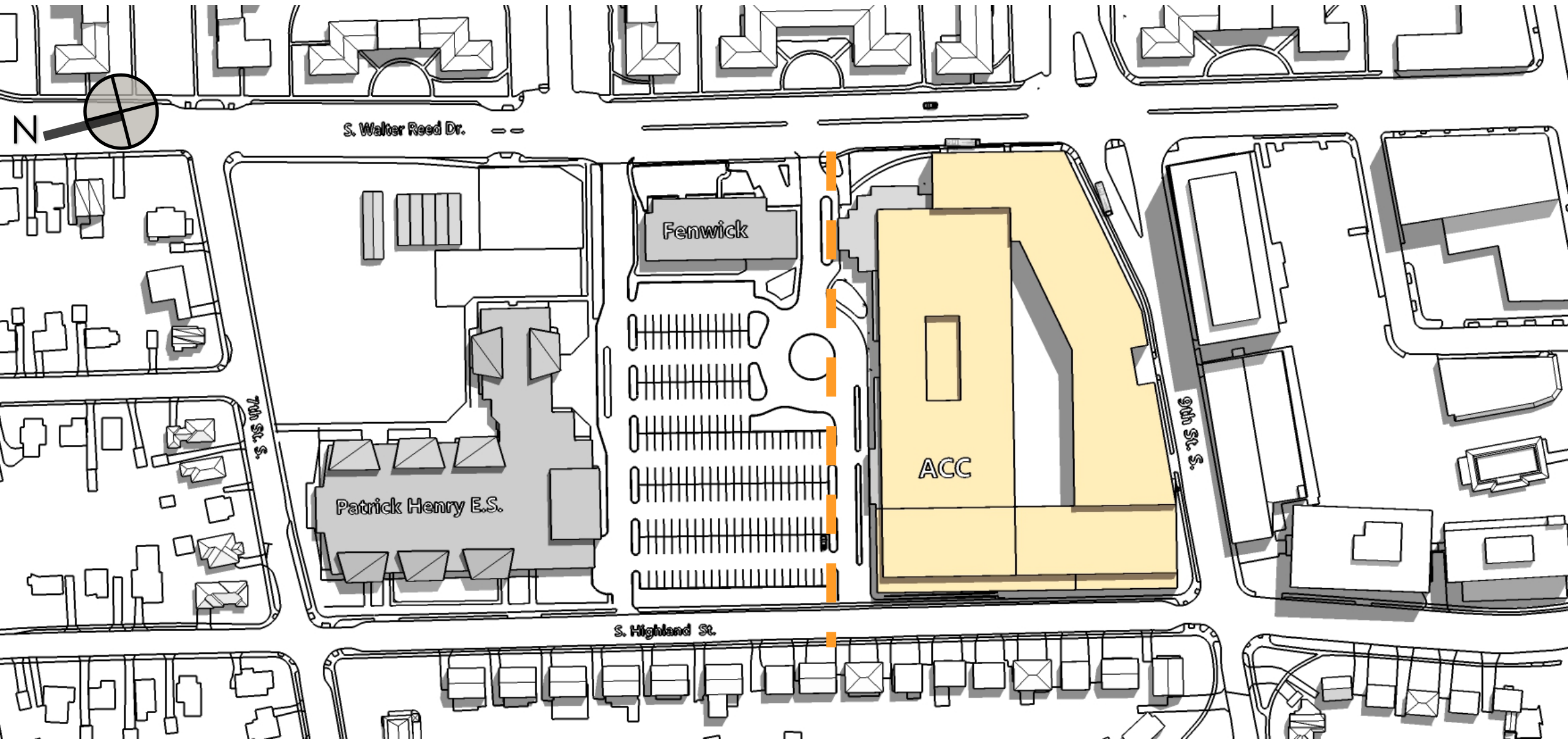
2022-23 School Year: Add 800 HS seats



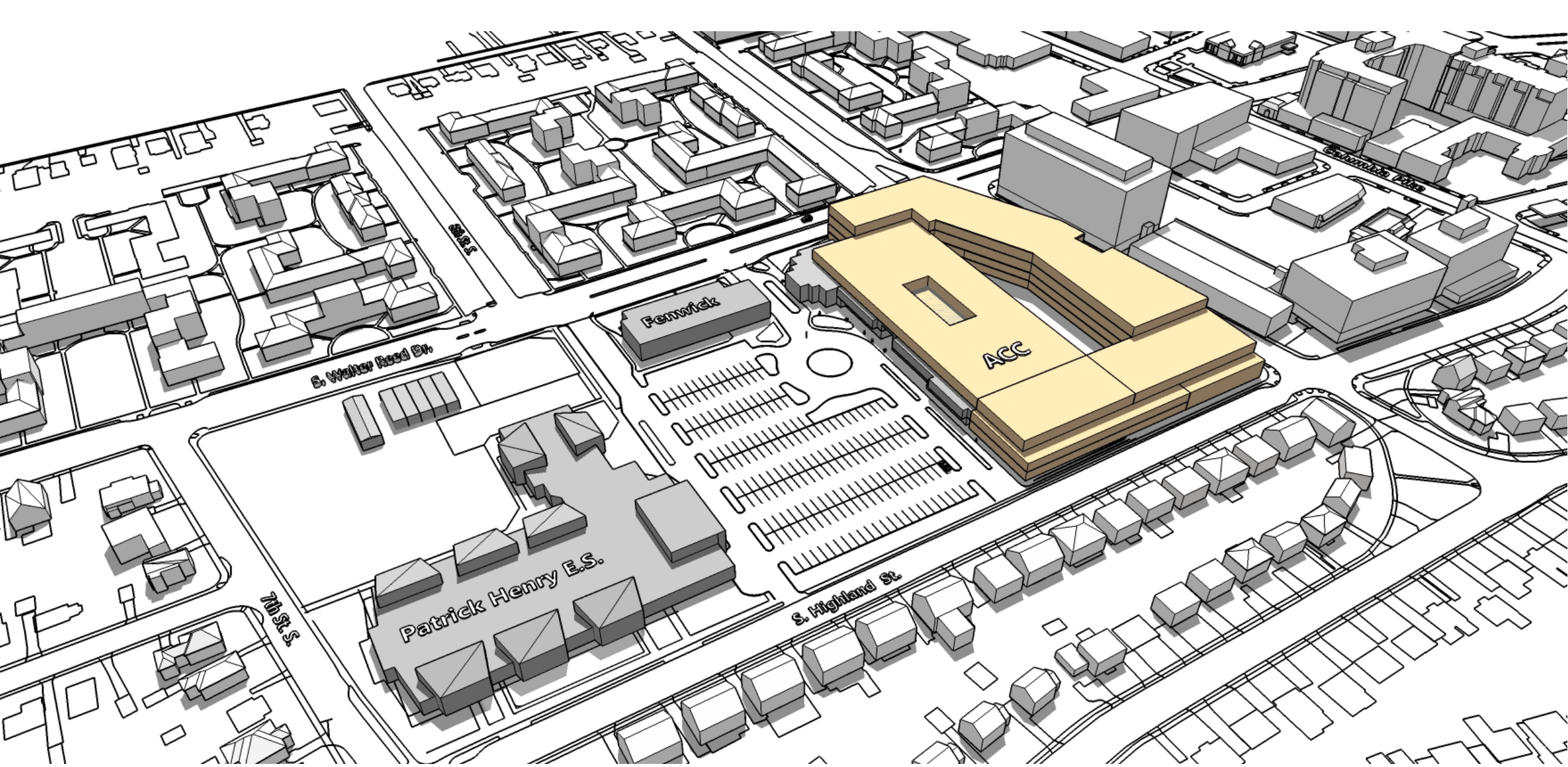
2022-23 School Year: Add 800 HS seats



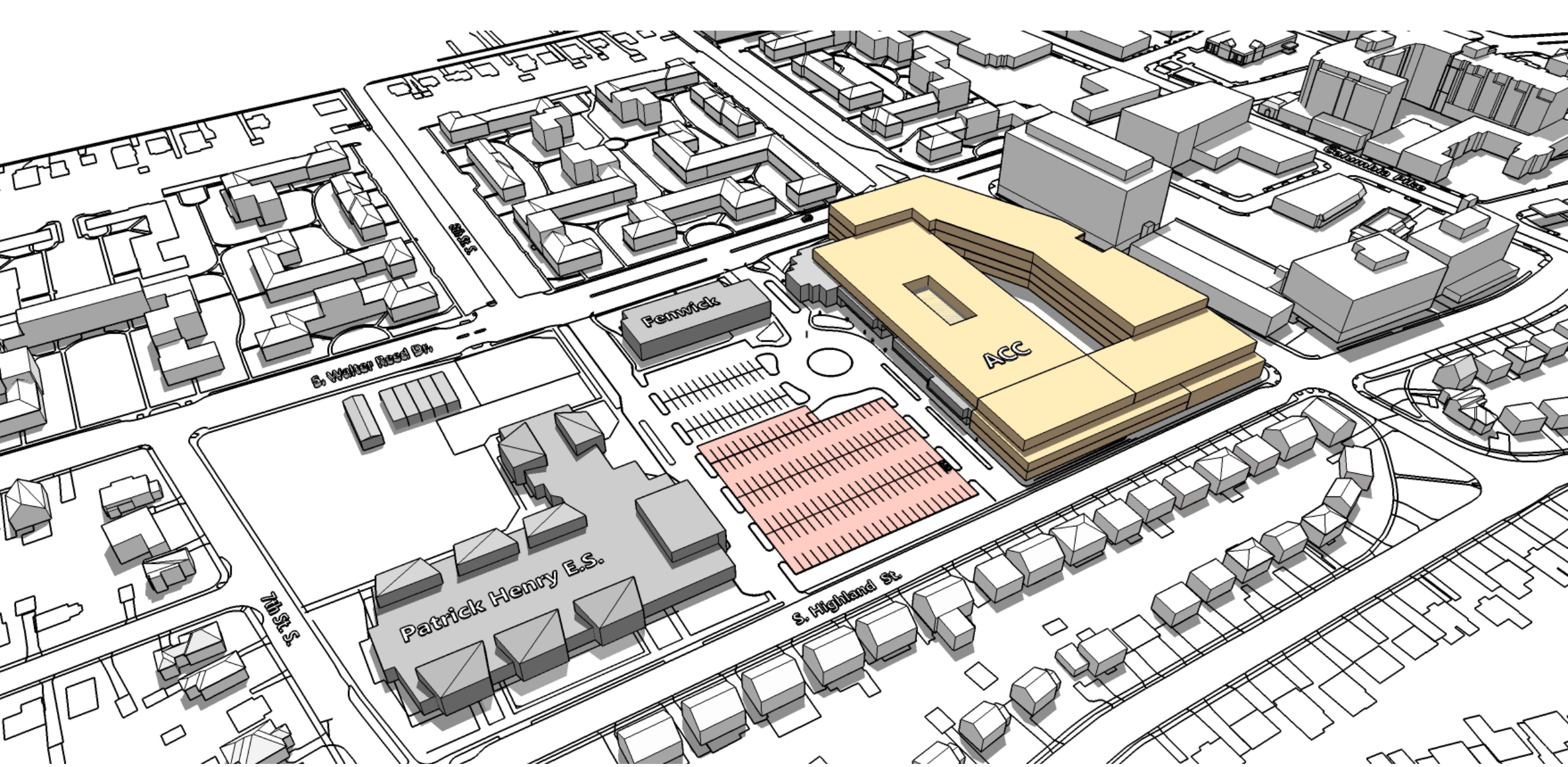
2022-23 School Year: Add 800 HS seats



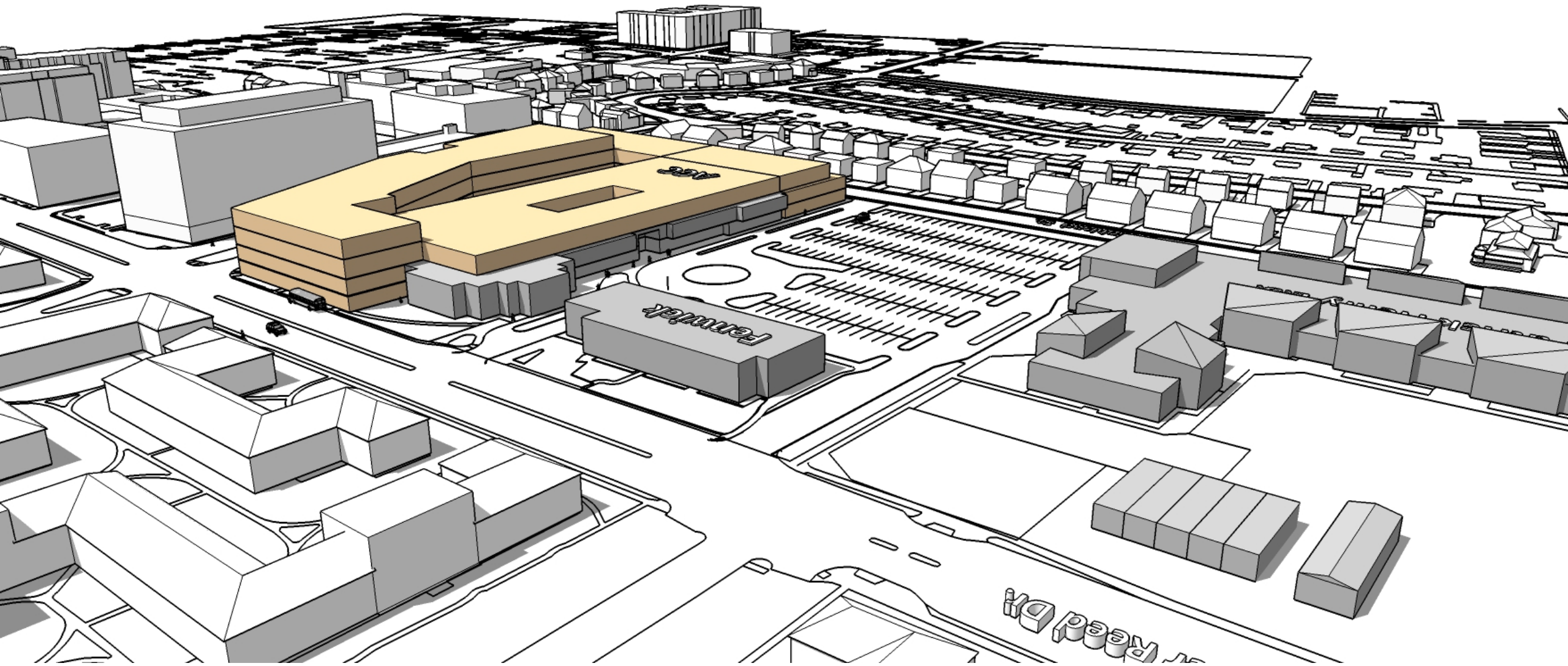
Option 1: Add 1300 HS Seats



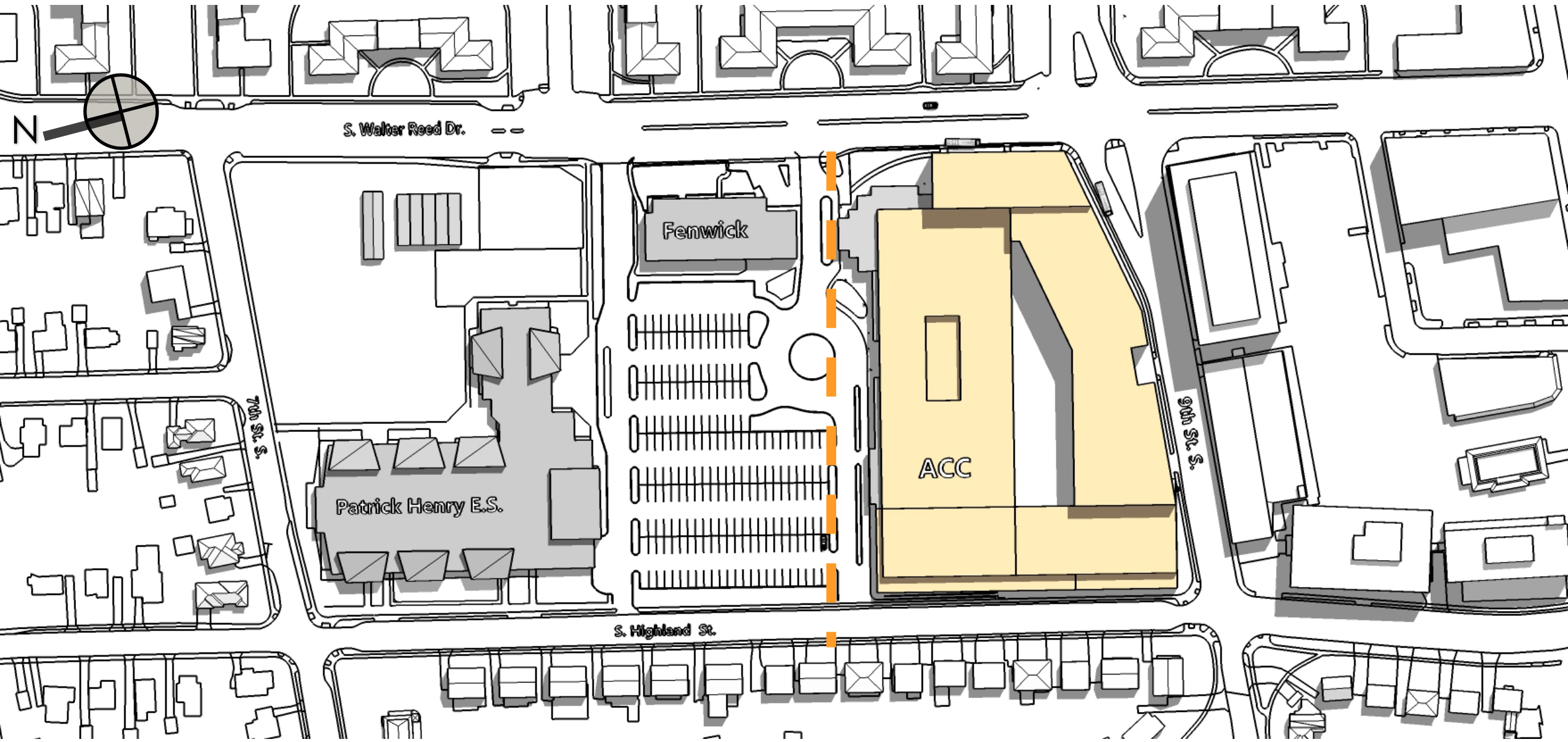
Option 1: Add 1300 HS Seats



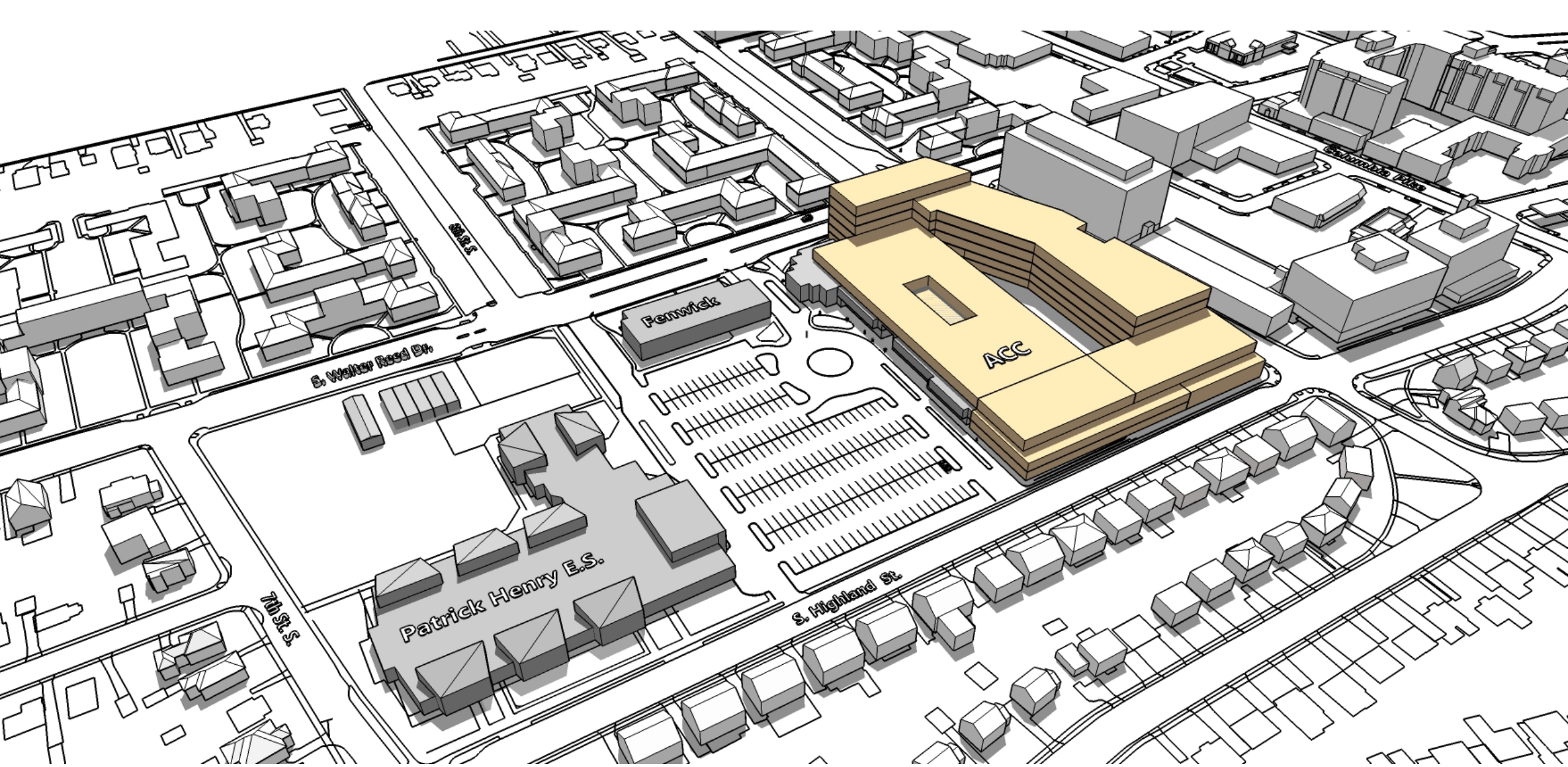
Option 1: Add 1300 HS Seats



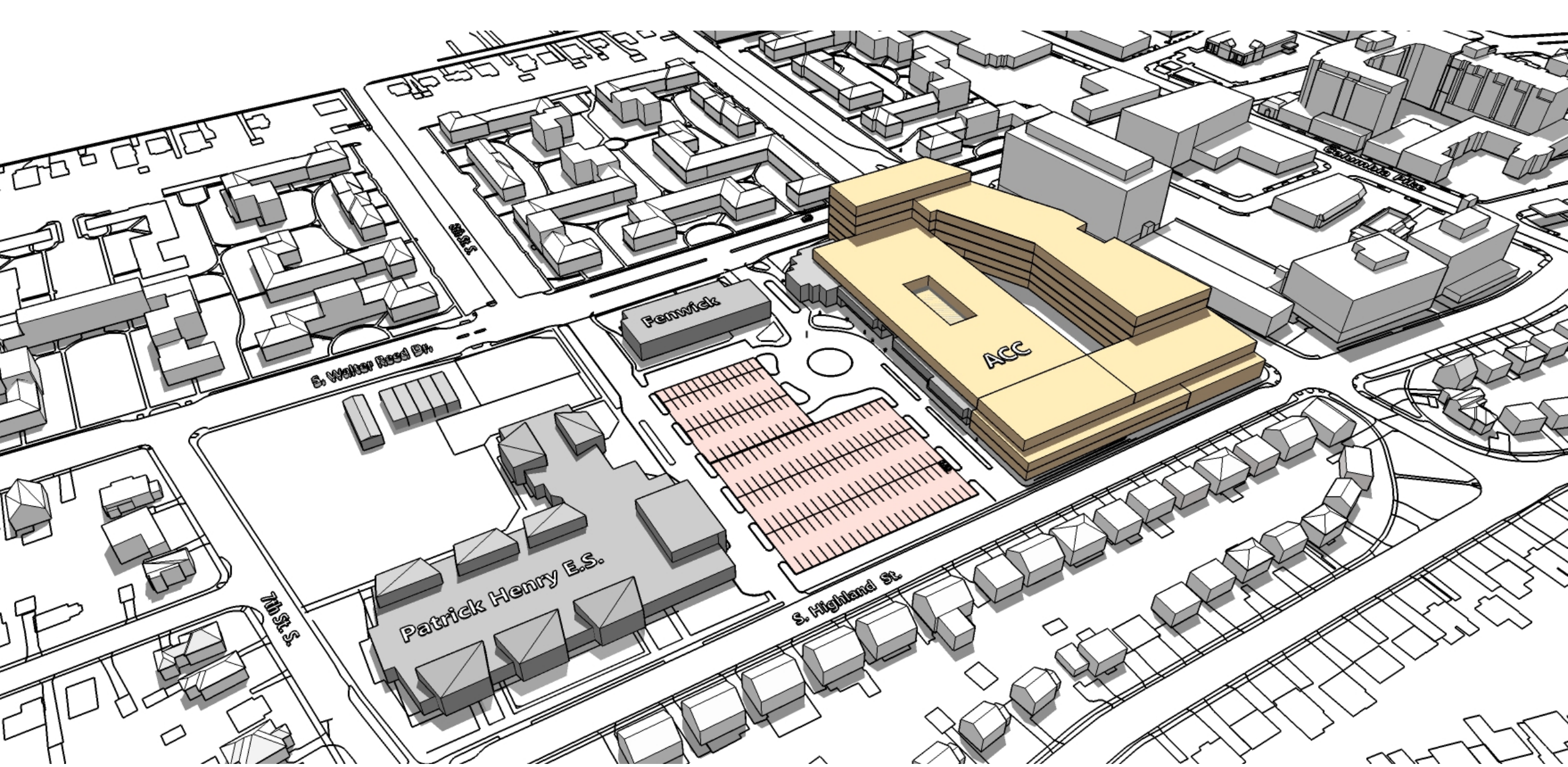
Option 1: Add 1300 HS Seats



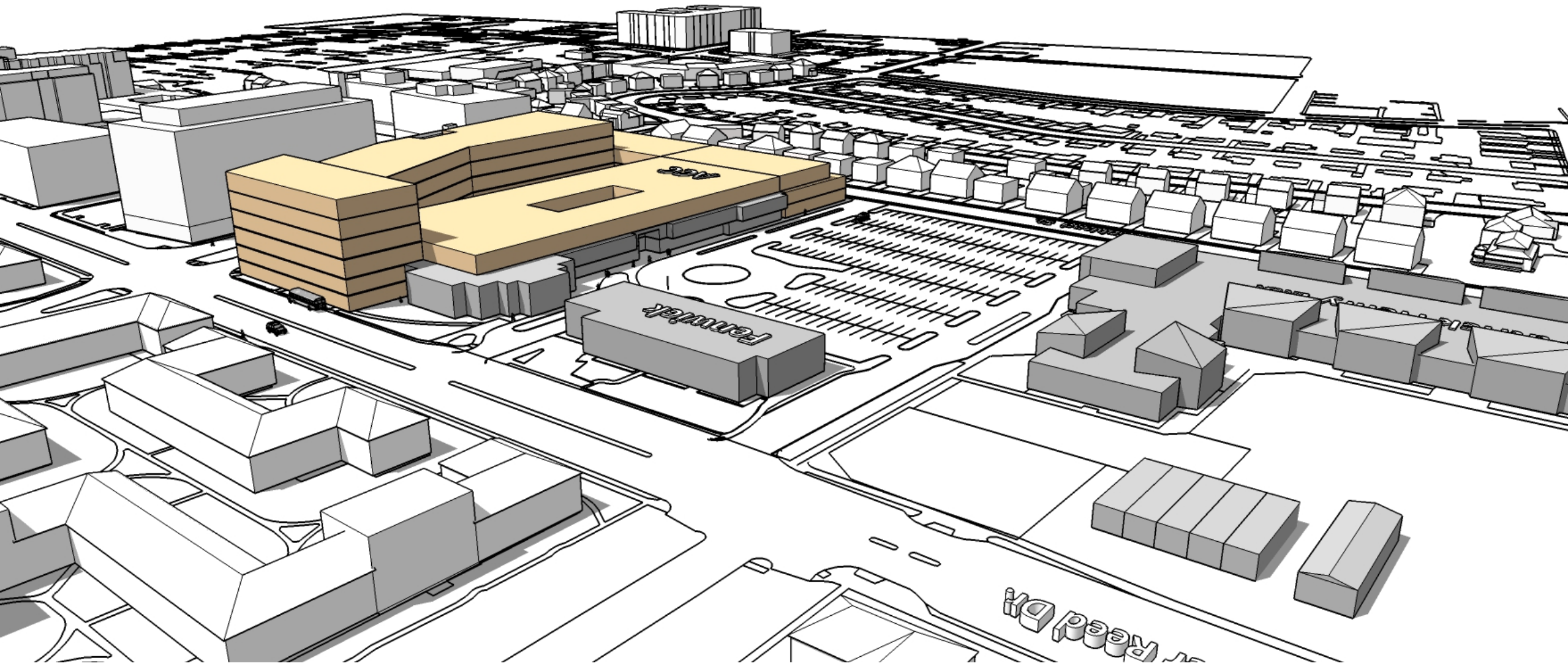
Option 2: Add 2300 HS Seats



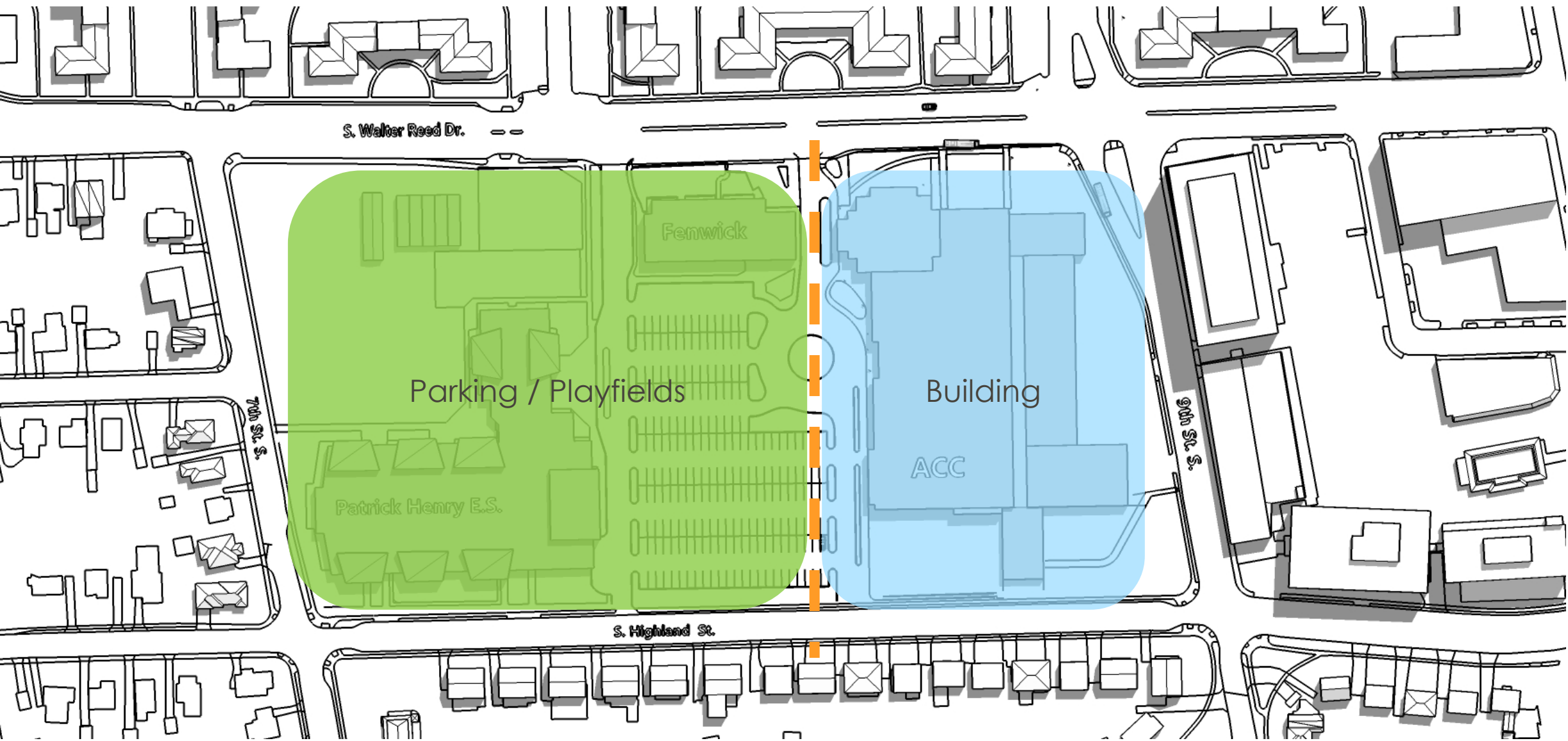
Option 2: Add 2300 HS Seats



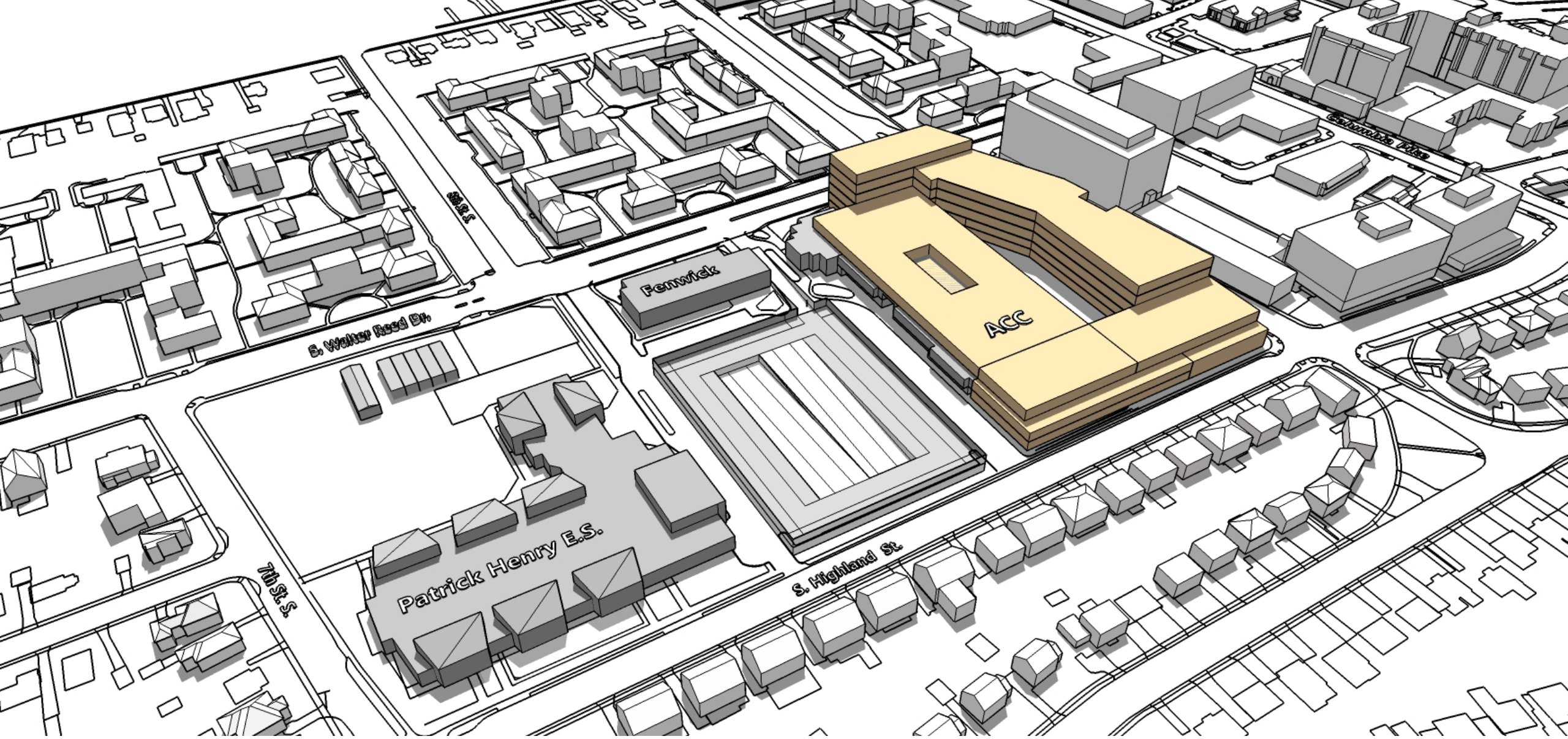
Option 2: Add 2300 HS Seats



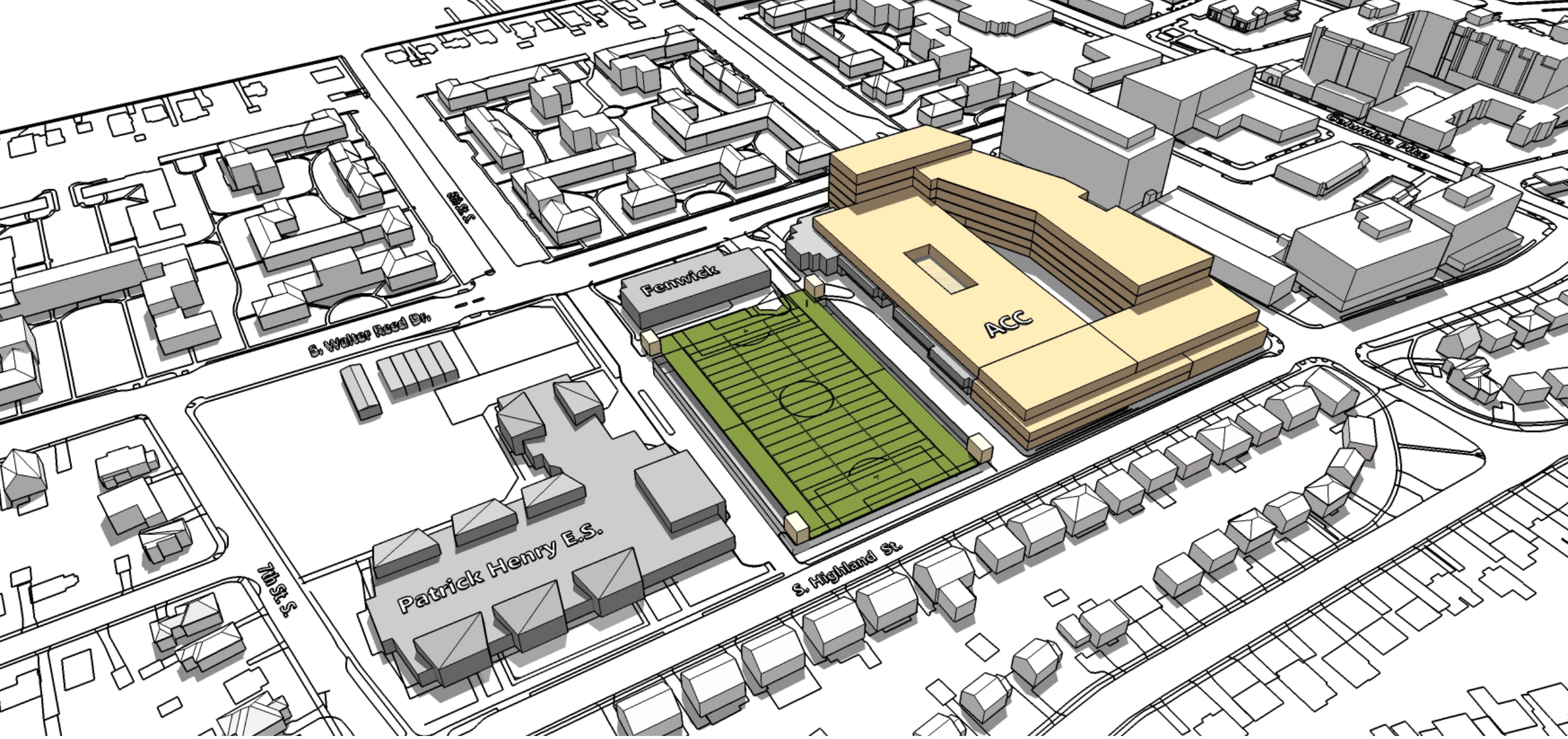
Option 2: Add 2300 HS Seats



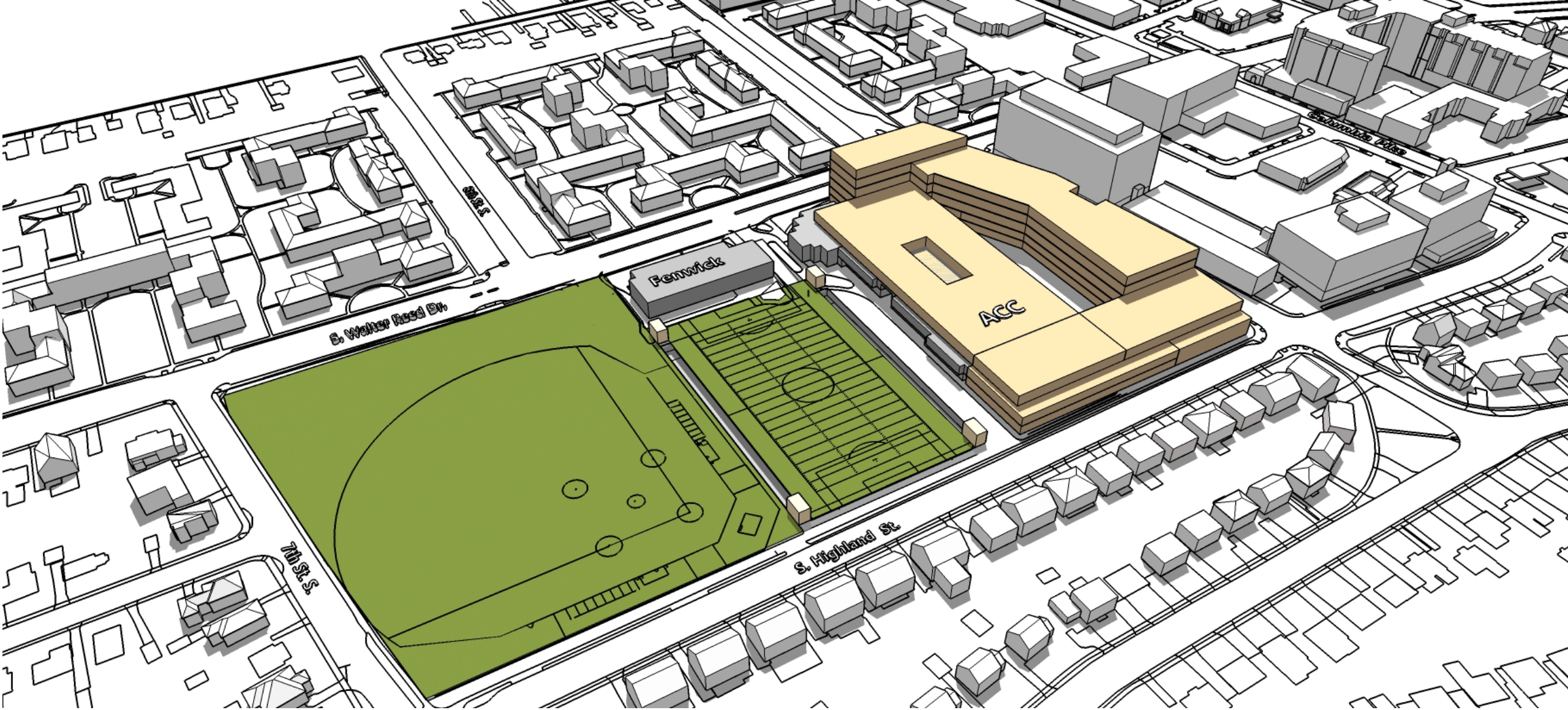
Site Optimization Diagram



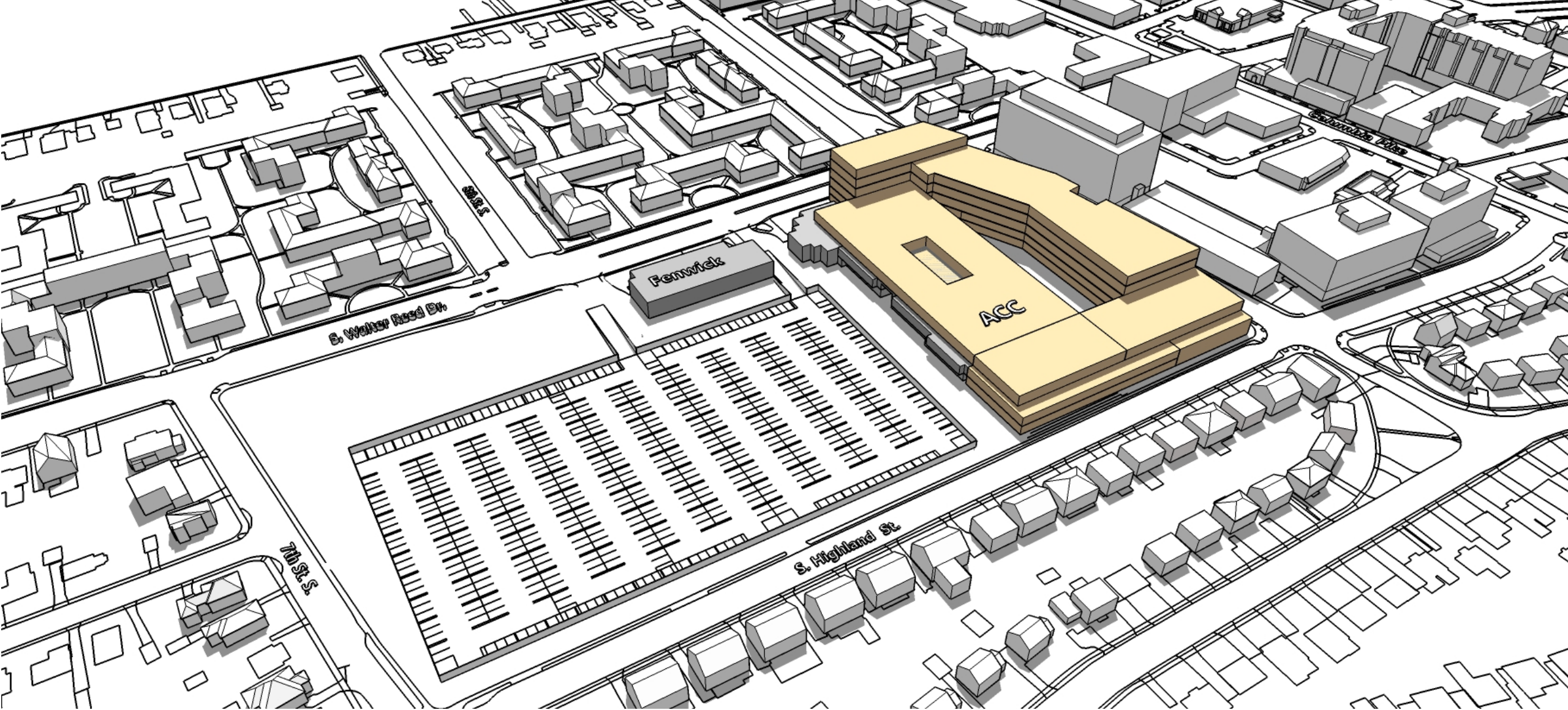
Option 2: Add 2300 HS Seats



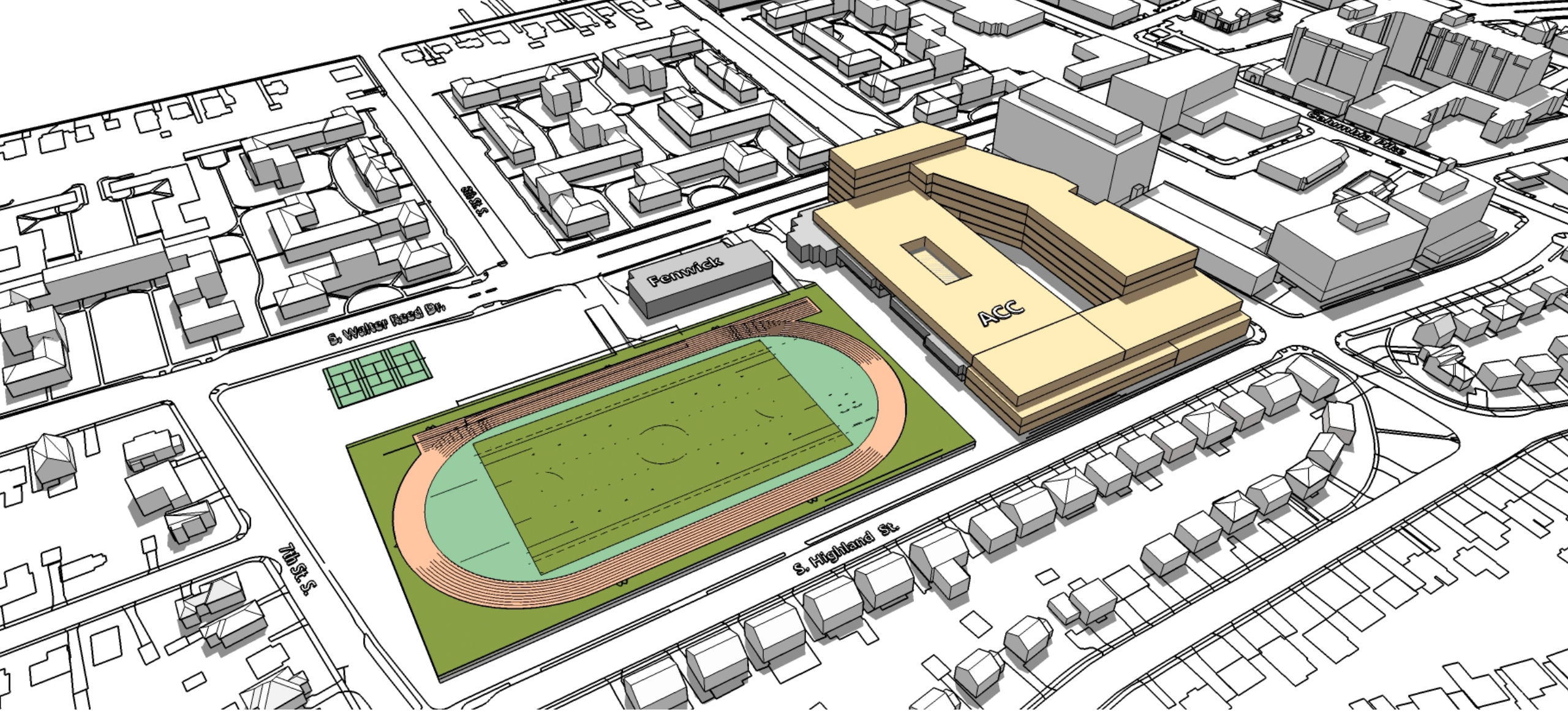
Option 2: Add 2300 HS Seats



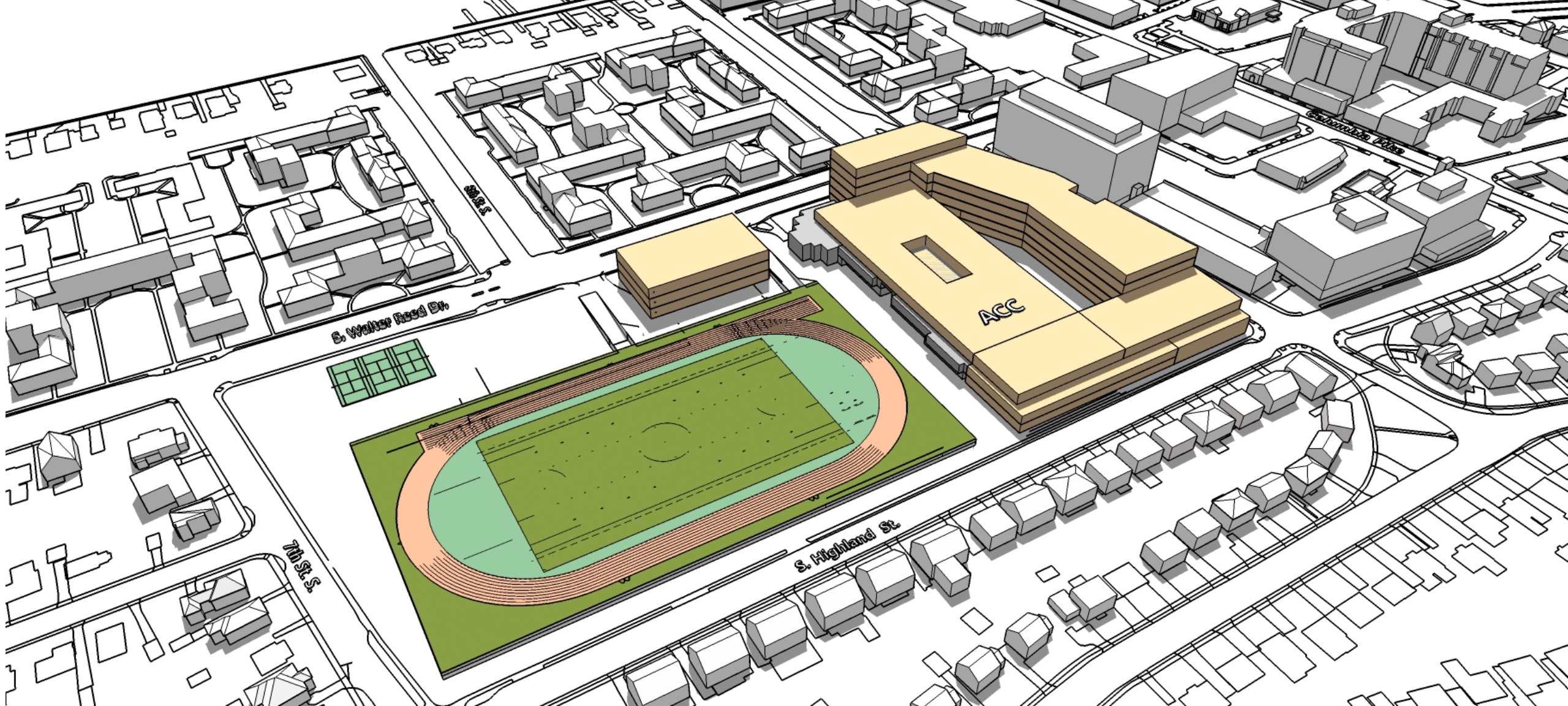
Option 2: Add 2300 HS Seats



Option 2: Add 2300 HS Seats



Option 2: Add 2300 HS Seats



Option 2: Add 2300 HS Seats