

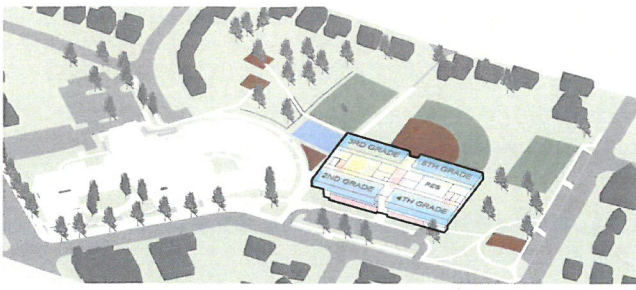
**KRISTY PETERKIN**  
**SCHEME RANKING**  
 APS: New Elementary School at Reed

**PFRC**  
 Member

Rank from 1 (Favorite)  
 to 6 (Least Favorite)

**SCHEME**

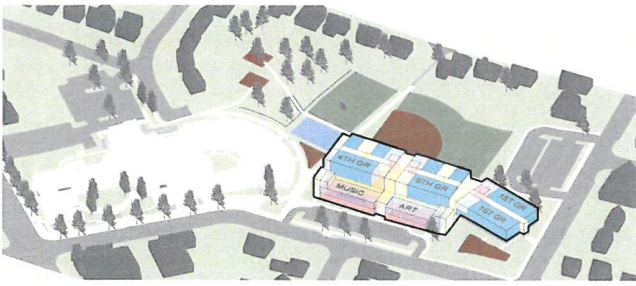
**RANK**



**Upper Lower Scheme**

Cost Compared to Budget: **-\$3 to -1M**  
 Total Student Capacity: **732+ Students**  
 Cost per Seat: **\$63-66,000**  
 Increased Impervious Area: **+37,300 SF**  
 Required Parking (Zoning): **150-165 Spaces**

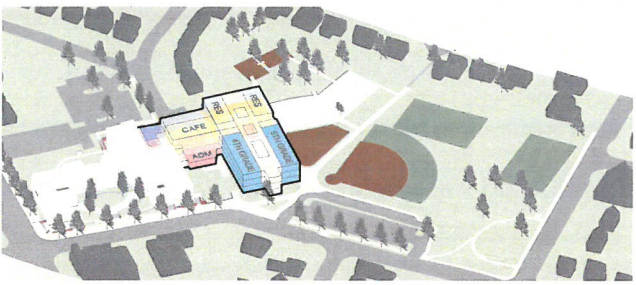
2



**Standalone Scheme**

Cost Compared to Budget: **+\$1 to +3M**  
 Total Student Capacity: **1,003 Students**  
 Cost per Seat: **\$50-52,000**  
 Increased Impervious Area: **+62,700 SF**  
 Required Parking (Zoning): **204 Spaces**

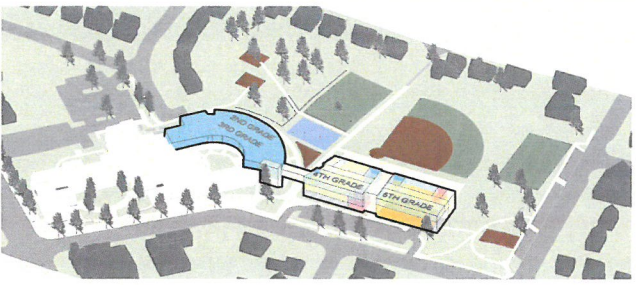
5



**Integrated Scheme**

Cost Compared to Budget: **-\$1 to +1M**  
 Total Student Capacity: **732 Students**  
 Cost per Seat: **\$66-68,000**  
 Increased Impervious Area: **+16,800 SF**  
 Required Parking (Zoning): **150 Spaces**

1



**Bridge Scheme**

Cost Compared to Budget: **-\$1.5 to +0.5M**  
 Total Student Capacity: **732 Students**  
 Cost per Seat: **\$65-67,000**  
 Increased Impervious Area: **+37,300 SF**  
 Required Parking (Zoning): **150 Spaces**

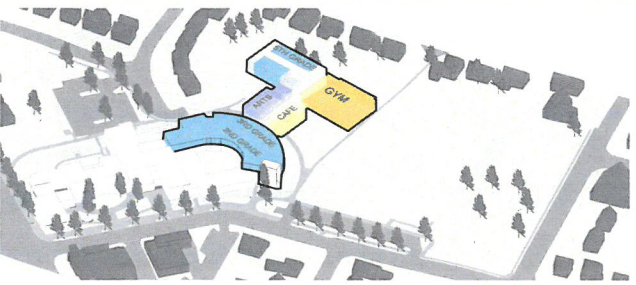
3



**East Scheme**

Cost Compared to Budget: **-\$7 to -5M**  
 Total Student Capacity: **732 Students**  
 Cost per Seat: **\$58-60,000**  
 Increased Impervious Area: **+47,800 SF**  
 Required Parking (Zoning): **150 Spaces**

6



**North Scheme**

Cost Compared to Budget: **-\$0.5 to +1.5M**  
 Total Student Capacity: **732 Students**  
 Cost per Seat: **\$66-68,000**  
 Increased Impervious Area: **+37,300 SF**  
 Required Parking (Zoning): **150 Spaces**

4



# SCHEME RANKING

APS: New Elementary School at Reed

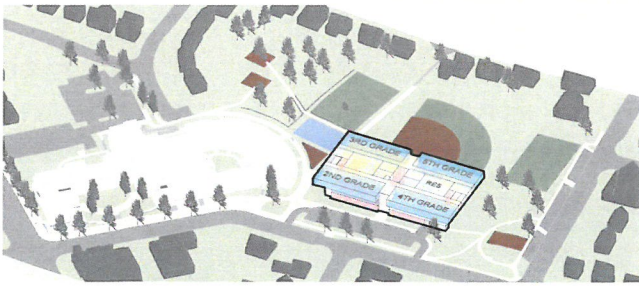
TERRI PRELL  
Rank from 1 (Favorite)  
to 6 (Least Favorite)

## PFRC

Member

### SCHEME

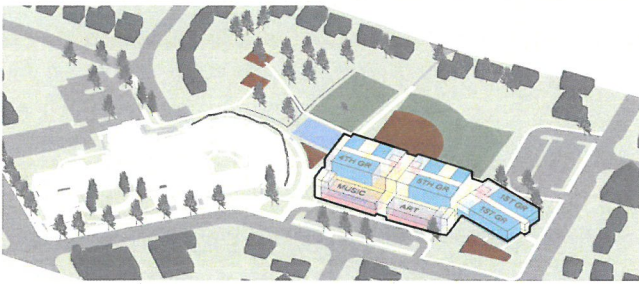
### RANK



#### Upper Lower Scheme

Cost Compared to Budget: **-\$3 to -1M**  
 Total Student Capacity: **732+ Students**  
 Cost per Seat: **\$63-66,000**  
 Increased Impervious Area: **+37,300 SF**  
 Required Parking (Zoning): **150-165 Spaces**

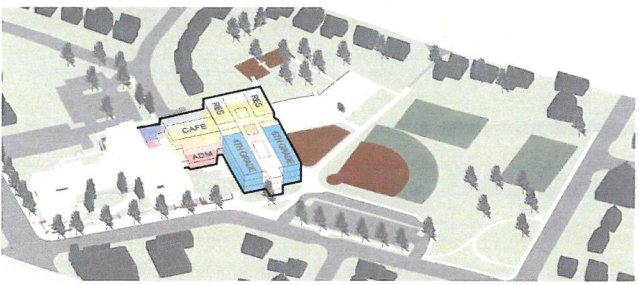
2



#### Standalone Scheme

Cost Compared to Budget: **+\$1 to +3M**  
 Total Student Capacity: **1,003 Students**  
 Cost per Seat: **\$50-52,000**  
 Increased Impervious Area: **+62,700 SF**  
 Required Parking (Zoning): **204 Spaces**

4

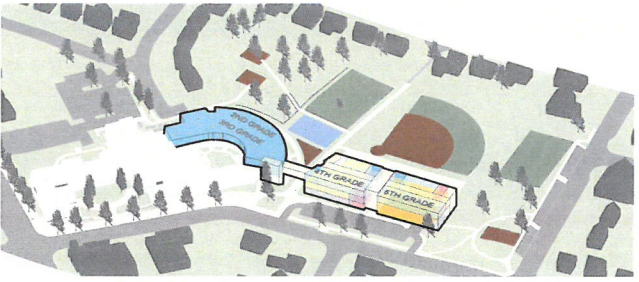


#### Integrated Scheme

Cost Compared to Budget: **-\$1 to +1M**  
 Total Student Capacity: **732 Students**  
 Cost per Seat: **\$66-68,000**  
 Increased Impervious Area: **+16,800 SF**  
 Required Parking (Zoning): **150 Spaces**

1

3 or 4 stories



#### Bridge Scheme

Cost Compared to Budget: **-\$1.5 to +0.5M**  
 Total Student Capacity: **732 Students**  
 Cost per Seat: **\$65-67,000**  
 Increased Impervious Area: **+37,300 SF**  
 Required Parking (Zoning): **150 Spaces**

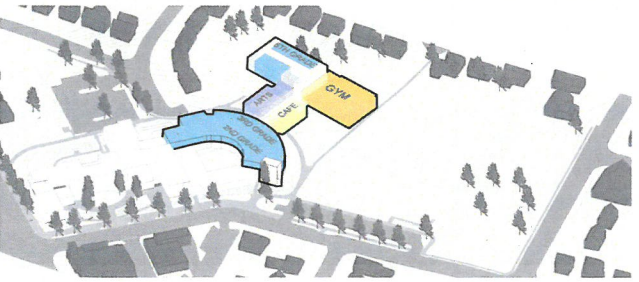
3



#### East Scheme

Cost Compared to Budget: **-\$7 to -5M**  
 Total Student Capacity: **732 Students**  
 Cost per Seat: **\$58-60,000**  
 Increased Impervious Area: **+47,800 SF**  
 Required Parking (Zoning): **150 Spaces**

5



#### North Scheme

Cost Compared to Budget: **-\$0.5 to +1.5M**  
 Total Student Capacity: **732 Students**  
 Cost per Seat: **\$66-68,000**  
 Increased Impervious Area: **+37,300 SF**  
 Required Parking (Zoning): **150 Spaces**

6

1. Integrated moves buildings & mass toward the street businesses leaving more open space toward the residential areas.

stand alone takes up the county land corner

NORTH SCHEME - fire access will take down too many trees.

2. UPPER LOWER - ONE OF BEST EDUCATIONALLY - lowest transition time allows for better use of county "park" land Allows one program to stay in this building & would not require APS to find a new space

FERRINASH

# SCHEME RANKING

APS: New Elementary School at Reed

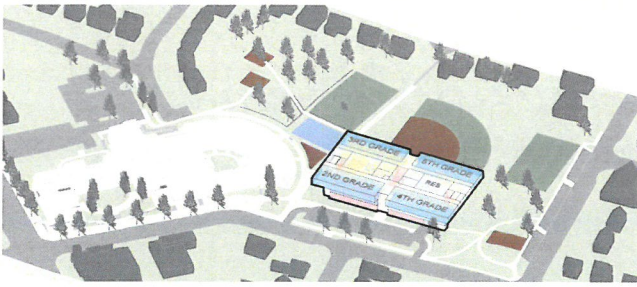
## PFRC

Member

Rank from 1 (Favorite) to 6 (Least Favorite)

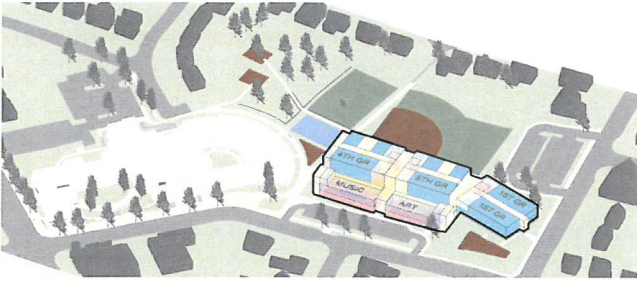
### SCHEME

### RANK



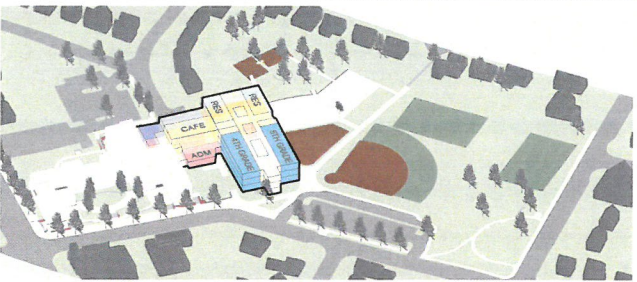
#### Upper Lower Scheme

Cost Compared to Budget: **-\$3 to -1M**  
 Total Student Capacity: **732+ Students**  
 Cost per Seat: **\$63-66,000**  
 Increased Impervious Area: **+37,300 SF**  
 Required Parking (Zoning): **150-165 Spaces**



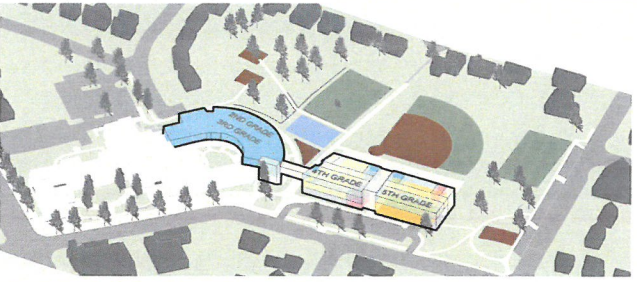
#### Standalone Scheme

Cost Compared to Budget: **+\$1 to +3M**  
 Total Student Capacity: **1,003 Students**  
 Cost per Seat: **\$50-52,000**  
 Increased Impervious Area: **+62,700 SF**  
 Required Parking (Zoning): **204 Spaces**



#### Integrated Scheme

Cost Compared to Budget: **-\$1 to +1M**  
 Total Student Capacity: **732 Students**  
 Cost per Seat: **\$66-68,000**  
 Increased Impervious Area: **+16,800 SF**  
 Required Parking (Zoning): **150 Spaces**



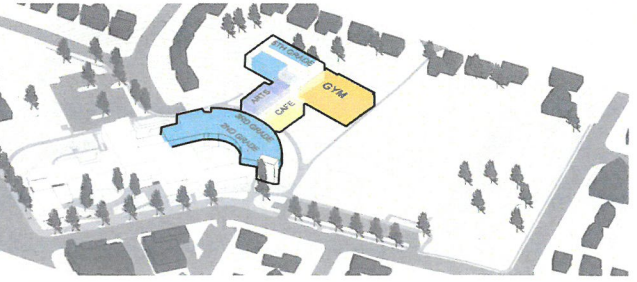
#### Bridge Scheme

Cost Compared to Budget: **-\$1.5 to +0.5M**  
 Total Student Capacity: **732 Students**  
 Cost per Seat: **\$65-67,000**  
 Increased Impervious Area: **+37,300 SF**  
 Required Parking (Zoning): **150 Spaces**



#### East Scheme

Cost Compared to Budget: **-\$7 to -5M**  
 Total Student Capacity: **732 Students**  
 Cost per Seat: **\$58-60,000**  
 Increased Impervious Area: **+47,800 SF**  
 Required Parking (Zoning): **150 Spaces**



#### North Scheme

Cost Compared to Budget: **-\$0.5 to +1.5M**  
 Total Student Capacity: **732 Students**  
 Cost per Seat: **\$66-68,000**  
 Increased Impervious Area: **+37,300 SF**  
 Required Parking (Zoning): **150 Spaces**



Integrated because

- builds up - 4 stories is key
- prevents half-baked heavy-up decision
- compact, preserves much of open space

Standard because

- Lowest cost per seat
- Builds up
- Preserves investment in existing building

# SCHEME RANKING

APS: New Elementary School at Reed

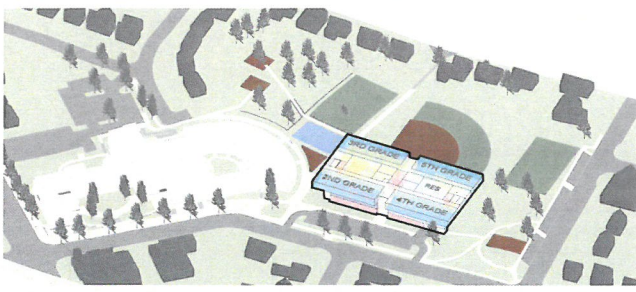
## PFRC

Member

Rank from 1 (Favorite) to 6 (Least Favorite)

### SCHEME

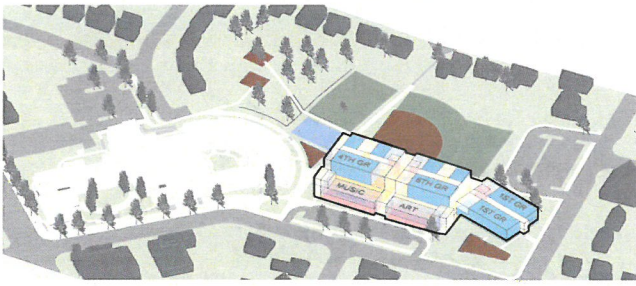
### RANK



#### Upper Lower Scheme

Cost Compared to Budget: **-\$3 to -1M**  
 Total Student Capacity: **732+ Students**  
 Cost per Seat: **\$63-66,000**  
 Increased Impervious Area: **+37,300 SF**  
 Required Parking (Zoning): **150-165 Spaces**

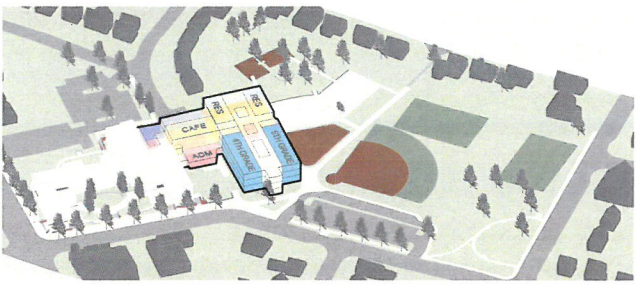
4



#### \* Standalone Scheme

Cost Compared to Budget: **+\$1 to +3M**  
 Total Student Capacity: **1,003 Students**  
 Cost per Seat: **\$50-52,000**  
 Increased Impervious Area: **+62,700 SF**  
 Required Parking (Zoning): **204 Spaces**

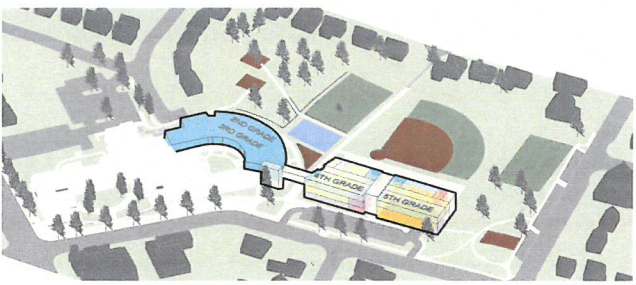
5



#### Integrated Scheme

Cost Compared to Budget: **-\$1 to +1M**  
 Total Student Capacity: **732 Students**  
 Cost per Seat: **\$66-68,000**  
 Increased Impervious Area: **+16,800 SF**  
 Required Parking (Zoning): **150 Spaces**

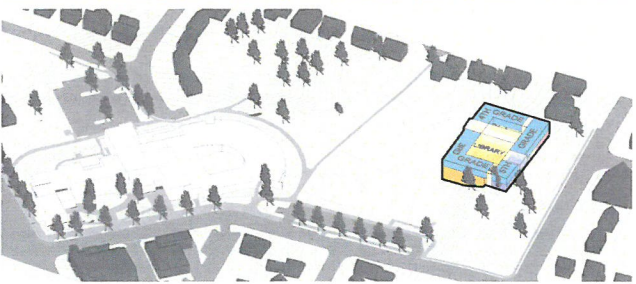
1



#### Bridge Scheme

Cost Compared to Budget: **-\$1.5 to +0.5M**  
 Total Student Capacity: **732 Students**  
 Cost per Seat: **\$65-67,000**  
 Increased Impervious Area: **+37,300 SF**  
 Required Parking (Zoning): **150 Spaces**

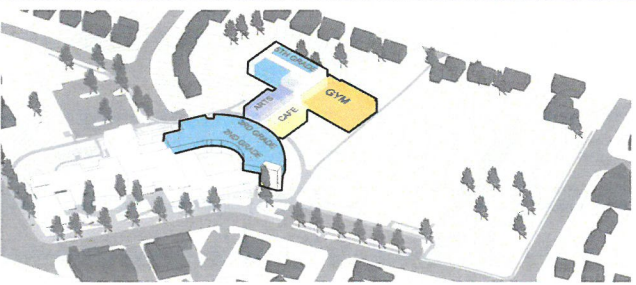
2



#### \* East Scheme

Cost Compared to Budget: **-\$7 to -5M**  
 Total Student Capacity: **732 Students**  
 Cost per Seat: **\$58-60,000**  
 Increased Impervious Area: **+47,800 SF**  
 Required Parking (Zoning): **150 Spaces**

6



#### North Scheme

Cost Compared to Budget: **-\$0.5 to +1.5M**  
 Total Student Capacity: **732 Students**  
 Cost per Seat: **\$66-68,000**  
 Increased Impervious Area: **+37,300 SF**  
 Required Parking (Zoning): **150 Spaces**

3

three of the six schemes list the same ~~number~~<sup>size of</sup>  
Increased Impervious Area. That is  
not credible!



# SCHEME RANKING

APS: New Elementary School at Reed

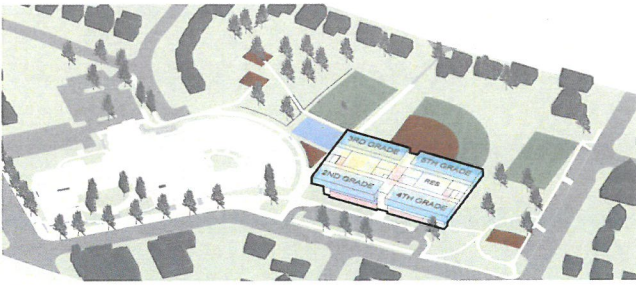
## PFRC

Member

Rank from 1 (Favorite) to 6 (Least Favorite)

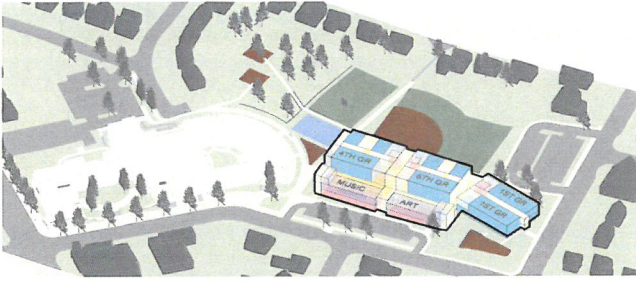
### SCHEME

### RANK



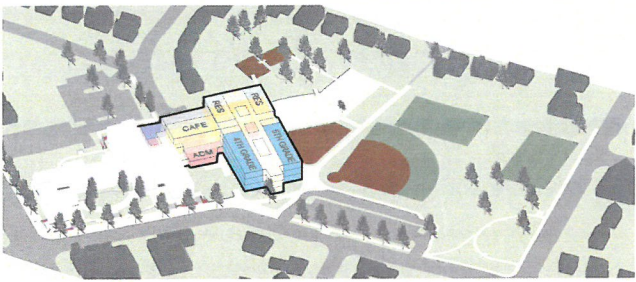
#### Upper Lower Scheme

Cost Compared to Budget: **-\$3 to -1M**  
 Total Student Capacity: **732+ Students**  
 Cost per Seat: **\$63-66,000**  
 Increased Impervious Area: **+37,300 SF**  
 Required Parking (Zoning): **150-165 Spaces**



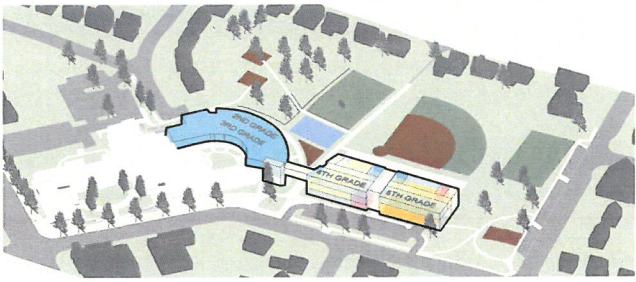
#### Standalone Scheme

Cost Compared to Budget: **+\$1 to +3M**  
 Total Student Capacity: **1,003 Students**  
 Cost per Seat: **\$50-52,000**  
 Increased Impervious Area: **+62,700 SF**  
 Required Parking (Zoning): **204 Spaces**



#### Integrated Scheme

Cost Compared to Budget: **-\$1 to +1M**  
 Total Student Capacity: **732 Students**  
 Cost per Seat: **\$66-68,000**  
 Increased Impervious Area: **+16,800 SF**  
 Required Parking (Zoning): **150 Spaces**



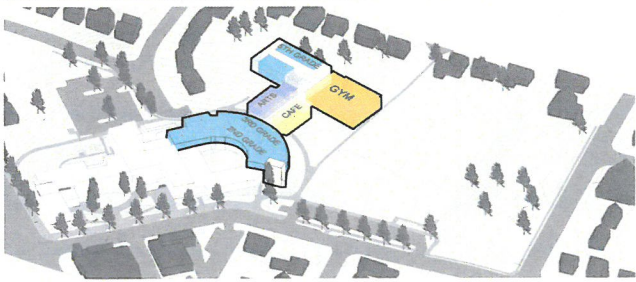
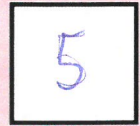
#### Bridge Scheme

Cost Compared to Budget: **-\$1.5 to +0.5M**  
 Total Student Capacity: **732 Students**  
 Cost per Seat: **\$65-67,000**  
 Increased Impervious Area: **+37,300 SF**  
 Required Parking (Zoning): **150 Spaces**



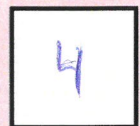
#### East Scheme

Cost Compared to Budget: **-\$7 to -5M**  
 Total Student Capacity: **732 Students**  
 Cost per Seat: **\$58-60,000**  
 Increased Impervious Area: **+47,800 SF**  
 Required Parking (Zoning): **150 Spaces**



#### North Scheme

Cost Compared to Budget: **-\$0.5 to +1.5M**  
 Total Student Capacity: **732 Students**  
 Cost per Seat: **\$66-68,000**  
 Increased Impervious Area: **+37,300 SF**  
 Required Parking (Zoning): **150 Spaces**



Still really bothered by the switch to 6 displayed options. This is contrary to the understanding and expectations that the Reed group has been working under. The process needs to be flexible, but we need to focus on fewer options. Also, it gives one suspicion about how decisions are made and where this one came from. Did it come from just a few people, or staff?

Also, it still bothers me that the 1,000 seat option is there. That's not what the group was told to consider. It makes the lowest cost seat argument invalid. Apples to Oranges

This a violation of the spirit of the Reed School change.

Integrated more closely follows the Civic Design principles of PFRC. Its Much more efficient from an educational, & energy savings, <sup>benefit</sup>

Stephan

# SCHEME RANKING

APS: New Elementary School at Reed

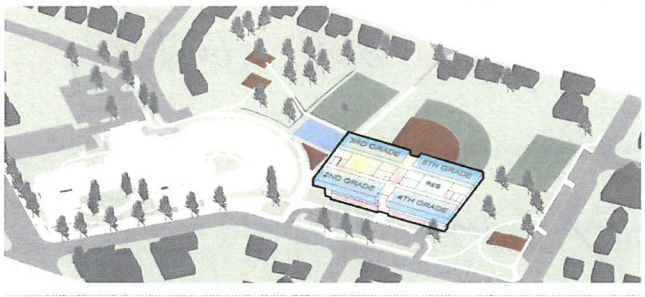
## PFRC

Member

Rank from 1 (Favorite) to 6 (Least Favorite)

### SCHEME

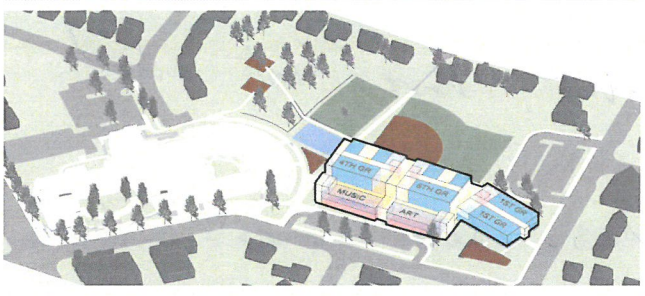
### RANK



#### Upper Lower Scheme

Cost Compared to Budget: **-\$3 to -1M**  
 Total Student Capacity: **732+ Students**  
 Cost per Seat: **\$63-66,000**  
 Increased Impervious Area: ~~+97,300 SF~~  
 Required Parking (Zoning): **150-165 Spaces**

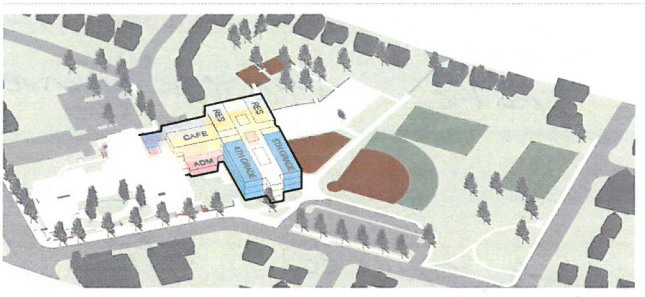
2



#### Standalone Scheme

Cost Compared to Budget: **+\$1 to +3M**  
 Total Student Capacity: **1,003 Students**  
 Cost per Seat: **\$50-52,000**  
 Increased Impervious Area: **+62,700 SF**  
 Required Parking (Zoning): **204 Spaces**

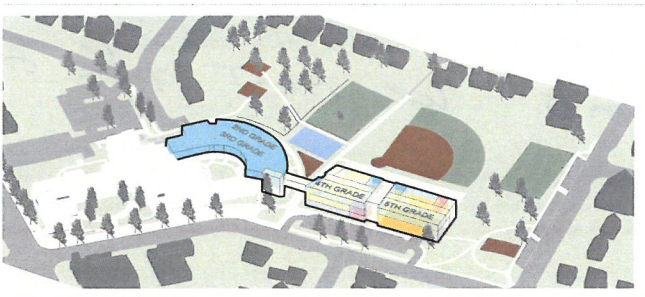
1



#### Integrated Scheme

Cost Compared to Budget: **-\$1 to +1M**  
 Total Student Capacity: **732 Students**  
 Cost per Seat: **\$66-68,000**  
 Increased Impervious Area: **+16,800 SF**  
 Required Parking (Zoning): **150 Spaces**

5



#### Bridge Scheme

Cost Compared to Budget: **-\$1.5 to +0.5M**  
 Total Student Capacity: **732 Students**  
 Cost per Seat: **\$65-67,000**  
 Increased Impervious Area: **+37,300 SF**  
 Required Parking (Zoning): **150 Spaces**

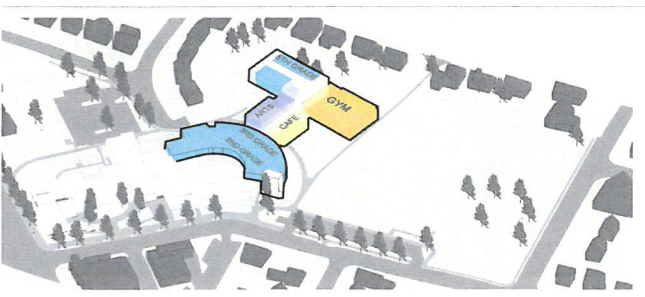
3



#### East Scheme

Cost Compared to Budget: **-\$7 to -5M**  
 Total Student Capacity: **732 Students**  
 Cost per Seat: **\$58-60,000**  
 Increased Impervious Area: **+47,800 SF**  
 Required Parking (Zoning): **150 Spaces**

4



#### North Scheme

Cost Compared to Budget: **-\$0.5 to +1.5M**  
 Total Student Capacity: **732 Students**  
 Cost per Seat: **\$66-68,000**  
 Increased Impervious Area: **+37,300 SF**  
 Required Parking (Zoning): **150 Spaces**

6

I cannot in good faith support any proposal that demolishes a 10 year old building.

When across our community we have elementary schools, even some title I, that have not had major investments in decades. We must look across our county and make strategic investments.

If we have an opportunity to get more seats for more students we must take it.

# SCHEME RANKING

APS: New Elementary School at Reed

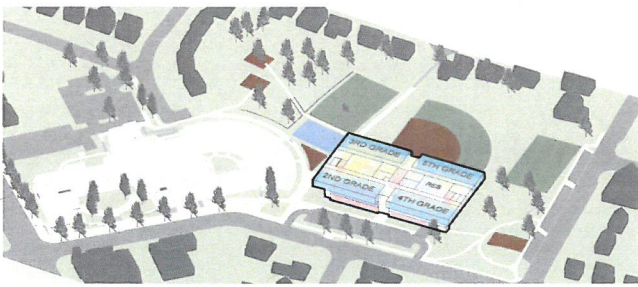
# PFRC

Member

Rank from 1 (Favorite) to 6 (Least Favorite)

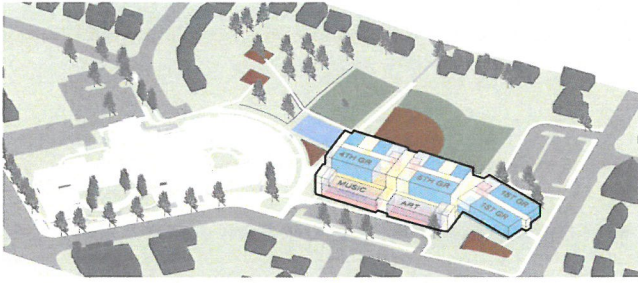
## SCHEME

## RANK



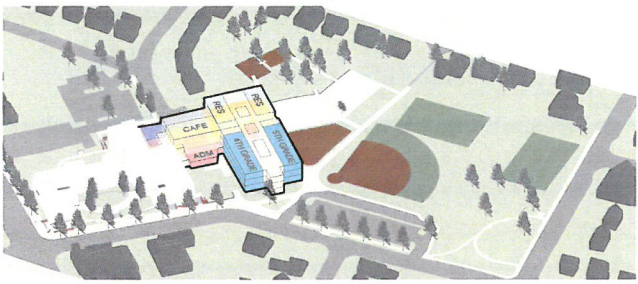
### Upper Lower Scheme

Cost Compared to Budget: **-\$3 to -1M**  
 Total Student Capacity: **732+ Students**  
 Cost per Seat: **\$63-66,000**  
 Increased Impervious Area: **+37,300 SF**  
 Required Parking (Zoning): **150-165 Spaces**



### Standalone Scheme

Cost Compared to Budget: **+\$1 to +3M**  
 Total Student Capacity: **1,003 Students**  
 Cost per Seat: **\$50-52,000**  
 Increased Impervious Area: **+62,700 SF**  
 Required Parking (Zoning): **204 Spaces**

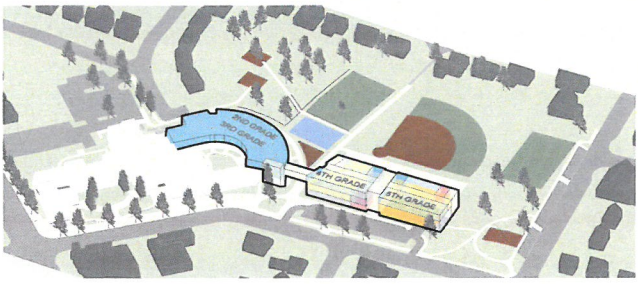


### Integrated Scheme

Cost Compared to Budget: **-\$1 to +1M**  
 Total Student Capacity: **732 Students**  
 Cost per Seat: **\$66-68,000**  
 Increased Impervious Area: **+16,800 SF**  
 Required Parking (Zoning): **150 Spaces**



*do 4 stories*



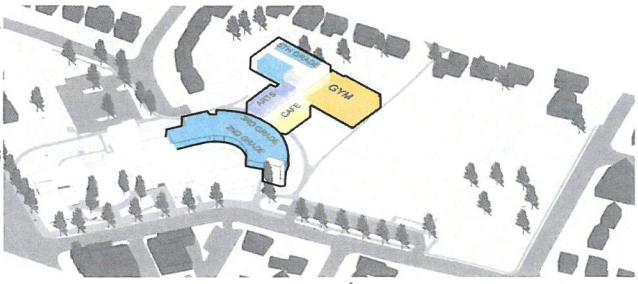
### Bridge Scheme

Cost Compared to Budget: **-\$1.5 to +0.5M**  
 Total Student Capacity: **732 Students**  
 Cost per Seat: **\$65-67,000**  
 Increased Impervious Area: **+37,300 SF**  
 Required Parking (Zoning): **150 Spaces**



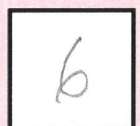
### East Scheme

Cost Compared to Budget: **-\$7 to -5M**  
 Total Student Capacity: **732 Students**  
 Cost per Seat: **\$58-60,000**  
 Increased Impervious Area: **+47,800 SF**  
 Required Parking (Zoning): **150 Spaces**



### North Scheme

Cost Compared to Budget: **-\$0.5 to +1.5M**  
 Total Student Capacity: **732 Students**  
 Cost per Seat: **\$66-68,000**  
 Increased Impervious Area: **+37,300 SF**  
 Required Parking (Zoning): **150 Spaces**



*No Five Access*

Representing VFC, we do not see why County land should be used as in the Standalone Scheme

Parking and Transportation can be arranged for any Scheme

# SCHEME RANKING

APS: New Elementary School at Reed

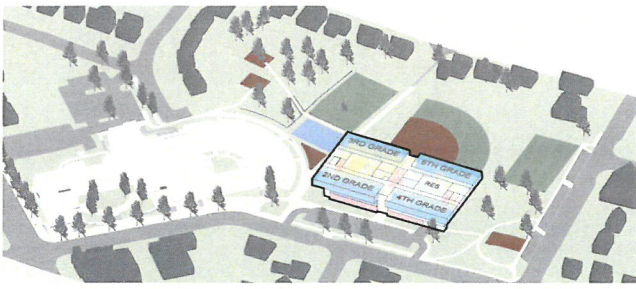
## PFRC

Member

Rank from 1 (Favorite) to 6 (Least Favorite)

### SCHEME

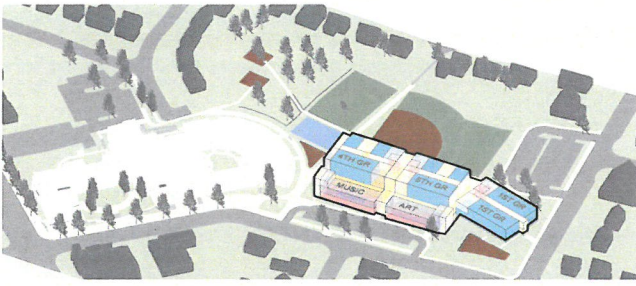
### RANK



#### Upper Lower Scheme

Cost Compared to Budget: **-\$3 to -1M**  
 Total Student Capacity: **732+ Students**  
 Cost per Seat: **\$63-66,000**  
 Increased Impervious Area: **+37,300 SF**  
 Required Parking (Zoning): **150-165 Spaces**

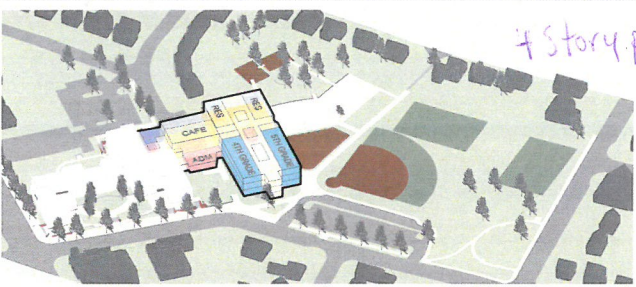
3



#### Standalone Scheme

Cost Compared to Budget: **+\$1 to +3M**  
 Total Student Capacity: **1,003 Students**  
 Cost per Seat: **\$50-52,000**  
 Increased Impervious Area: **+62,700 SF**  
 Required Parking (Zoning): **204 Spaces**

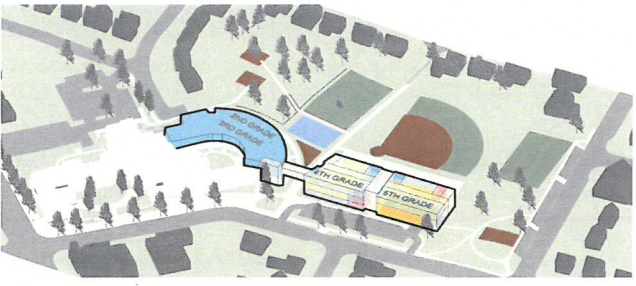
6



#### Integrated Scheme

Cost Compared to Budget: **-\$1 to +1M**  
 Total Student Capacity: **732 Students**  
 Cost per Seat: **\$66-68,000**  
 Increased Impervious Area: **+16,800 SF**  
 Required Parking (Zoning): **150 Spaces**

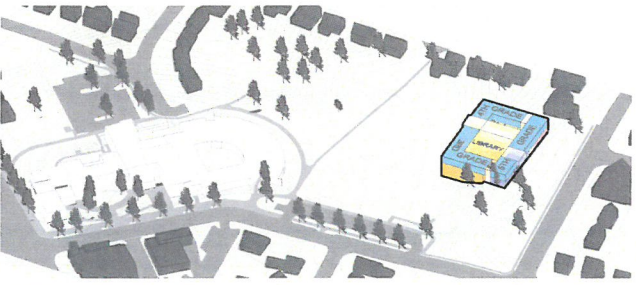
1



#### Bridge Scheme

Cost Compared to Budget: **-\$1.5 to +0.5M**  
 Total Student Capacity: **732 Students**  
 Cost per Seat: **\$65-67,000**  
 Increased Impervious Area: **+37,300 SF**  
 Required Parking (Zoning): **150 Spaces**

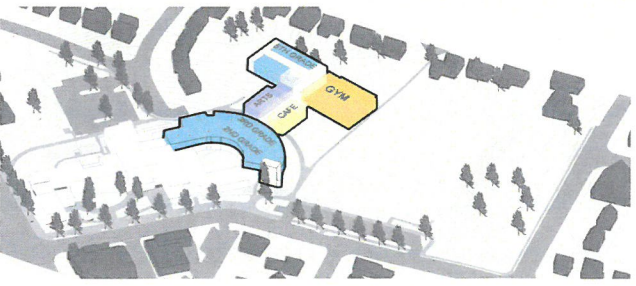
2



#### East Scheme

Cost Compared to Budget: **-\$7 to -5M**  
 Total Student Capacity: **732 Students**  
 Cost per Seat: **\$58-60,000**  
 Increased Impervious Area: **+47,800 SF**  
 Required Parking (Zoning): **150 Spaces**

5



#### North Scheme

Cost Compared to Budget: **-\$0.5 to +1.5M**  
 Total Student Capacity: **732 Students**  
 Cost per Seat: **\$66-68,000**  
 Increased Impervious Area: **+37,300 SF**  
 Required Parking (Zoning): **150 Spaces**

4

In my opinion integrated and  
bridge are much preferable to  
The other four.



# SCHEME RANKING

APS: New Elementary School at Reed

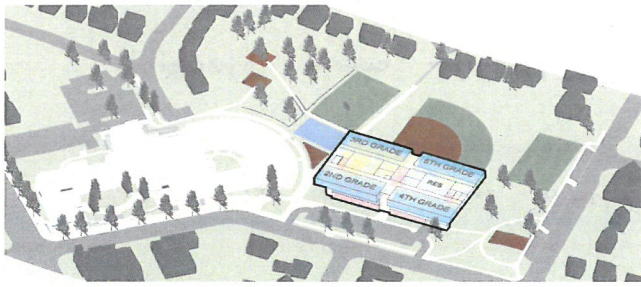
## PFRC

Member

*Jim Lantelme*  
Rank from 1 (Favorite)  
to 6 (Least Favorite)

### SCHEME

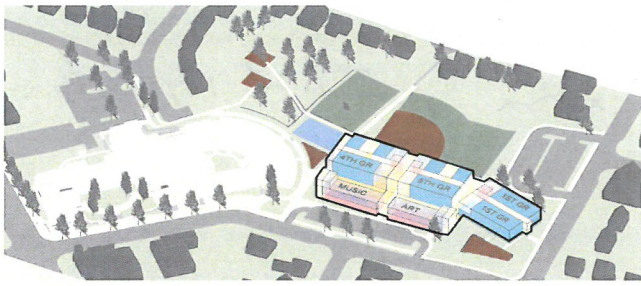
### RANK



#### Upper Lower Scheme

Cost Compared to Budget: **-\$3 to -1M**  
Total Student Capacity: **732+ Students**  
Cost per Seat: **\$63-66,000**  
Increased Impervious Area: **+37,300 SF**  
Required Parking (Zoning): **150-165 Spaces**

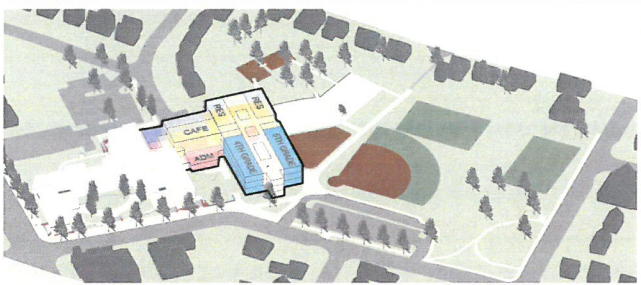
3



#### Standalone Scheme

Cost Compared to Budget: **+\$1 to +3M**  
Total Student Capacity: **1,003 Students**  
Cost per Seat: **\$50-52,000**  
Increased Impervious Area: **+62,700 SF**  
Required Parking (Zoning): **204 Spaces**

5



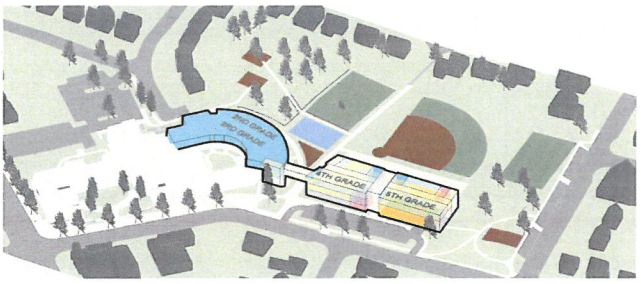
#### Integrated Scheme

*-4 stories*

*Over*

Cost Compared to Budget: **-\$1 to +1M**  
Total Student Capacity: **732 Students**  
Cost per Seat: **\$66-68,000**  
Increased Impervious Area: **+16,800 SF**  
Required Parking (Zoning): **150 Spaces**

1



#### Bridge Scheme

Cost Compared to Budget: **-\$1.5 to +0.5M**  
Total Student Capacity: **732 Students**  
Cost per Seat: **\$65-67,000**  
Increased Impervious Area: **+37,300 SF**  
Required Parking (Zoning): **150 Spaces**

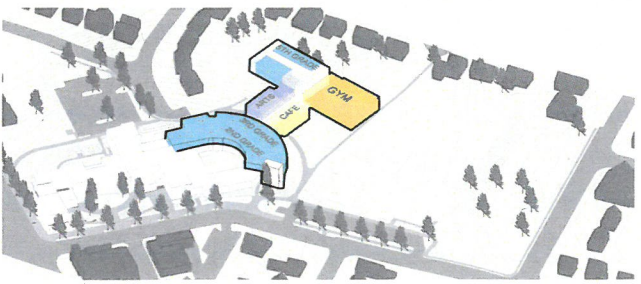
2



#### East Scheme

Cost Compared to Budget: **-\$7 to -5M**  
Total Student Capacity: **732 Students**  
Cost per Seat: **\$58-60,000**  
Increased Impervious Area: **+47,800 SF**  
Required Parking (Zoning): **150 Spaces**

4



#### North Scheme

Cost Compared to Budget: **-\$0.5 to +1.5M**  
Total Student Capacity: **732 Students**  
Cost per Seat: **\$66-68,000**  
Increased Impervious Area: **+37,300 SF**  
Required Parking (Zoning): **150 Spaces**

6

- 1) Integrated - Best for urban design as it puts density closest to Washington Blvd and its activity. Leaves open space between commercial activity and residential area. Preserves most open space.
- 2) Bridge - ~~Preserves~~ Preserves open space and uses original building.
- 3) Upper Lower - Has advantage of extra potential capacity.

# SCHEME RANKING

APS: New Elementary School at Reed

*PERKINS*

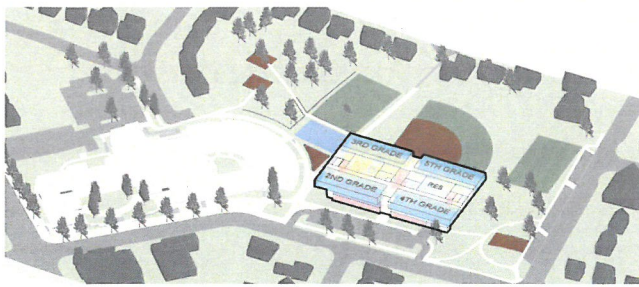
## PFRC

Member

Rank from 1 (Favorite) to 6 (Least Favorite)

### SCHEME

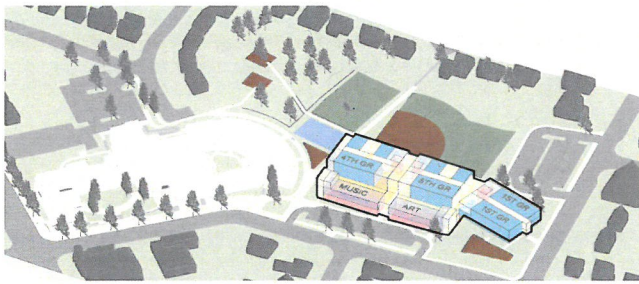
### RANK



#### Upper Lower Scheme

Cost Compared to Budget: **-\$3 to -1M**  
 Total Student Capacity: **732+ Students**  
 Cost per Seat: **\$63-66,000**  
 Increased Impervious Area: **+37,300 SF**  
 Required Parking (Zoning): **150-165 Spaces**

2



#### Standalone Scheme

Cost Compared to Budget: **+\$1 to +3M**  
 Total Student Capacity: **1,003 Students**  
 Cost per Seat: **\$50-52,000**  
 Increased Impervious Area: **+62,700 SF**  
 Required Parking (Zoning): **204 Spaces**

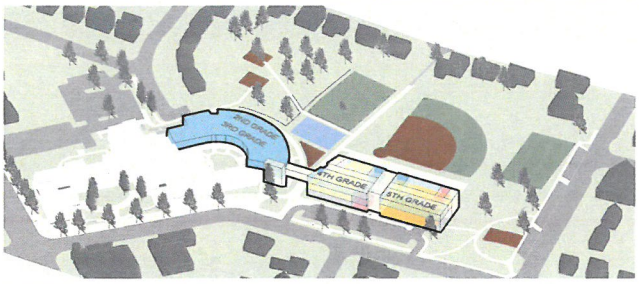
6



#### Integrated Scheme

Cost Compared to Budget: **-\$1 to +1M** ↑  
 Total Student Capacity: **732 Students**  
 Cost per Seat: **\$66-68,000**  
 Increased Impervious Area: **+16,800 SF**  
 Required Parking (Zoning): **150 Spaces**

1



#### Bridge Scheme

Cost Compared to Budget: **-\$1.5 to +0.5M**  
 Total Student Capacity: **732 Students**  
 Cost per Seat: **\$65-67,000**  
 Increased Impervious Area: **+37,300 SF**  
 Required Parking (Zoning): **150 Spaces**

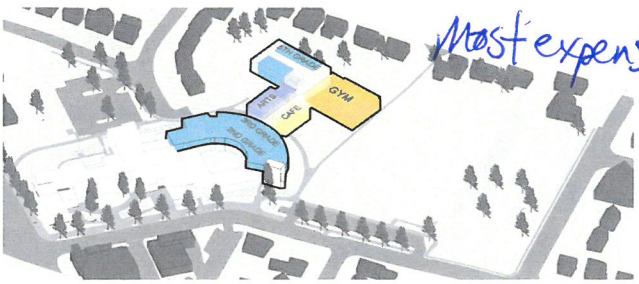
3



#### East Scheme

Cost Compared to Budget: **-\$7 to -5M**  
 Total Student Capacity: **732 Students**  
 Cost per Seat: **\$58-60,000**  
 Increased Impervious Area: **+47,800 SF**  
 Required Parking (Zoning): **150 Spaces**

5



#### North Scheme

Cost Compared to Budget: **-\$0.5 to +1.5M**  
 Total Student Capacity: **732 Students**  
 Cost per Seat: **\$66-68,000**  
 Increased Impervious Area: **+37,300 SF**  
 Required Parking (Zoning): **150 Spaces**

4

1. Integrated scheme preserves green space and open land high cost per seat. however we are not getting more land

Standalone, East: both of these options provide features not desirable by the community or asked by the board.

Upper/lower - preserves some amount of additional growth space if necessary. V. Similar to the Bridge scheme.

Todd M. Cracken

# SCHEME RANKING

APS: New Elementary School at Reed

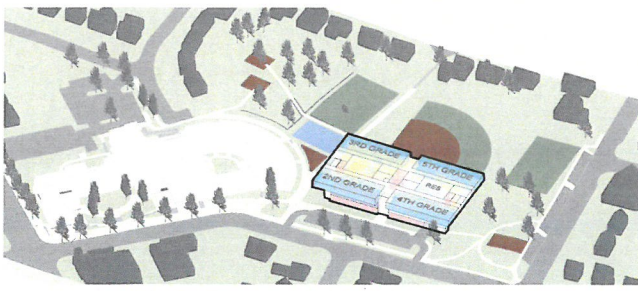
## PFRC

Member

Rank from 1 (Favorite) to 6 (Least Favorite)

### SCHEME

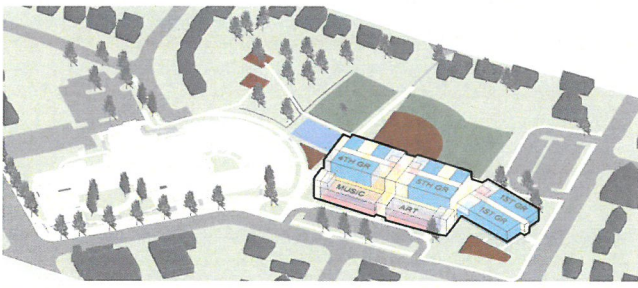
### RANK



#### Upper Lower Scheme

Cost Compared to Budget: **-\$3 to -1M**  
 Total Student Capacity: **732+ Students**  
 Cost per Seat: **\$63-66,000**  
 Increased Impervious Area: **+37,300 SF**  
 Required Parking (Zoning): **150-165 Spaces**

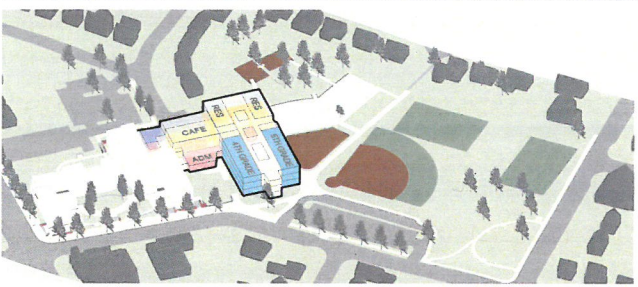
3



#### Standalone Scheme

Cost Compared to Budget: **+\$1 to +3M**  
 Total Student Capacity: **1,003 Students**  
 Cost per Seat: **\$50-52,000**  
 Increased Impervious Area: **+62,700 SF**  
 Required Parking (Zoning): **204 Spaces**

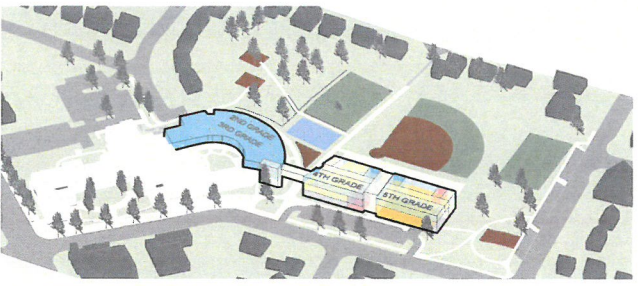
6



#### Integrated Scheme

Cost Compared to Budget: **-\$1 to +1M**  
 Total Student Capacity: **732 Students**  
 Cost per Seat: **\$66-68,000**  
 Increased Impervious Area: **+16,800 SF**  
 Required Parking (Zoning): **150 Spaces**

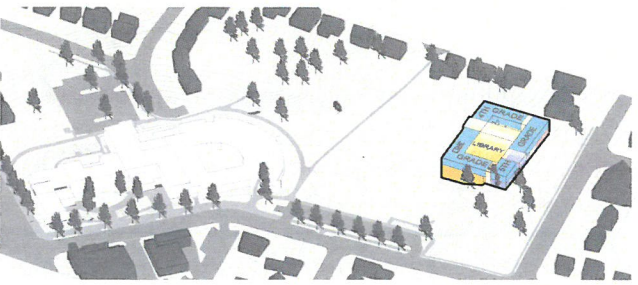
1



#### Bridge Scheme

Cost Compared to Budget: **-\$1.5 to +0.5M**  
 Total Student Capacity: **732 Students**  
 Cost per Seat: **\$65-67,000**  
 Increased Impervious Area: **+37,300 SF**  
 Required Parking (Zoning): **150 Spaces**

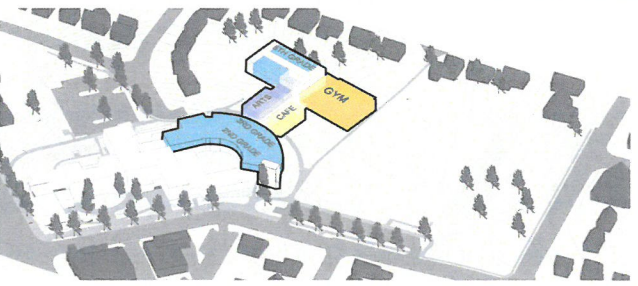
2



#### East Scheme

Cost Compared to Budget: **-\$7 to -5M**  
 Total Student Capacity: **732 Students**  
 Cost per Seat: **\$58-60,000**  
 Increased Impervious Area: **+47,800 SF**  
 Required Parking (Zoning): **150 Spaces**

5



#### North Scheme

Cost Compared to Budget: **-\$0.5 to +1.5M**  
 Total Student Capacity: **732 Students**  
 Cost per Seat: **\$66-68,000**  
 Increased Impervious Area: **+37,300 SF**  
 Required Parking (Zoning): **150 Spaces**

4

