

SCHEME RANKING

APS: New Elementary School at Reed

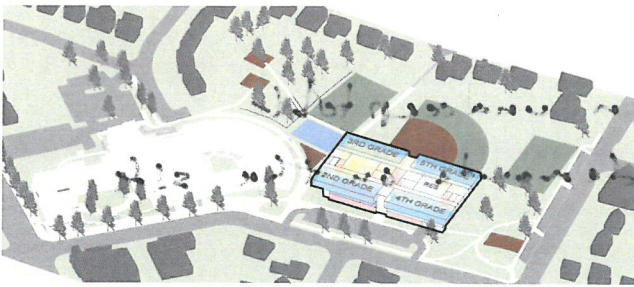
BLPC + PFRC

Joint Member

Rank from 1 (Favorite) to 6 (Least Favorite)

SCHEME

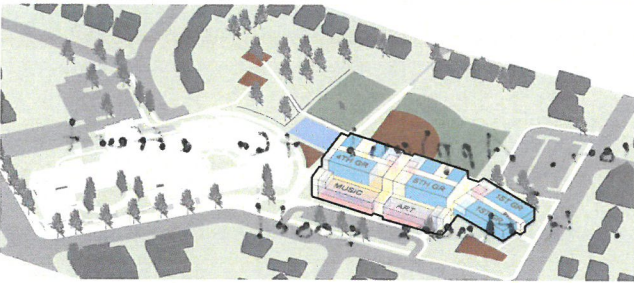
RANK



Upper Lower Scheme

Cost Compared to Budget: **-\$3 to -1M**
 Total Student Capacity: **732+ Students**
 Cost per Seat: **\$63-66,000**
 Increased Impervious Area: **+37,300 SF**
 Required Parking (Zoning): **150-165 Spaces**

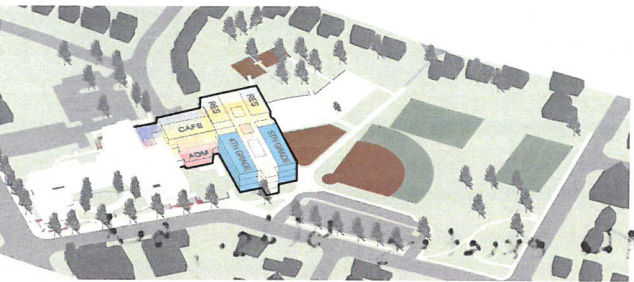
3



Standalone Scheme

Cost Compared to Budget: **+\$1 to +3M**
 Total Student Capacity: **1,003 Students**
 Cost per Seat: **\$50-52,000**
 Increased Impervious Area: **+62,700 SF**
 Required Parking (Zoning): **204 Spaces**

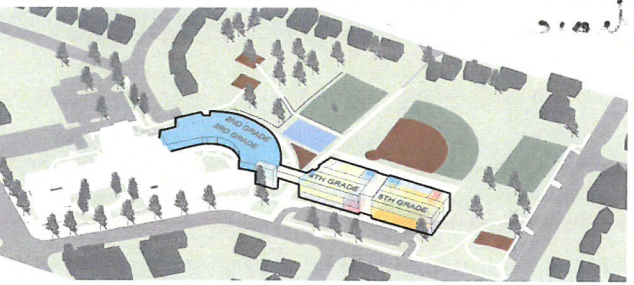
~~6~~



Integrated Scheme

Cost Compared to Budget: **-\$1 to +1M**
 Total Student Capacity: **732 Students**
 Cost per Seat: **\$66-68,000**
 Increased Impervious Area: **+16,800 SF**
 Required Parking (Zoning): **150 Spaces**

1



Bridge Scheme

Cost Compared to Budget: **-\$1.5 to +0.5M**
 Total Student Capacity: **732 Students**
 Cost per Seat: **\$65-67,000**
 Increased Impervious Area: **+37,300 SF**
 Required Parking (Zoning): **150 Spaces**

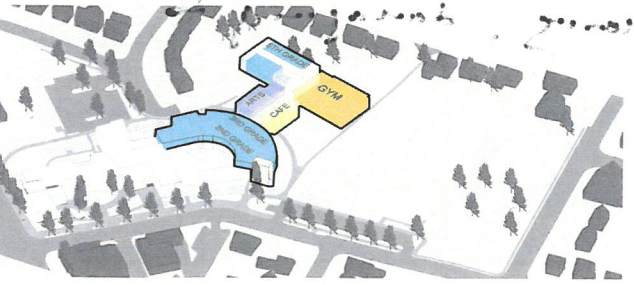
2



East Scheme

Cost Compared to Budget: **-\$7 to -5M**
 Total Student Capacity: **732 Students**
 Cost per Seat: **\$58-60,000**
 Increased Impervious Area: **+47,800 SF**
 Required Parking (Zoning): **150 Spaces**

5



North Scheme

Cost Compared to Budget: **-\$0.5 to +1.5M**
 Total Student Capacity: **732 Students**
 Cost per Seat: **\$66-68,000**
 Increased Impervious Area: **+37,300 SF**
 Required Parking (Zoning): **150 Spaces**

~~6~~

upper lower

Better than standalone, but only by a bit

Standalone

This is just an unacceptable escalation of the demands on the site

Integrated

This is the best option. Applaud the effort to ease the massing. 4 floors good

Bridge

Not crazy about the existing bldg., but this is a rational choice

East

just no

North

expensive, poor functioning, damaging to green space

SCHEME RANKING

APS: New Elementary School at Reed

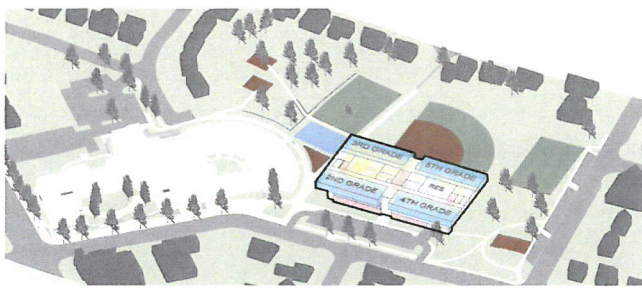
BLPC + PFRC

Joint Member

Rank from 1 (Favorite)
to 6 (Least Favorite)

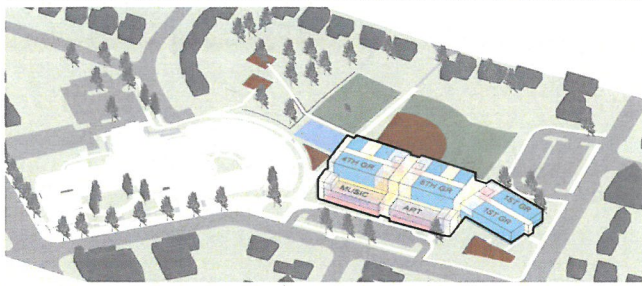
SCHEME

RANK



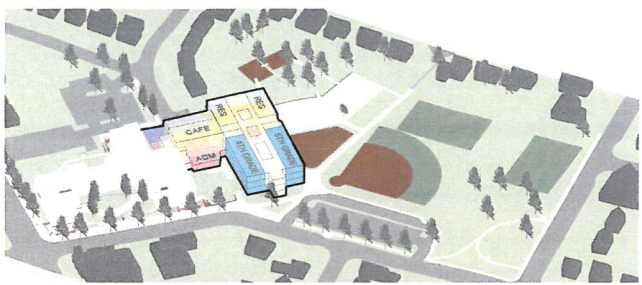
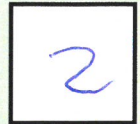
Upper Lower Scheme

Cost Compared to Budget: **-\$3 to -1M**
 Total Student Capacity: **732+ Students**
 Cost per Seat: **\$63-66,000**
 Increased Impervious Area: **+37,300 SF**
 Required Parking (Zoning): **150-165 Spaces**



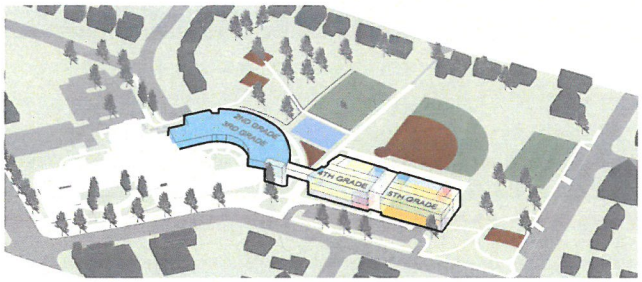
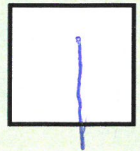
Standalone Scheme

Cost Compared to Budget: **+\$1 to +3M**
 Total Student Capacity: **1,003 Students**
 Cost per Seat: **\$50-52,000**
 Increased Impervious Area: **+62,700 SF**
 Required Parking (Zoning): **204 Spaces**



Integrated Scheme

Cost Compared to Budget: **-\$1 to +1M**
 Total Student Capacity: **732 Students**
 Cost per Seat: **\$66-68,000**
 Increased Impervious Area: **+16,800 SF**
 Required Parking (Zoning): **150 Spaces**



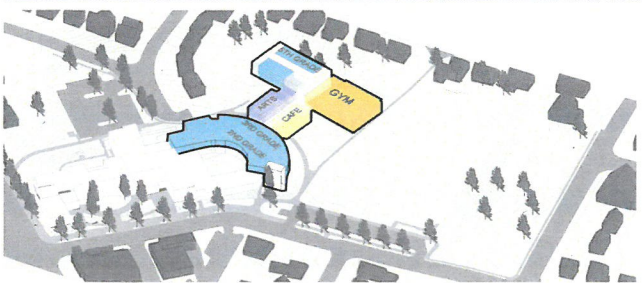
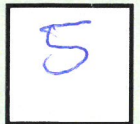
Bridge Scheme

Cost Compared to Budget: **-\$1.5 to +0.5M**
 Total Student Capacity: **732 Students**
 Cost per Seat: **\$65-67,000**
 Increased Impervious Area: **+37,300 SF**
 Required Parking (Zoning): **150 Spaces**



East Scheme

Cost Compared to Budget: **-\$7 to -5M**
 Total Student Capacity: **732 Students**
 Cost per Seat: **\$58-60,000**
 Increased Impervious Area: **+47,800 SF**
 Required Parking (Zoning): **150 Spaces**



North Scheme

Cost Compared to Budget: **-\$0.5 to +1.5M**
 Total Student Capacity: **732 Students**
 Cost per Seat: **\$66-68,000**
 Increased Impervious Area: **+37,300 SF**
 Required Parking (Zoning): **150 Spaces**



② Structure

Bang for buck

Builds for future

③ UIC

better site impact than others
always existing building

SCHEME RANKING

APS: New Elementary School at Reed

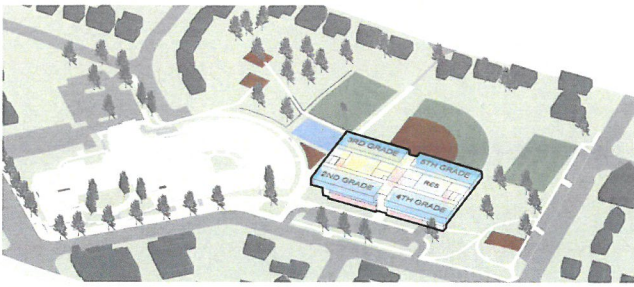
BLPC + PFRC

Joint Member

Rank from 1 (Favorite)
to 6 (Least Favorite)

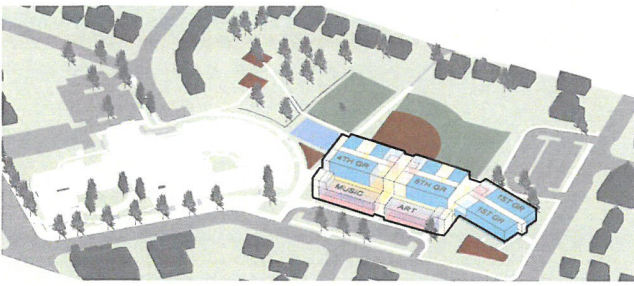
SCHEME

RANK



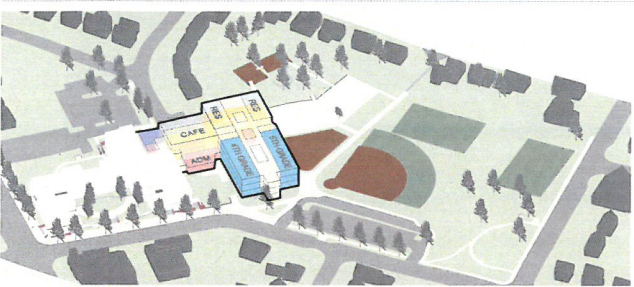
Upper Lower Scheme

Cost Compared to Budget: **-\$3 to -1M**
 Total Student Capacity: **732+ Students**
 Cost per Seat: **\$63-66,000**
 Increased Impervious Area: **+37,300 SF**
 Required Parking (Zoning): **150-165 Spaces**



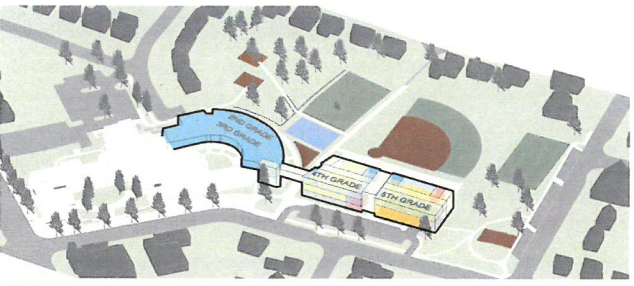
Standalone Scheme

Cost Compared to Budget: **+\$1 to +3M**
 Total Student Capacity: **1,003 Students**
 Cost per Seat: **\$50-52,000**
 Increased Impervious Area: **+62,700 SF**
 Required Parking (Zoning): **204 Spaces**



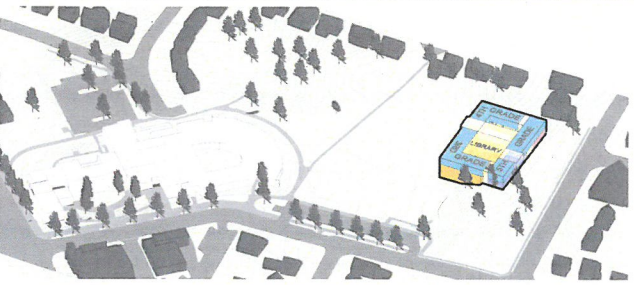
Integrated Scheme

Cost Compared to Budget: **-\$1 to +1M**
 Total Student Capacity: **732 Students**
 Cost per Seat: **\$66-68,000**
 Increased Impervious Area: **+16,800 SF**
 Required Parking (Zoning): **150 Spaces**



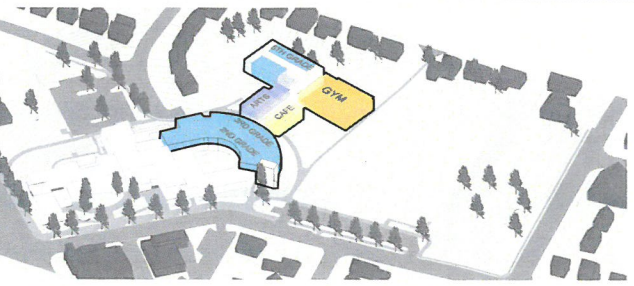
Bridge Scheme

Cost Compared to Budget: **-\$1.5 to +0.5M**
 Total Student Capacity: **732 Students**
 Cost per Seat: **\$65-67,000**
 Increased Impervious Area: **+37,300 SF**
 Required Parking (Zoning): **150 Spaces**



East Scheme

Cost Compared to Budget: **-\$7 to -5M**
 Total Student Capacity: **732 Students**
 Cost per Seat: **\$58-60,000**
 Increased Impervious Area: **+47,800 SF**
 Required Parking (Zoning): **150 Spaces**



North Scheme

Cost Compared to Budget: **-\$0.5 to +1.5M**
 Total Student Capacity: **732 Students**
 Cost per Seat: **\$66-68,000**
 Increased Impervious Area: **+37,300 SF**
 Required Parking (Zoning): **150 Spaces**



Standalone is too destructive to the community.

Integrated: meets the seat requirement
preserves valuable play, / green / open space

Diannettasselmann

SCHEME RANKING

APS: New Elementary School at Reed

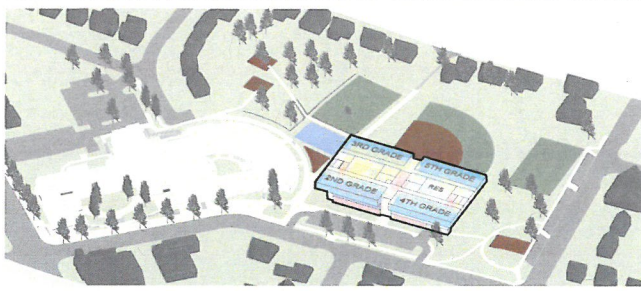
BLPC + PFRC

Joint Member

Rank from 1 (Favorite) to 6 (Least Favorite)

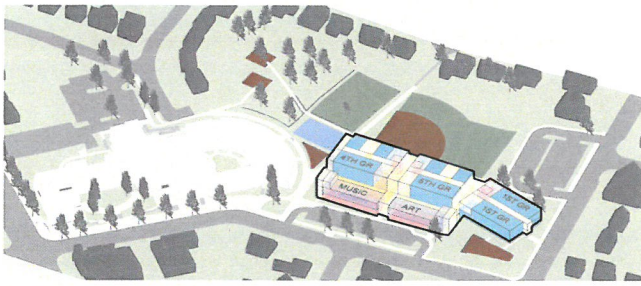
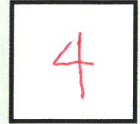
SCHEME

RANK



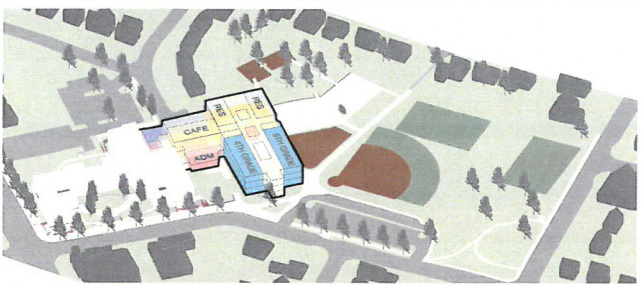
Upper Lower Scheme

Cost Compared to Budget: **-\$3 to -1M**
 Total Student Capacity: **732+ Students**
 Cost per Seat: **\$63-66,000**
 Increased Impervious Area: **+37,300 SF**
 Required Parking (Zoning): **150-165 Spaces**



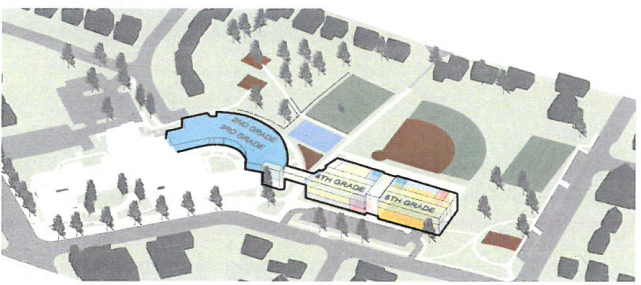
Standalone Scheme

Cost Compared to Budget: **+\$1 to +3M**
 Total Student Capacity: **1,003 Students**
 Cost per Seat: **\$50-52,000**
 Increased Impervious Area: **+62,700 SF**
 Required Parking (Zoning): **204 Spaces**



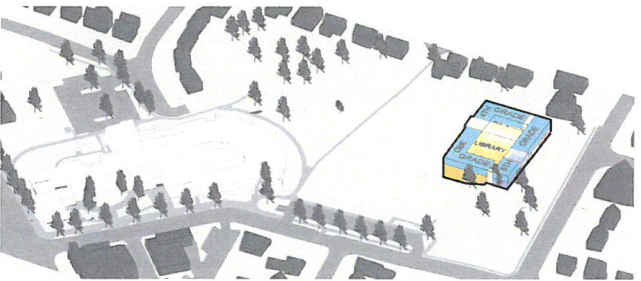
Integrated Scheme

Cost Compared to Budget: **-\$1 to +1M**
 Total Student Capacity: **732 Students**
 Cost per Seat: **\$66-68,000**
 Increased Impervious Area: **+16,800 SF**
 Required Parking (Zoning): **150 Spaces**



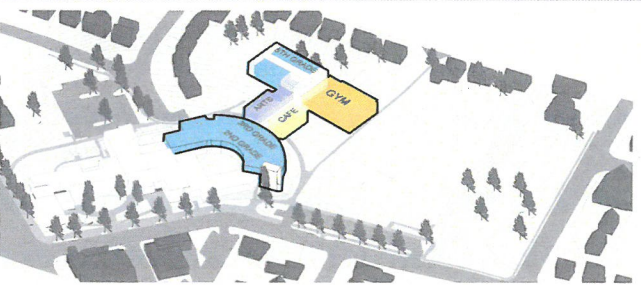
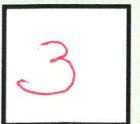
Bridge Scheme

Cost Compared to Budget: **-\$1.5 to +0.5M**
 Total Student Capacity: **732 Students**
 Cost per Seat: **\$65-67,000**
 Increased Impervious Area: **+37,300 SF**
 Required Parking (Zoning): **150 Spaces**



East Scheme

Cost Compared to Budget: **-\$7 to -5M**
 Total Student Capacity: **732 Students**
 Cost per Seat: **\$58-60,000**
 Increased Impervious Area: **+47,800 SF**
 Required Parking (Zoning): **150 Spaces**



North Scheme

Cost Compared to Budget: **-\$0.5 to +1.5M**
 Total Student Capacity: **732 Students**
 Cost per Seat: **\$66-68,000**
 Increased Impervious Area: **+37,300 SF**
 Required Parking (Zoning): **150 Spaces**



We were told Green counts as two votes b/c of two committees
 Please confirm
 Rank from 1 (Favorite) to 6 (Least Favorite)

SCHEME RANKING

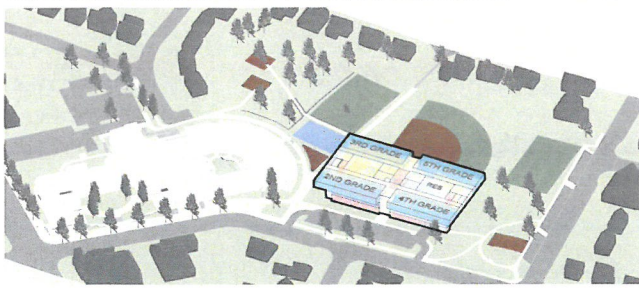
APS: New Elementary School at Reed

BLPC + PFRC

Joint Member

SCHEME

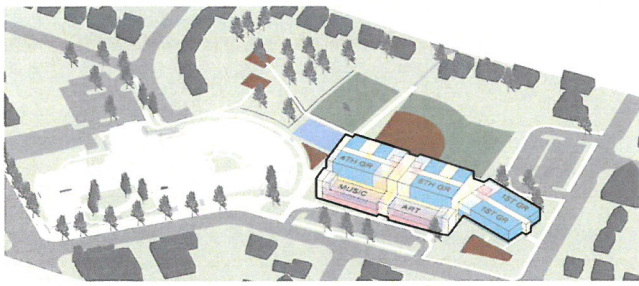
RANK



Upper Lower Scheme

Cost Compared to Budget: **-\$3 to -1M**
 Total Student Capacity: **732+ Students**
 Cost per Seat: **\$63-66,000**
 Increased Impervious Area: **+37,300 SF**
 Required Parking (Zoning): **150-165 Spaces**

2

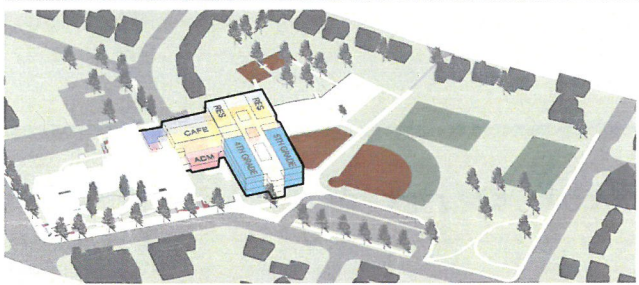


Standalone Scheme

Cost Compared to Budget: **+\$1 to +3M**
 Total Student Capacity: **1,003 Students**
 Cost per Seat: **\$50-52,000**
 Increased Impervious Area: **+62,700 SF**
 Required Parking (Zoning): **204 Spaces**

6

non-starter -> no community support

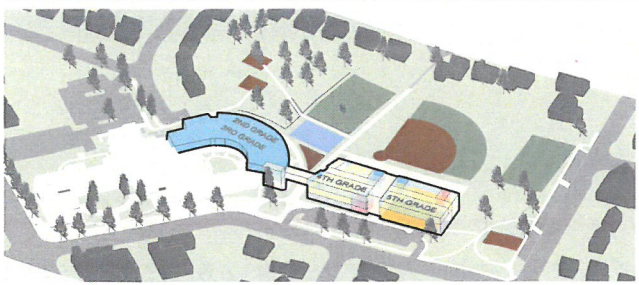


Integrated Scheme

Cost Compared to Budget: **-\$1 to +1M**
 Total Student Capacity: **732 Students**
 Cost per Seat: **\$66-68,000**
 Increased Impervious Area: **+16,800 SF**
 Required Parking (Zoning): **150 Spaces**

1

Clear consensus on this from public, cmte + educators



Bridge Scheme

Cost Compared to Budget: **-\$1.5 to +0.5M**
 Total Student Capacity: **732 Students**
 Cost per Seat: **\$65-67,000**
 Increased Impervious Area: **+37,300 SF**
 Required Parking (Zoning): **150 Spaces**

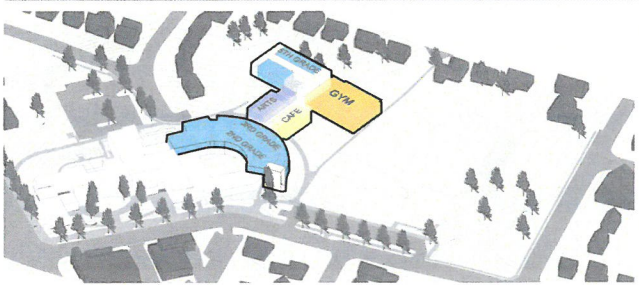
3



East Scheme

Cost Compared to Budget: **-\$7 to -5M**
 Total Student Capacity: **732 Students**
 Cost per Seat: **\$58-60,000**
 Increased Impervious Area: **+47,800 SF**
 Required Parking (Zoning): **150 Spaces**

4



North Scheme

Cost Compared to Budget: **-\$0.5 to +1.5M**
 Total Student Capacity: **732 Students**
 Cost per Seat: **\$66-68,000**
 Increased Impervious Area: **+37,300 SF**
 Required Parking (Zoning): **150 Spaces**

5

Non starter due to fire access

Integrated - Best Because

- Respects the committee process + feedback
 - Meets all aspects of original charter
 - Supports PFRC feedback on green space, concurrent field play, multi-use facility
 - civic design principles
 - Best for learners - Educator preferred
 - Clear community favorite
- 725
- under \$49M
- etc.
- optimal work environment (per teachers)

Other schemes are less optimal because

- Reduces green spaces → which is used by entire country
- Extra capacity (standalone) is not part of charter
- Impenetrable surface issues on most.
- Some talk about standalone as solving for other schools needing upgrades... that is irrelevant. Standalone is ~~a~~ way to address south arlington school upgrades. yes we need to fix failing schools, but a giant school in north west does not accomplish that.