

SCHEME RANKING

APS: New Elementary School at Reed

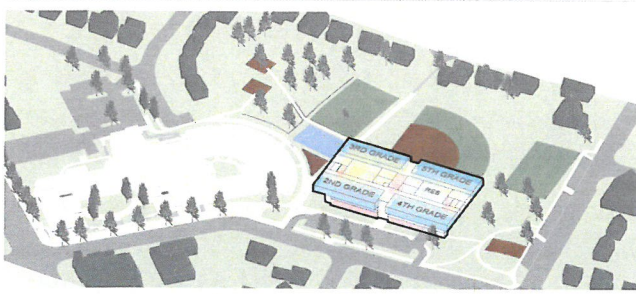
BLPC

Member

Rank from 1 (Favorite) to 6 (Least Favorite)

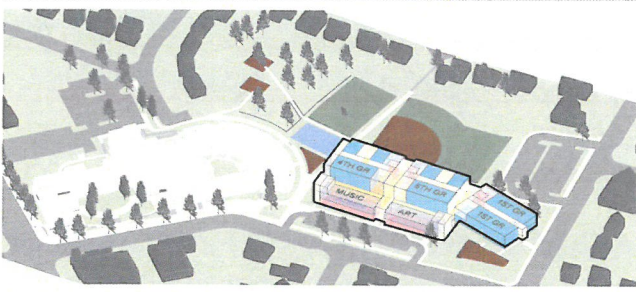
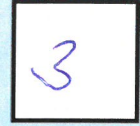
SCHEME

RANK



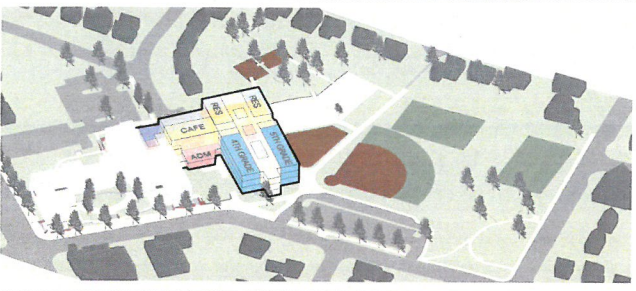
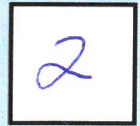
Upper Lower Scheme

Cost Compared to Budget: **-\$3 to -1M**
 Total Student Capacity: **732+ Students**
 Cost per Seat: **\$63-66,000**
 Increased Impervious Area: **+37,300 SF**
 Required Parking (Zoning): **150-165 Spaces**



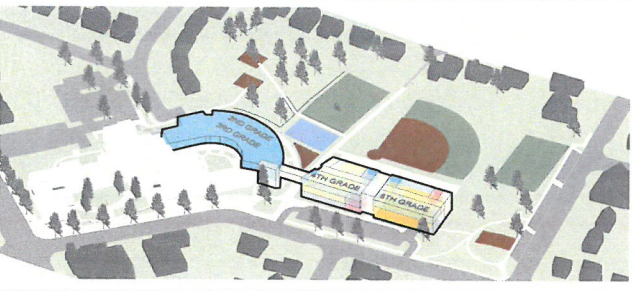
Standalone Scheme

Cost Compared to Budget: **+\$1 to +3M**
 Total Student Capacity: **1,003 Students**
 Cost per Seat: **\$50-52,000**
 Increased Impervious Area: **+62,700 SF**
 Required Parking (Zoning): **204 Spaces**



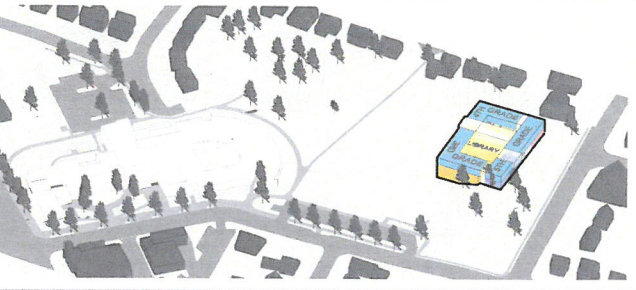
Integrated Scheme

Cost Compared to Budget: **-\$1 to +1M**
 Total Student Capacity: **732 Students**
 Cost per Seat: **\$66-68,000**
 Increased Impervious Area: **+16,800 SF**
 Required Parking (Zoning): **150 Spaces**



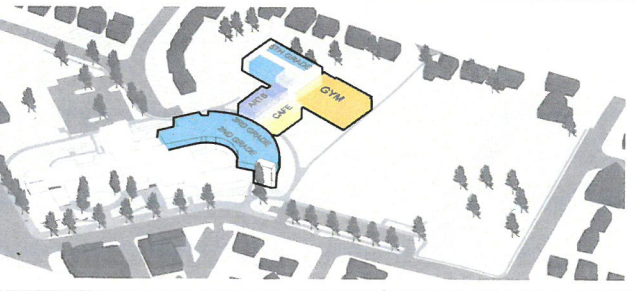
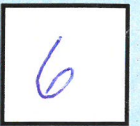
Bridge Scheme

Cost Compared to Budget: **-\$1.5 to +0.5M**
 Total Student Capacity: **732 Students**
 Cost per Seat: **\$65-67,000**
 Increased Impervious Area: **+37,300 SF**
 Required Parking (Zoning): **150 Spaces**



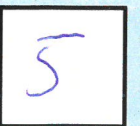
East Scheme

Cost Compared to Budget: **-\$7 to -5M**
 Total Student Capacity: **732 Students**
 Cost per Seat: **\$58-60,000**
 Increased Impervious Area: **+47,800 SF**
 Required Parking (Zoning): **150 Spaces**



North Scheme

Cost Compared to Budget: **-\$0.5 to +1.5M**
 Total Student Capacity: **732 Students**
 Cost per Seat: **\$66-68,000**
 Increased Impervious Area: **+37,300 SF**
 Required Parking (Zoning): **150 Spaces**



#1 Integrated model - most efficient.
Love the 4 stories - Most green
space. All around good for kids.

#2 choice. - all students in one building
will have to have a good plan for
current Reed space. Extra seats good

#3 choice - Upper lower - not ideal, loss of
community. Hard to administer two
buildings

SCHEME RANKING

APS: New Elementary School at Reed

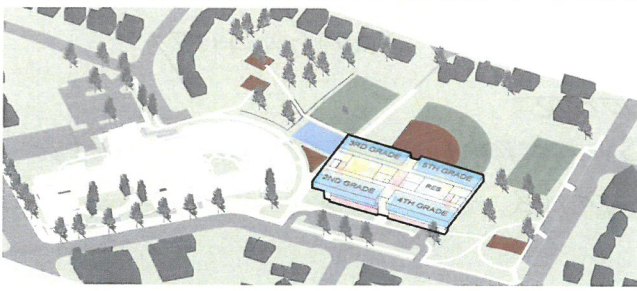
BLPC

Member

Rank from 1 (Favorite) to 6 (Least Favorite)

SCHEME

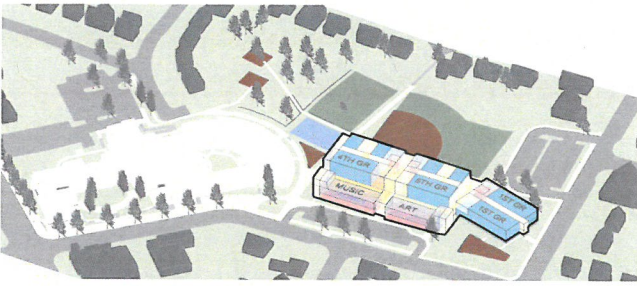
RANK



Upper Lower Scheme

Cost Compared to Budget: **-\$3 to -1M**
 Total Student Capacity: **732+ Students**
 Cost per Seat: **\$63-66,000**
 Increased Impervious Area: **+37,300 SF**
 Required Parking (Zoning): **150-165 Spaces**

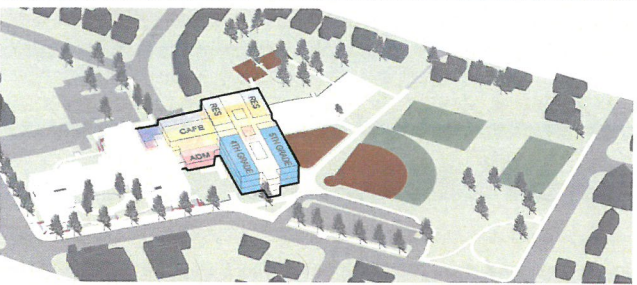
3



Standalone Scheme

Cost Compared to Budget: **+\$1 to +3M**
 Total Student Capacity: **1,003 Students**
 Cost per Seat: **\$50-52,000**
 Increased Impervious Area: **+62,700 SF**
 Required Parking (Zoning): **204 Spaces**

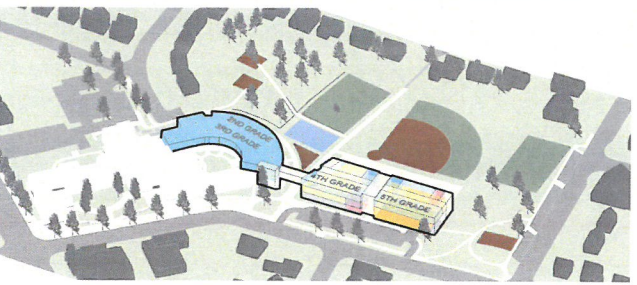
6



Integrated Scheme

Cost Compared to Budget: **-\$1 to +1M**
 Total Student Capacity: **732 Students**
 Cost per Seat: **\$66-68,000**
 Increased Impervious Area: **+16,800 SF**
 Required Parking (Zoning): **150 Spaces**

1



Bridge Scheme

Cost Compared to Budget: **-\$1.5 to +0.5M**
 Total Student Capacity: **732 Students**
 Cost per Seat: **\$65-67,000**
 Increased Impervious Area: **+37,300 SF**
 Required Parking (Zoning): **150 Spaces**

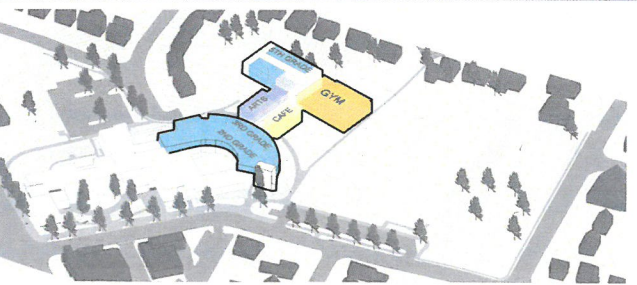
4



East Scheme

Cost Compared to Budget: **-\$7 to -5M**
 Total Student Capacity: **732 Students**
 Cost per Seat: **\$58-60,000**
 Increased Impervious Area: **+47,800 SF**
 Required Parking (Zoning): **150 Spaces**

2



North Scheme

Cost Compared to Budget: **-\$0.5 to +1.5M**
 Total Student Capacity: **732 Students**
 Cost per Seat: **\$66-68,000**
 Increased Impervious Area: **+37,300 SF**
 Required Parking (Zoning): **150 Spaces**

5

1. Integrated - most compact, favorite by educators + community
2. East Scheme - ~~moves~~ some distributes traffic + parking better less disruptive to retail + library
3. Upper Lower - still relatively compact, utilizes current building
4. Bridge Scheme - concern about building on non-functional bldg
5. North Scheme, - fire/emergency issues loss of trees
6. Standalone - too spread out places too much capacity on one site

SCHEME RANKING

APS: New Elementary School at Reed

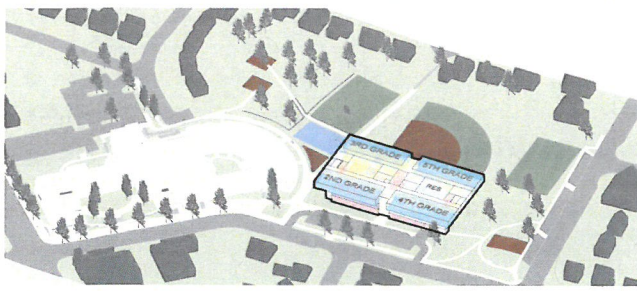
BLPC

Member

Rank from 1 (Favorite)
to 6 (Least Favorite)

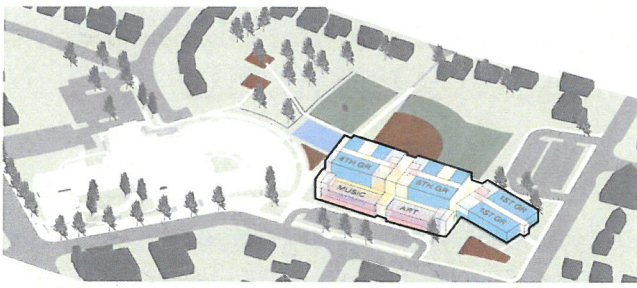
SCHEME

RANK



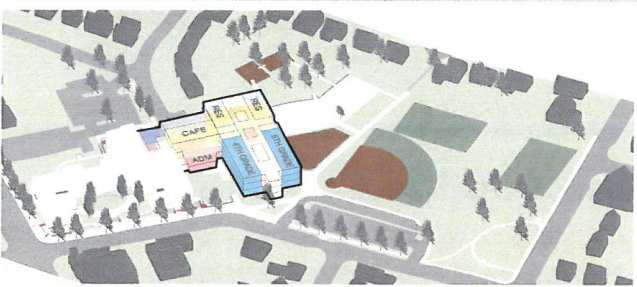
Upper Lower Scheme

Cost Compared to Budget: **-\$3 to -1M**
 Total Student Capacity: **732+ Students**
 Cost per Seat: **\$63-66,000**
 Increased Impervious Area: **+37,300 SF**
 Required Parking (Zoning): **150-165 Spaces**



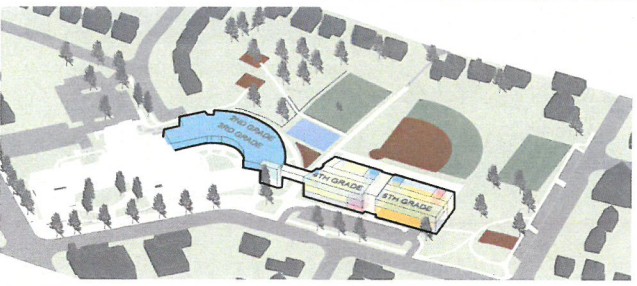
Standalone Scheme

Cost Compared to Budget: **+\$1 to +3M**
 Total Student Capacity: **1,003 Students**
 Cost per Seat: **\$50-52,000**
 Increased Impervious Area: **+62,700 SF**
 Required Parking (Zoning): **204 Spaces**



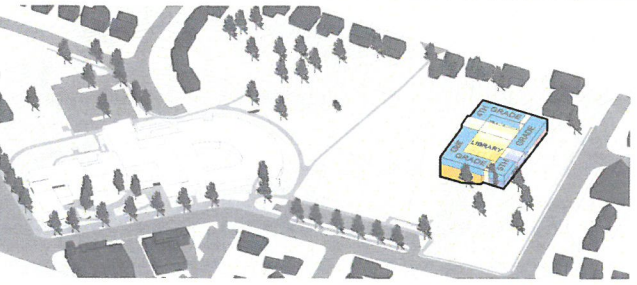
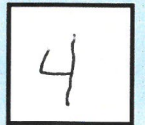
Integrated Scheme

Cost Compared to Budget: **-\$1 to +1M**
 Total Student Capacity: **732 Students**
 Cost per Seat: **\$66-68,000**
 Increased Impervious Area: **+16,800 SF**
 Required Parking (Zoning): **150 Spaces**



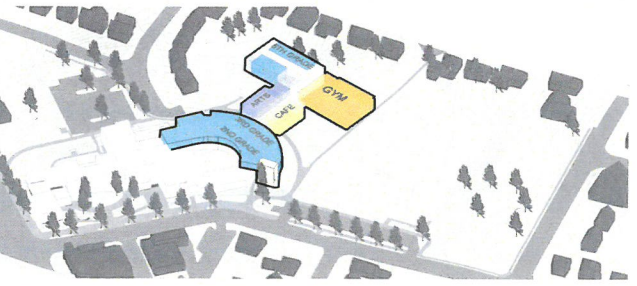
Bridge Scheme

Cost Compared to Budget: **-\$1.5 to +0.5M**
 Total Student Capacity: **732 Students**
 Cost per Seat: **\$65-67,000**
 Increased Impervious Area: **+37,300 SF**
 Required Parking (Zoning): **150 Spaces**



East Scheme

Cost Compared to Budget: **-\$7 to -5M**
 Total Student Capacity: **732 Students**
 Cost per Seat: **\$58-60,000**
 Increased Impervious Area: **+47,800 SF**
 Required Parking (Zoning): **150 Spaces**



North Scheme

Cost Compared to Budget: **-\$0.5 to +1.5M**
 Total Student Capacity: **732 Students**
 Cost per Seat: **\$66-68,000**
 Increased Impervious Area: **+37,300 SF**
 Required Parking (Zoning): **150 Spaces**



Upper/Lower - Cannot realistically have one program in 2 schools

Stand Alone - same as integrated - one bldg for comprehensive program
allows increased capacity not expected prior to program
4th process

Integrated 3 story \rightarrow 4 story
4 story - instructional flow, space to keep small group at grade levels
1 cafe }
1 gym } stuffing
specials } matches

bridge too closely related to the upper/lower or East scheme

~~North East~~ NO! Just NO!

East North • whole instructional program in 1 Bldg
• uses existing space

SCHEME RANKING

APS: New Elementary School at Reed

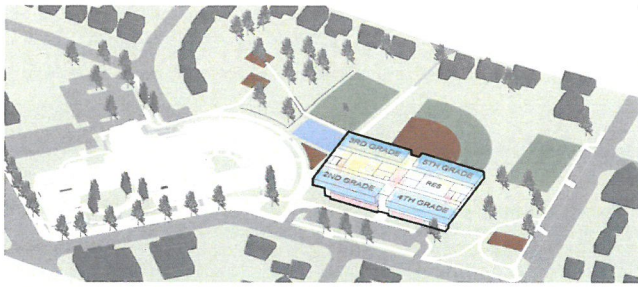
BLPC

Member

Rank from 1 (Favorite)
to 6 (Least Favorite)

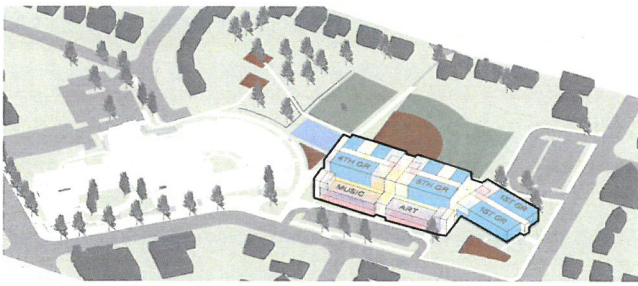
SCHEME

RANK



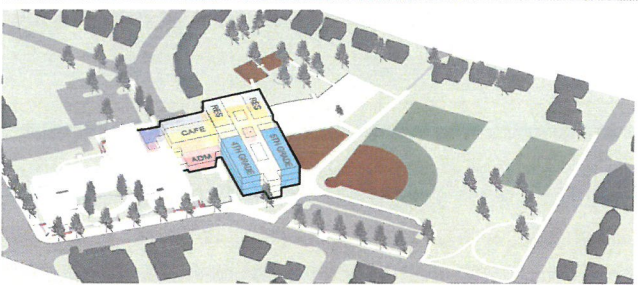
Upper Lower Scheme

Cost Compared to Budget: **-\$3 to -1M**
 Total Student Capacity: **732+ Students**
 Cost per Seat: **\$63-66,000**
 Increased Impervious Area: **+37,300 SF**
 Required Parking (Zoning): **150-165 Spaces**



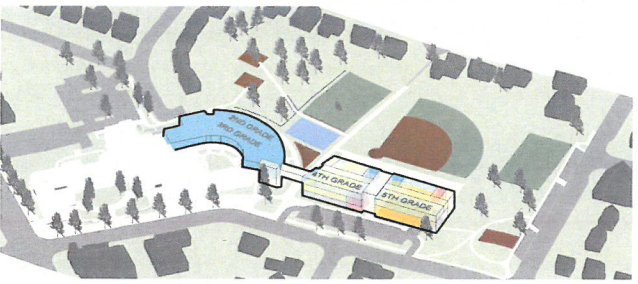
Standalone Scheme

Cost Compared to Budget: **+\$1 to +3M**
 Total Student Capacity: **1,003 Students**
 Cost per Seat: **\$50-52,000**
 Increased Impervious Area: **+62,700 SF**
 Required Parking (Zoning): **204 Spaces**



Integrated Scheme

Cost Compared to Budget: **-\$1 to +1M**
 Total Student Capacity: **732 Students**
 Cost per Seat: **\$66-68,000**
 Increased Impervious Area: **+16,800 SF**
 Required Parking (Zoning): **150 Spaces**



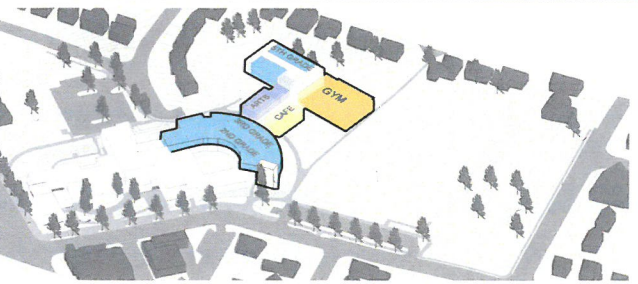
Bridge Scheme

Cost Compared to Budget: **-\$1.5 to +0.5M**
 Total Student Capacity: **732 Students**
 Cost per Seat: **\$65-67,000**
 Increased Impervious Area: **+37,300 SF**
 Required Parking (Zoning): **150 Spaces**



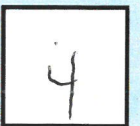
East Scheme

Cost Compared to Budget: **-\$7 to -5M**
 Total Student Capacity: **732 Students**
 Cost per Seat: **\$58-60,000**
 Increased Impervious Area: **+47,800 SF**
 Required Parking (Zoning): **150 Spaces**



North Scheme

Cost Compared to Budget: **-\$0.5 to +1.5M**
 Total Student Capacity: **732 Students**
 Cost per Seat: **\$66-68,000**
 Increased Impervious Area: **+37,300 SF**
 Required Parking (Zoning): **150 Spaces**



Intergrated:

- best use of space
- school community
- transition time

Stand alone:

- School community
- more seats
- 1 school

SCHEME RANKING

APS: New Elementary School at Reed

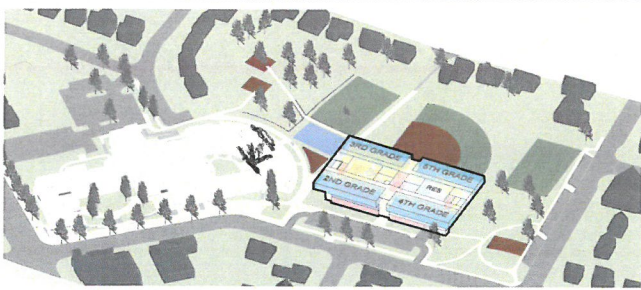
BLPC

Member

Rank from 1 (Favorite) to 6 (Least Favorite)

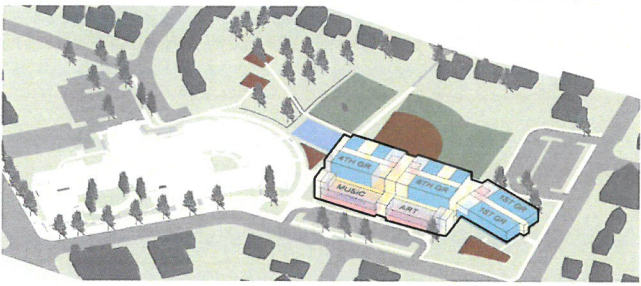
SCHEME

RANK



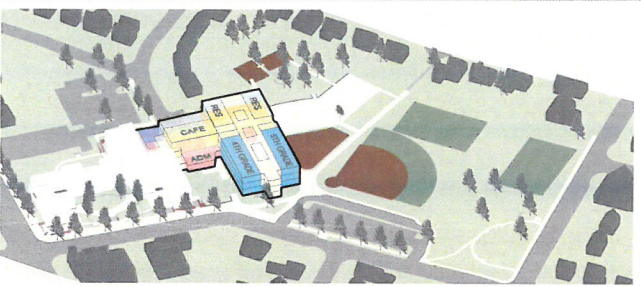
Upper Lower Scheme

Cost Compared to Budget: **-\$3 to -1M**
 Total Student Capacity: **732+ Students**
 Cost per Seat: **\$63-66,000**
 Increased Impervious Area: **+37,300 SF**
 Required Parking (Zoning): **150-165 Spaces**



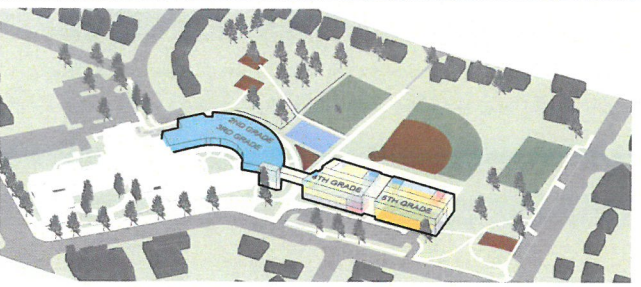
Standalone Scheme

Cost Compared to Budget: **+\$1 to +3M**
 Total Student Capacity: **1,003 Students**
 Cost per Seat: **\$50-52,000**
 Increased Impervious Area: **+62,700 SF**
 Required Parking (Zoning): **204 Spaces**



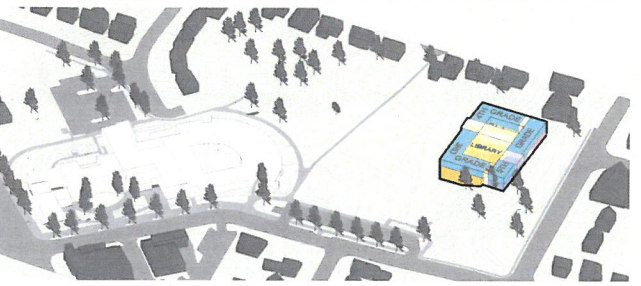
Integrated Scheme

Cost Compared to Budget: **-\$1 to +1M**
 Total Student Capacity: **732 Students**
 Cost per Seat: **\$66-68,000**
 Increased Impervious Area: **+16,800 SF**
 Required Parking (Zoning): **150 Spaces**



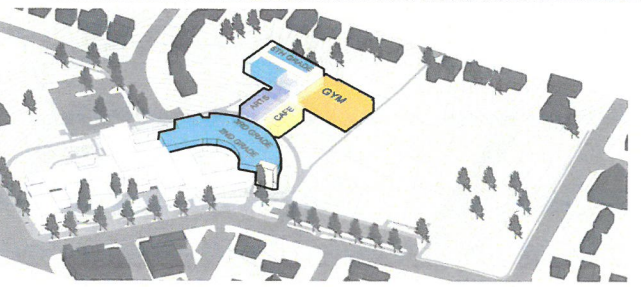
Bridge Scheme

Cost Compared to Budget: **-\$1.5 to +0.5M**
 Total Student Capacity: **732 Students**
 Cost per Seat: **\$65-67,000**
 Increased Impervious Area: **+37,300 SF**
 Required Parking (Zoning): **150 Spaces**



East Scheme

Cost Compared to Budget: **-\$7 to -5M**
 Total Student Capacity: **732 Students**
 Cost per Seat: **\$58-60,000**
 Increased Impervious Area: **+47,800 SF**
 Required Parking (Zoning): **150 Spaces**



North Scheme

Cost Compared to Budget: **-\$0.5 to +1.5M**
 Total Student Capacity: **732 Students**
 Cost per Seat: **\$66-68,000**
 Increased Impervious Area: **+37,300 SF**
 Required Parking (Zoning): **150 Spaces**



2. I chose this as my 2nd choice because it lends itself to a 2nd floor expansion on the lower school for the future
3. I chose this option because Arlington isn't getting any smaller!

SCHEME RANKING

APS: New Elementary School at Reed

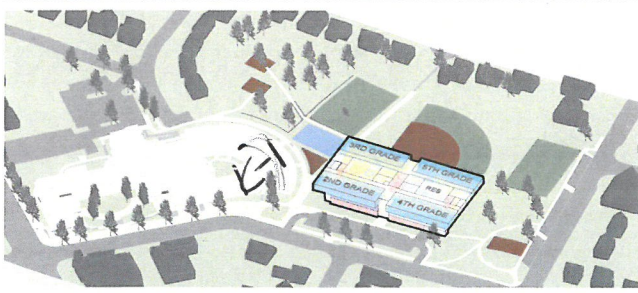
BLPC

Member

Rank from 1 (Favorite) to 6 (Least Favorite)

SCHEME

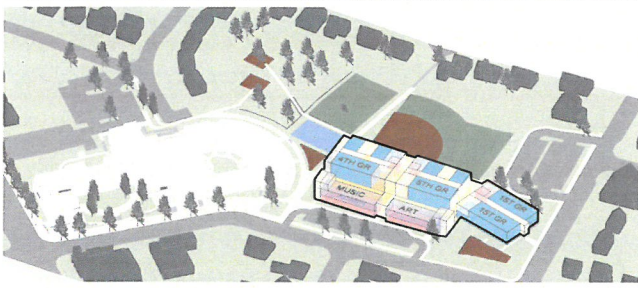
RANK



Upper Lower Scheme

Cost Compared to Budget: **-\$3 to -1M**
 Total Student Capacity: **732+ Students**
 Cost per Seat: **\$63-66,000**
 Increased Impervious Area: **+37,300 SF**
 Required Parking (Zoning): **150-165 Spaces**

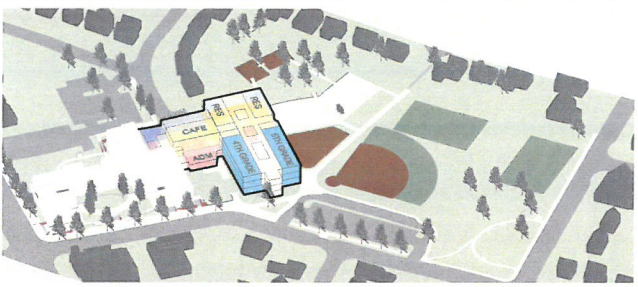
3



Standalone Scheme

Cost Compared to Budget: **+\$1 to +3M**
 Total Student Capacity: **1,003 Students**
 Cost per Seat: **\$50-52,000**
 Increased Impervious Area: **+62,700 SF**
 Required Parking (Zoning): **204 Spaces**

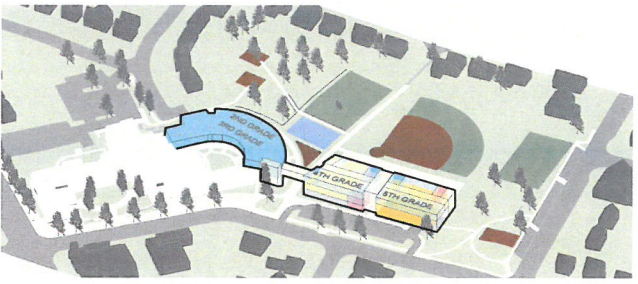
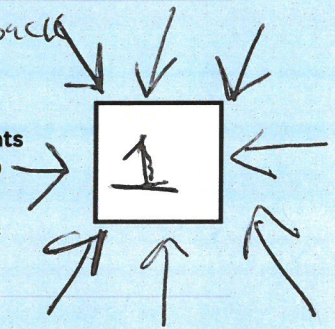
6



Integrated Scheme

Cost Compared to Budget: **-\$1 to +1M**
 Total Student Capacity: **732 Students**
 Cost per Seat: **\$66-68,000**
 Increased Impervious Area: **+16,800 SF**
 Required Parking (Zoning): **150 Spaces**

green space



Bridge Scheme

Cost Compared to Budget: **-\$1.5 to +0.5M**
 Total Student Capacity: **732 Students**
 Cost per Seat: **\$65-67,000**
 Increased Impervious Area: **+37,300 SF**
 Required Parking (Zoning): **150 Spaces**

2

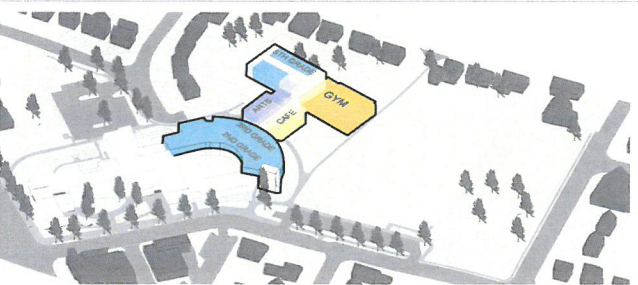


East Scheme

not desirable for educational space

Cost Compared to Budget: **-\$7 to -5M**
 Total Student Capacity: **732 Students**
 Cost per Seat: **\$58-60,000**
 Increased Impervious Area: **+47,800 SF**
 Required Parking (Zoning): **150 Spaces**

5



North Scheme

fire / remove all trees

Cost Compared to Budget: **-\$0.5 to +1.5M**
 Total Student Capacity: **732 Students**
 Cost per Seat: **\$66-68,000**
 Increased Impervious Area: **+37,300 SF**
 Required Parking (Zoning): **150 Spaces**

4

- Choosing my second and third favorite ~~and~~ options was difficult because all options other than the Integrated ~~and~~ concept involve serious compromises without a corresponding fall in budget. Thus, my also runs are more a function of eliminating the worst options than genuinely embracing another option.

SCHEME RANKING

APS: New Elementary School at Reed

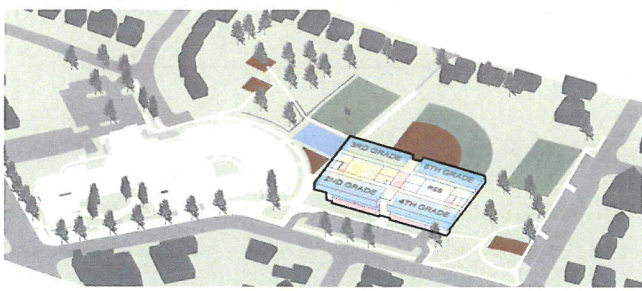
BLPC

Member

Rank from 1 (Favorite) to 6 (Least Favorite)

SCHEME

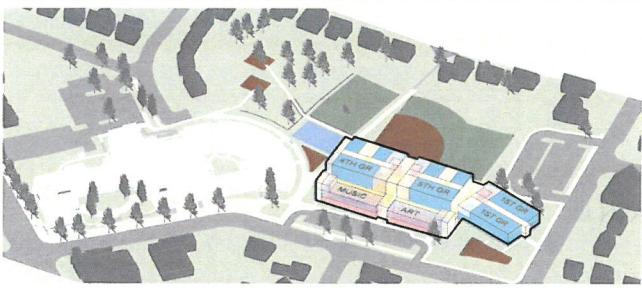
RANK



Upper Lower Scheme

Cost Compared to Budget: **-\$3 to -1M**
 Total Student Capacity: **732+ Students**
 Cost per Seat: **\$63-66,000**
 Increased Impervious Area: **+37,300 SF**
 Required Parking (Zoning): **150-165 Spaces**

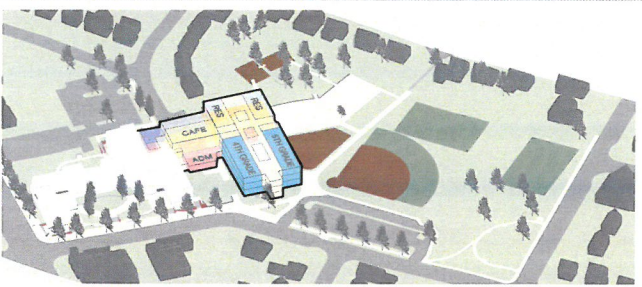
3



Standalone Scheme

Cost Compared to Budget: **+\$1 to +3M**
 Total Student Capacity: **1,003 Students**
 Cost per Seat: **\$50-52,000**
 Increased Impervious Area: **+62,700 SF**
 Required Parking (Zoning): **204 Spaces**

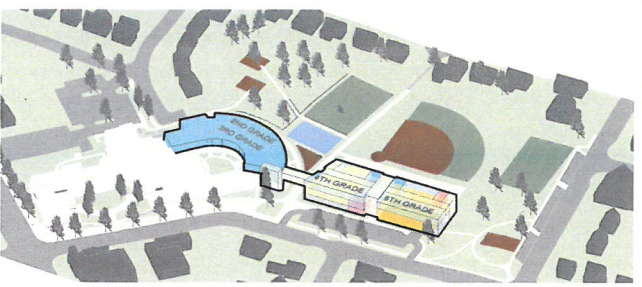
5



Integrated Scheme

Cost Compared to Budget: **-\$1 to +1M**
 Total Student Capacity: **732 Students**
 Cost per Seat: **\$66-68,000**
 Increased Impervious Area: **+16,800 SF**
 Required Parking (Zoning): **150 Spaces**

1

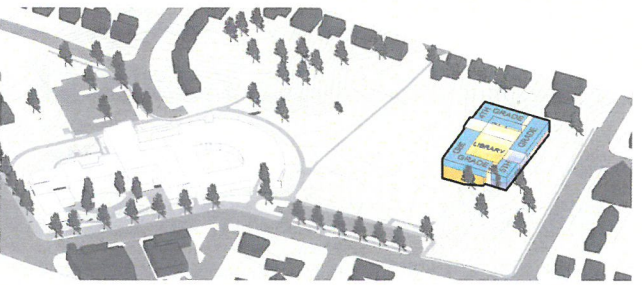


Bridge Scheme

Cost Compared to Budget: **-\$1.5 to +0.5M**
 Total Student Capacity: **732 Students**
 Cost per Seat: **\$65-67,000**
 Increased Impervious Area: **+37,300 SF**
 Required Parking (Zoning): **150 Spaces**

2

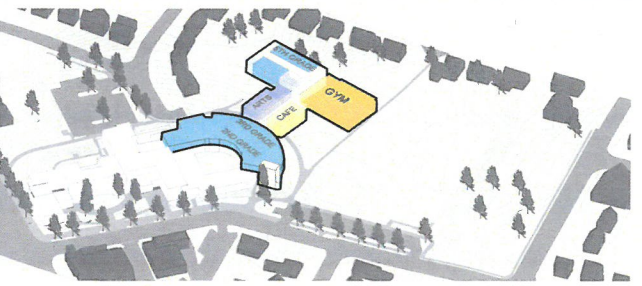
I like that it has the bridge connecting it all together



East Scheme

Cost Compared to Budget: **-\$7 to -5M**
 Total Student Capacity: **732 Students**
 Cost per Seat: **\$58-60,000**
 Increased Impervious Area: **+47,800 SF**
 Required Parking (Zoning): **150 Spaces**

6



North Scheme

Cost Compared to Budget: **-\$0.5 to +1.5M**
 Total Student Capacity: **732 Students**
 Cost per Seat: **\$66-68,000**
 Increased Impervious Area: **+37,300 SF**
 Required Parking (Zoning): **150 Spaces**

4

Upper Lower (3)

- Upper lower not as appealing because the two schools are not as connected
- Has space to add extra classes on top instead of adding trailers
- more required parking (-)

Bridge Scheme (2)

- more design appeal
- bridge makes it feel more interconnected

SCHEME RANKING

APS: New Elementary School at Reed

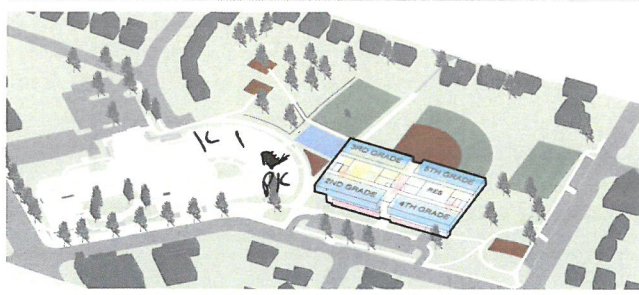
BLPC

Member

Rank from 1 (Favorite) to 6 (Least Favorite)

SCHEME

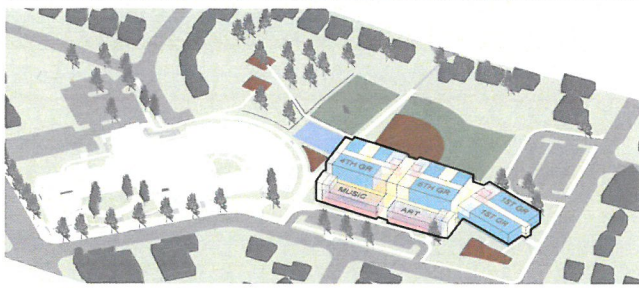
RANK



Upper Lower Scheme

Cost Compared to Budget: **-\$3 to -1M**
 Total Student Capacity: **732+ Students**
 Cost per Seat: **\$63-66,000**
 Increased Impervious Area: **+37,300 SF**
 Required Parking (Zoning): **150-165 Spaces**

2



Standalone Scheme

Cost Compared to Budget: **+\$1 to +3M**
 Total Student Capacity: **1,003 Students**
 Cost per Seat: **\$50-52,000**
 Increased Impervious Area: **+62,700 SF**
 Required Parking (Zoning): **204 Spaces**

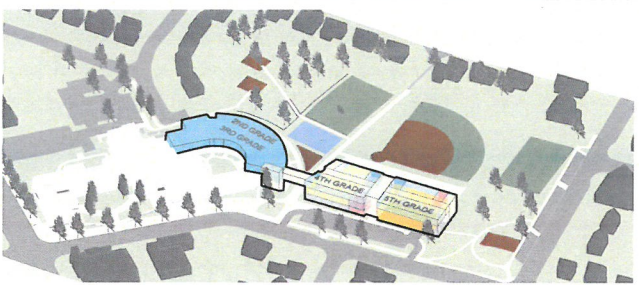
6



Integrated Scheme

Cost Compared to Budget: **-\$1 to +1M**
 Total Student Capacity: **732 Students**
 Cost per Seat: **\$66-68,000**
 Increased Impervious Area: **+16,800 SF**
 Required Parking (Zoning): **150 Spaces**

1



Bridge Scheme

Cost Compared to Budget: **-\$1.5 to +0.5M**
 Total Student Capacity: **732 Students**
 Cost per Seat: **\$65-67,000**
 Increased Impervious Area: **+37,300 SF**
 Required Parking (Zoning): **150 Spaces**

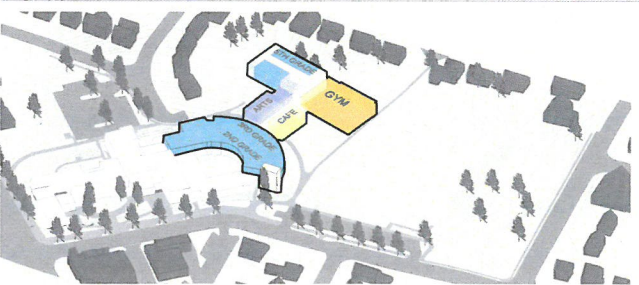
4



East Scheme

Cost Compared to Budget: **-\$7 to -5M**
 Total Student Capacity: **732 Students**
 Cost per Seat: **\$58-60,000**
 Increased Impervious Area: **+47,800 SF**
 Required Parking (Zoning): **150 Spaces**

5



North Scheme

Cost Compared to Budget: **-\$0.5 to +1.5M**
 Total Student Capacity: **732 Students**
 Cost per Seat: **\$66-68,000**
 Increased Impervious Area: **+37,300 SF**
 Required Parking (Zoning): **150 Spaces**

3

- Upper Lower Scheme

- some money saved

- North

- could pull traffic/transportation away from Westover

<

SCHEME RANKING

APS: New Elementary School at Reed

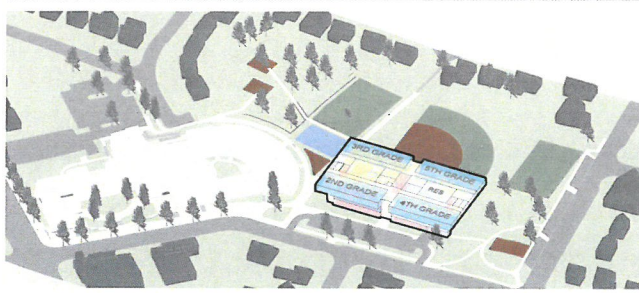
BLPC

Member

Rank from 1 (Favorite)
to 6 (Least Favorite)

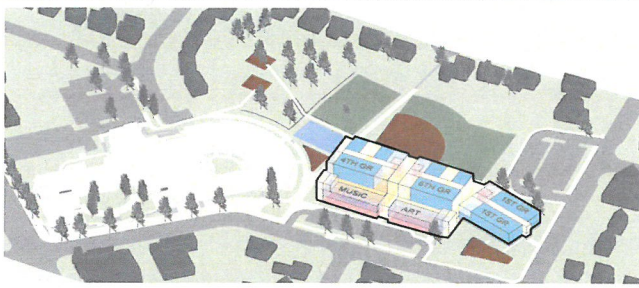
SCHEME

RANK



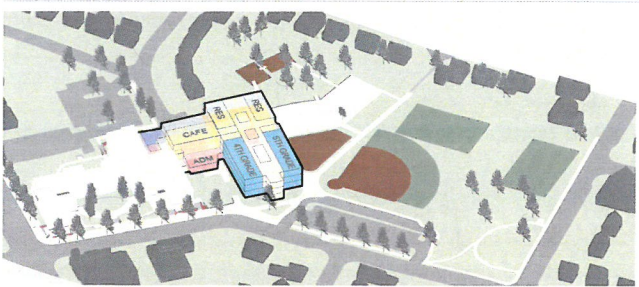
Upper Lower Scheme

Cost Compared to Budget: **-\$3 to -1M**
 Total Student Capacity: **732+ Students**
 Cost per Seat: **\$63-66,000**
 Increased Impervious Area: **+37,300 SF**
 Required Parking (Zoning): **150-165 Spaces**



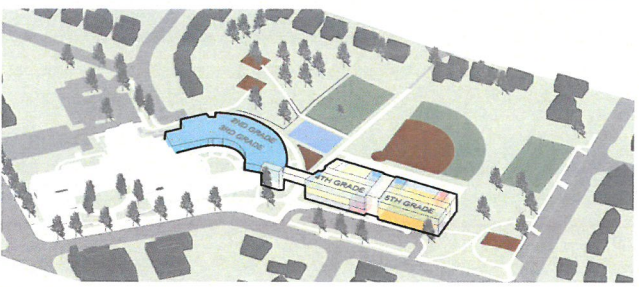
Standalone Scheme

Cost Compared to Budget: **+\$1 to +3M**
 Total Student Capacity: **1,003 Students**
 Cost per Seat: **\$50-52,000**
 Increased Impervious Area: **+62,700 SF**
 Required Parking (Zoning): **204 Spaces**



Integrated Scheme

Cost Compared to Budget: **-\$1 to +1M**
 Total Student Capacity: **732 Students**
 Cost per Seat: **\$66-68,000**
 Increased Impervious Area: **+16,800 SF**
 Required Parking (Zoning): **150 Spaces**



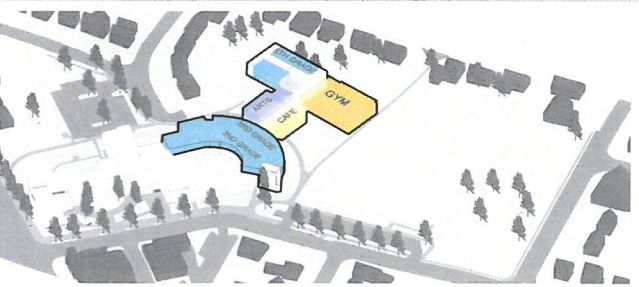
Bridge Scheme

Cost Compared to Budget: **-\$1.5 to +0.5M**
 Total Student Capacity: **732 Students**
 Cost per Seat: **\$65-67,000**
 Increased Impervious Area: **+37,300 SF**
 Required Parking (Zoning): **150 Spaces**



East Scheme

Cost Compared to Budget: **-\$7 to -5M**
 Total Student Capacity: **732 Students**
 Cost per Seat: **\$58-60,000**
 Increased Impervious Area: **+47,800 SF**
 Required Parking (Zoning): **150 Spaces**



North Scheme

Cost Compared to Budget: **-\$0.5 to +1.5M**
 Total Student Capacity: **732 Students**
 Cost per Seat: **\$66-68,000**
 Increased Impervious Area: **+37,300 SF**
 Required Parking (Zoning): **150 Spaces**



1 - Integrated Scheme

- best use of space
- maintains school community + high functionality
- I like the 4 ~~quarters~~ stories for travel time

2 - Standalone

- ~~great~~ great use of space
- I like that school is under one roof
- would prefer less seats if possible

SCHEME RANKING

APS: New Elementary School at Reed

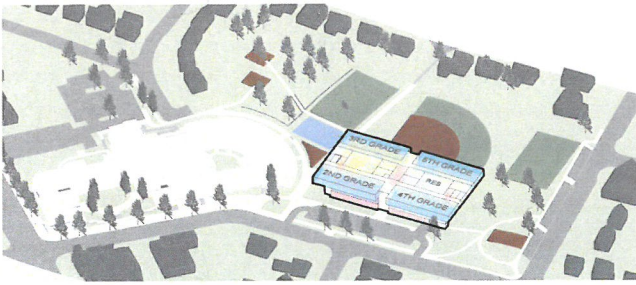
BLPC

Member

Rank from 1 (Favorite) to 6 (Least Favorite)

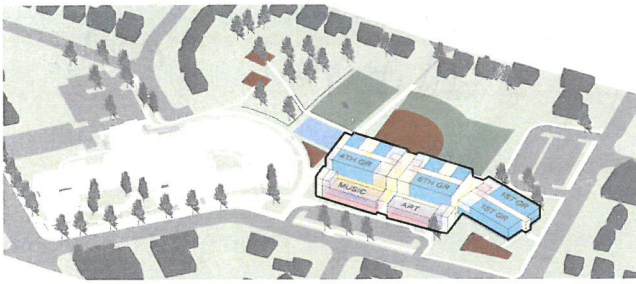
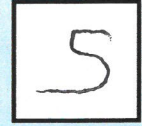
SCHEME

RANK



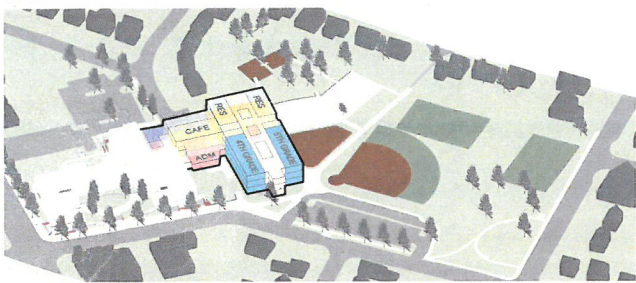
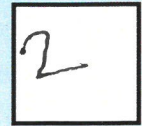
Upper Lower Scheme

Cost Compared to Budget: **-\$3 to -1M**
 Total Student Capacity: **732+ Students**
 Cost per Seat: **\$63-66,000**
 Increased Impervious Area: **+37,300 SF**
 Required Parking (Zoning): **150-165 Spaces**



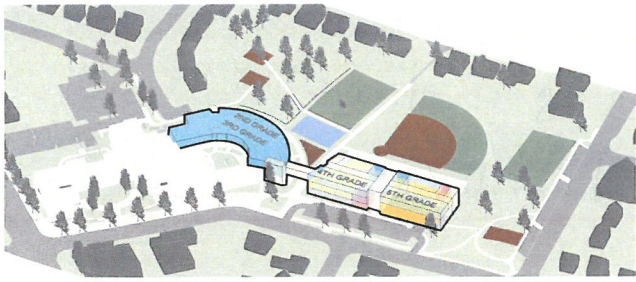
Standalone Scheme

Cost Compared to Budget: **+\$1 to +3M**
 Total Student Capacity: **1,003 Students**
 Cost per Seat: **\$50-52,000**
 Increased Impervious Area: **+62,700 SF**
 Required Parking (Zoning): **204 Spaces**



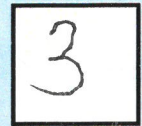
Integrated Scheme

Cost Compared to Budget: **-\$1 to +1M**
 Total Student Capacity: **732 Students**
 Cost per Seat: **\$66-68,000**
 Increased Impervious Area: **+16,800 SF**
 Required Parking (Zoning): **150 Spaces**



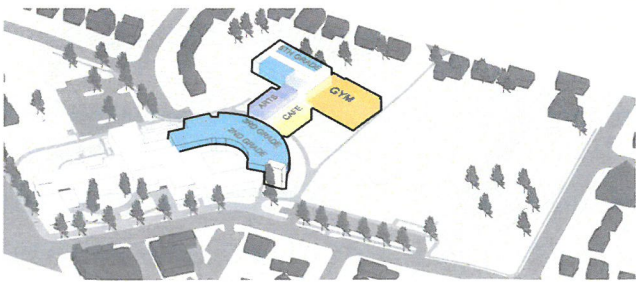
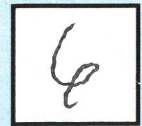
Bridge Scheme

Cost Compared to Budget: **-\$1.5 to +0.5M**
 Total Student Capacity: **732 Students**
 Cost per Seat: **\$65-67,000**
 Increased Impervious Area: **+37,300 SF**
 Required Parking (Zoning): **150 Spaces**



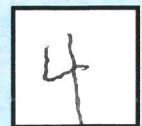
East Scheme

Cost Compared to Budget: **-\$7 to -5M**
 Total Student Capacity: **732 Students**
 Cost per Seat: **\$58-60,000**
 Increased Impervious Area: **+47,800 SF**
 Required Parking (Zoning): **150 Spaces**



North Scheme

Cost Compared to Budget: **-\$0.5 to +1.5M**
 Total Student Capacity: **732 Students**
 Cost per Seat: **\$66-68,000**
 Increased Impervious Area: **+37,300 SF**
 Required Parking (Zoning): **150 Spaces**



Integrated - most compact - keeps
classes together
- keeps green space

Standalone - Best for education of
students w/ additional seats
for county use.

Bridge - Serves students & staff
but lots of transitions

North - keeps kids together.
But long distance to travel.

5/c - too far apart . . .

SCHEME RANKING

APS: New Elementary School at Reed

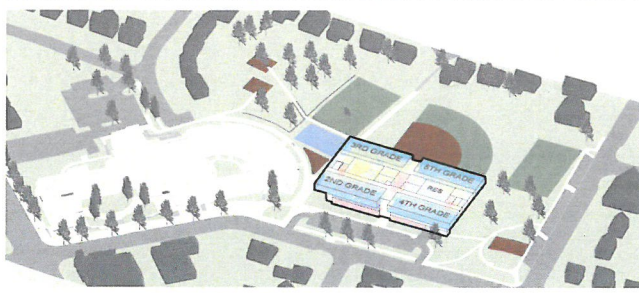
BLPC

Member

Rank from 1 (Favorite)
to 6 (Least Favorite)

SCHEME

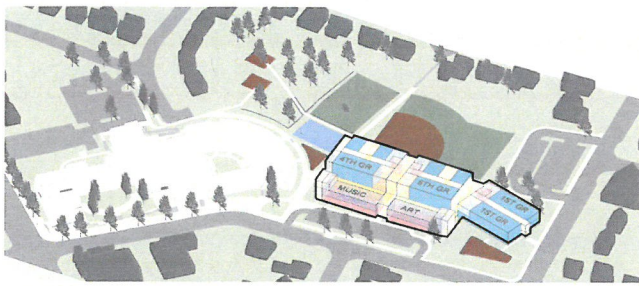
RANK



Upper Lower Scheme

Cost Compared to Budget: **-\$3 to -1M**
 Total Student Capacity: **732+ Students**
 Cost per Seat: **\$63-66,000**
 Increased Impervious Area: **+37,300 SF**
 Required Parking (Zoning): **150-165 Spaces**

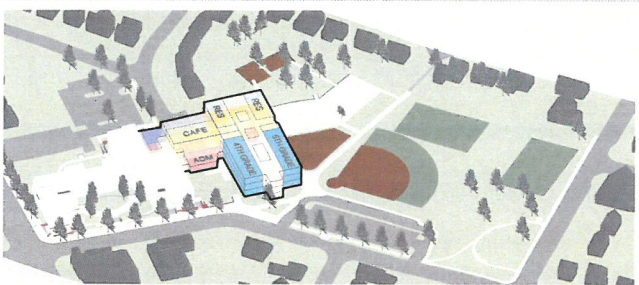
3



Standalone Scheme

Cost Compared to Budget: **+\$1 to +3M**
 Total Student Capacity: **1,003 Students**
 Cost per Seat: **\$50-52,000**
 Increased Impervious Area: **+62,700 SF**
 Required Parking (Zoning): **204 Spaces**

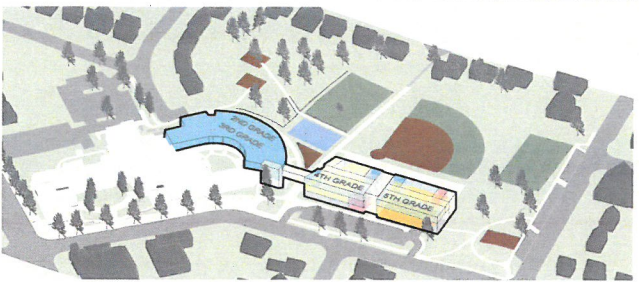
2



Integrated Scheme

Cost Compared to Budget: **-\$1 to +1M**
 Total Student Capacity: **732 Students**
 Cost per Seat: **\$66-68,000**
 Increased Impervious Area: **+16,800 SF**
 Required Parking (Zoning): **150 Spaces**

1



Bridge Scheme

Cost Compared to Budget: **-\$1.5 to +0.5M**
 Total Student Capacity: **732 Students**
 Cost per Seat: **\$65-67,000**
 Increased Impervious Area: **+37,300 SF**
 Required Parking (Zoning): **150 Spaces**

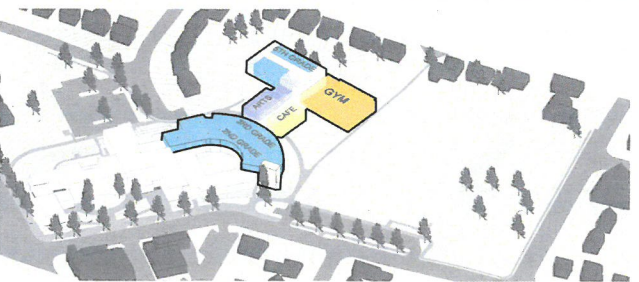
4



East Scheme

Cost Compared to Budget: **-\$7 to -5M**
 Total Student Capacity: **732 Students**
 Cost per Seat: **\$58-60,000**
 Increased Impervious Area: **+47,800 SF**
 Required Parking (Zoning): **150 Spaces**

6



North Scheme

Cost Compared to Budget: **-\$0.5 to +1.5M**
 Total Student Capacity: **732 Students**
 Cost per Seat: **\$66-68,000**
 Increased Impervious Area: **+37,300 SF**
 Required Parking (Zoning): **150 Spaces**

5

SCHEME RANKING

APS: New Elementary School at Reed

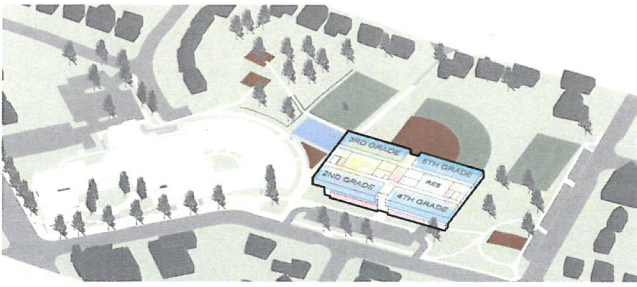
BLPC

Member

Rank from 1 (Favorite)
to 6 (Least Favorite)

SCHEME

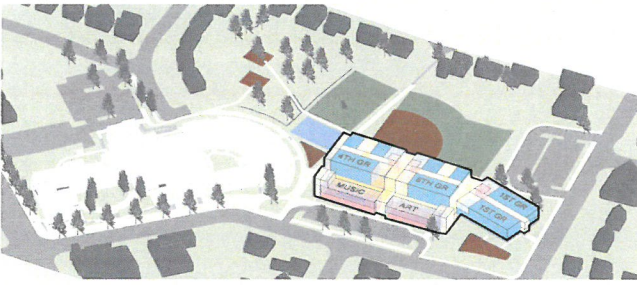
RANK



Upper Lower Scheme

Cost Compared to Budget: **-\$3 to -1M**
 Total Student Capacity: **732+ Students**
 Cost per Seat: **\$63-66,000**
 Increased Impervious Area: **+37,300 SF**
 Required Parking (Zoning): **150-165 Spaces**

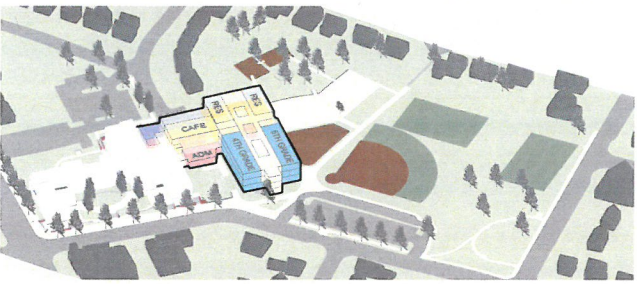
2



Standalone Scheme

Cost Compared to Budget: **+\$1 to +3M**
 Total Student Capacity: **1,003 Students**
 Cost per Seat: **\$50-52,000**
 Increased Impervious Area: **+62,700 SF**
 Required Parking (Zoning): **204 Spaces**

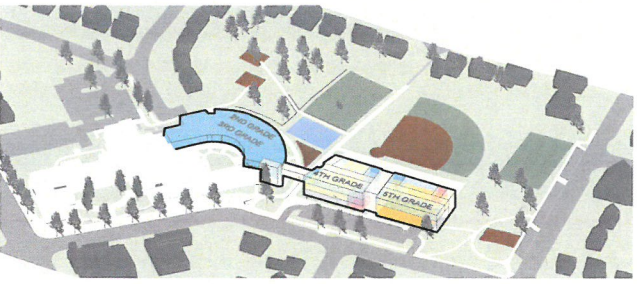
6



Integrated Scheme

Cost Compared to Budget: **-\$1 to +1M**
 Total Student Capacity: **732 Students**
 Cost per Seat: **\$66-68,000**
 Increased Impervious Area: **+16,800 SF**
 Required Parking (Zoning): **150 Spaces**

1



Bridge Scheme

Cost Compared to Budget: **-\$1.5 to +0.5M**
 Total Student Capacity: **732 Students**
 Cost per Seat: **\$65-67,000**
 Increased Impervious Area: **+37,300 SF**
 Required Parking (Zoning): **150 Spaces**

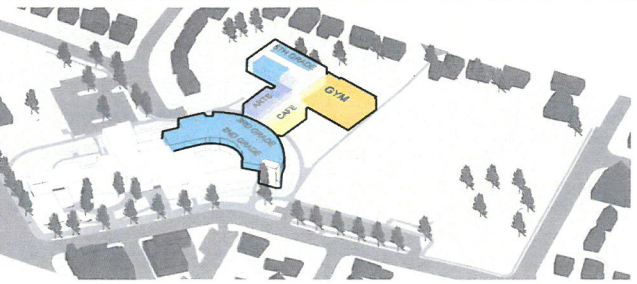
3



East Scheme

Cost Compared to Budget: **-\$7 to -5M**
 Total Student Capacity: **732 Students**
 Cost per Seat: **\$58-60,000**
 Increased Impervious Area: **+47,800 SF**
 Required Parking (Zoning): **150 Spaces**

5



North Scheme

Cost Compared to Budget: **-\$0.5 to +1.5M**
 Total Student Capacity: **732 Students**
 Cost per Seat: **\$66-68,000**
 Increased Impervious Area: **+37,300 SF**
 Required Parking (Zoning): **150 Spaces**

4

① The Integrated Scheme is the best option from instructional, Staff, keep the most green space, does not tear down trees and is the best because it will provide optimal space for learners.

2- Upper Lower Scheme - I do not like this option, but of the remaining 5 it has my highest rank, it is under budget and keeps.

NO Stand alone.

SCHEME RANKING

APS: New Elementary School at Reed

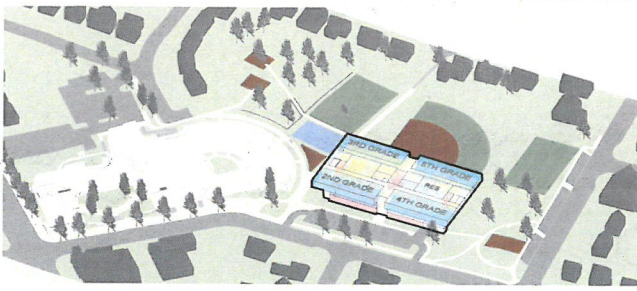
BLPC

Member

Rank from 1 (Favorite) to 6 (Least Favorite)

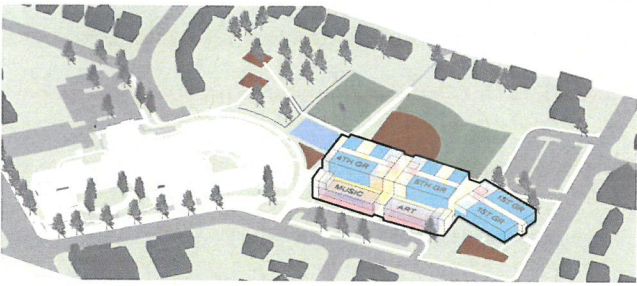
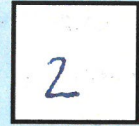
SCHEME

RANK



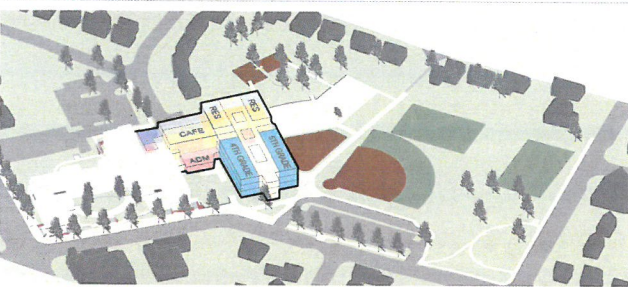
Upper Lower Scheme

Cost Compared to Budget: **-\$3 to -1M**
 Total Student Capacity: **732+ Students**
 Cost per Seat: **\$63-66,000**
 Increased Impervious Area: **+37,300 SF**
 Required Parking (Zoning): **150-165 Spaces**



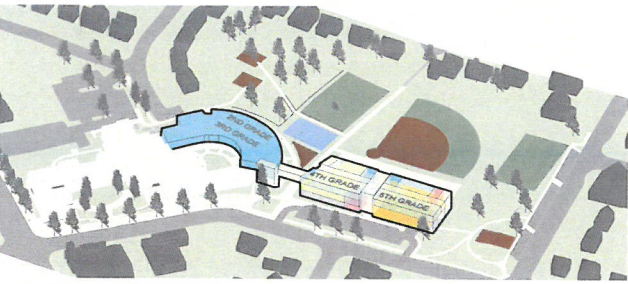
Standalone Scheme

Cost Compared to Budget: **+\$1 to +3M**
 Total Student Capacity: **1,003 Students**
 Cost per Seat: **\$50-52,000**
 Increased Impervious Area: **+62,700 SF**
 Required Parking (Zoning): **204 Spaces**



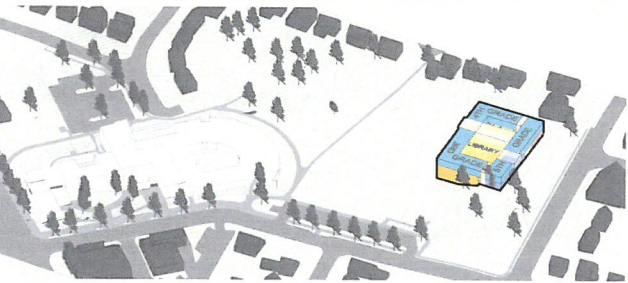
Integrated Scheme

Cost Compared to Budget: **-\$1 to +1M**
 Total Student Capacity: **732 Students**
 Cost per Seat: **\$66-68,000**
 Increased Impervious Area: **+16,800 SF**
 Required Parking (Zoning): **150 Spaces**



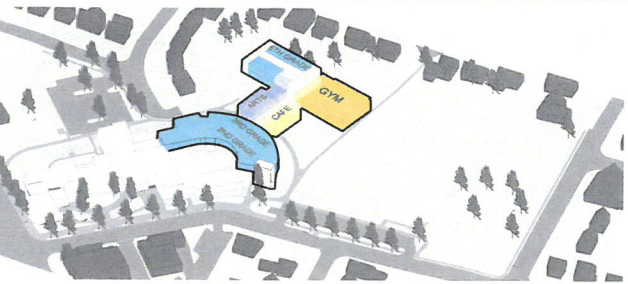
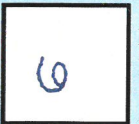
Bridge Scheme

Cost Compared to Budget: **-\$1.5 to +0.5M**
 Total Student Capacity: **732 Students**
 Cost per Seat: **\$65-67,000**
 Increased Impervious Area: **+37,300 SF**
 Required Parking (Zoning): **150 Spaces**



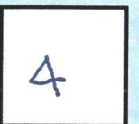
East Scheme

Cost Compared to Budget: **-\$7 to -5M**
 Total Student Capacity: **732 Students**
 Cost per Seat: **\$58-60,000**
 Increased Impervious Area: **+47,800 SF**
 Required Parking (Zoning): **150 Spaces**



North Scheme

Cost Compared to Budget: **-\$0.5 to +1.5M**
 Total Student Capacity: **732 Students**
 Cost per Seat: **\$66-68,000**
 Increased Impervious Area: **+37,300 SF**
 Required Parking (Zoning): **150 Spaces**



#2 Upper-Lower

- like the idea of PK, K, 1 having their own space (gym, cafeteria, etc)
- like the small footprint and maintain green space
- like that it's not too intrusive to the neighborhood

#3 Bridge

- like ~~the~~ the smaller footprint + maintains green space
- not ideal that school is separated and doesn't have ^{separate} ~~spaces~~ Cafeterias + gyms (like upper-lower)

SCHEME RANKING

APS: New Elementary School at Reed

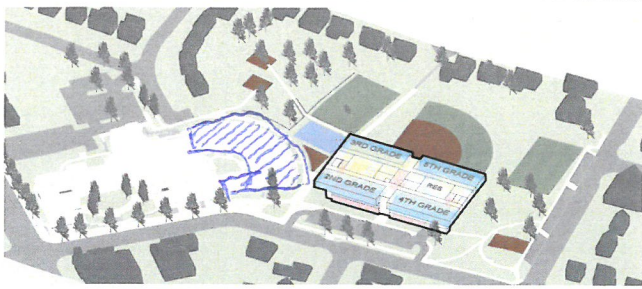
BLPC

Member

Rank from 1 (Favorite)
to 6 (Least Favorite)

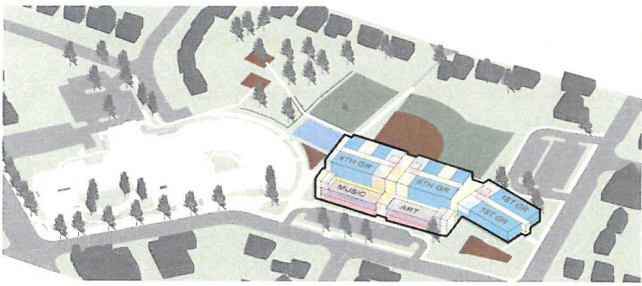
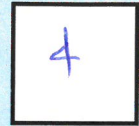
SCHEME

RANK



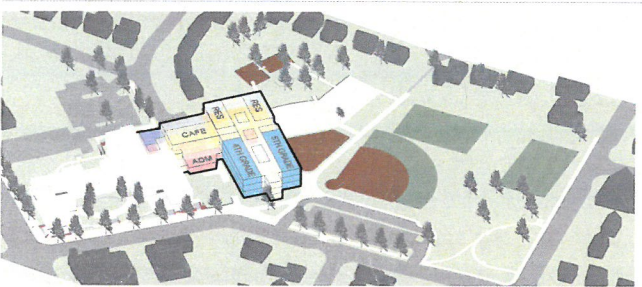
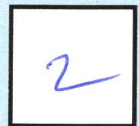
Upper Lower Scheme

Cost Compared to Budget: **-\$3 to -1M**
 Total Student Capacity: **732+ Students**
 Cost per Seat: **\$63-66,000**
 Increased Impervious Area: **+37,300 SF**
 Required Parking (Zoning): **150-165 Spaces**



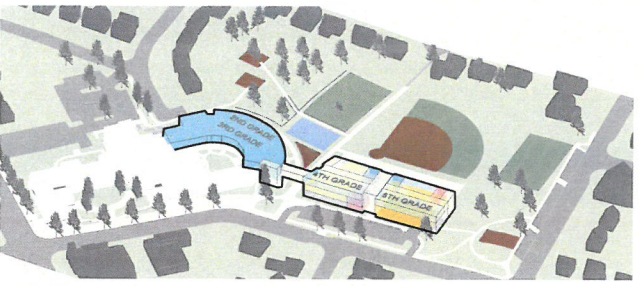
Standalone Scheme

Cost Compared to Budget: **+\$1 to +3M**
 Total Student Capacity: **1,003 Students**
 Cost per Seat: **\$50-52,000**
 Increased Impervious Area: **+62,700 SF**
 Required Parking (Zoning): **204 Spaces**



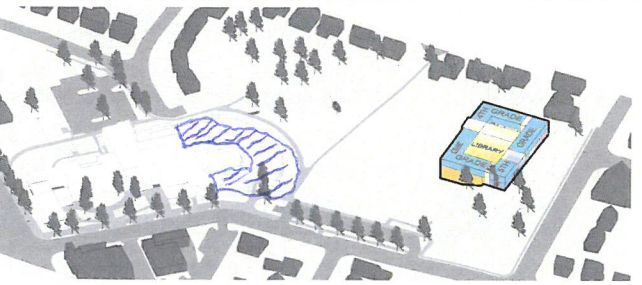
Integrated Scheme

Cost Compared to Budget: **-\$1 to +1M**
 Total Student Capacity: **732 Students**
 Cost per Seat: **\$66-68,000**
 Increased Impervious Area: **+16,800 SF**
 Required Parking (Zoning): **150 Spaces**



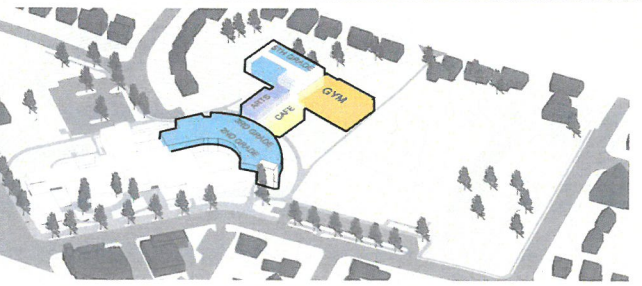
Bridge Scheme

Cost Compared to Budget: **-\$1.5 to +0.5M**
 Total Student Capacity: **732 Students**
 Cost per Seat: **\$65-67,000**
 Increased Impervious Area: **+37,300 SF**
 Required Parking (Zoning): **150 Spaces**



East Scheme

Cost Compared to Budget: **-\$7 to -5M**
 Total Student Capacity: **732 Students**
 Cost per Seat: **\$58-60,000**
 Increased Impervious Area: **+47,800 SF**
 Required Parking (Zoning): **150 Spaces**



North Scheme

Cost Compared to Budget: **-\$0.5 to +1.5M**
 Total Student Capacity: **732 Students**
 Cost per Seat: **\$66-68,000**
 Increased Impervious Area: **+37,300 SF**
 Required Parking (Zoning): **150 Spaces**



Stand alone: Would be even better if a way could be found to ~~take the~~ get rid of that last wing (on the former library site) and put it on top of the rest of the program.
Also - find a better location for that parking lot!

Integrated: • Fixes bad site design mistakes from 9 yrs. ago!
• less disruptive to existing open spaces.
• Good opportunity to make a good civic front door for the school.
• 4 stories will be very popular w/ 4th & 5th graders.

Also: Any schemes that separate the school programs in any way (including the bridge) are not preferred.

SCHEME RANKING

APS: New Elementary School at Reed

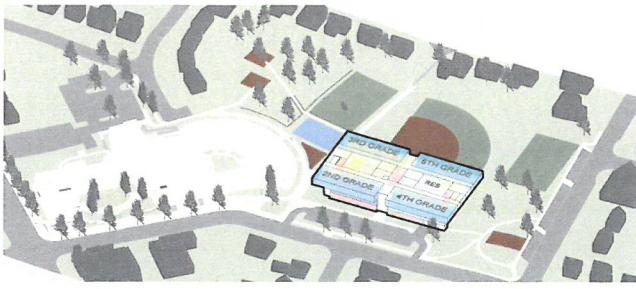
BLPC

Member

Rank from 1 (Favorite)
to 6 (Least Favorite)

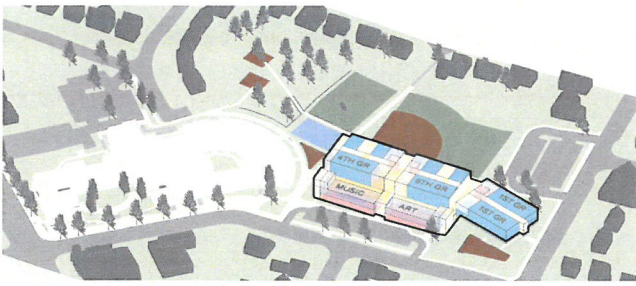
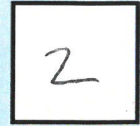
SCHEME

RANK



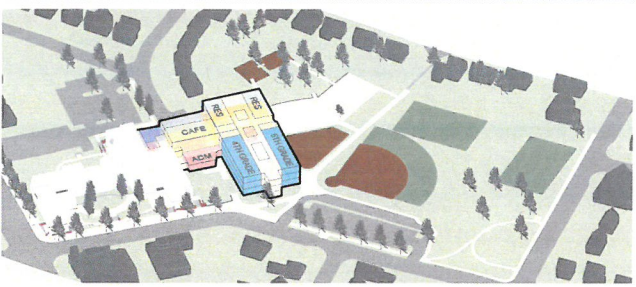
Upper Lower Scheme

Cost Compared to Budget: **-\$3 to -1M**
 Total Student Capacity: **732+ Students**
 Cost per Seat: **\$63-66,000**
 Increased Impervious Area: **+37,300 SF**
 Required Parking (Zoning): **150-165 Spaces**



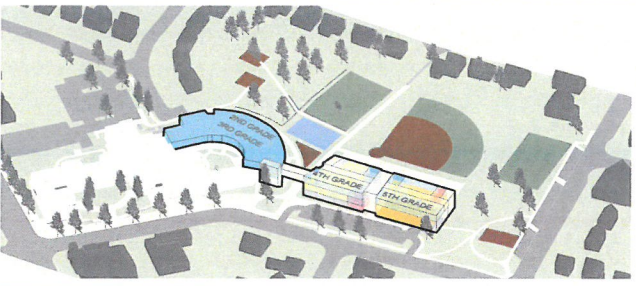
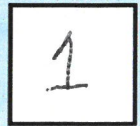
Standalone Scheme

Cost Compared to Budget: **+\$1 to +3M**
 Total Student Capacity: **1,003 Students**
 Cost per Seat: **\$50-52,000**
 Increased Impervious Area: **+62,700 SF**
 Required Parking (Zoning): **204 Spaces**



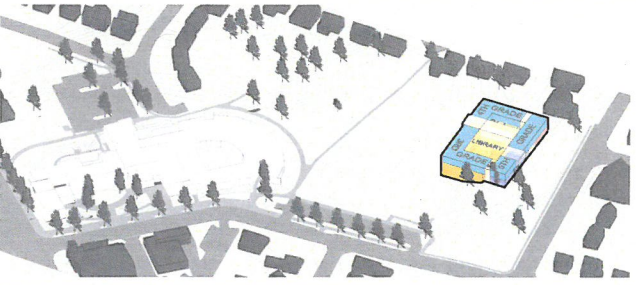
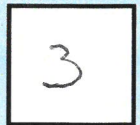
Integrated Scheme

Cost Compared to Budget: **-\$1 to +1M**
 Total Student Capacity: **732 Students**
 Cost per Seat: **\$66-68,000**
 Increased Impervious Area: **+16,800 SF**
 Required Parking (Zoning): **150 Spaces**



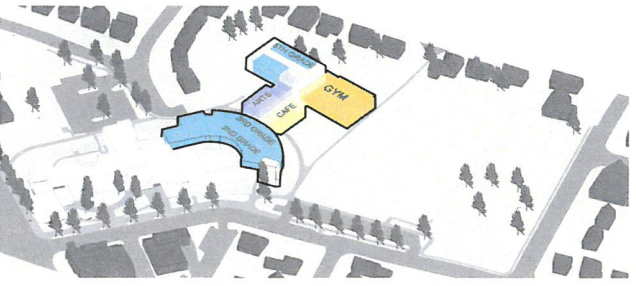
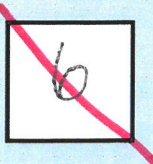
Bridge Scheme

Cost Compared to Budget: **-\$1.5 to +0.5M**
 Total Student Capacity: **732 Students**
 Cost per Seat: **\$65-67,000**
 Increased Impervious Area: **+37,300 SF**
 Required Parking (Zoning): **150 Spaces**



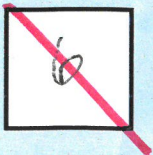
East Scheme

Cost Compared to Budget: **-\$7 to -5M**
 Total Student Capacity: **732 Students**
 Cost per Seat: **\$58-60,000**
 Increased Impervious Area: **+47,800 SF**
 Required Parking (Zoning): **150 Spaces**



North Scheme

Cost Compared to Budget: **-\$0.5 to +1.5M**
 Total Student Capacity: **732 Students**
 Cost per Seat: **\$66-68,000**
 Increased Impervious Area: **+37,300 SF**
 Required Parking (Zoning): **150 Spaces**



2 - Upper lower - like the extra space on 2nd fl. vs.

trailers some day

- why is U/L only \$3M lowest savings vs. East?

3 - Bridge - Don't like to reuse new 2nd floor
on existing building due to non optimum layout

SCHEME RANKING

APS: New Elementary School at Reed

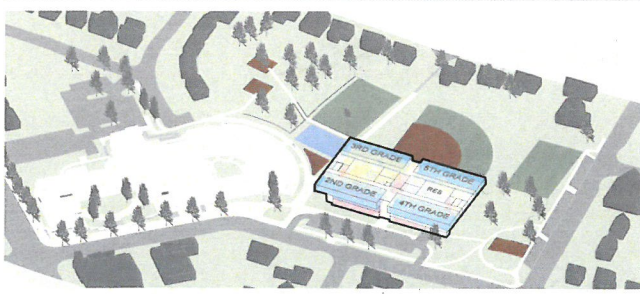
BLPC

Member

Rank from 1 (Favorite) to 6 (Least Favorite)

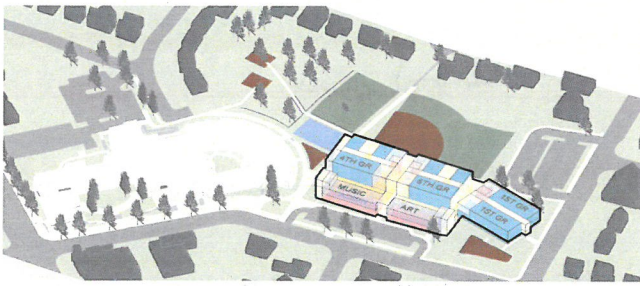
SCHEME

RANK



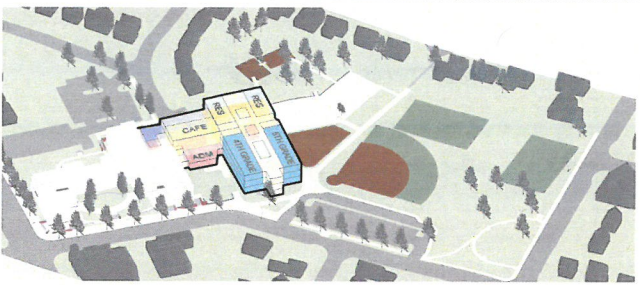
Upper Lower Scheme

Cost Compared to Budget: **-\$3 to -1M**
 Total Student Capacity: **732+ Students**
 Cost per Seat: **\$63-66,000**
 Increased Impervious Area: **+37,300 SF**
 Required Parking (Zoning): **150-165 Spaces**



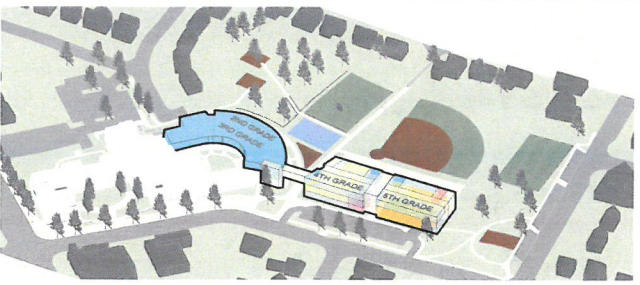
Standalone Scheme

Cost Compared to Budget: **+\$1 to +3M**
 Total Student Capacity: **1,003 Students**
 Cost per Seat: **\$50-52,000**
 Increased Impervious Area: **+62,700 SF**
 Required Parking (Zoning): **204 Spaces**



Integrated Scheme

Cost Compared to Budget: **-\$1 to +1M**
 Total Student Capacity: **732 Students**
 Cost per Seat: **\$66-68,000**
 Increased Impervious Area: **+16,800 SF**
 Required Parking (Zoning): **150 Spaces**



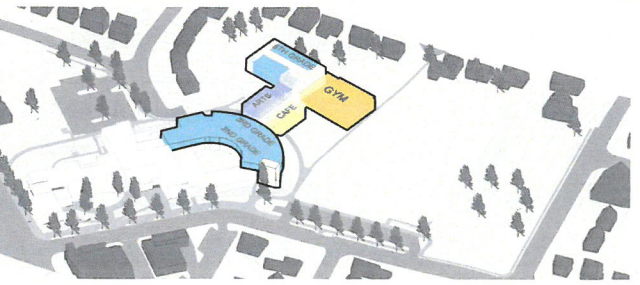
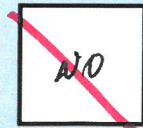
Bridge Scheme

Cost Compared to Budget: **-\$1.5 to +0.5M**
 Total Student Capacity: **732 Students**
 Cost per Seat: **\$65-67,000**
 Increased Impervious Area: **+37,300 SF**
 Required Parking (Zoning): **150 Spaces**



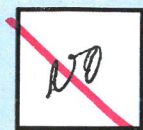
East Scheme

Cost Compared to Budget: **-\$7 to -5M**
 Total Student Capacity: **732 Students**
 Cost per Seat: **\$58-60,000**
 Increased Impervious Area: **+47,800 SF**
 Required Parking (Zoning): **150 Spaces**



North Scheme

Cost Compared to Budget: **-\$0.5 to +1.5M**
 Total Student Capacity: **732 Students**
 Cost per Seat: **\$66-68,000**
 Increased Impervious Area: **+37,300 SF**
 Required Parking (Zoning): **150 Spaces**



Why I voted as I did :

① Any option that retains the existing circular building is short sighted. It is construction designed specifically for children who are younger than elementary school students.

We will be sorry to retain a suboptimal structure that is not appropriate for students as a quality learning environment.

② I am opposed to the standalone option because the community and the specific site can not sustain that much construction or that many students + teacher + staff. The community would be even overwhelmed.