

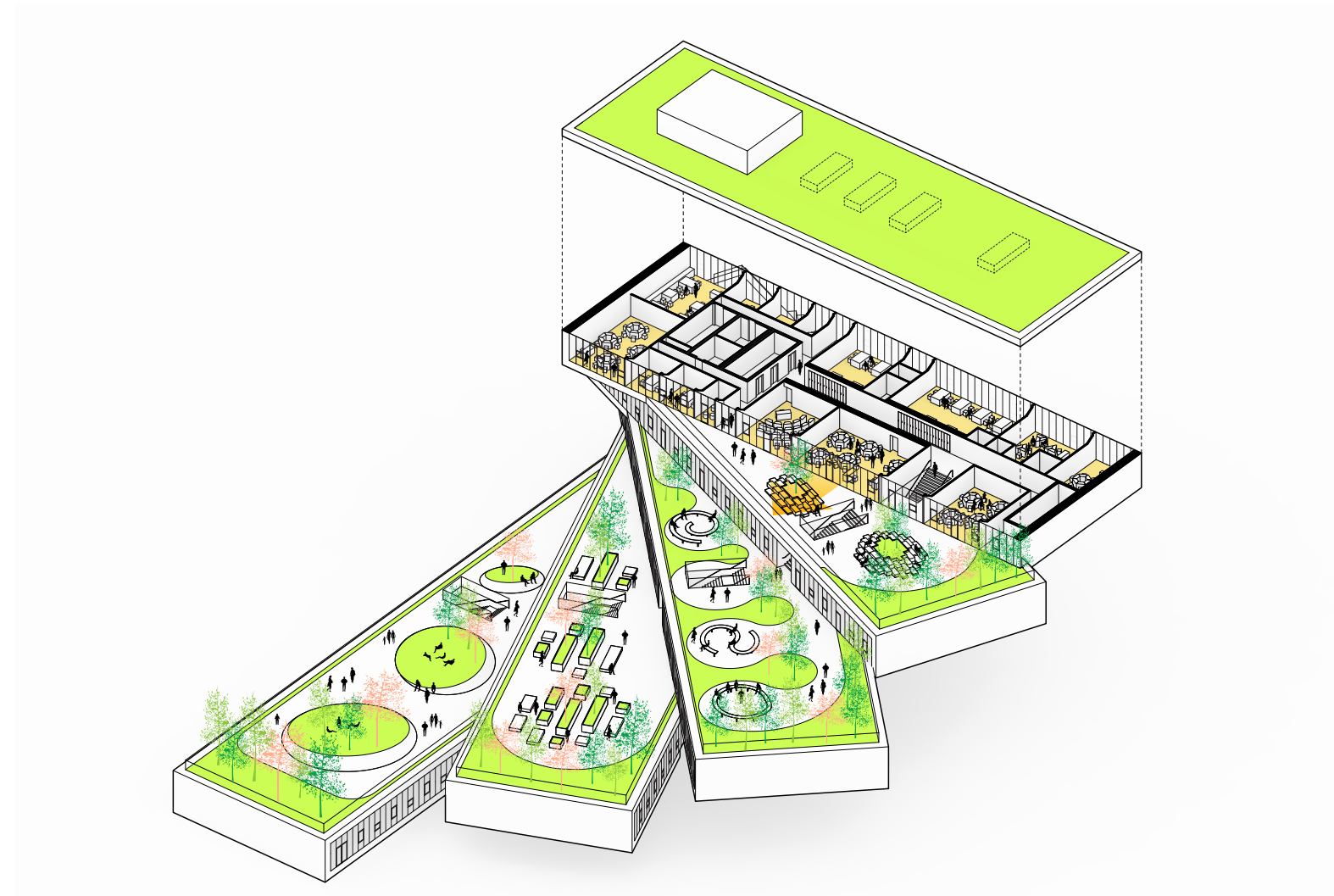
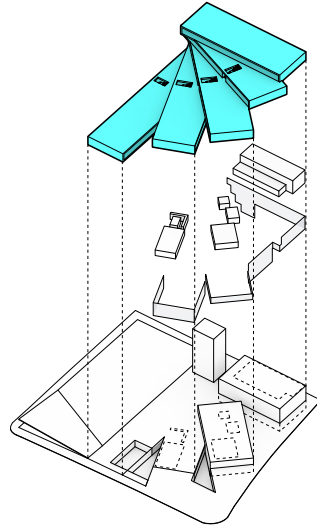
MASSING / ARTICULATION

A simple material palette is used to emphasize the overall organization of the building and to identify the volumetric spaces and communal rooms throughout the building.

1. SPACE PROGRAMMING	5
2. SITE	13
3. CONCEPT ..	19
4. BUILDING DESIGN	23
5. MASSING / ARTICULATION	45
6. OUTDOOR LEARNING SPACES	65
7. COST ESTIMATE	75
8. BUILDING SYSTEMS NARRATIVES	81

CLASSROOM BARS

VOLUME ARTICULATION



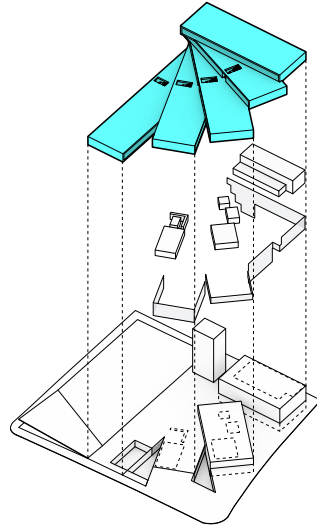
CLASSROOM BARS

The classroom bar is the basic organizational unit of the school. It consists of a central corridor with classrooms on either side. The interior construction will be made of lightweight partitions which can be easily removed in the future to allow for adaptive modifications. Informal learning and small gathering spaces are located directly off the main corridor. Each classroom bar has direct access to an outdoor terrace, providing opportunities for outdoor instructional space for individuals, groups, or entire classes. Each terrace will provide a unique landscape and vantage point.

CORRIDORS
VIEW OF A TYPICAL CORRIDOR

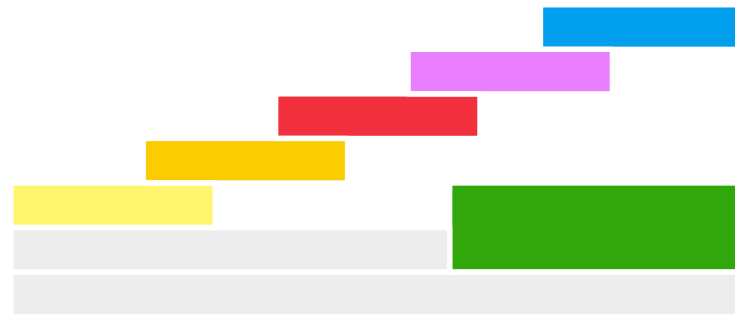


CORRIDORS
COLOR SCHEME AND MATERIALS



CLASSROOM BARS

The classroom bar is the basic organizational unit of the school. It consists of a central corridor with classrooms on either side. The interior construction will be made of lightweight partitions which can be easily removed in the future to allow for adaptive modifications.



COLOR CODED LEVELS

Each classroom bar has unique a color, allowing for intuitive way-finding and providing a dynamic social atmosphere.



PAINTED GYPSUM WALL / CEILING TILES

Extent: Corridor walls and ceilings



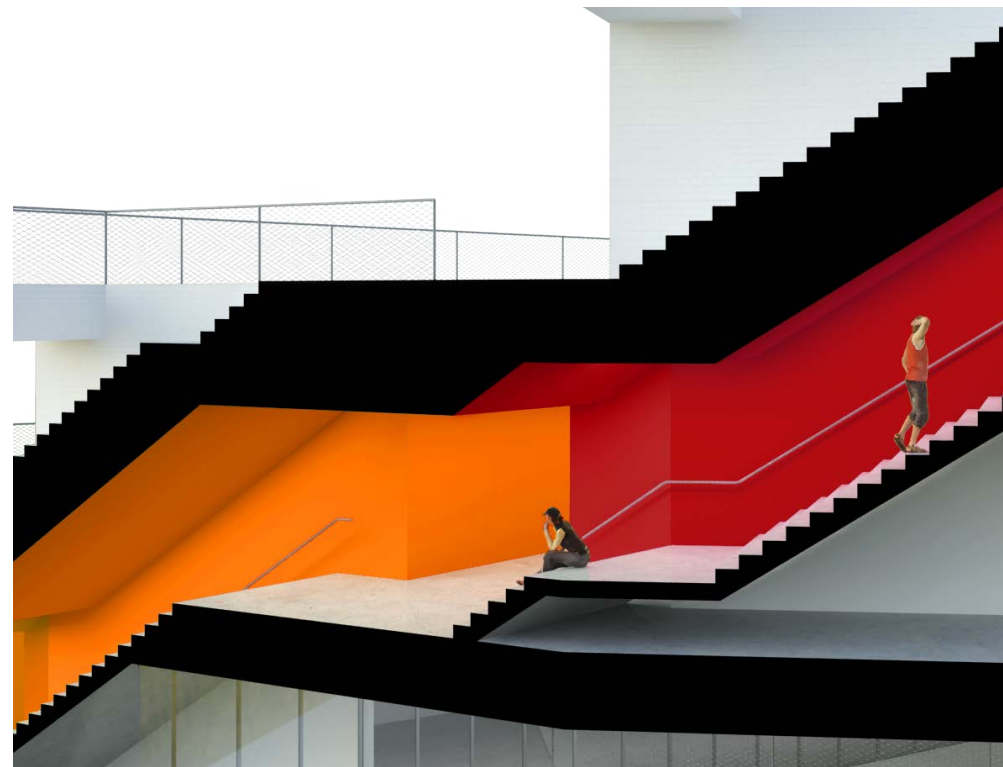
STAINLESS STEEL

Extent: Handrail at central stairs



SEALED CONCRETE / PRECAST

Extent: Sealed concrete floors in corridors, precast concrete central stairs to match



SECTION PERSPECTIVE OF CENTRAL STAIRS



THE MOUNTAIN COPENHAGEN, DENMARK



M HOUSE COPENHAGEN, DENMARK

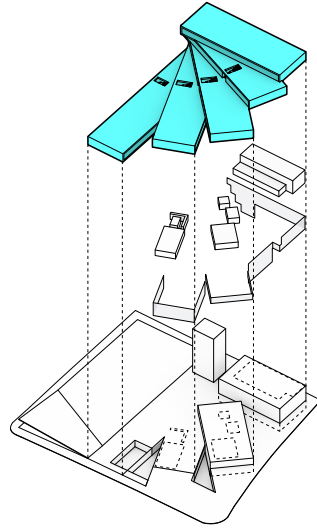
CLASSROOMS

VIEW OF A TYPICAL CLASSROOM



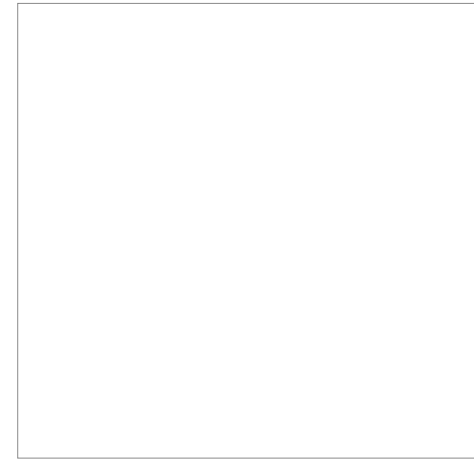
CLASSROOMS

FURNITURE CONFIGURATIONS AND MATERIALS



CLASSROOMS

The majority of classrooms have a direct view to an outdoor terrace, providing ample daylight and opportunities for outdoor learning. The classroom is designed to allow for flexible arrangements for many teaching scenarios.



WHITE GYPSUM WALL

Extent: Interior walls
Finish: White



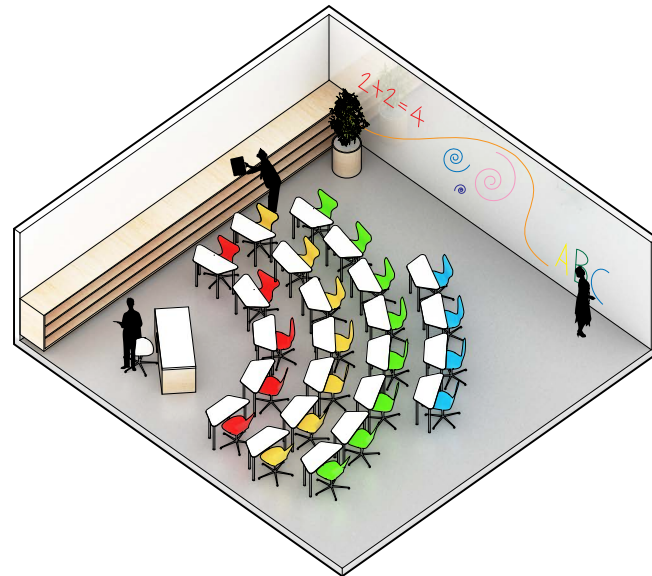
PLYWOOD

Extent: Cabinets and millwork

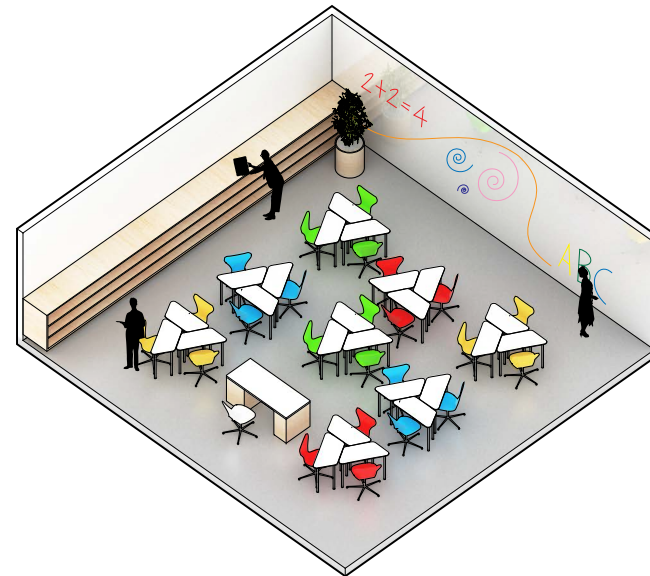


INSULATED GLASS UNIT

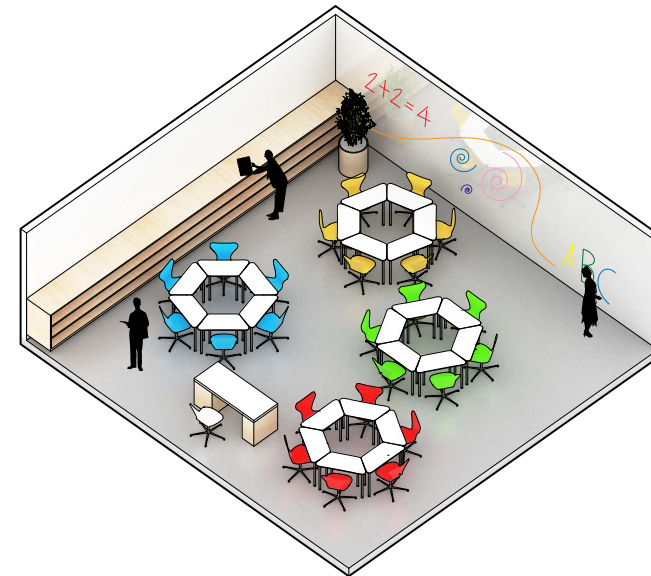
Extent: Glass wall on the terrace side



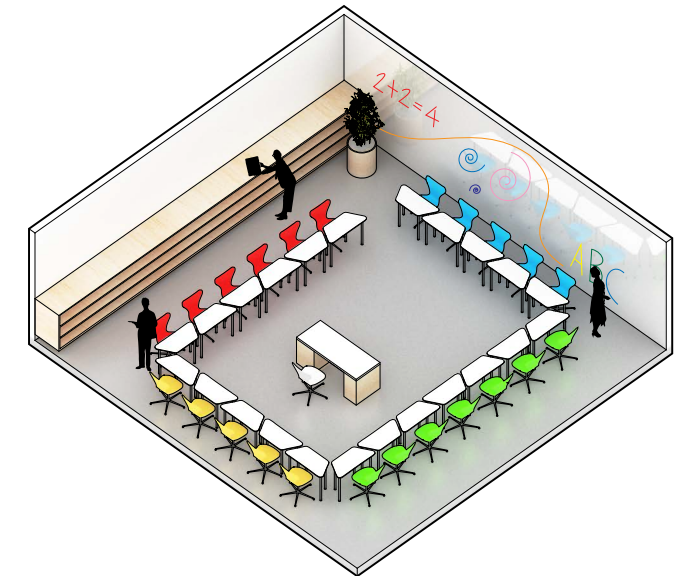
LECTURE



SMALL GROUP ACTIVITY



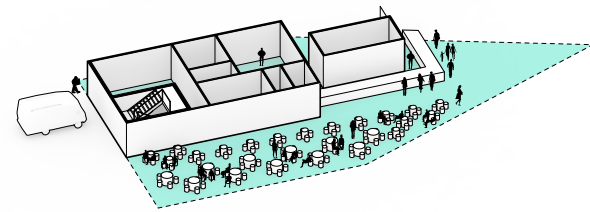
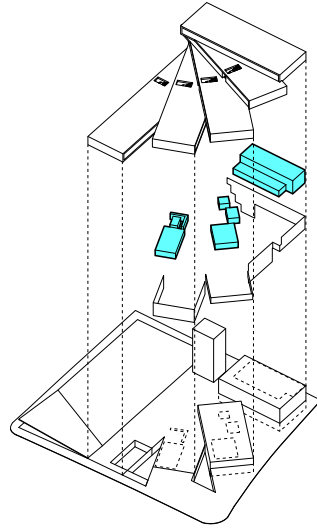
SMALL GROUP DISCUSSION



LARGE DISCUSSION

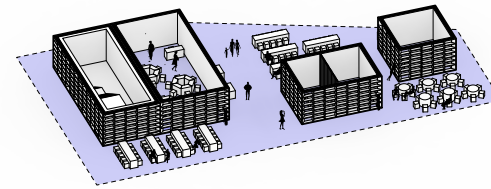
IN-BETWEEN SPACES

VOLUME ARTICULATION



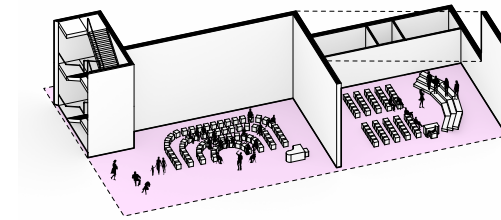
CAFETERIA

The cafeteria is organized around an open plan for the dining area and enclosed spaces for the kitchen and food preparation areas. The dining room receives plenty of daylight and views to the exterior and is easily accessed from the first floor lobby. The kitchen has direct access to the main service entrance for deliveries and waste disposal.



LIBRARY

The library will have a variety of open spaces for study and quiet gatherings, as well as enclosed rooms that will house offices and flexible classrooms. Each of the enclosed rooms will be surrounded by book shelving.



MUSIC REHEARSAL ROOMS

The instrumental and choir rehearsal rooms will be partially double-height spaces to accommodate the acoustic needs of these programs. Both rooms have an exterior glass wall which will bring in plenty of daylight and views out from these spaces.

CAFETERIA
VIEW OF SERVING COUNTER

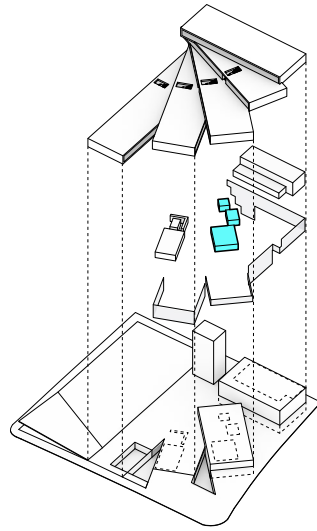


MUSIC REHEARSAL ROOMS
VIEW OF CHOIR ROOM



LIBRARY
VIEW OF STUDY LOUNGE





LIBRARY

The library will have a variety of open spaces for study and quiet gatherings, as well as enclosed rooms that will house offices and flexible classrooms. Each of the enclosed rooms will be surrounded by book shelving.



CARPET

Extent: Floor of library



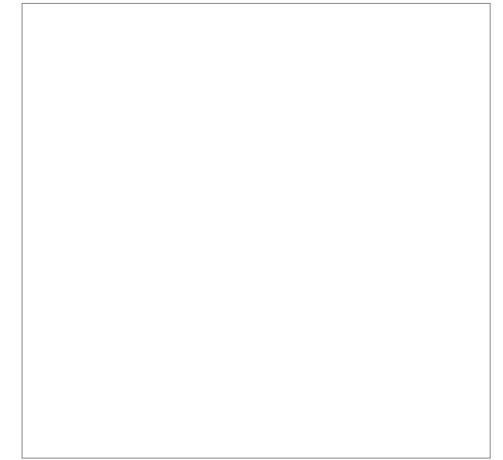
TIN CEILING

Extent: Interior ceiling of classroom and conference rooms
Finish: Eggshell white paint



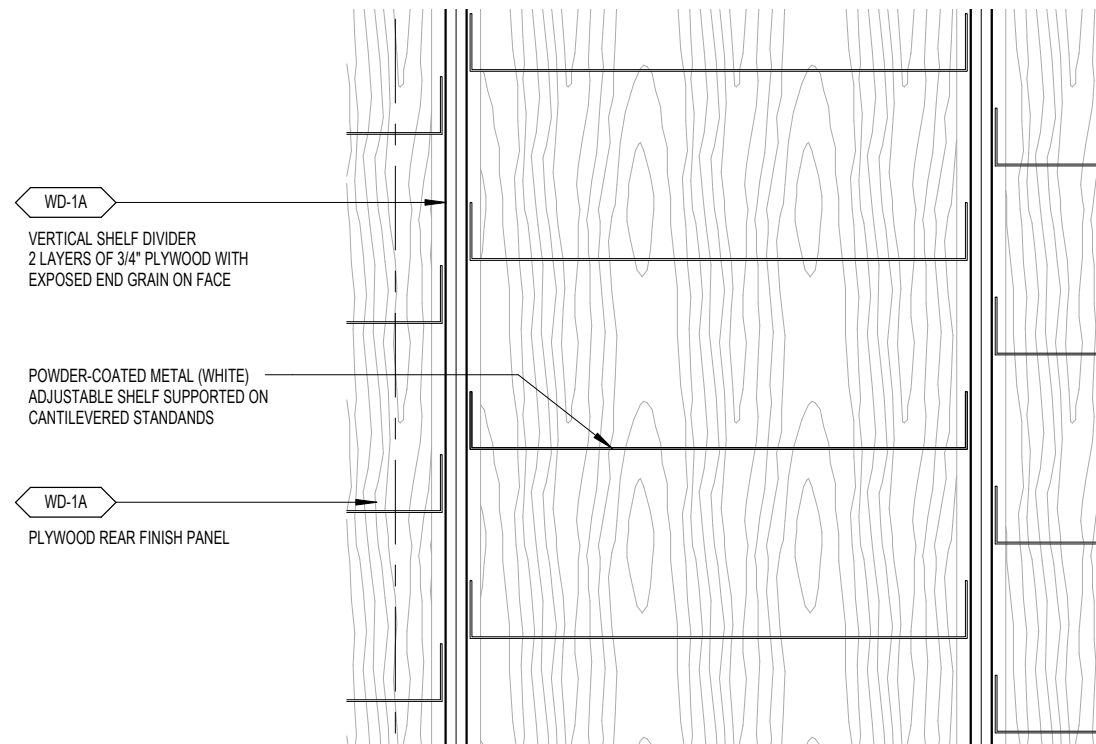
PLYWOOD

Extent: Millwork

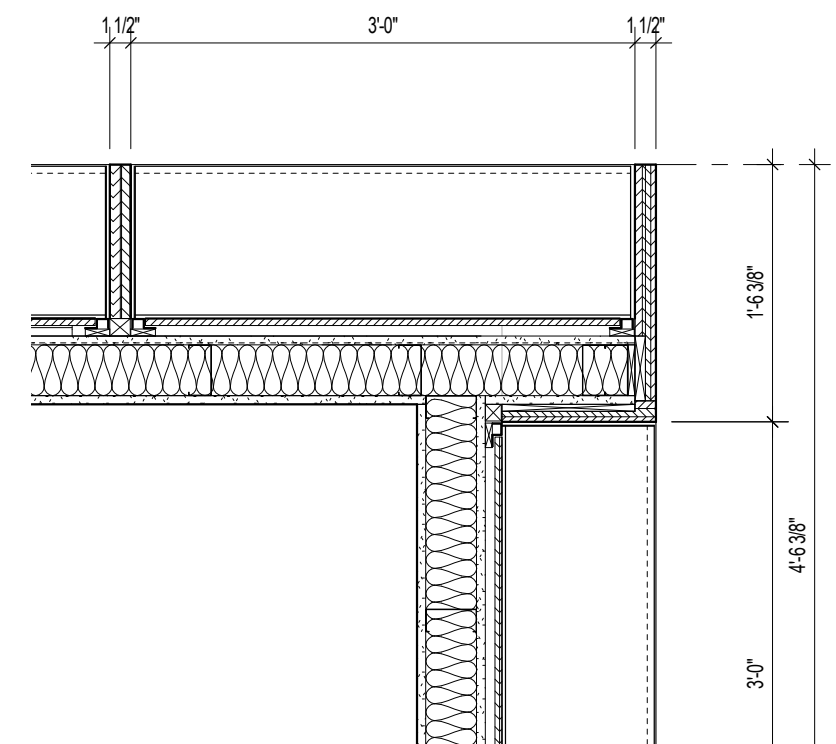


WHITE POWDER-COATED METAL

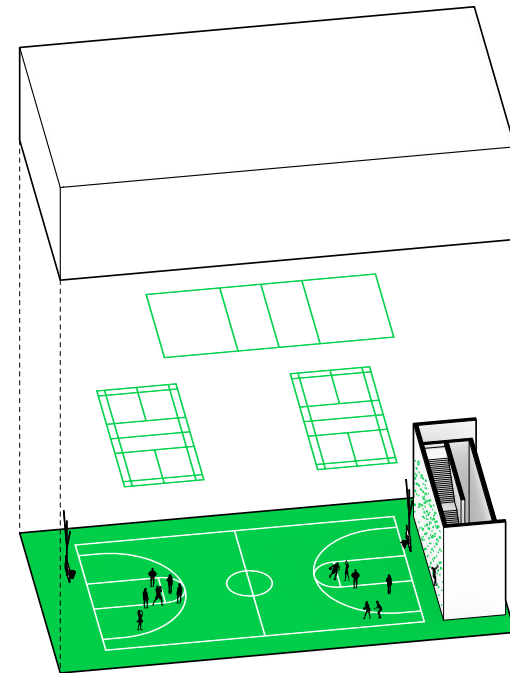
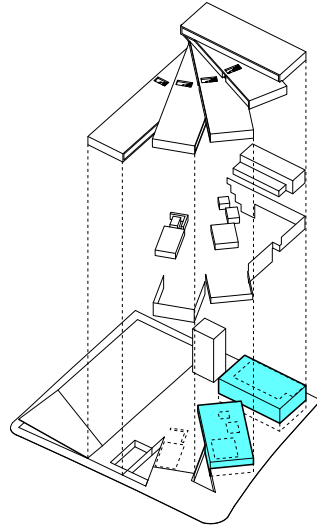
Extent: Adjustable library shelves



SHELVING - DETAIL ELEVATION

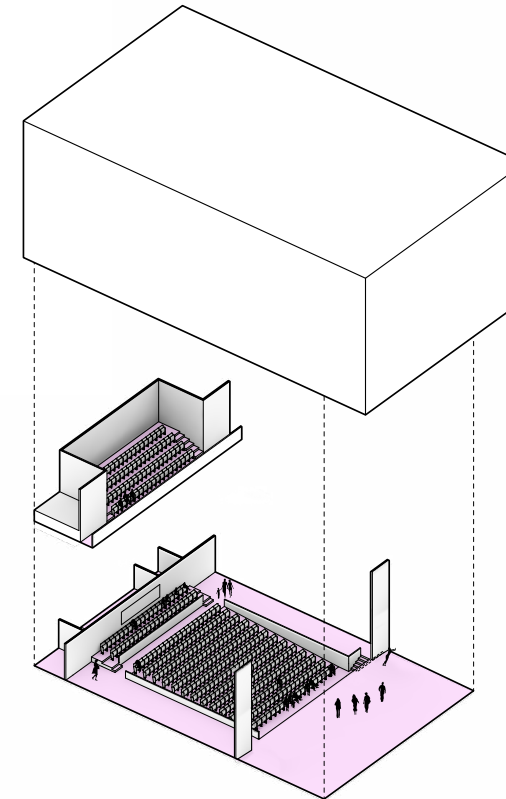


SHELVING - DETAIL PLAN



GYM BOX

The gymnasium is a double height space with a large clerestory glass wall surrounding it to bring in lots of natural daylight. The gym will accommodate a variety of activities and can be divided into two zones for separate instruction / activity. The gym will contain a main basketball court and 4 side practice basketball hoops and has access to one of the courtyards for outdoor physical activities.



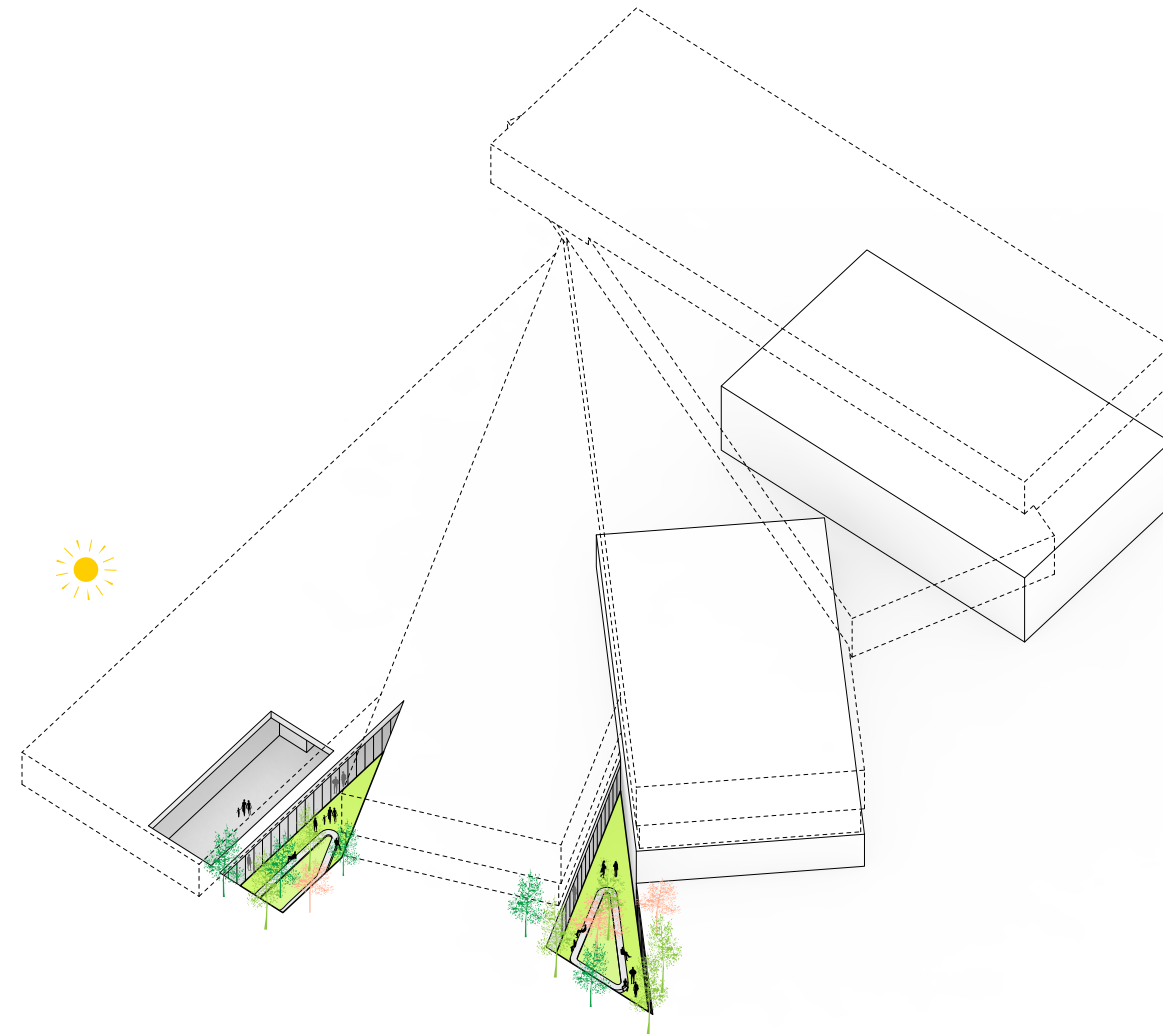
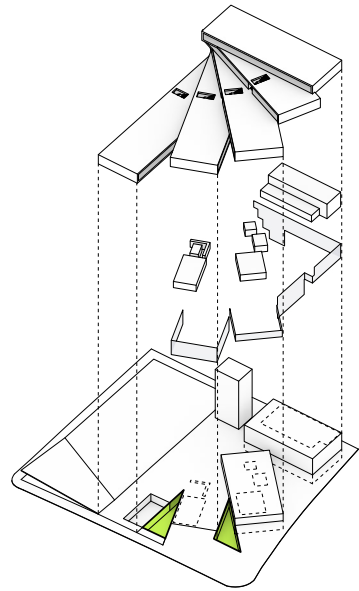
THEATER BOX

The theater has seating for 400 in a courtyard configuration. The balcony level branches out to create a greater sense of intimacy between audience and performers on stage. The theater is designed to accommodate both musical and theatrical productions with a sliding proscenium wall that can open up the stage to the full width of the space.



THEATER
INTERIOR PERSPECTIVE FROM BALCONY





COURTYARDS

Two courtyards are created at the ground level and are accessed from the auxiliary gym and the main gymnasium. They bring natural daylight into these spaces and to adjacent classrooms that face onto them and provide protected outdoor space for students to play.

COURTYARD 2
EXTERIOR PERSPECTIVE



