



DEPARTMENT OF DESIGN & CONSTRUCTION

2770 South Taylor Street • Arlington, VA 22206 • Phone: (703) 228-6613 Fax: (703) 671-2959

December 8, 2017

Subject: New Reed Elementary School Site Tour

Date: December 10, 2017

Tour 1: 10 am

Tour 2: 11am

Agenda:

1. Meet in front of the Library and sign in
2. Tour site starting at N McKinley Road, counter clockwise to Washington Blvd.
3. Discuss site attributes and characteristics
 - a. Topography
 - b. Landscape and vegetation
 - c. Existing site developments
 - d. Site access & parking
 - e. Underground utilities
4. Questions?



TOUR START POINT

46

26

County Champion Tree

County owed, old Library Site

Approximate location of storm and sanitary lines

Pedestrian Sidewalk

Site Boundary

Parkhurst Park

20th St N

19th Rd N

N Nottingham St

N Madison St

19th St N

19th St N

18th Rd N

N Lexington St

Patrick Henry Dr

18th St N

N Kenilworth St

18th St N

18th St N

18th St N

Washington Blvd

N McKinley Rd

18th St N

N Longfellow St

18th St N

N Lexington St

18th St N

18th St N

18th St N

18th St N

18th St N

18th St N

18th St N

18th St N

18th St N

18th St N

18th St N

18th St N

18th St N

18th St N

18th St N

18th St N

18th St N

18th St N

18th St N

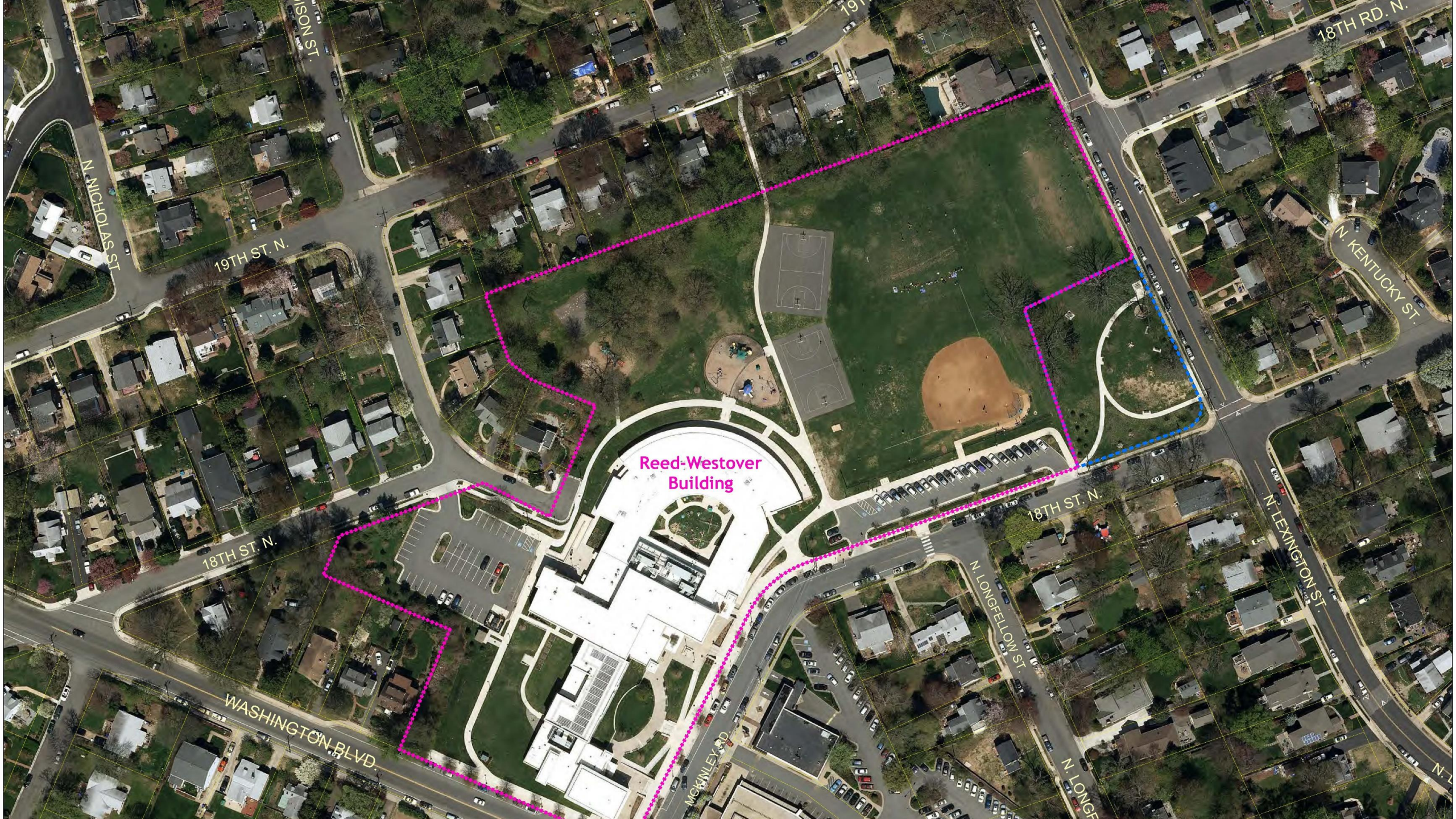
16th St N

Washington Blvd

N McKinley Rd

16th St N

Site Overview



Reed-Westover
Building

N NICHOLAS ST

19TH ST. N.

18TH ST. N.

WASHINGTON BLVD

MCKINLEY RD

N LONGELLOW ST

N LONGE

18TH ST. N.

N LEXINGTON ST

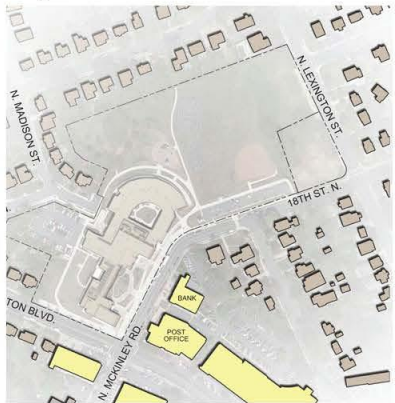
N KENTUCKY ST

18TH RD. N.

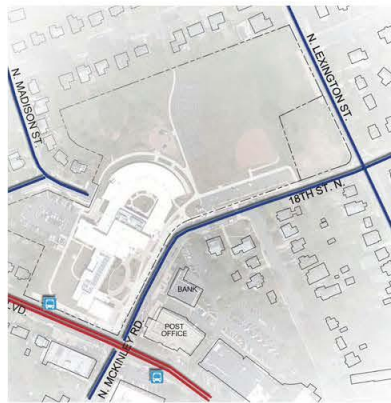
Site Analysis



Adjacent Context



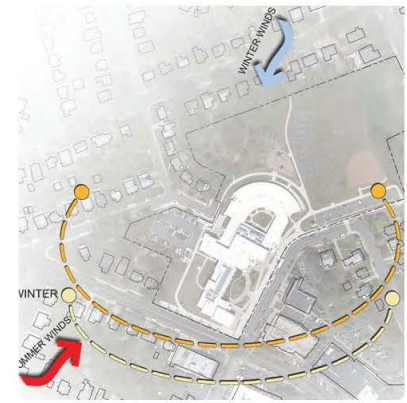
Vehicular Circulation



Site Circulation



Environmental/Climate



	DAYS OF SUNSHINE 101 DAYS 39.7 IN.
	PARTIALLY SUNNY 107 DAYS
	PRECIPITATION 114 DAYS 39.7 IN.
	TEMPERATURE 67 F. 59 L.