



APS 3-5 YEAR ACTION PLAN

Arlington Community Facilities Study

A resource and facilities plan for our future

Long-Term Planning Process: The 2015 Community Facilities Study identified challenges facing Arlington County, including scarcity of land for public facilities, changing demographics, and a shrinking commercial tax base. The study recommended a County/APS Long Range Term Planning Process to address these needs.



Arlington Tech is a new all day, full-time high school program offered at the Career Center. The program is designed to provide hands-on, project-based, and work-based learning experiences. College credits may be earned through dual enrolled academic and CTE courses.



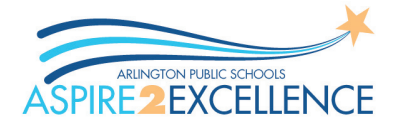
Personalized learning empowers students to leverage technology and support learning through flexibility and choice while ensuring instruction and outcomes are connected to each student's unique talents, skills and interests.



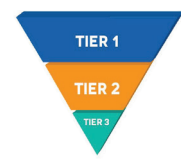
Drew Model School: As APS prepares to move the Montessori program in 2019, this is an opportunity to collaborate with the neighborhood and other stakeholders to develop a shared vision for the future of Drew Model School.



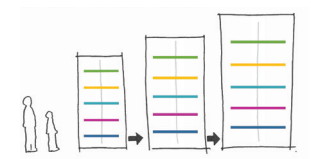
High School Redesign: The VA Board of Education is currently redesigning the high school experience and graduation requirements. Once we receive these new guidelines, APS will hold community conversations to discuss how to incorporate the changes here in Arlington.



Aspire2Excellence provides APS students and families with pertinent information as they make course selections and plan for the future.



Arlington Tiered System of Support (ATSS) helps each student reach success in academics, behavior and social emotional well-being through a district-wide framework that provides additional resources and supports.



The **Whole Child** framework defines the APS vision to develop a sustainable approach and ensure that each student is healthy, safe, supported, engaged, and academically challenged.

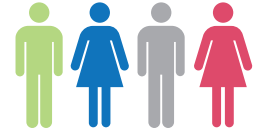
MORE Seats for Students

More Seats for More Students is a focus of the APS Capital Improvement Plan, engaging the community in key decisions to address enrollment growth in an open and transparent manner.



Family and community engagement

Family and Community Engagement (FACE) is a strategy to improve student learning that depends on schools, families and community groups working together to ensure students have the support they need to succeed in school and in life.



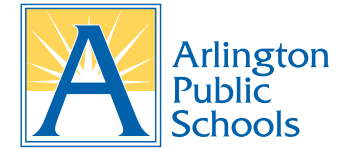
APS Leadership includes administrators, staff, School Board members, PTAs and APS advisory committees.

How Can We Participate?

- Here are some ways for parents, families and community members to participate:
- Engage in community conversations
 - Volunteer or Partner with APS
- For more information go to www.apsva.us/plans



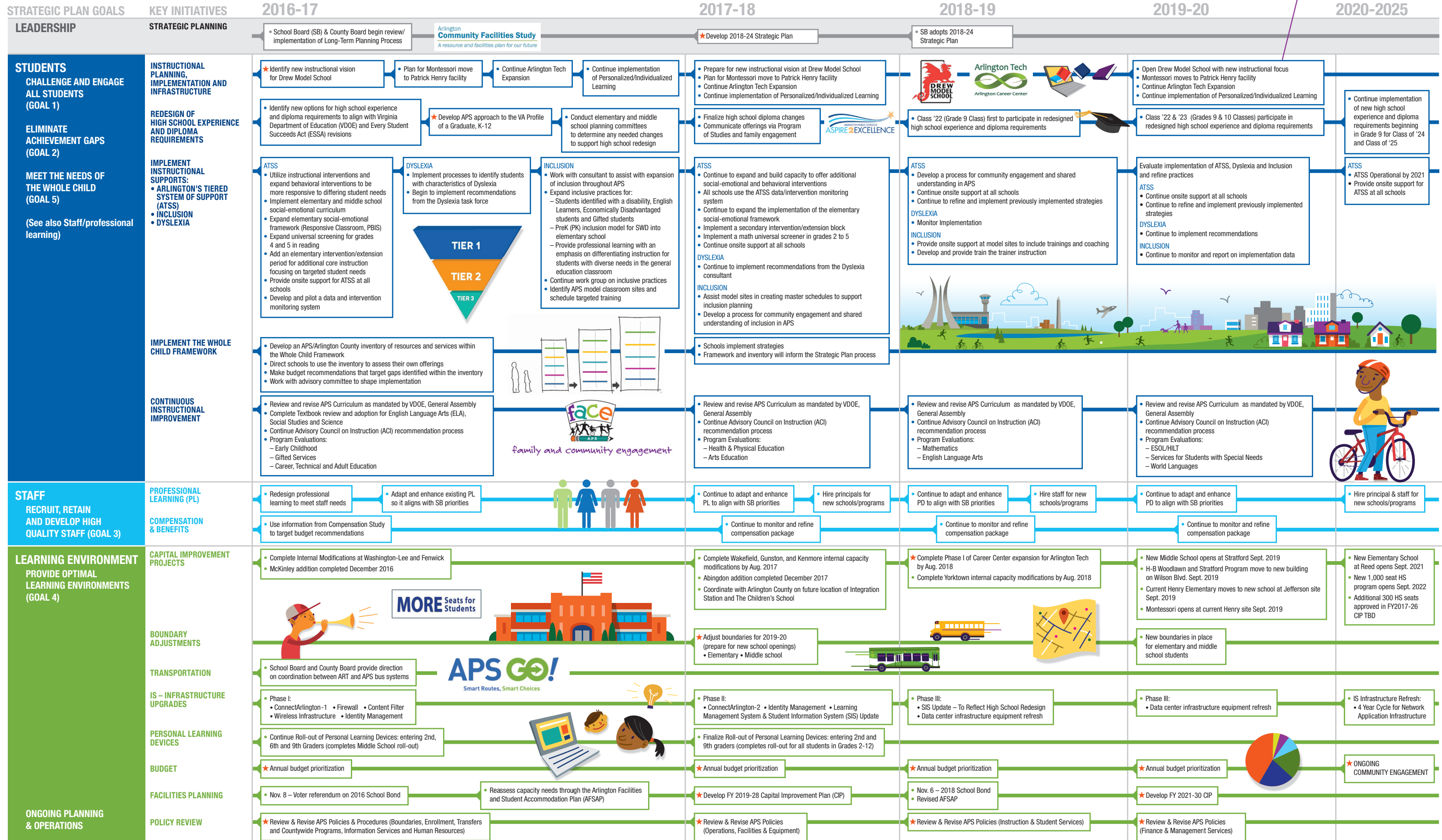
APS is working tirelessly, both inside the classroom and behind the scenes, to create the best learning experiences for our students. Shaping the future for our children—now more than ever—requires a continuous, collaborative and coordinated effort from across our community. As we continue to be faced with strong enrollment growth, shifting demographics, and evolving state education requirements, the complex and overlapping nature of our development initiatives keeps expanding. This Action Plan charts the key initiatives and activities planned for APS, and is intended to provide all of us with a clear picture of how our family, staff and community can play an important role.



For information about any of these plans, please go to www.apsva.us/plans

Published September 6, 2016
 This plan presents a snapshot of our work as of the publication date. The plan will continue to evolve and will be updated periodically.
 For more information on upcoming deliberations and projects, and to learn how to participate, check the website at www.apsva.us/plans

WHAT IS THE PLAN AND HOW ARE WE GETTING THERE?



★ The chart indicates community engagement processes that are expected to be conducted as of Sept. 2016. However, APS expects that additional issues will evolve and arise and community engagement processes will be added for those topics as needed to formulate plans as we move forward.