

SEPTEMBER 21, 2016

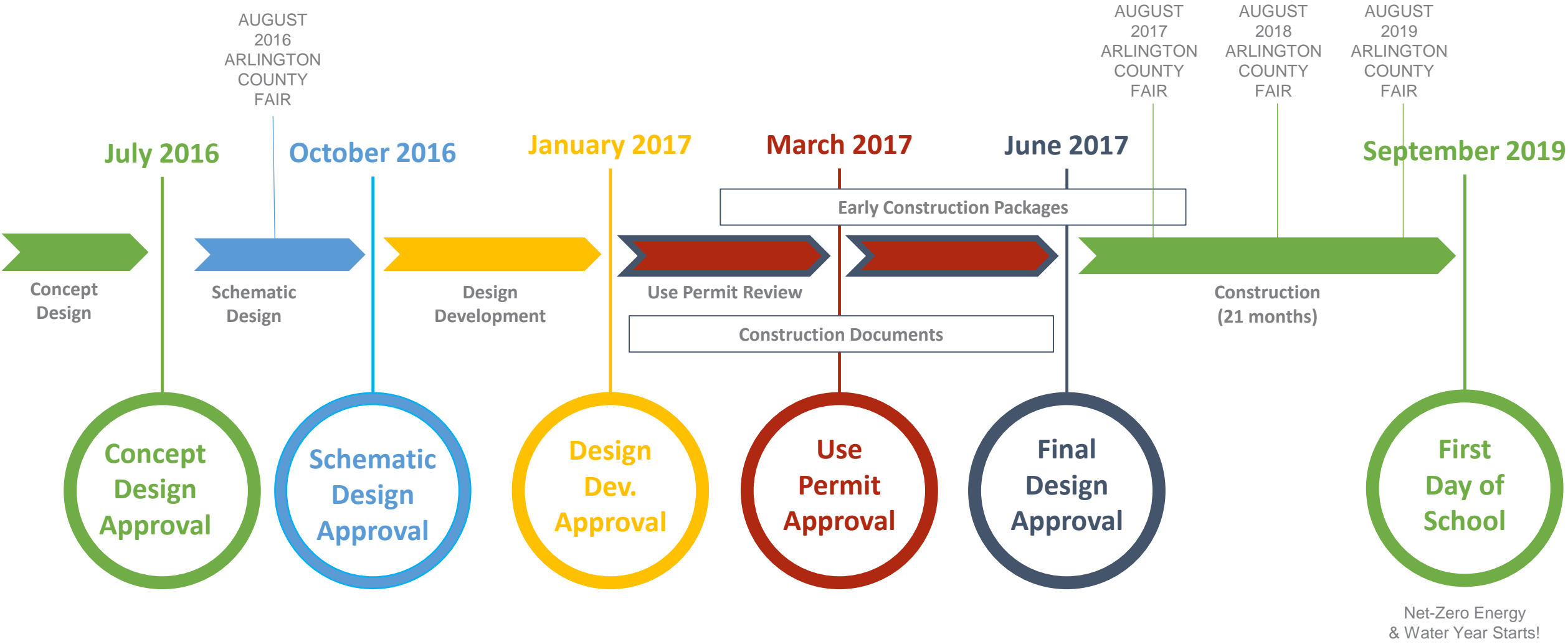
**NEW ELEMENTARY SCHOOL
AT THOMAS JEFFERSON MIDDLE SCHOOL**

Joint BLPC PFRC Meeting

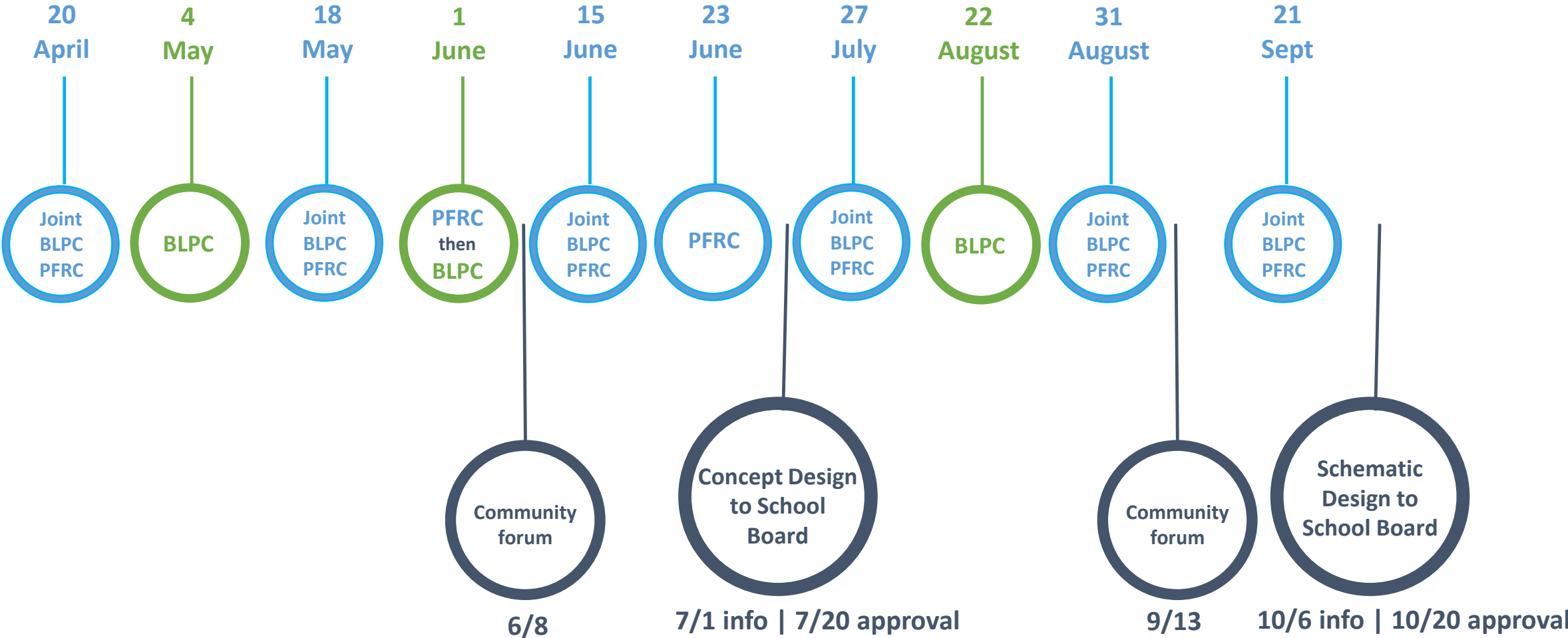
Project Parameters

1. New Elementary School for the Henry Community
2. Support Strategic Plan Goal #4 – Provide Optimal Learning Environments
3. Address capacity by providing 725 seats
4. Open by start of school 2019
5. Multi-story building in northwest corner of site
6. Structured parking
7. Project cost \$59 million

General Schedule | Timeline



General Schedule | Timeline



Building Level Planning Committee

1. Assists APS Staff during Concept and Schematic phases by reviewing:
 - Building location and massing
 - Site Amenities
 - Adjacencies between interior spaces and site amenities
 - Community use of the building and site
 - Impact of project on surrounding community
2. Distribute project updates to constituency groups
3. Solicit comments from constituency groups and share with the BLPC for consideration

Public Facilities Review Committee

PFRC Charge (June 18, 2014)

1. Mission: to ensure that the highest quality of land use planning, design, transportation planning, and other important community aspects are incorporated into civic projects as assigned to the Committee by the Arlington County Board.

2. Key responsibilities:

- Provide forum for advisory commission and committee input
- Ensure highest quality of land use planning and design
- Promote compliance with County Comprehensive Plan and other County planning policies
- Provide means for broad-based public participation
- Provide advice to County Board and County Manager

Arlington Public Schools

1. Develop Site-Specific Educational Specifications
 - List of Spaces
 - Educational Vision and Pedagogy
 - Space Character and Adaptability
 - Detailed floor plan layouts and adjacencies
2. Develop Project Cost Estimates and Monitor Costs
3. Develop content to support BLPC and PFRC

Roles | Charges

BLPC / PFRC / APS / COUNTY STAFF

County Staff

1. Coordinate community review process with APS
2. Provide feedback to APS on applicable County policies
3. Use permit and beyond

Schematic Design Elements

Siting and Massing:

General building location, shape, size, and height

Site layout and circulation:

Building frontage, bus loop/service access, pick-up and drop-off location

Structured parking:

2-levels underground parking beneath the building

Next Steps: Design Development Phase

Prepare Use Permit documents

Submission

County review/comment

Commission meetings

County Board approval

Complete Environmental Assessment (EA)

Continue design document preparation

Prepare construction phase operations/parking plan

Naming the New Elementary School

Governed by School Board Policy 50-1.10 Naming of Facilities

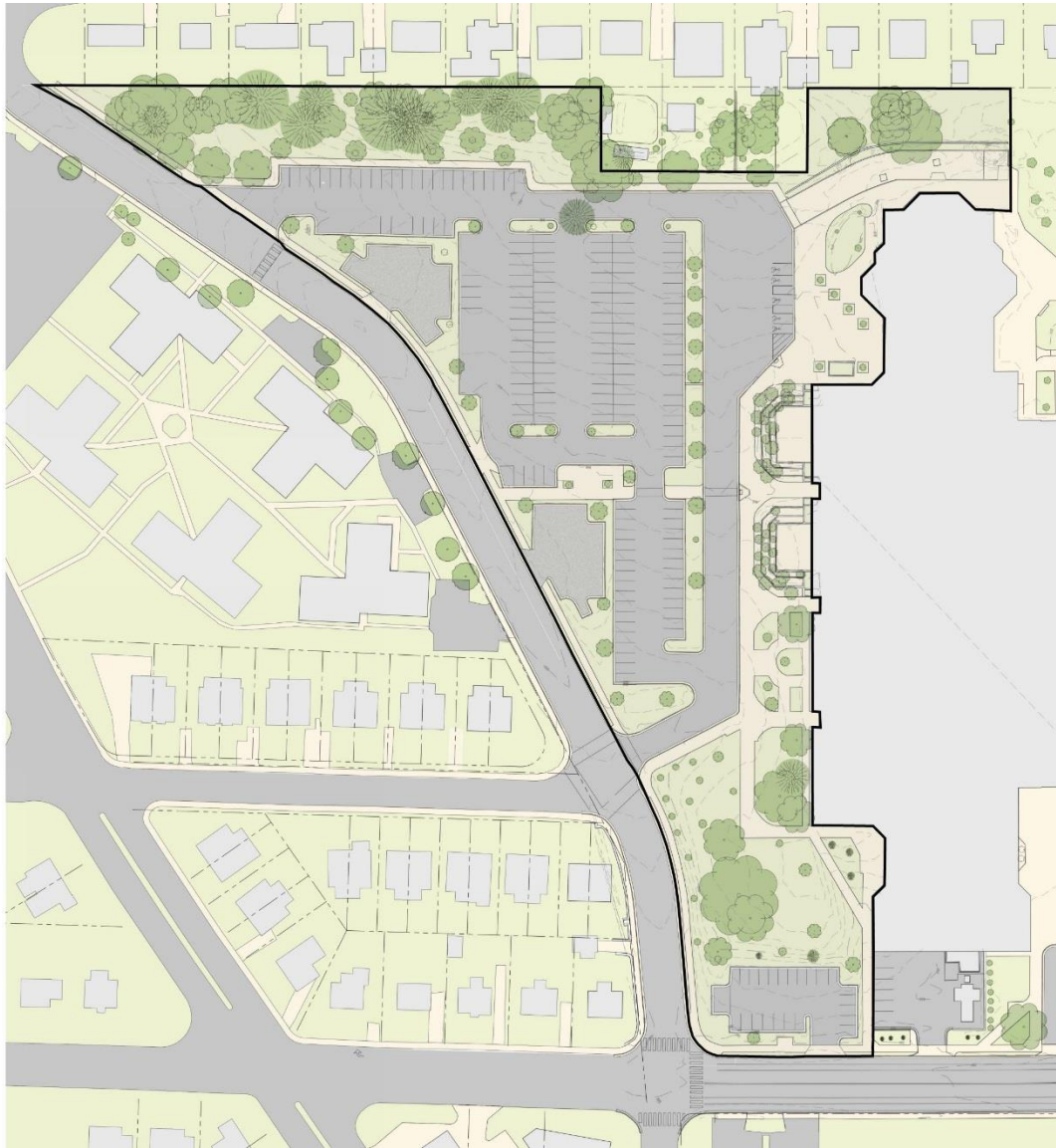
Involves a School Naming Committee

Anticipate beginning the process in the Fall

School Board is receptive to keeping the current Patrick Henry name

Hyperlinks: [School Board Policy 50-1.10](#)

[School Board Policy Implementation Procedure 50-1.10](#)



Overall existing site plan



Overall proposed site plan

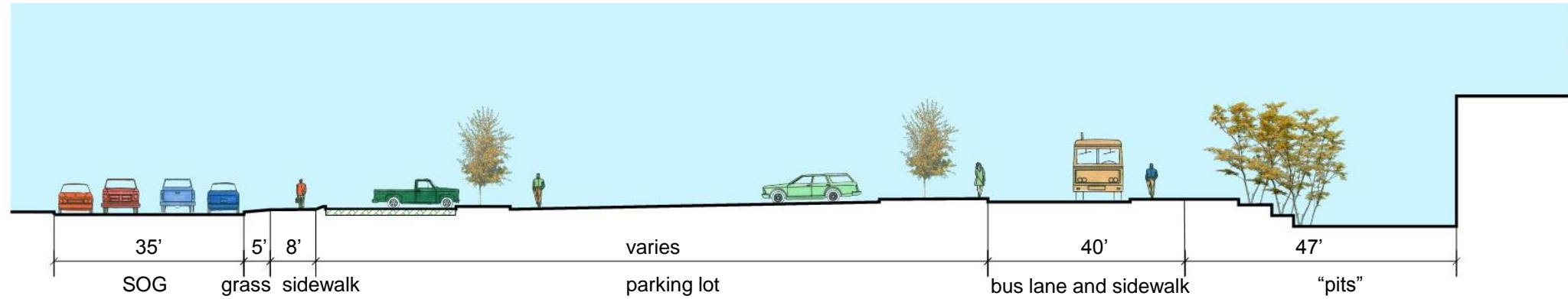


Enlarged existing site plan

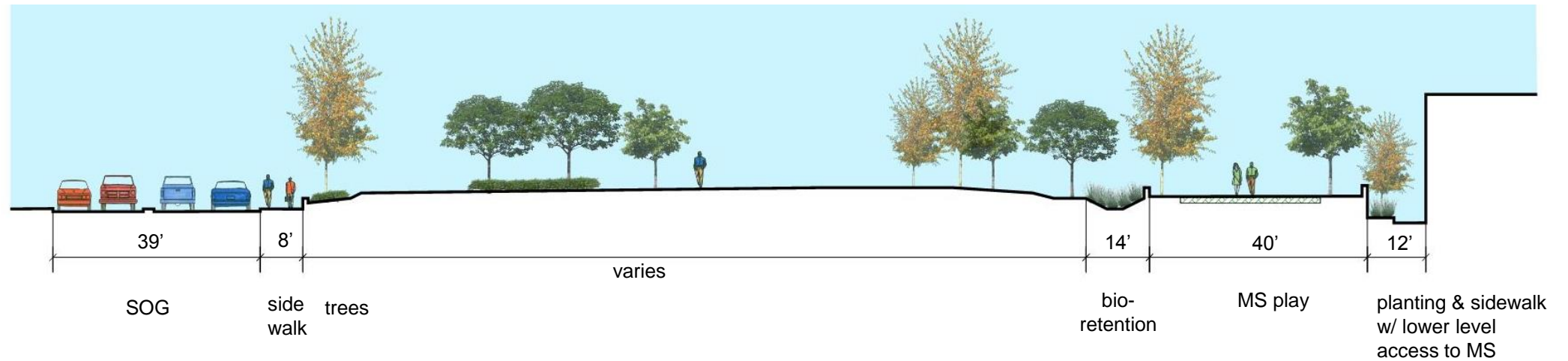


Enlarged proposed site plan

Existing condition



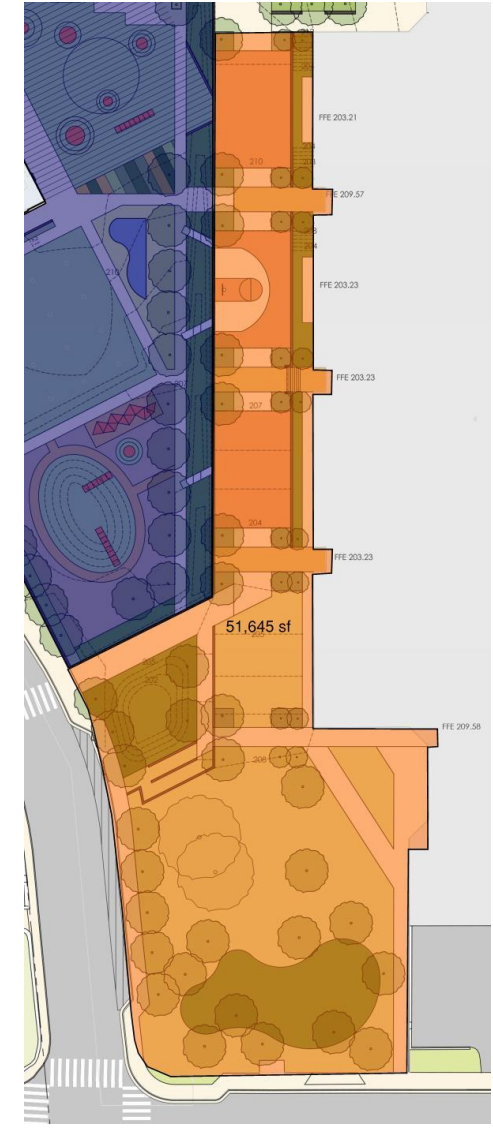
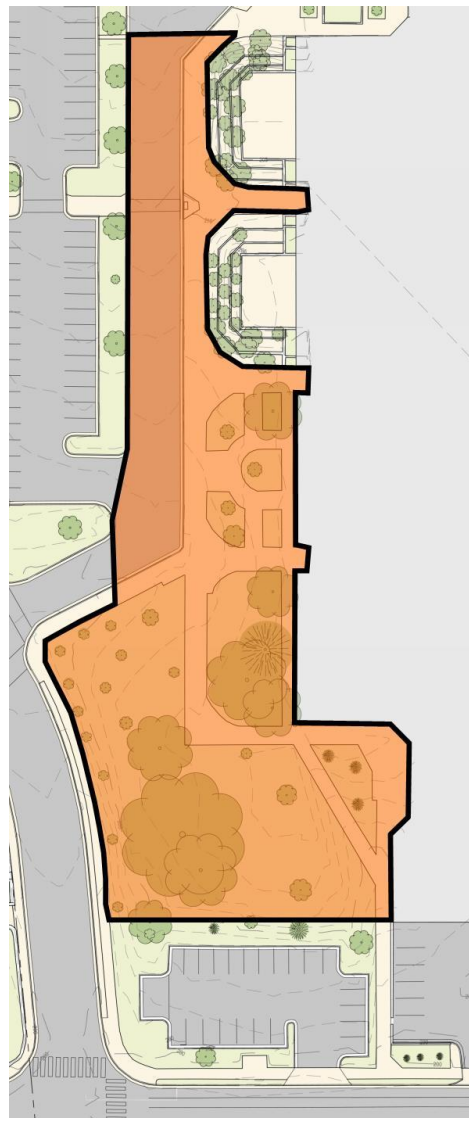
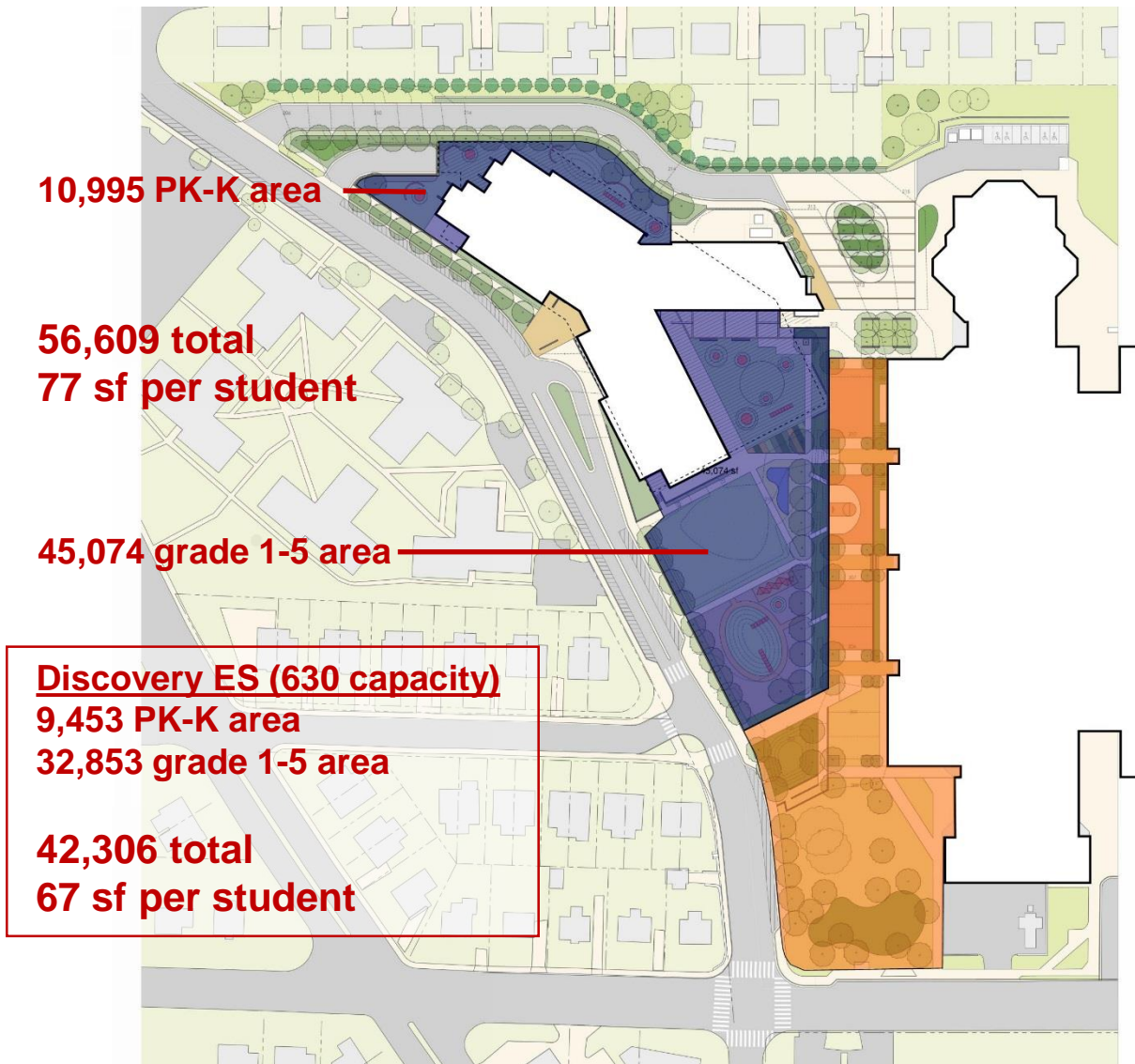
Proposed schematic design



Proposed Schematic Design

Existing condition

Proposed Schematic Design

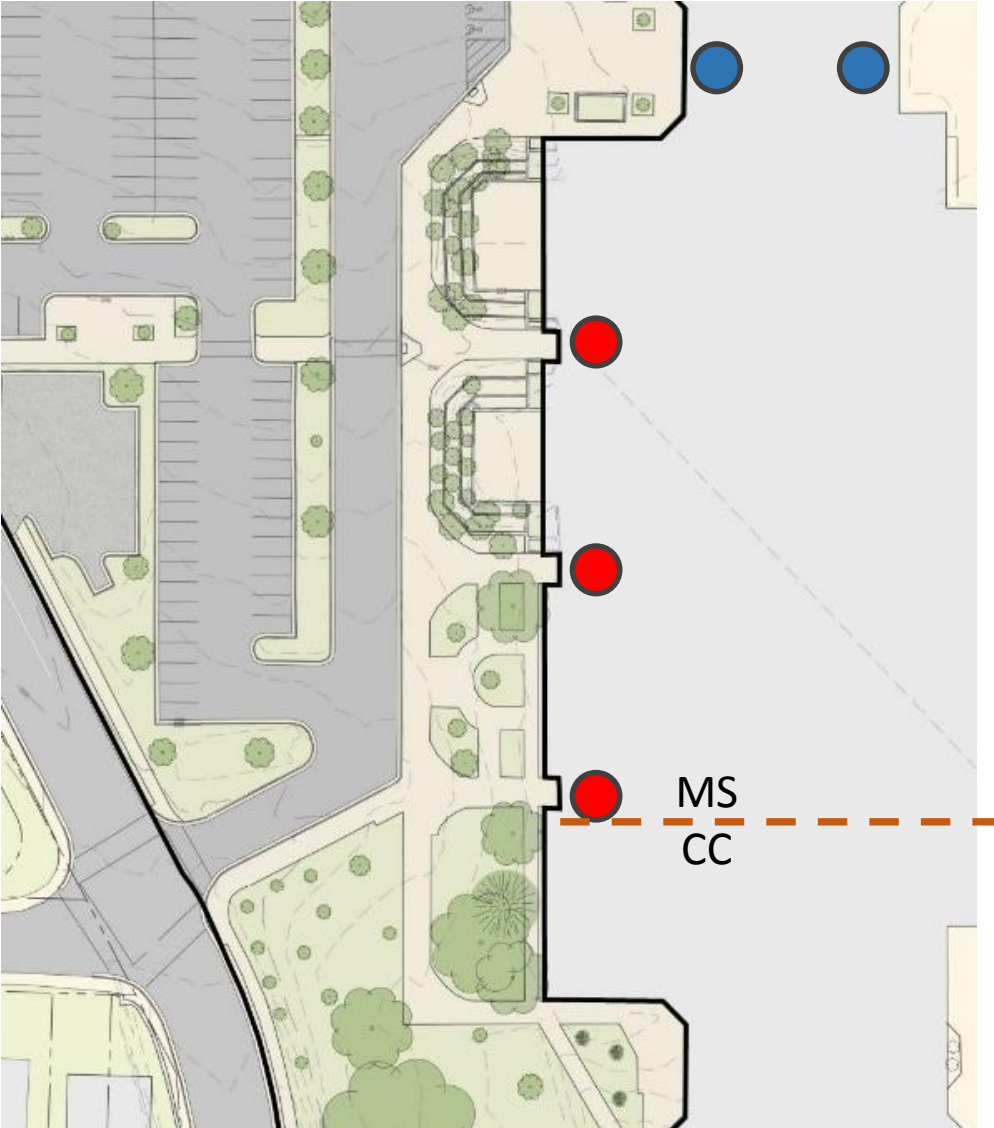


56,609 sf Elementary | 51,675 sf Middle

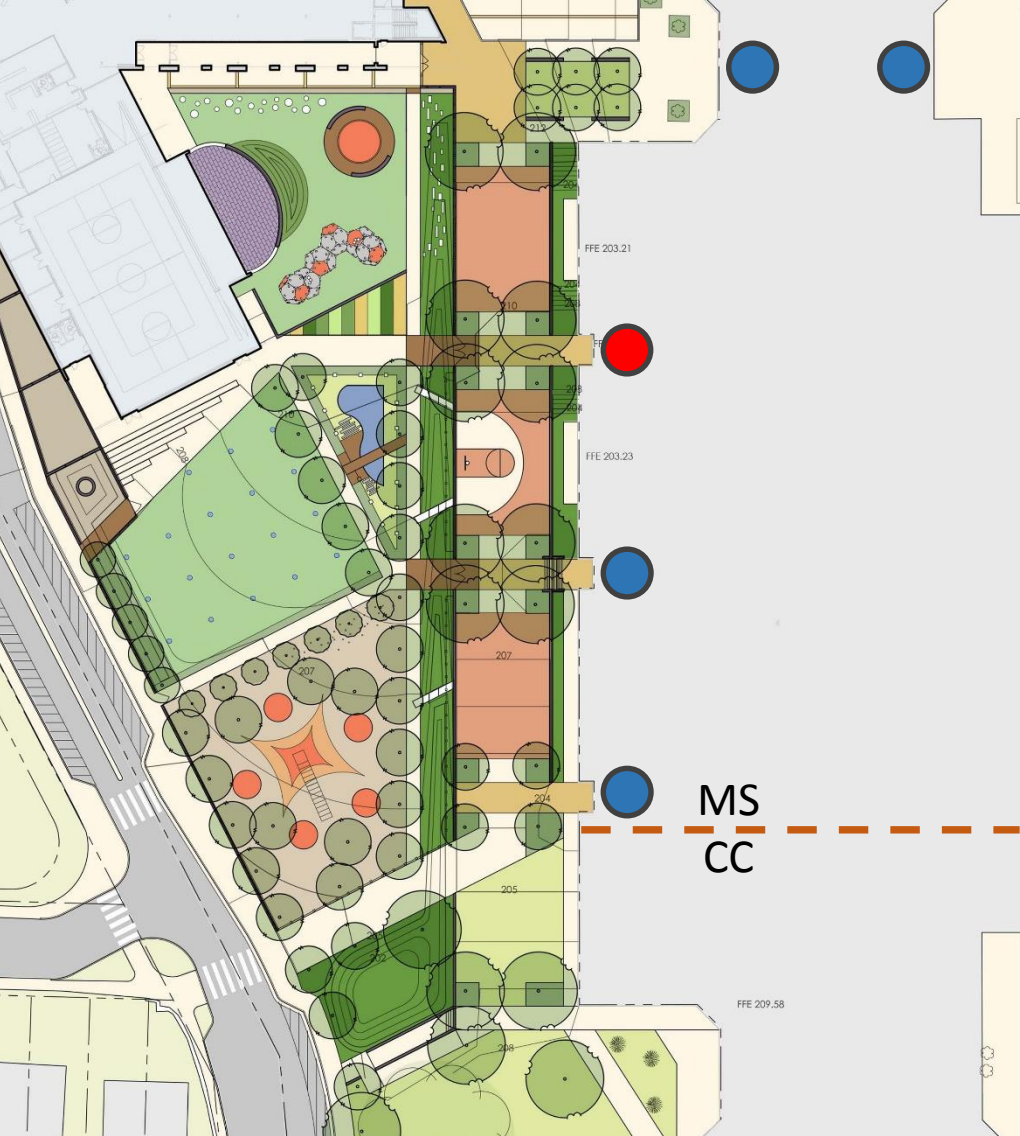
45,439 sf

51,675 sf

Existing condition



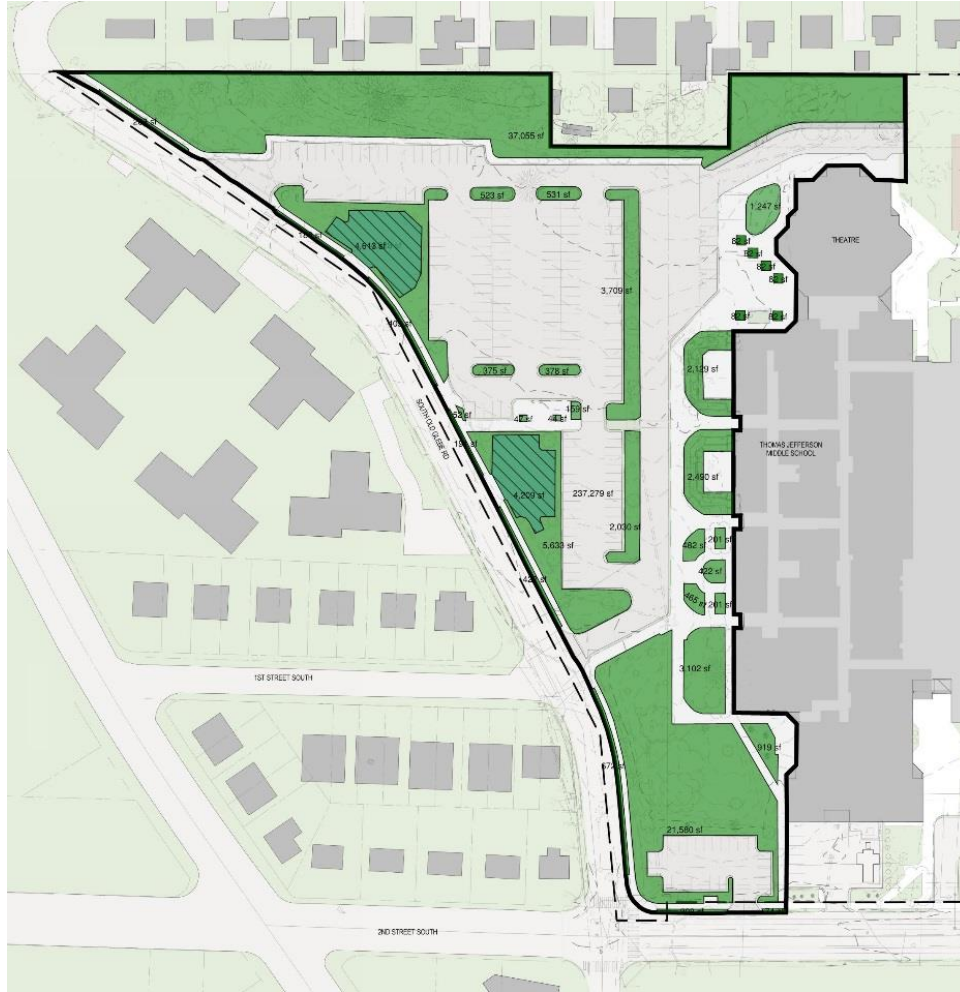
Proposed Schematic Design



Middle school entries

● = non-accessible entrance ● = accessible entrance

Existing Condition

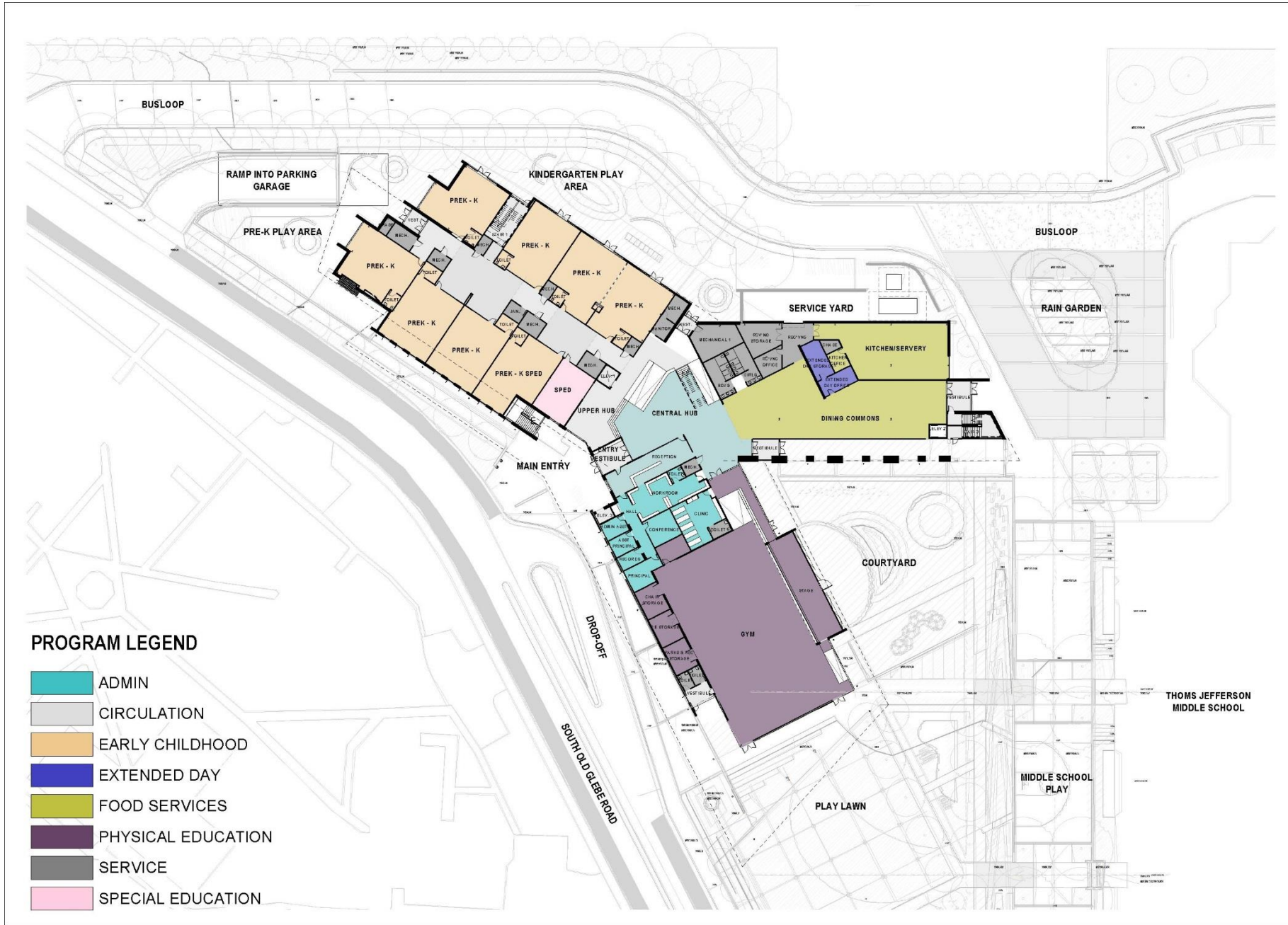


38.6% pervious
3.7% semi
57.7% impervious

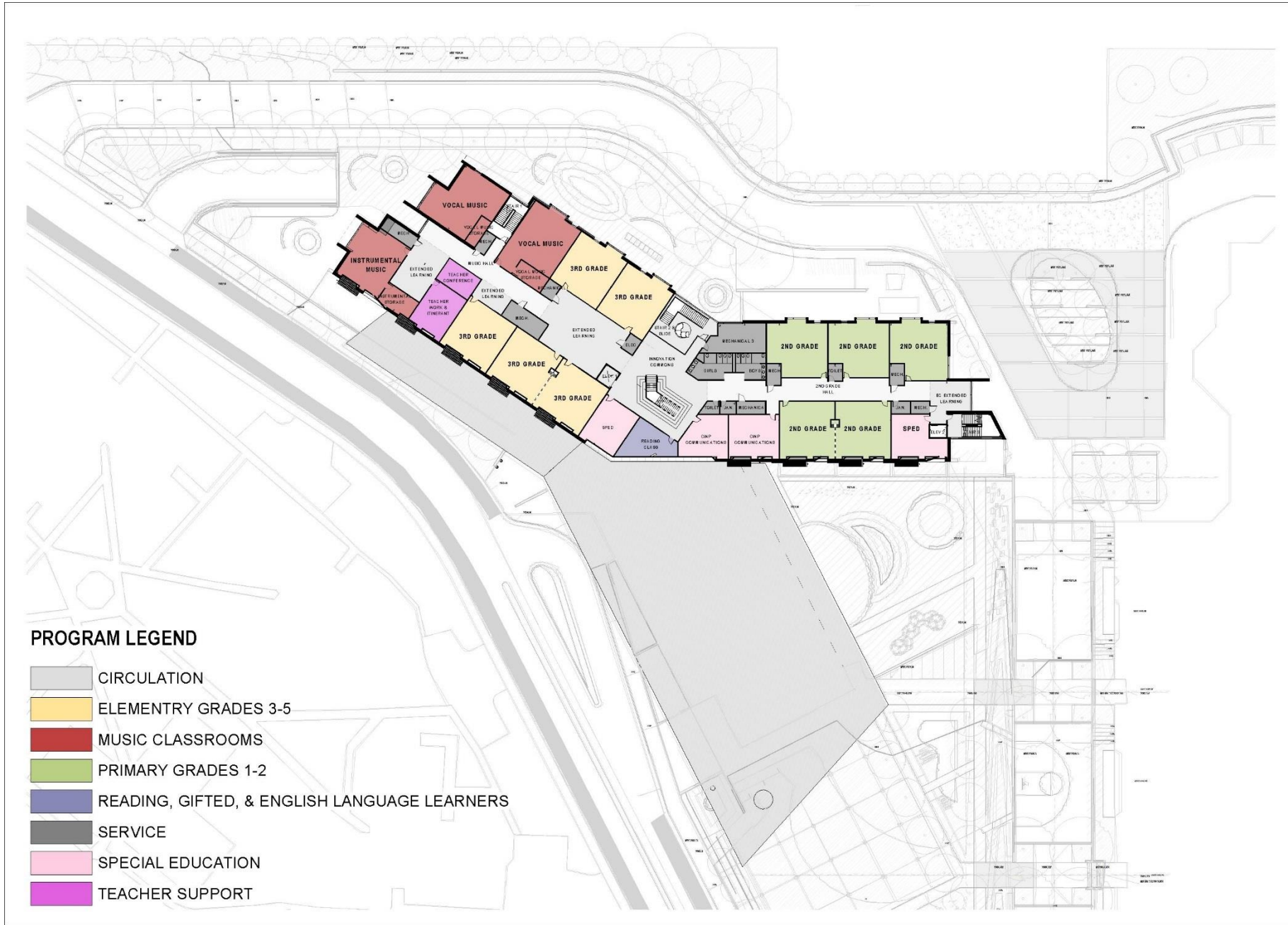
Proposed Schematic Design



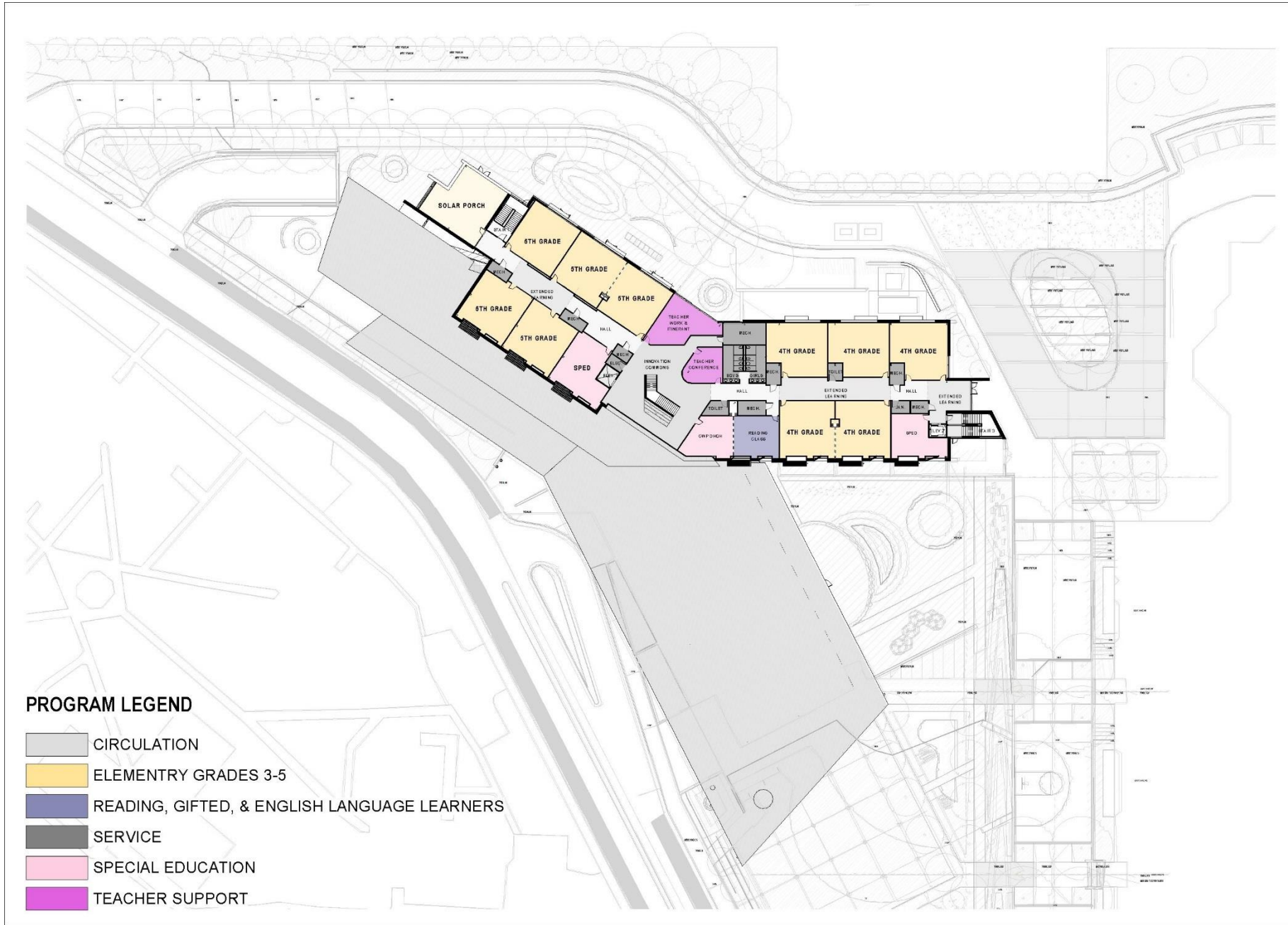
32.5% pervious
11.6% semi
56.0% impervious



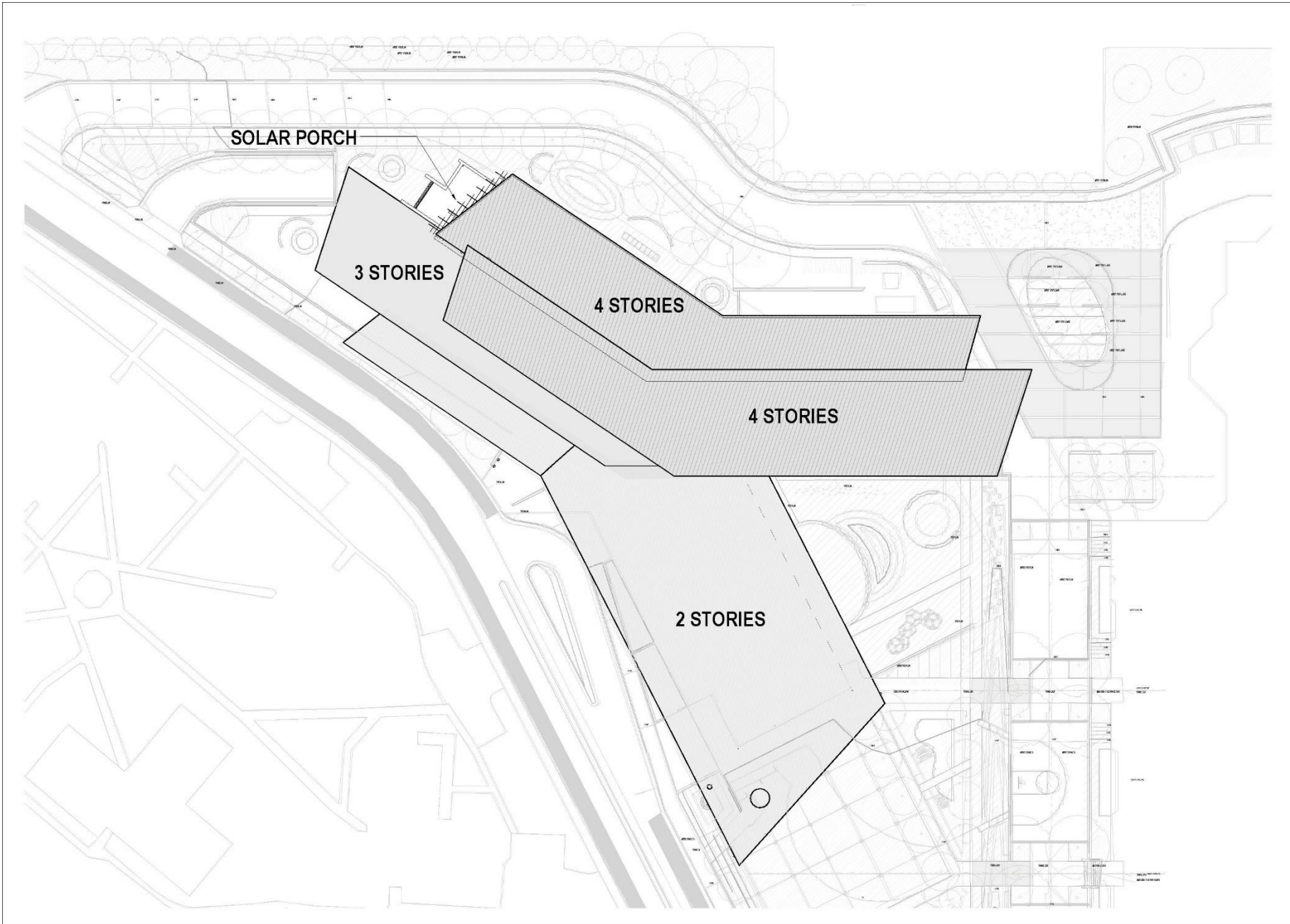
FIRST FLOOR PLAN



THIRD FLOOR PLAN



FOURTH FLOOR PLAN





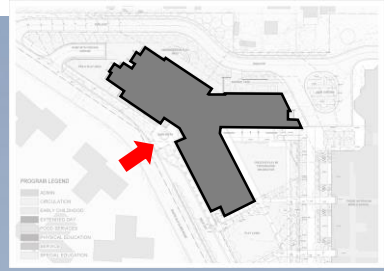










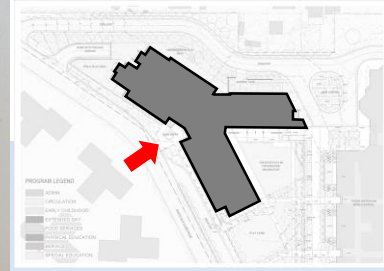




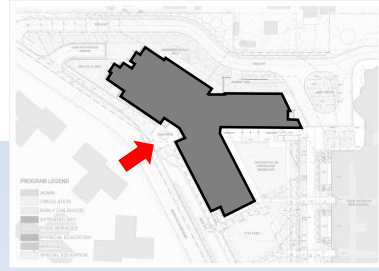
Brick options in sun

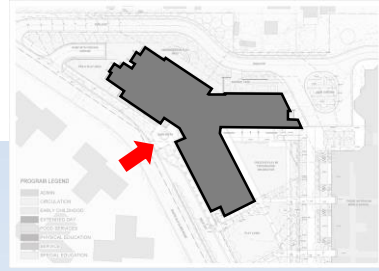


Brick options in shade

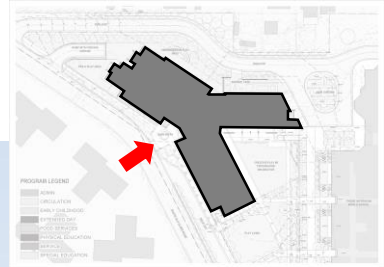


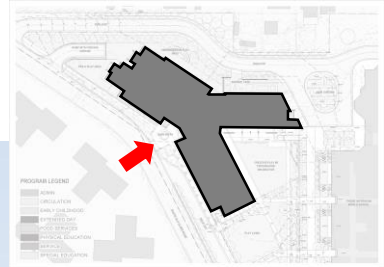
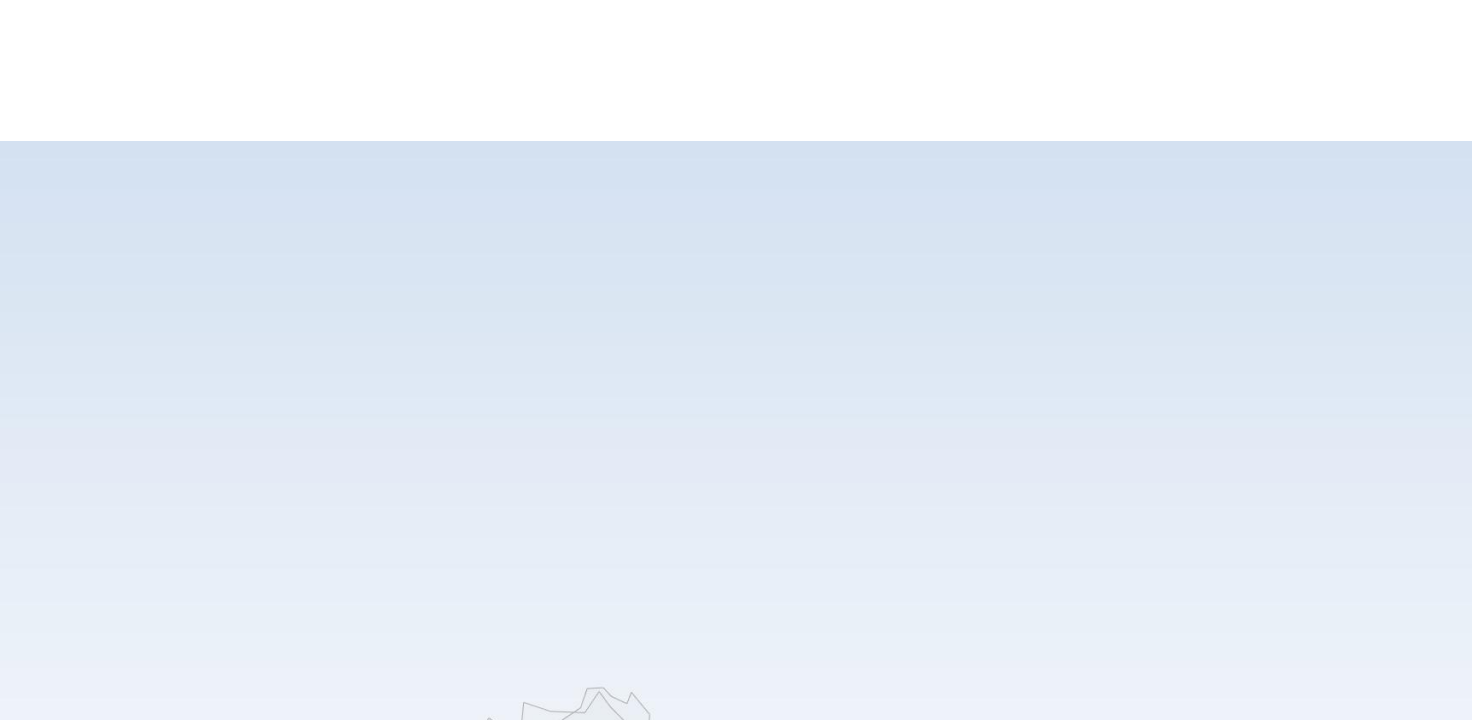










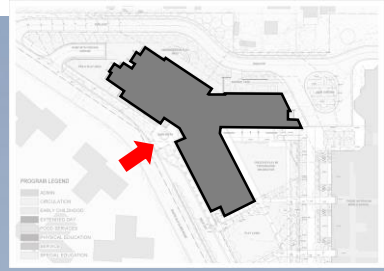




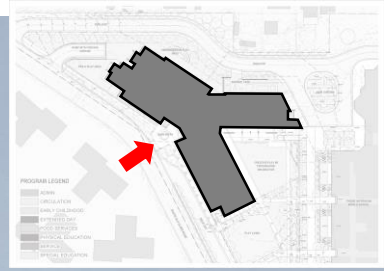
Brick options in sun



Brick options in shade



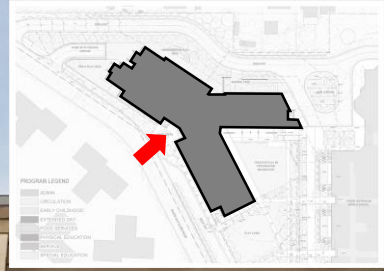
PERSPECTIVE VIEW OF WEST ELEVATION



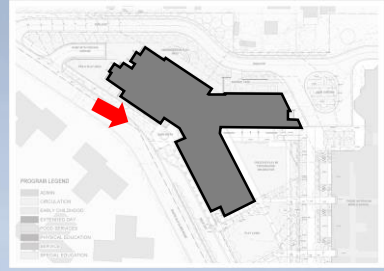
PERSPECTIVE VIEW OF WEST ELEVATION



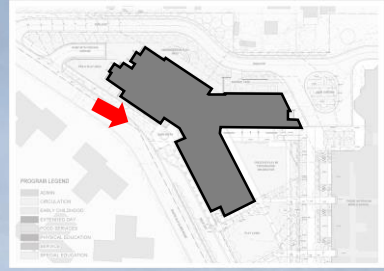
PERSPECTIVE VIEW OF ENTRY



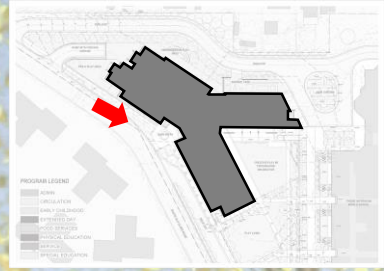
PERSPECTIVE VIEW OF ENTRY



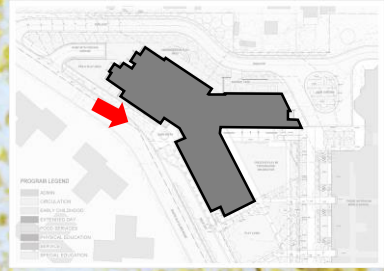
PERSPECTIVE VIEW OF NORTHWEST ELEVATION



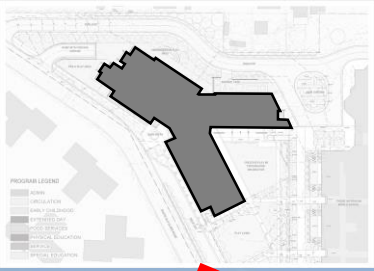
PERSPECTIVE VIEW OF NORTHWEST ELEVATION



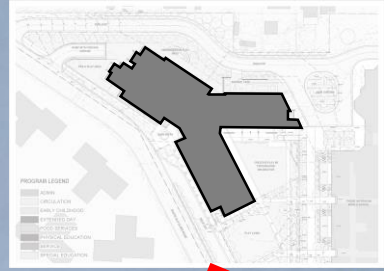
PERSPECTIVE VIEW OF SOUTH EAST TO THEATER



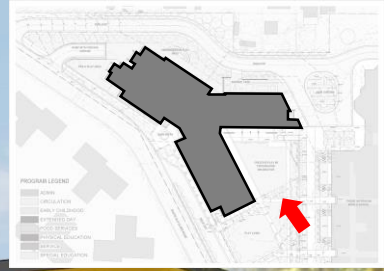
PERSPECTIVE VIEW OF SOUTH EAST TO THEATER



PERSPECTIVE VIEW OF SOUTH ELEVATION



PERSPECTIVE VIEW OF SOUTH ELEVATION

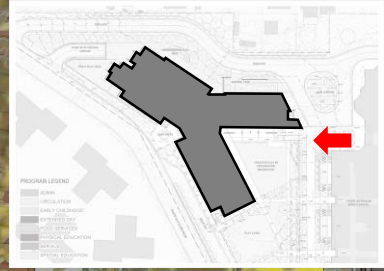




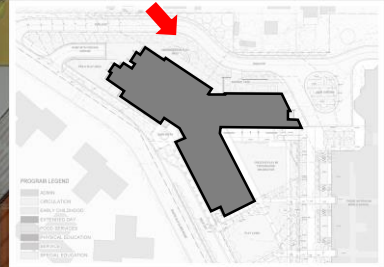
PERSPECTIVE VIEW OF SOUTH ELEVATION



PERSPECTIVE VIEW OF EAST ELEVATION



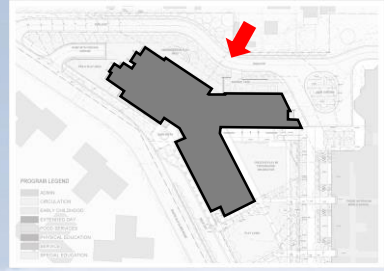
PERSPECTIVE VIEW OF EAST ELEVATION

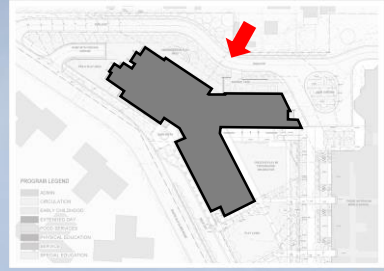


PROGRAM LEGEND

[Symbol]	OFFICE
[Symbol]	LABORATORY
[Symbol]	CLASSROOM
[Symbol]	LECTURE HALL
[Symbol]	RECEPTION
[Symbol]	CAFETERIA
[Symbol]	LIBRARY
[Symbol]	STUDENT CENTER
[Symbol]	ADMINISTRATIVE
[Symbol]	RECREATION
[Symbol]	LANDSCAPE
[Symbol]	UTILITY
[Symbol]	OTHER

PERSPECTIVE VIEW OF NORTHWEST ELEVATION



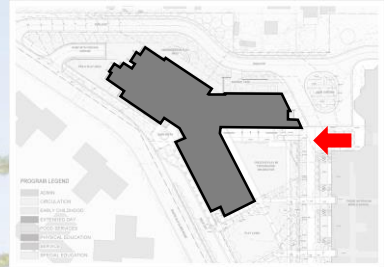




PERSPECTIVE VIEW OF NORTHWEST ELEVATION



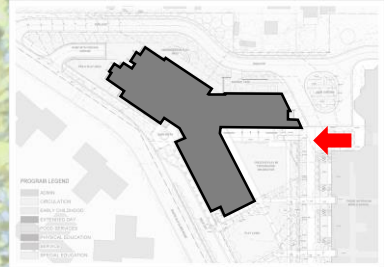
PERSPECTIVE VIEW OF NORTHWEST ELEVATION



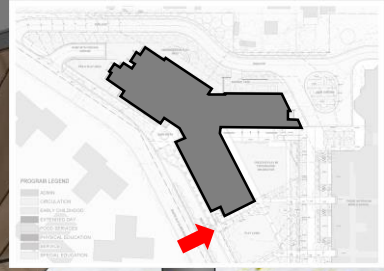
PROGRAM LEGEND

- OFFICE
- CLASSROOM
- GYMNASIUM
- AUDITORIUM
- CAFETERIA
- LIBRARY
- PLAYGROUND
- PEDESTRIAN PLAZA

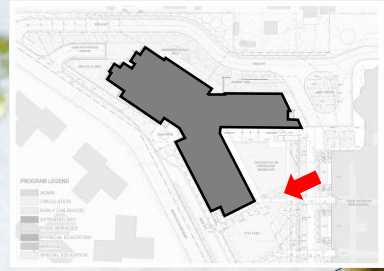
PERSPECTIVE VIEW OF PEDESTRIAN PLAZA



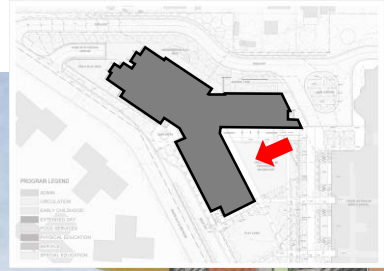
PERSPECTIVE VIEW OF PEDESTRIAN PLAZA



PERSPECTIVE VIEW OF GYM SOUTH WEST



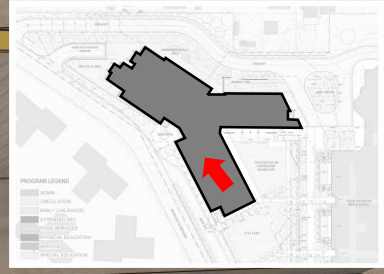
PERSPECTIVE VIEW OF GYM SOUTH EAST



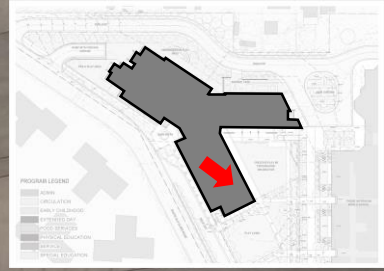
PERSPECTIVE VIEW OF GYM EAST



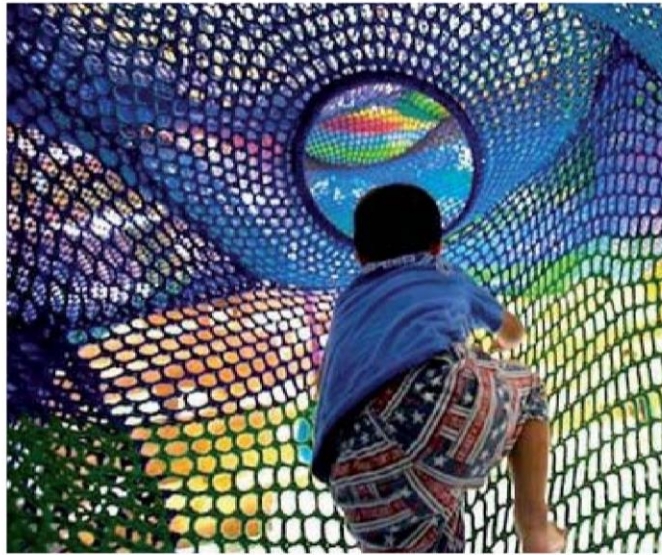
PERSPECTIVE VIEW OF INTERIOR GYM EAST



PERSPECTIVE VIEW OF INTERIOR GYM NORTH









LANDSCAPE PRECEDENT IMAGES



NEXT STEPS

- | | |
|--------------|--|
| September 13 | Community Forum |
| September 21 | Joint BLPC - PFRC |
| October 6 | Schematic Design info item to School Board |
| October 20 | Schematic Design action item to School Board |

ADJORN

For further information please contact:

APS Project Manager

Steve Stricker

571-220-0048

steven.stricker@apsva.us

County Project Manager

Marco Rivero

703-228-3572

mrivero@arlingtonva.us

Web links:

[APS Project Website](#)

[PFRC Project Website](#)

[Submit Public Comment and Sign up for Email Distribution](#)