

AUGUST 31, 2016

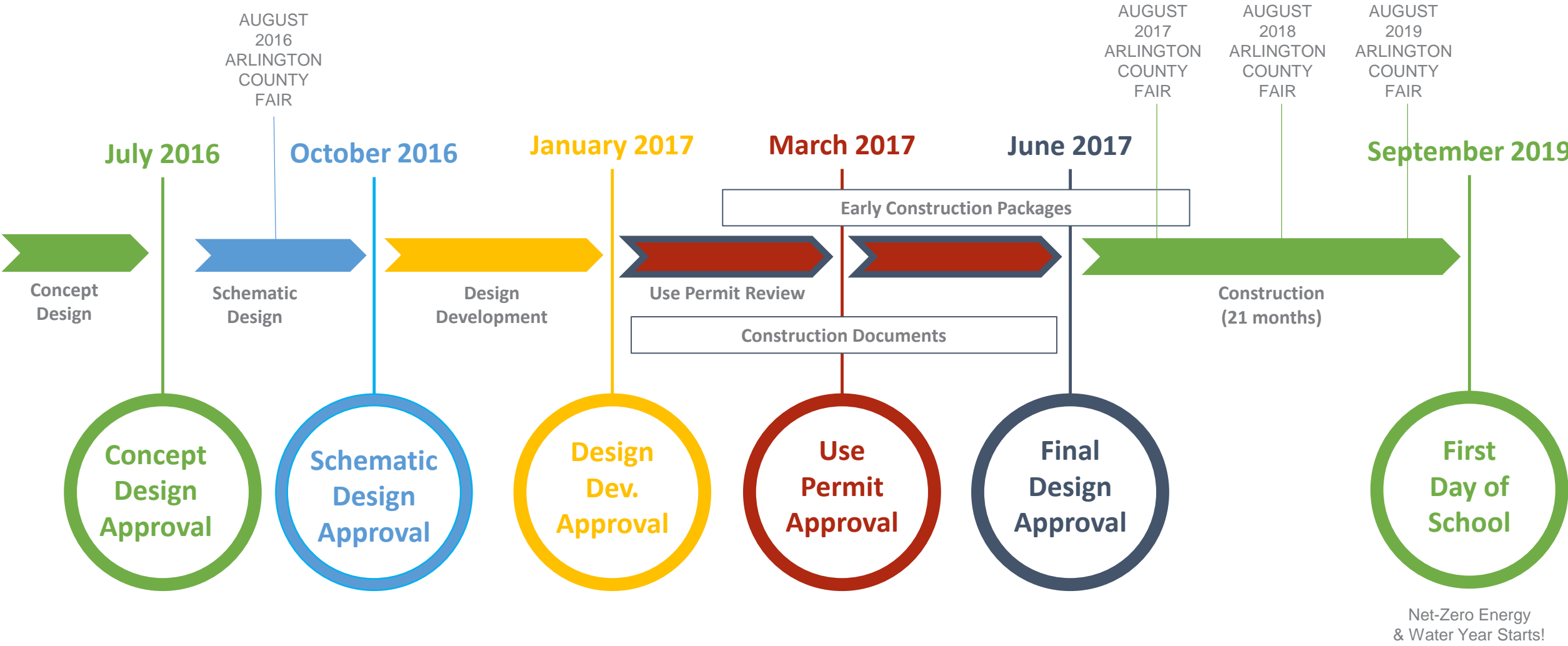
**NEW ELEMENTARY SCHOOL
AT THOMAS JEFFERSON MIDDLE SCHOOL**

Joint BLPC PFRC Meeting

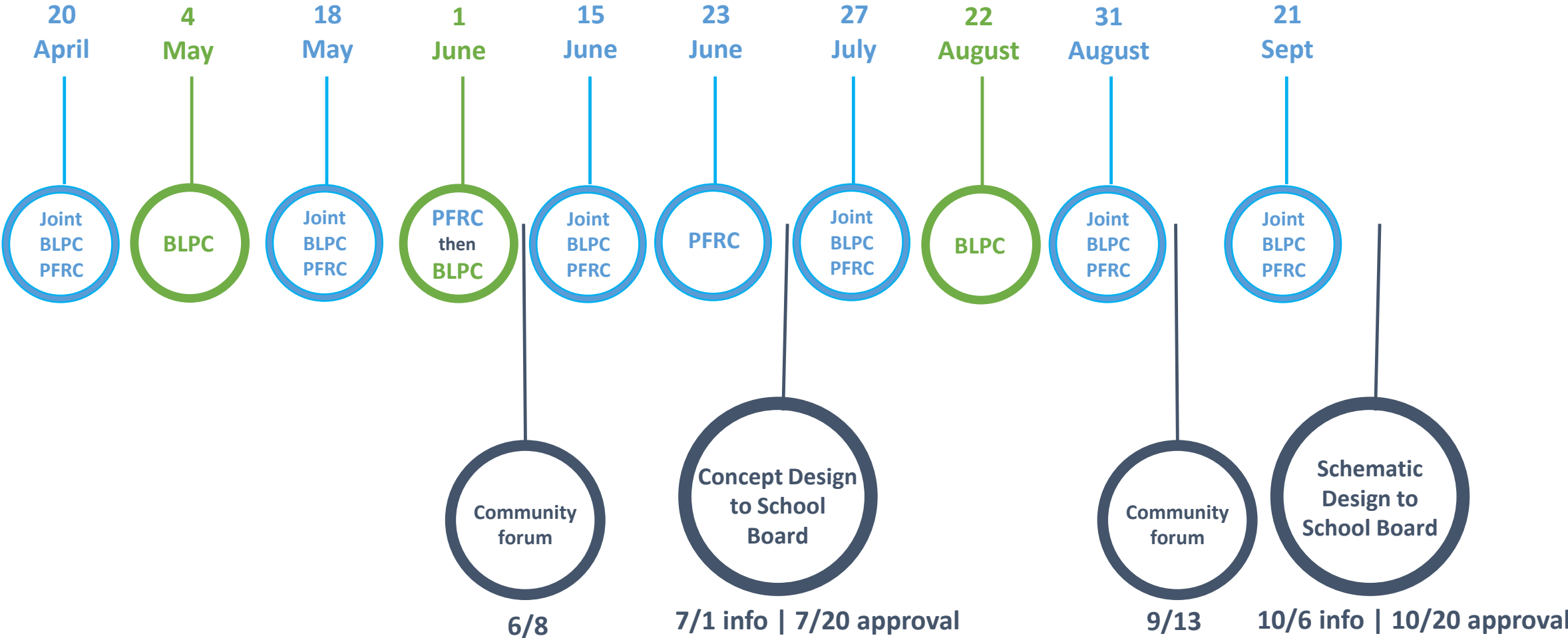
Project Parameters

1. New Elementary School for the Henry Community
2. Support Strategic Plan Goal #4 – Provide Optimal Learning Environments
3. Address capacity by providing 725 seats
4. Open by start of school 2019
5. Multi-story building in northwest corner of site
6. Structured parking
7. Project cost \$59 million

General Schedule | Timeline



General Schedule | Timeline



One level parking, partially below grade



Drop off in garage

Two level parking, underground



Drop off along South Old Glebe

One level parking, partially below grade



197 spots in garage + 11 surface = 208
+/- 40 street spots on school side of SOG

Two level parking, underground



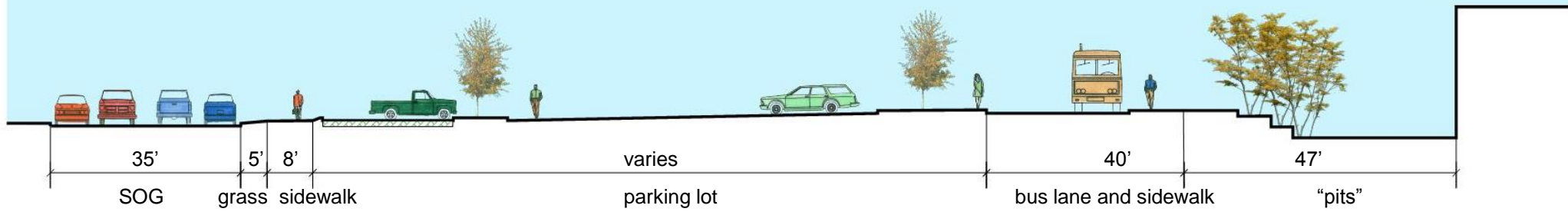
224 spots in garage + 11 surface = 235
+/- 26 street spots on school side of SOG

Two level parking, underground

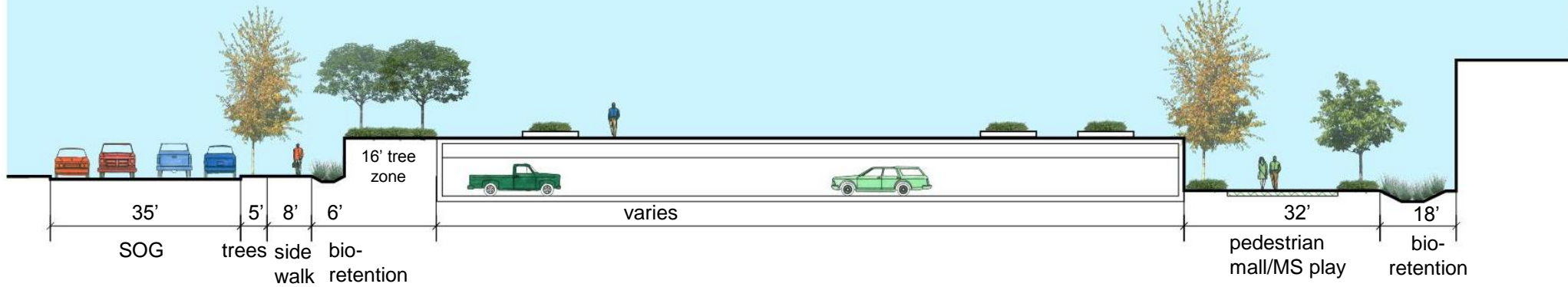


111 spots on upper level, 113 on lower (shown here)

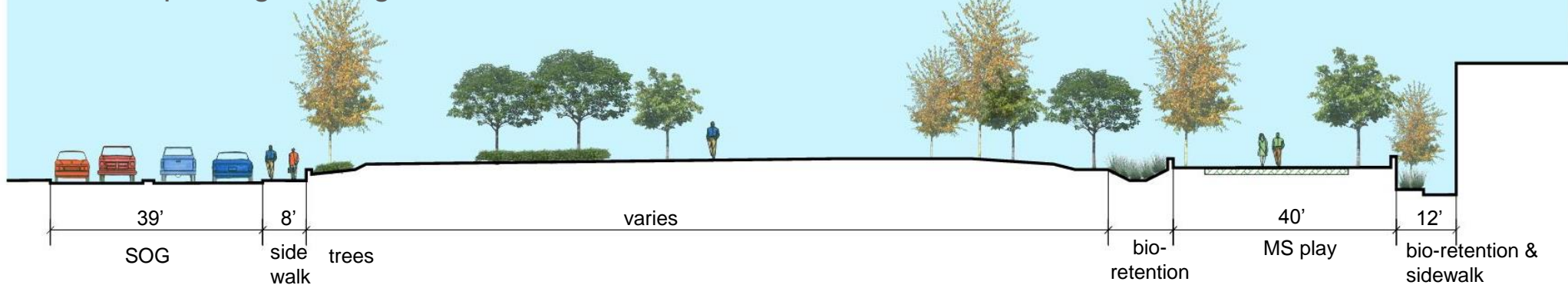
Existing condition



One level parking, partially below grade



Two level parking, underground

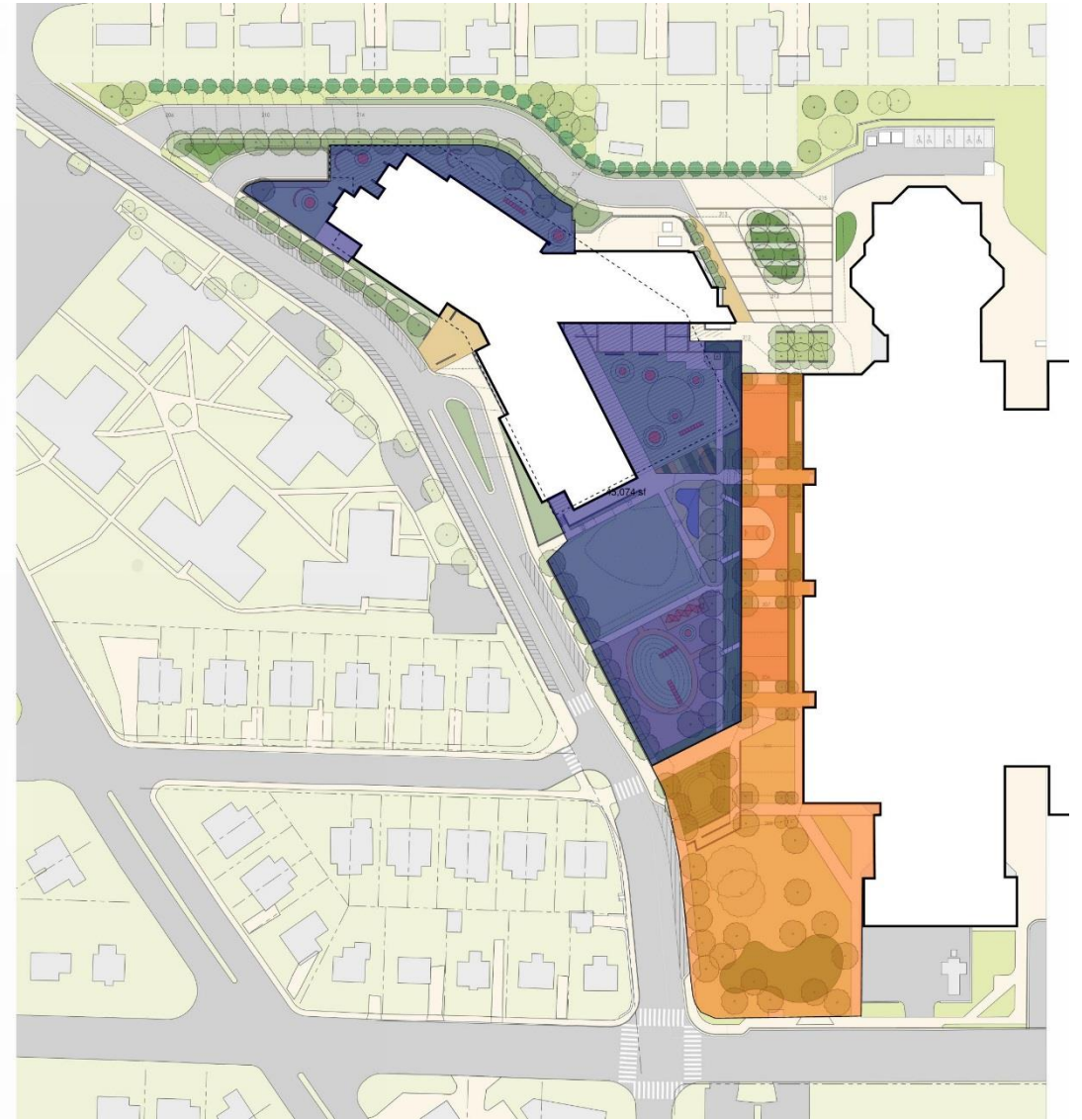


One level parking, partially below grade



52,685 sf Elementary | 51,443 sf Middle

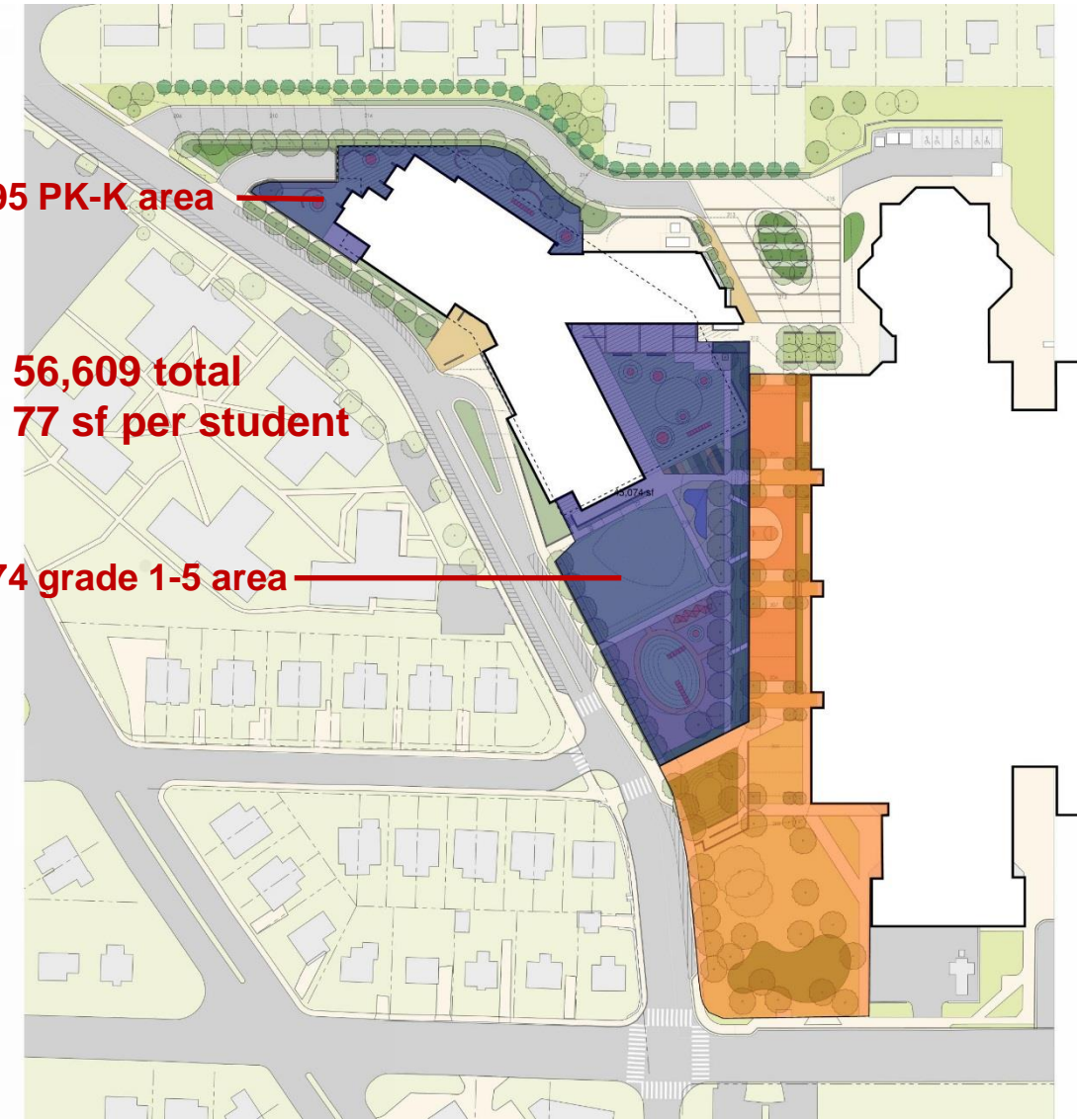
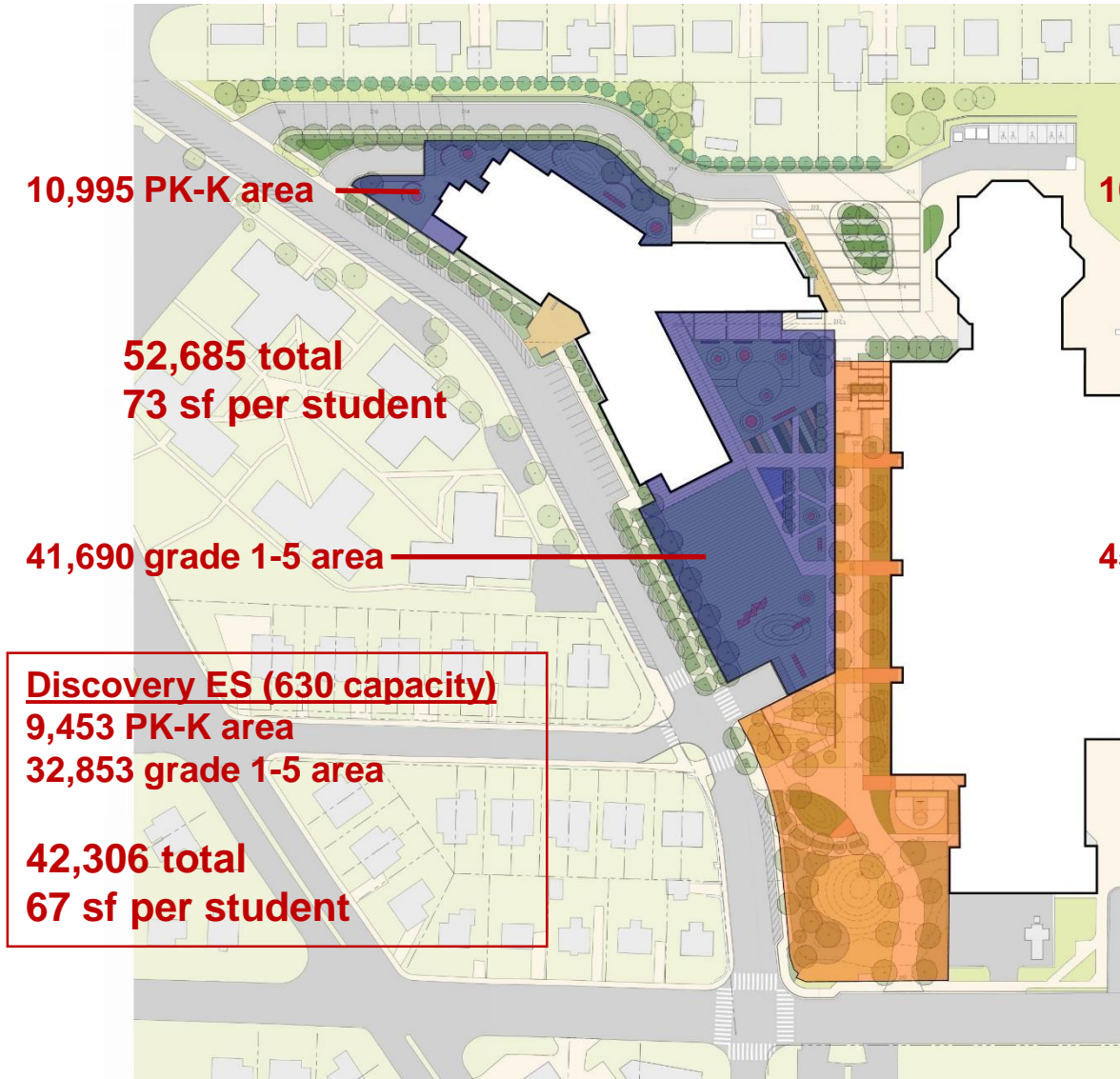
Two level parking, underground



56,609 sf Elementary | 51,675 sf Middle

One level parking, partially below grade

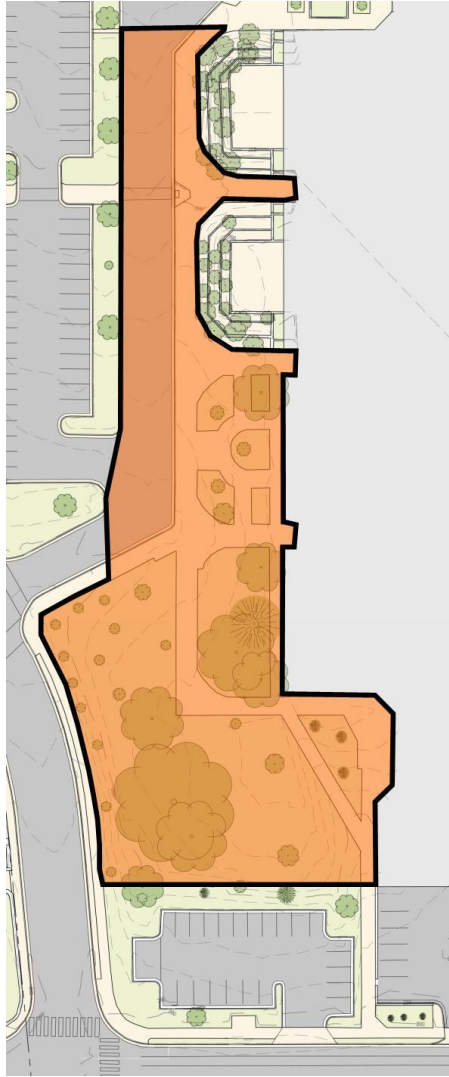
Two level parking, underground



52,685 sf Elementary | 51,443 sf Middle

56,609 sf Elementary | 51,675 sf Middle

Existing condition



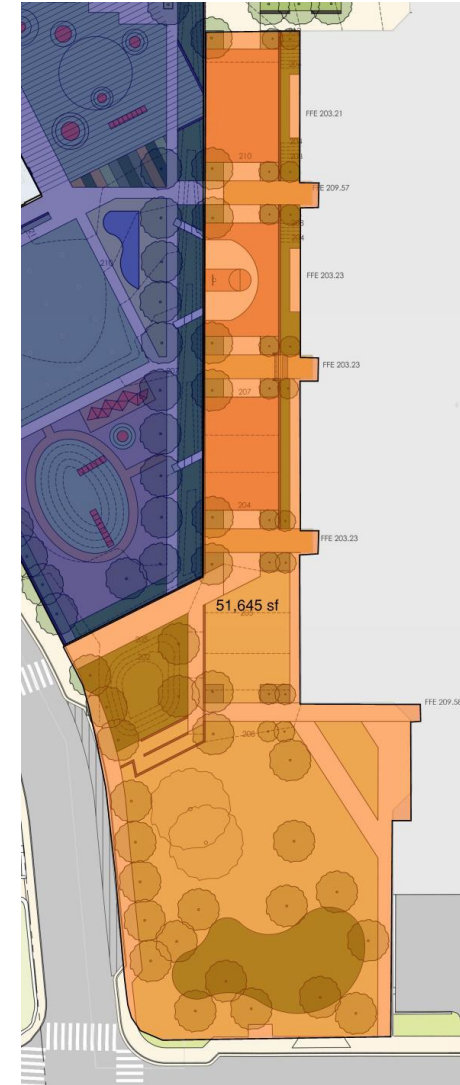
45,439 sf

One level parking



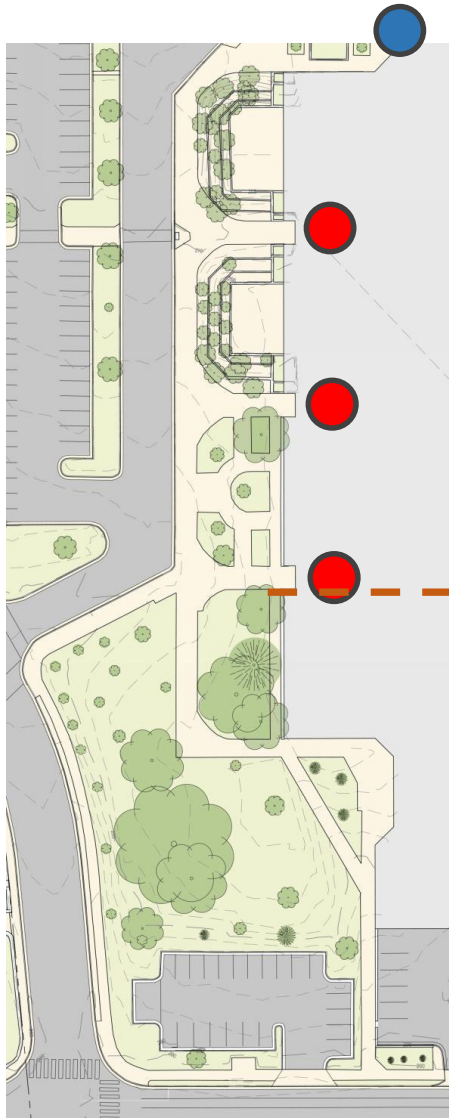
48,796 sf

Two level parking



51,675 sf

Existing condition



MS
CC

One level parking



MS
CC

Two level parking



MS
CC



= non-accessible entrance



= accessible entrance

One level parking, partially below grade



Two level parking, underground



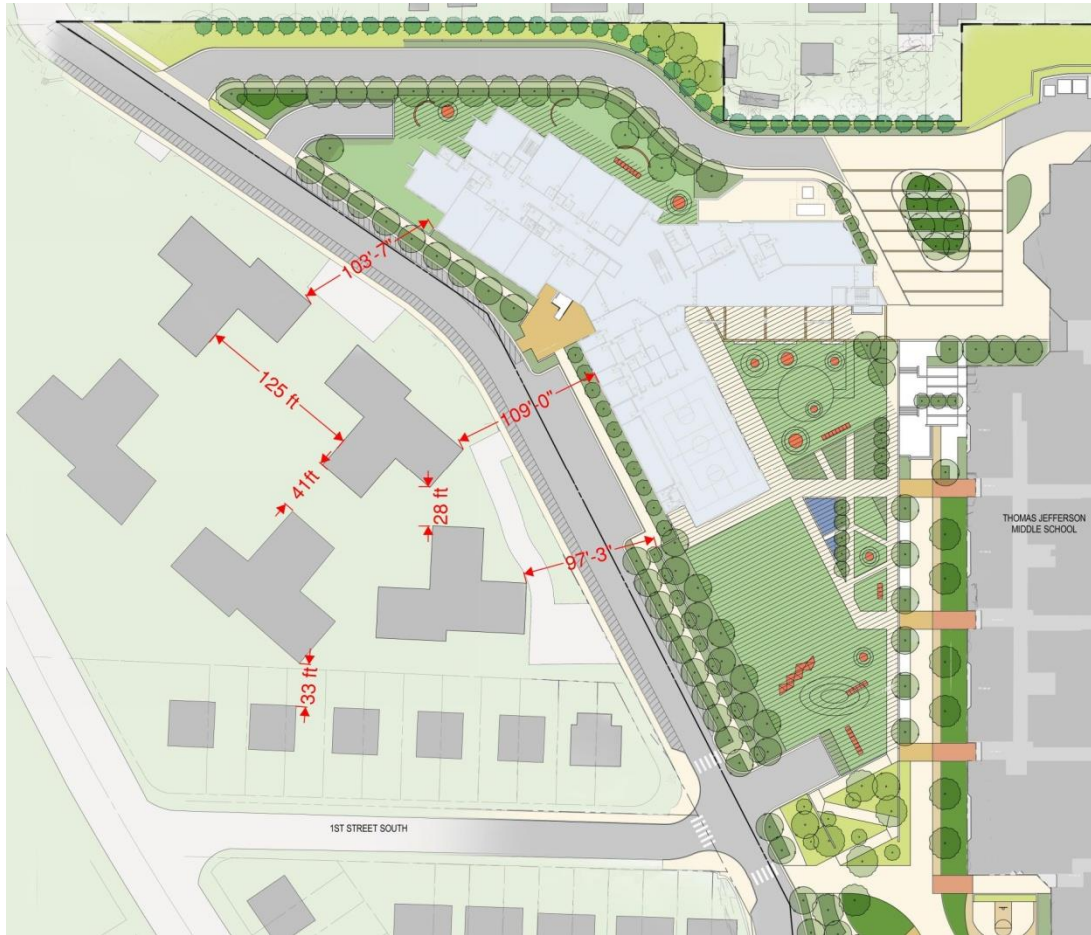
One level parking, partially below grade



Two level parking, underground



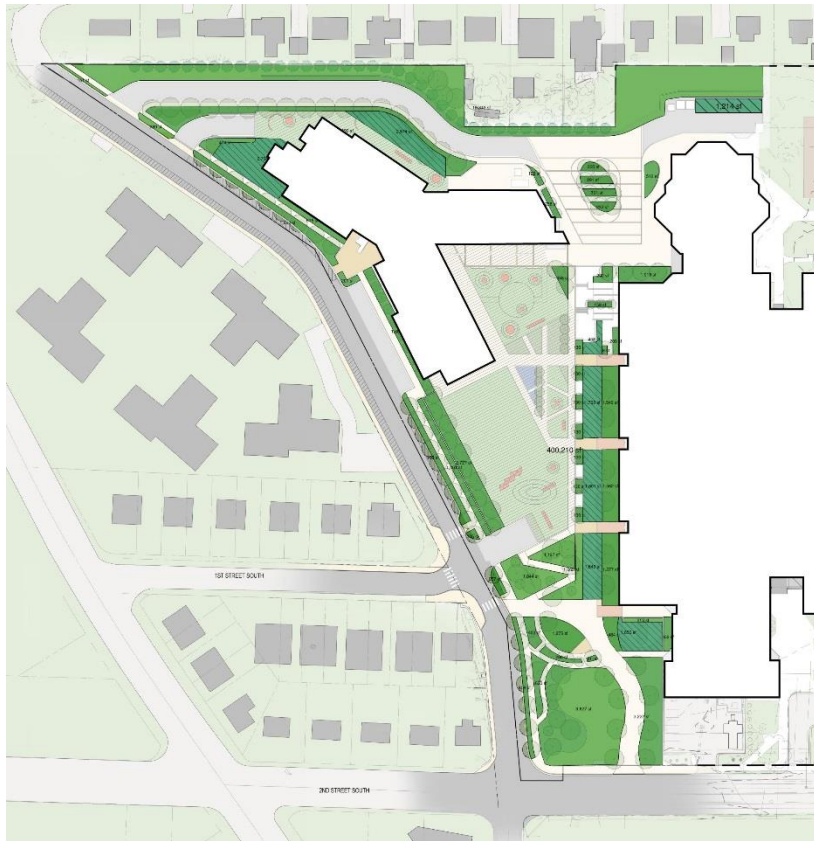
One level parking, partially below grade



Two level parking, underground

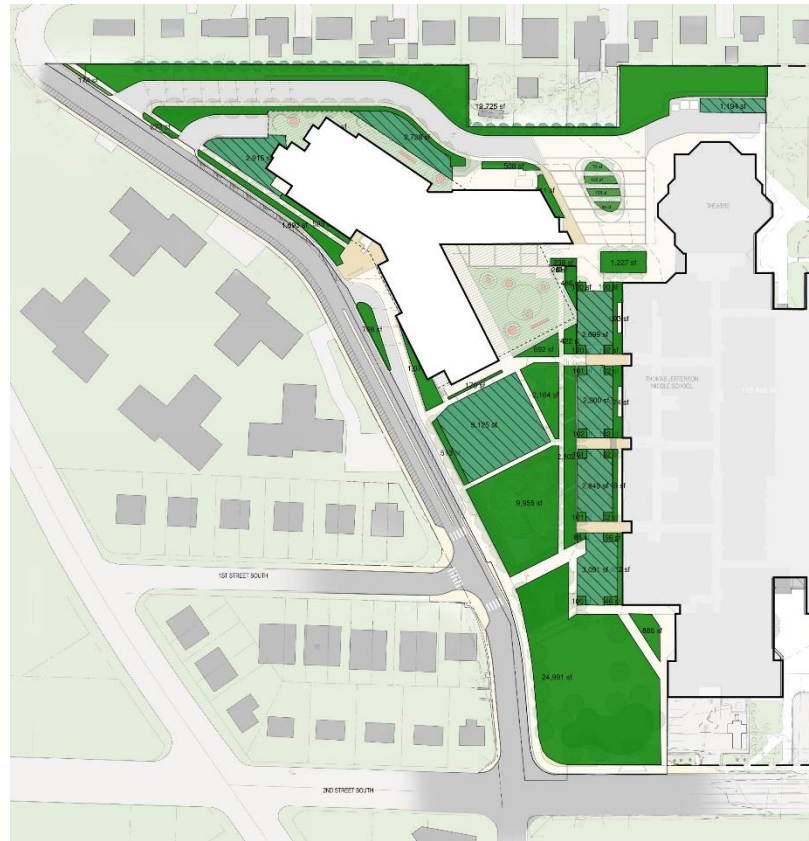


One level parking,
partially below grade



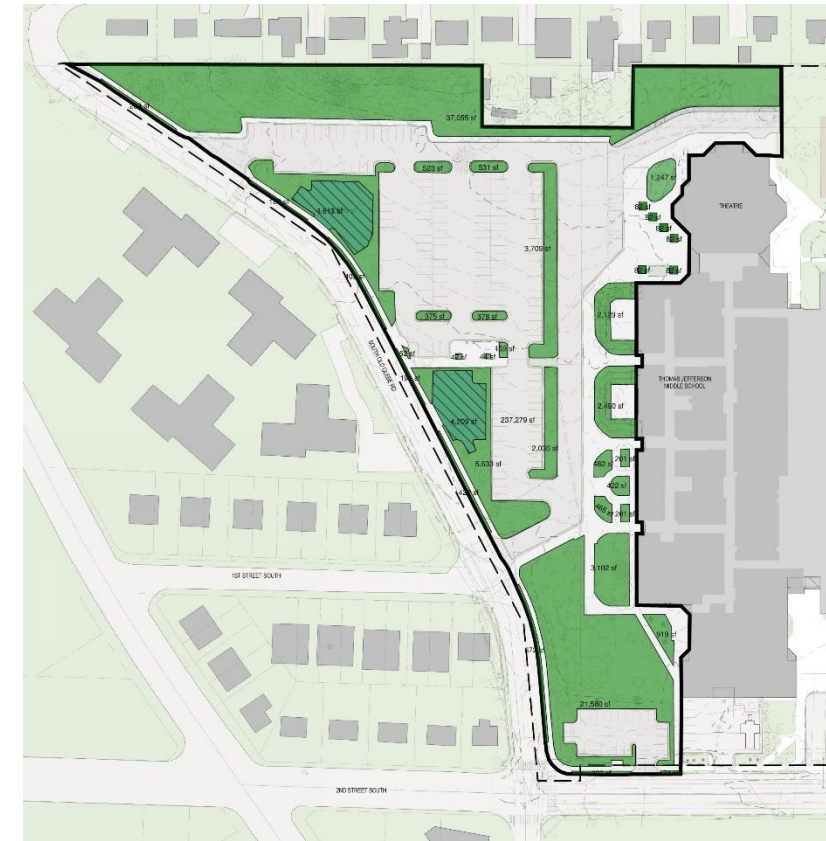
27.1% pervious
5.8% semi
67.1% impervious

Two level parking,
underground



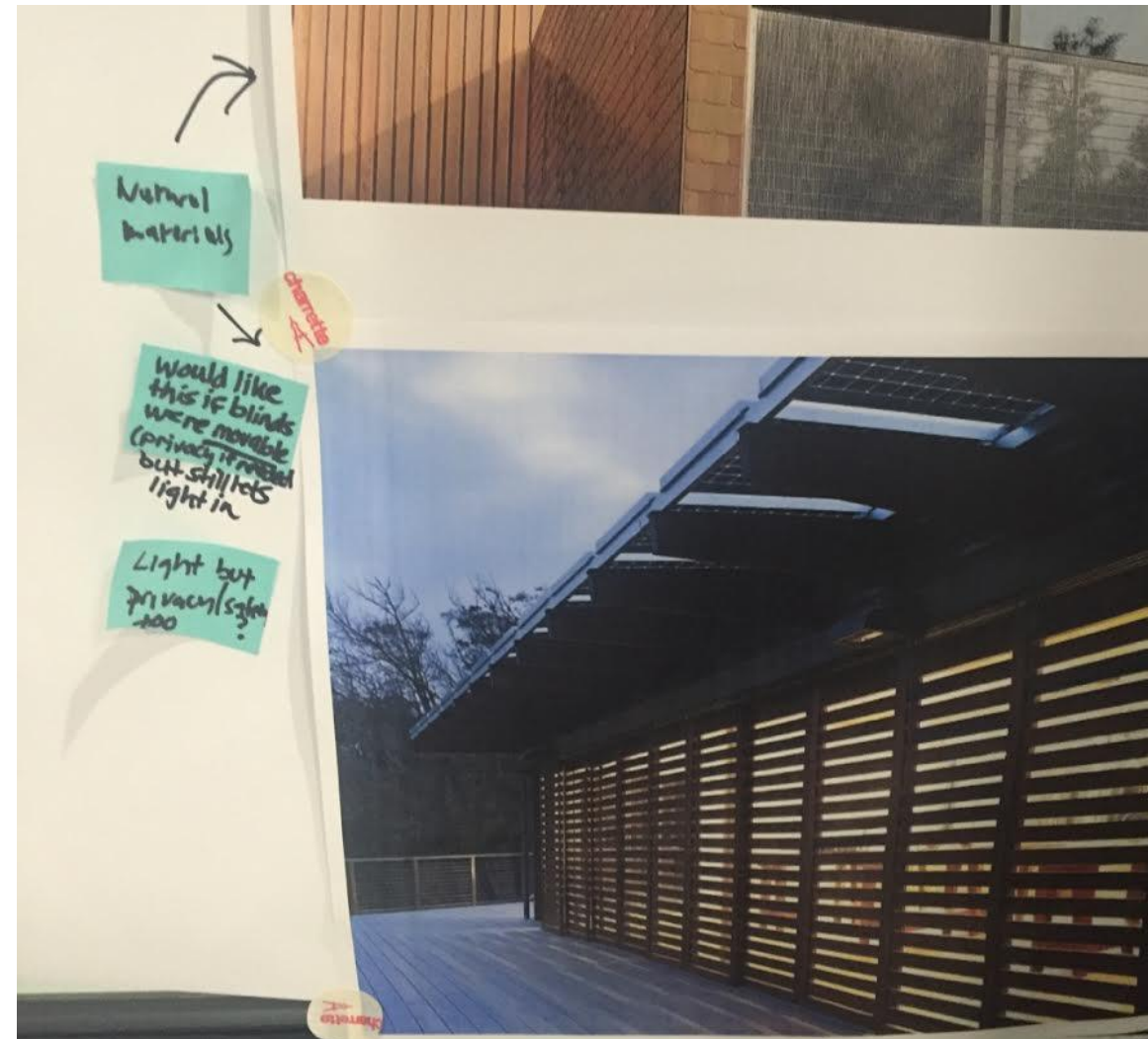
32.5% pervious
11.6% semi
56.0% impervious

Existing
Condition



38.6% pervious
3.7% semi
57.7% impervious









- GREEN SPACE ROOF
- CREATIVE FUN - LIKE THE WATER FEATURE
- GREAT PLAY SPACE
- GOOD PLAY SPACE
- IF THIS IS IT, NOT ENOUGH VARIETY
- NEED EQUIPMENT THAT BUILDS STRENGTH



- GOOD LIGHT
- LOVE GLASS, LIGHT, INDOOR, OUTDOOR
- YES TO LIGHT
- LIKE THE GLASS AND LIGHT
- GOOD LIGHT
- NO TO CORRUGATED METALS



- OUTDOOR SPACE
- LIKE THE INTEGRATION OF INDOOR AND OUTDOOR
- LOTS OF WINDOWS - LETS OUTSIDE IN
- LIKE THE COURTYARD INDOOR/OUTDOOR INTEGRATION
- TOO MUCH PAVEMENT



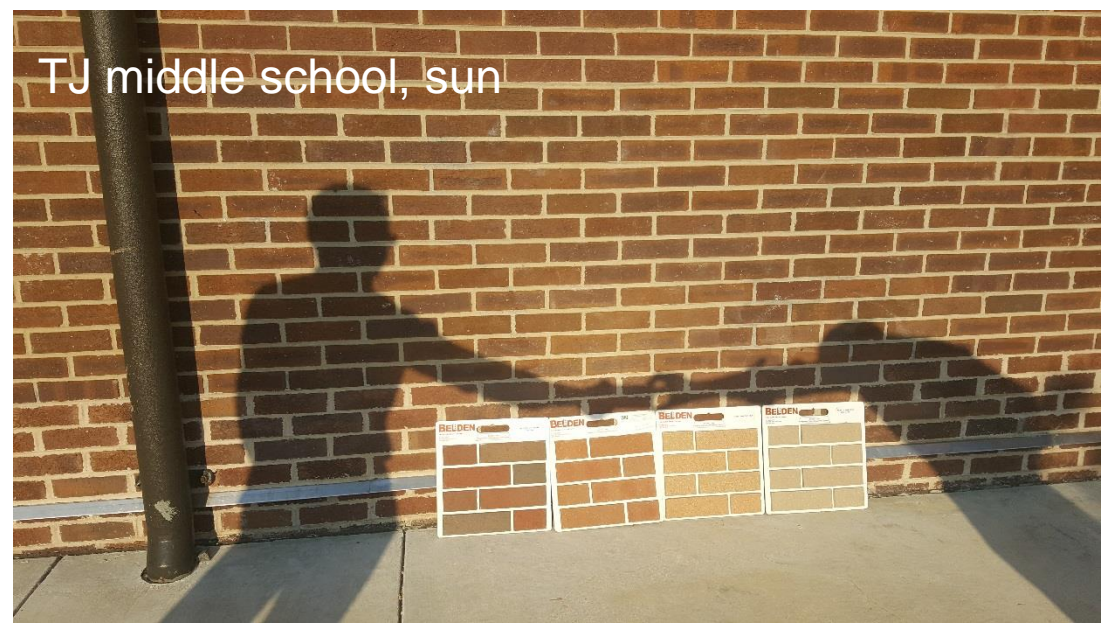
- MORE GLASS



Arlington Arbors, sun



TJ middle school, sun



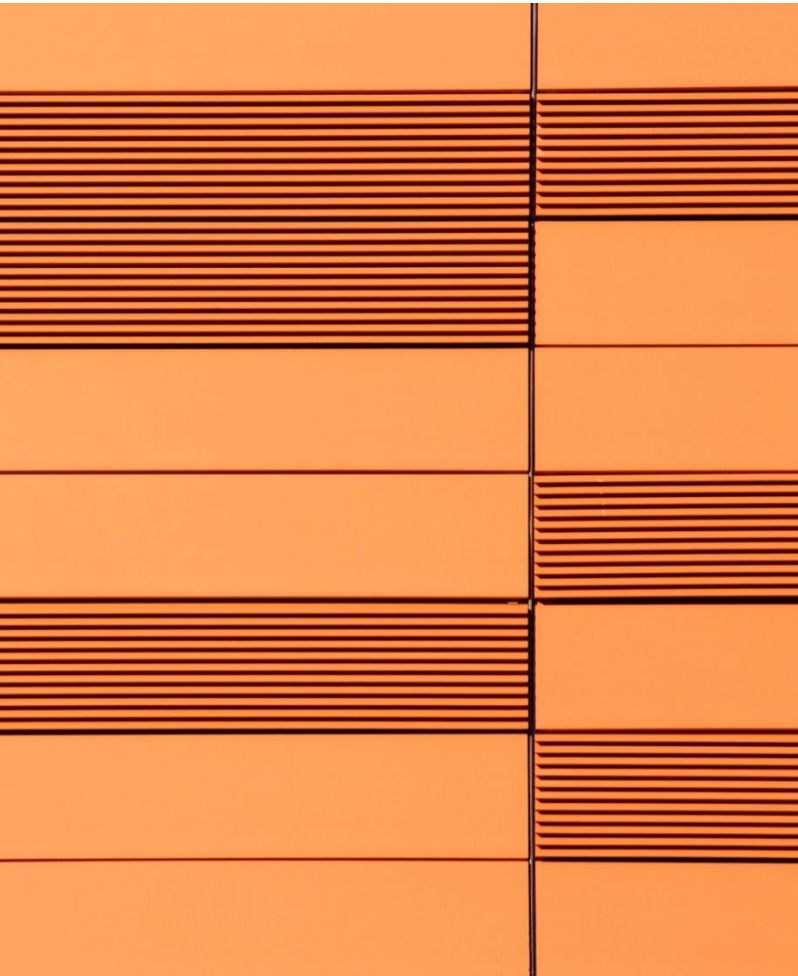
Arlington Arbors, shade



TJ middle school, shade















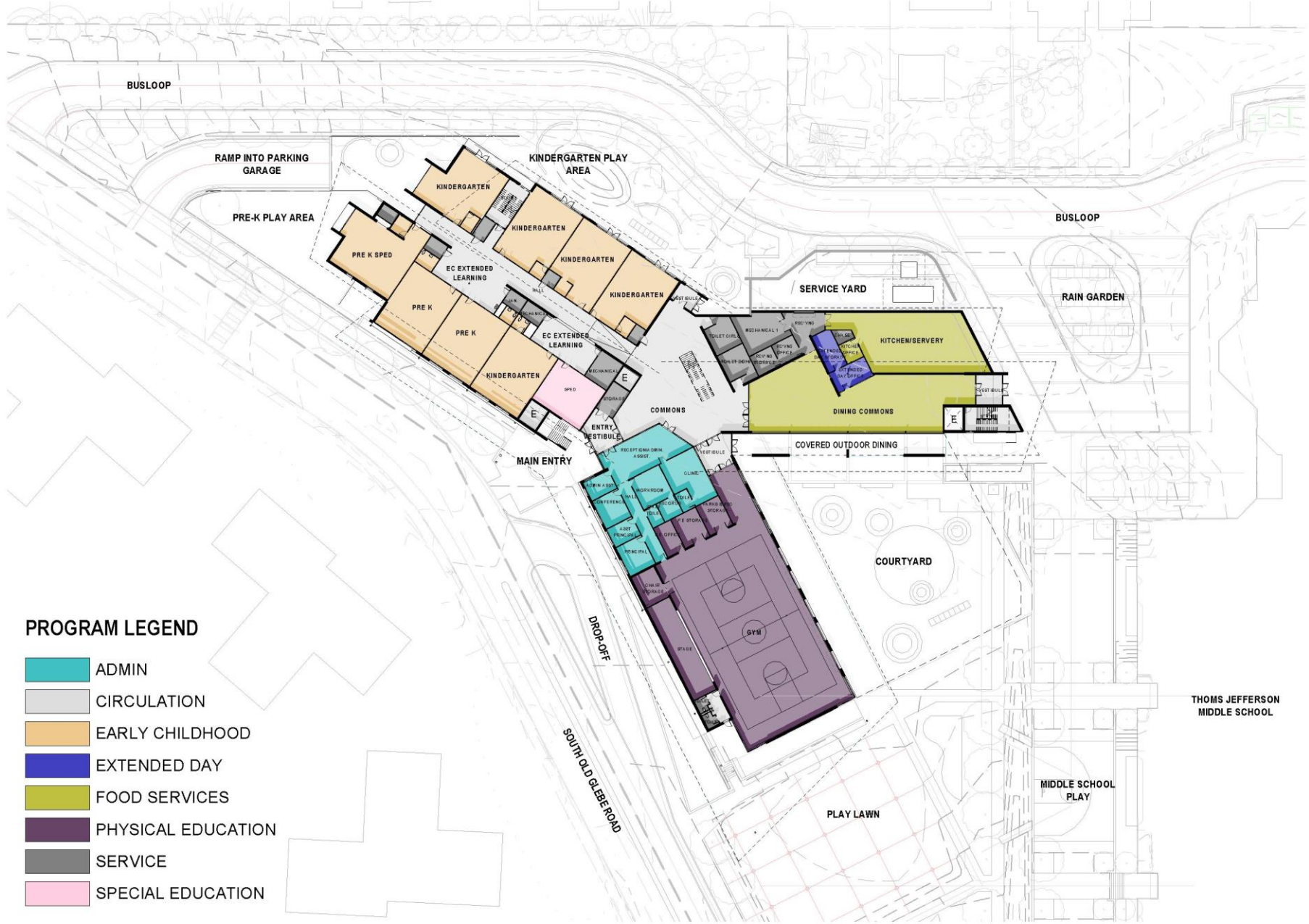








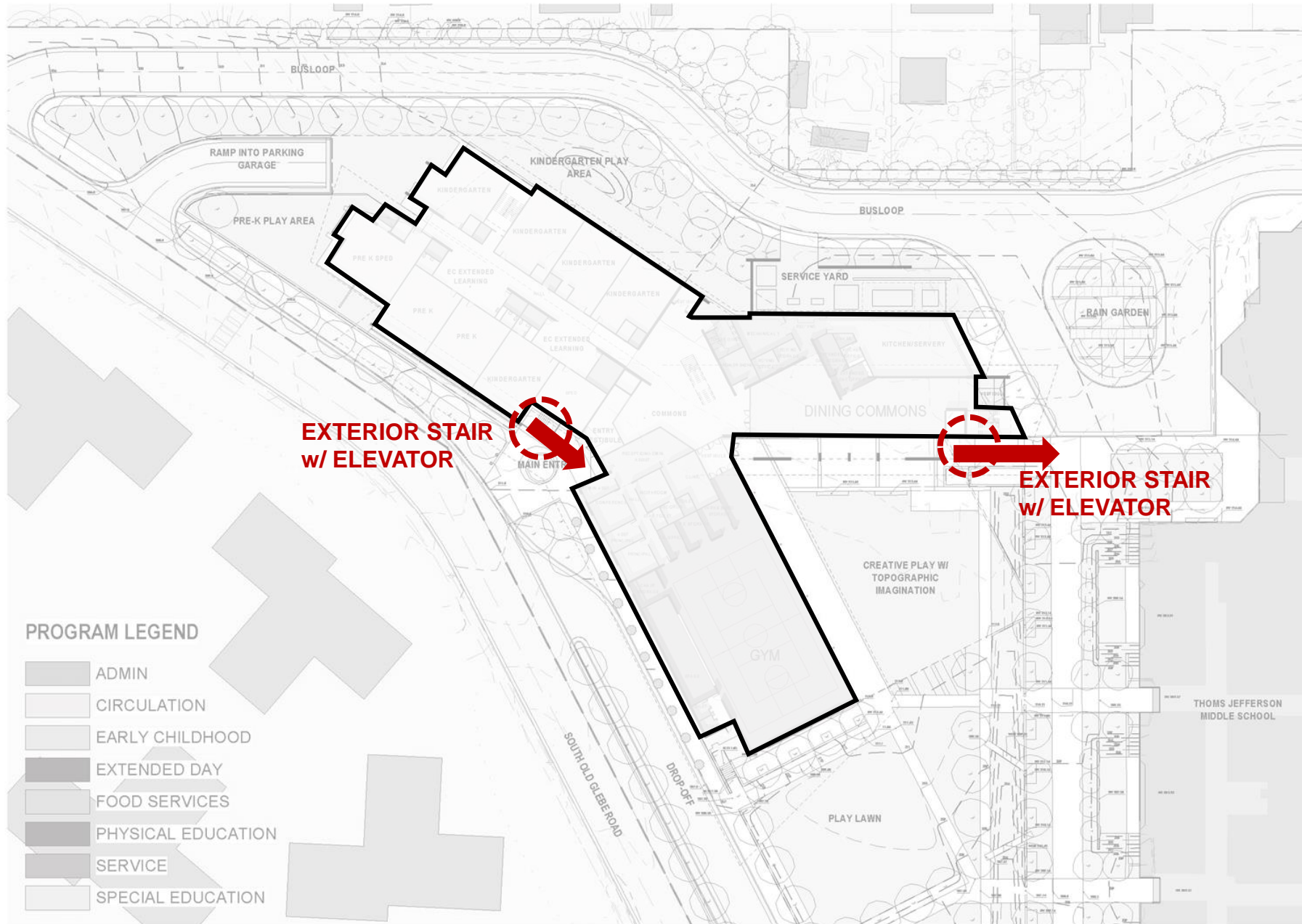




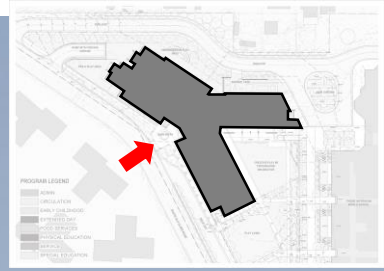
PROGRAM LEGEND

- ADMIN
- CIRCULATION
- EARLY CHILDHOOD
- EXTENDED DAY
- FOOD SERVICES
- PHYSICAL EDUCATION
- SERVICE
- SPECIAL EDUCATION

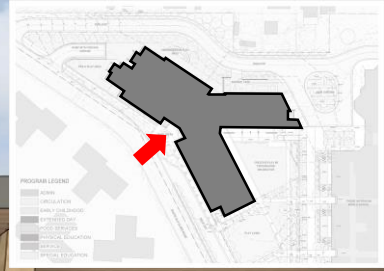
FIRST FLOOR PLAN

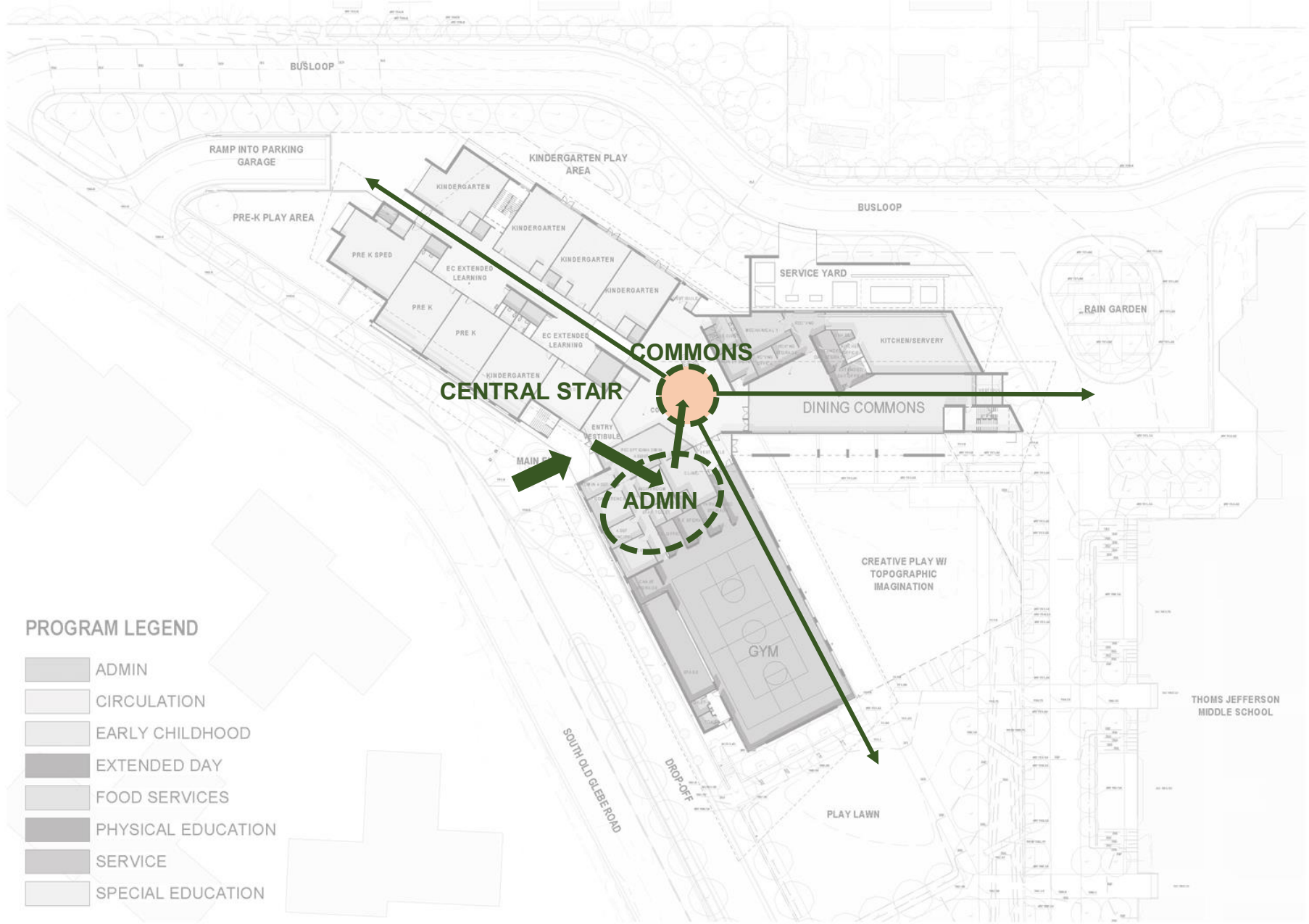


SITE PLAN – STAIR & ELEVATORS FROM GARAGE



PERSPECTIVE VIEW OF SOUTH ELEVATION





PROGRAM LEGEND

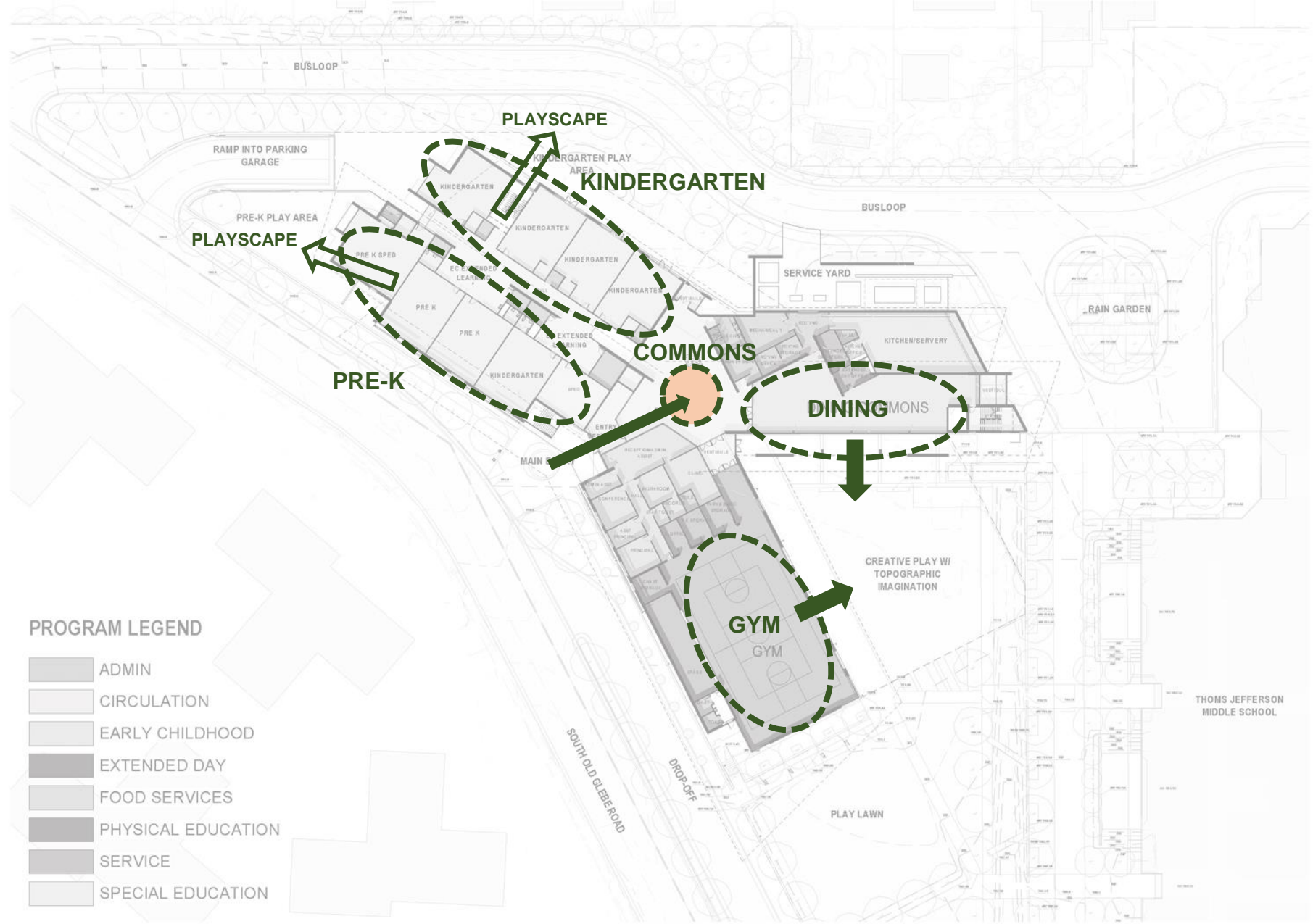
- ADMIN
- CIRCULATION
- EARLY CHILDHOOD
- EXTENDED DAY
- FOOD SERVICES
- PHYSICAL EDUCATION
- SERVICE
- SPECIAL EDUCATION

FIRST FLOOR PLAN



PRECEDENT IMAGES : STAIR





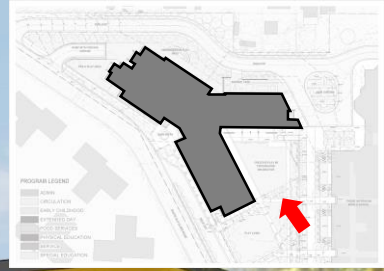
PROGRAM LEGEND

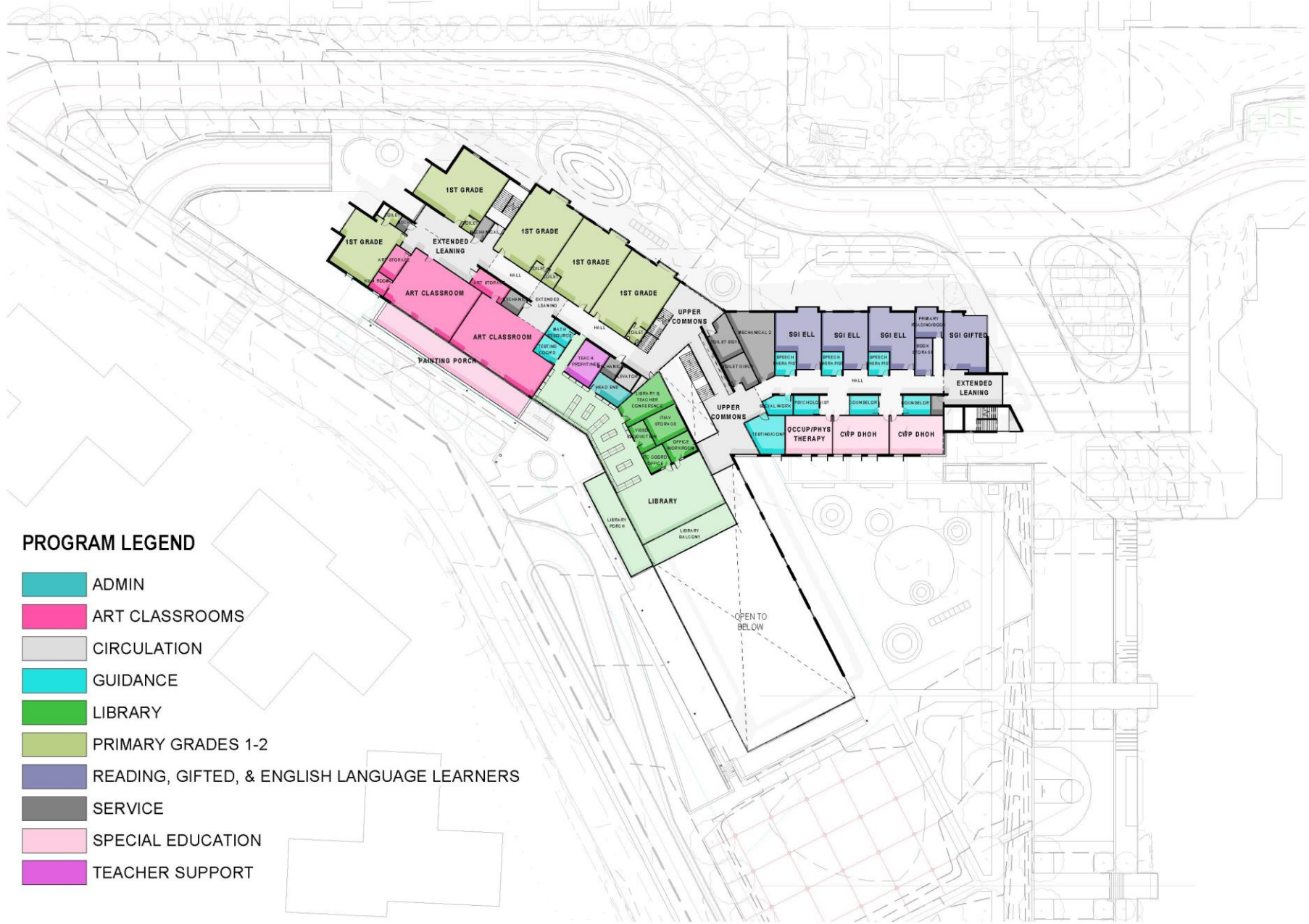
- ADMIN
- CIRCULATION
- EARLY CHILDHOOD
- EXTENDED DAY
- FOOD SERVICES
- PHYSICAL EDUCATION
- SERVICE
- SPECIAL EDUCATION

FIRST FLOOR PLAN



PERSPECTIVE VIEW OF DINING COMMONS

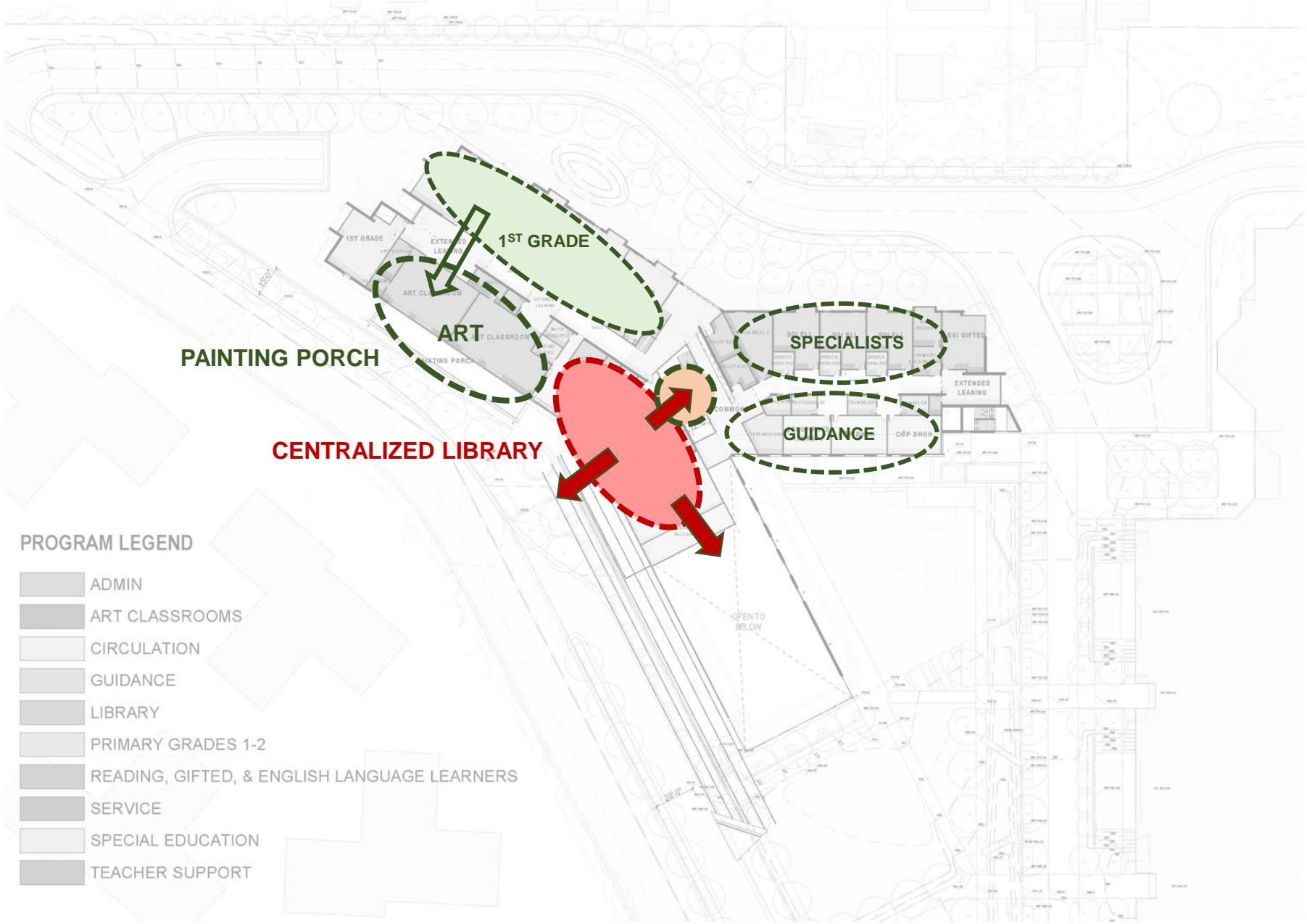




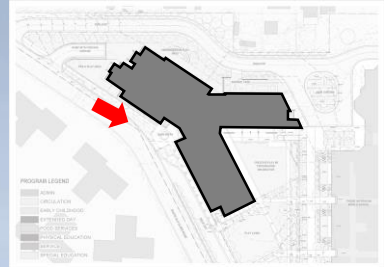
PROGRAM LEGEND

- ADMIN
- ART CLASSROOMS
- CIRCULATION
- GUIDANCE
- LIBRARY
- PRIMARY GRADES 1-2
- READING, GIFTED, & ENGLISH LANGUAGE LEARNERS
- SERVICE
- SPECIAL EDUCATION
- TEACHER SUPPORT

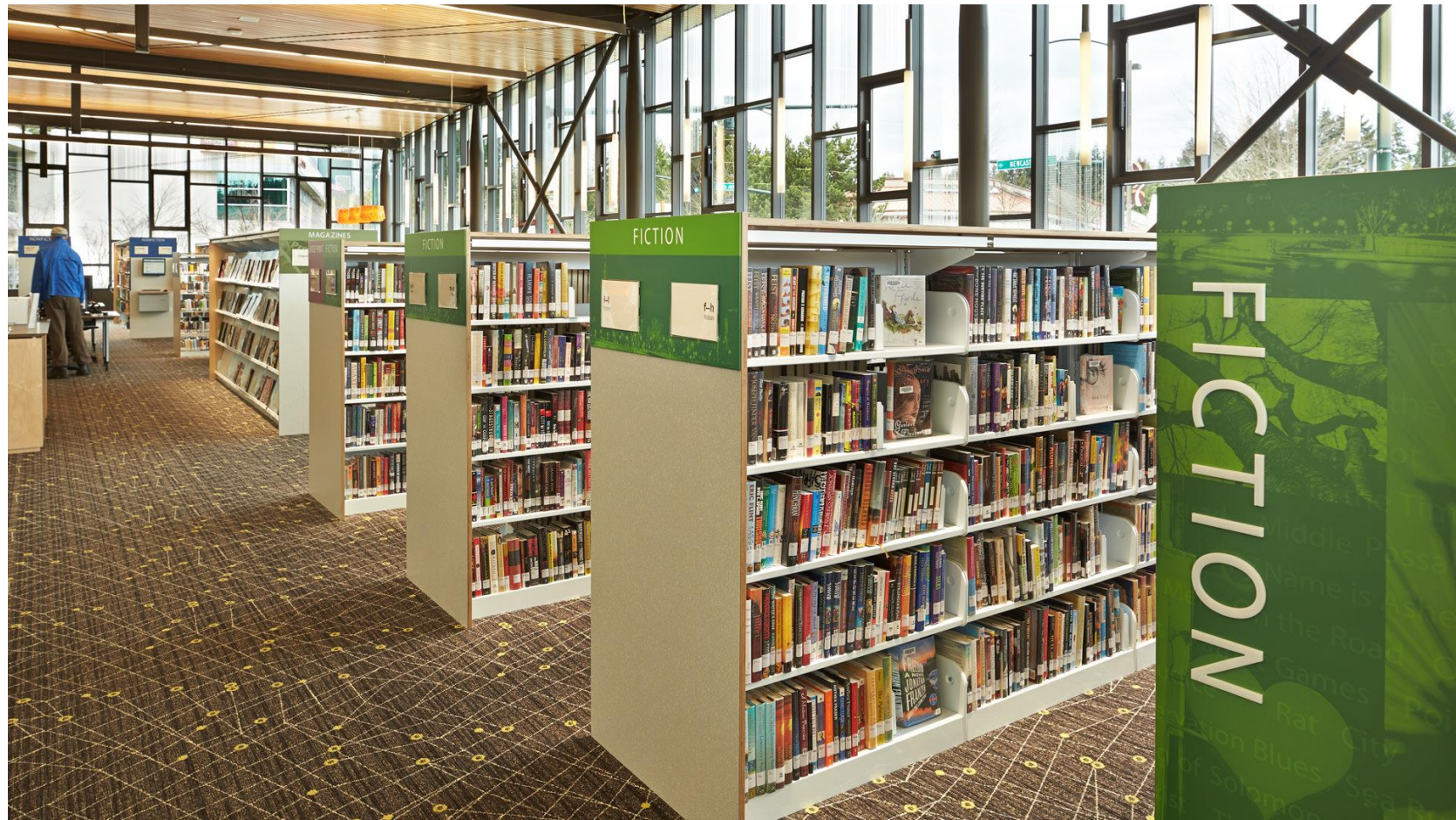
SECOND FLOOR PLAN

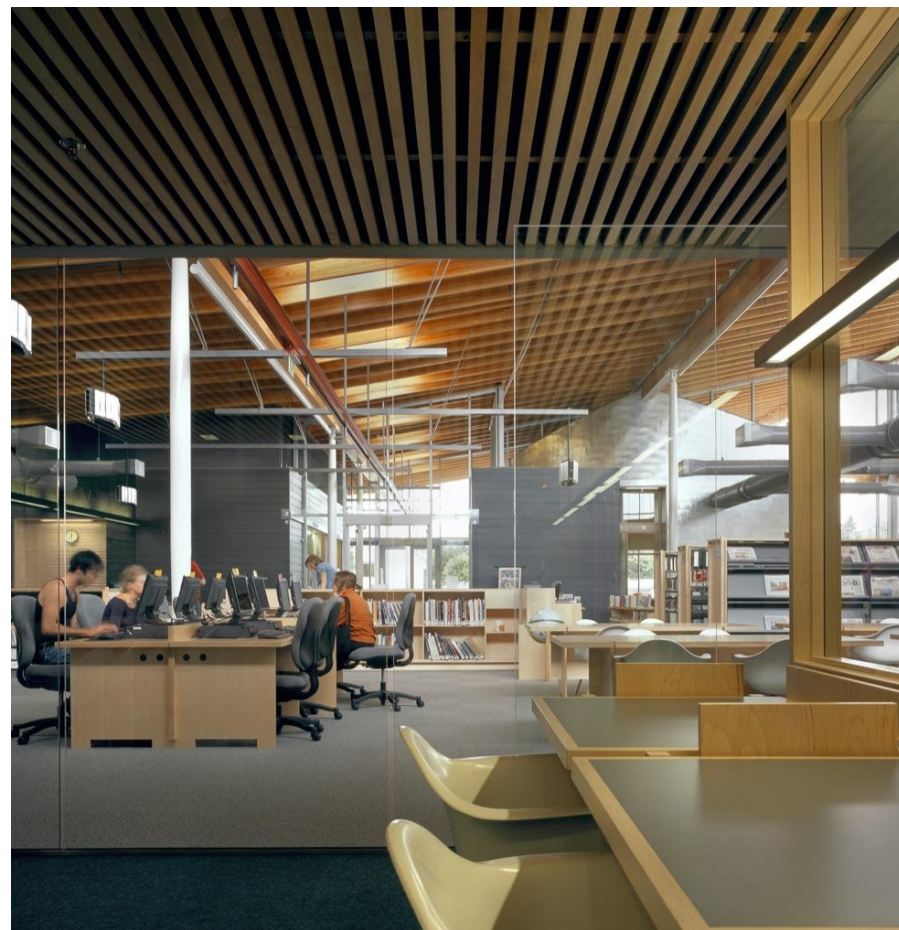


SECOND FLOOR PLAN





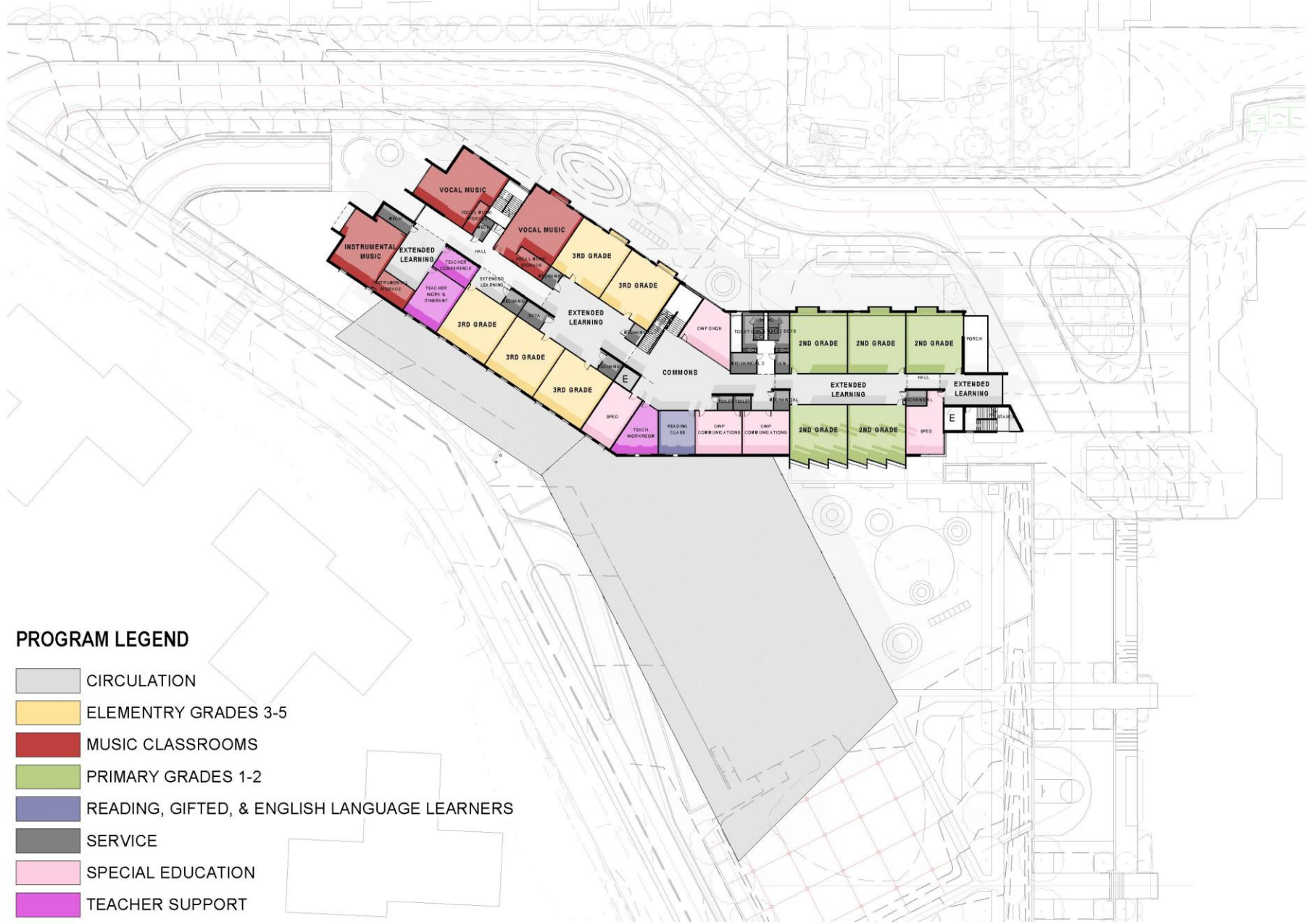








PERSPECTIVE VIEW OF LIBRARY



PROGRAM LEGEND

- CIRCULATION
- ELEMENTRY GRADES 3-5
- MUSIC CLASSROOMS
- PRIMARY GRADES 1-2
- READING, GIFTED, & ENGLISH LANGUAGE LEARNERS
- SERVICE
- SPECIAL EDUCATION
- TEACHER SUPPORT

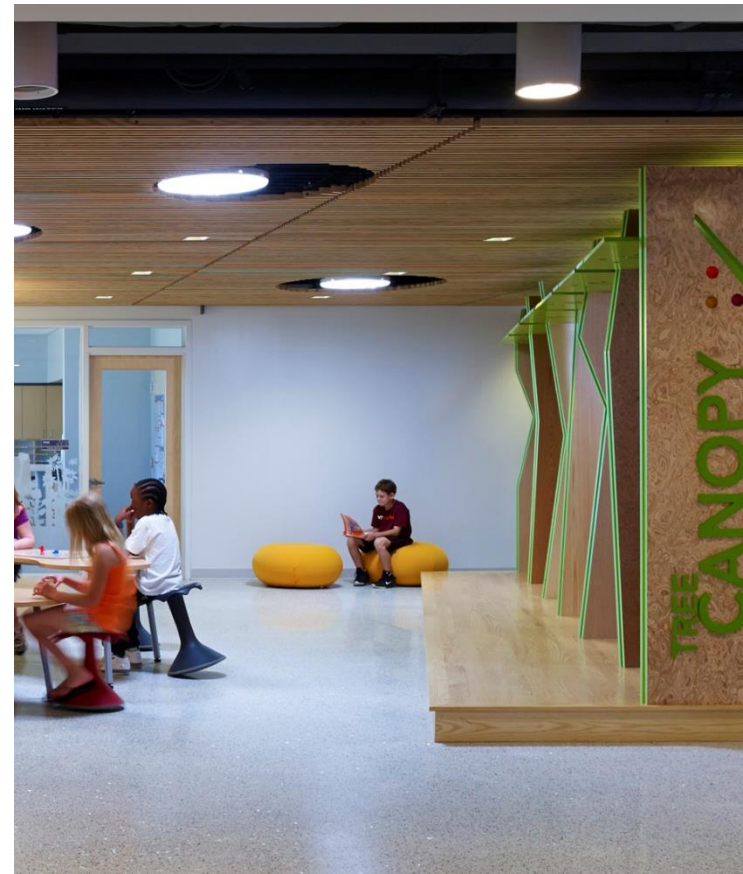
THIRD FLOOR PLAN

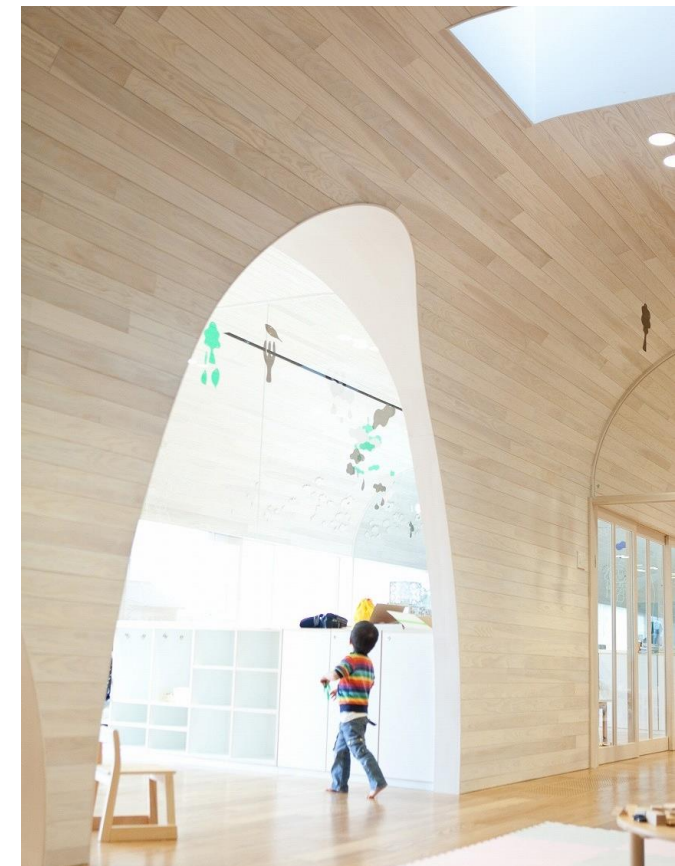


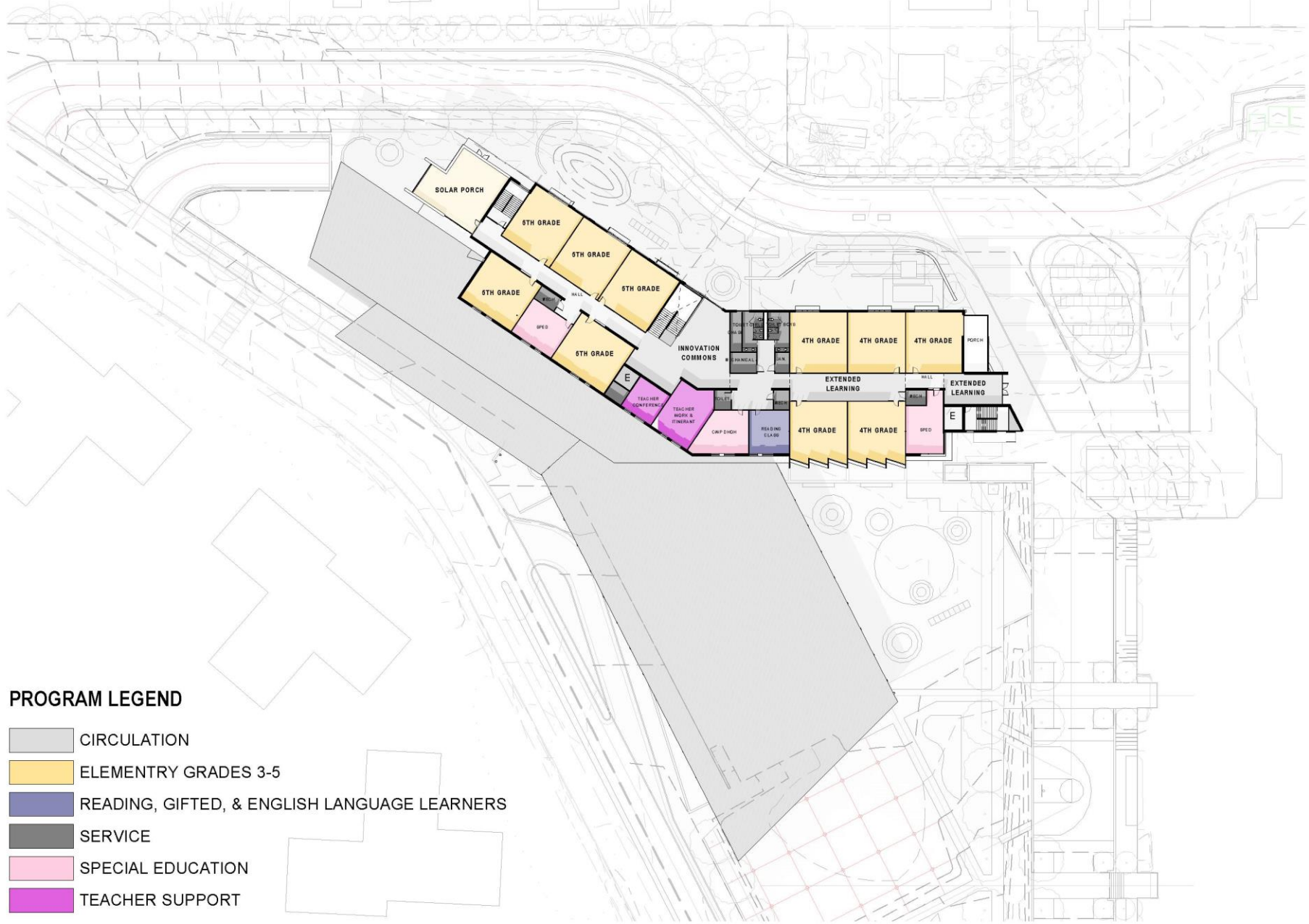
PROGRAM LEGEND

- CIRCULATION
- ELEMENTRY GRADES 3-5
- MUSIC CLASSROOMS
- PRIMARY GRADES 1-2
- READING, GIFTED, & ENGLISH LANGUAGE LEARNERS
- SERVICE
- SPECIAL EDUCATION
- TEACHER SUPPORT





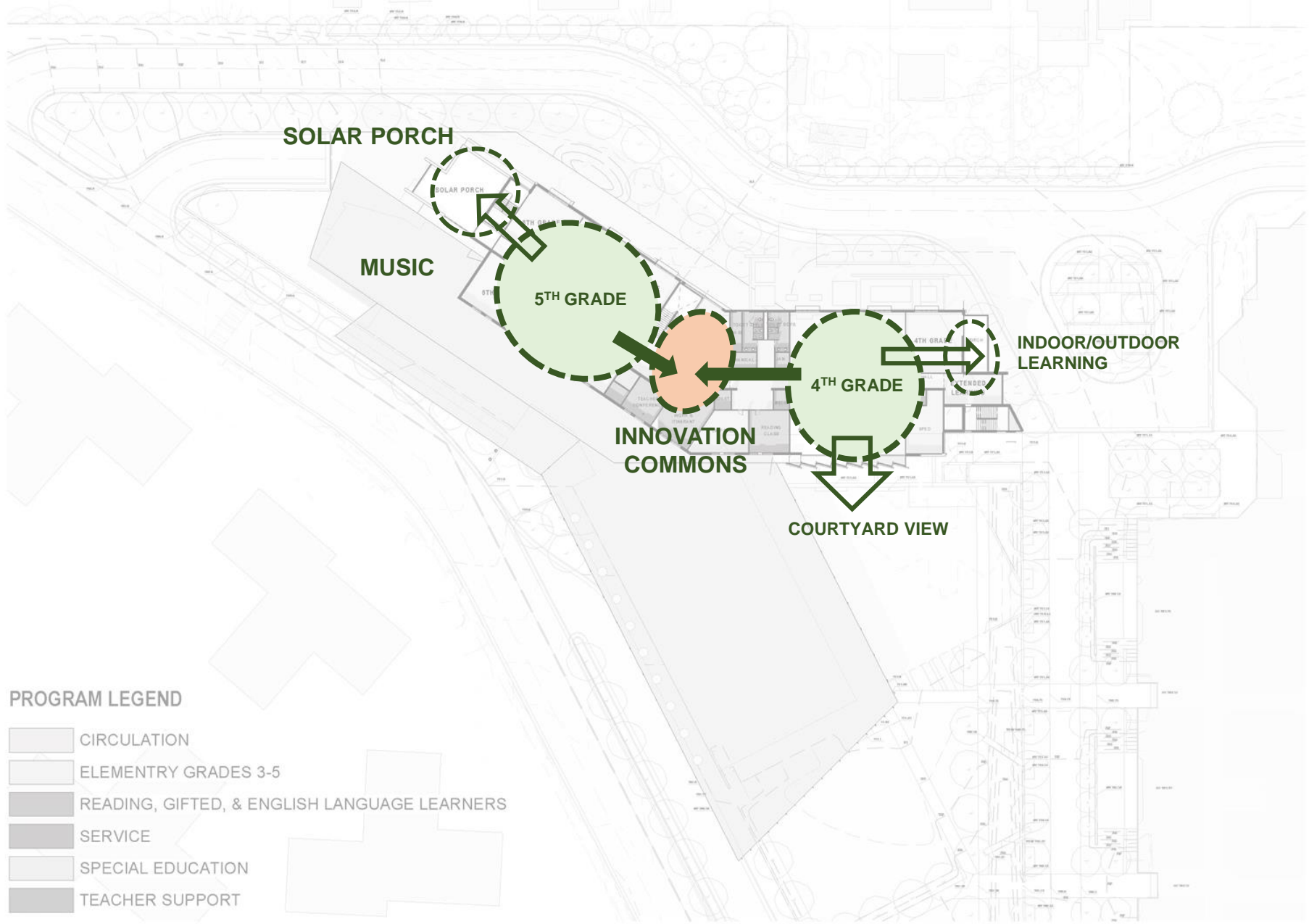




PROGRAM LEGEND

- CIRCULATION
- ELEMENTARY GRADES 3-5
- READING, GIFTED, & ENGLISH LANGUAGE LEARNERS
- SERVICE
- SPECIAL EDUCATION
- TEACHER SUPPORT

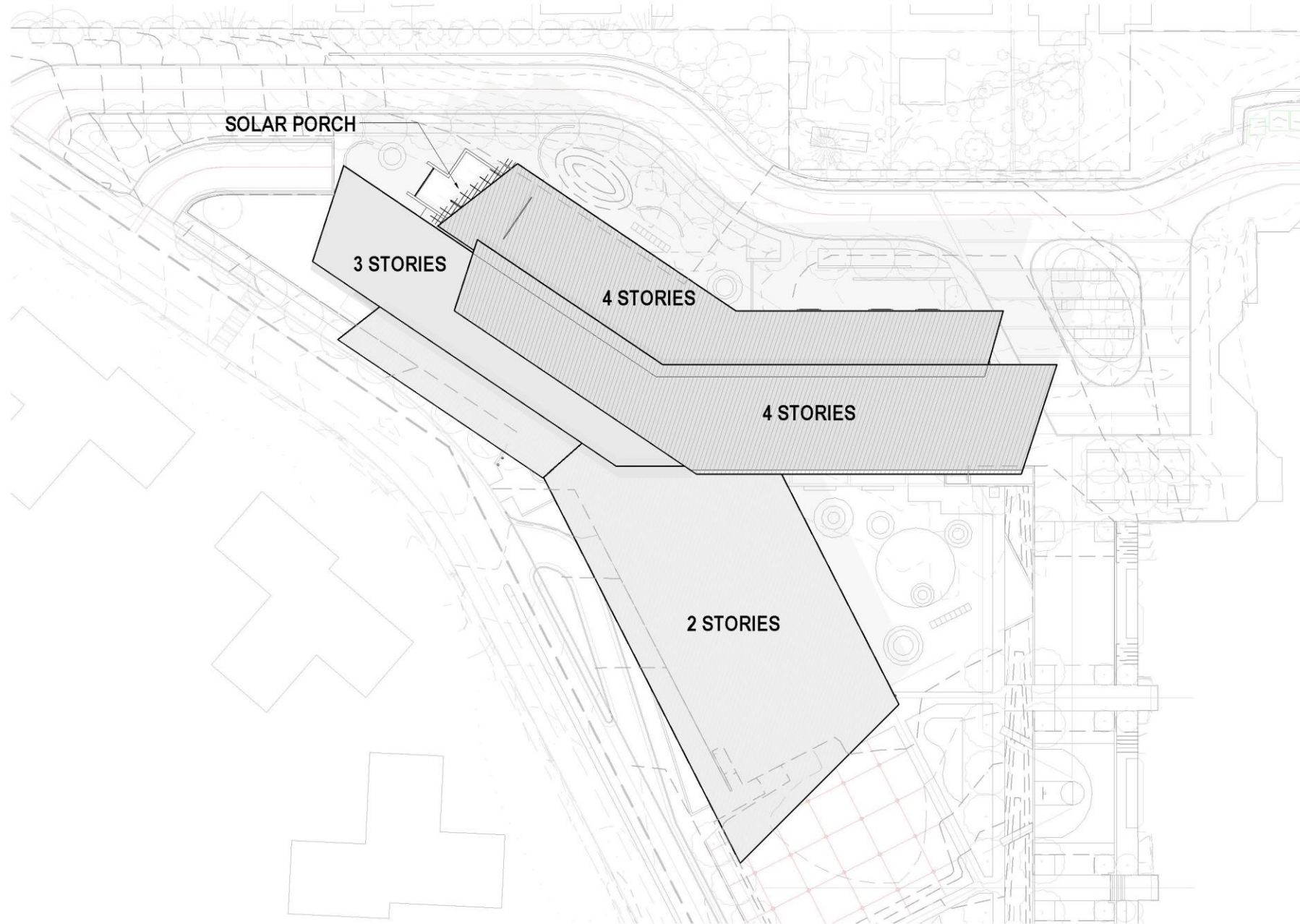
FOURTH FLOOR PLAN

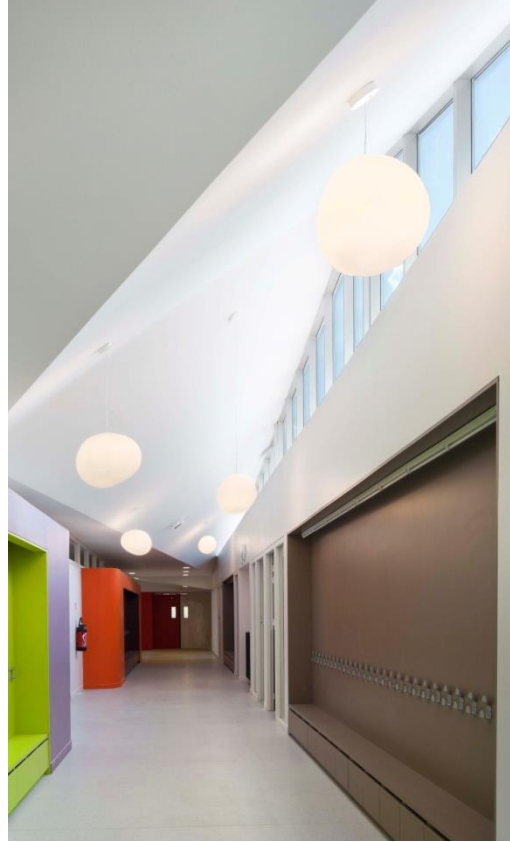


PROGRAM LEGEND

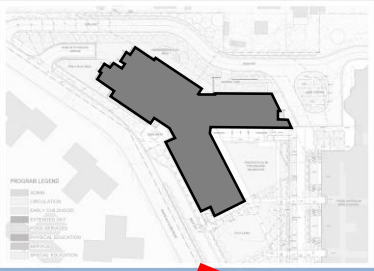
- CIRCULATION
- ELEMENTRY GRADES 3-5
- READING, GIFTED, & ENGLISH LANGUAGE LEARNERS
- SERVICE
- SPECIAL EDUCATION
- TEACHER SUPPORT

FOURTH FLOOR PLAN

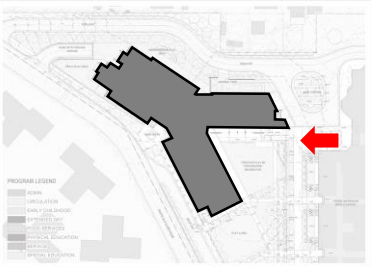




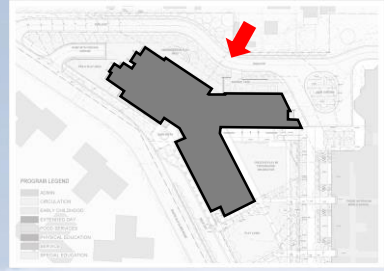








PERSPECTIVE VIEW OF EAST ELEVATION



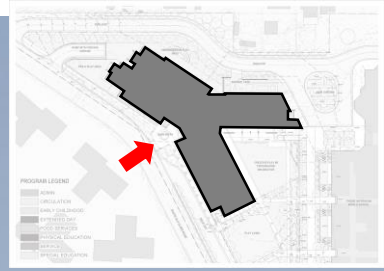
PERSPECTIVE VIEW OF NORTH ELEVATION



PROGRAM LEGEND

- EXISTING BUILDINGS
- EXISTING LANDSCAPE
- EXISTING UTILITIES
- EXISTING PAVEMENT
- EXISTING PLANTINGS
- EXISTING UTILITIES
- EXISTING UTILITIES
- EXISTING UTILITIES
- EXISTING UTILITIES

PERSPECTIVE VIEW OF NORTHWEST ELEVATION



NEXT STEPS

September 13 Community Forum

September 21 Joint BLPC - PFRC

October 6 Schematic Design info item to School Board

October 20 Schematic Design action item to School Board

ADJORN

For further information please contact:

APS Project Manager

Steve Stricker

571-220-0048

steven.stricker@apsva.us

County Project Manager

Marco Rivero

703-228-3572

mrivero@arlingtonva.us

Web links:

[APS Project Website](#)

[PFRC Project Website](#)

[Submit Public Comment and Sign up for Email Distribution](#)

Allocation of 2014 School Board Referendum

- In November 2014, voters approved school bond referendum of \$105.8 million “for capital project for school purposes”
- Since the FY 2015-2024 CIP several changes in allocation of bond funds to projects have occurred
- All changes to funding were approved by the School Board

Project	FY 2015-2024 CIP (\$ Millions)	Current (\$ Millions)
McKinley Addition	\$7.5	\$7.5
NES at Jefferson Site	\$50.25	\$40.3
Abingdon Addition	\$28.75	\$30.7
Secondary Seats TBD	\$4.0	N/A
Stratford Site	N/A	\$5.25
Wilson Site	N/A	\$7.5
Washington-Lee Interior Renovation	\$5.0	\$5.0
HVAC, Roofing, and Other Infrastructure Projects	\$10.3	\$9.56

Concept Design Approved Available Funding (\$ Millions)

Major Construction Bonds	\$40.30
Other (Operating Budget) ¹	\$ 0.80
Subtotal	\$41.10
County/School Board Joint Fund ²	
• Parking Deck and Other Improvements	\$12.00
• Other Community Improvements	\$ 5.90
Subtotal	\$17.90
Grand Total Funding Available	\$59.00

Notes:

1. Items that cannot be bond funded
2. Designated items agreed to by both Schools and the County, each entity paying 50% of the cost and each entity contributing equally to the Joint Fund