

**AUGUST 22, 2016**

**NEW ELEMENTARY SCHOOL  
AT THOMAS JEFFERSON MIDDLE SCHOOL**

**BLPC Meeting**

# Project Parameters

1. New Elementary School for the Henry Community
2. Support Strategic Plan Goal #4 – Provide Optimal Learning Environments
3. Address capacity by providing 725 seats
4. Open by start of school 2019
5. Multi-story building in northwest corner of site
6. Structured parking
7. Project cost \$59 million

# Allocation of 2014 School Board Referendum

- In November 2014, voters approved school bond referendum of \$105.8 million “for capital project for school purposes”
- Since the FY 2015-2024 CIP several changes in allocation of bond funds to projects have occurred
- All changes to funding were approved by the School Board

<b>Project</b>	<b>FY 2015-2024 CIP (\$ Millions)</b>	<b>Current (\$ Millions)</b>
McKinley Addition	\$7.5	\$7.5
NES at Jefferson Site	\$50.25	\$40.3
Abingdon Addition	\$28.75	\$30.7
Secondary Seats TBD	\$4.0	N/A
Stratford Site	N/A	\$5.25
Wilson Site	N/A	\$7.5
Washington-Lee Interior Renovation	\$5.0	\$5.0
HVAC, Roofing, and Other Infrastructure Projects	\$10.3	\$9.56

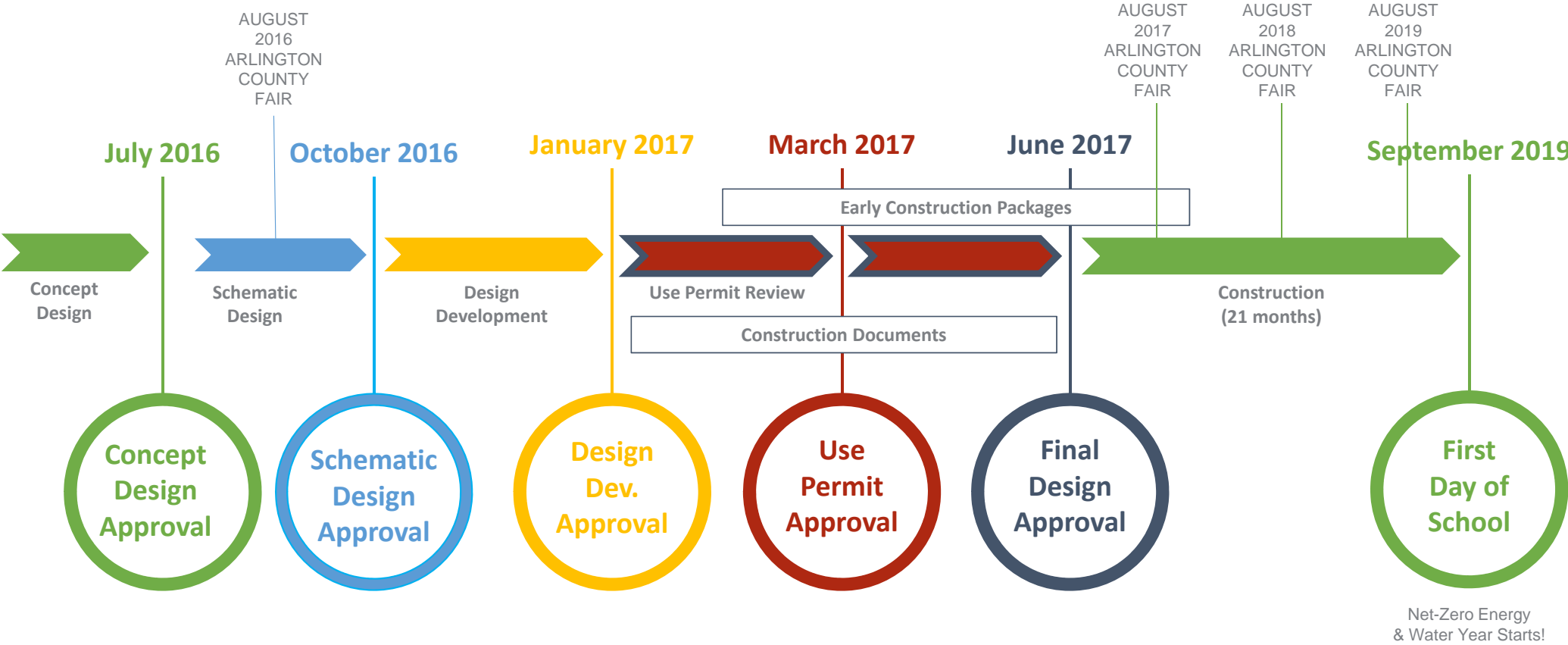
# Concept Design Approved Available Funding (\$ Millions)

Major Construction Bonds	\$40.30
Other (Operating Budget) <sup>1</sup>	\$ 0.80
<b>Subtotal</b>	<b>\$41.10</b>
County/School Board Joint Fund <sup>2</sup>	
• Parking Deck and Other Improvements	\$12.00
• Other Community Improvements	\$ 5.90
<b>Subtotal</b>	<b>\$17.90</b>
<b>Grand Total Funding Available</b>	<b>\$59.00</b>

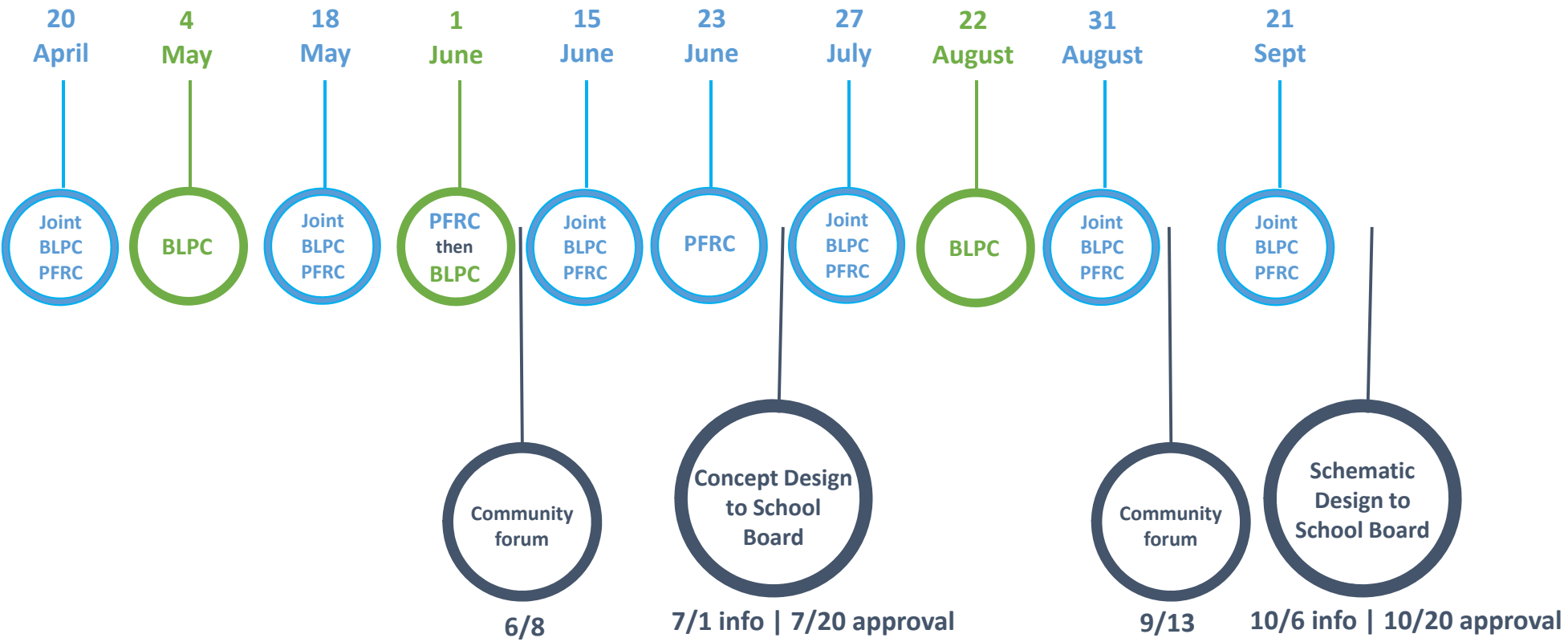
Notes:

1. Items that cannot be bond funded
2. Designated items agreed to by both Schools and the County, each entity paying 50% of the cost and each entity contributing equally to the Joint Fund

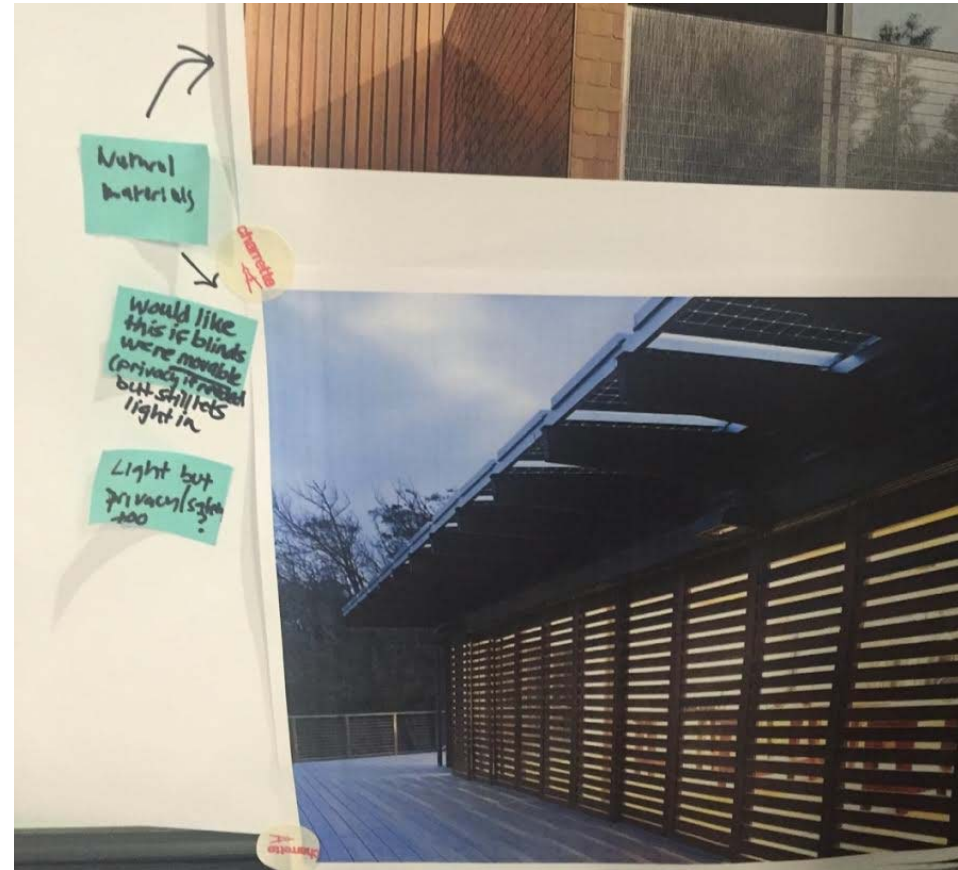
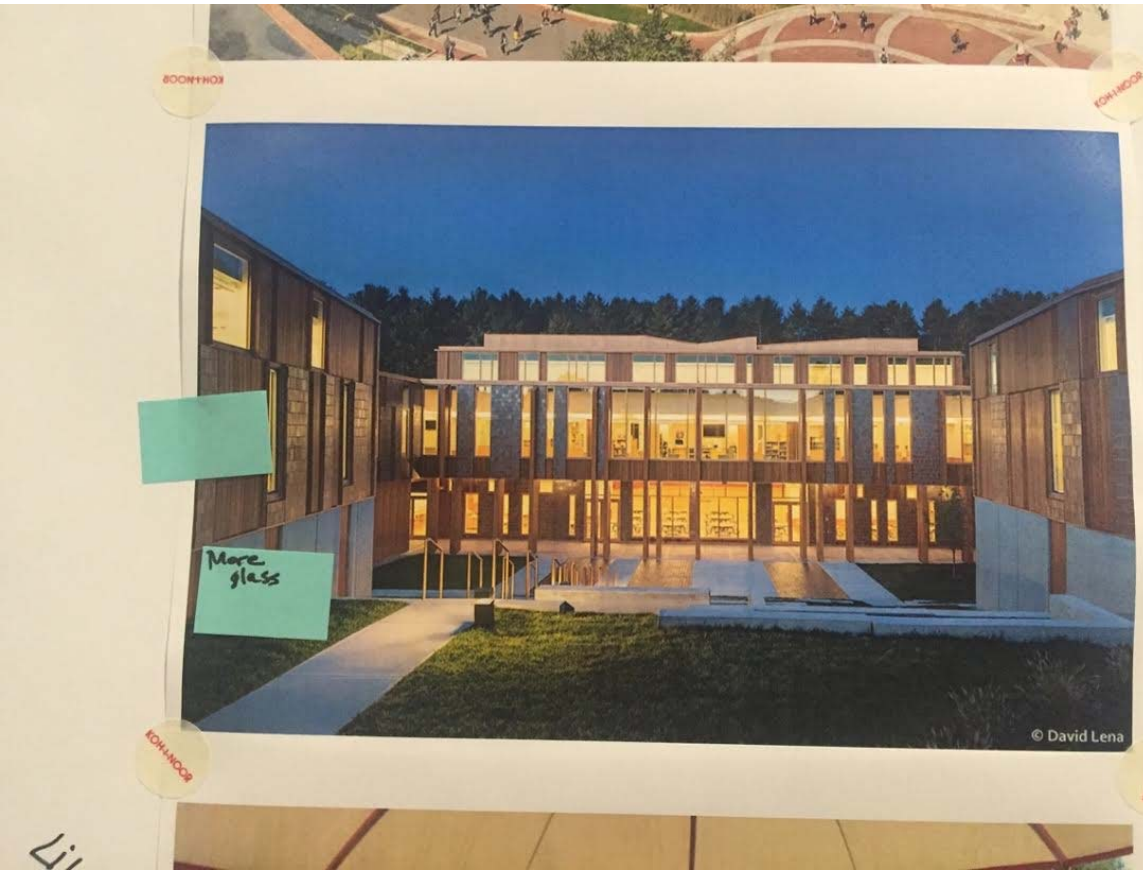
# General Schedule | Timeline



# General Schedule | Timeline













- GREEN SPACE ROOF
- CREATIVE FUN - LIKE THE WATER FEATURE
- GREAT PLAY SPACE
- GOOD PLAY SPACE
- IF THIS IS IT, NOT ENOUGH VARIETY
- NEED EQUIPMENT THAT BUILDS STRENGTH



- GOOD LIGHT
- LOVE GLASS, LIGHT, INDOOR, OUTDOOR
- YES TO LIGHT
- LIKE THE GLASS AND LIGHT
- GOOD LIGHT
- NO TO CORRUGATED METALS



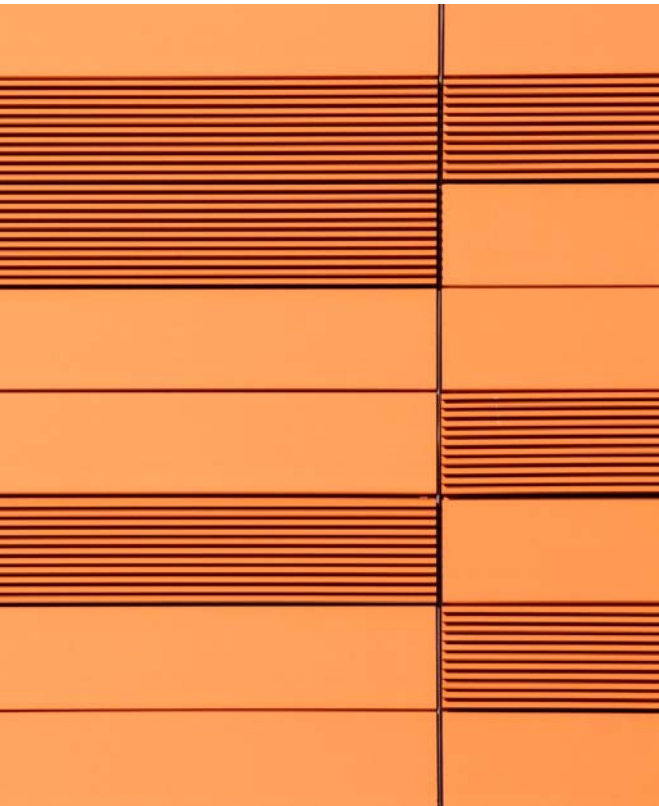
- OUTDOOR SPACE
- LIKE THE INTEGRATION OF INDOOR AND OUTDOOR
- LOTS OF WINDOWS - LETS OUTSIDE IN
- LIKE THE COURTYARD INDOOR/OUTDOOR INTEGRATION
- TOO MUCH PAVEMENT



- MORE GLASS

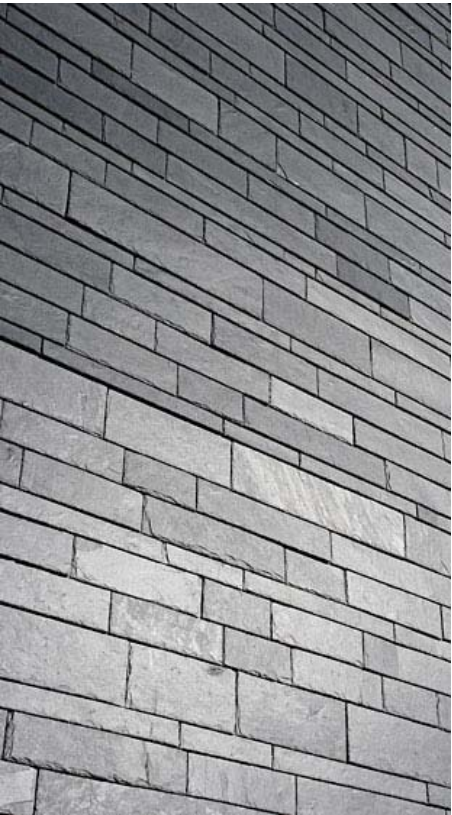








# MATERIALS: TERRACOTTA & BRICK







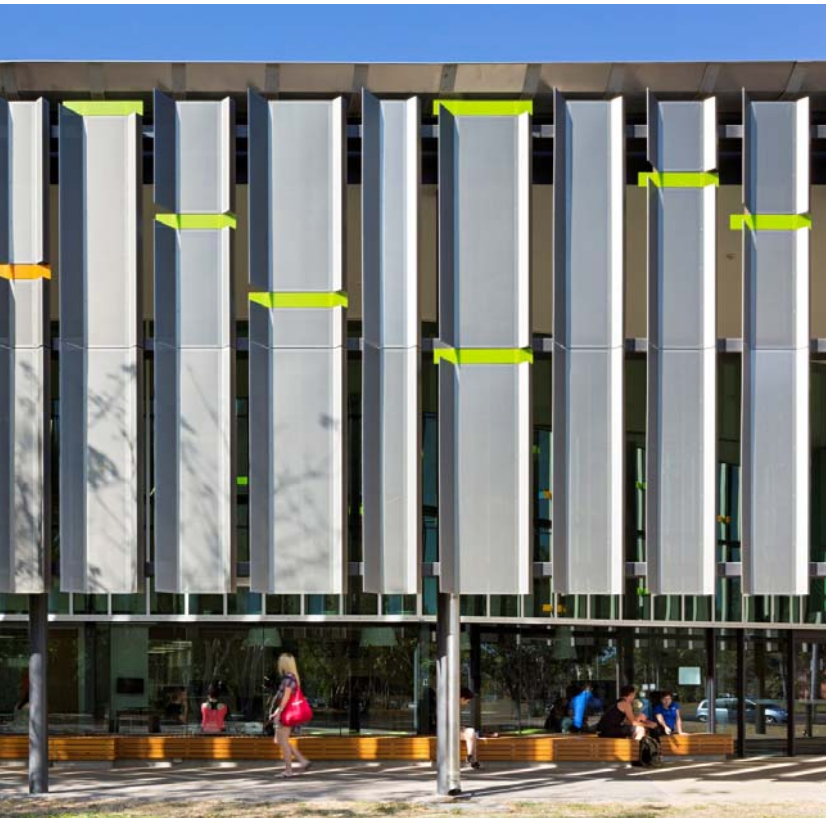










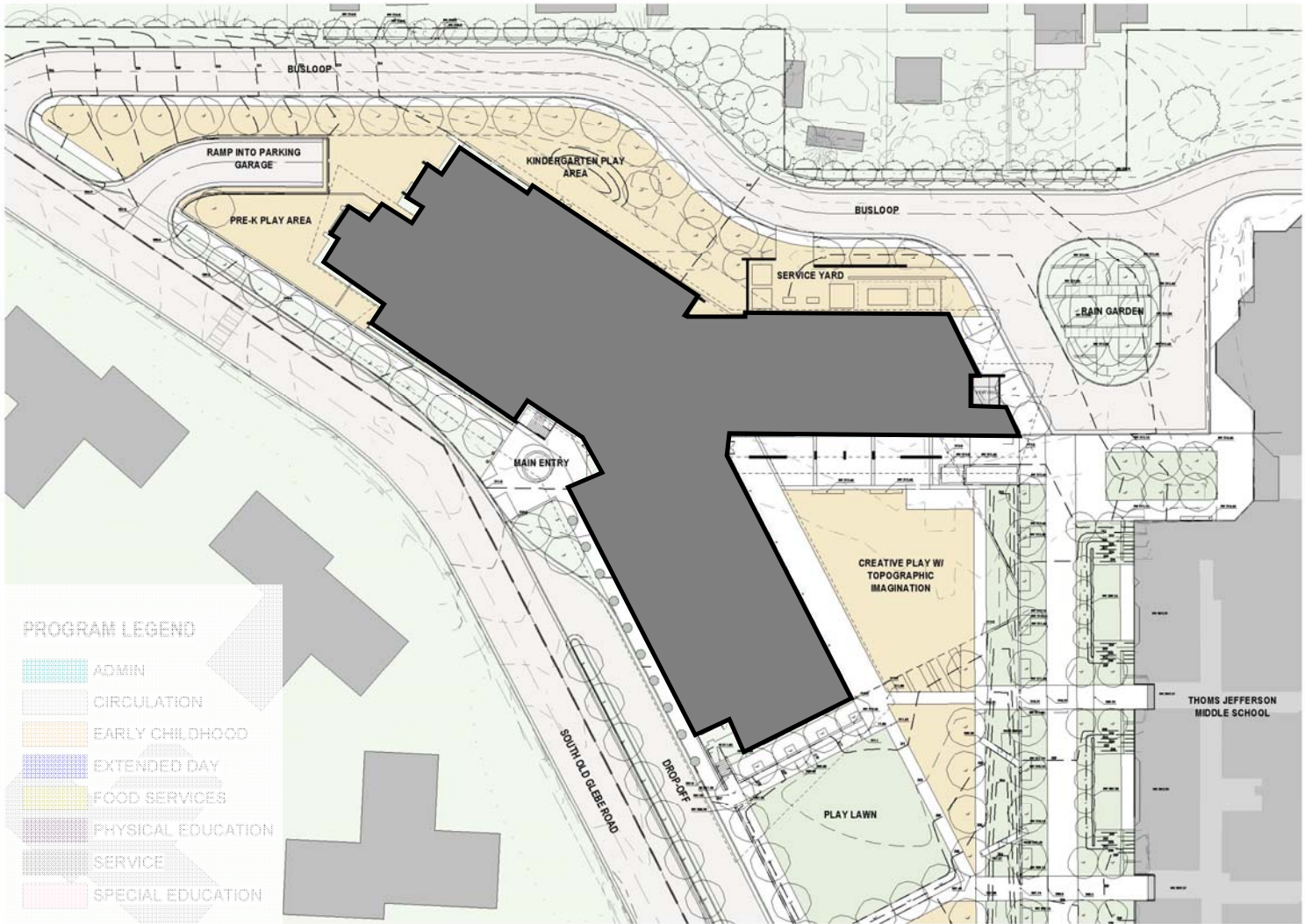


# MATERIALS: SOUTHERN SUNSHADES





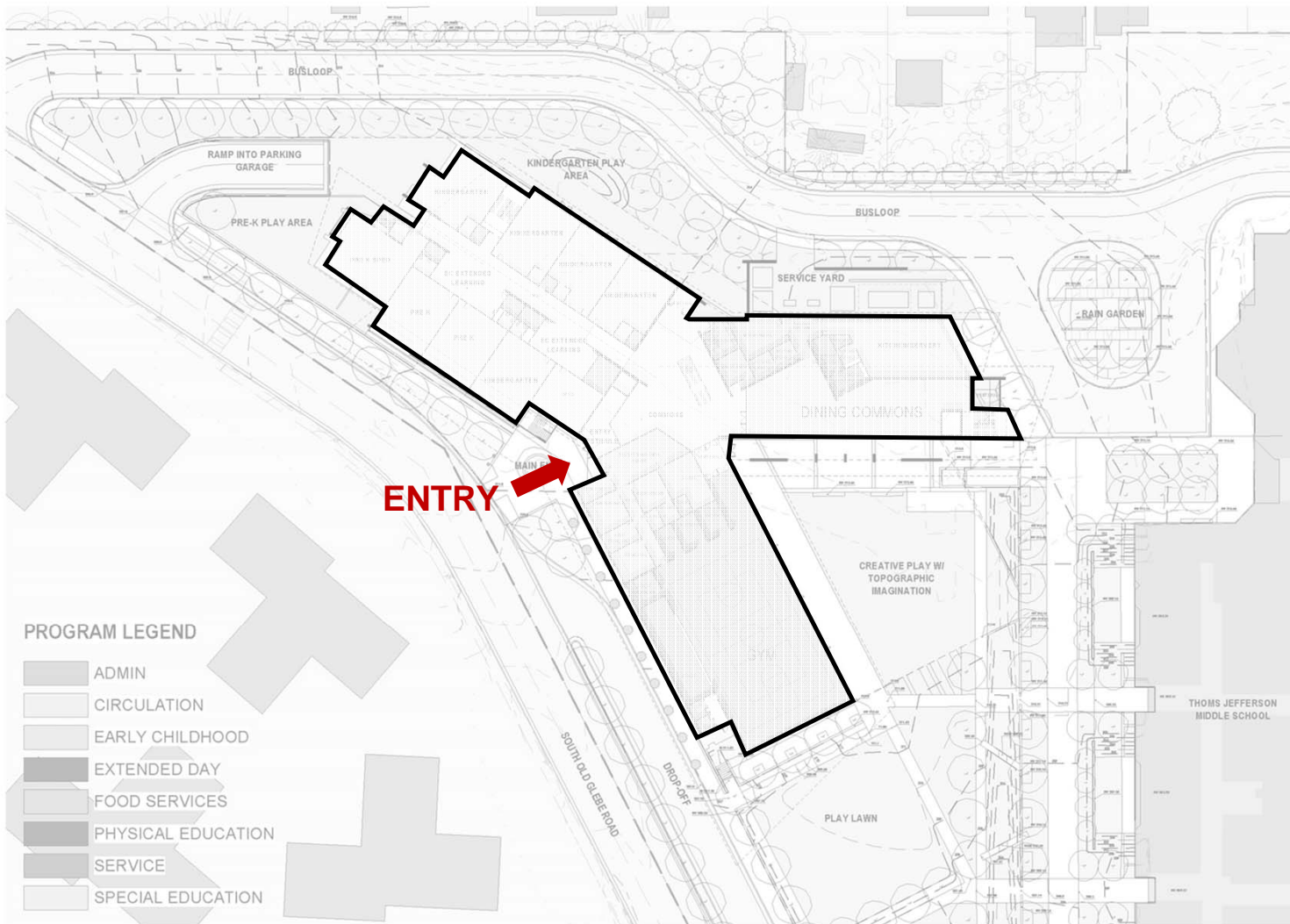


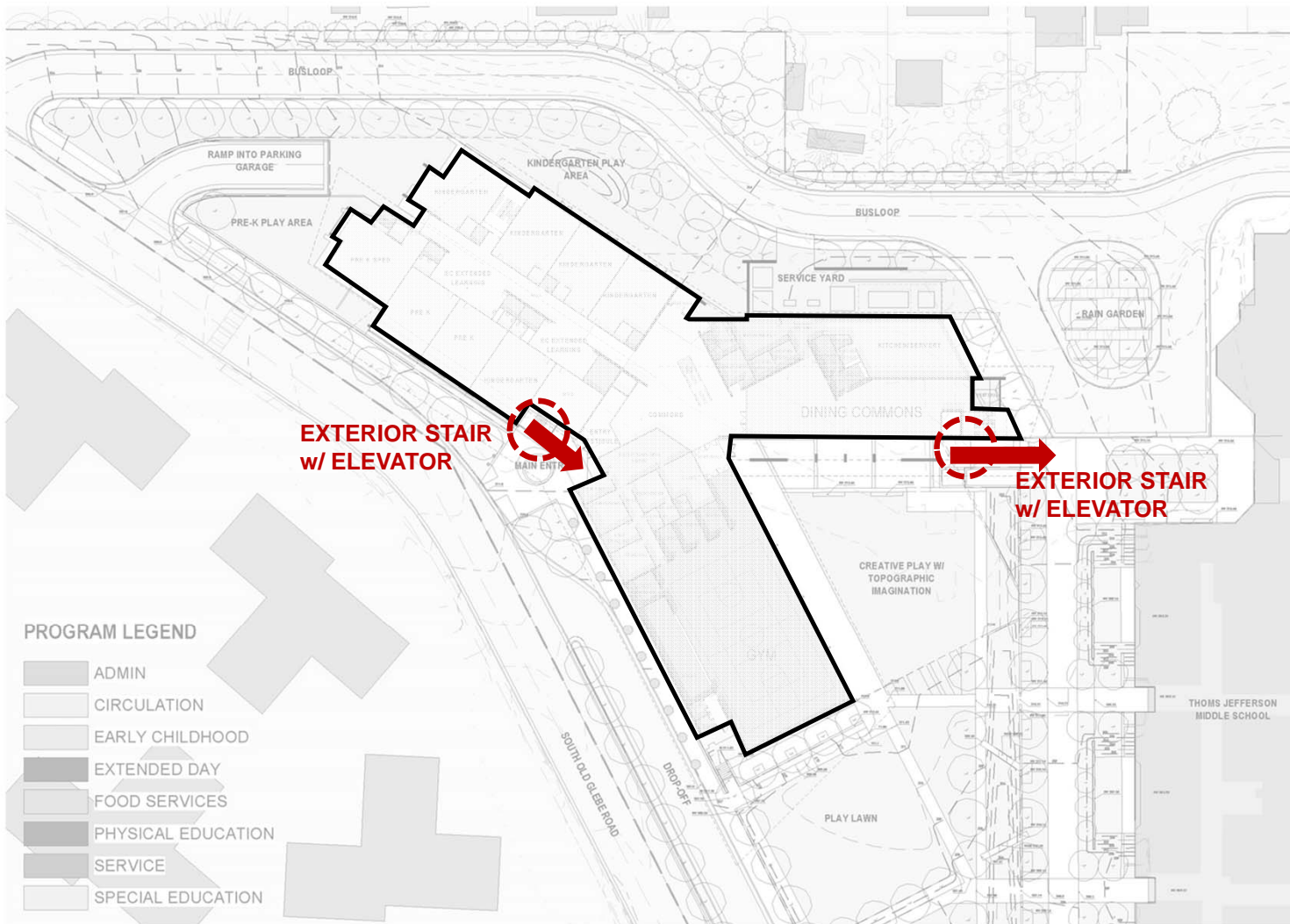


PROGRAM LEGEND

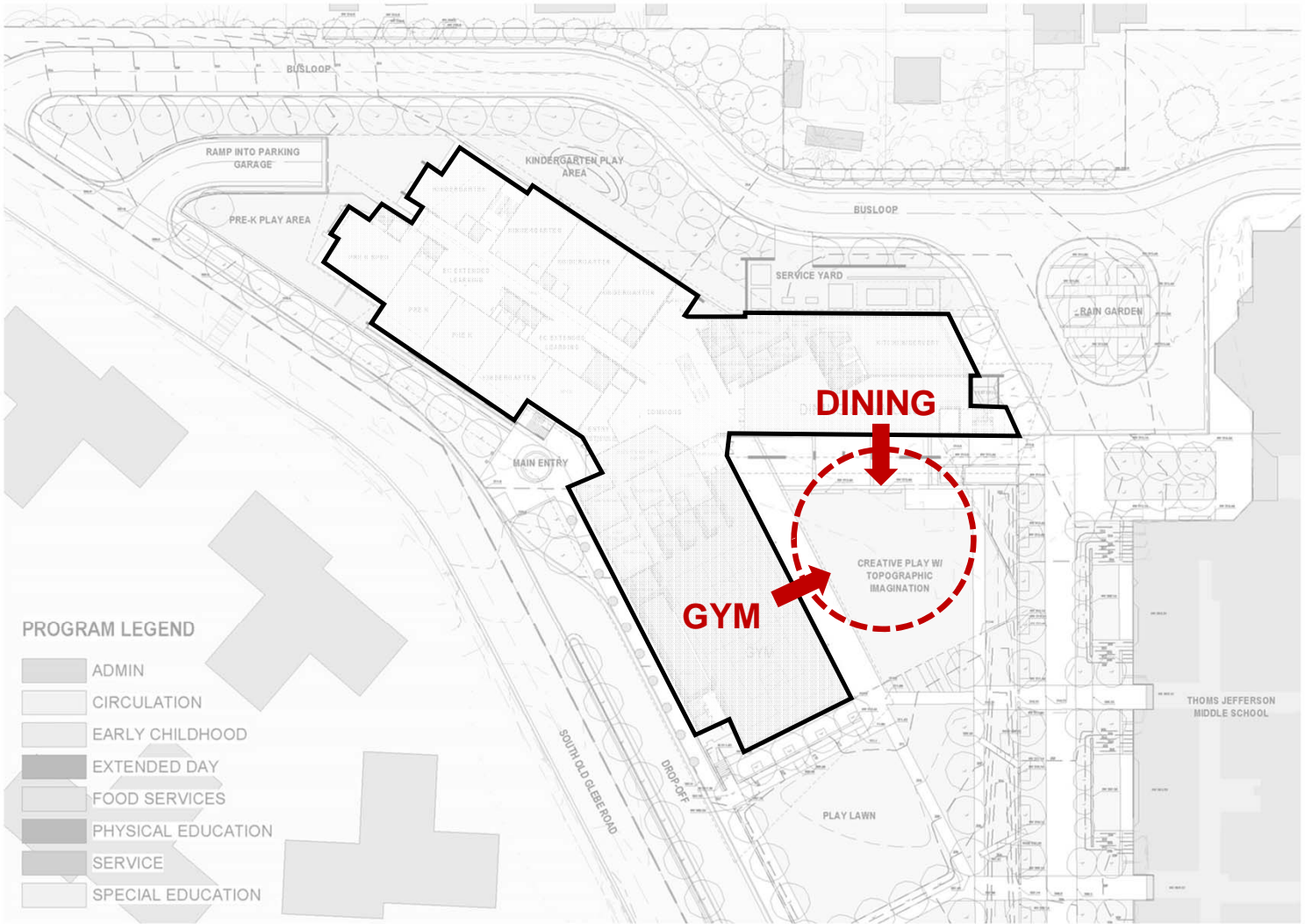
- ADMIN
- CIRCULATION
- EARLY CHILDHOOD
- EXTENDED DAY
- FOOD SERVICES
- PHYSICAL EDUCATION
- SERVICE
- SPECIAL EDUCATION

# SITE PLAN

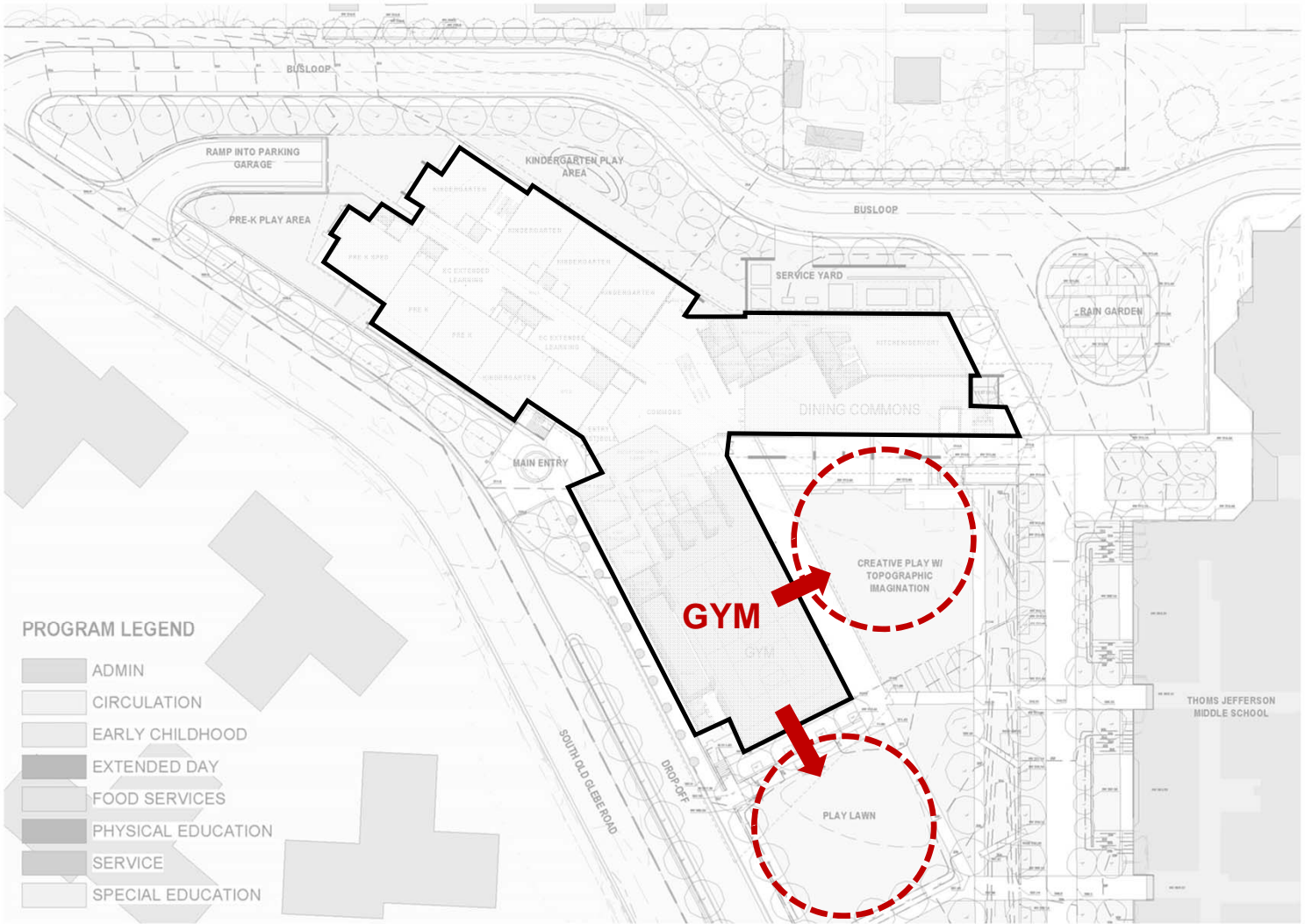




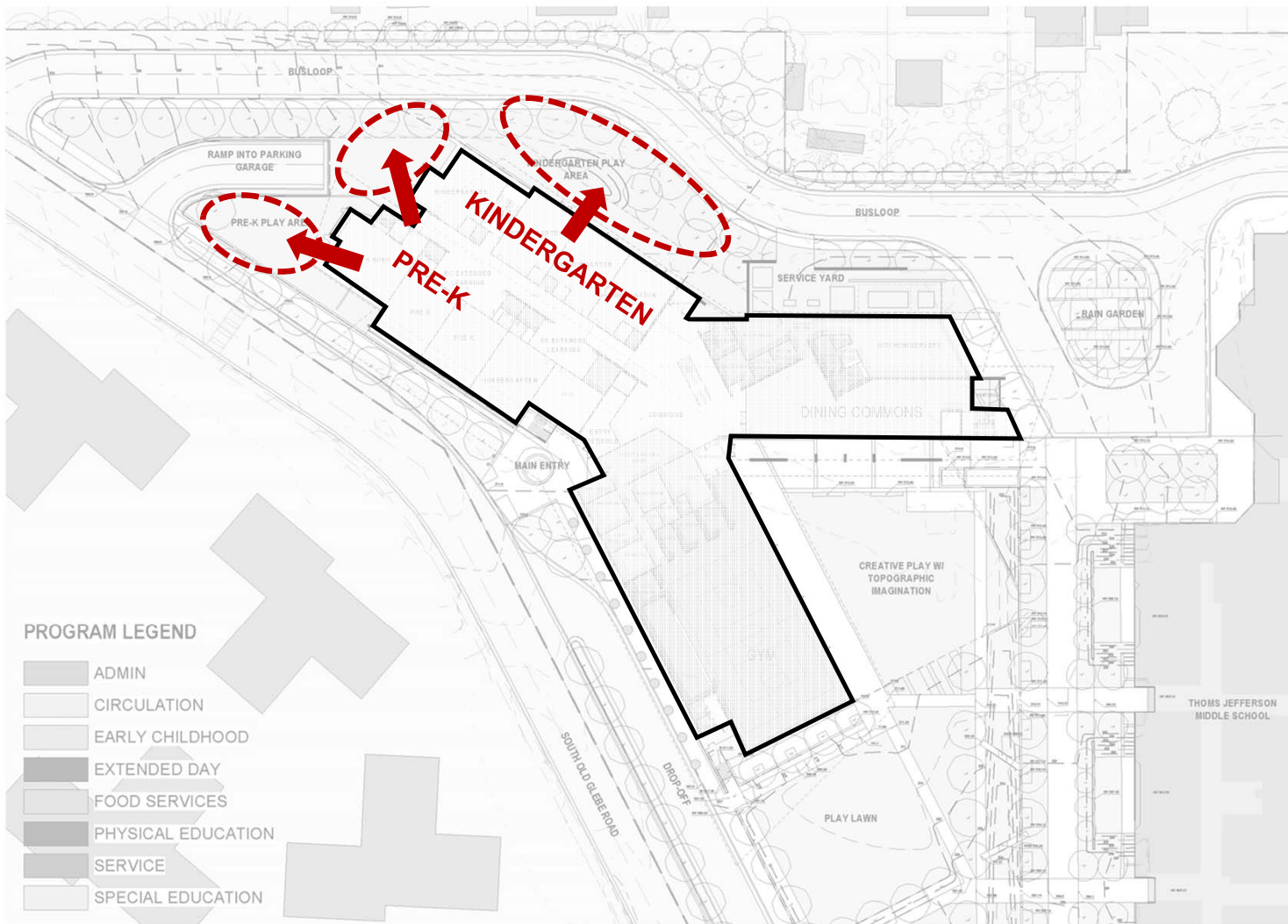
# SITE PLAN – STAIR & ELEVATORS FROM GARAGE



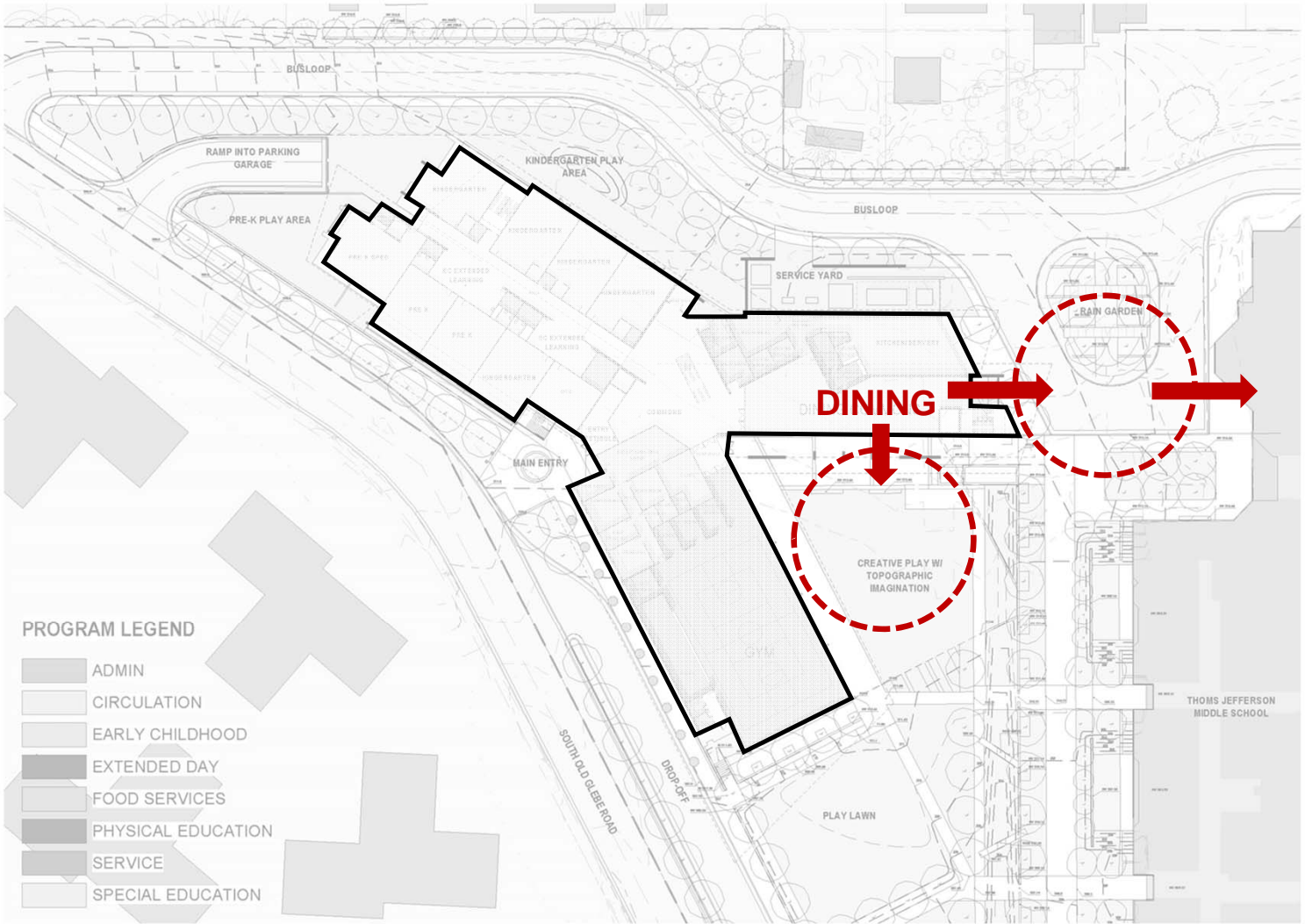
# SITE PLAN – MAIN COURTYARD



# SITE PLAN - GYM



# SITE PLAN – KINDERGARTEN PLAYSCAPE



# GARAGE LEVELS



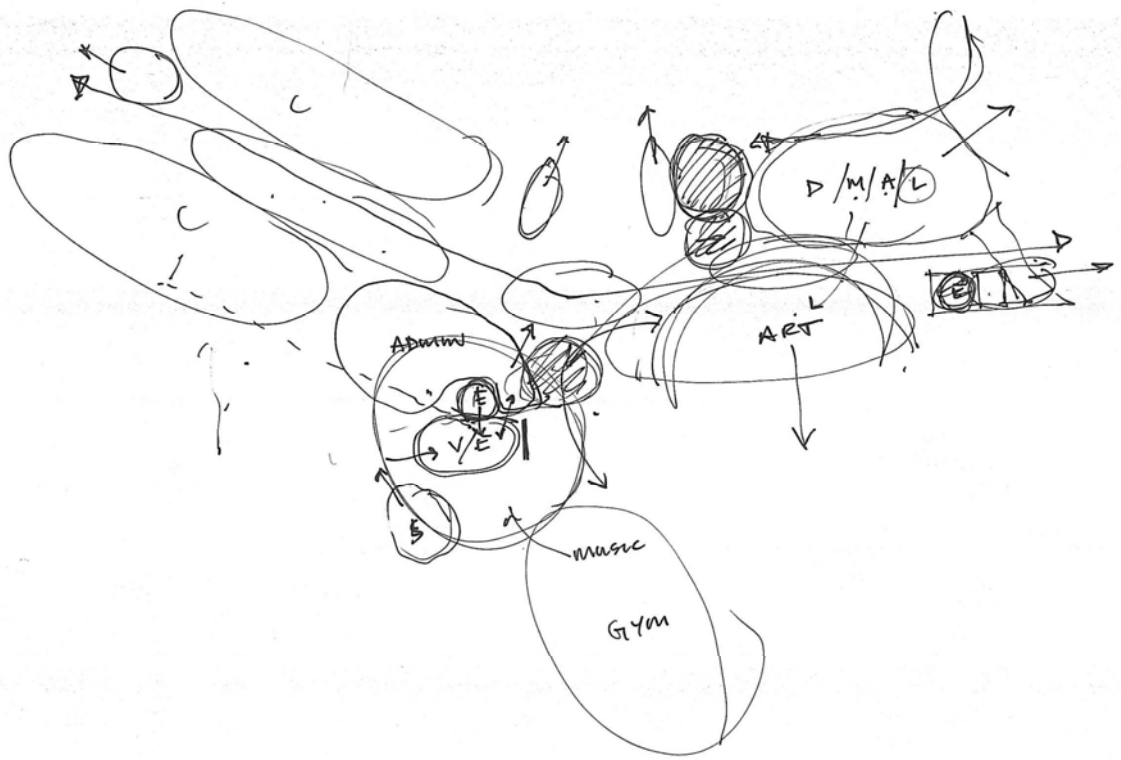


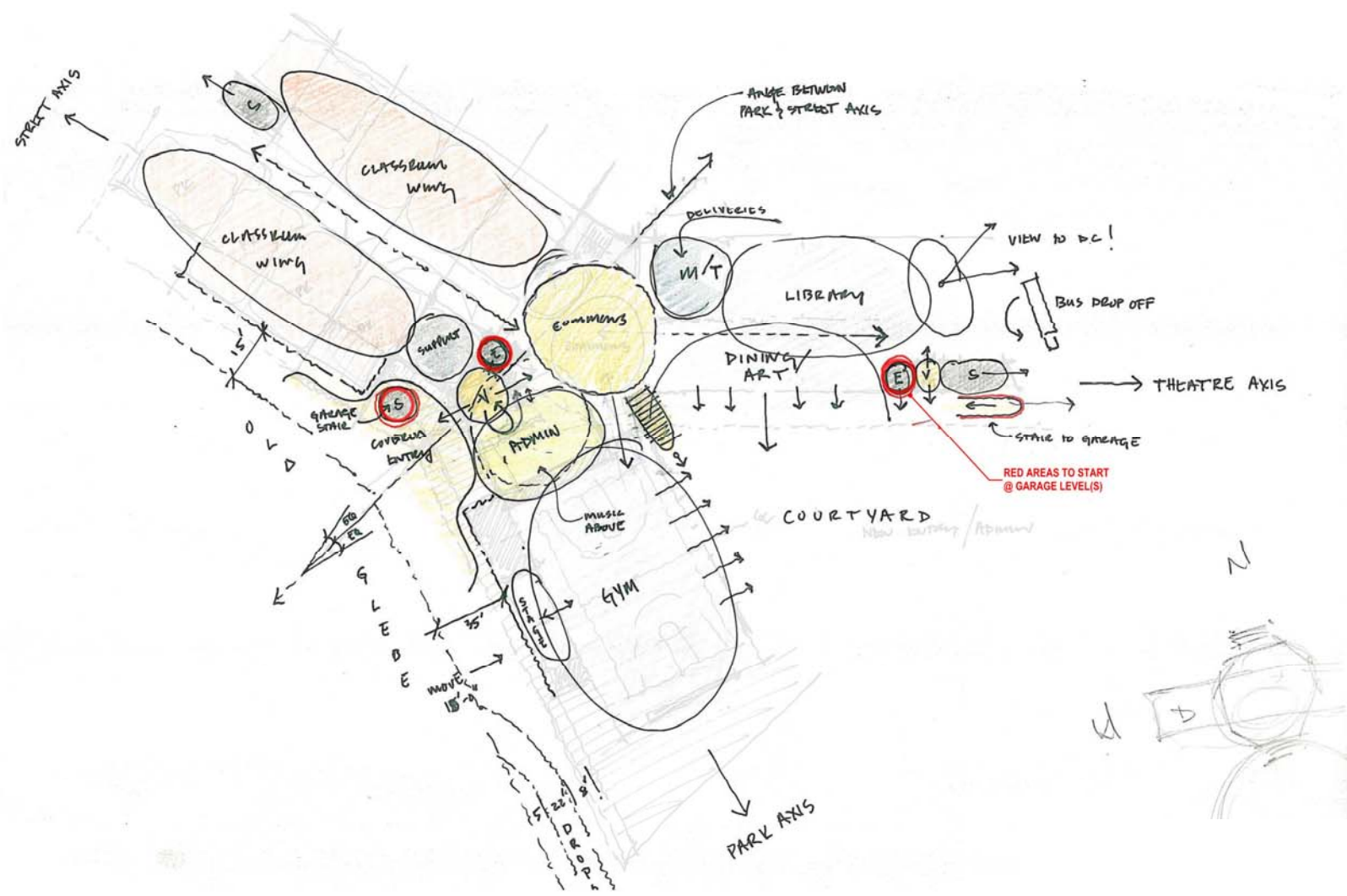
# PARKING GARAGE FLOOR PLAN – LEVEL 1

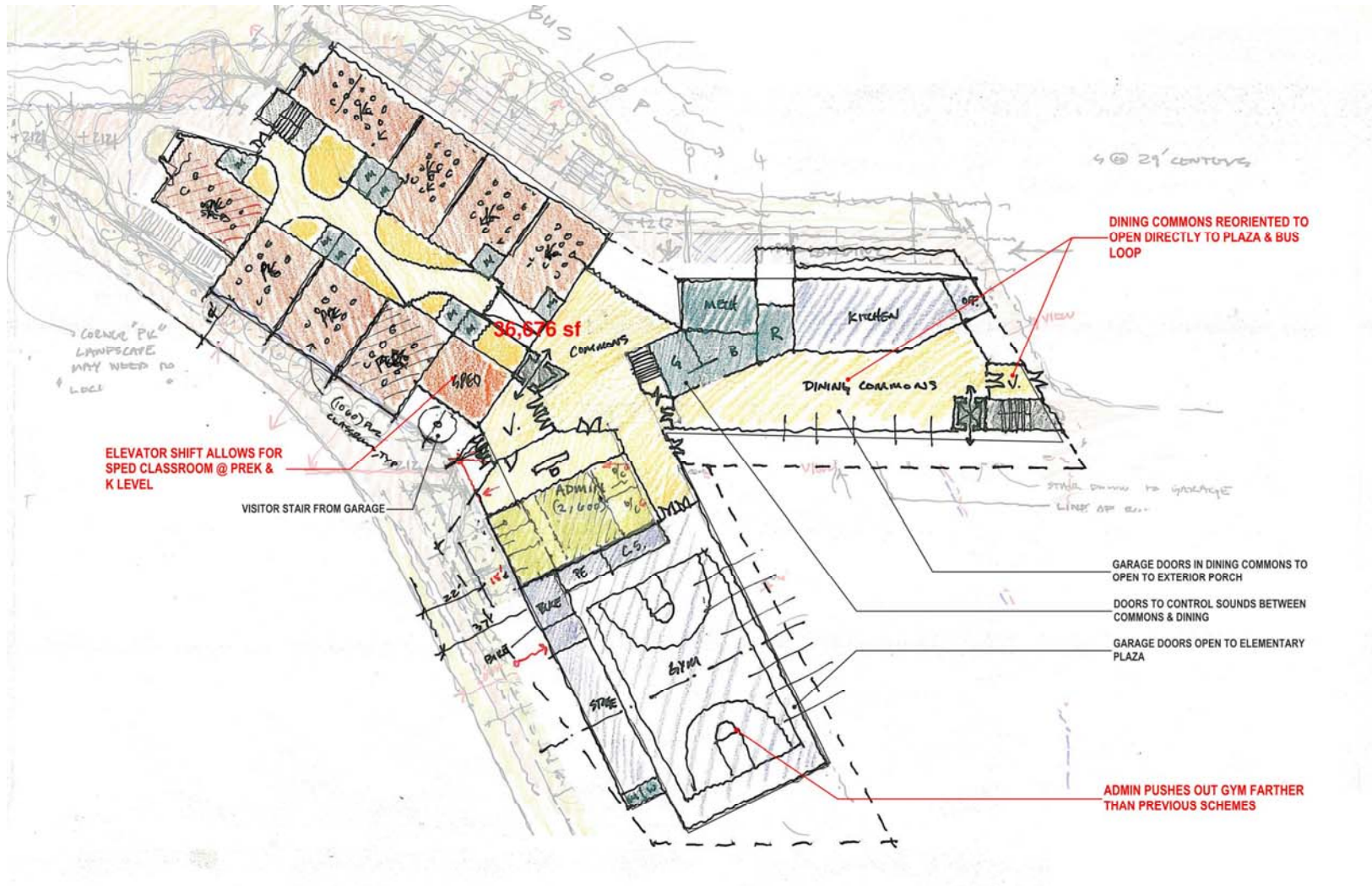


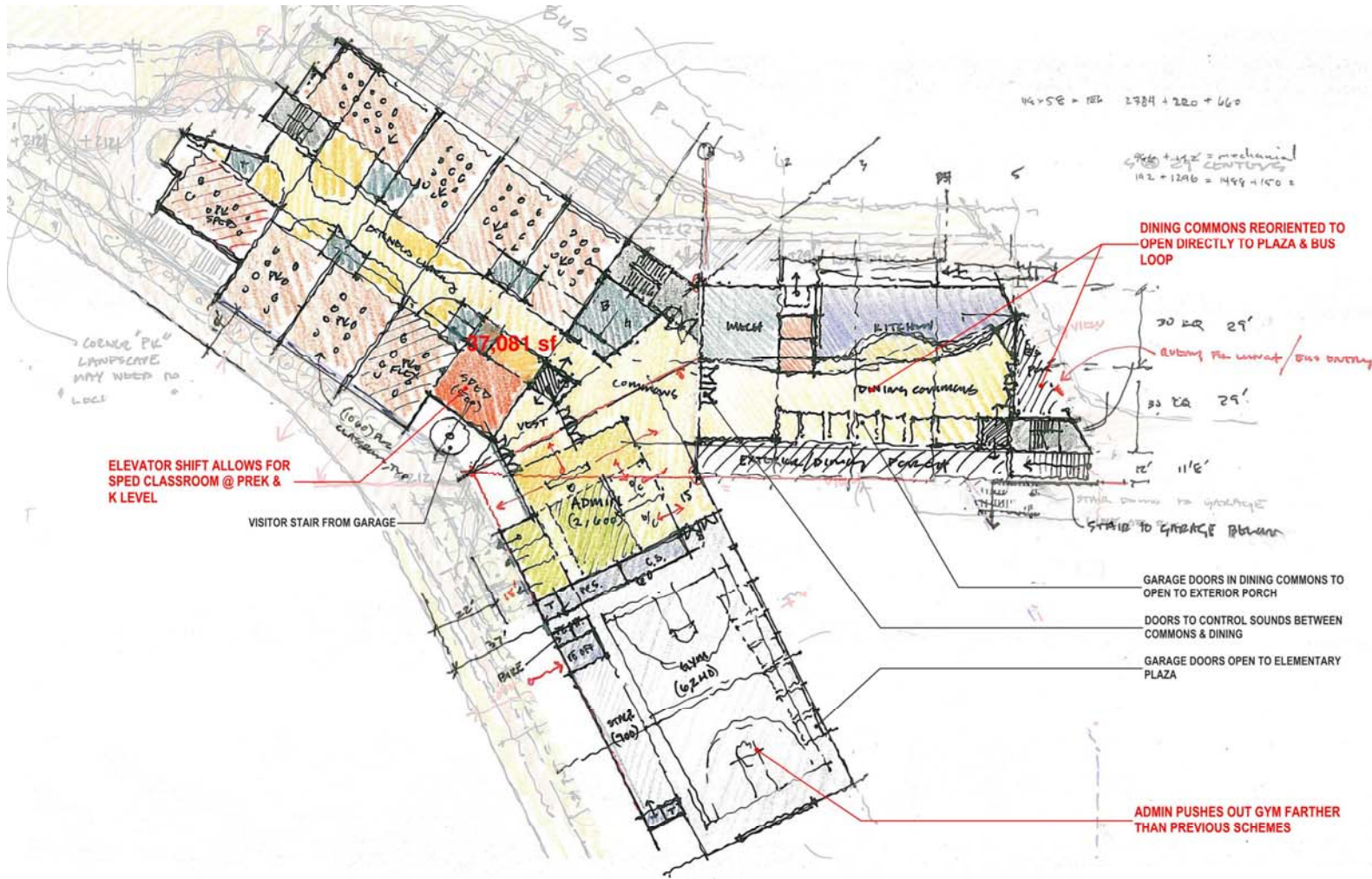
# PARKING GARAGE FLOOR PLAN – LEVEL 2

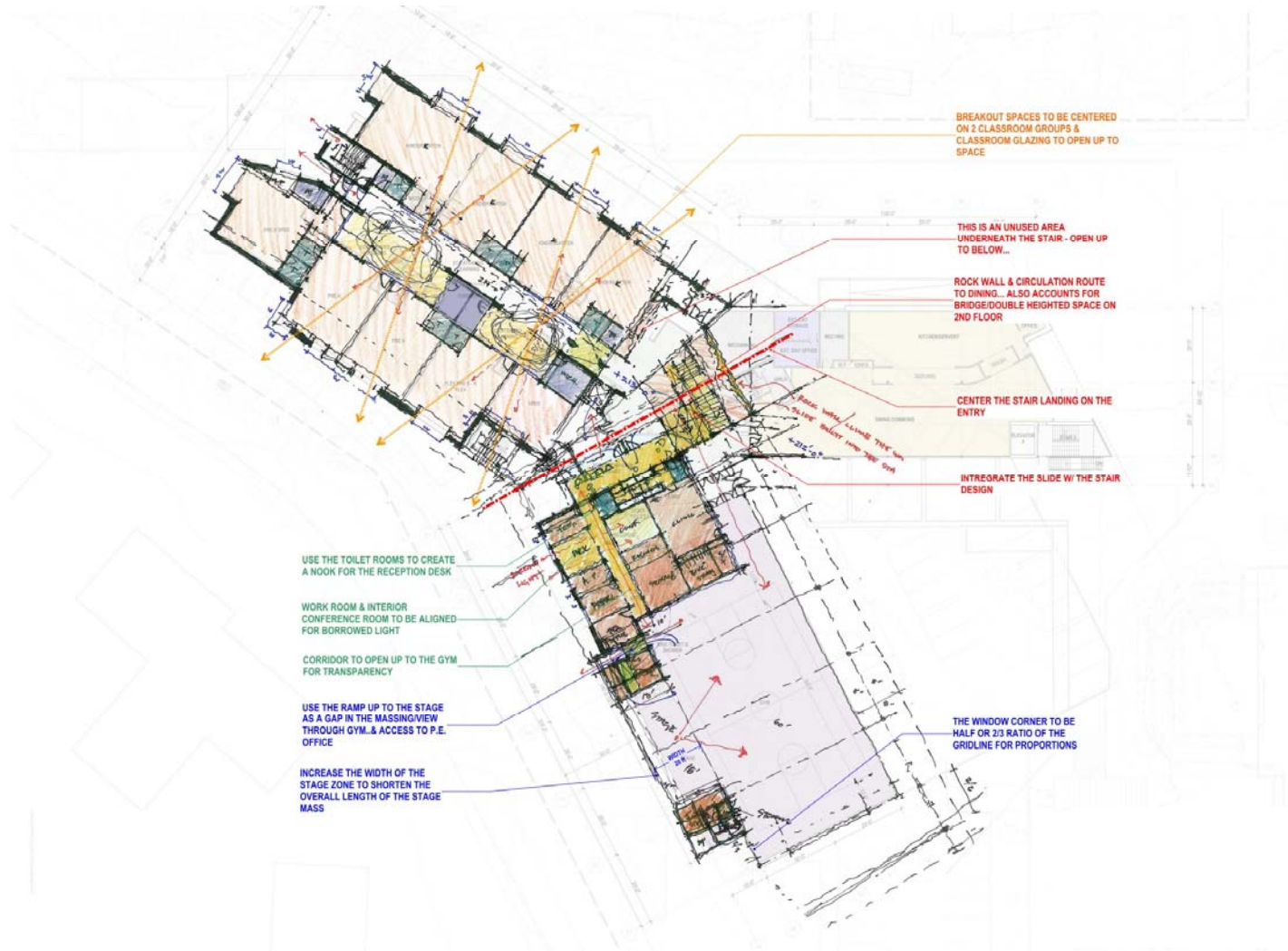
# FIRST FLOOR











BREAKOUT SPACES TO BE CENTERED ON 2 CLASSROOM GROUPS & CLASSROOM GLAZING TO OPEN UP TO SPACE

THIS IS AN UNUSED AREA UNDERNEATH THE STAIR - OPEN UP TO BELOW...

ROCK WALL & CIRCULATION ROUTE TO DINING... ALSO ACCOUNTS FOR BRIDGE/DOUBLE HEIGHTED SPACE ON 2ND FLOOR

CENTER THE STAIR LANDING ON THE ENTRY

INTRODUCE THE SLIDE W/ THE STAIR DESIGN

USE THE TOILET ROOMS TO CREATE A NOOK FOR THE RECEPTION DESK

WORK ROOM & INTERIOR CONFERENCE ROOM TO BE ALIGNED FOR BORROWED LIGHT

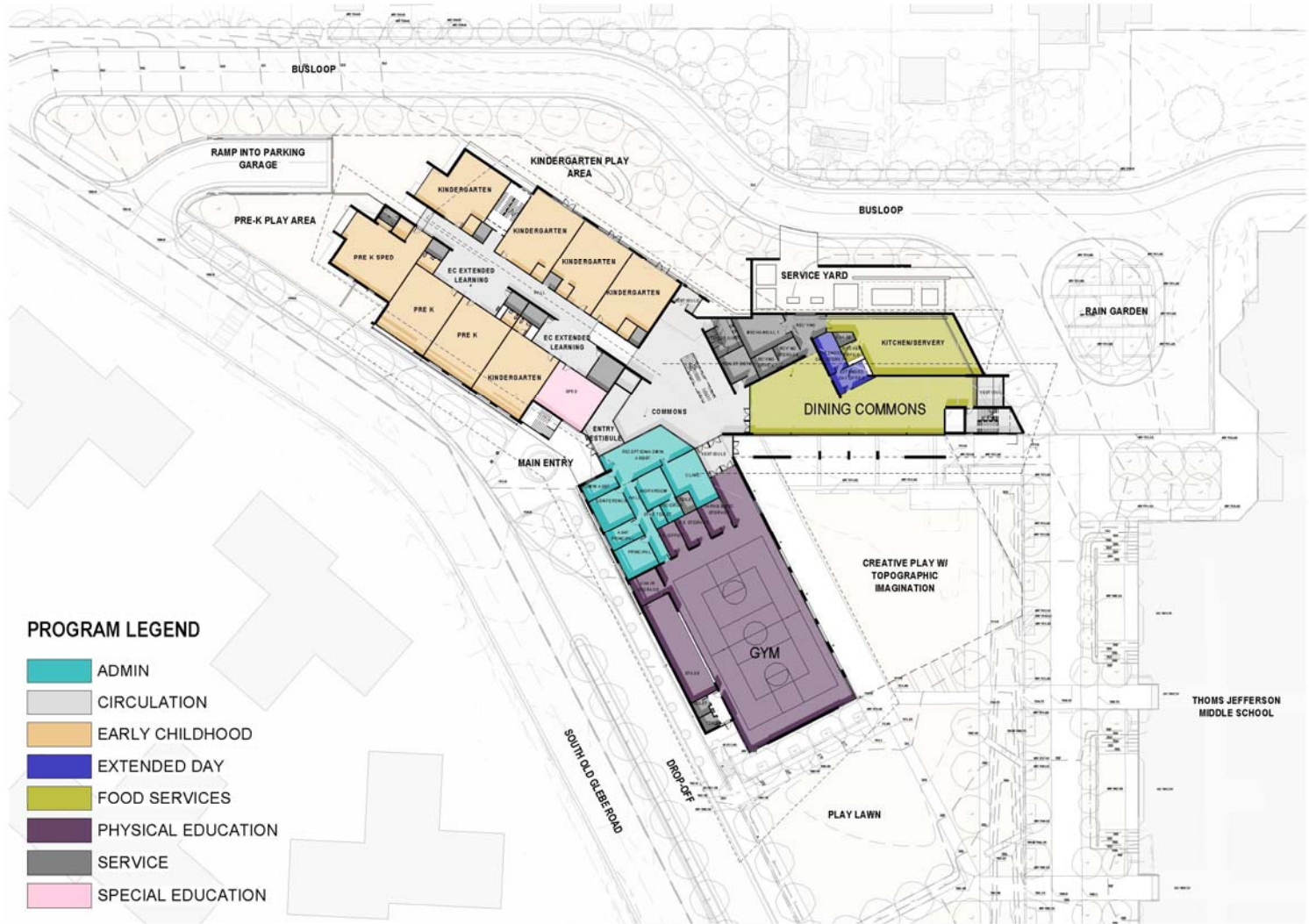
CORRIDOR TO OPEN UP TO THE GYM FOR TRANSPARENCY

USE THE RAMP UP TO THE STAGE AS A GAP IN THE MASSING VIEW THROUGH GYM. & ACCESS TO P.E. OFFICE

INCREASE THE WIDTH OF THE STAGE ZONE TO SHORTEN THE OVERALL LENGTH OF THE STAGE MASS

THE WINDOW CORNER TO BE HALF OR 2/3 RATIO OF THE GRIDLINE FOR PROPORTIONS

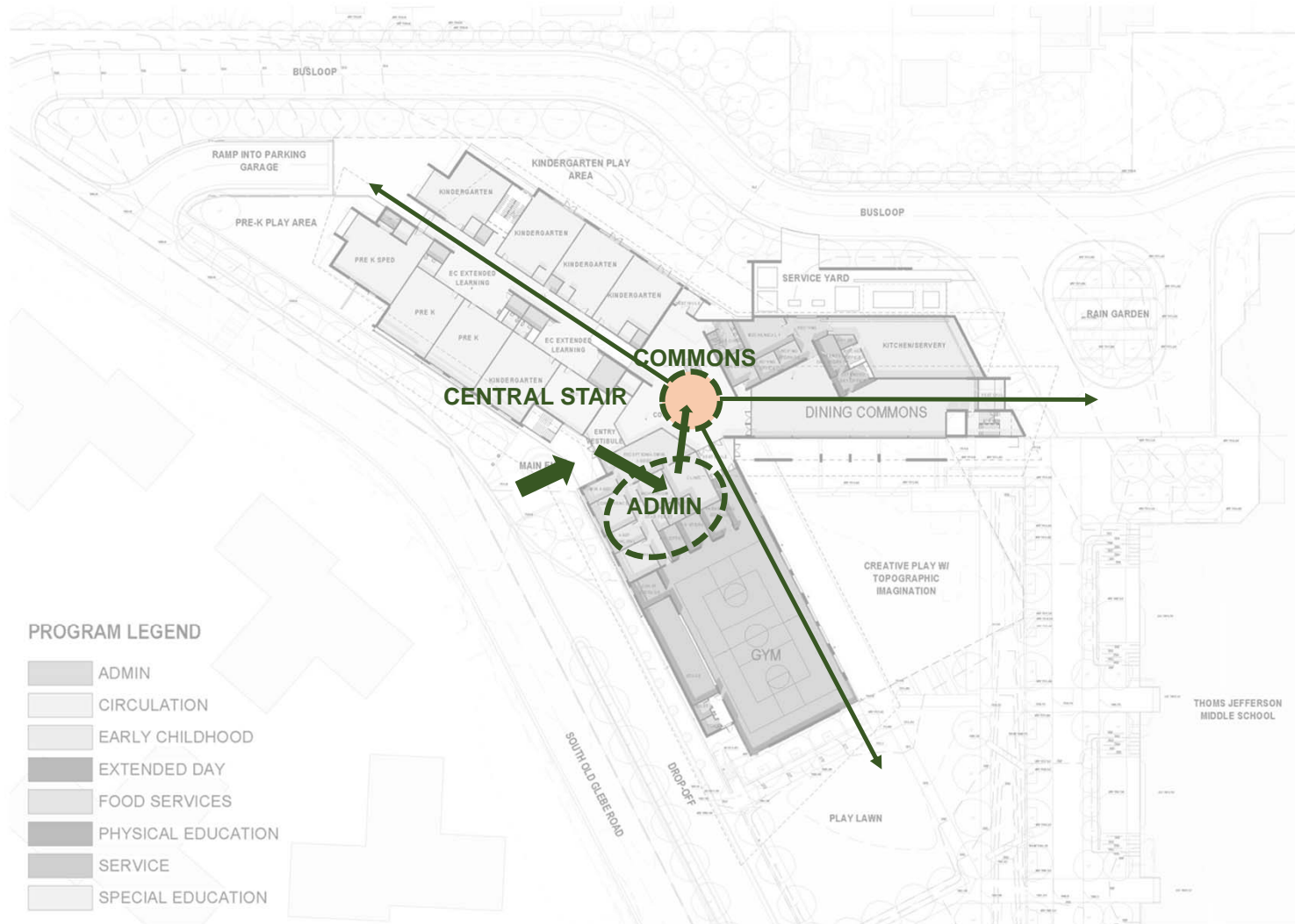




# FIRST FLOOR PLAN



# FIRST FLOOR PLAN – GARAGE ACCESS

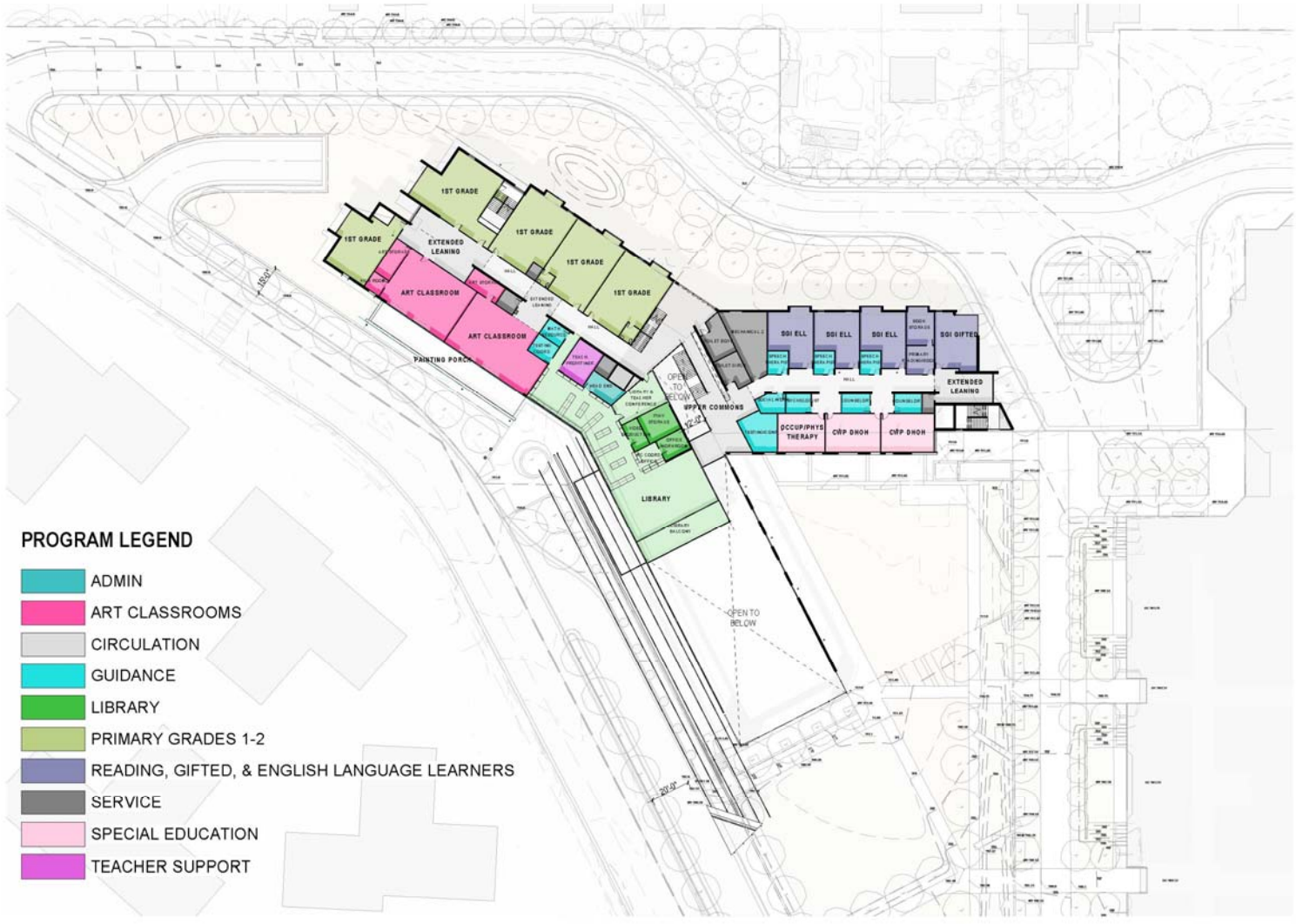


# FIRST FLOOR PLAN



# FIRST FLOOR PLAN

# SECOND FLOOR

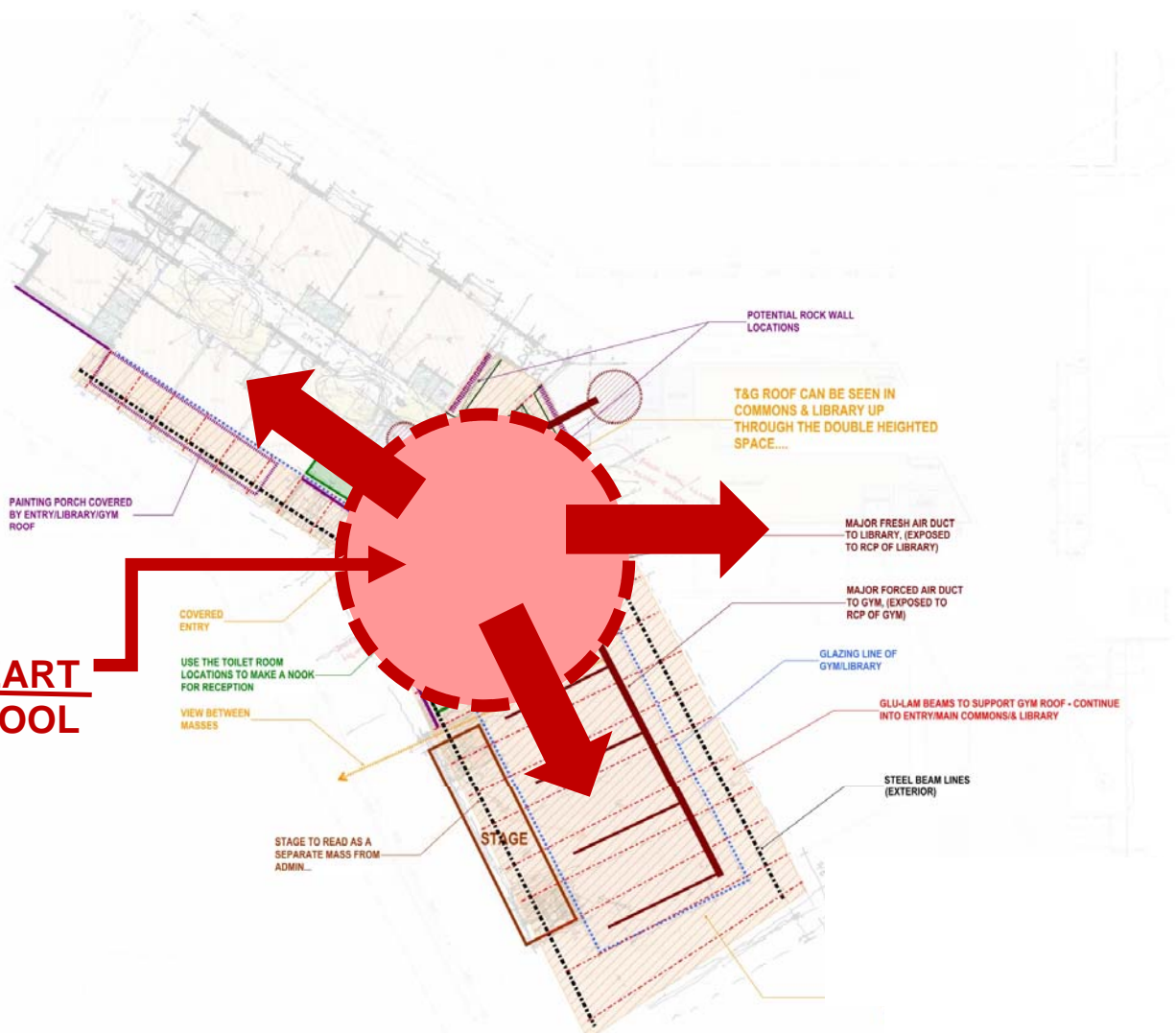


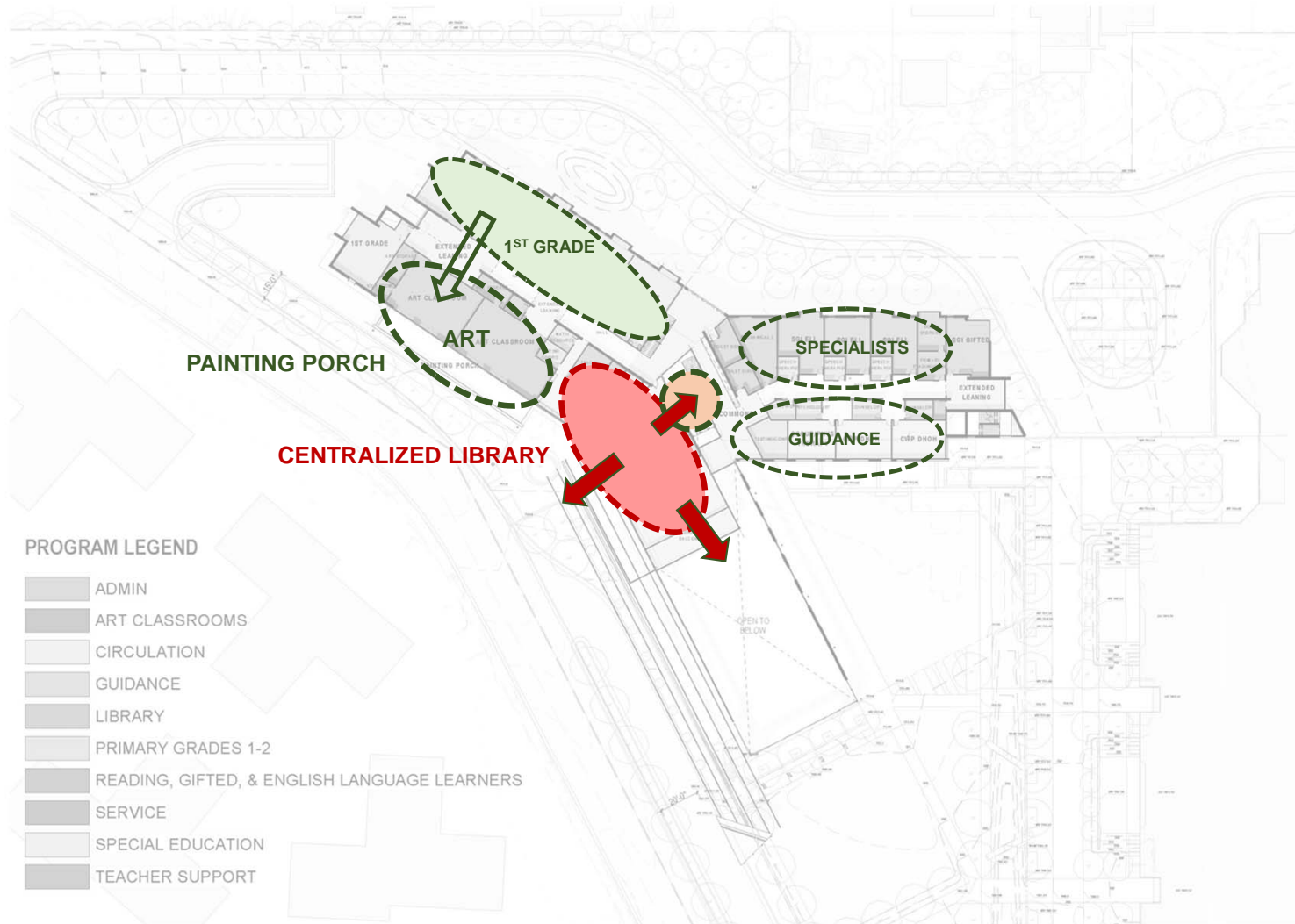
**PROGRAM LEGEND**

- ADMIN
- ART CLASSROOMS
- CIRCULATION
- GUIDANCE
- LIBRARY
- PRIMARY GRADES 1-2
- READING, GIFTED, & ENGLISH LANGUAGE LEARNERS
- SERVICE
- SPECIAL EDUCATION
- TEACHER SUPPORT

# SECOND FLOOR PLAN

**LIBRARY IS THE HEART  
OF THE SCHOOL**

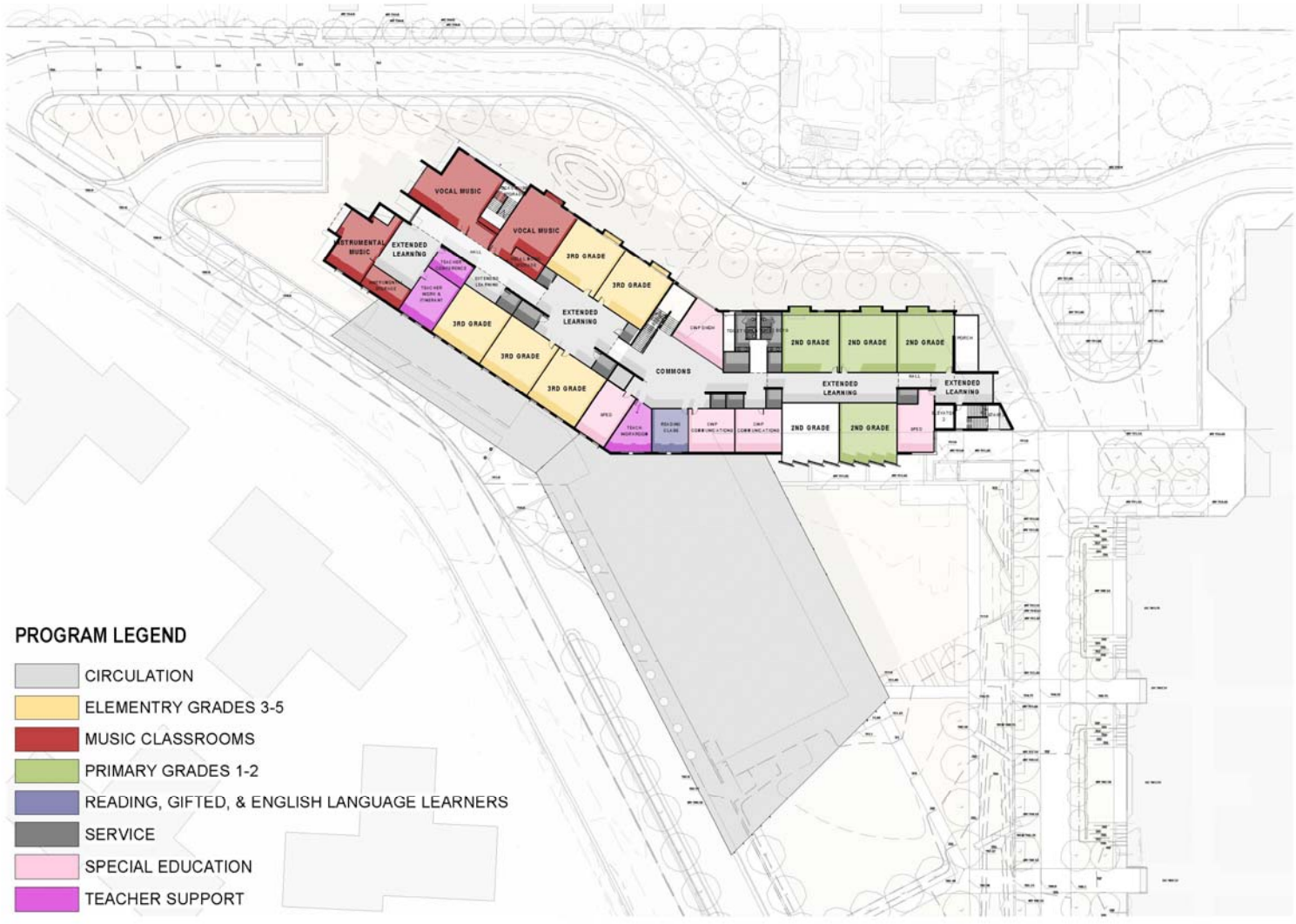




# SECOND FLOOR PLAN



# THIRD FLOOR



**PROGRAM LEGEND**

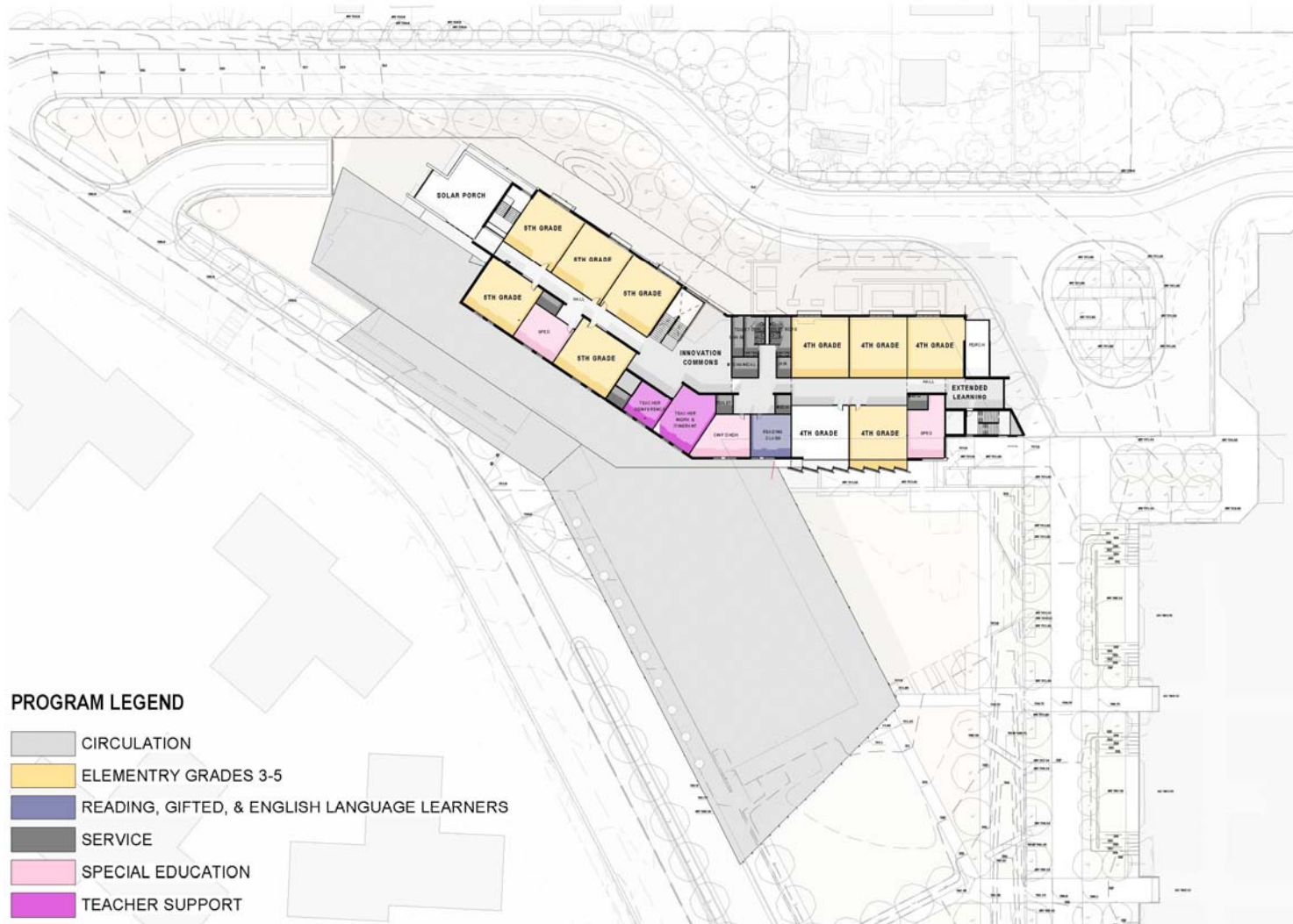
- CIRCULATION
- ELEMENTRY GRADES 3-5
- MUSIC CLASSROOMS
- PRIMARY GRADES 1-2
- READING, GIFTED, & ENGLISH LANGUAGE LEARNERS
- SERVICE
- SPECIAL EDUCATION
- TEACHER SUPPORT

# THIRD FLOOR PLAN

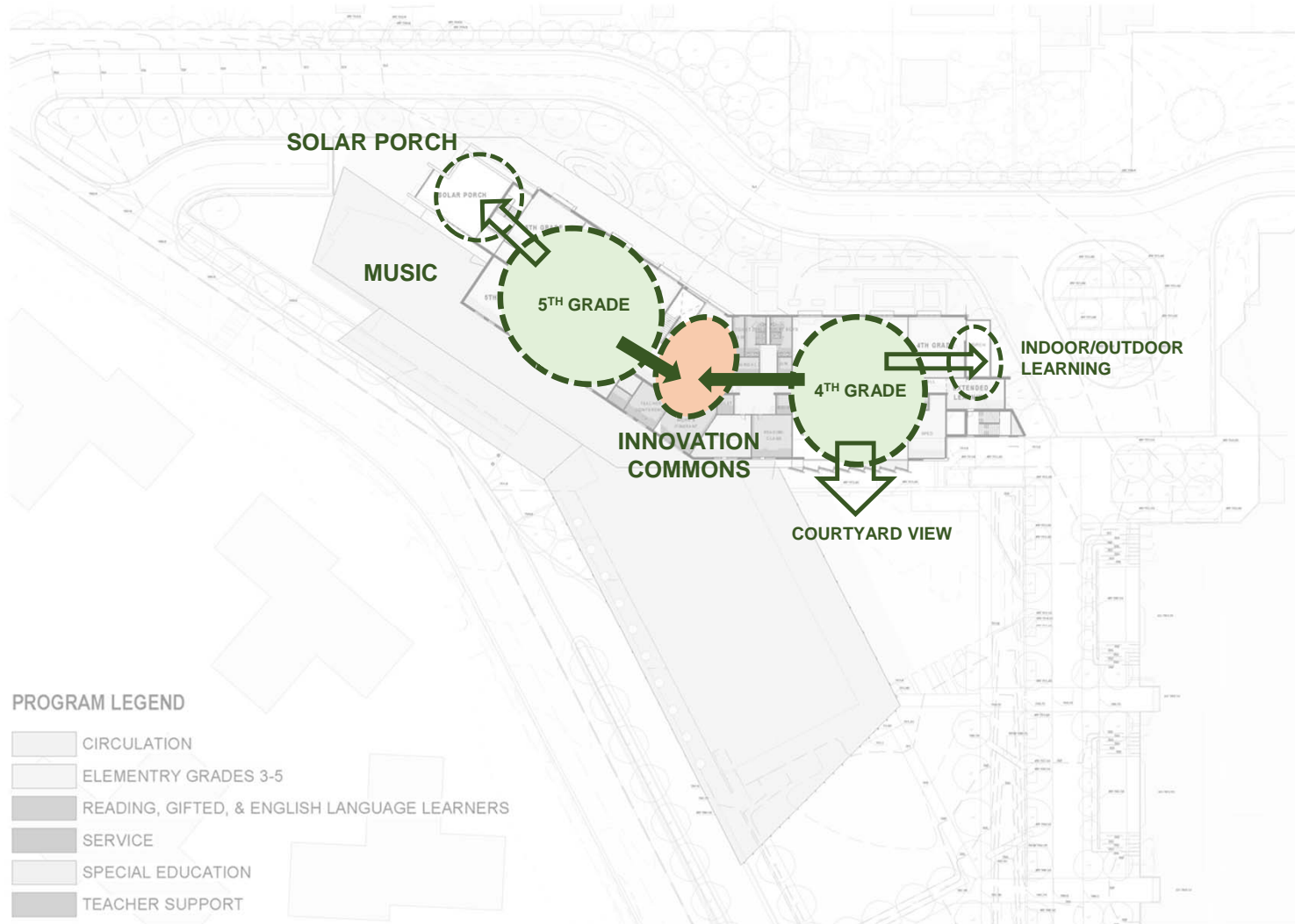


# THIRD FLOOR PLAN

# FOURTH FLOOR



# FOURTH FLOOR PLAN



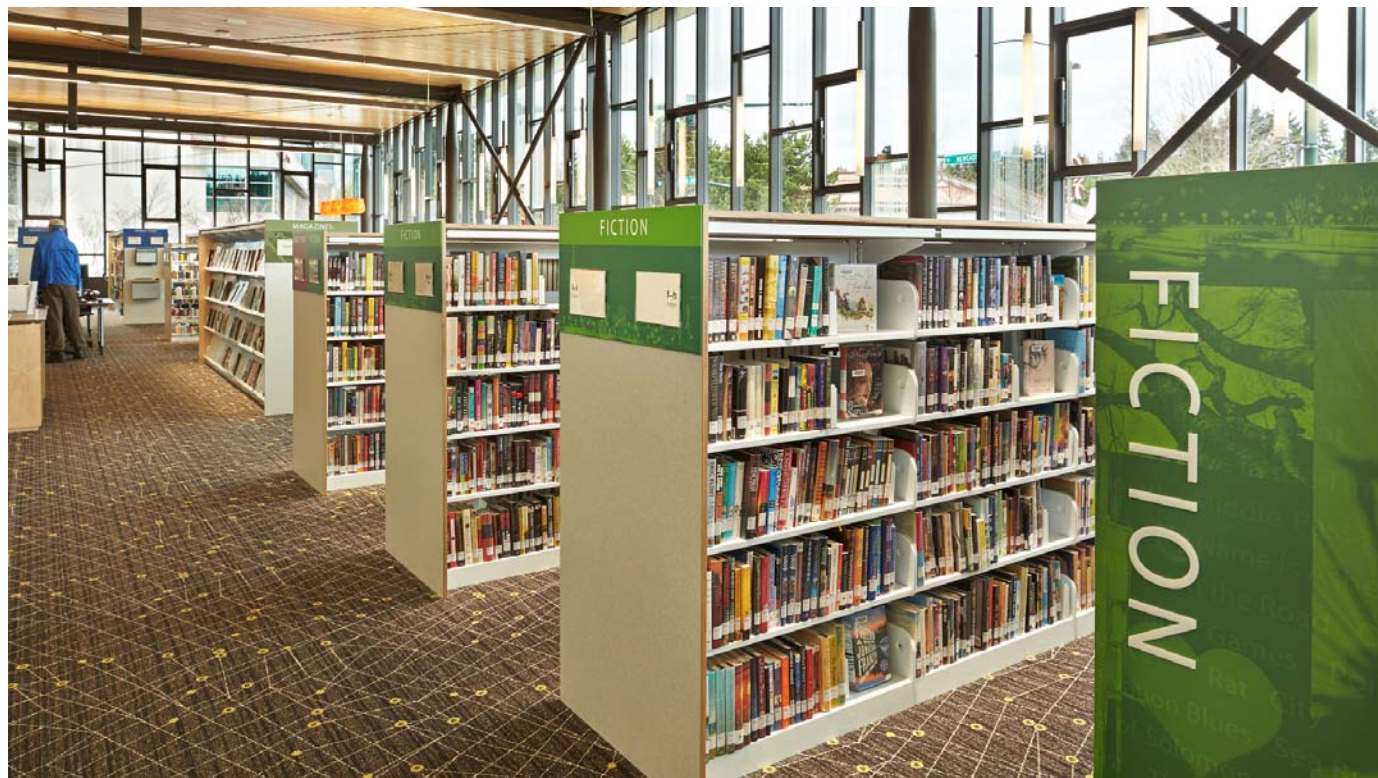
# FOURTH FLOOR PLAN

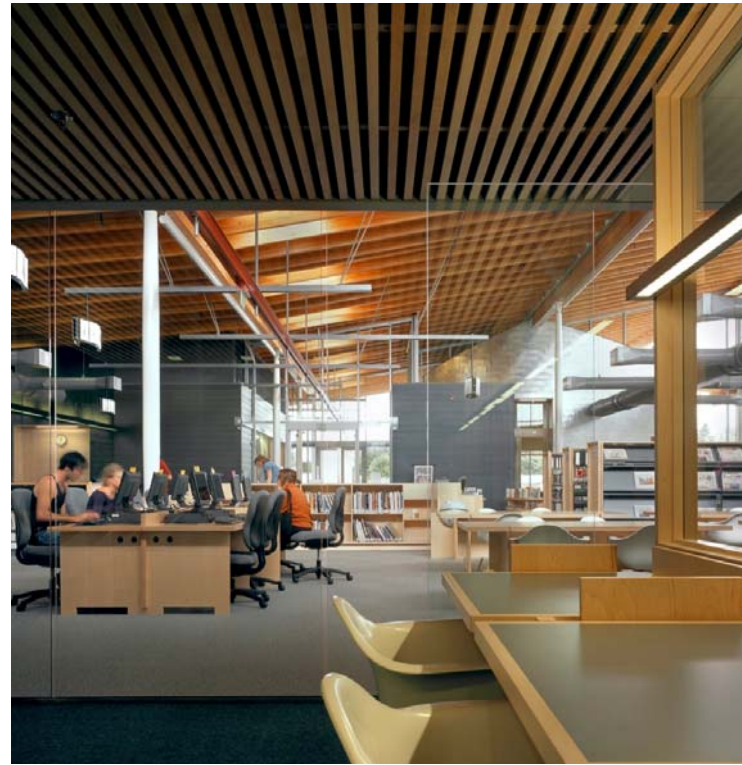








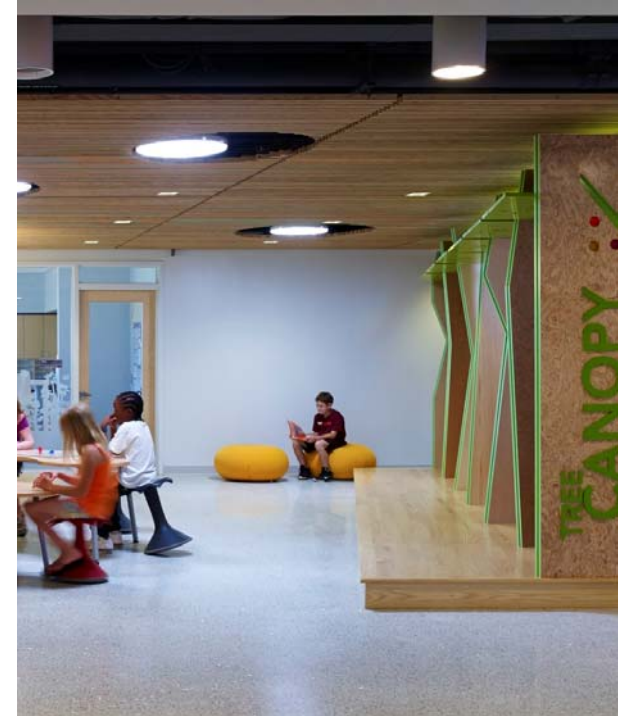




# PRECEDENT IMAGES : LIBRARY







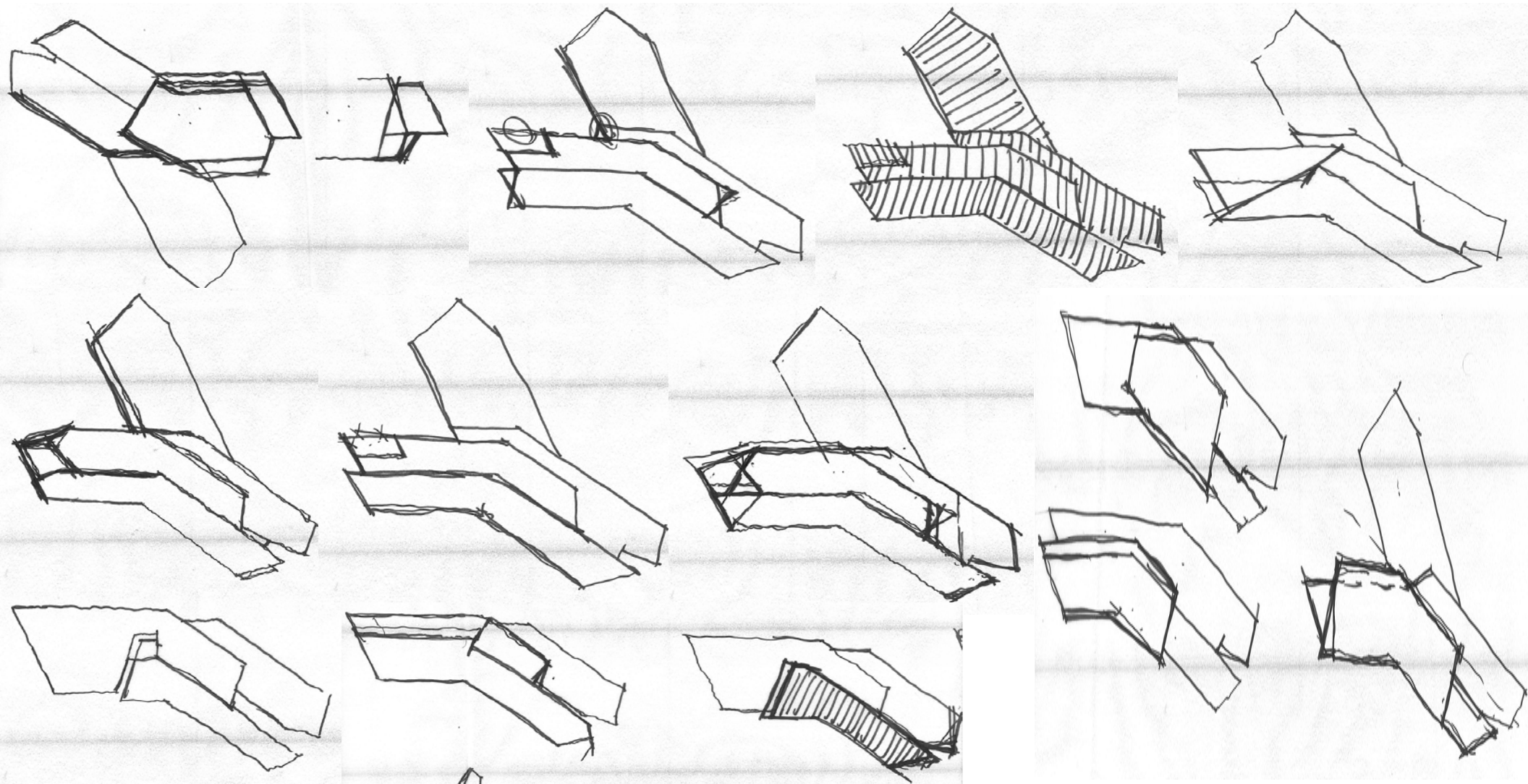


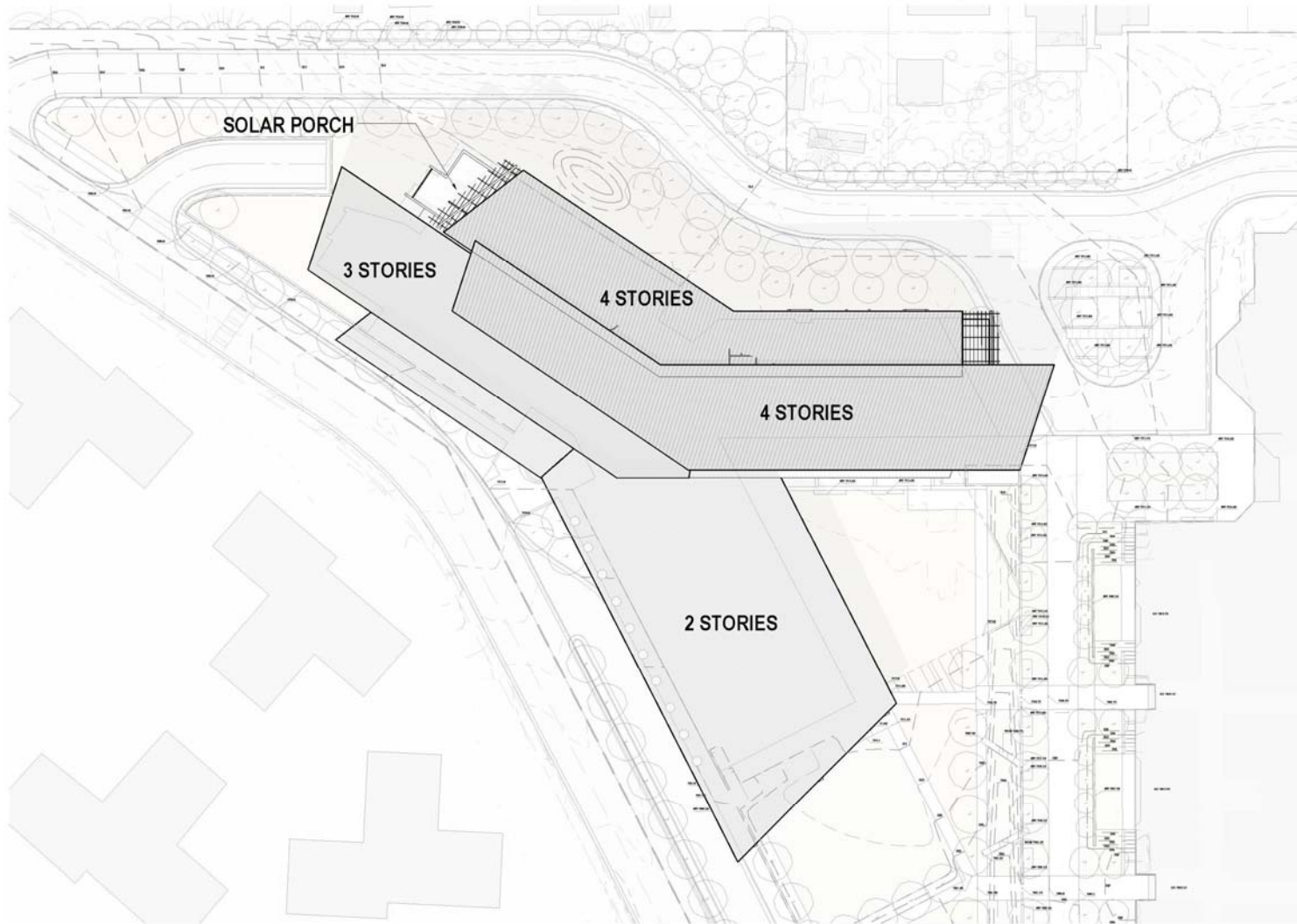


# PRECEDENT IMAGES : OUTDOOR LEARNING



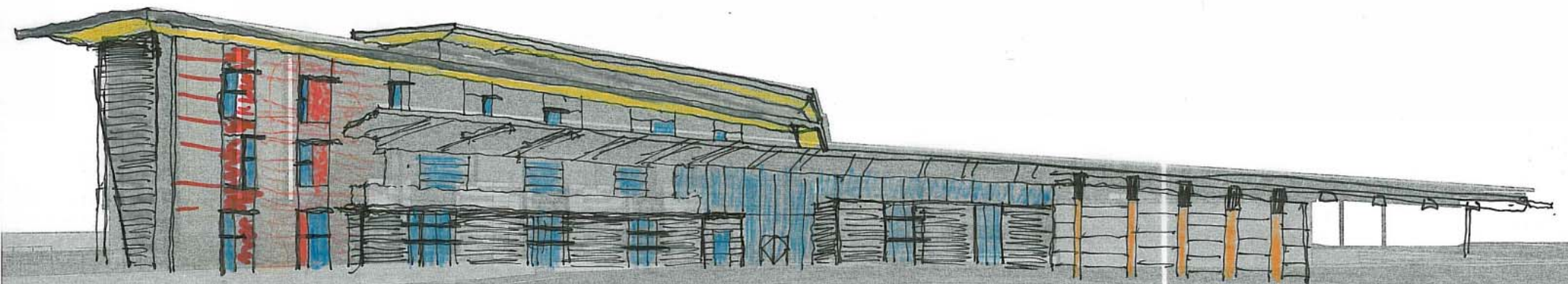
# ROOF

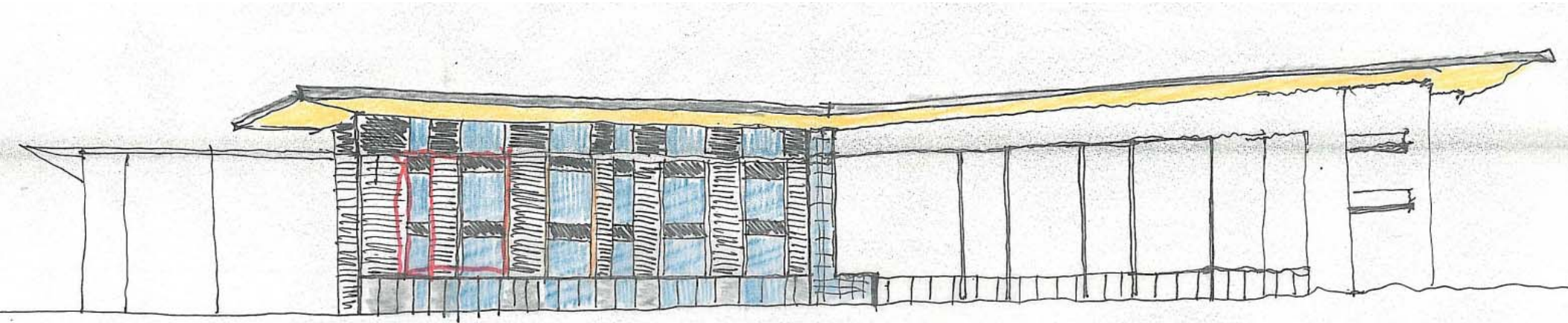
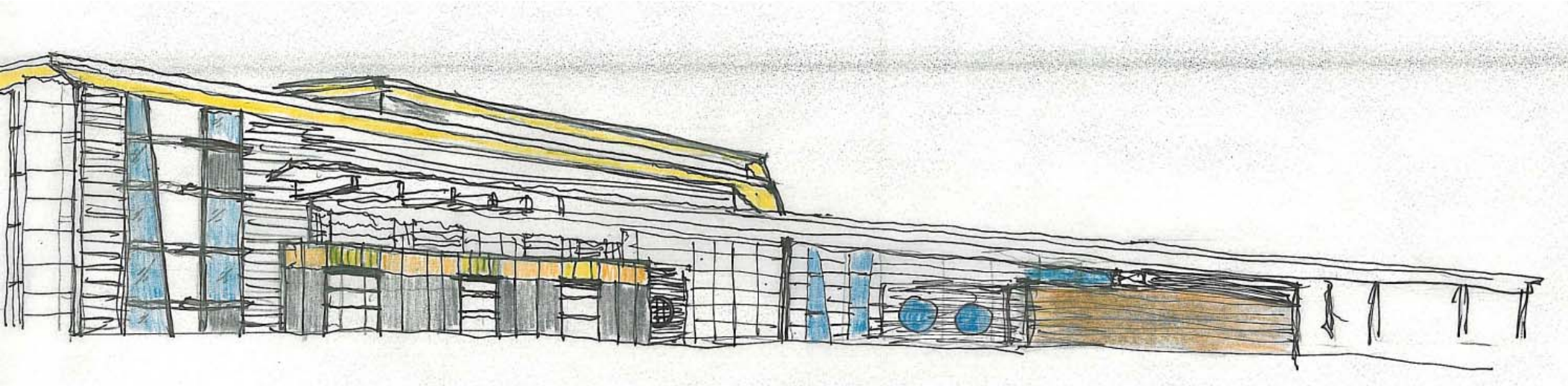


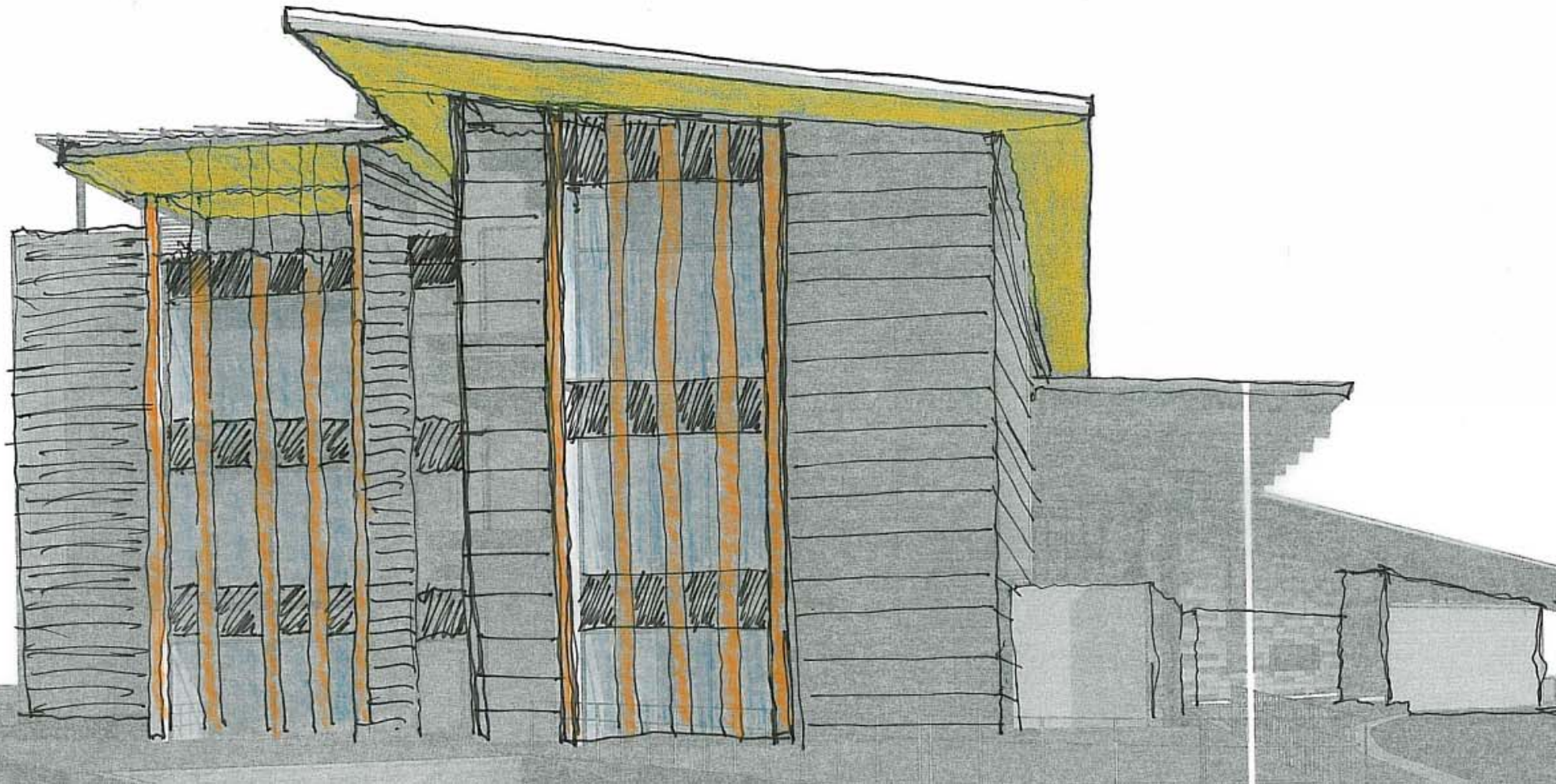


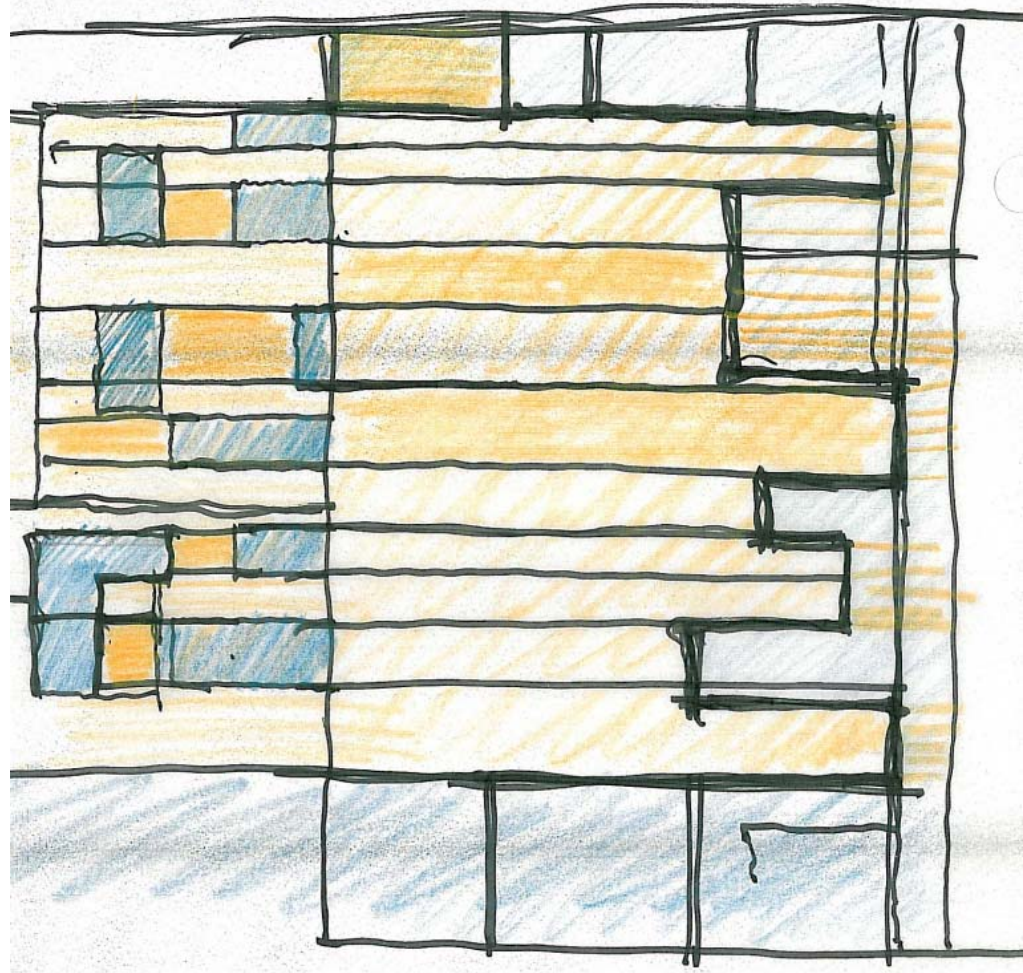
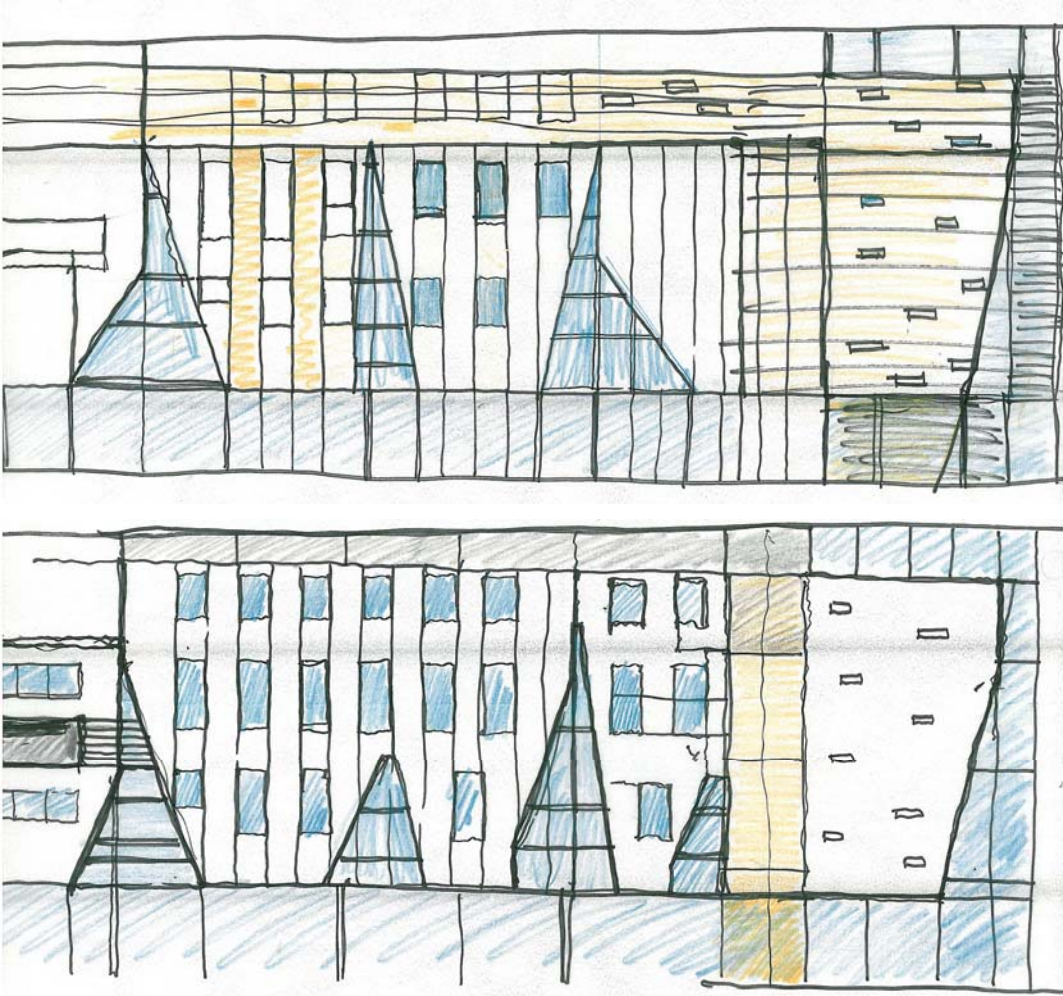
# ROOF PLAN

# ELEVATIONS

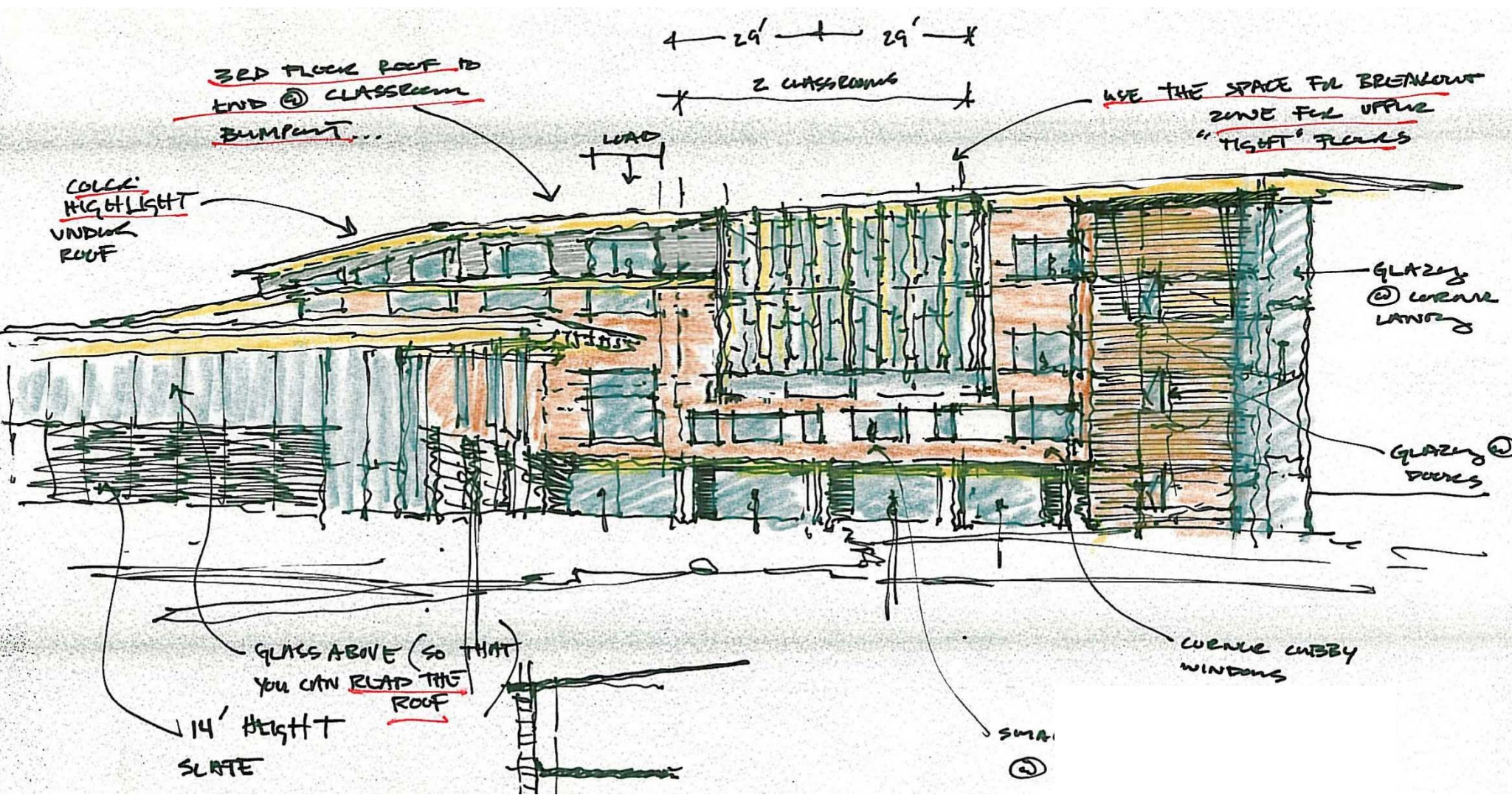


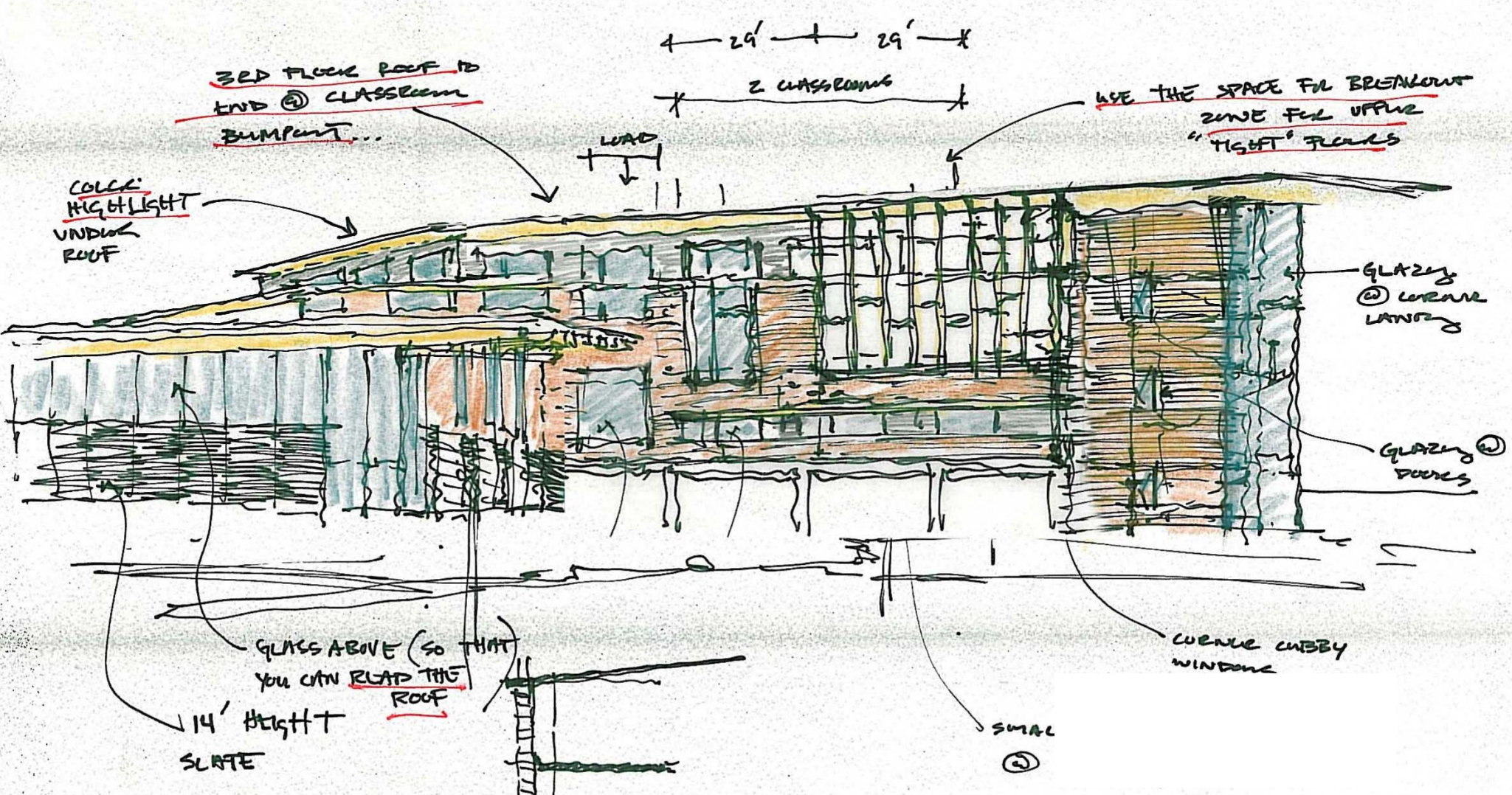


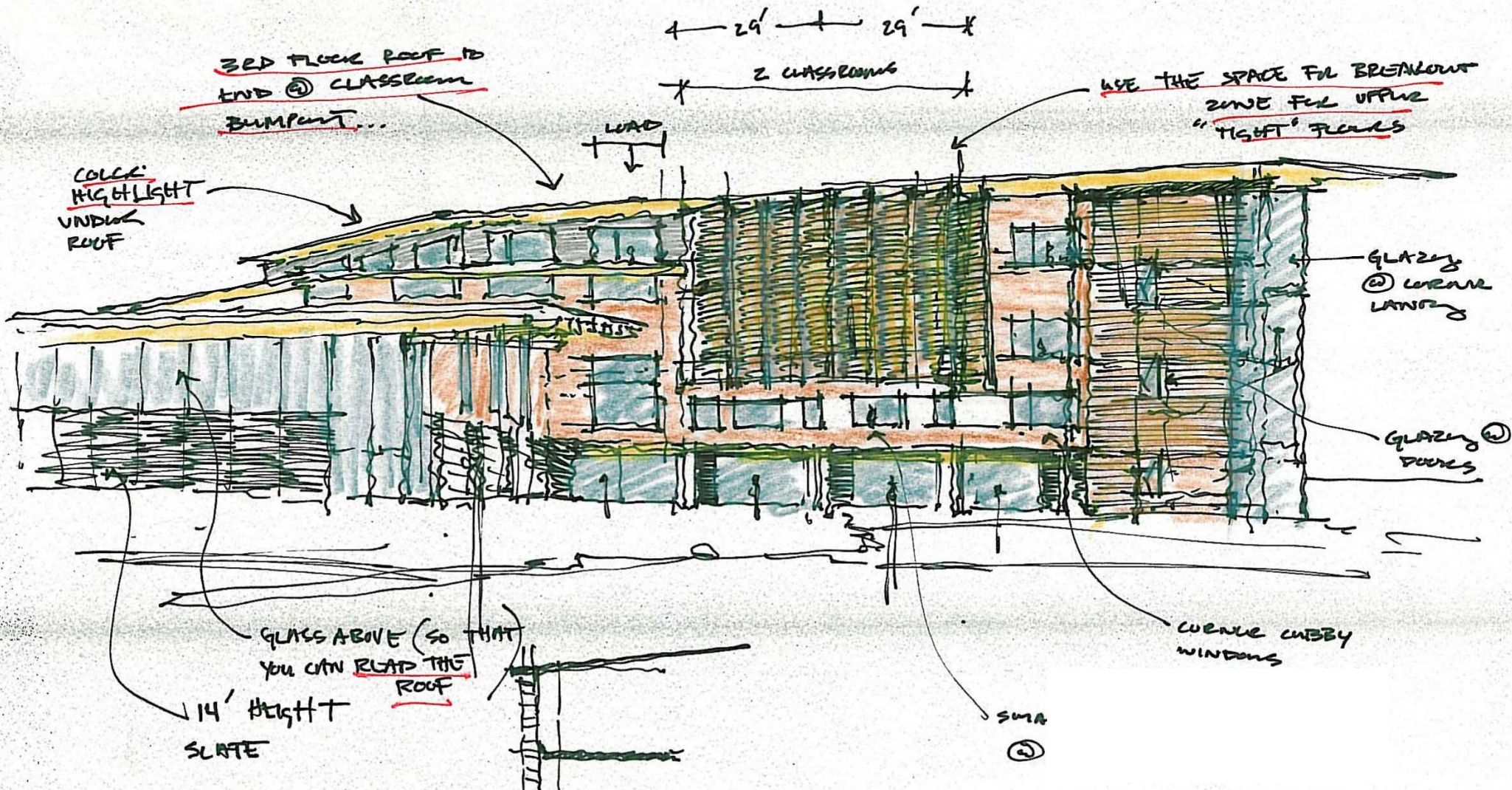


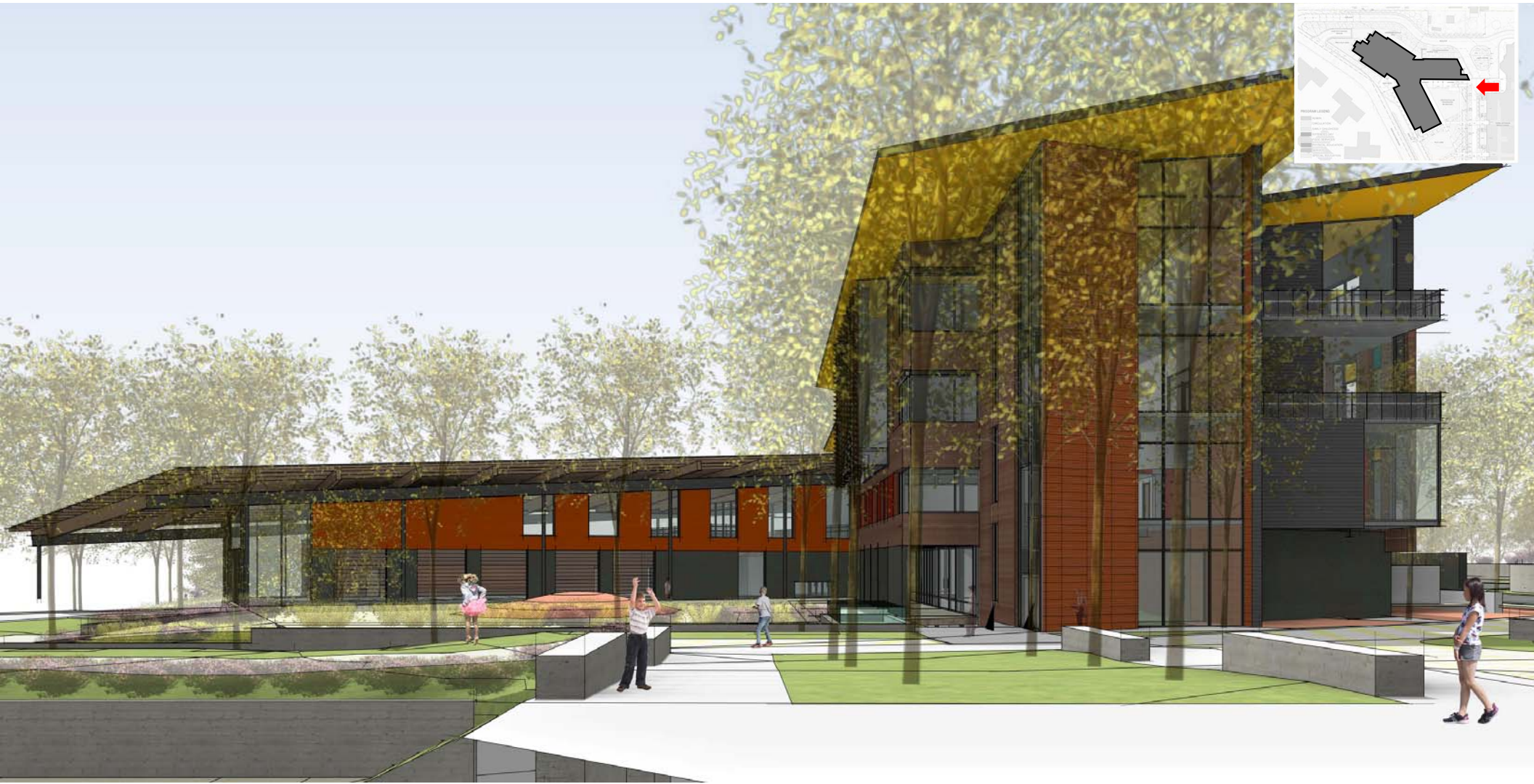










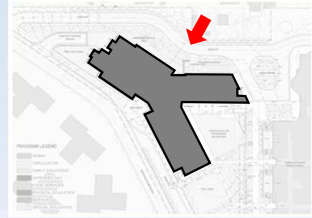




22 August  
BLPC

77

PERSPECTIVE VIEW OF EAST ELEVATION



# PERSPECTIVE VIEW OF NORTH ELEVATION





22 August  
BLPC 80 PERSPECTIVE VIEW OF NORTHWEST ELEVATION





22 August  
BLPC

81

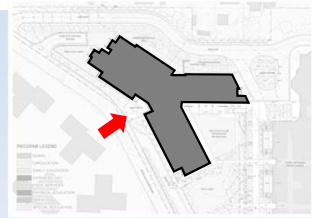
PERSPECTIVE VIEW OF NORTHWEST ELEVATION



22 August  
BLPC

82

PERSPECTIVE VIEW OF NORTHWEST ELEVATION

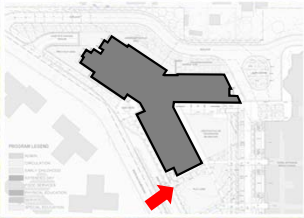






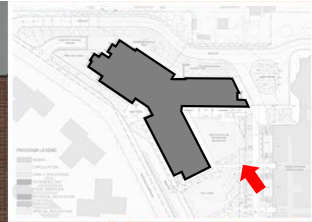


22 August  
BLPC 86 **PERSPECTIVE VIEW OF SOUTH ELEVATION**











# PERSPECTIVE VIEW OF SOUTH ELEVATION





22 August  
BLPC

92

PERSPECTIVE VIEW OF LIBRARY





22 August  
BLPC

94

PERSPECTIVE VIEW OF LIBRARY



# PERSPECTIVE VIEW OF DINING COMMONS

# SITE PLANS





Elementary school play surface over parking structure

Tallest height of play surface (at SW corner): 10.5 feet + 42" fence

Size of elevated ES playground south of building: 48,163 square feet

Variety of play surfaces: Non-crumb turf, poured rubber, pavers.

Natural surfaces in raised beds, including school gardens

Trees on play surface in raised containers



Elementary school play surface over parking structure shifted 15' east while maintaining a 50' wide pedestrian mall

Tallest height of play surface (at SW corner): 8 feet + 42" fence

Size of elevated ES playground south of building: 37,838 square feet

Variety of play surfaces: Non-crumb Turf, poured rubber, pavers.

Natural surfaces in raised beds, including school gardens

More shade trees in ground at SW & eastern edges of play surface

No ramps or stairs to front door of ES



70% of elementary school play surface at natural grade

Series of retaining walls at 3 feet or less, and playground would be fenced.

Size of ES playground south of building: 38,391 square feet

Variety of play surfaces: Non-crumb turf, poured rubber, pavers.

Natural surfaces in ground including school gardens; all trees in ground

Not digging out along middle school & leaving SW corner as is (potential removal of parking lot)

22' wide drop off lane on SOG

## Option C: 2 level underground parking garage under ES



70% of elementary school play surface at natural grade

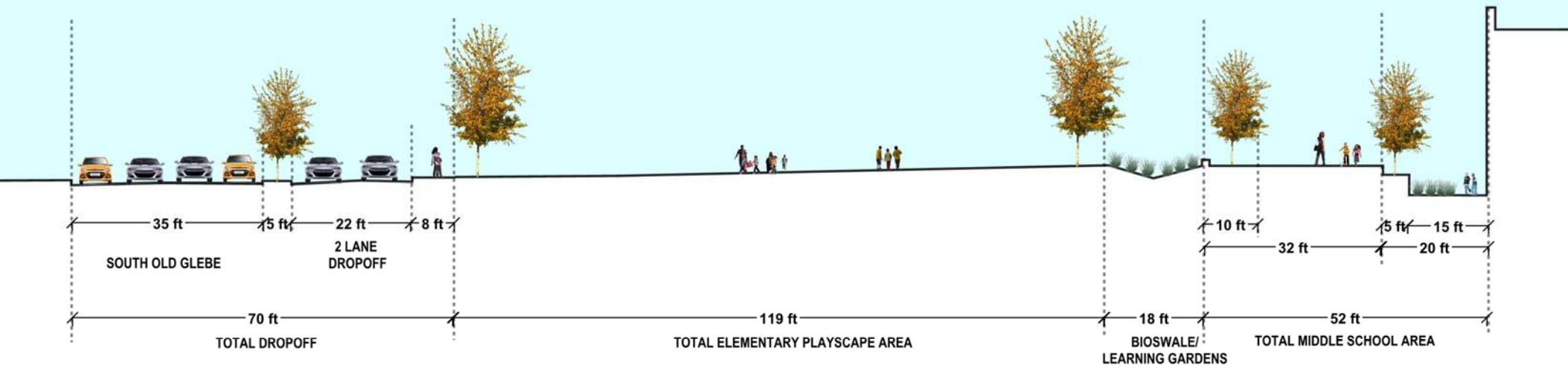
Series of retaining walls at 3 feet or less, and playground would be fenced.

Size of ES playground south of building: 44,000 – 45,000 square feet

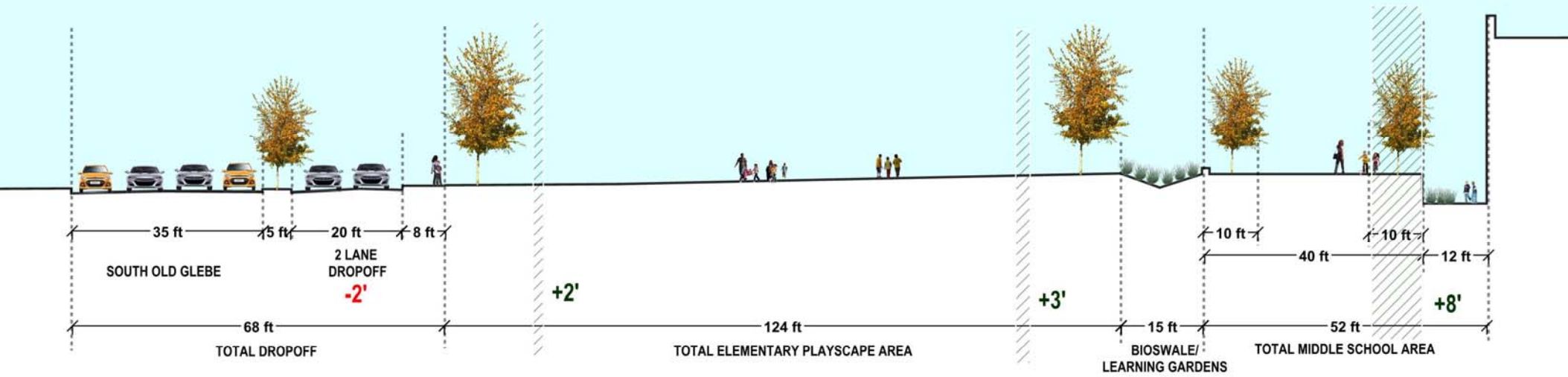
Variety of play surfaces: Non-crumb turf, poured rubber, pavers. Natural surfaces in ground including school gardens; all trees in ground

“Filling in” along middle school & leaving SW corner as is (potential removal of parking lot). Ground floor access to 2 of 3 MS doors on west side

20' wide drop off lane on SOG



**OPTION "C"**



**OPTION "D"**

# NEXT STEPS

August 31	Joint BLPC – PFRC
September 13	Community Forum
September 21	Joint BLPC - PFRC
October 6	Schematic Design info item to School Board

# ADJORN

For further information please contact:

APS Project Manager

**Steve Stricker**

571-220-0048

[steven.stricker@apsva.us](mailto:steven.stricker@apsva.us)

County Project Manager

**Marco Rivero**

703-228-3572

[mrivero@arlingtonva.us](mailto:mrivero@arlingtonva.us)

Web links:

[APS Project Website](#)

[PFRC Project Website](#)

[Submit Public Comment and Sign up for Email Distribution](#)